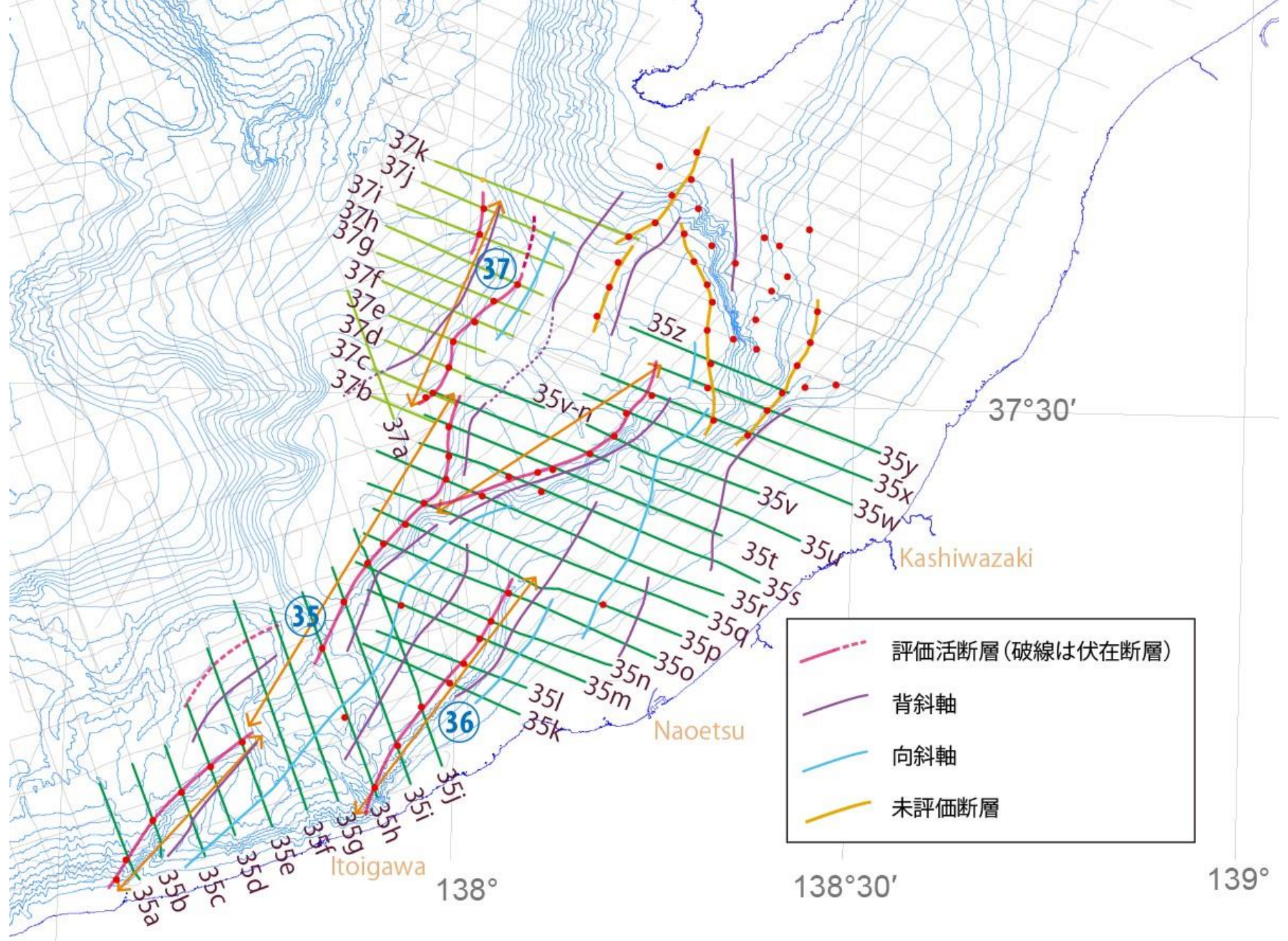
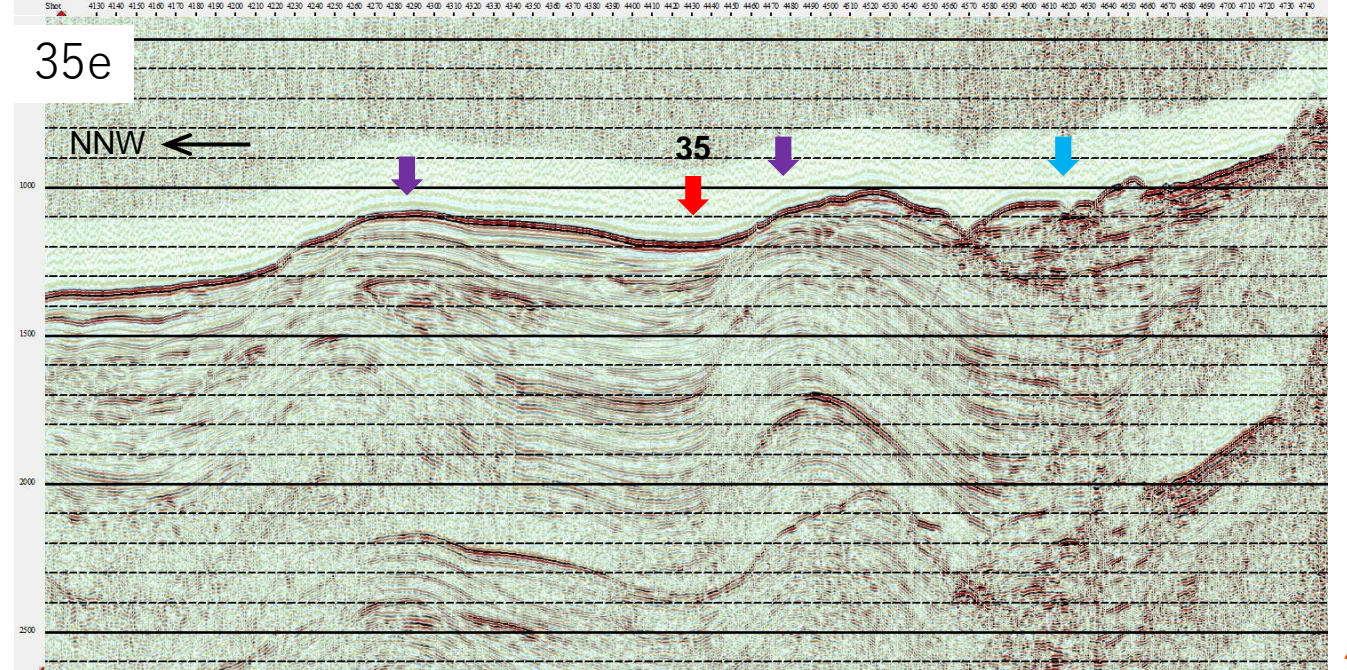
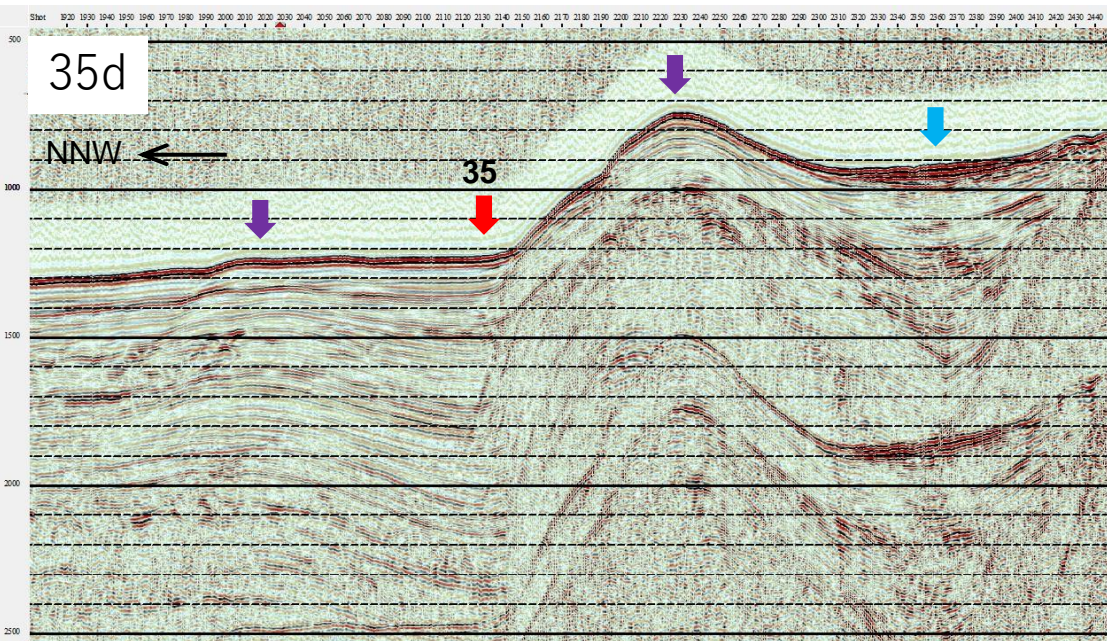
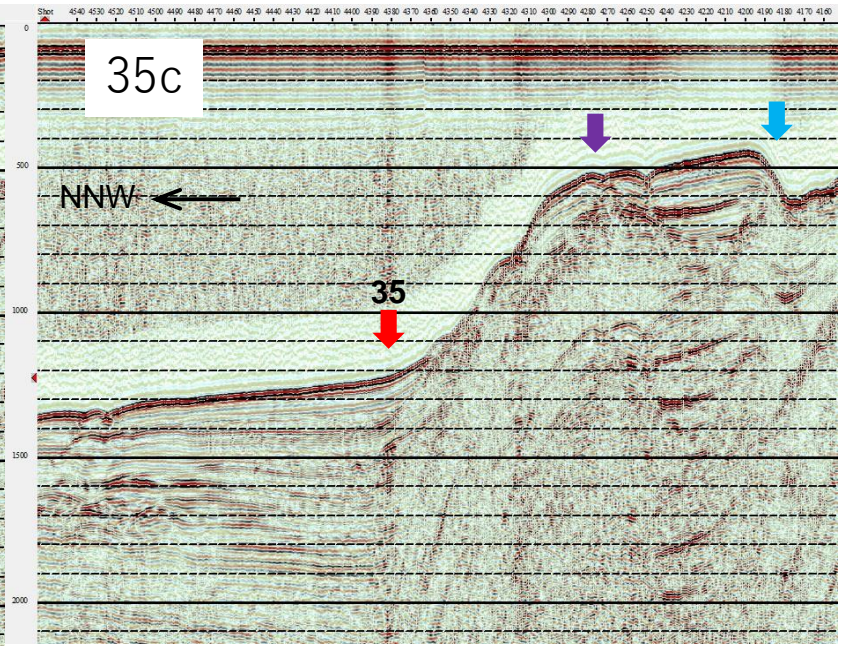
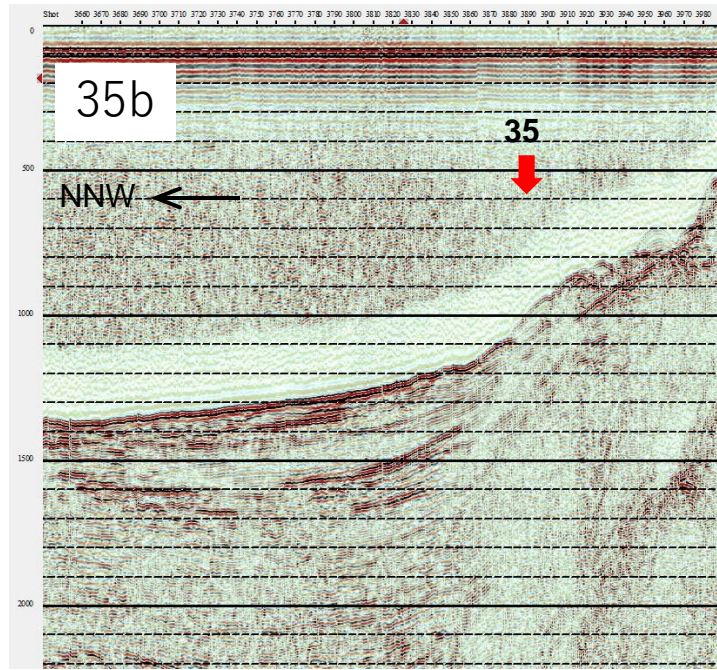
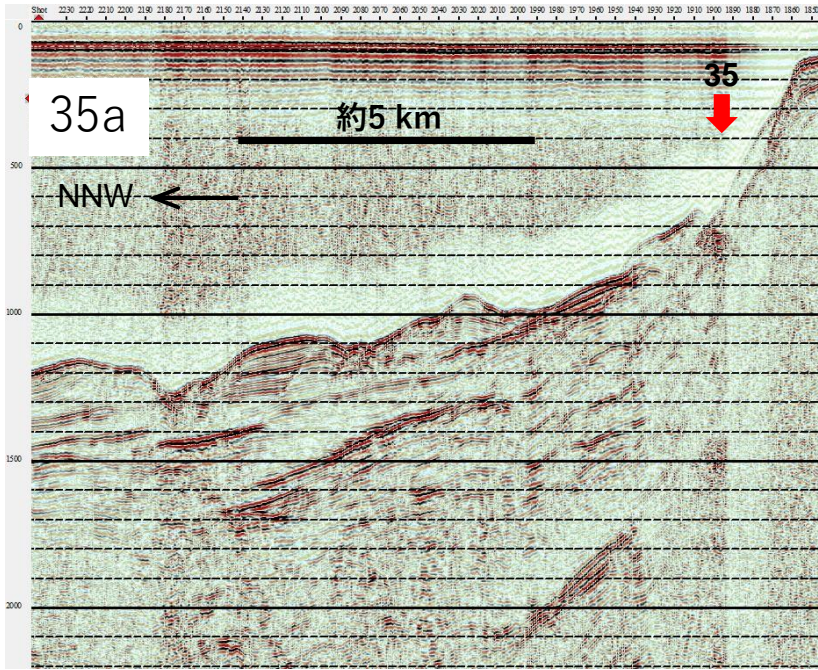


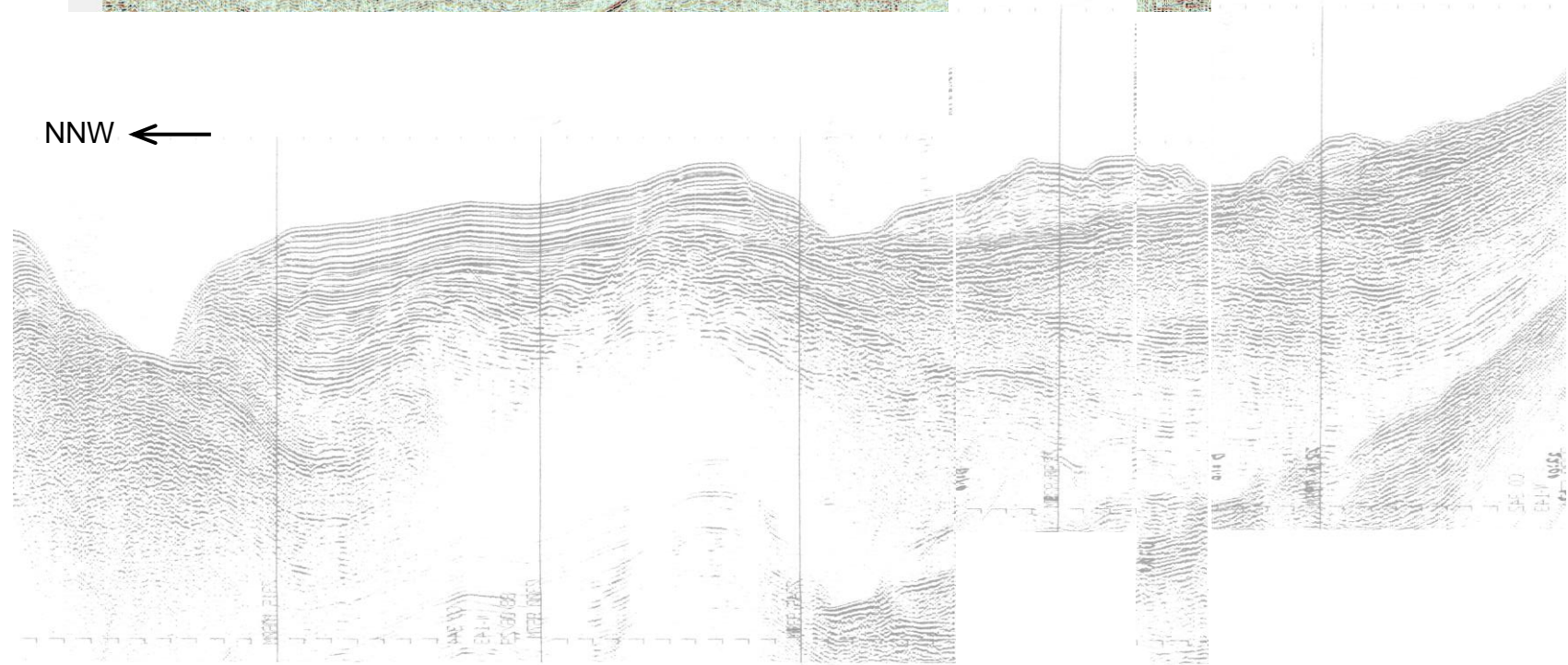
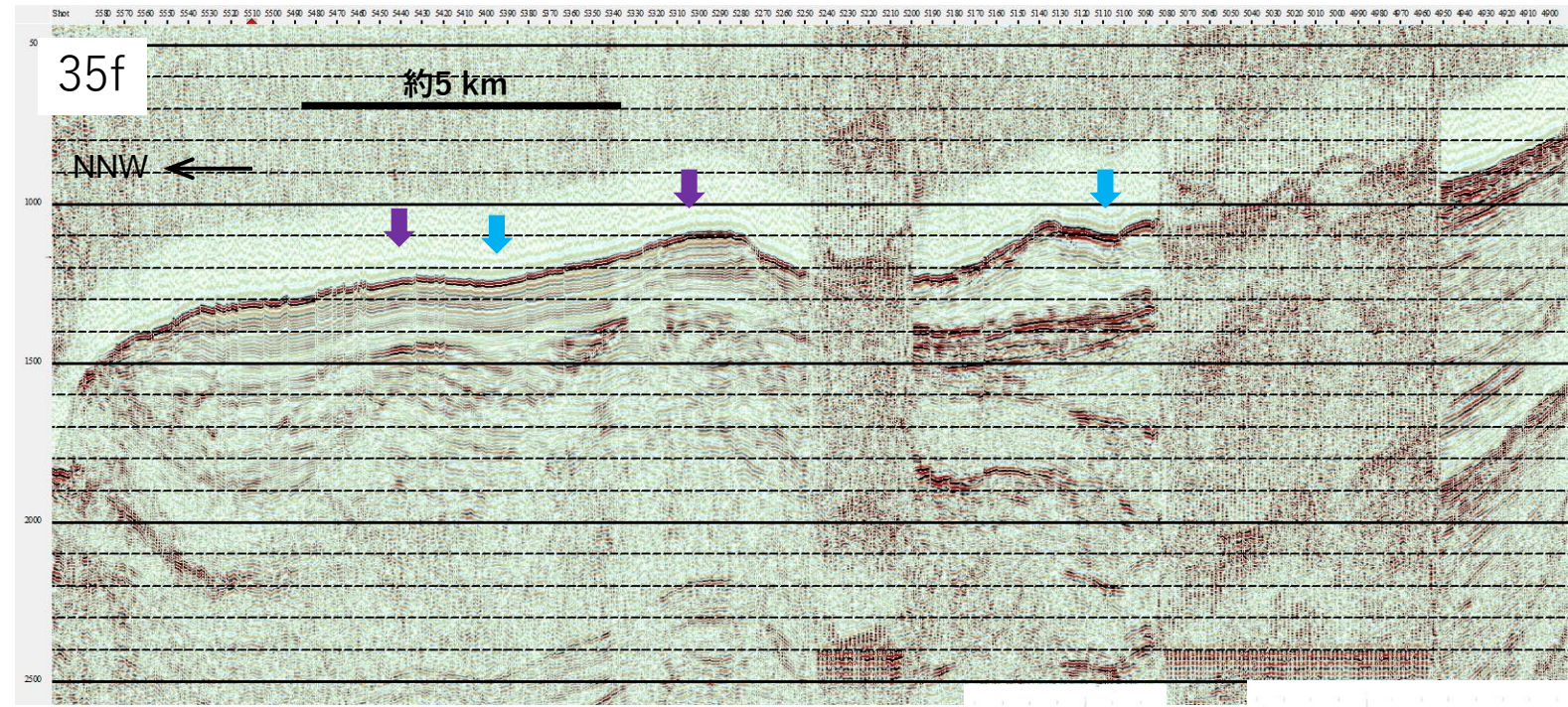
近畿－北陸沖海域断層案及び反射断面 (親不知沖、上越海丘)

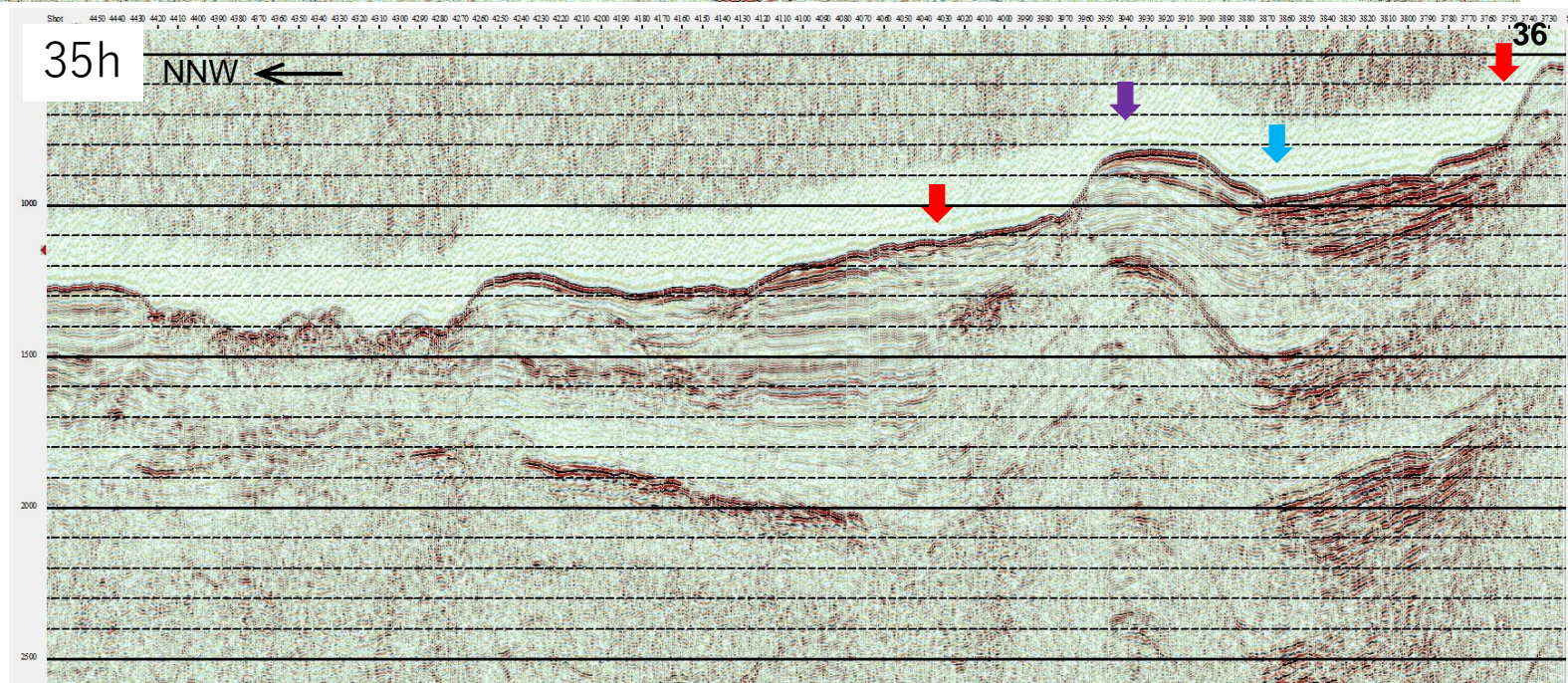
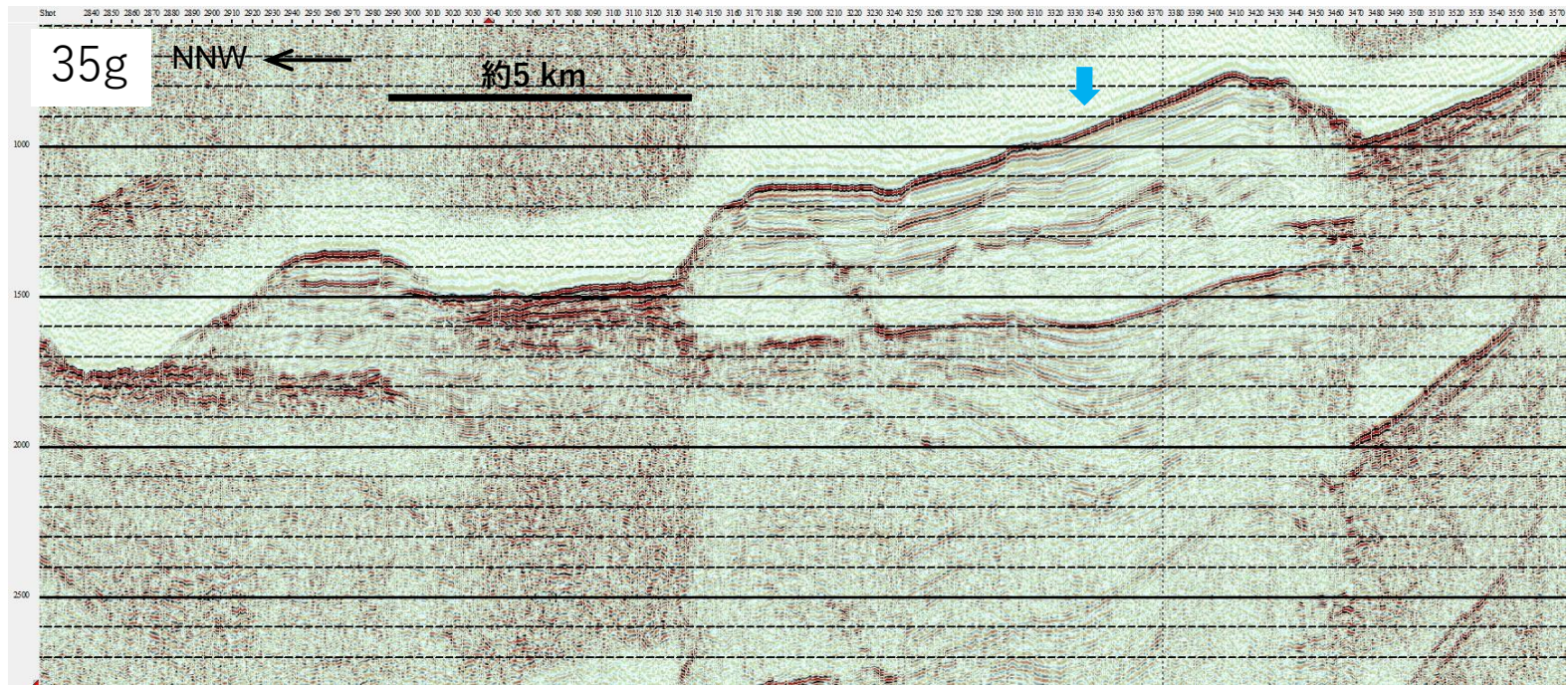
2024/5/20

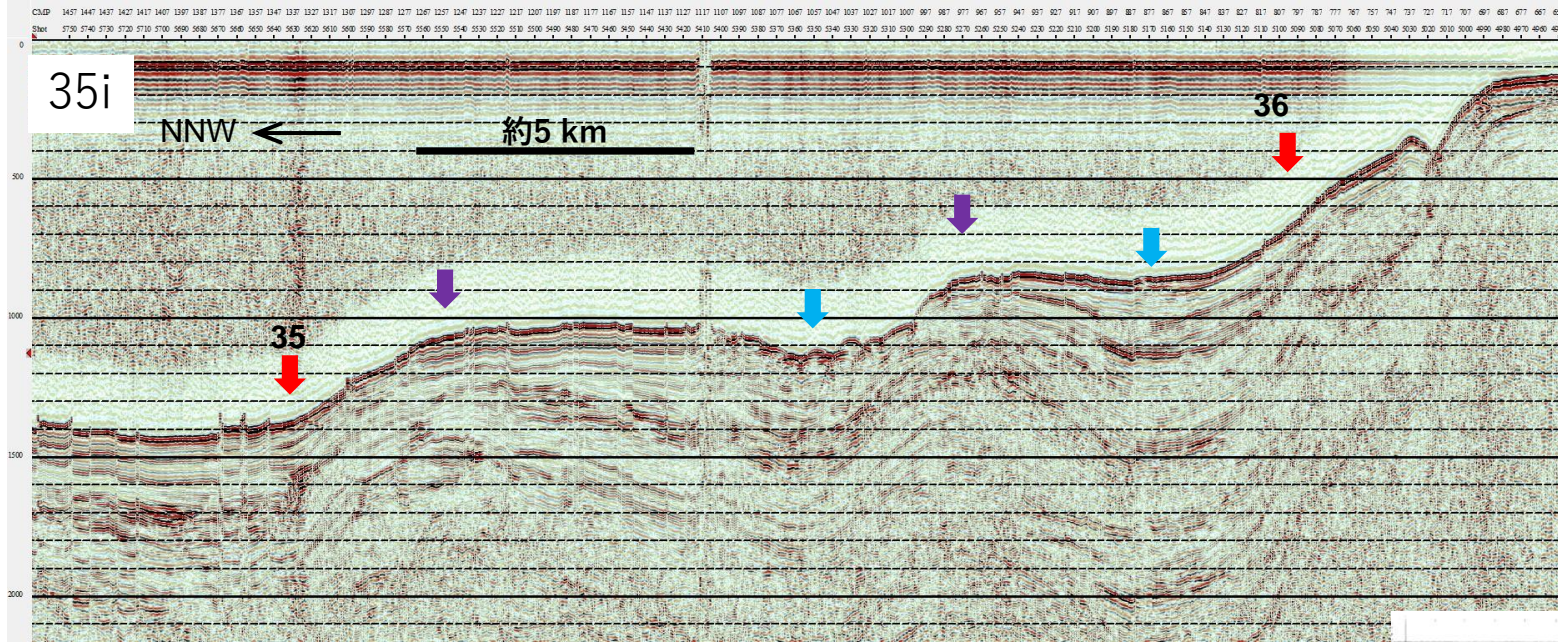
産業技術総合研究所
活断層・火山研究部門
岡村行信



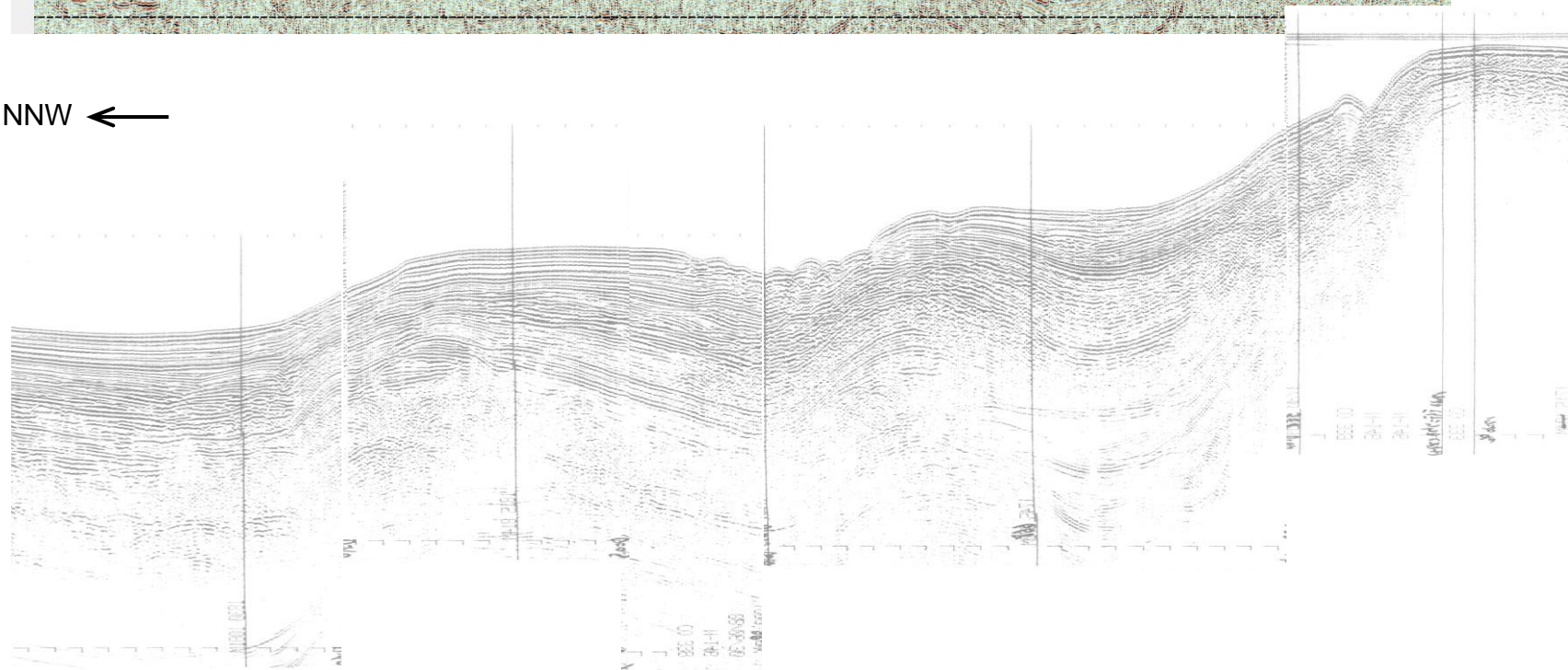


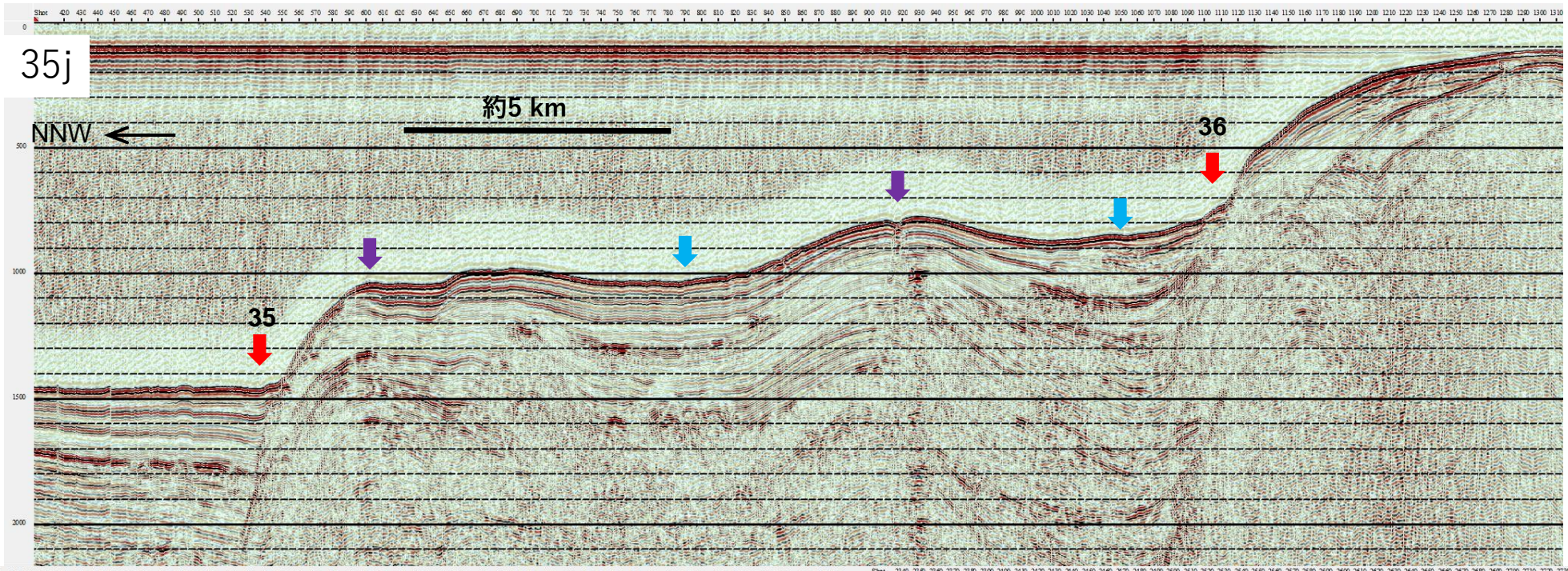




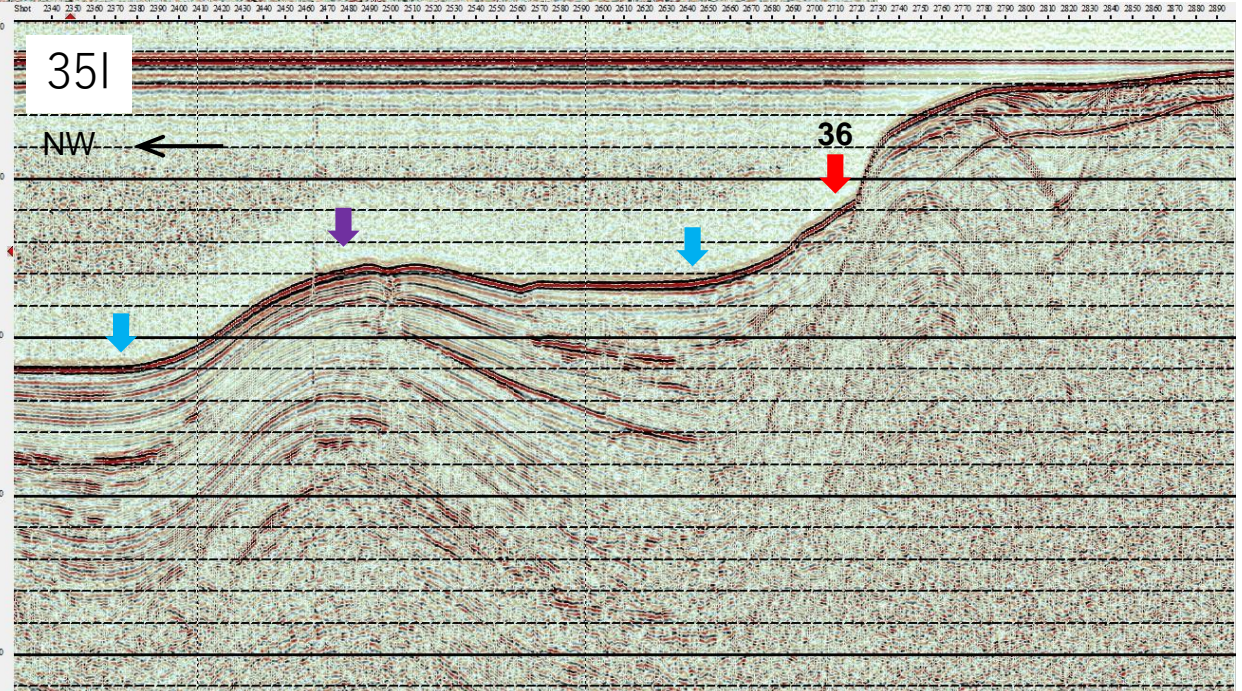
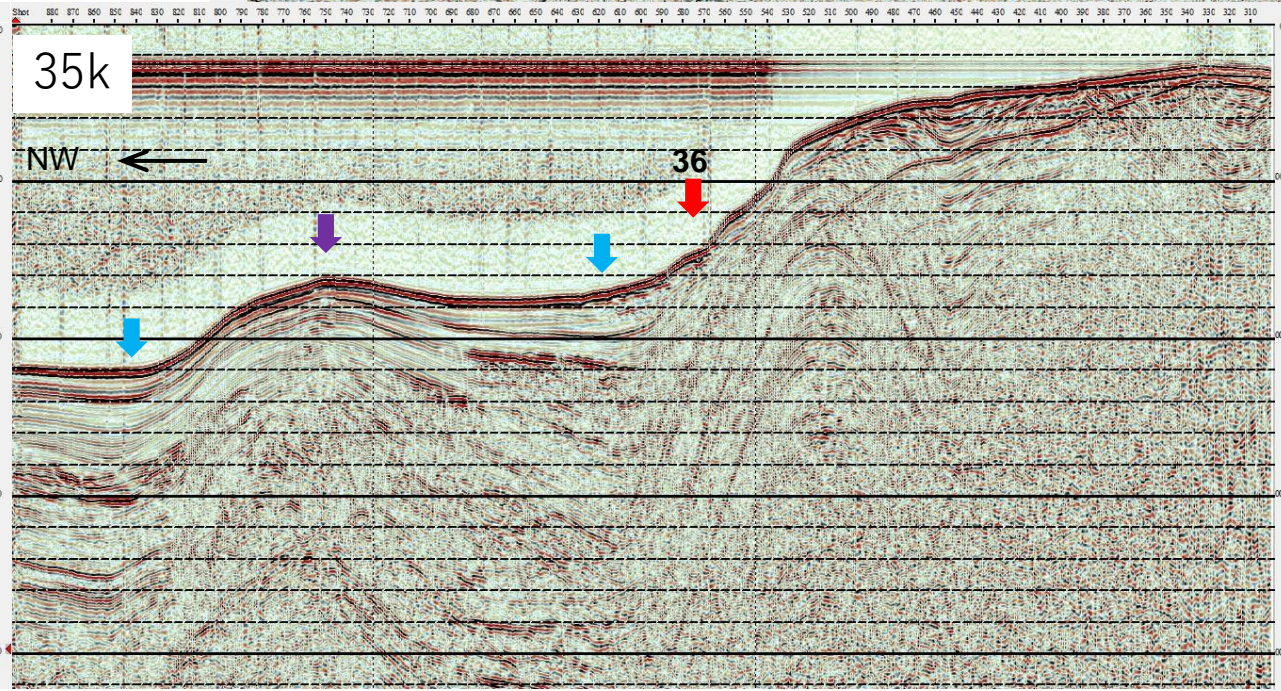


NNW ←

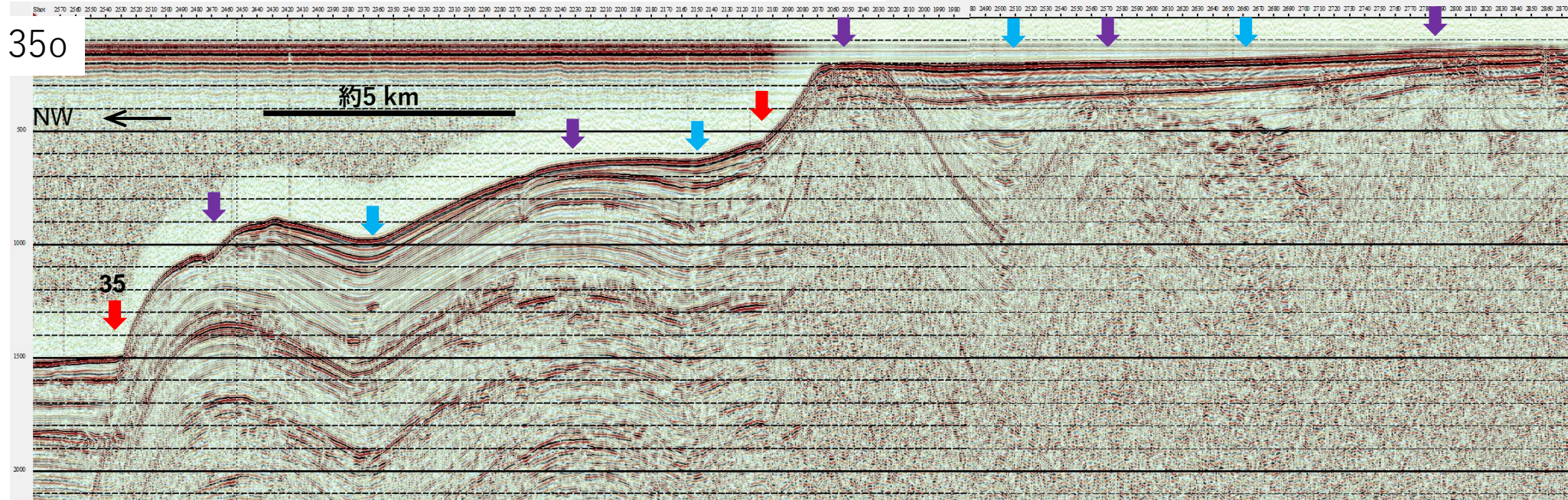




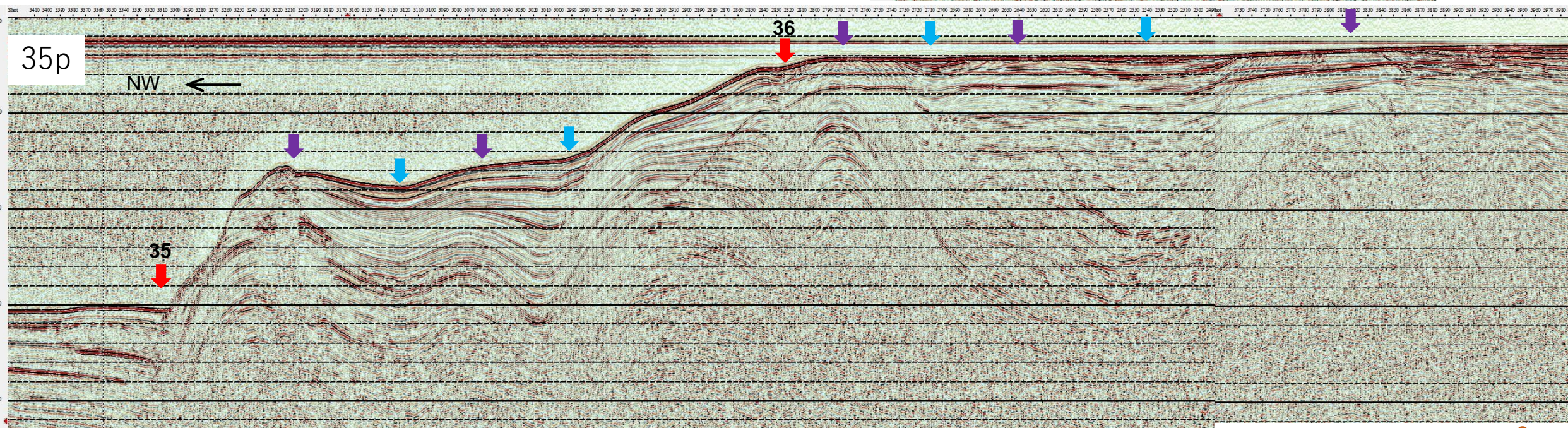
7

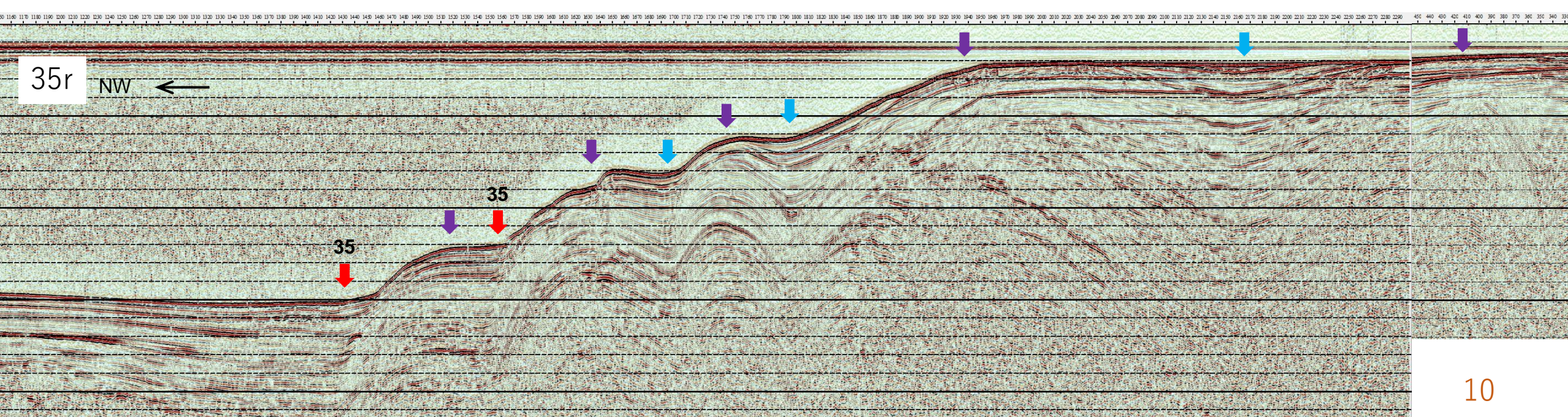
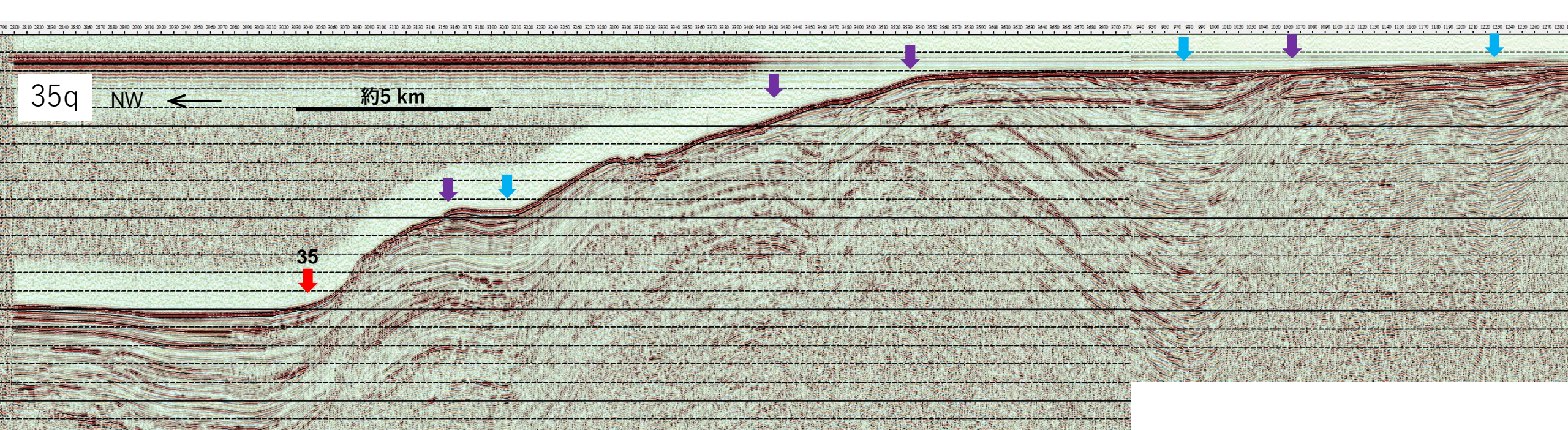


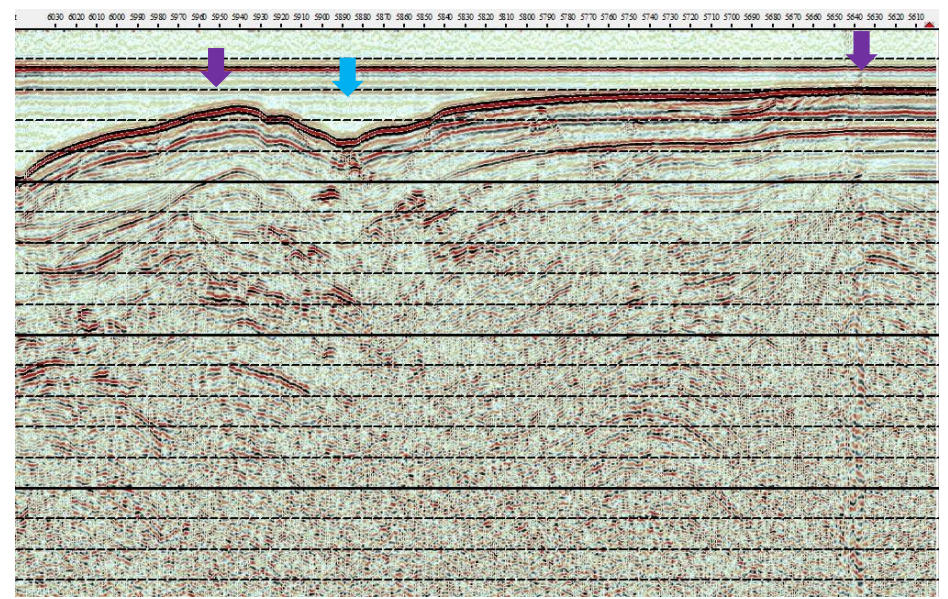
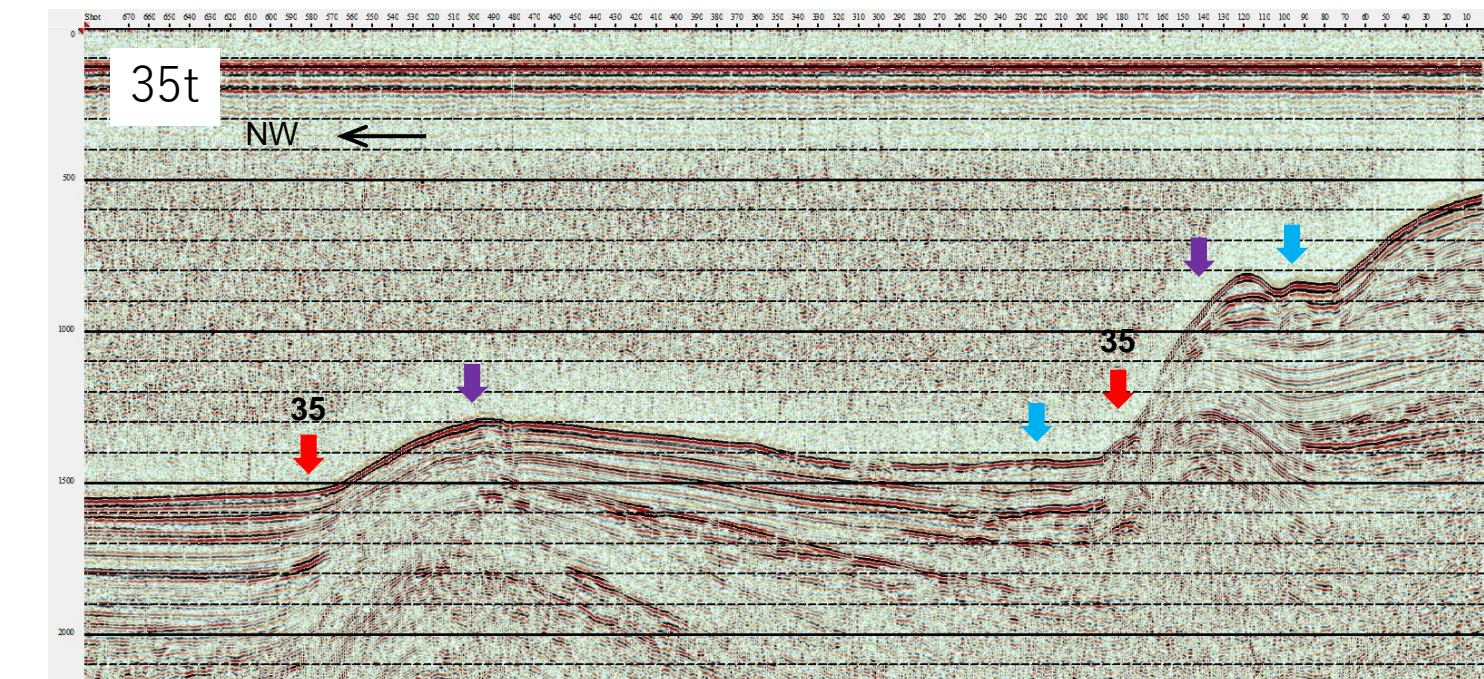
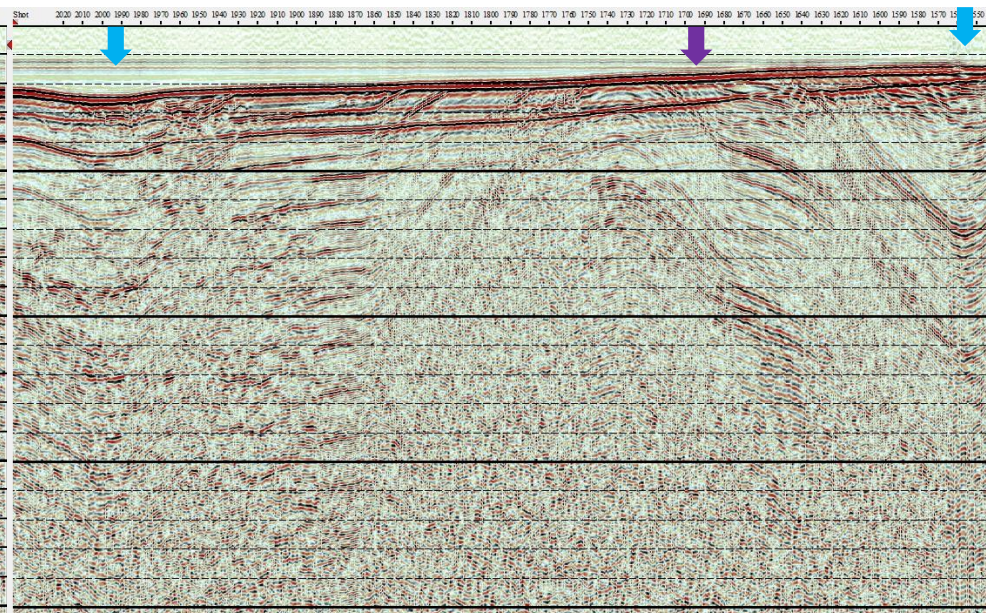
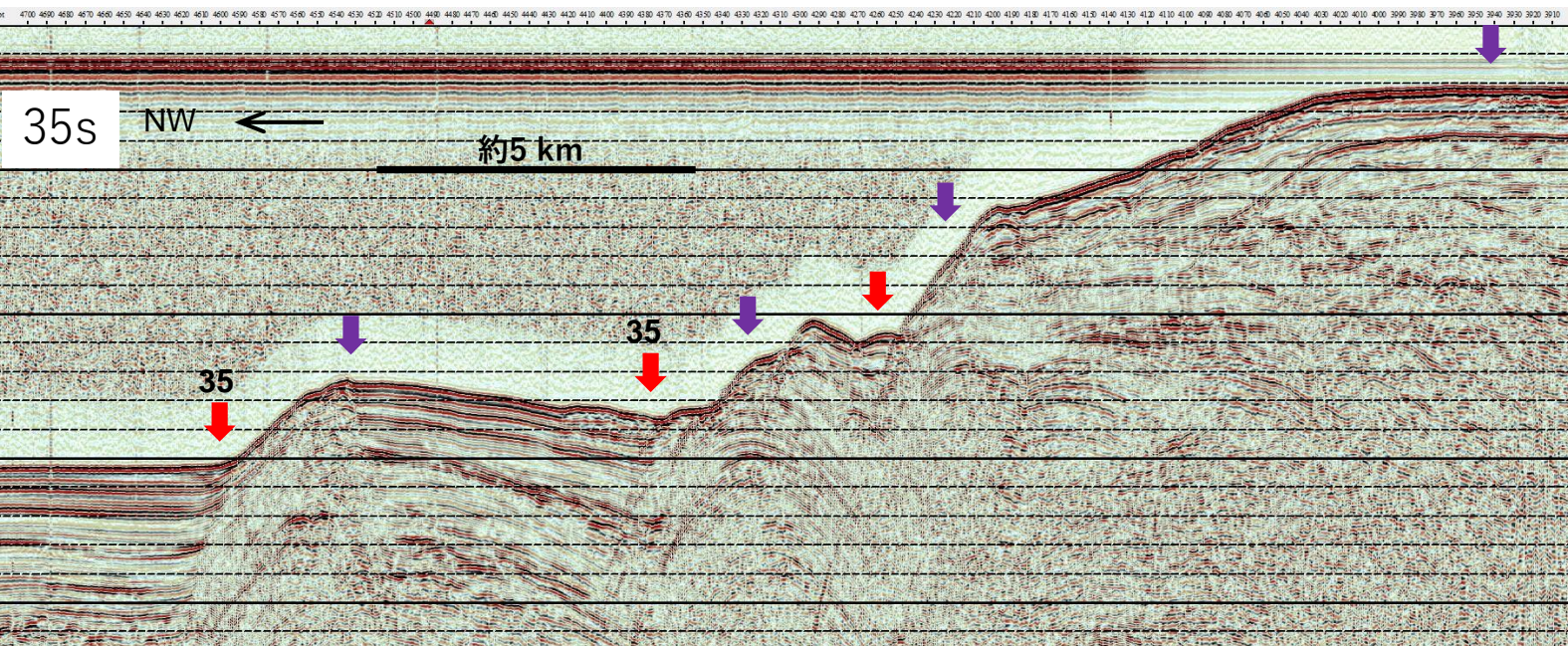
35o



35p



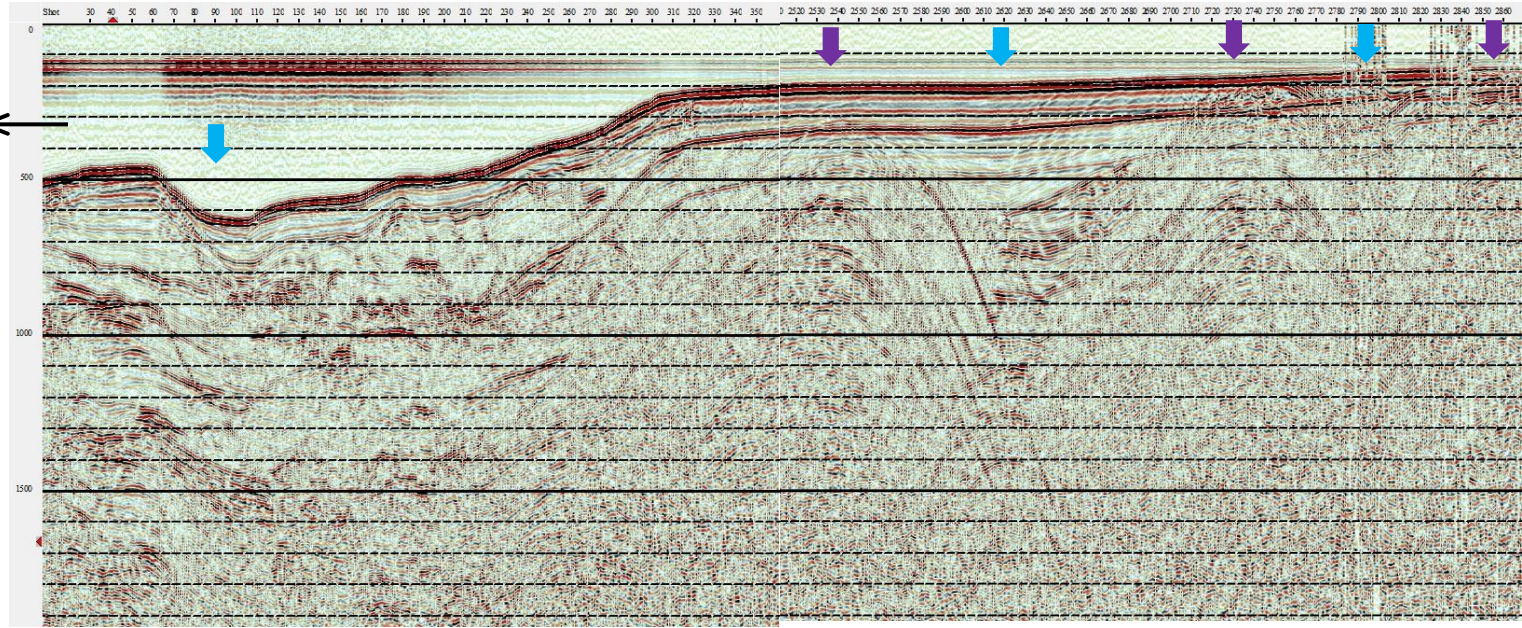




35u

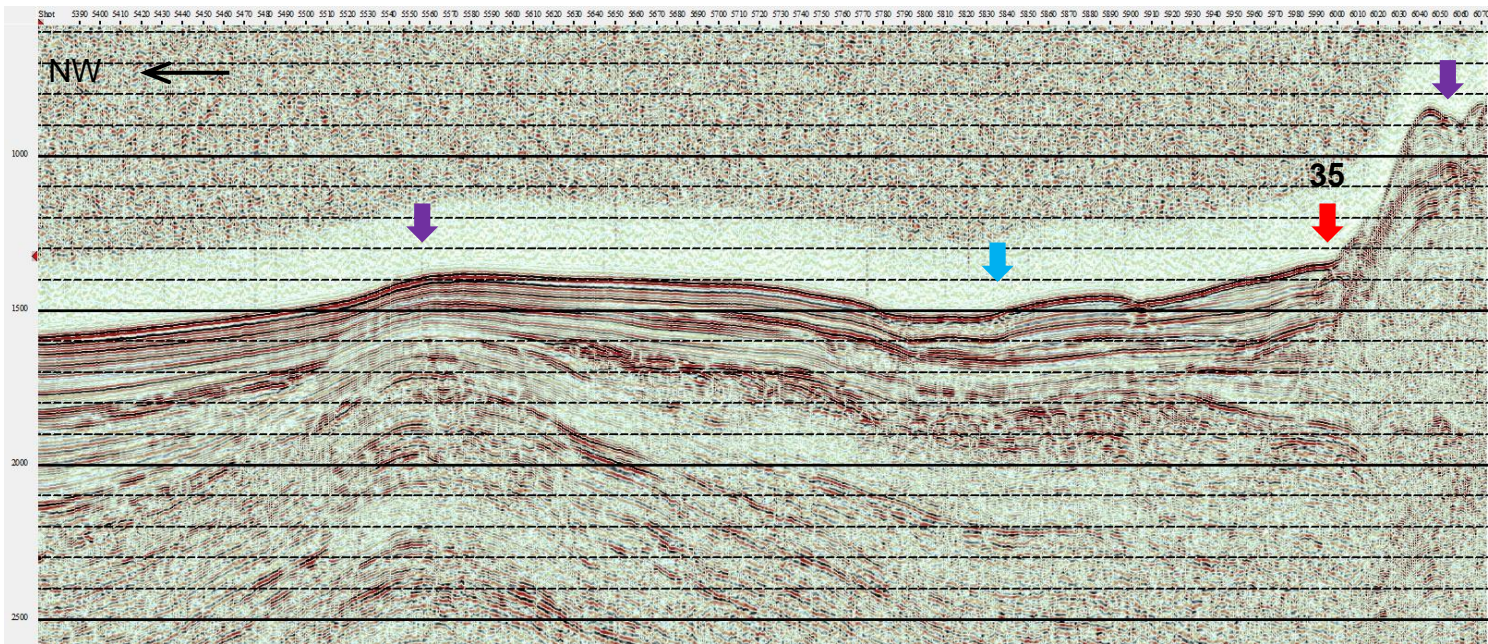
NW ←

約5 km

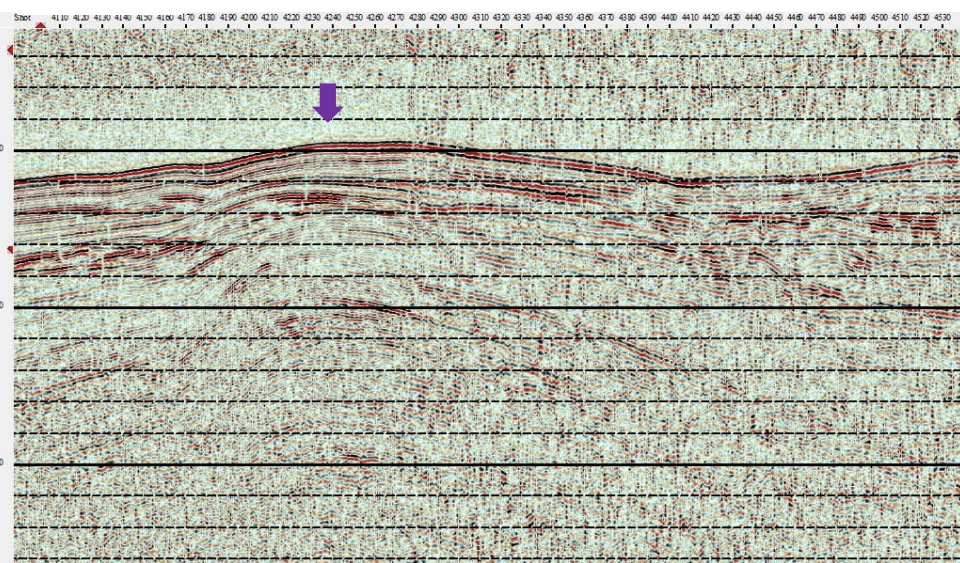


NW ←

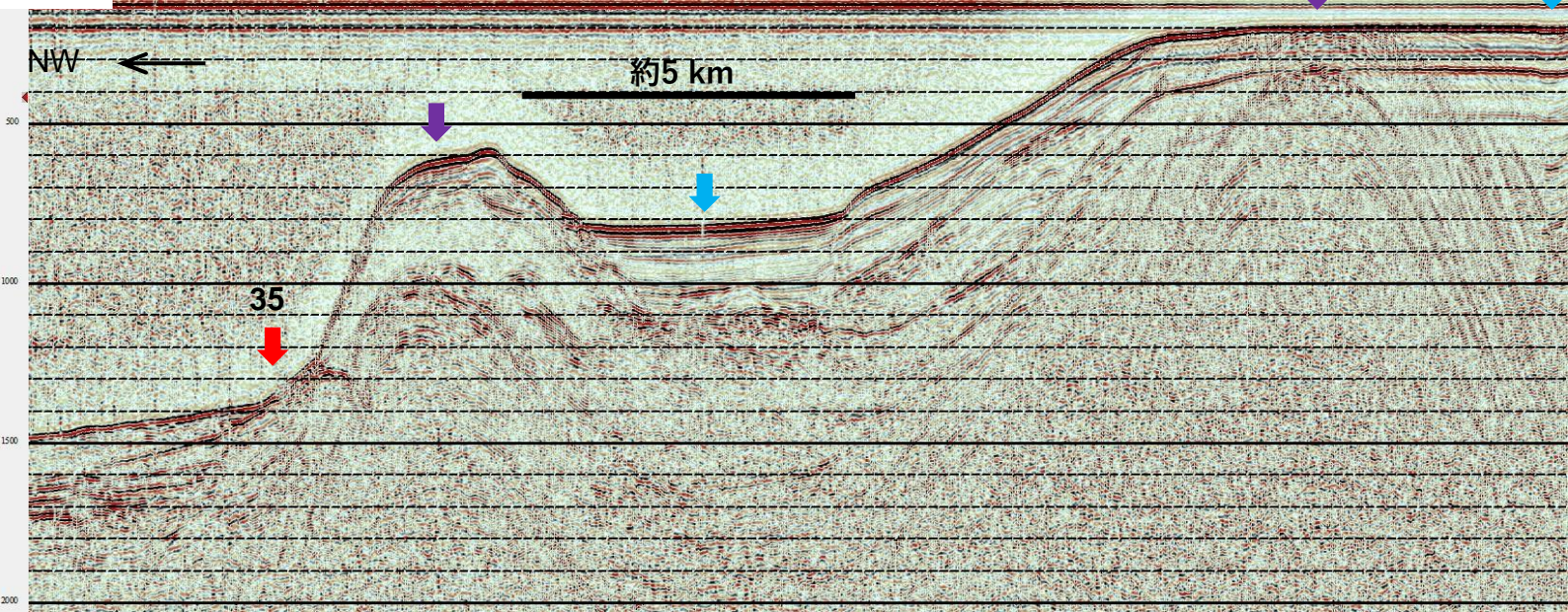
35



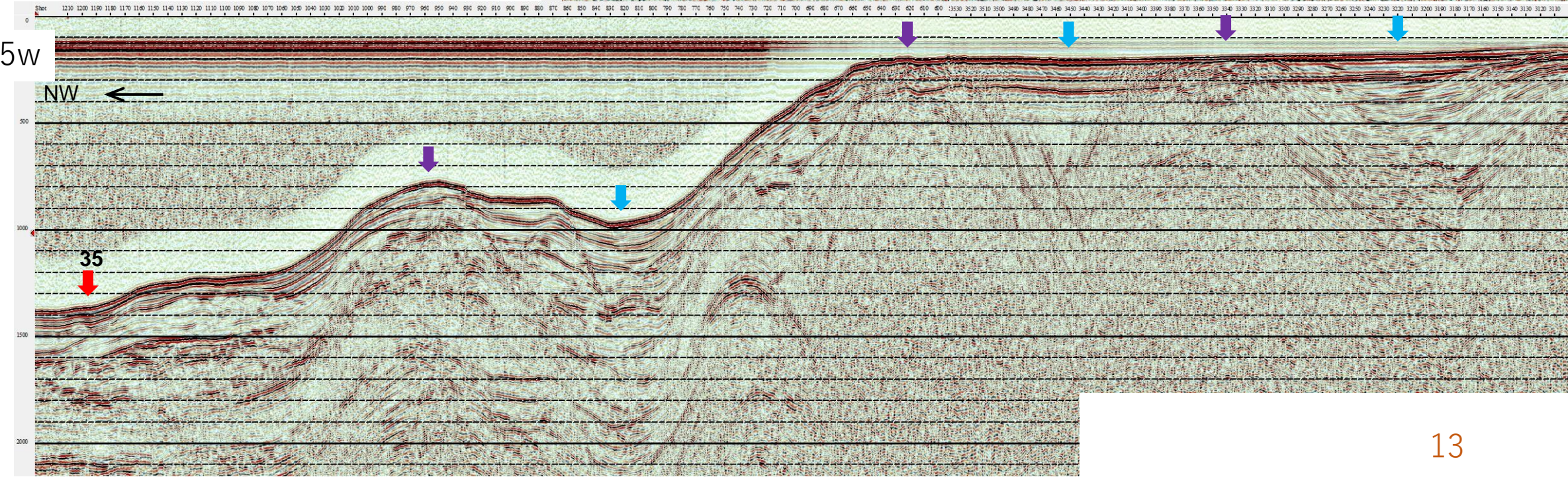
35v-n

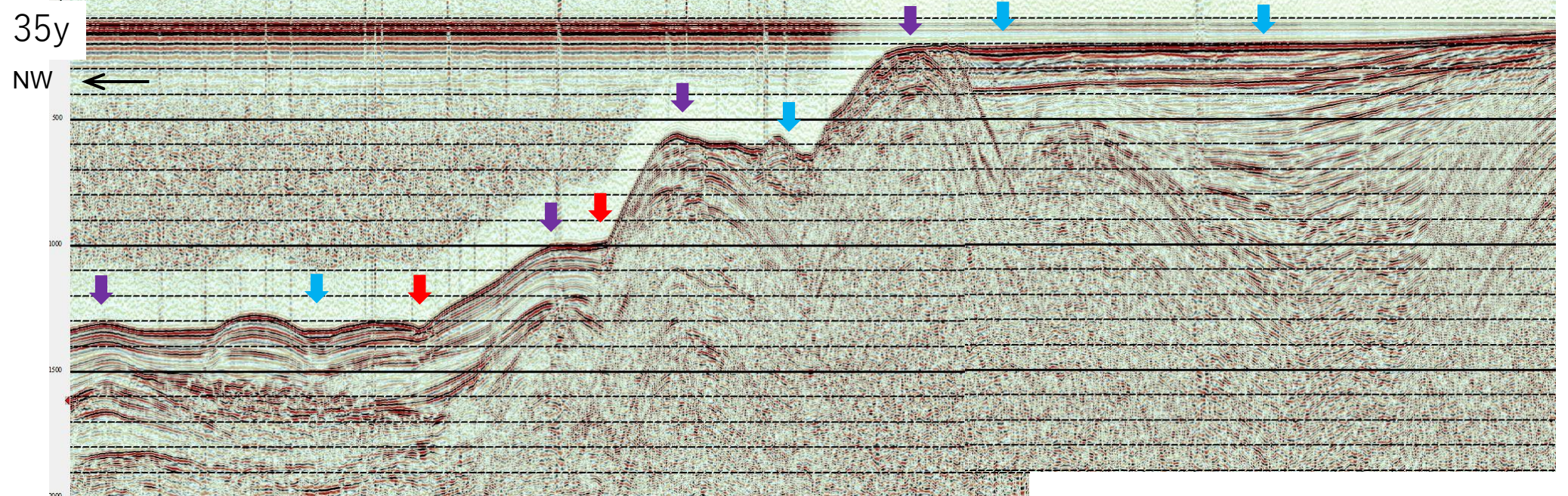
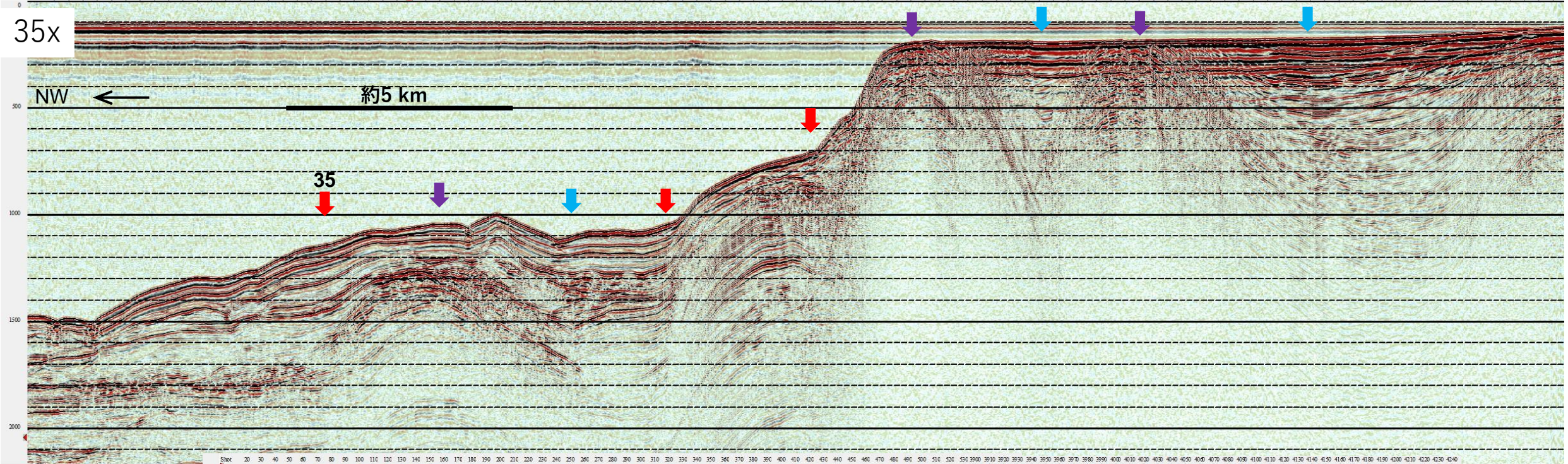


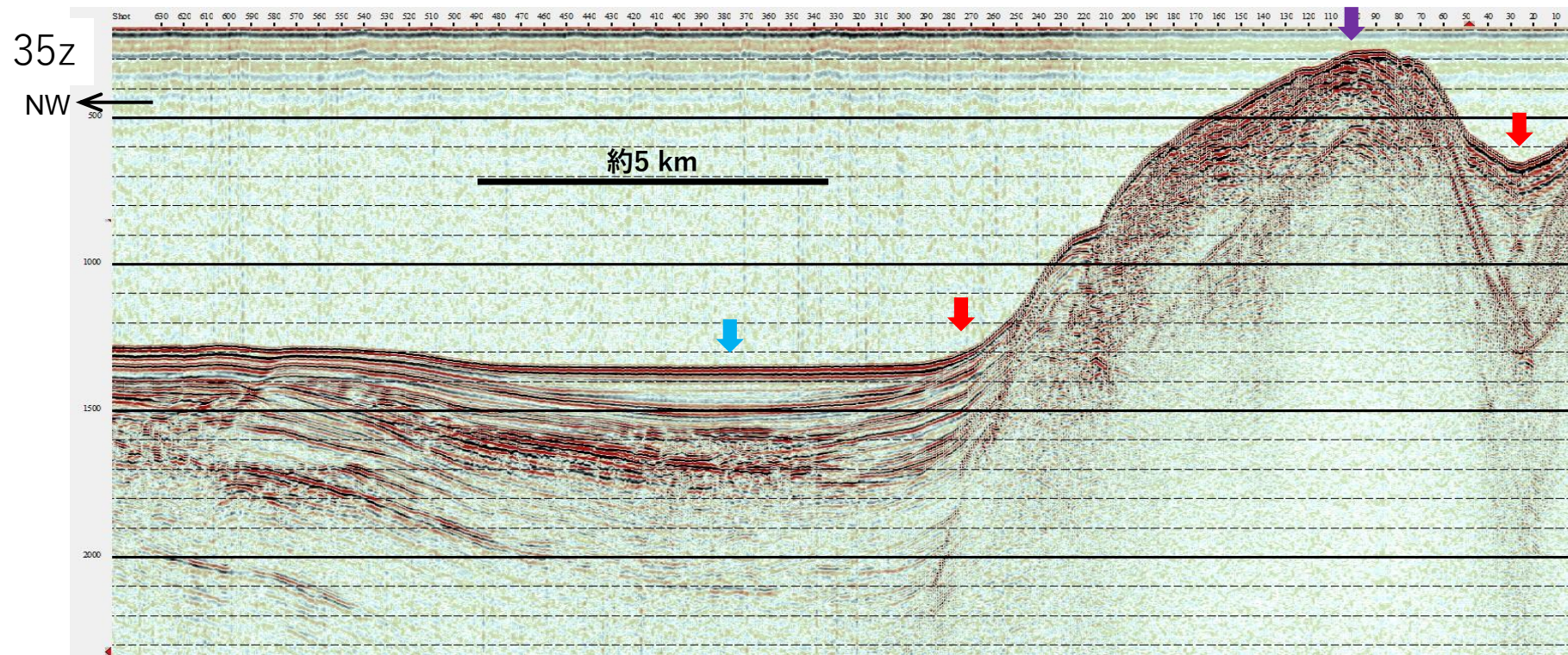
35v



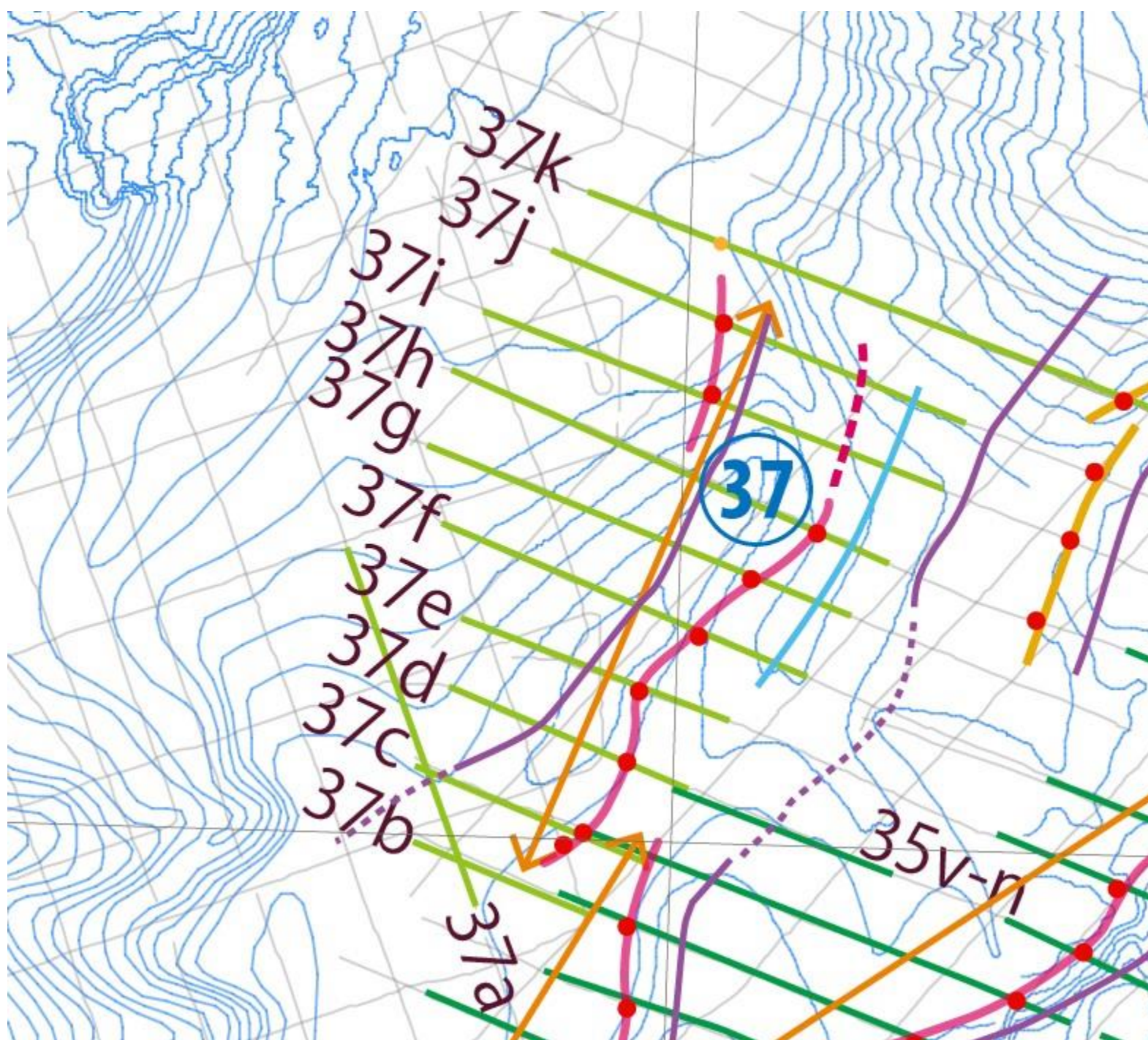
35w



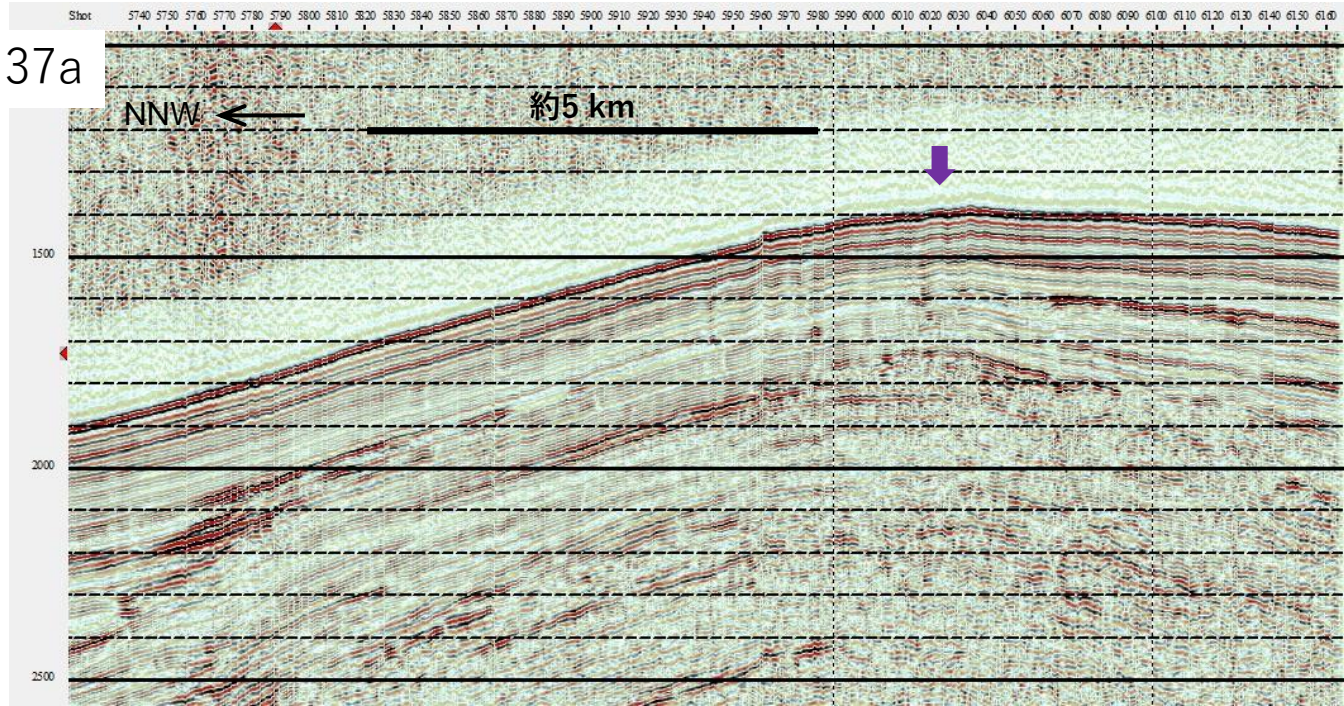




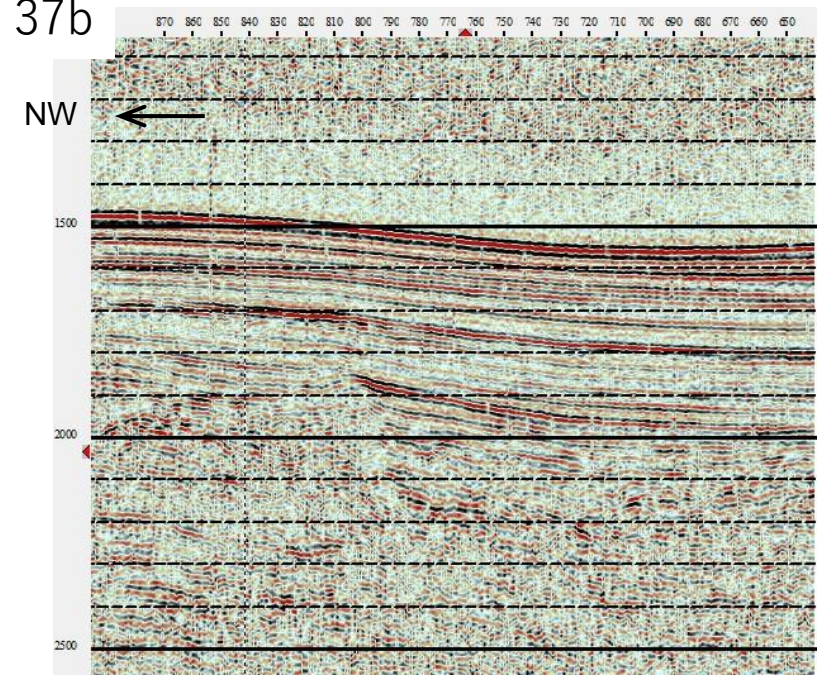
上越海丘



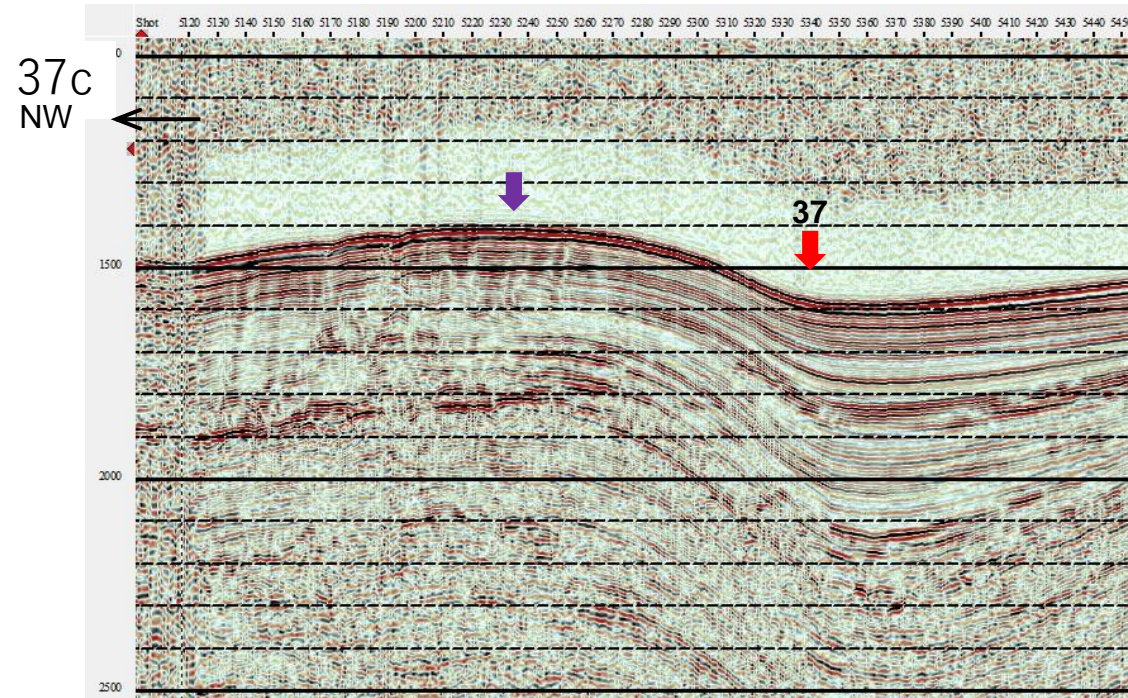
37a



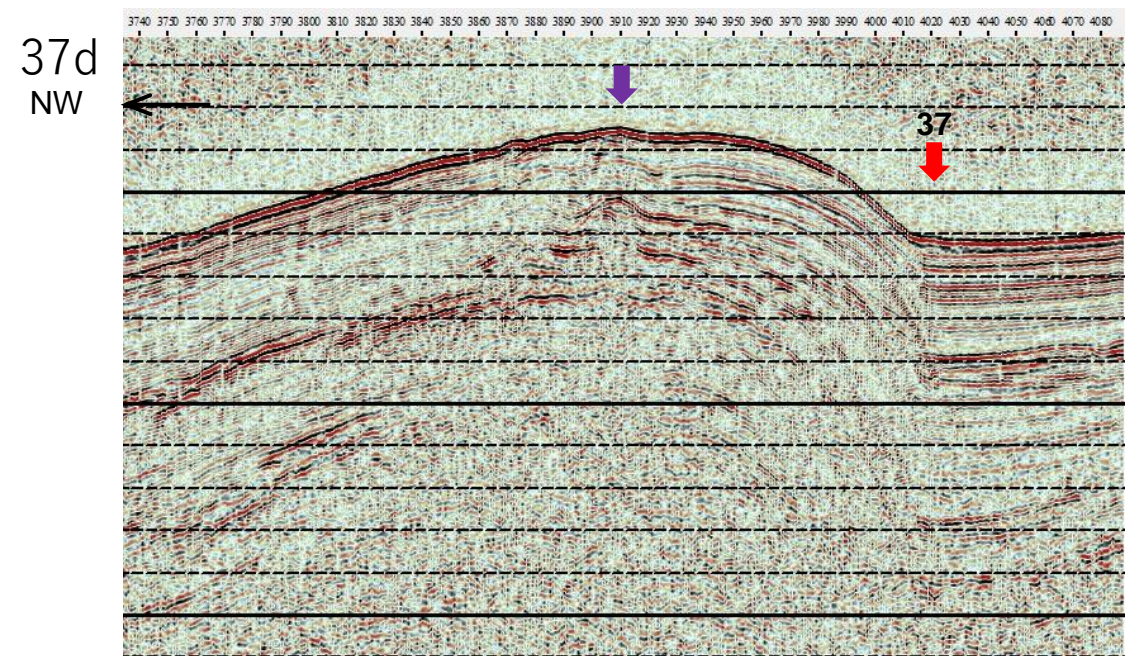
37b

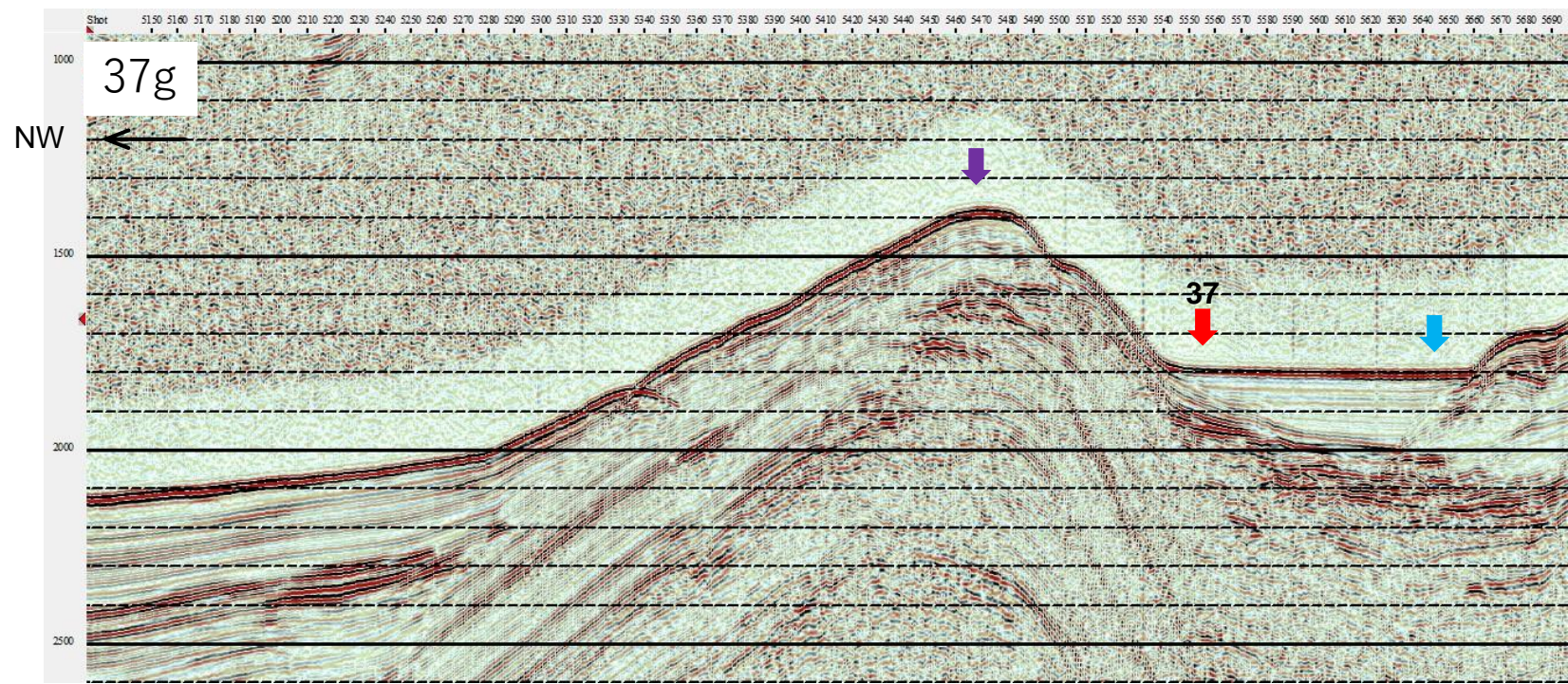
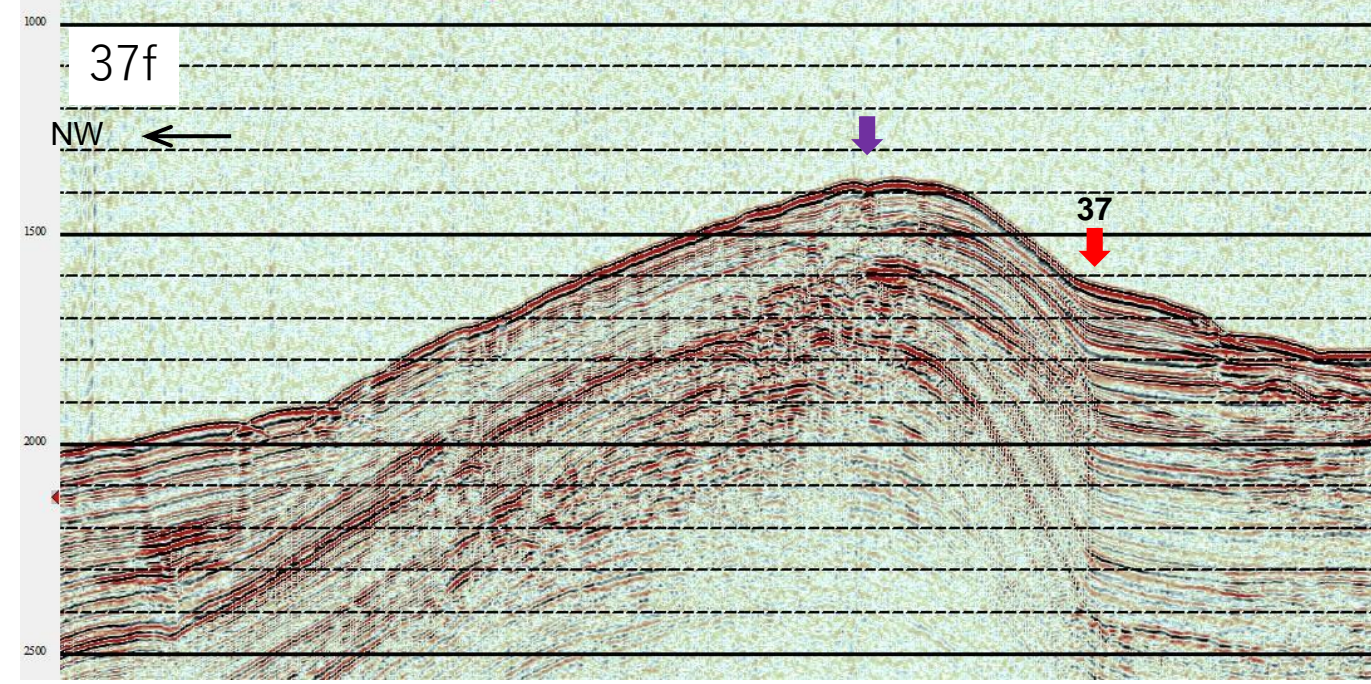
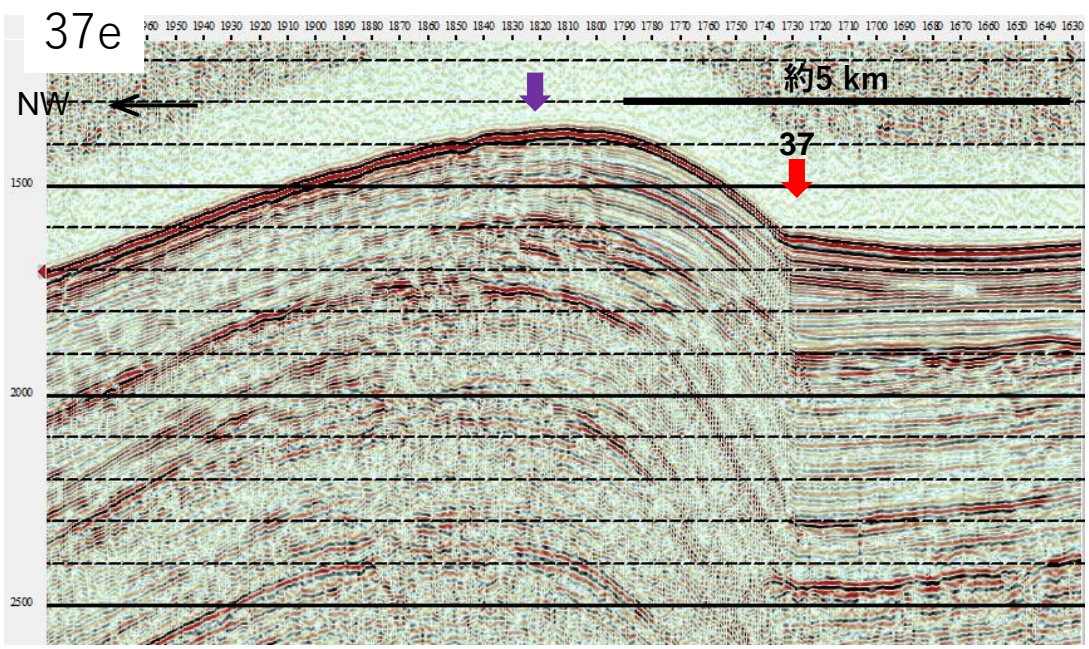


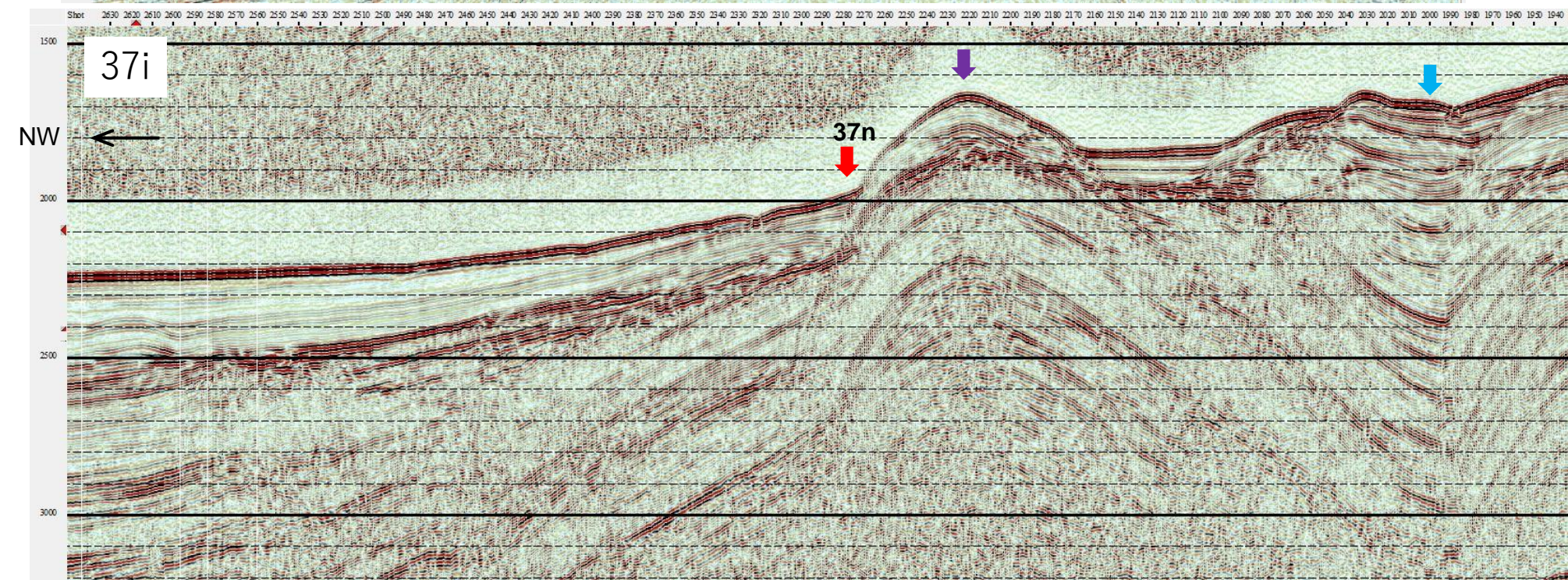
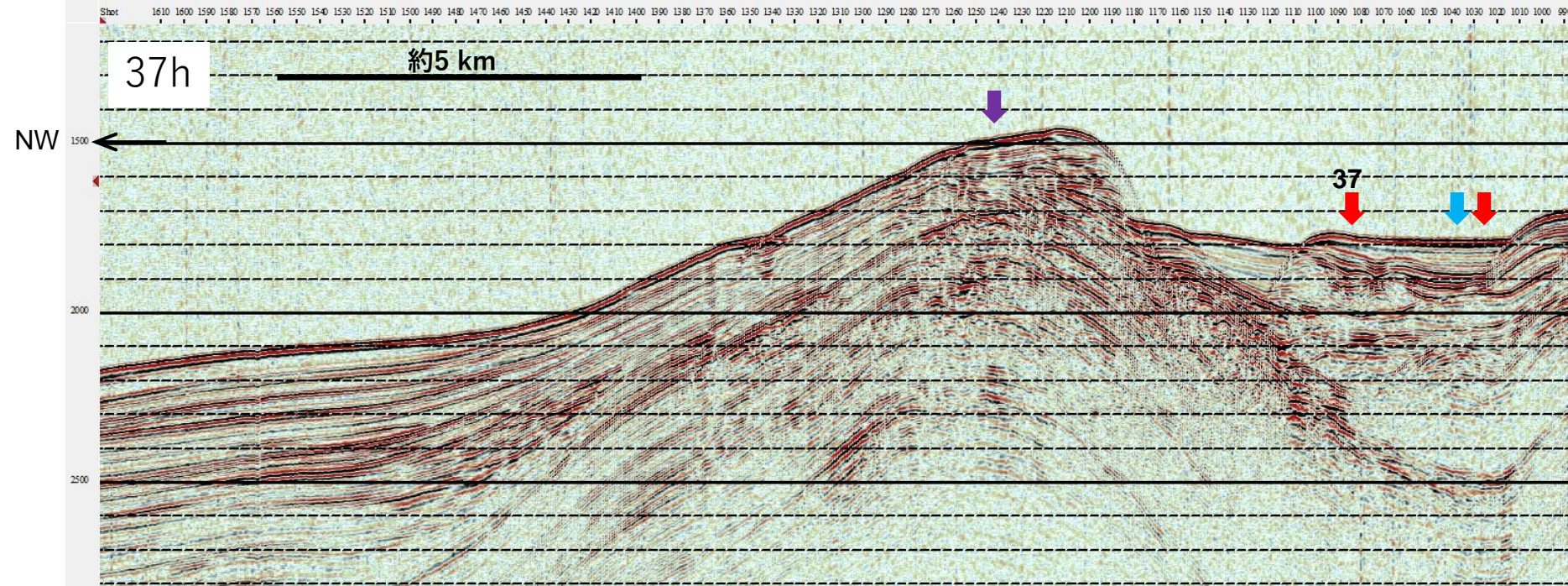
37c



37d

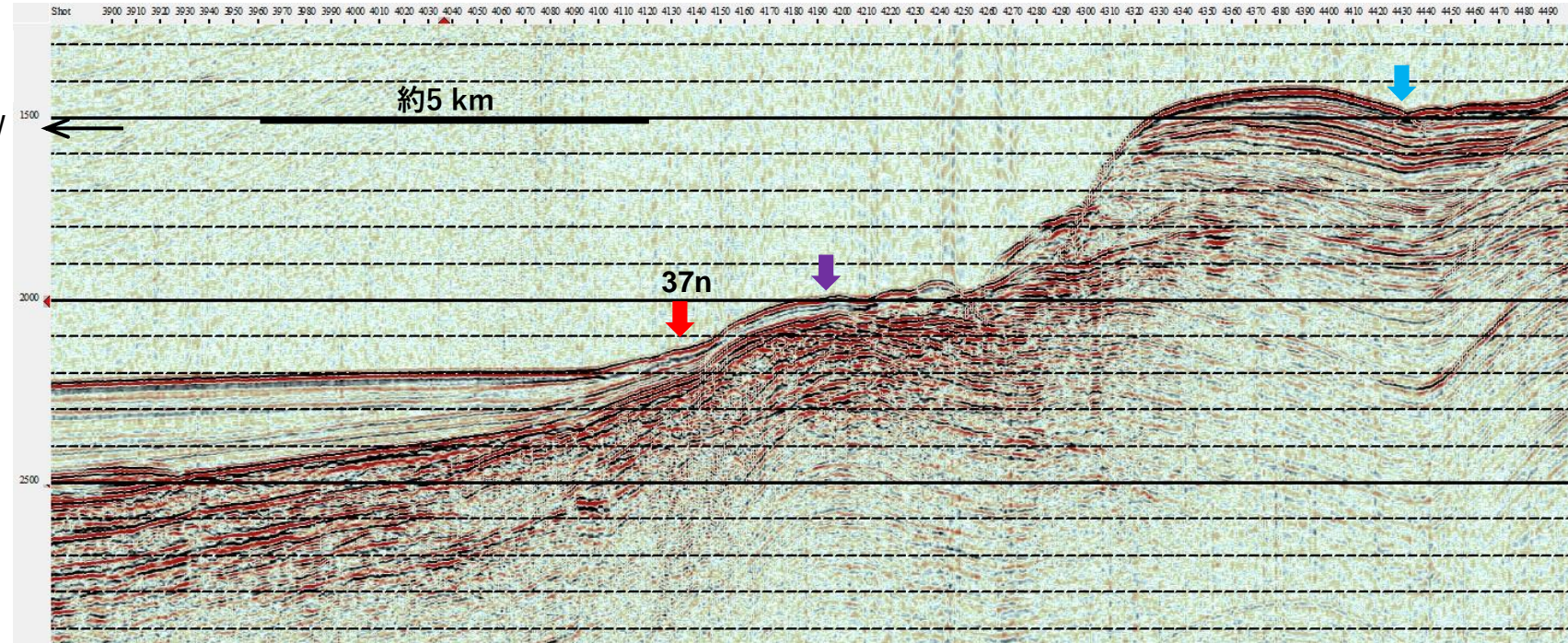






37j

NW ←



37k

NW ←

