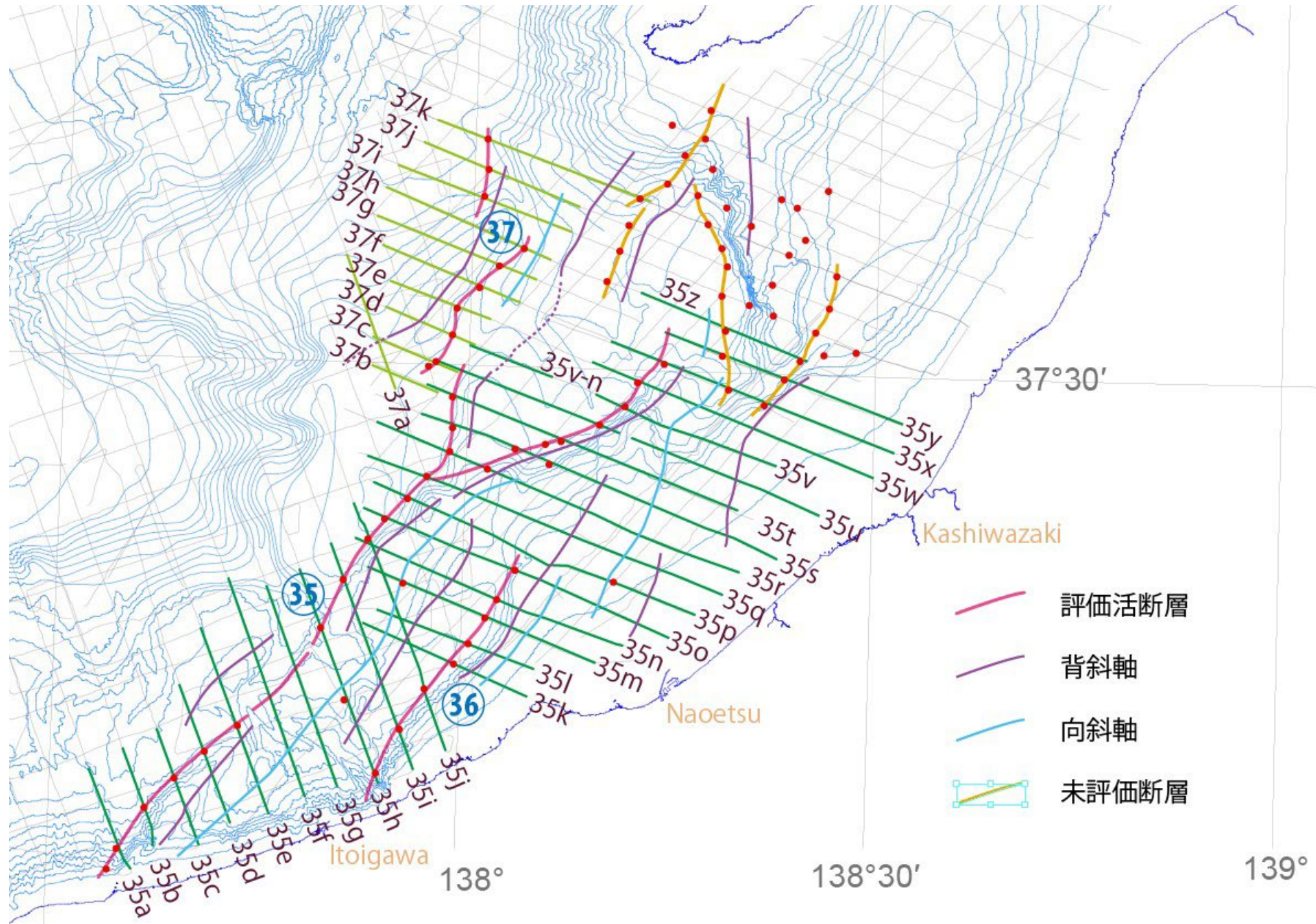


近畿－北陸沖海域断層案及び反射断面 (親不知沖、上越海丘)

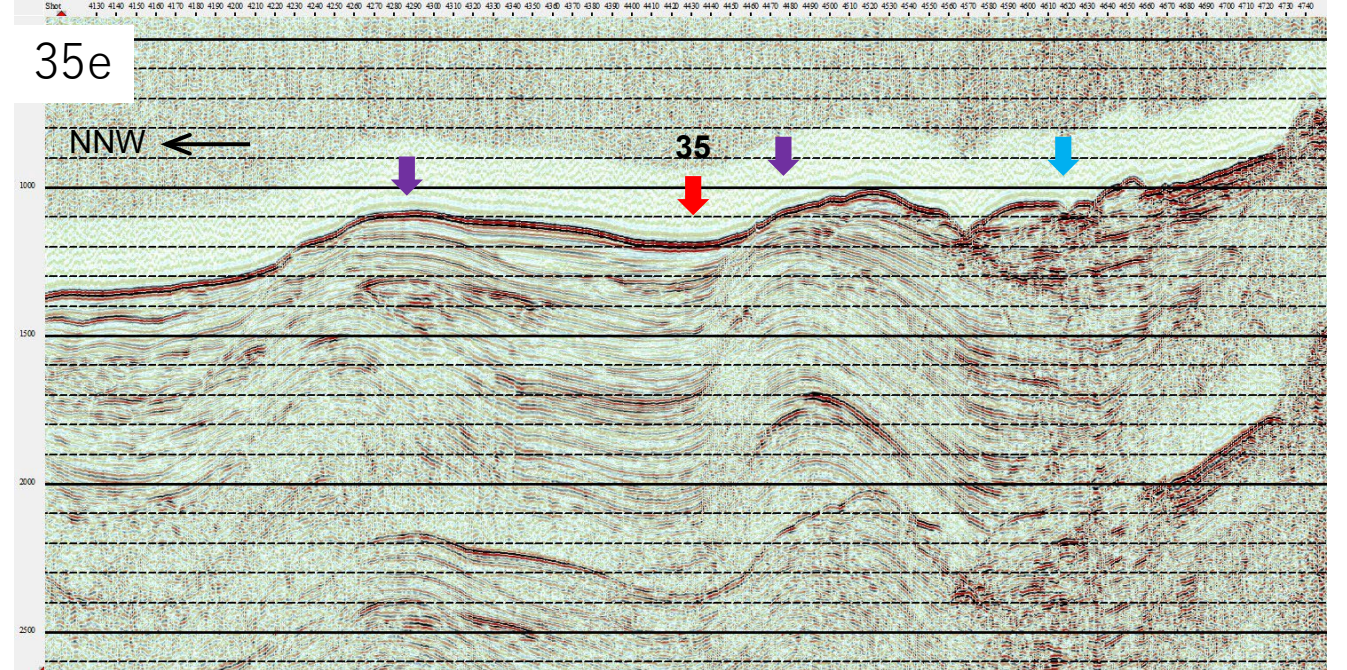
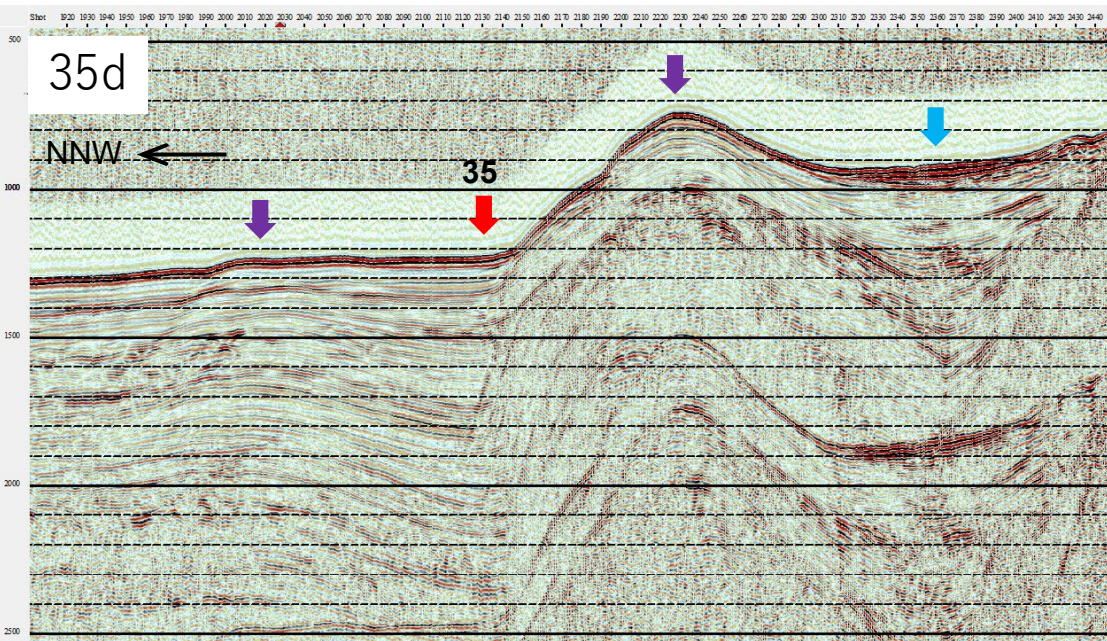
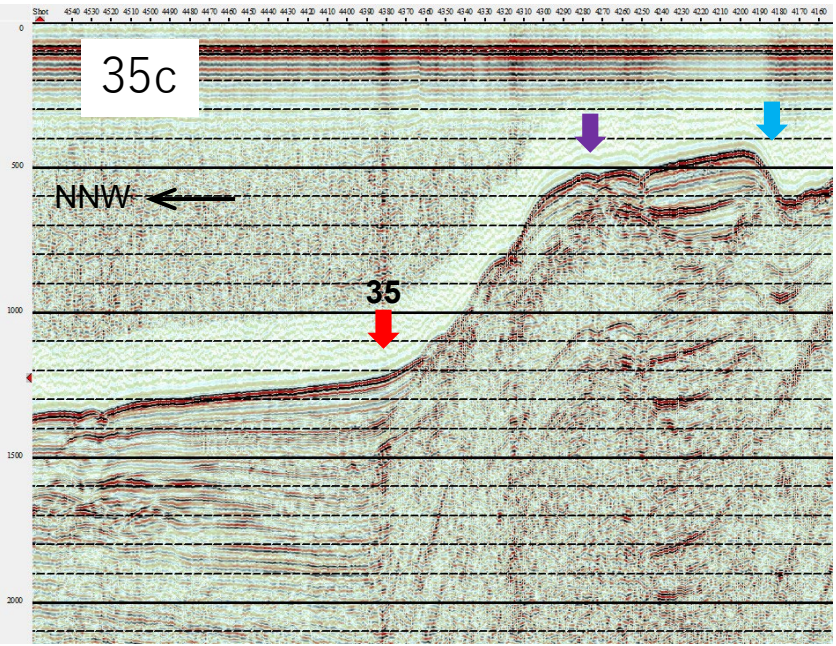
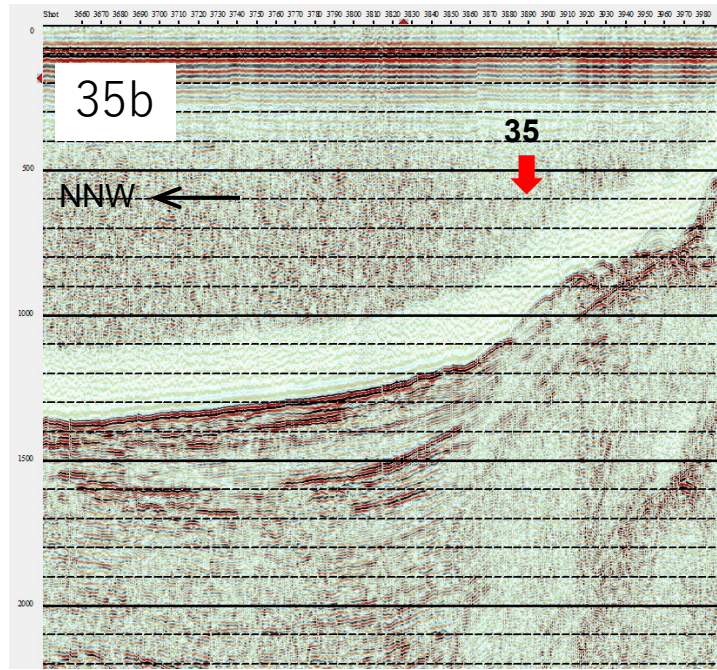
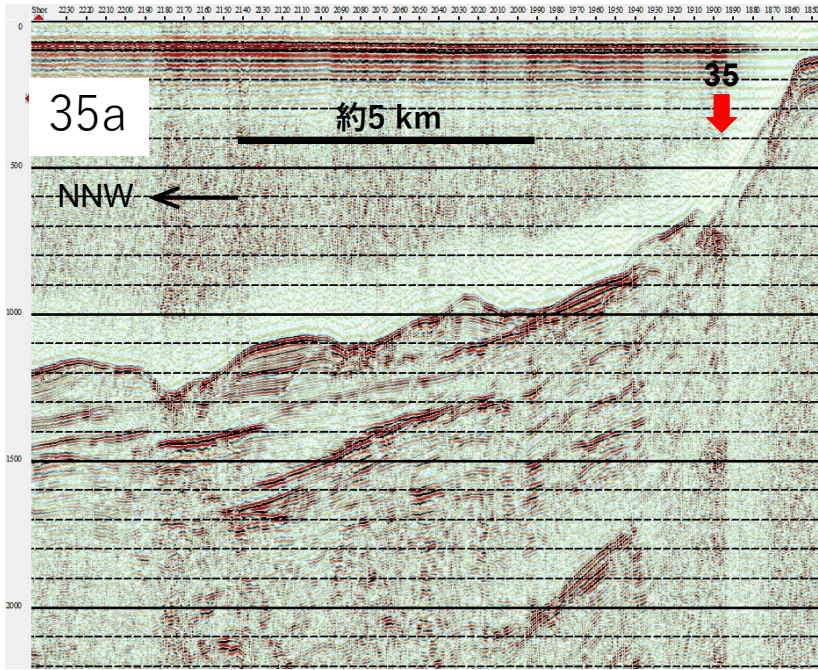
2024/4/26

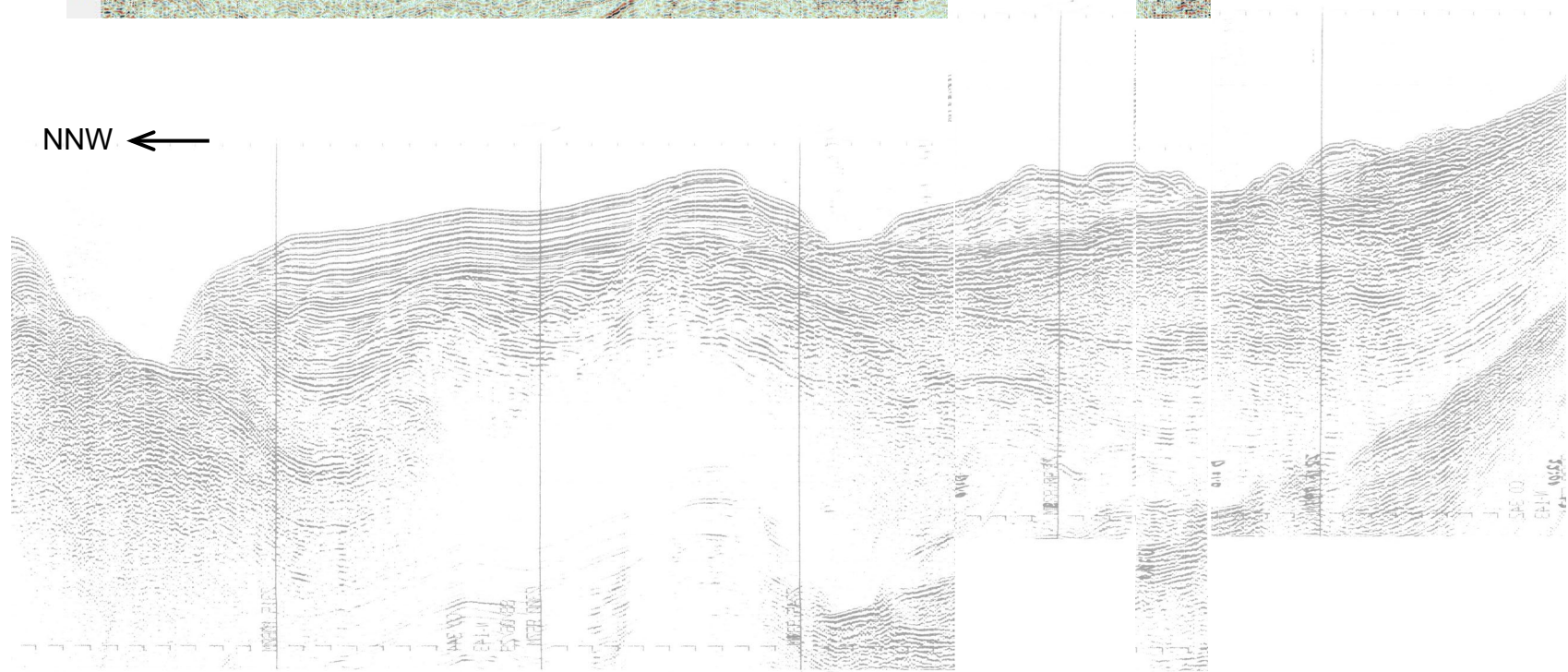
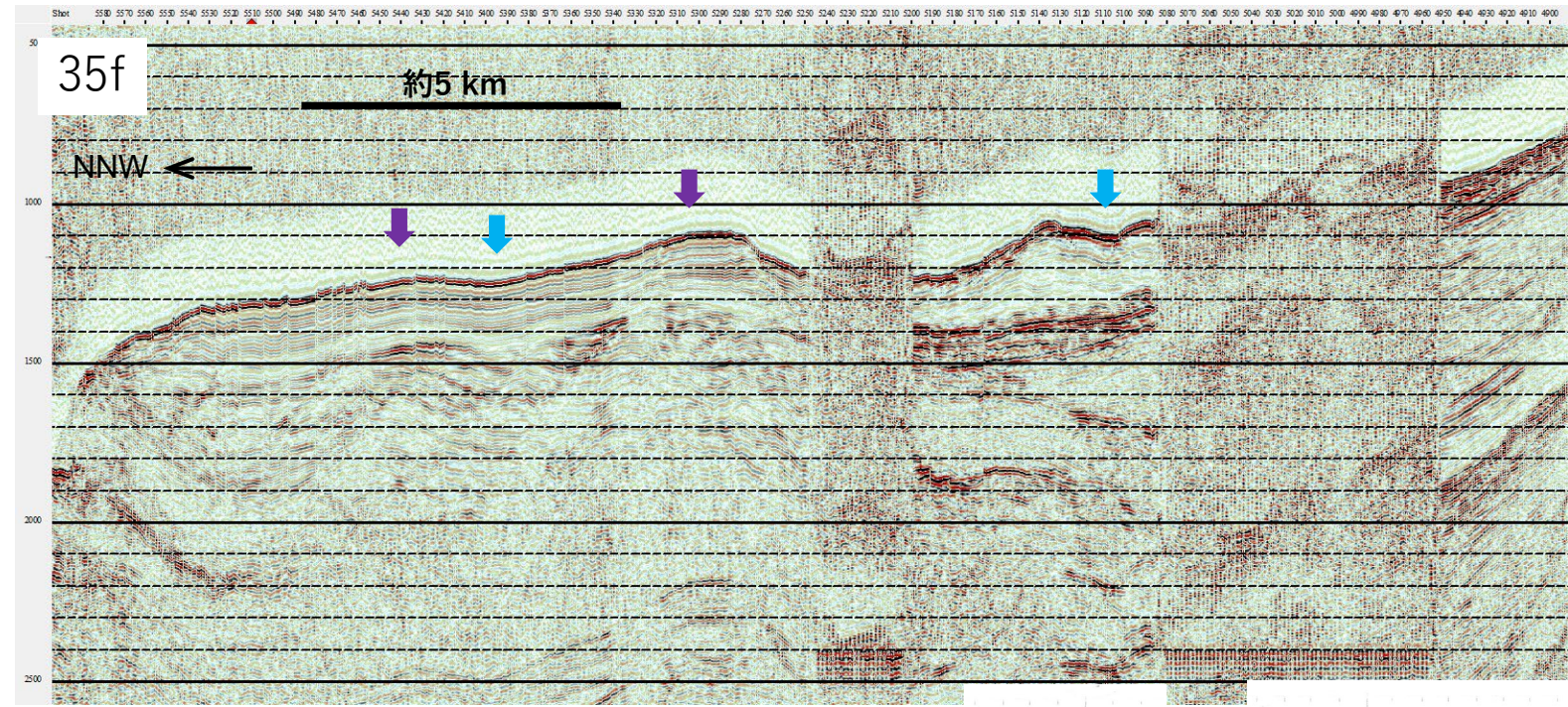
産業技術総合研究所
活断層・火山研究部門
岡村行信

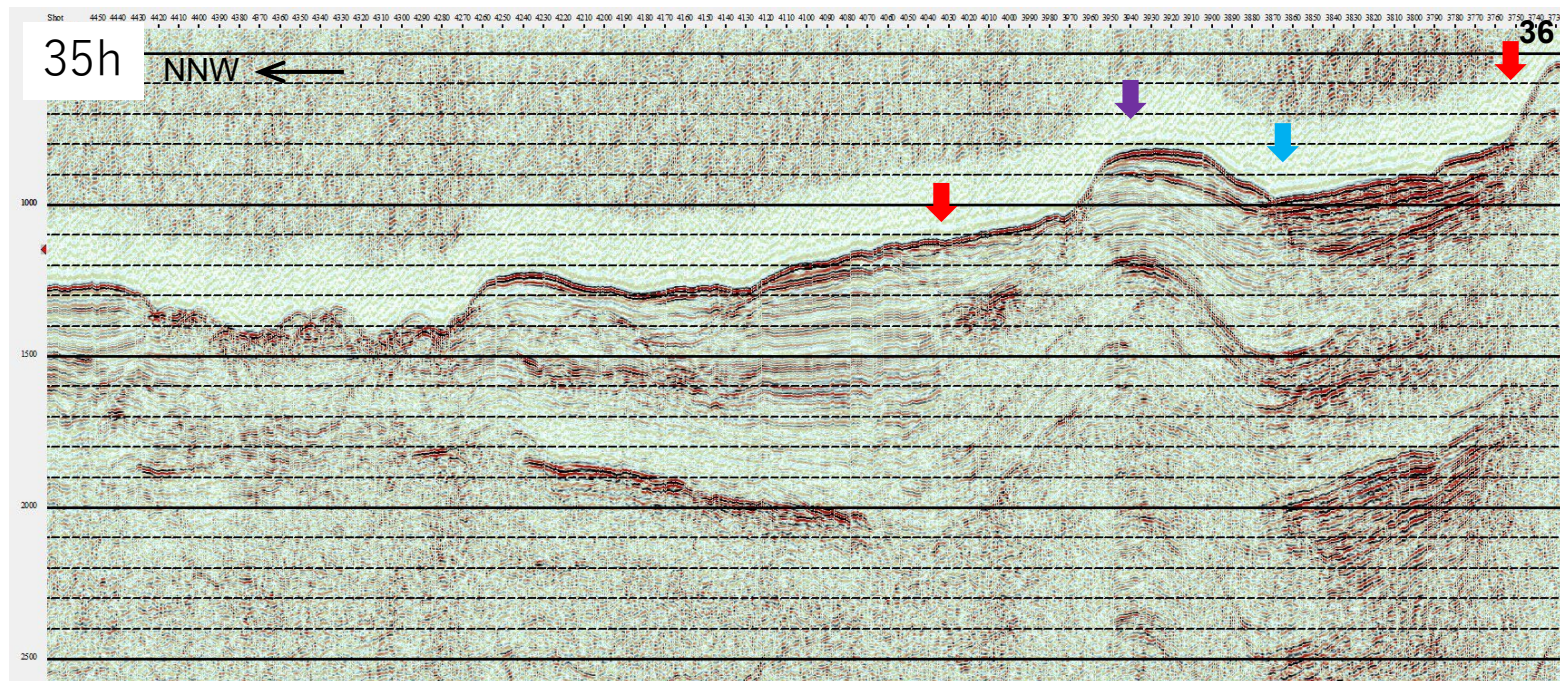
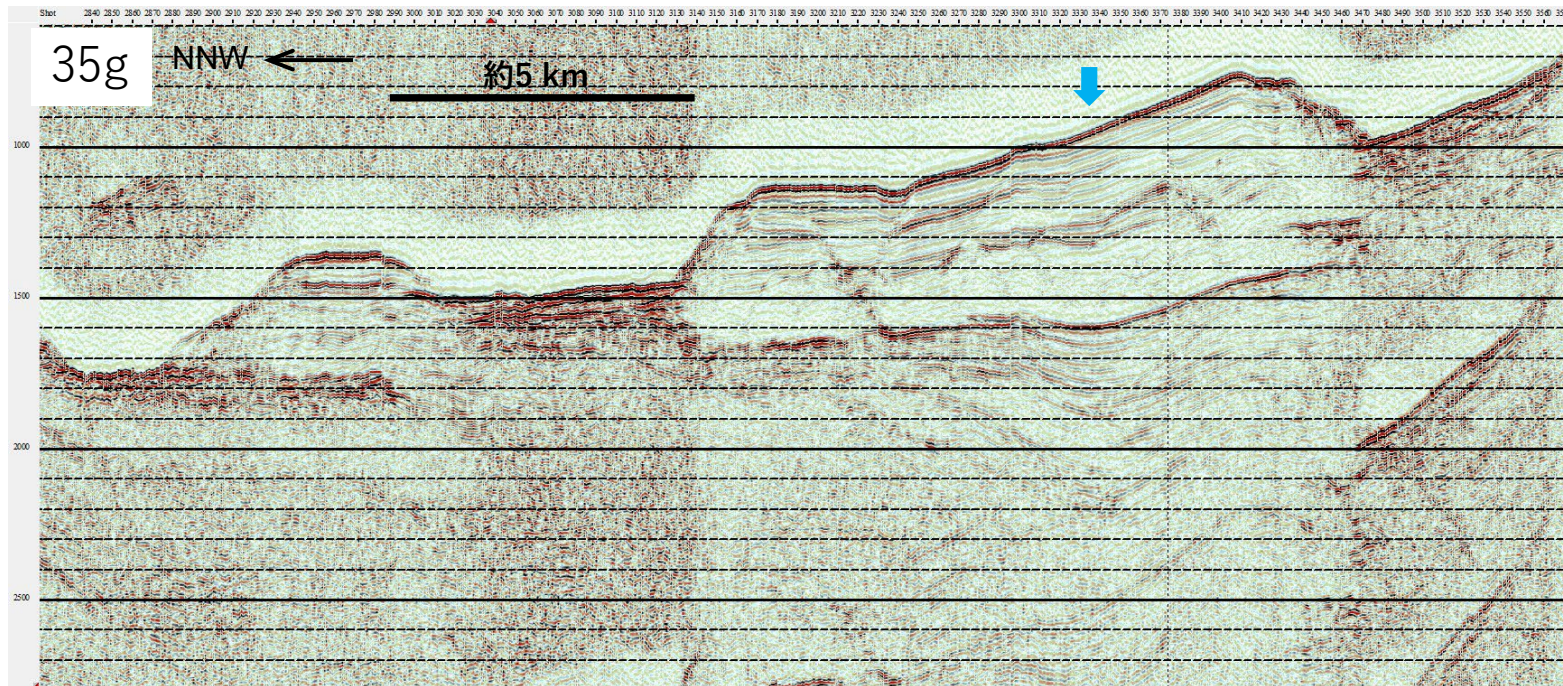
親不知沖

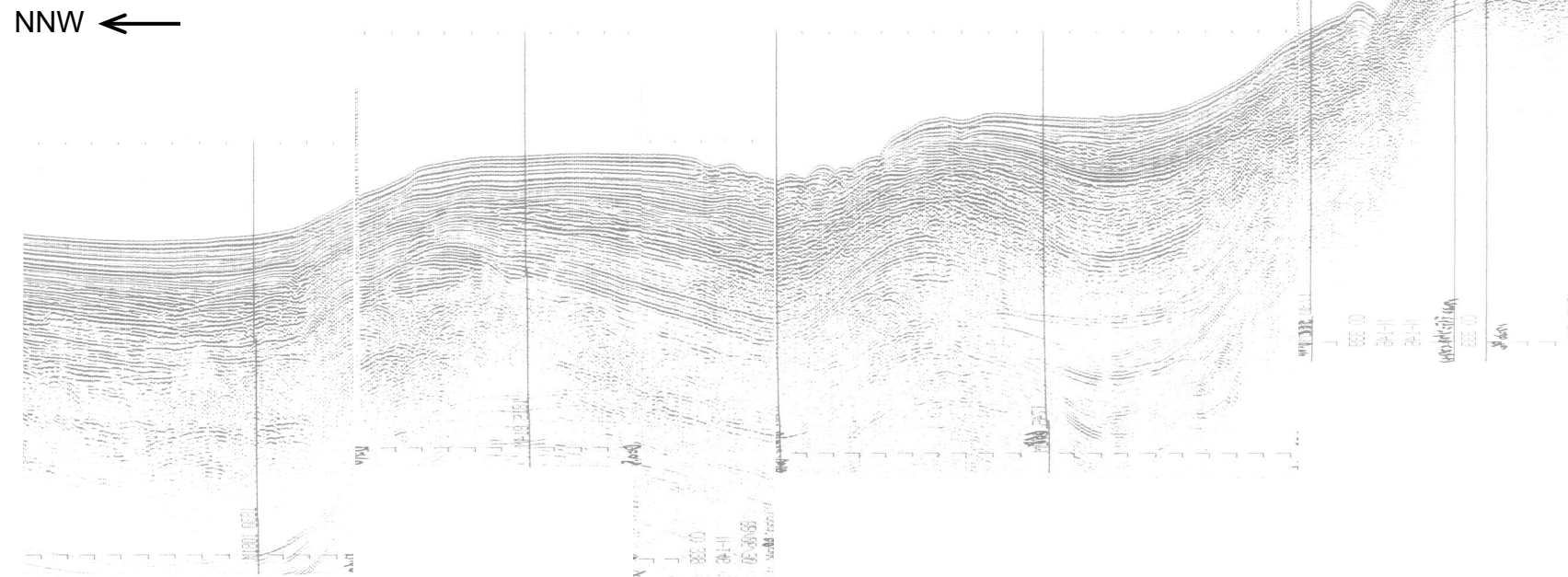
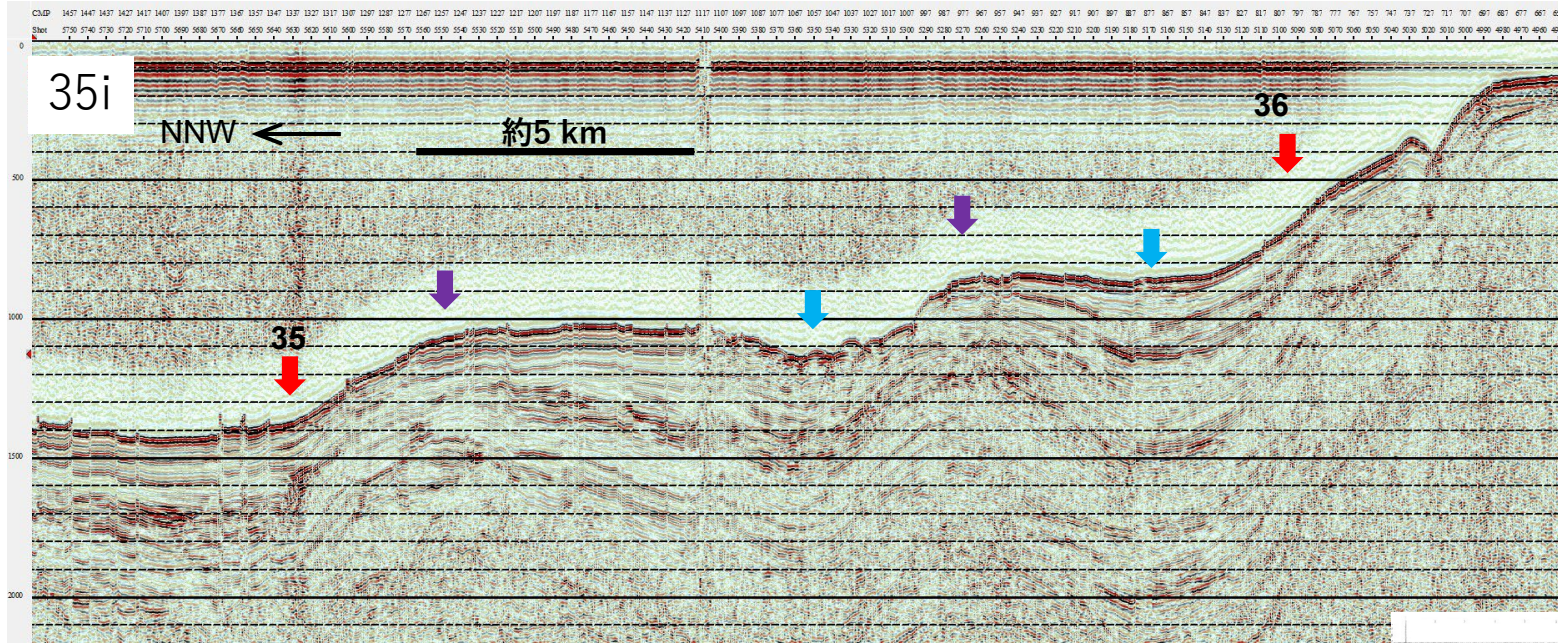


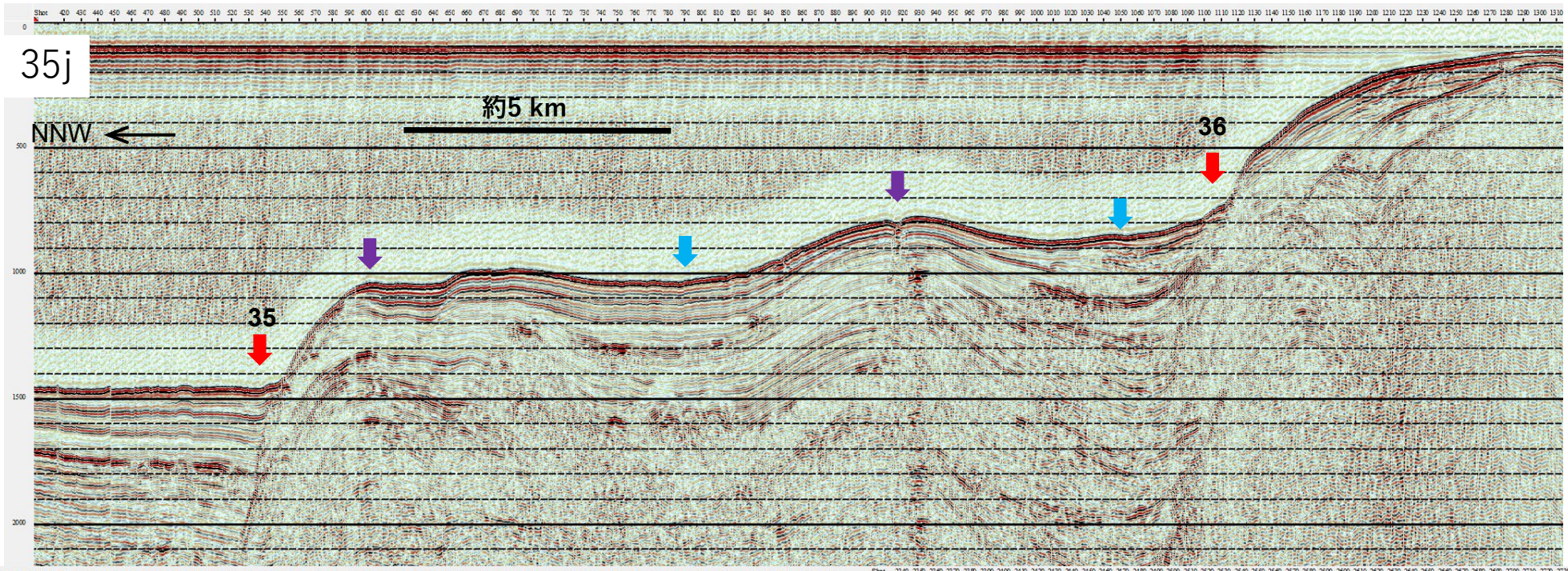
Jamison, W. R.(1987):doi : 10.1016/0191-8141(87)90026-5 の図1
参照



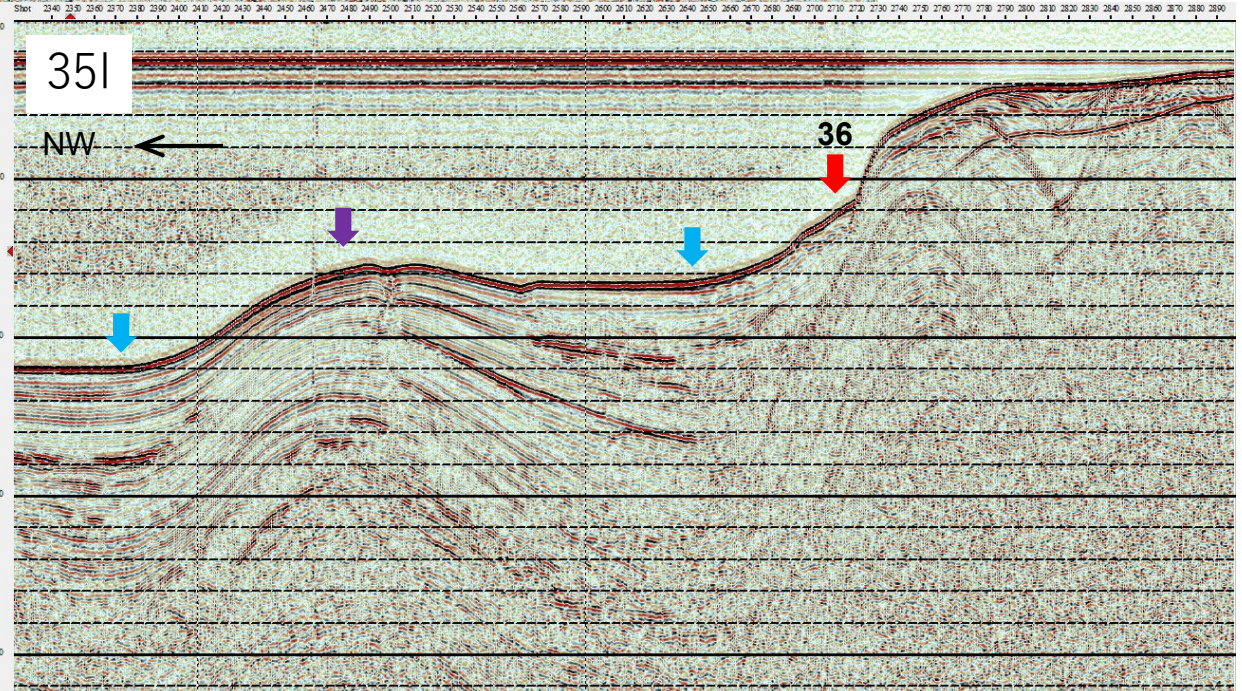
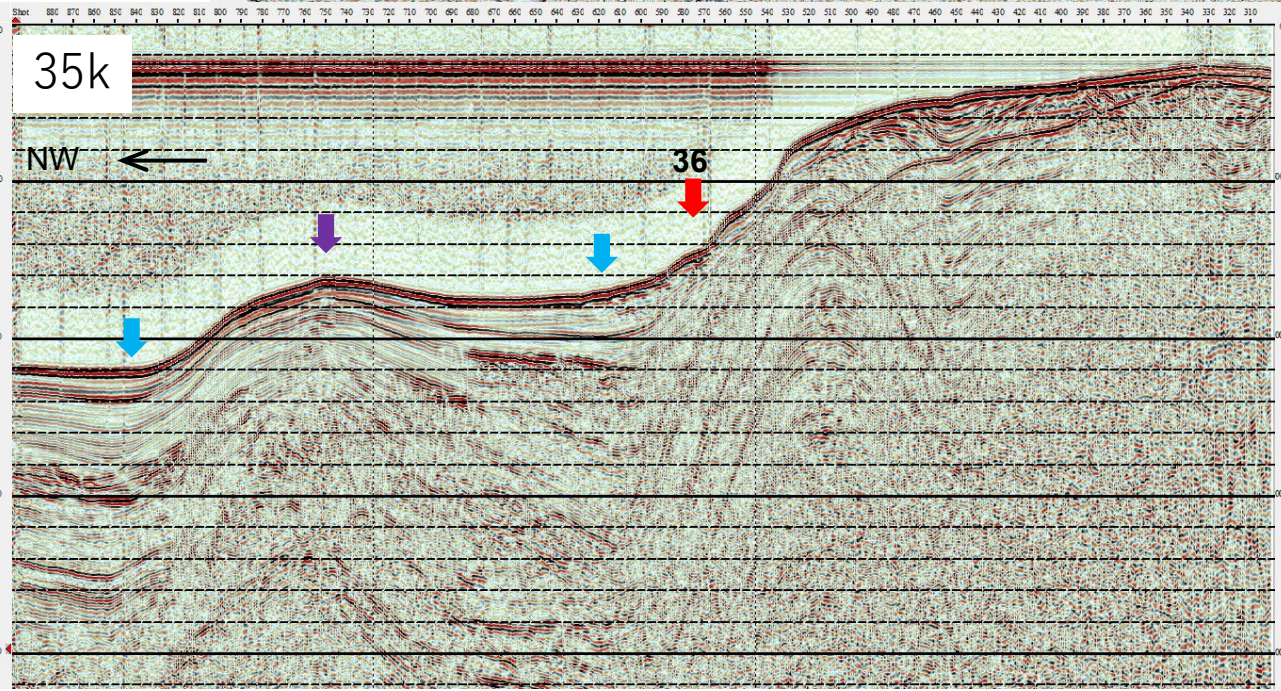


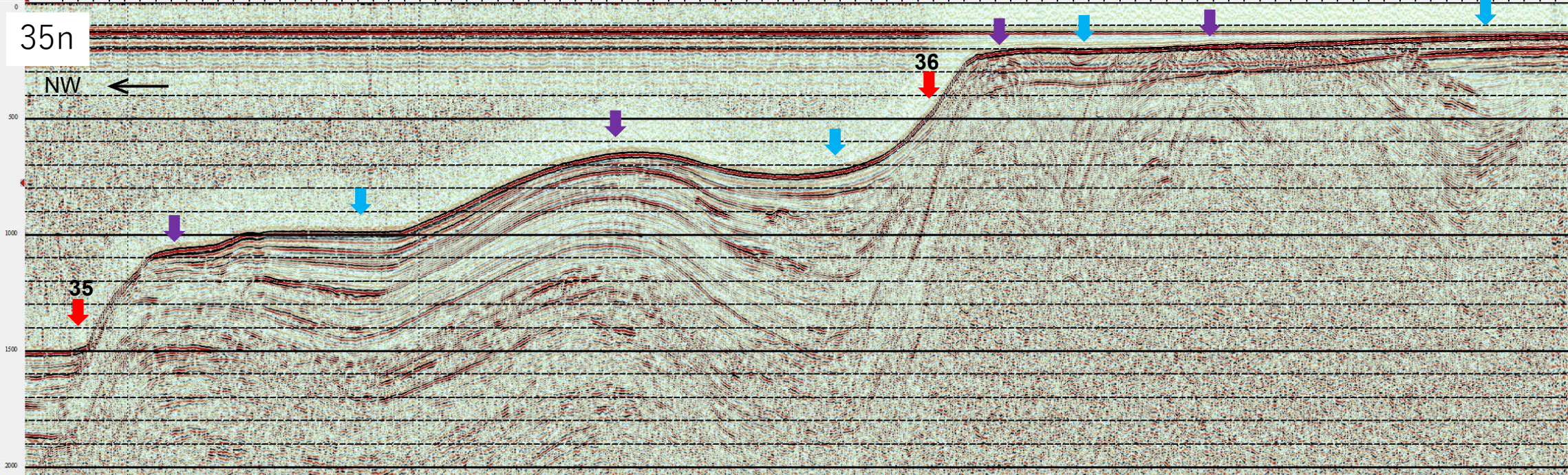
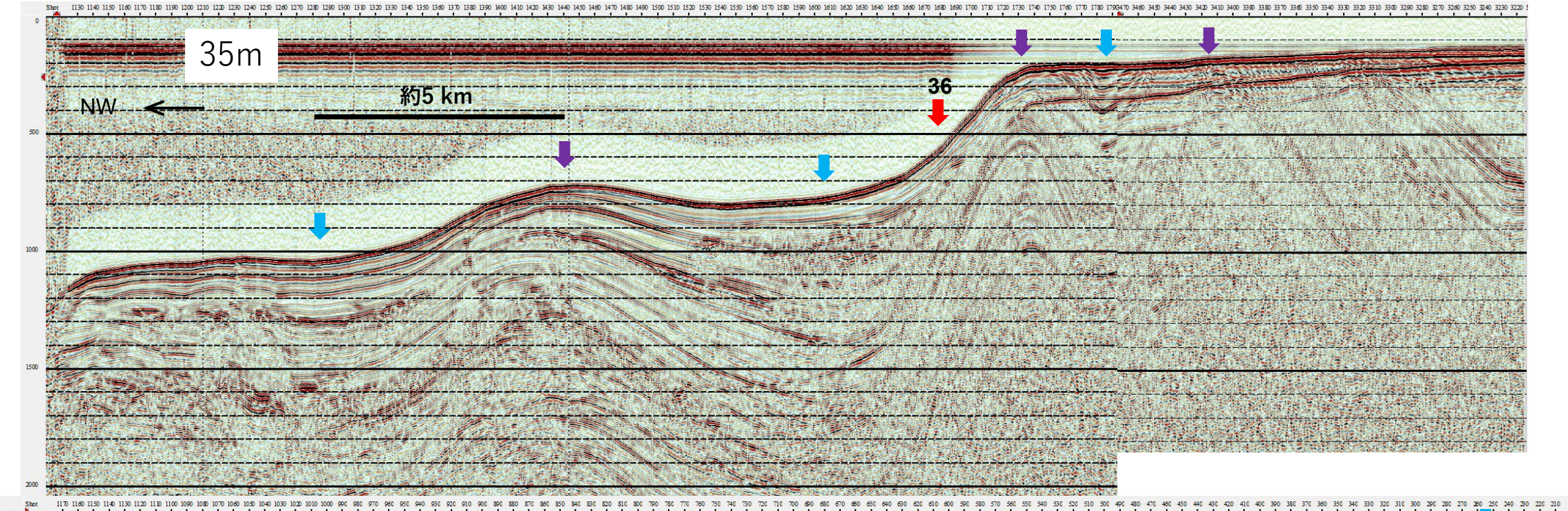




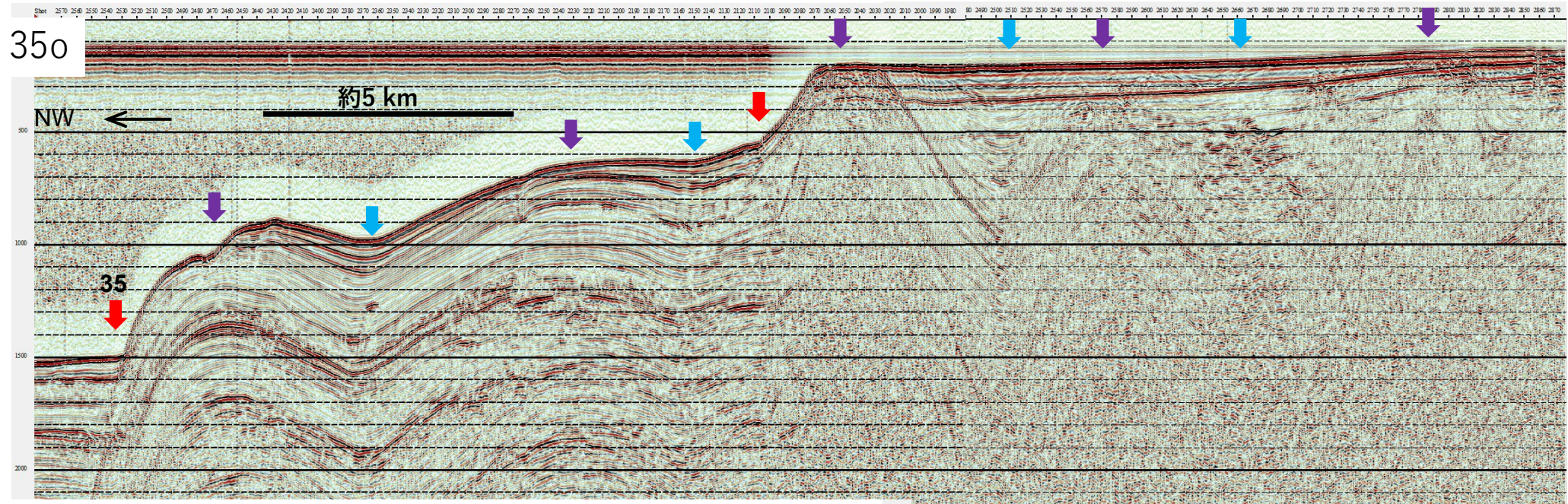


8

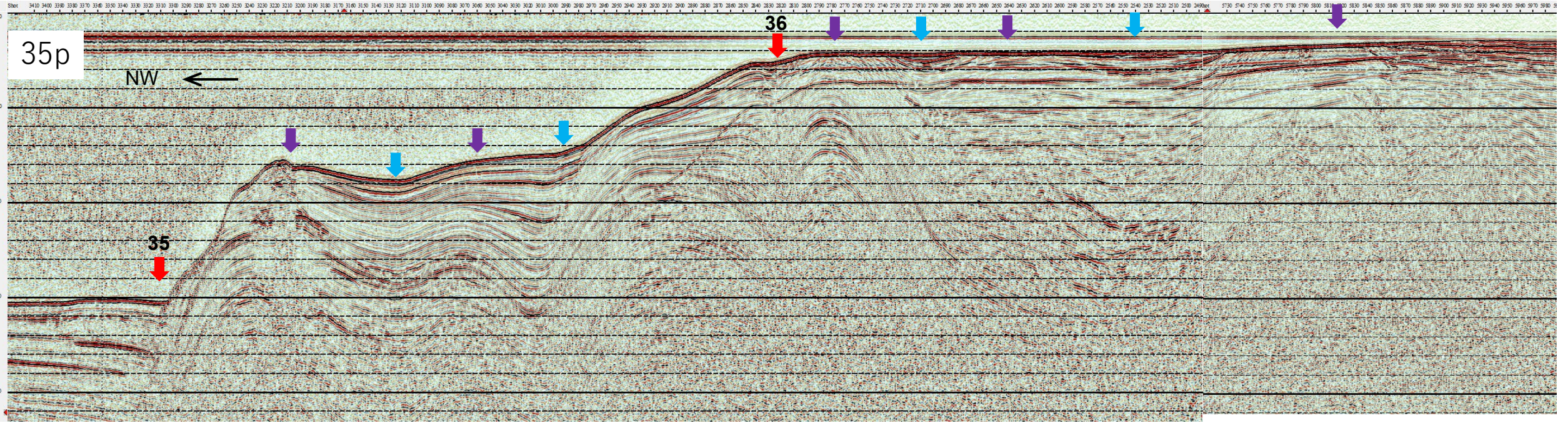


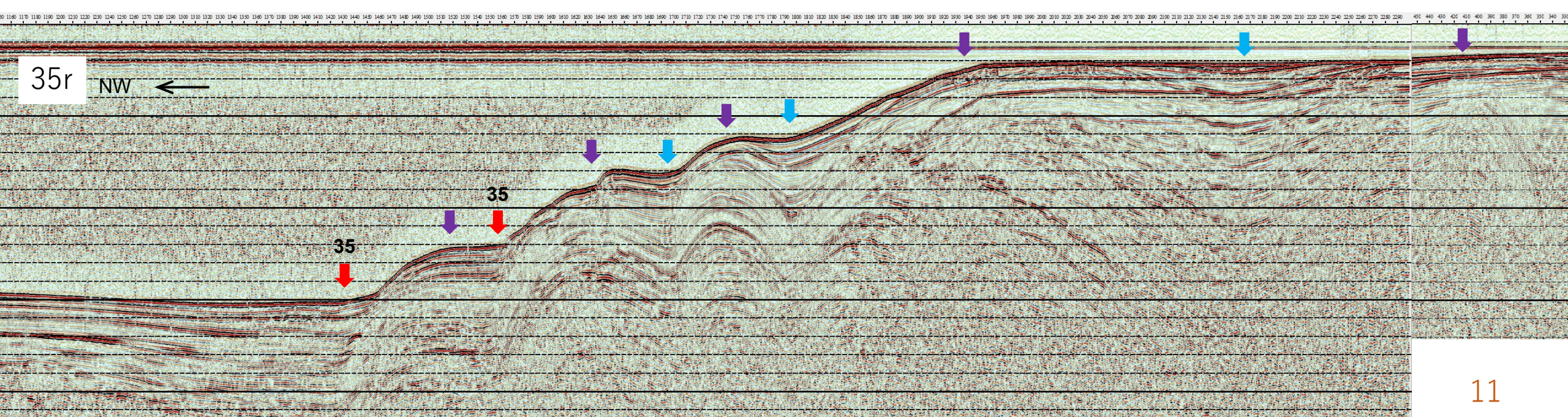
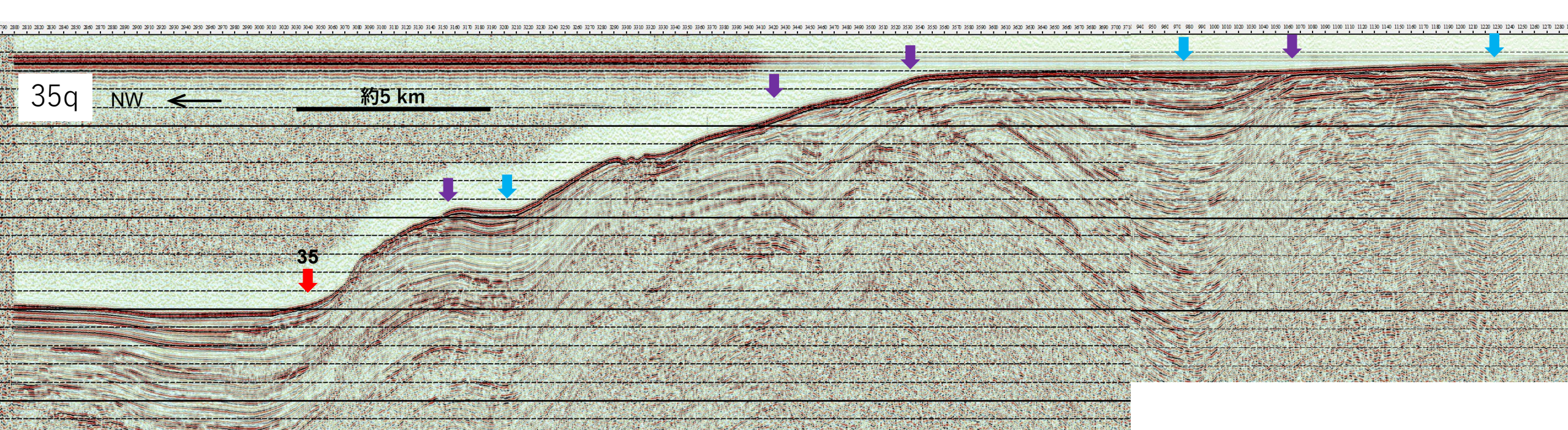


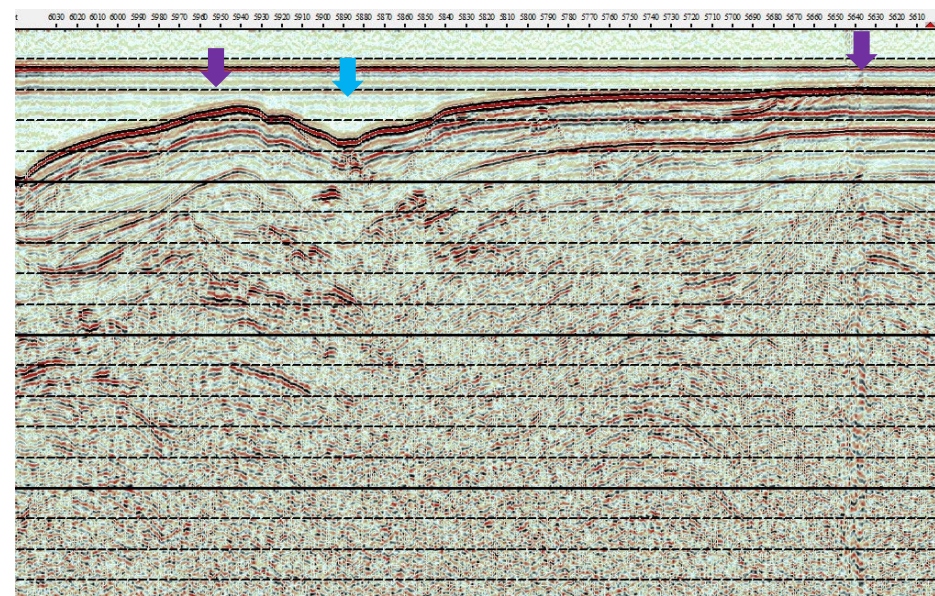
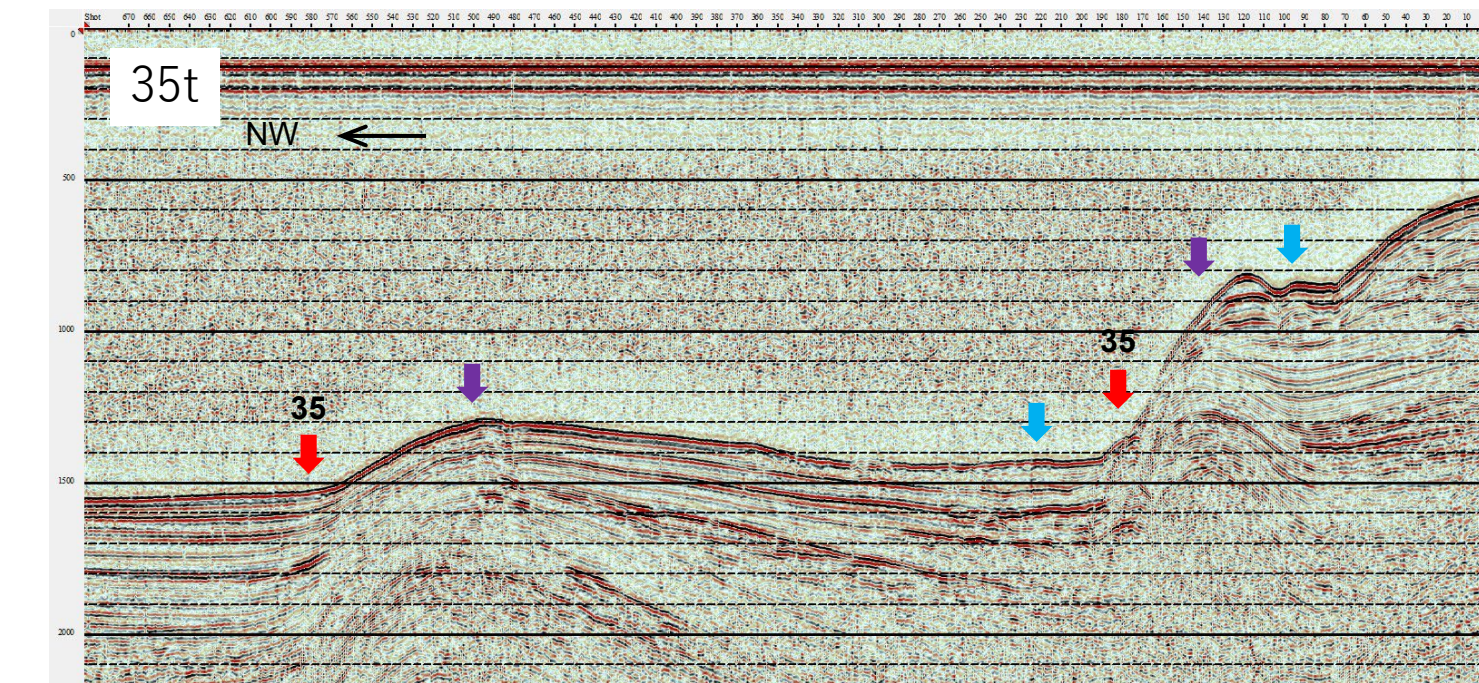
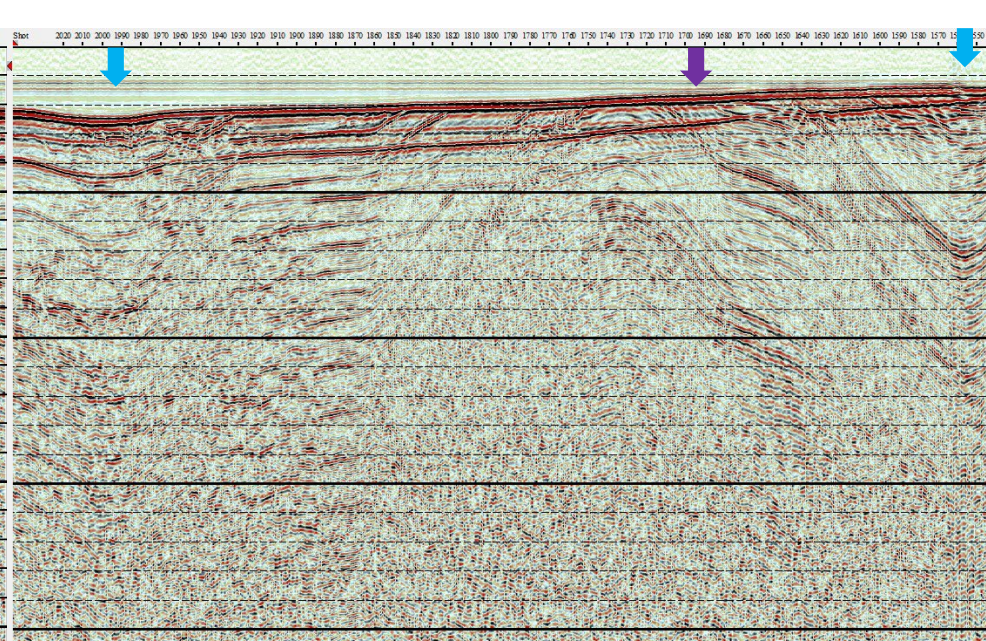
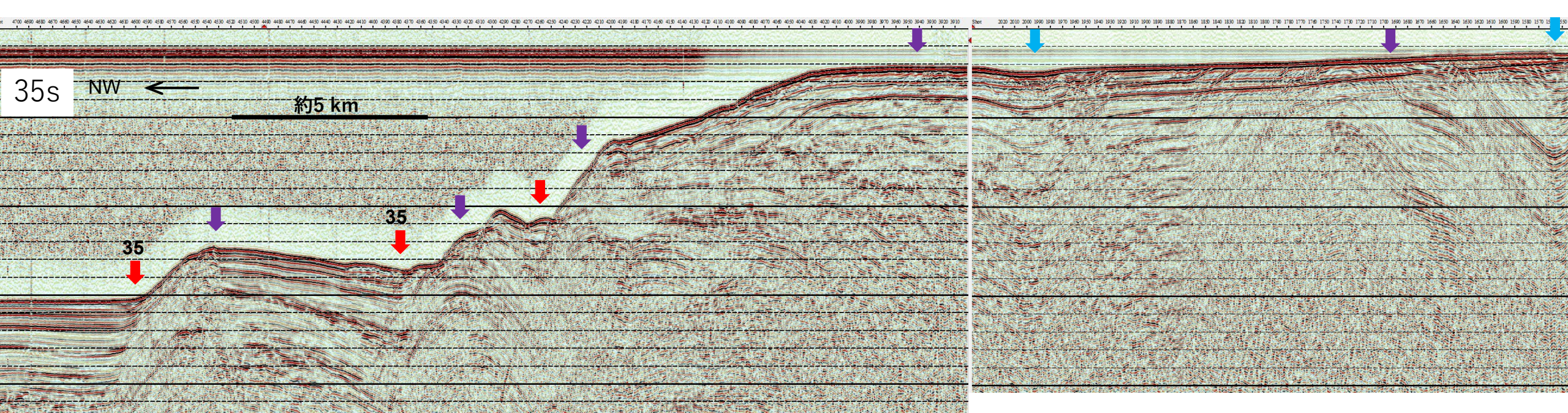
35o



35p



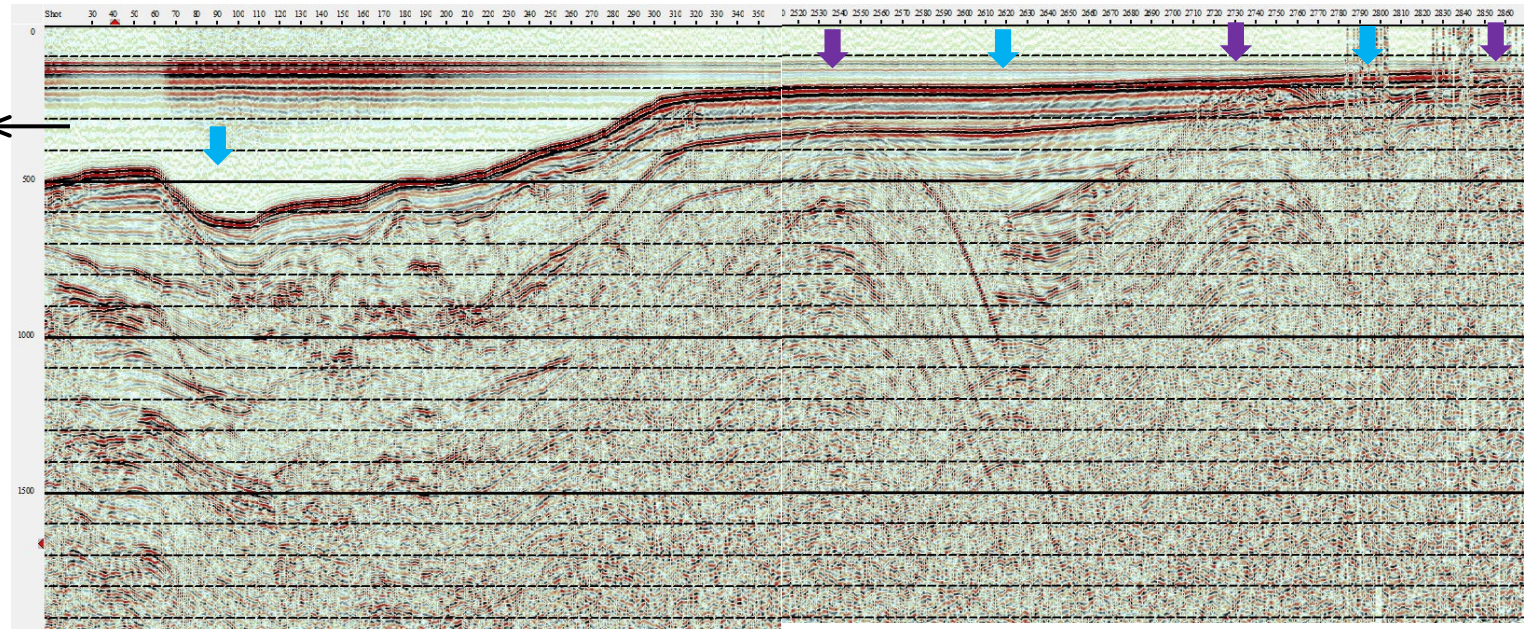




35u

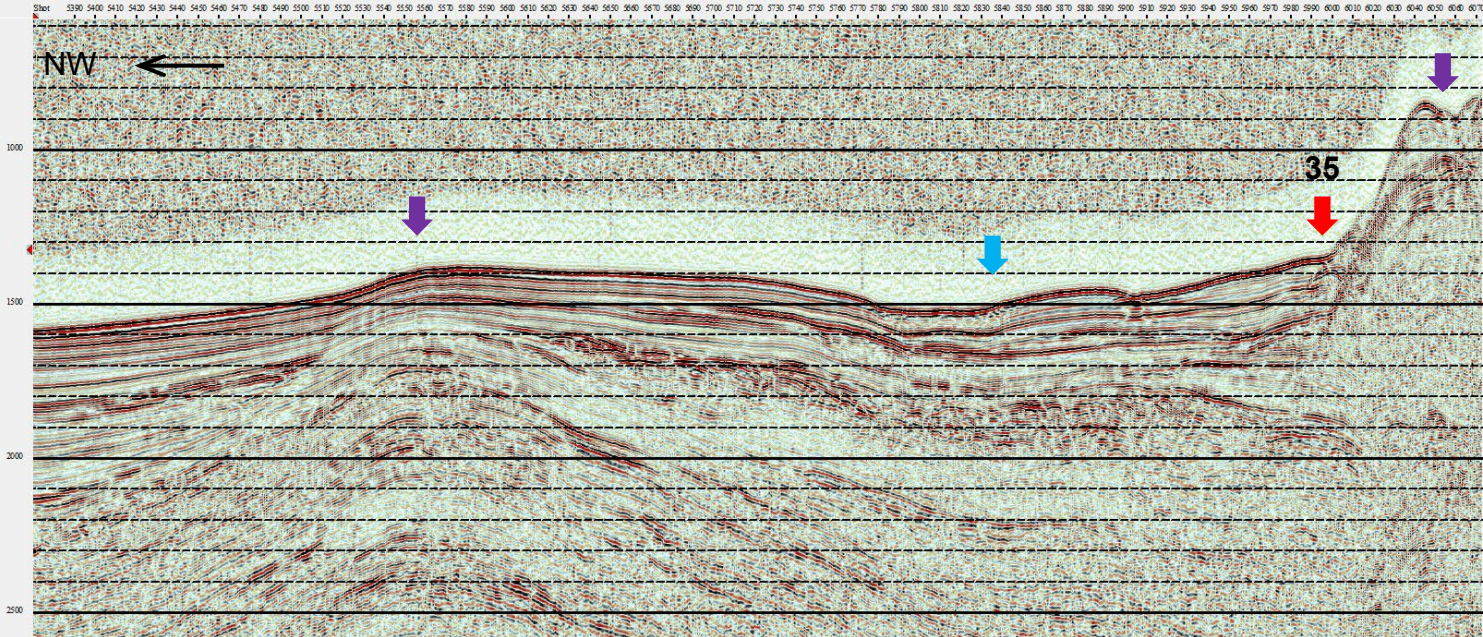
NW ←

約5 km

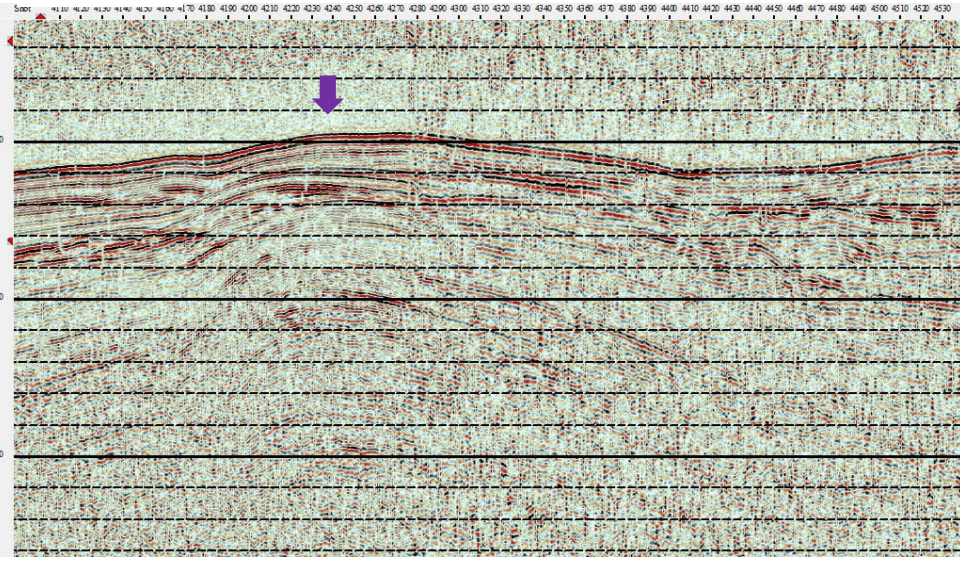


NW ←

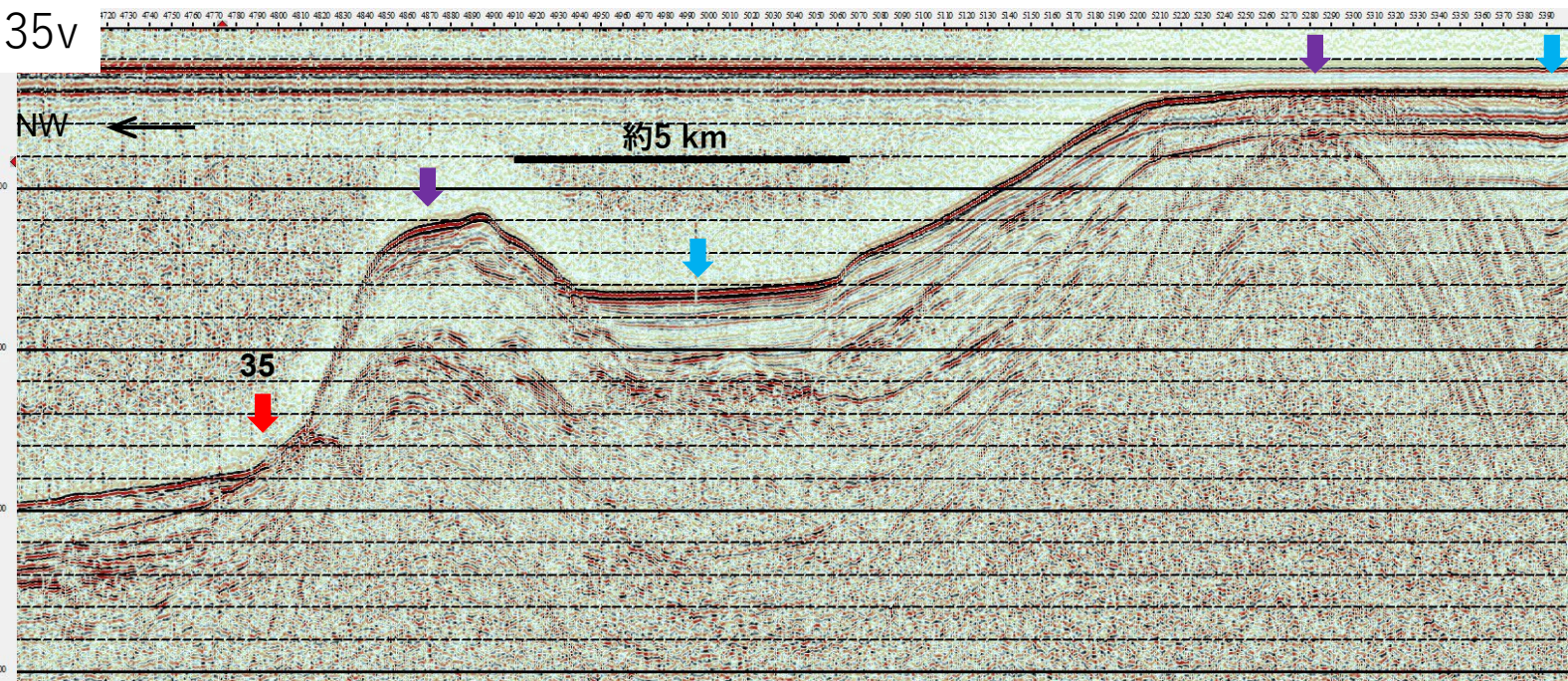
35



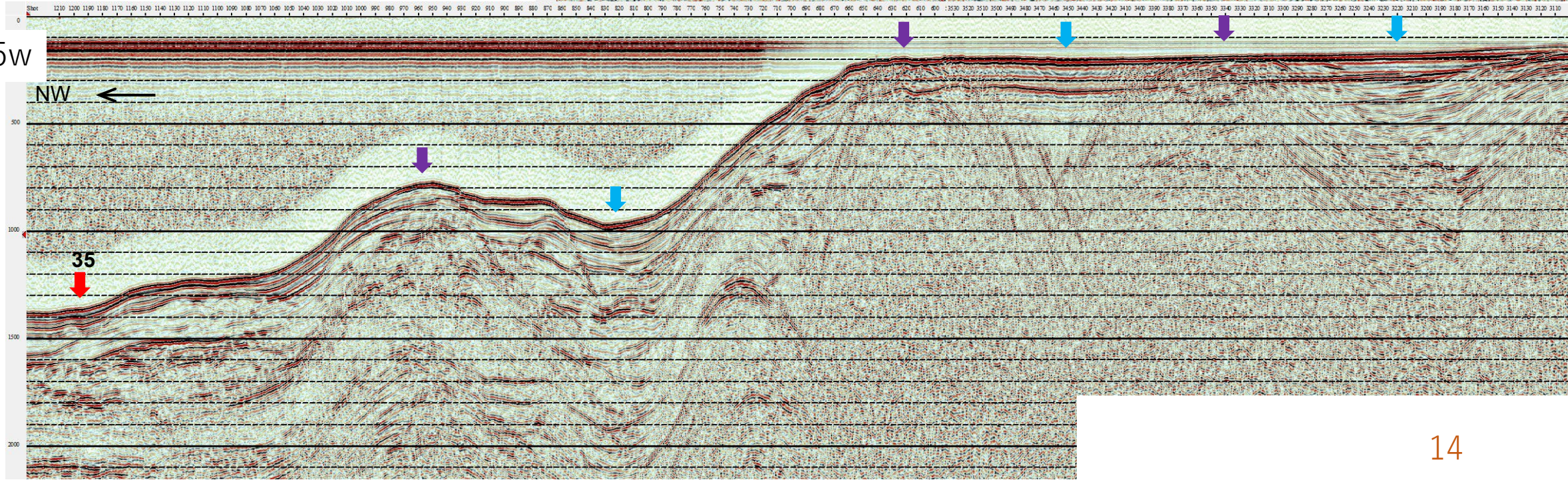
35v-n

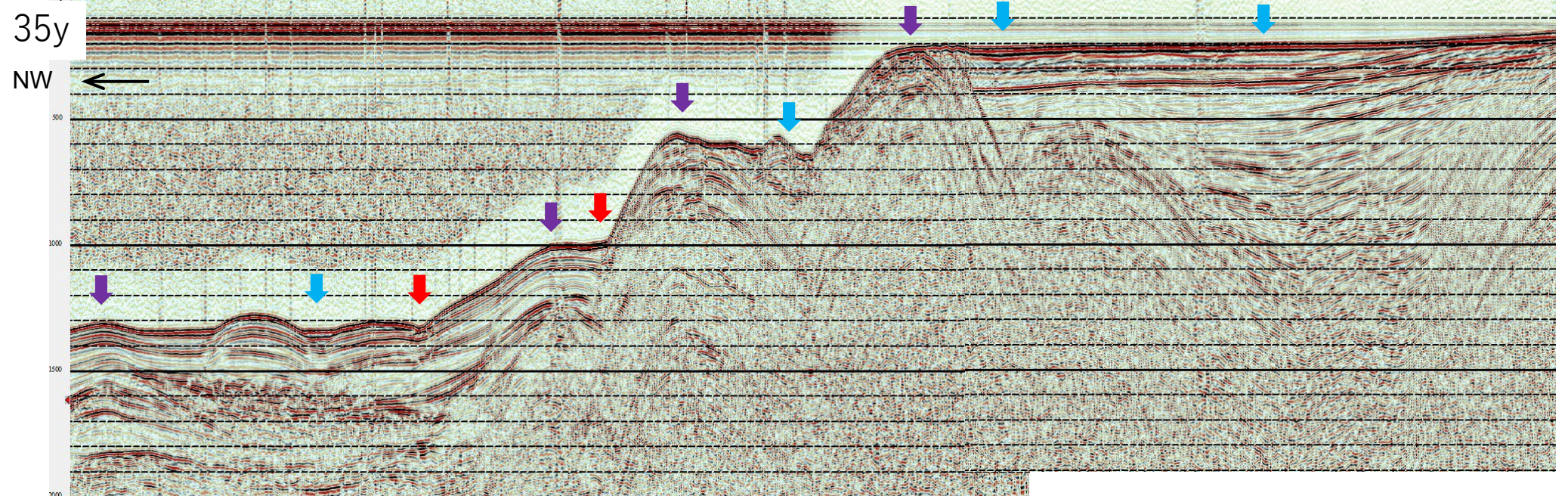
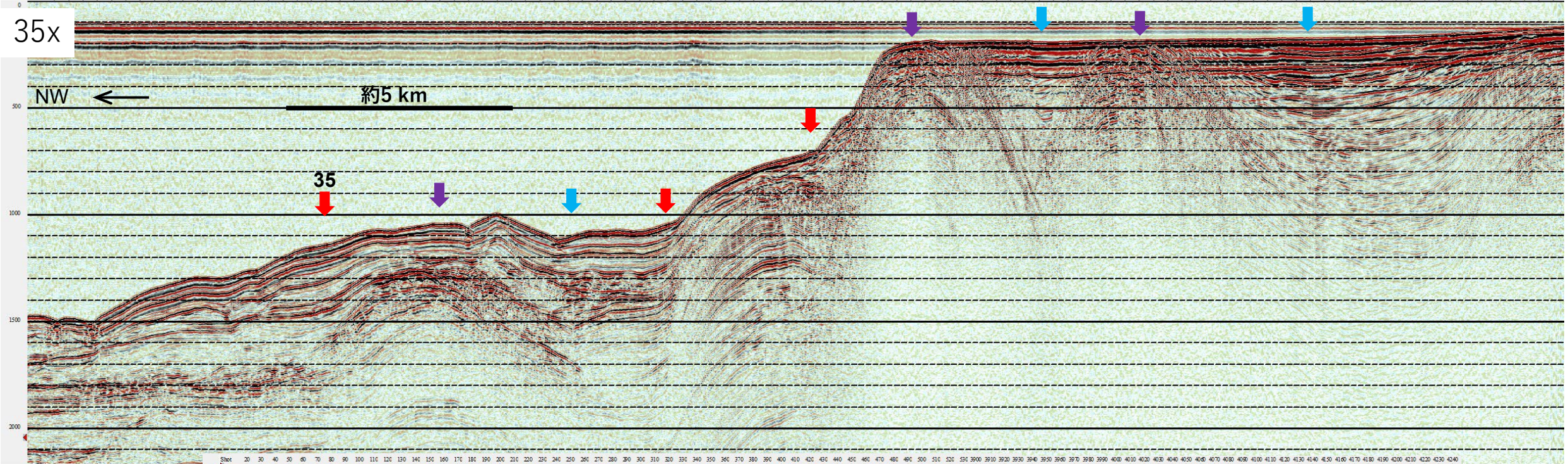


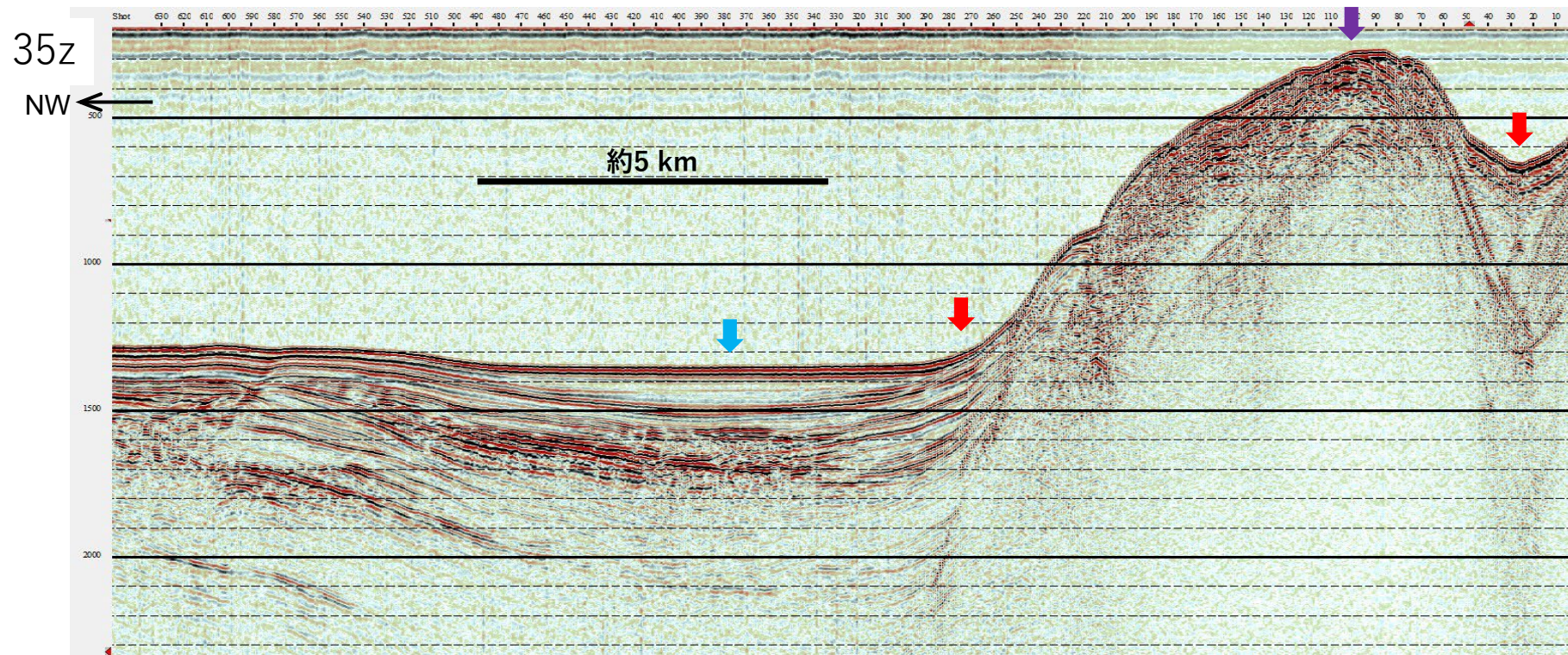
35v



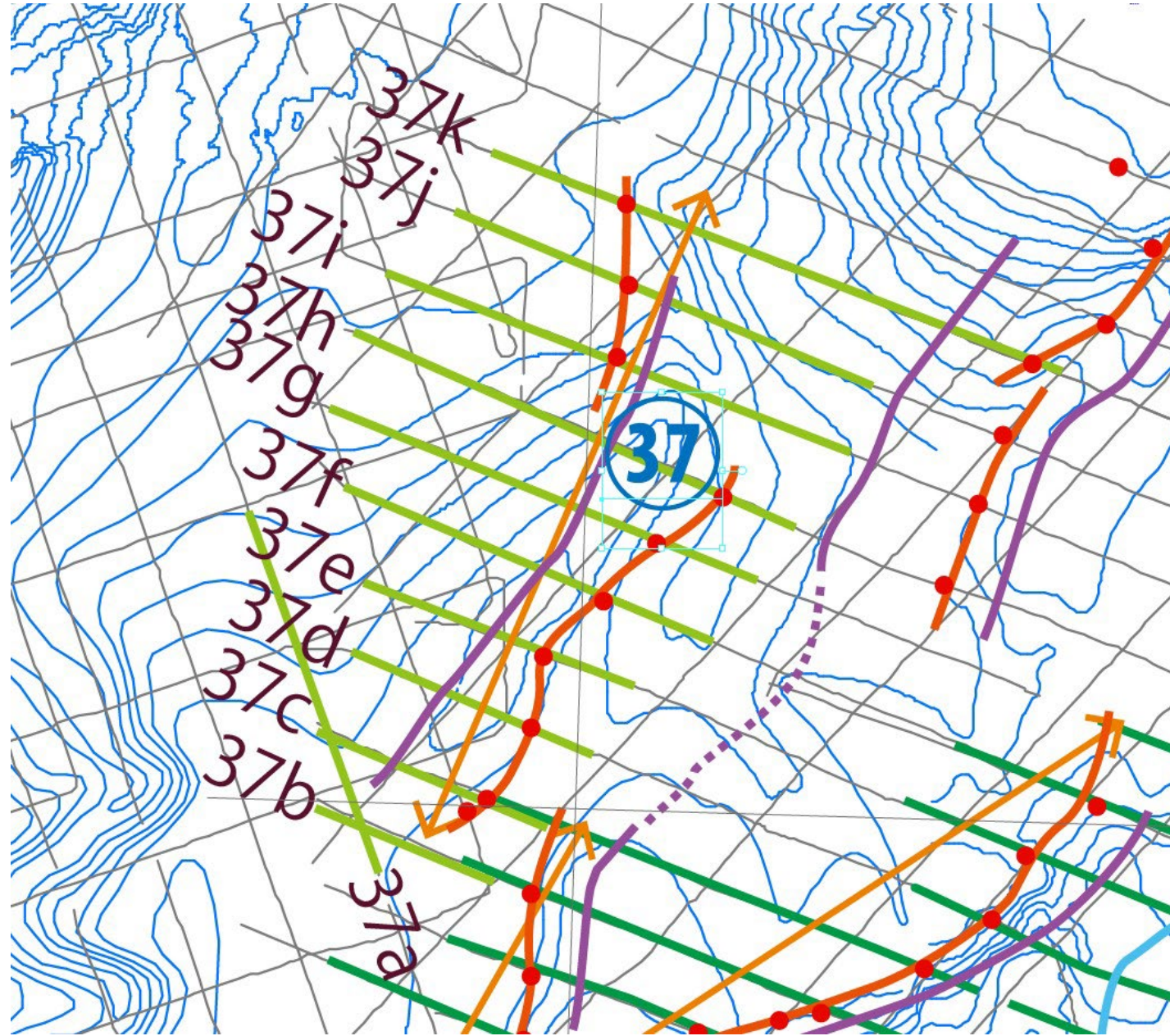
35w

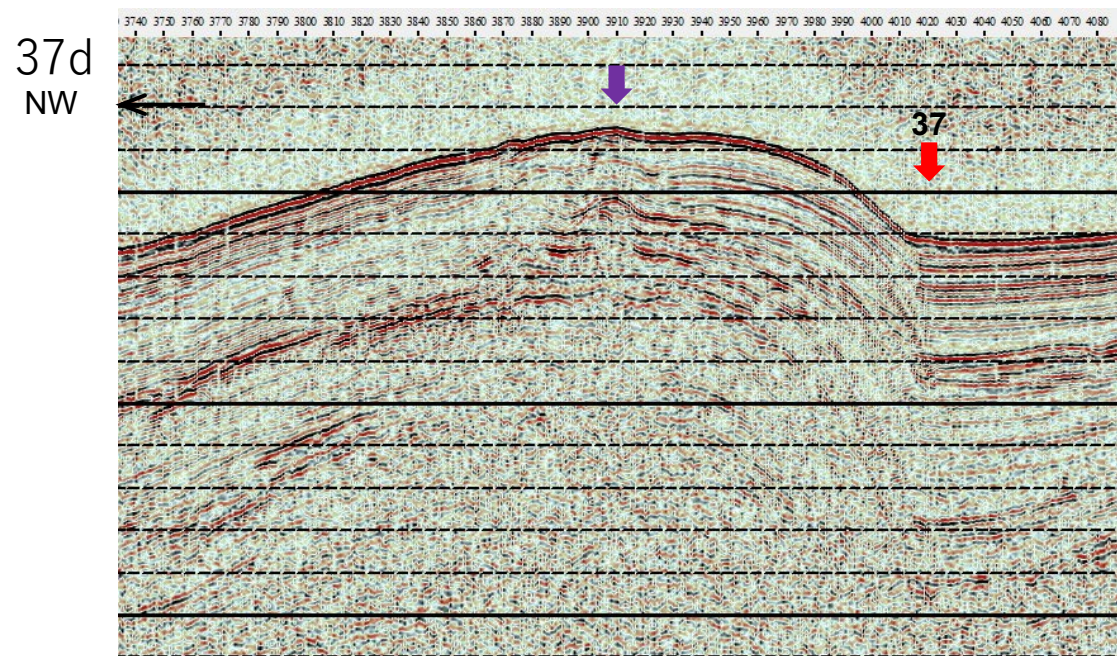
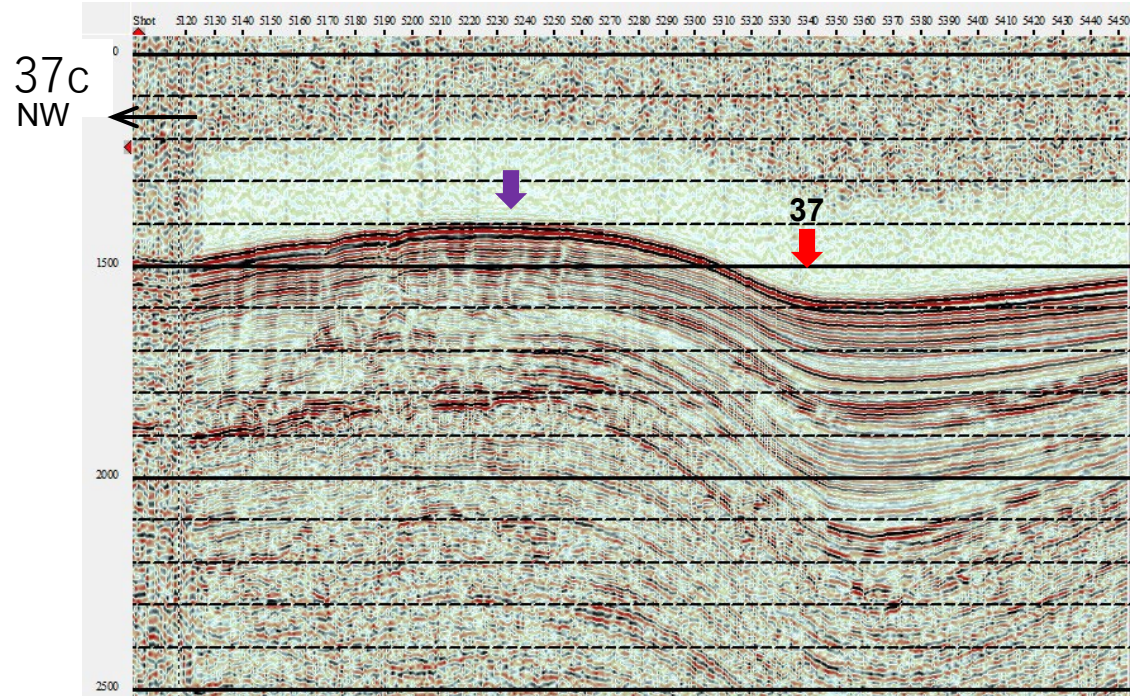
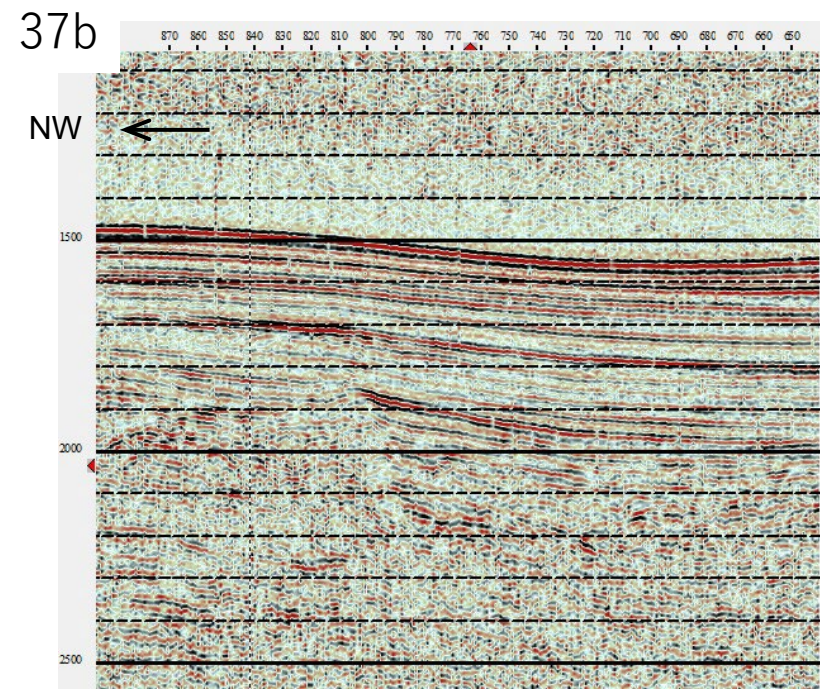
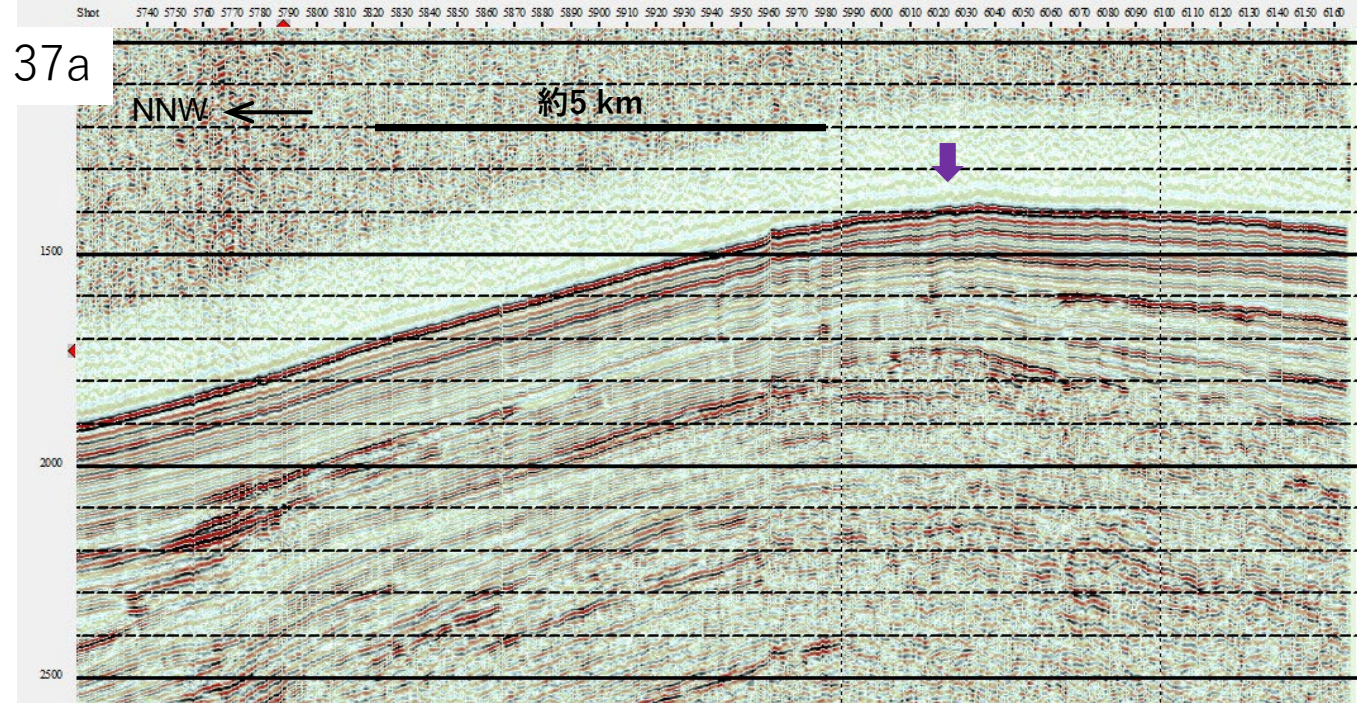


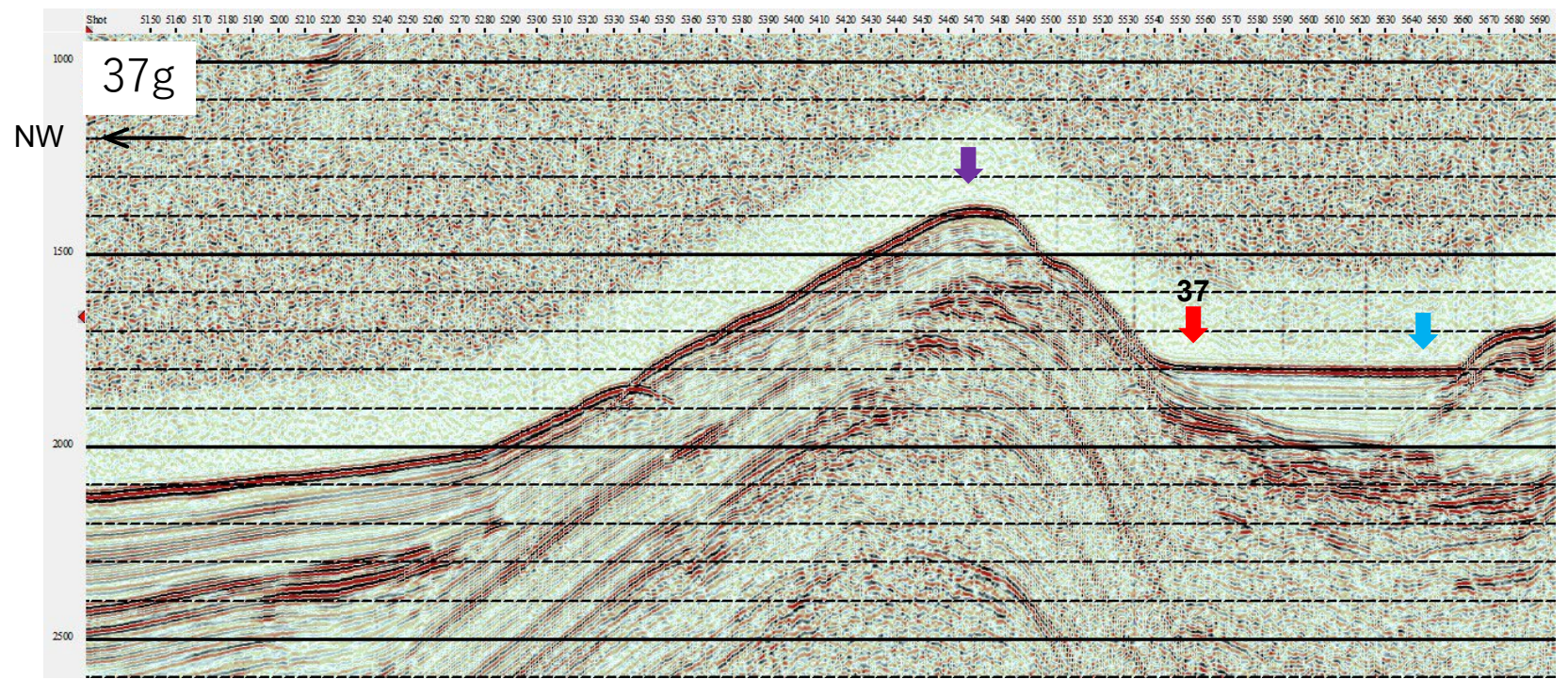
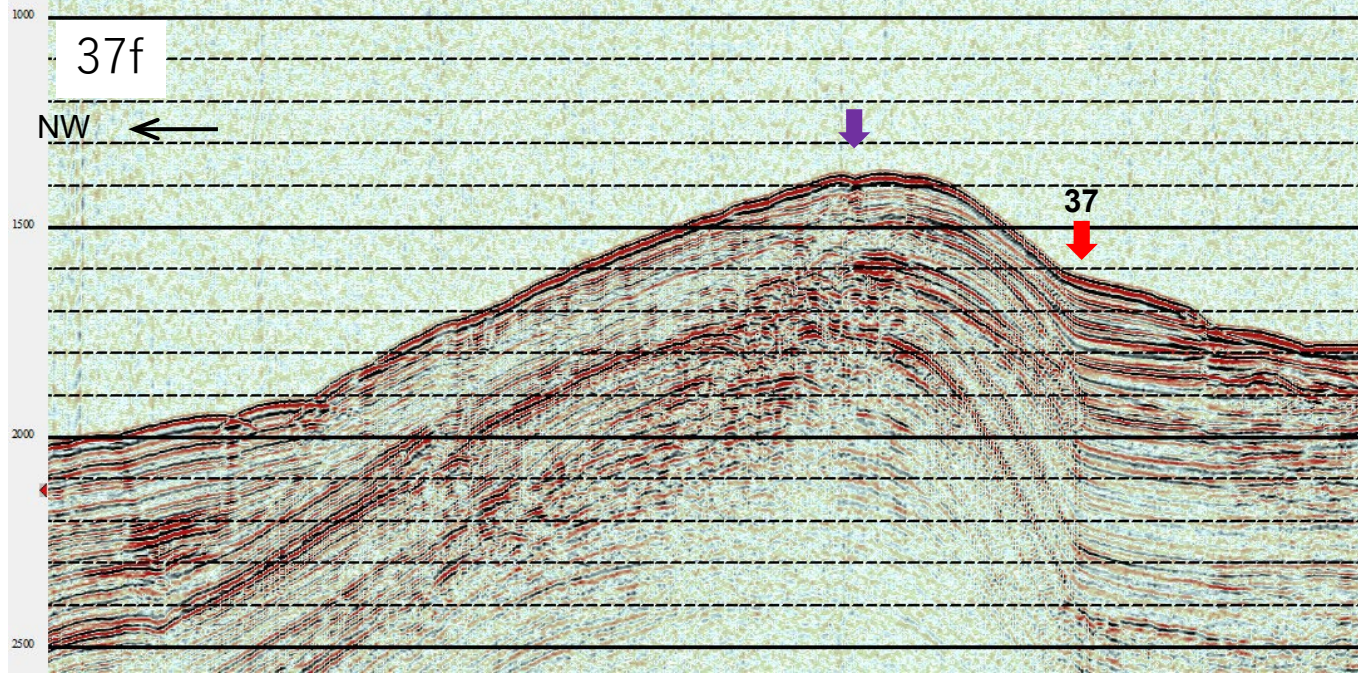
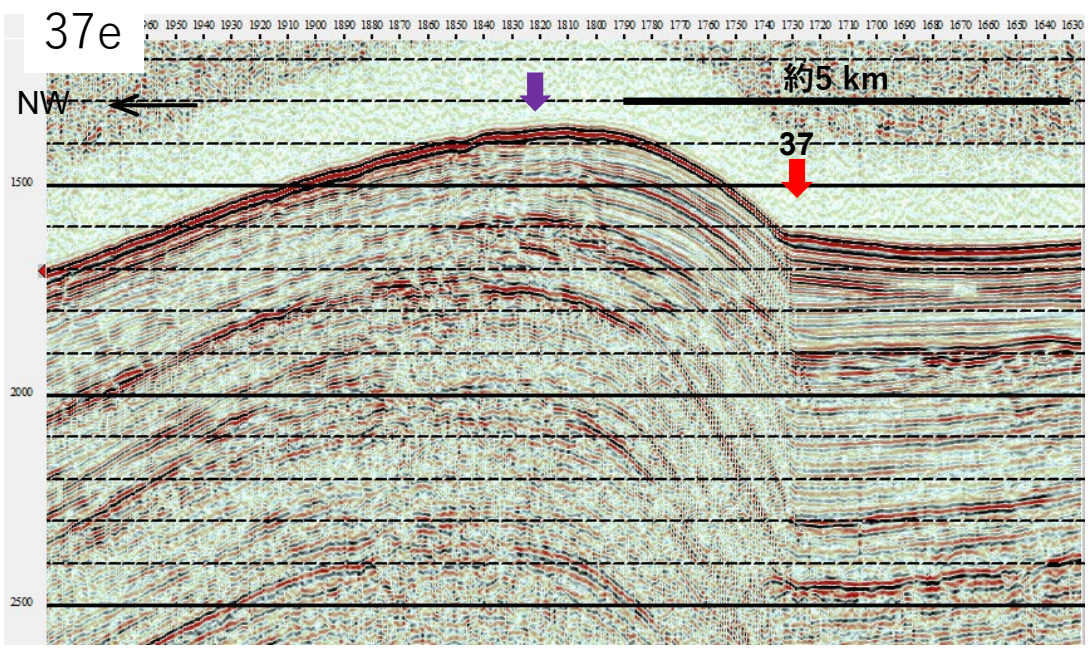


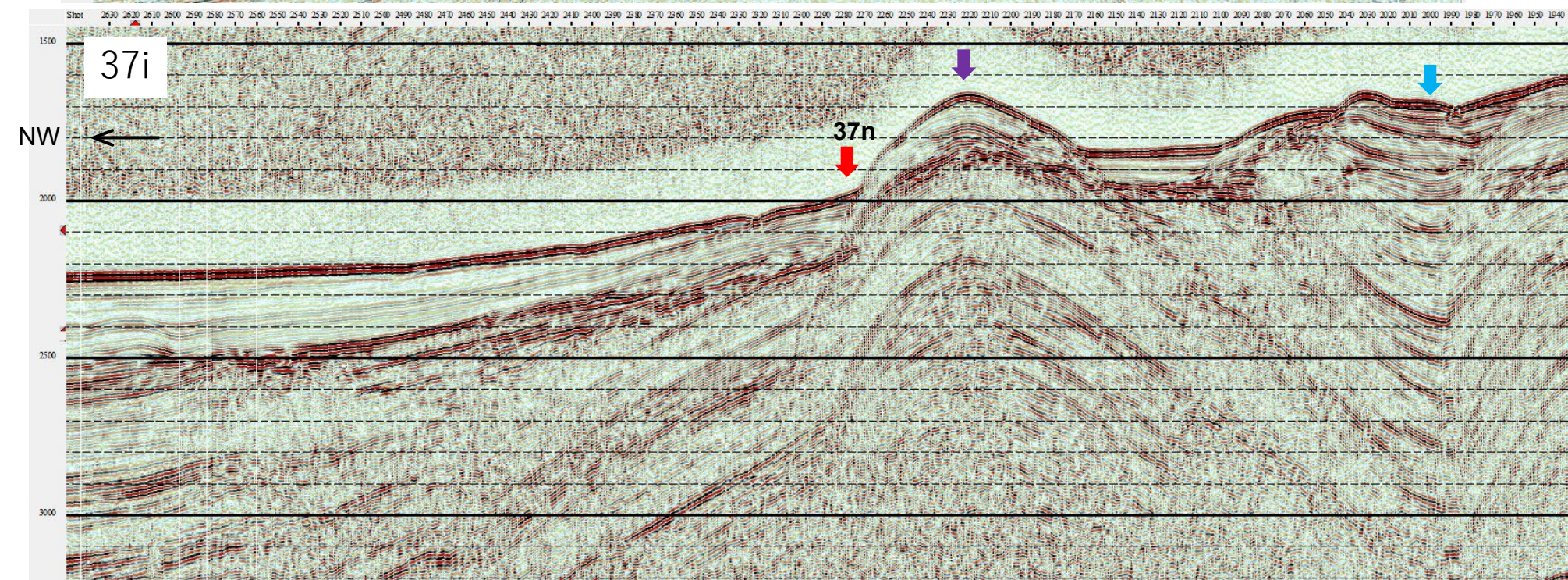
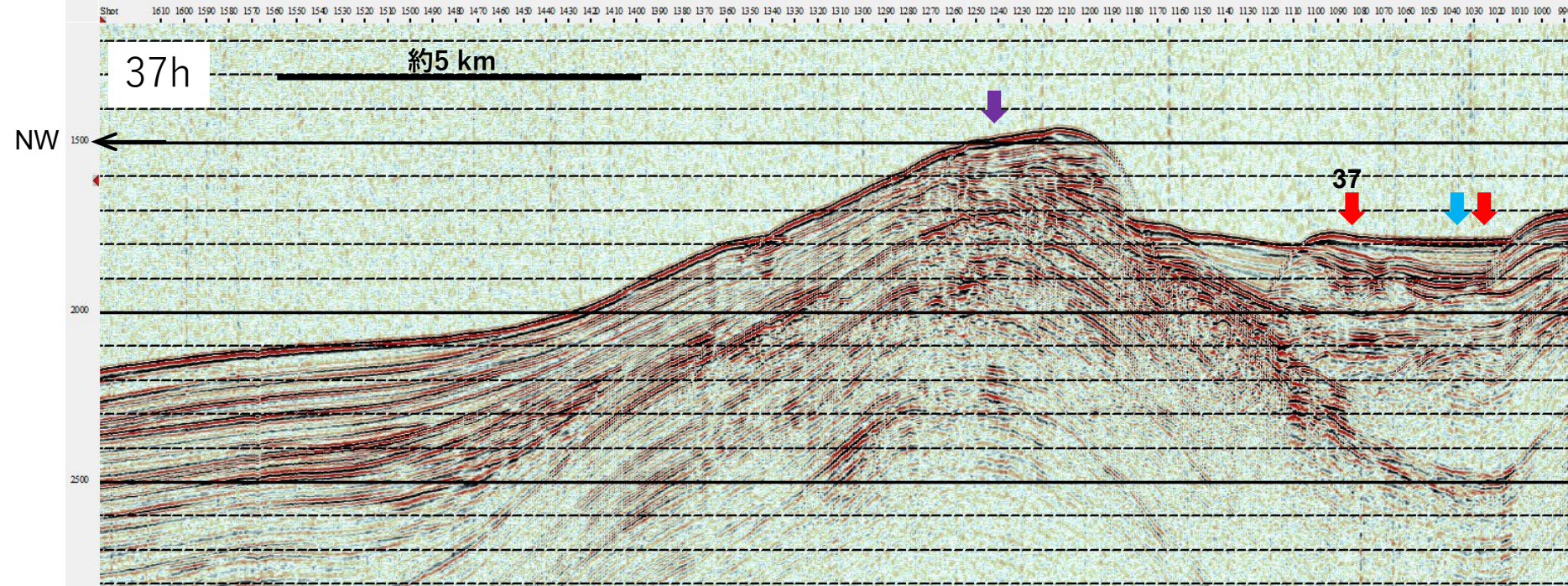


上越海丘



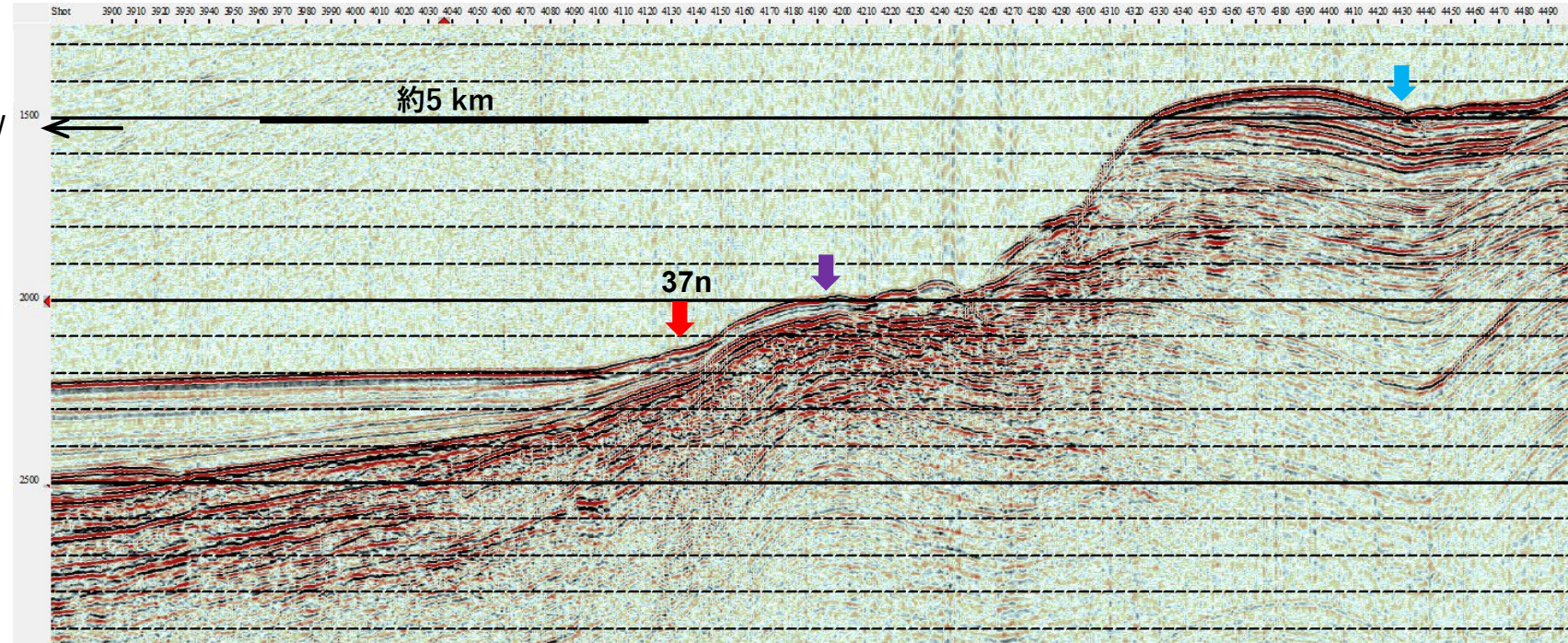






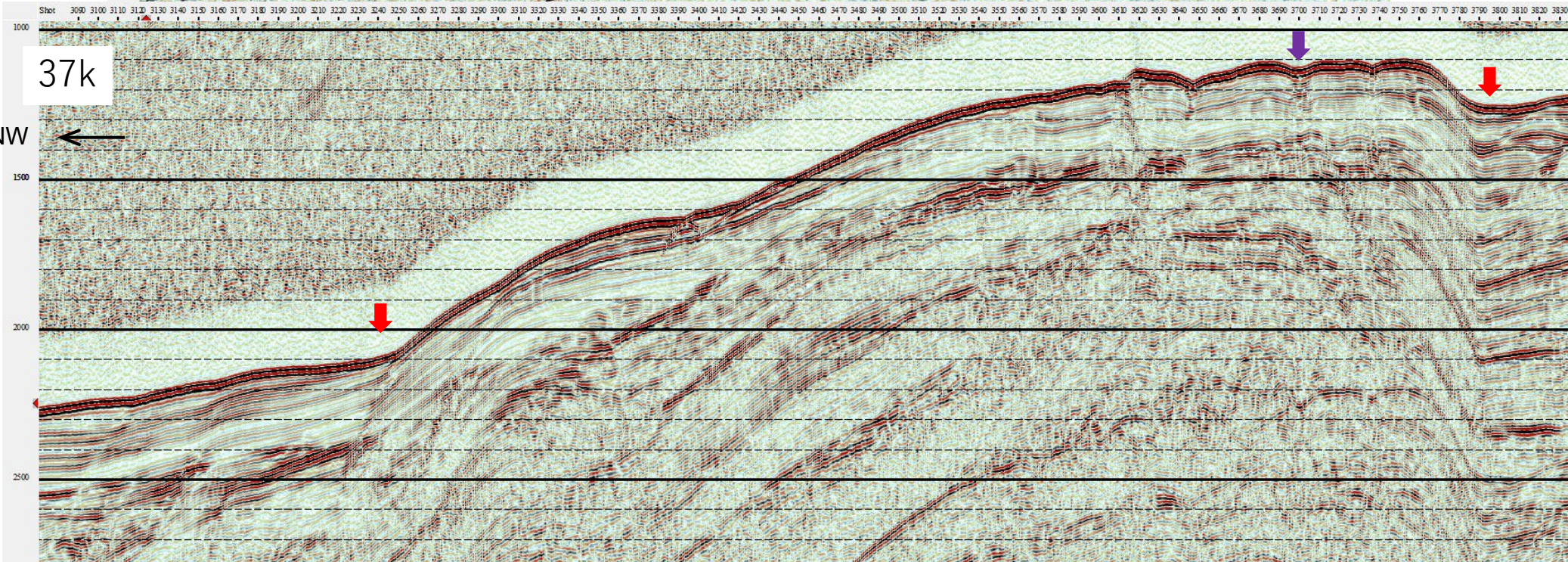
37j

NW ←



37k

NW ←



参考

Jamison, W. R. (1987) : Geometric analysis of fold development in overthrust terranes.
Journal of Structural Geology, 9, 207-219.