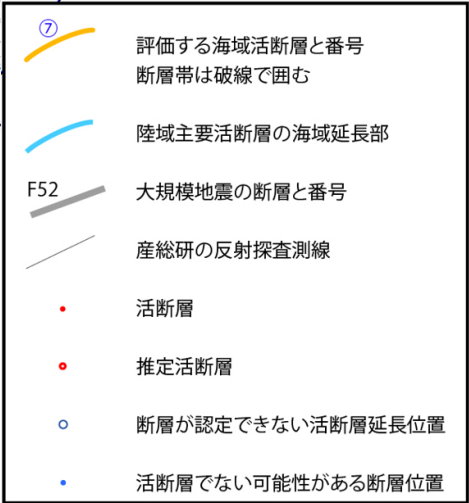
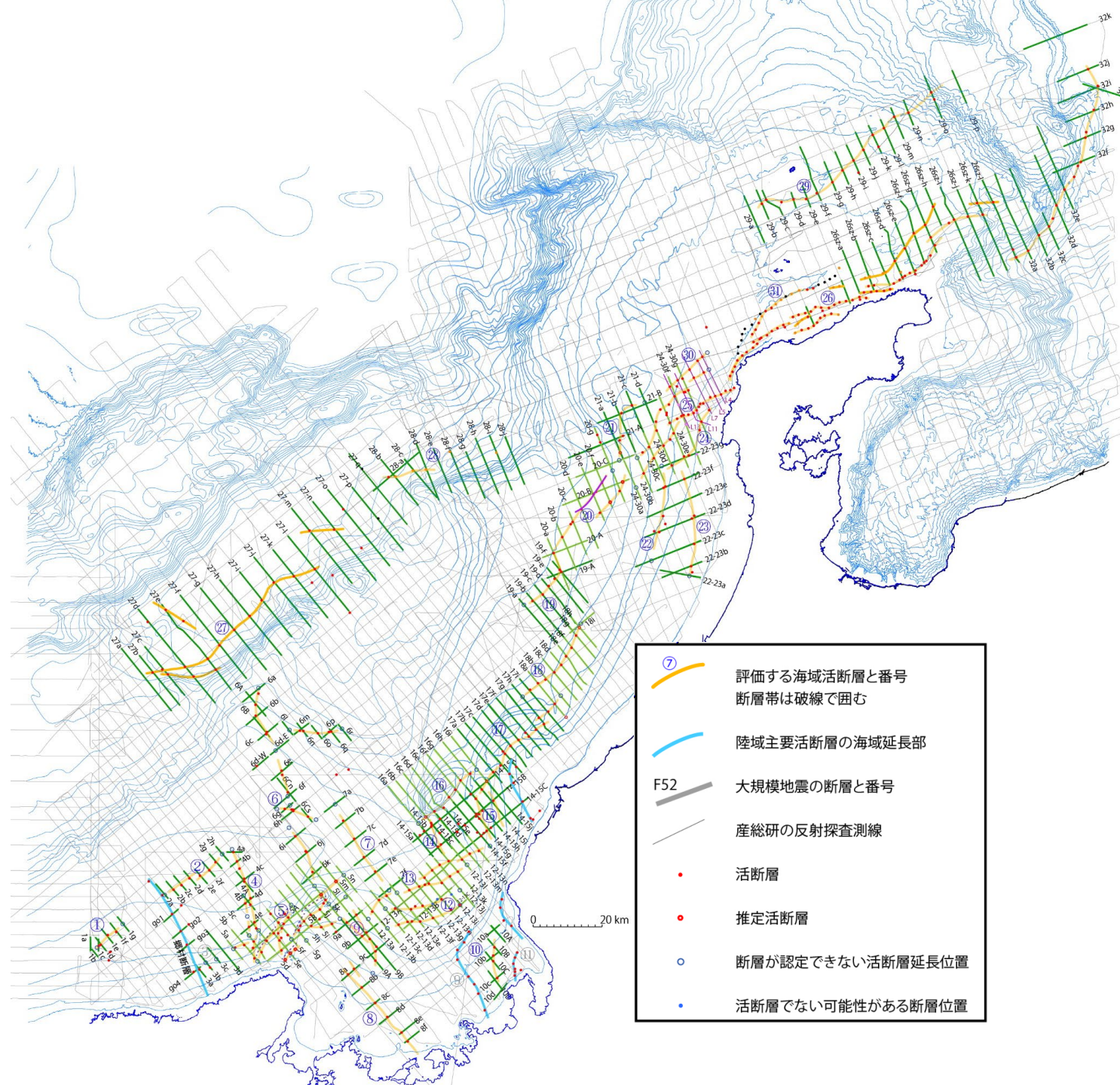


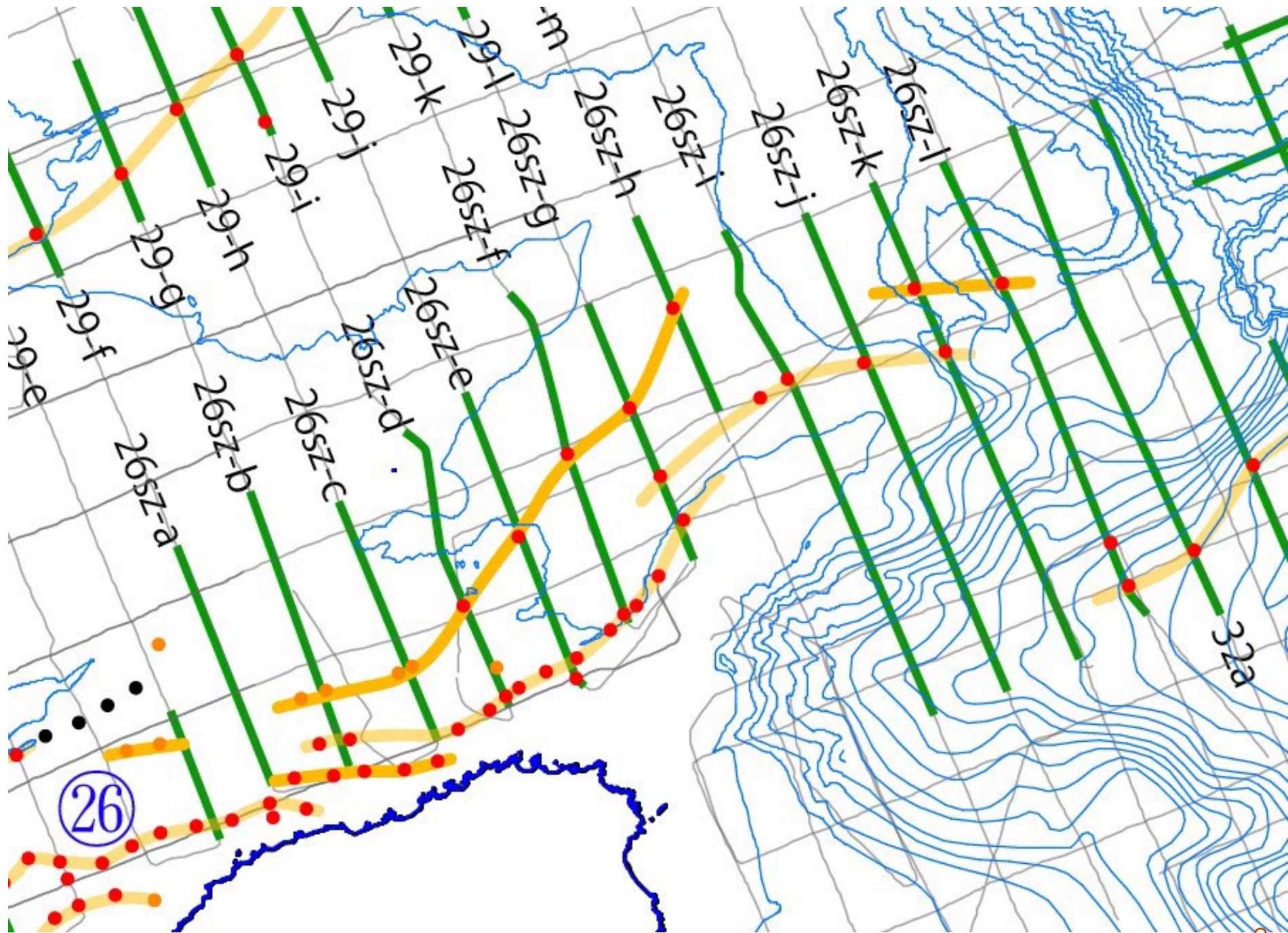
近畿－北陸沖海域活断層案及び反射断面 (珠洲沖－舩倉島)

2024/2/2

産業技術総合研究所
活断層・火山研究部門
岡村行信



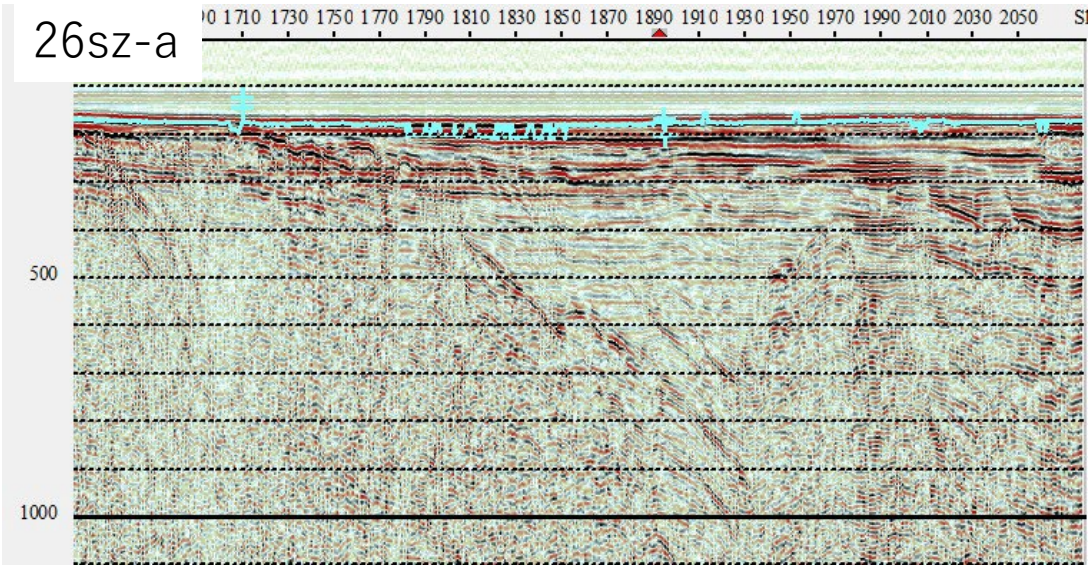
珠洲沖



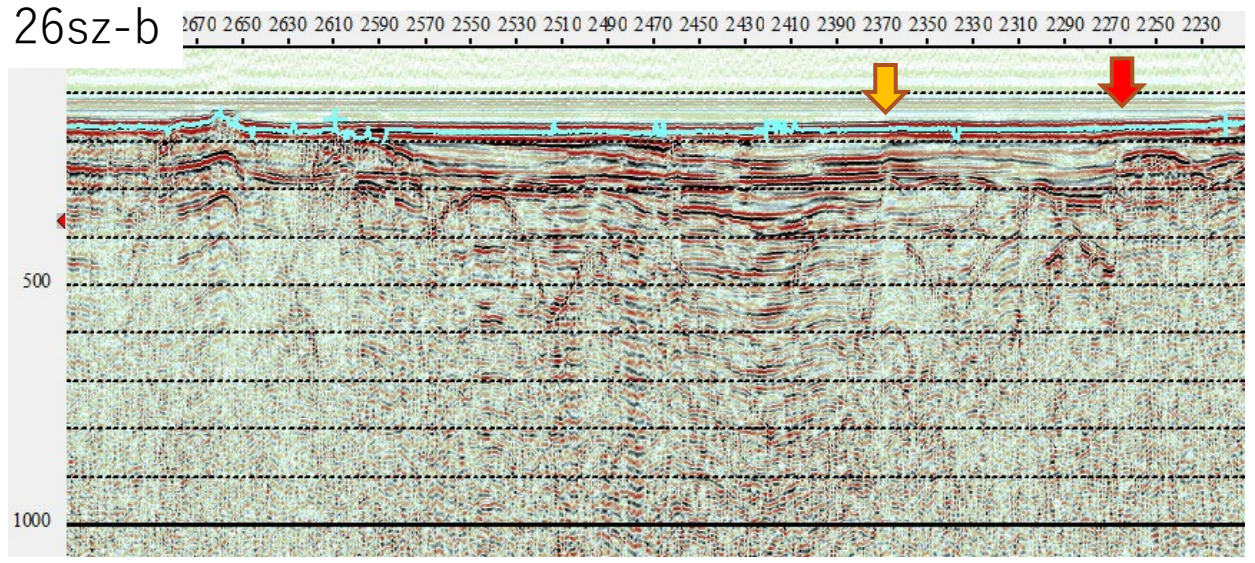
- 活断層
- 活断層か不明な断層位置
- 活断層でないと判定した断層位置

NW←

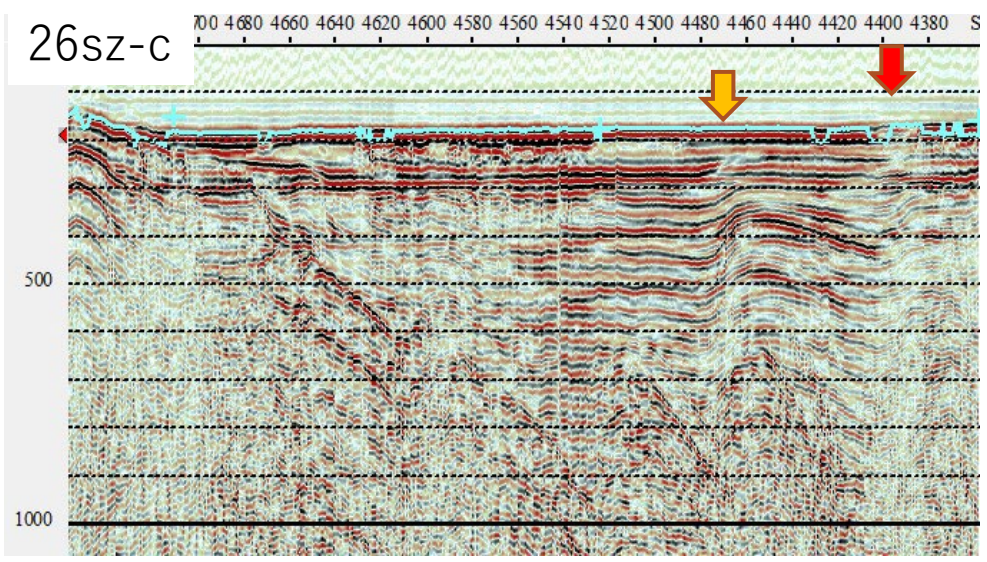
26sz-a



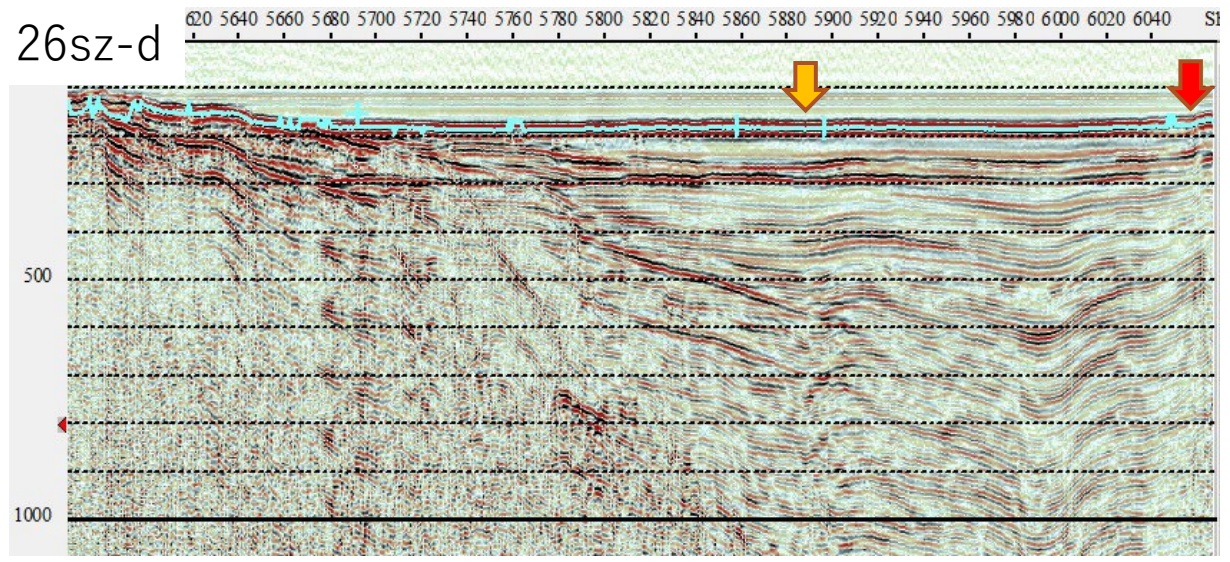
26sz-b



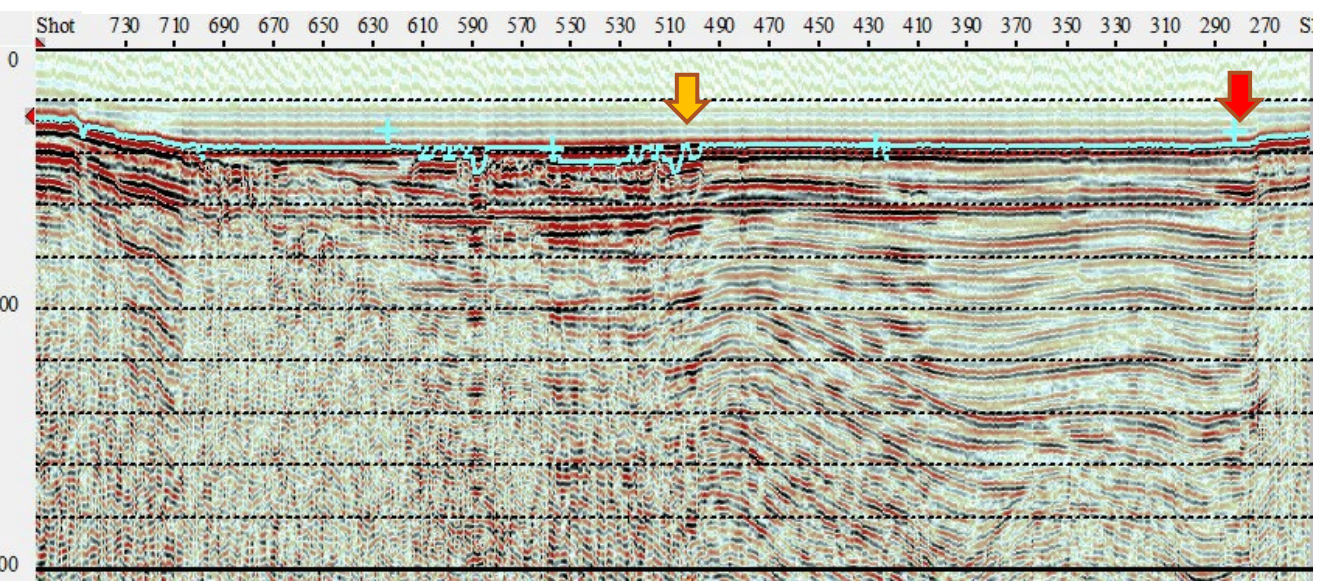
26sz-c



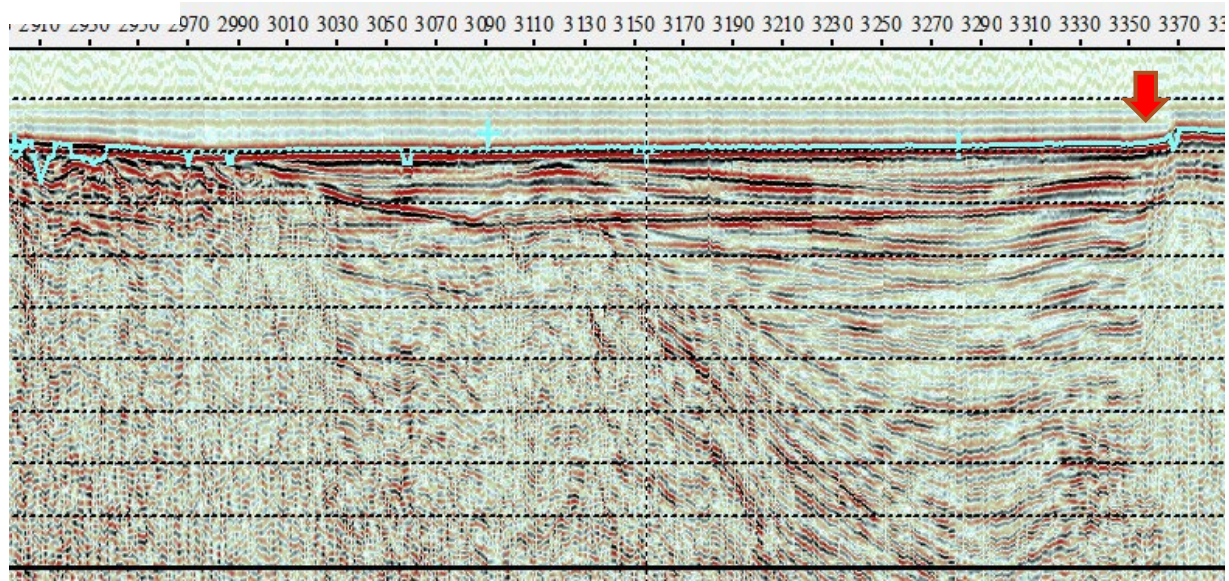
26sz-d



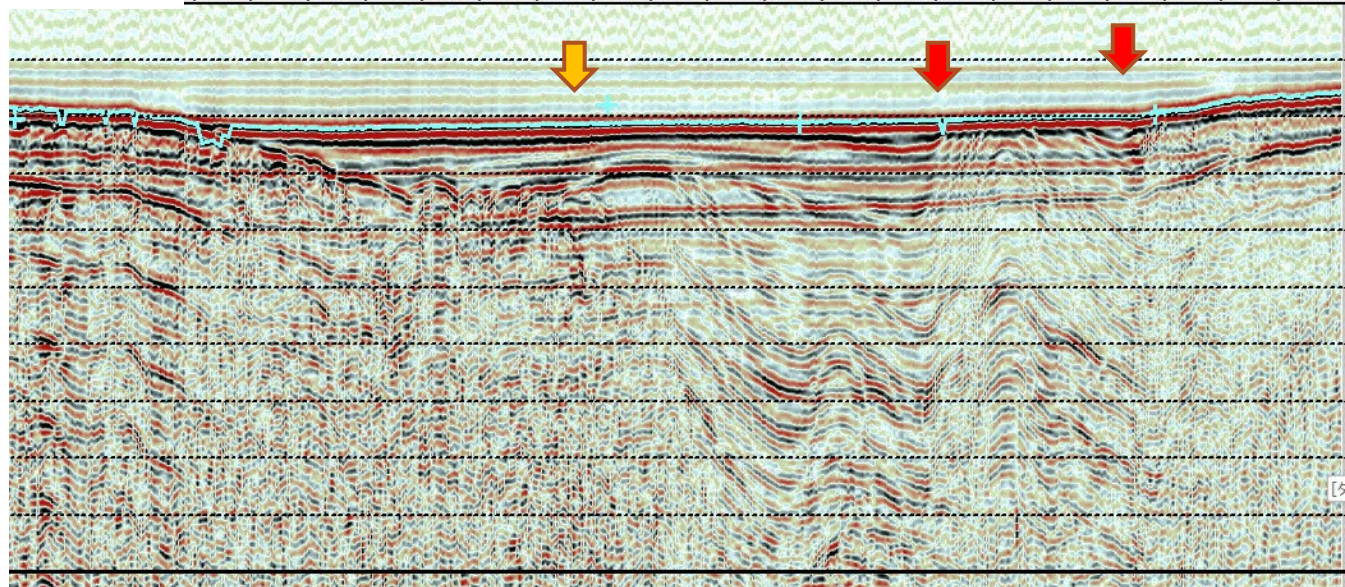
26sz-e NW ←



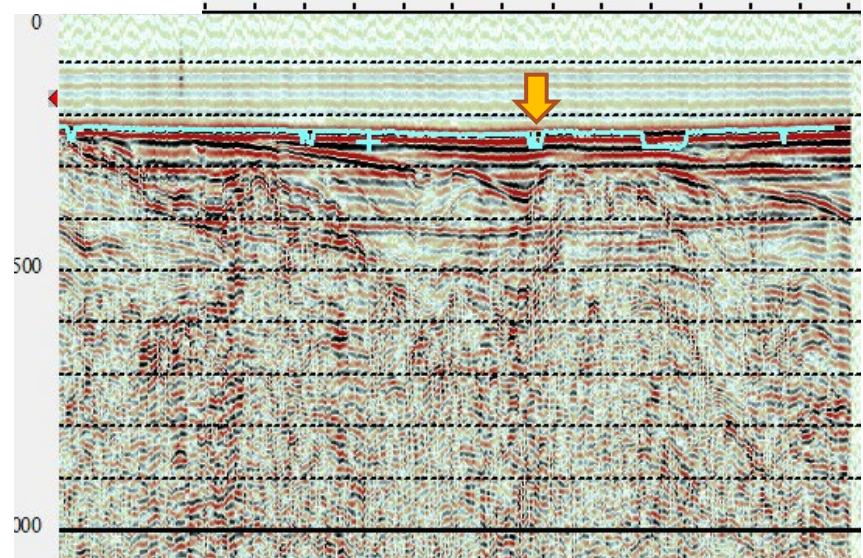
26sz-f

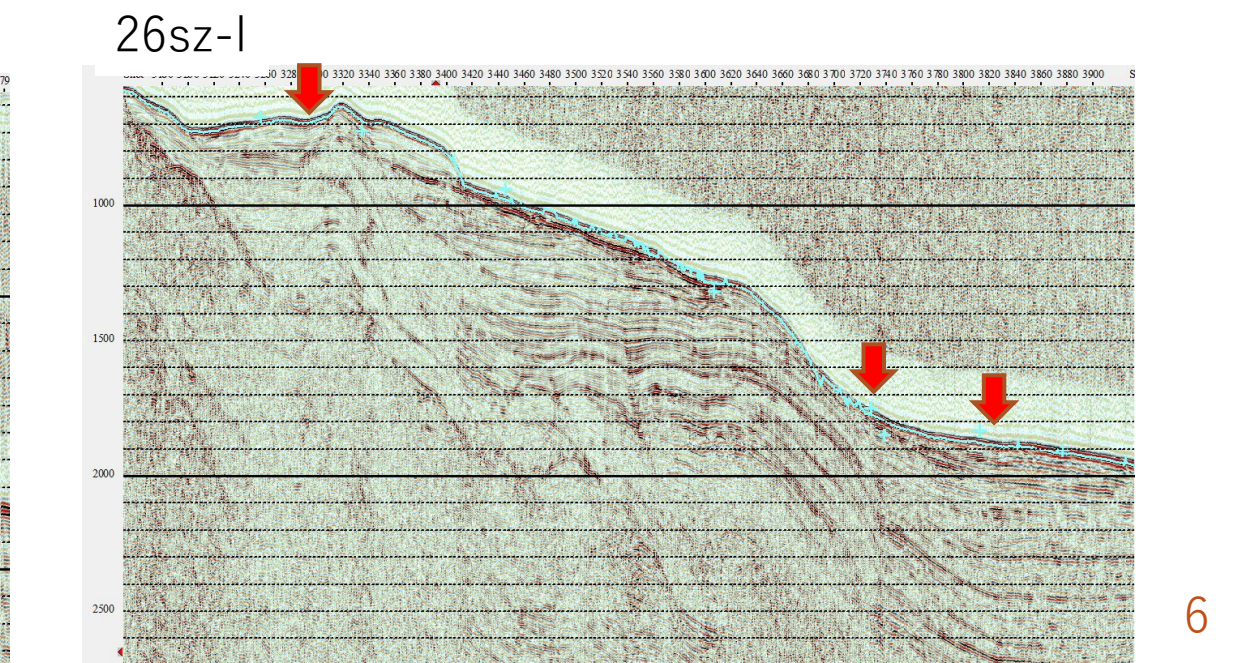
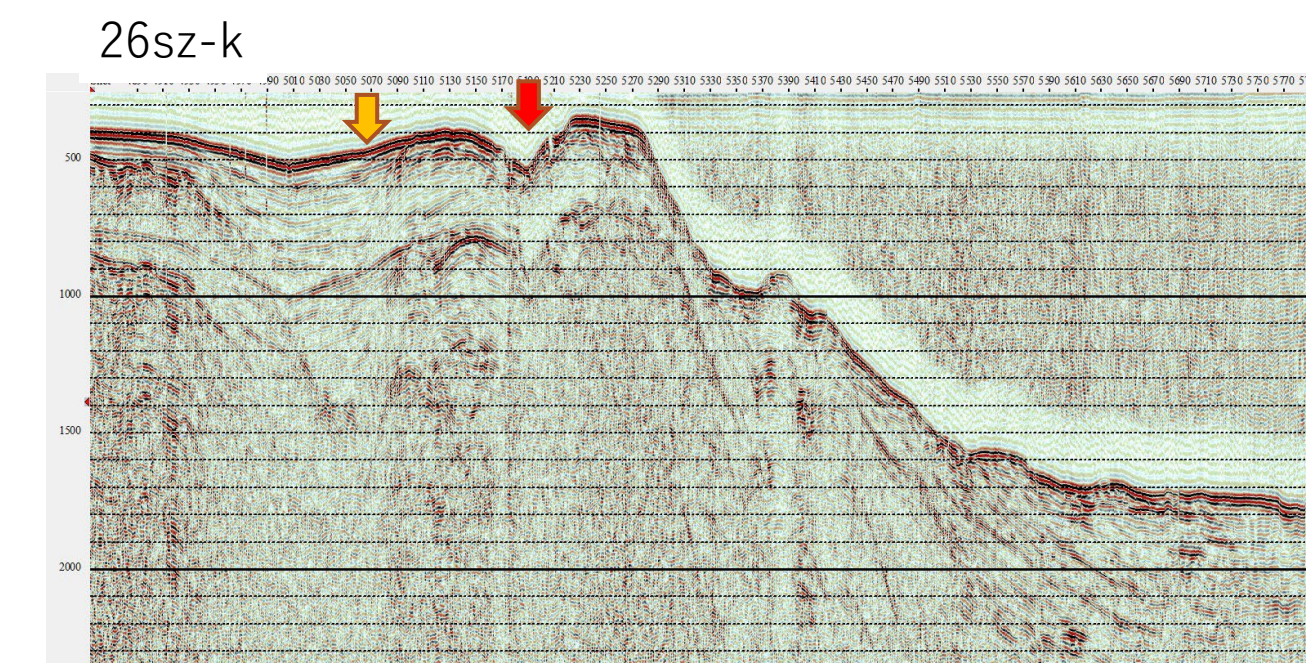
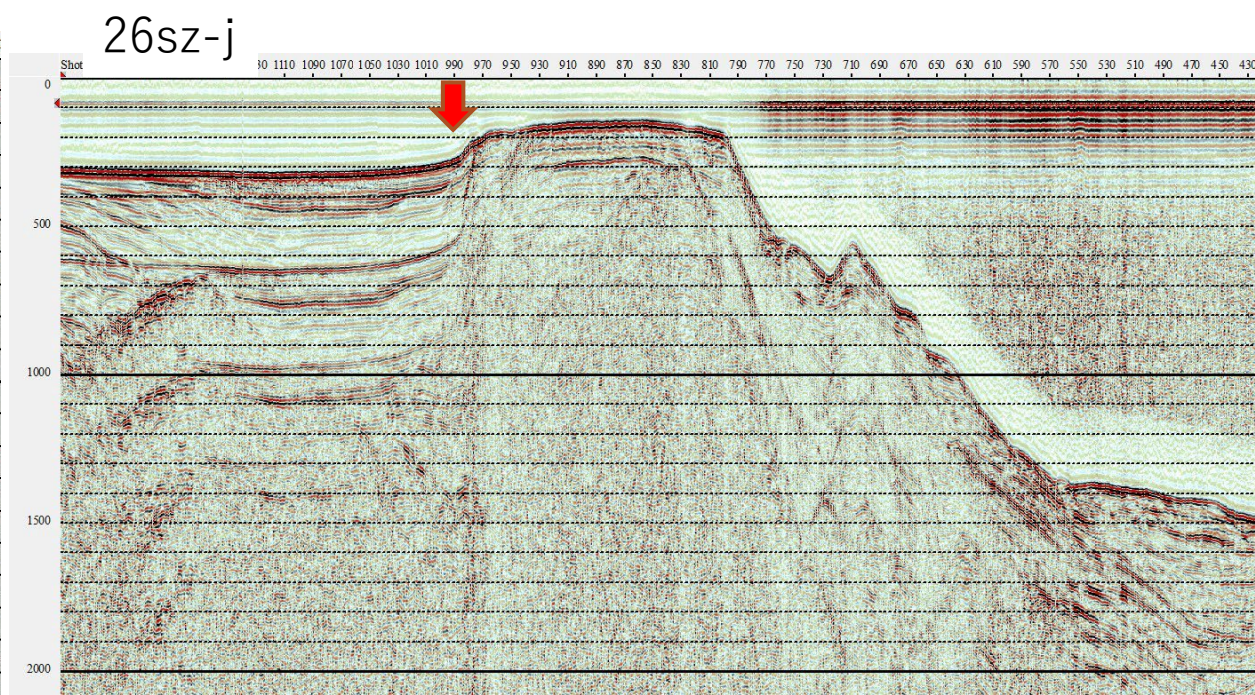
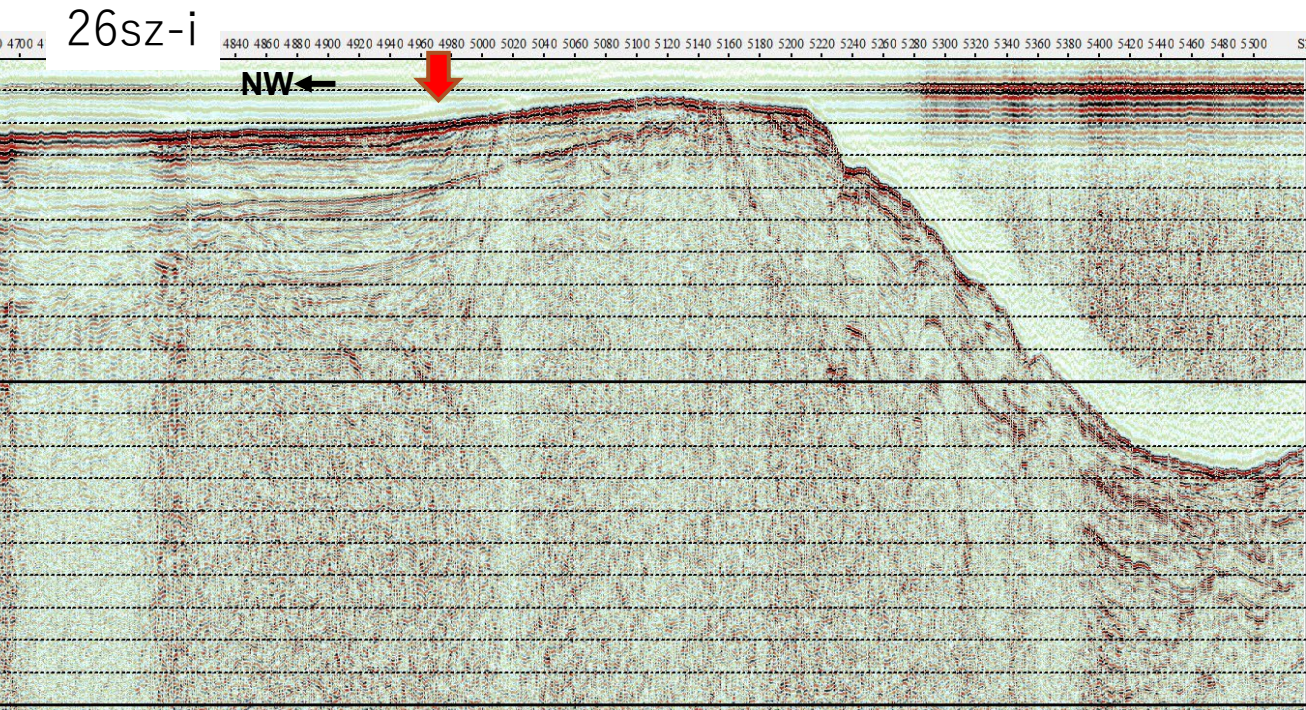


26sz-g

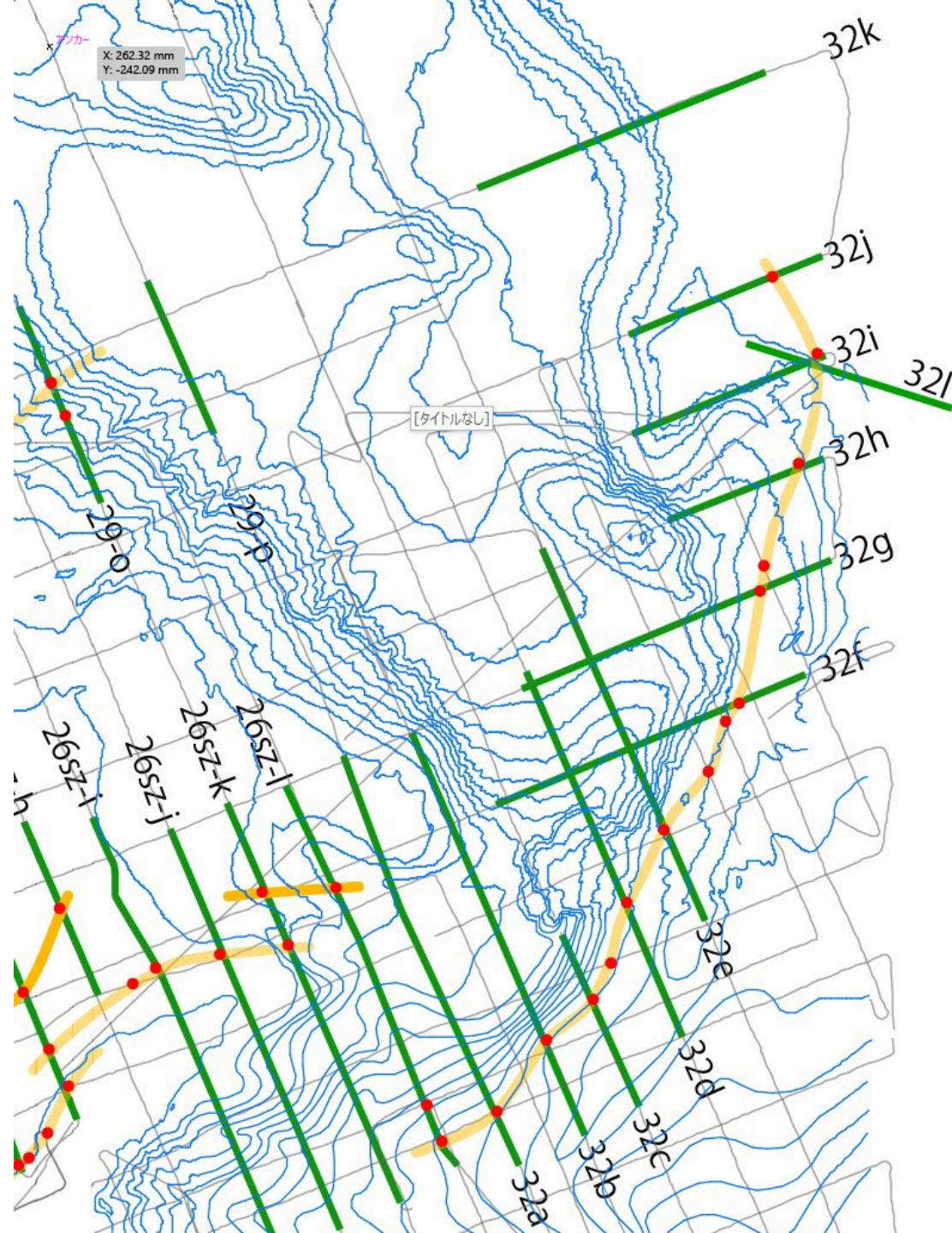


26sz-h

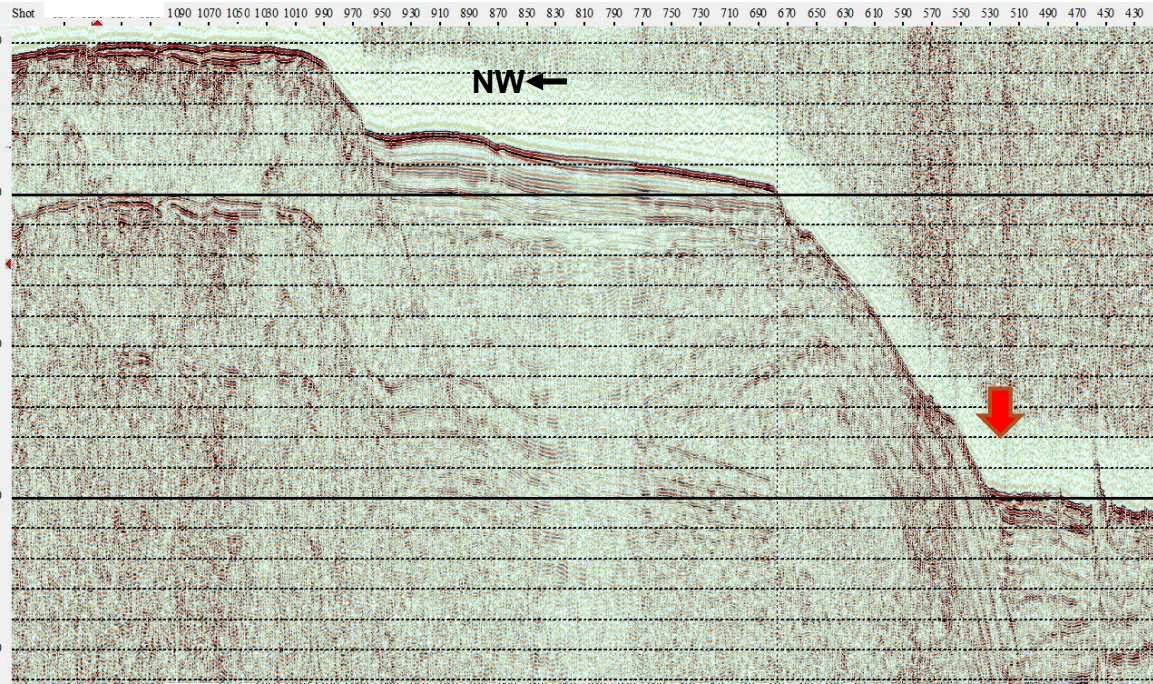




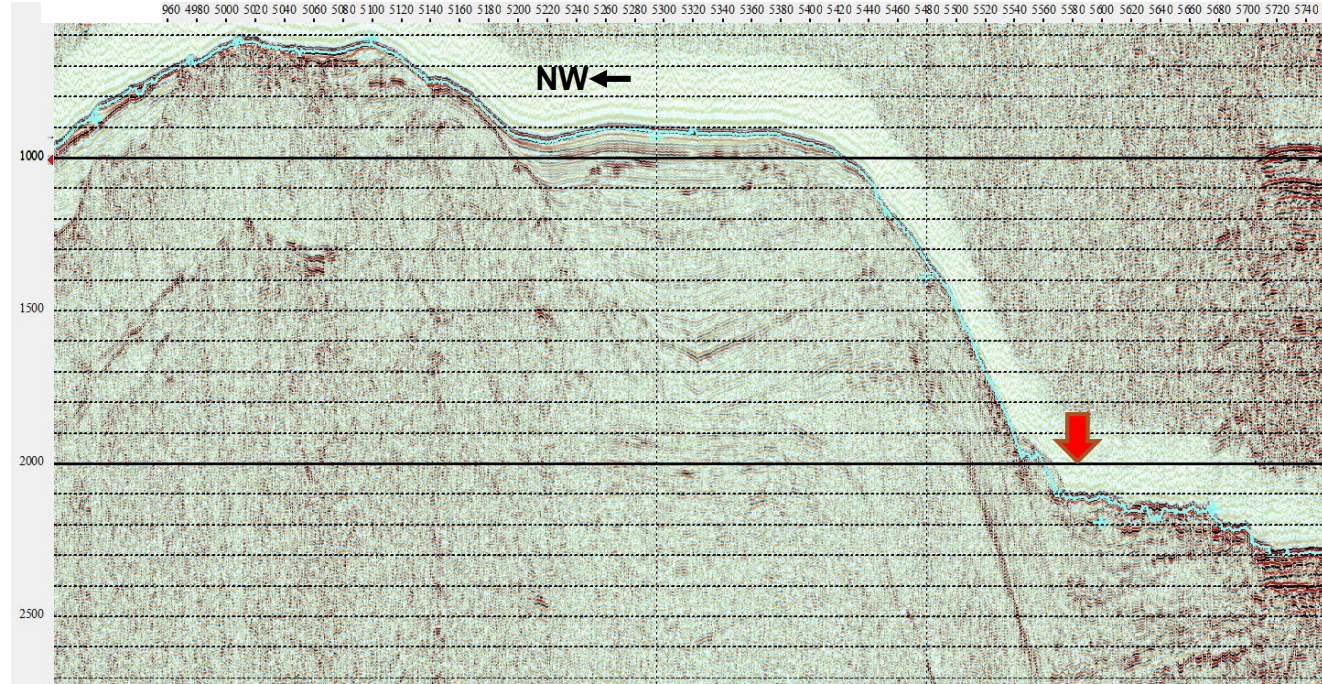
富山トラフ西縁



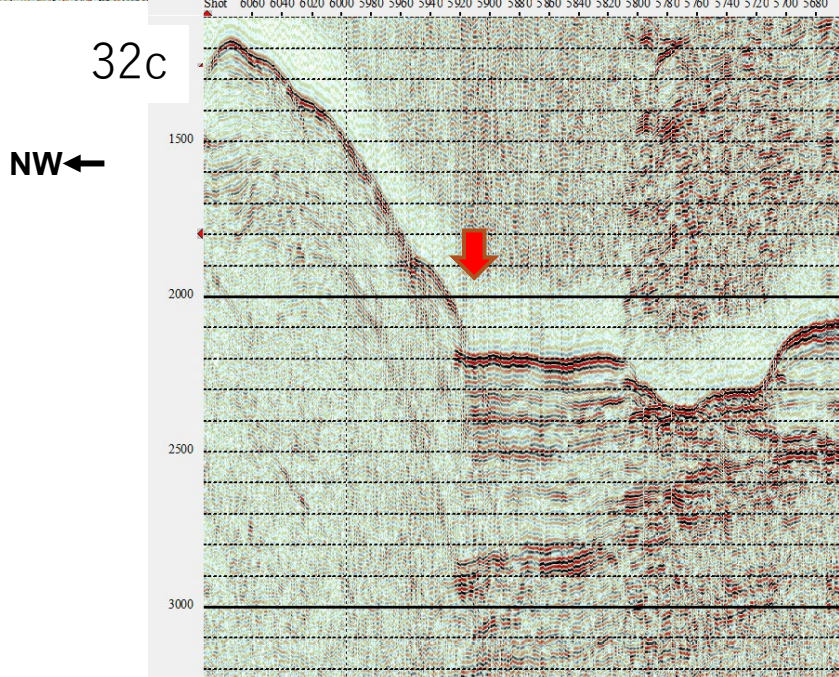
32a



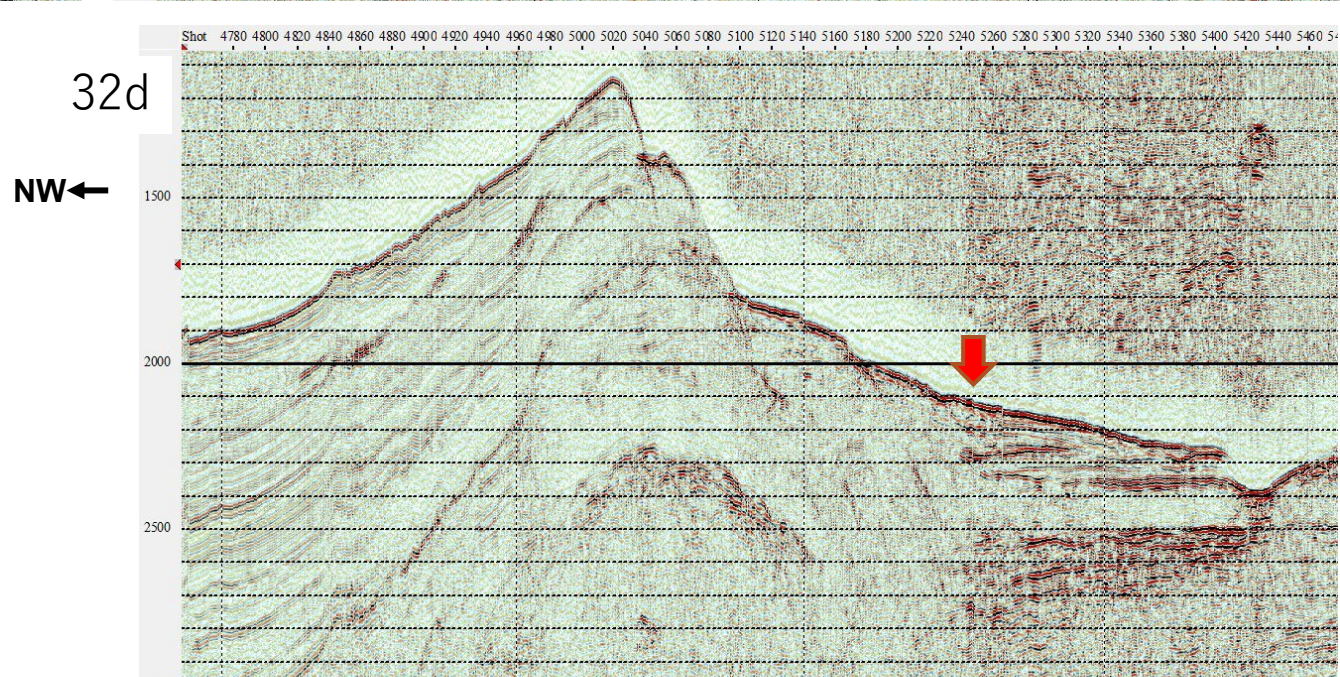
32b

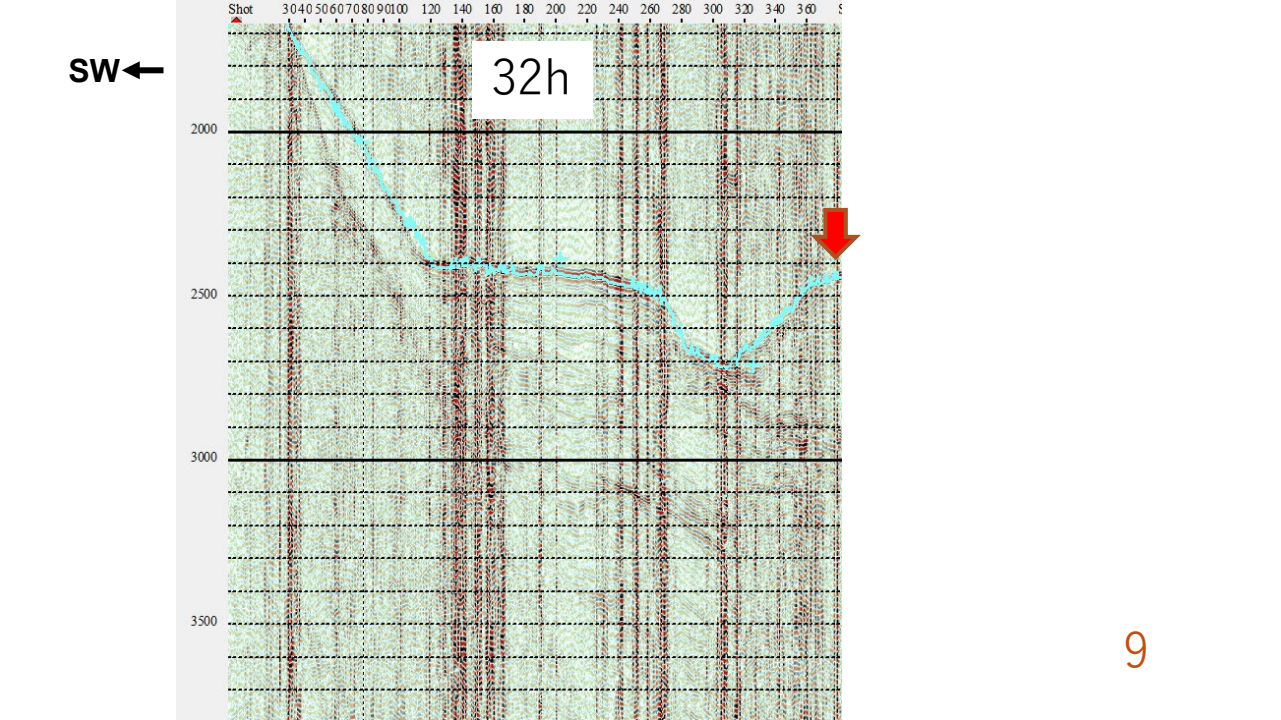
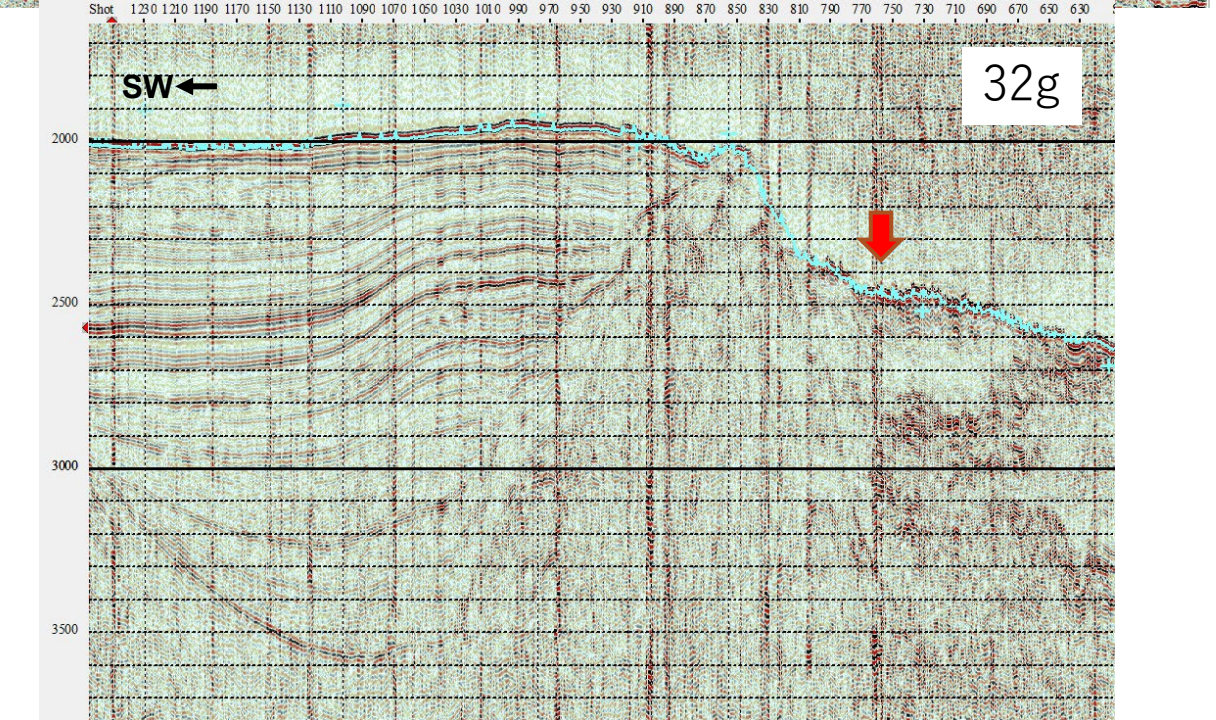
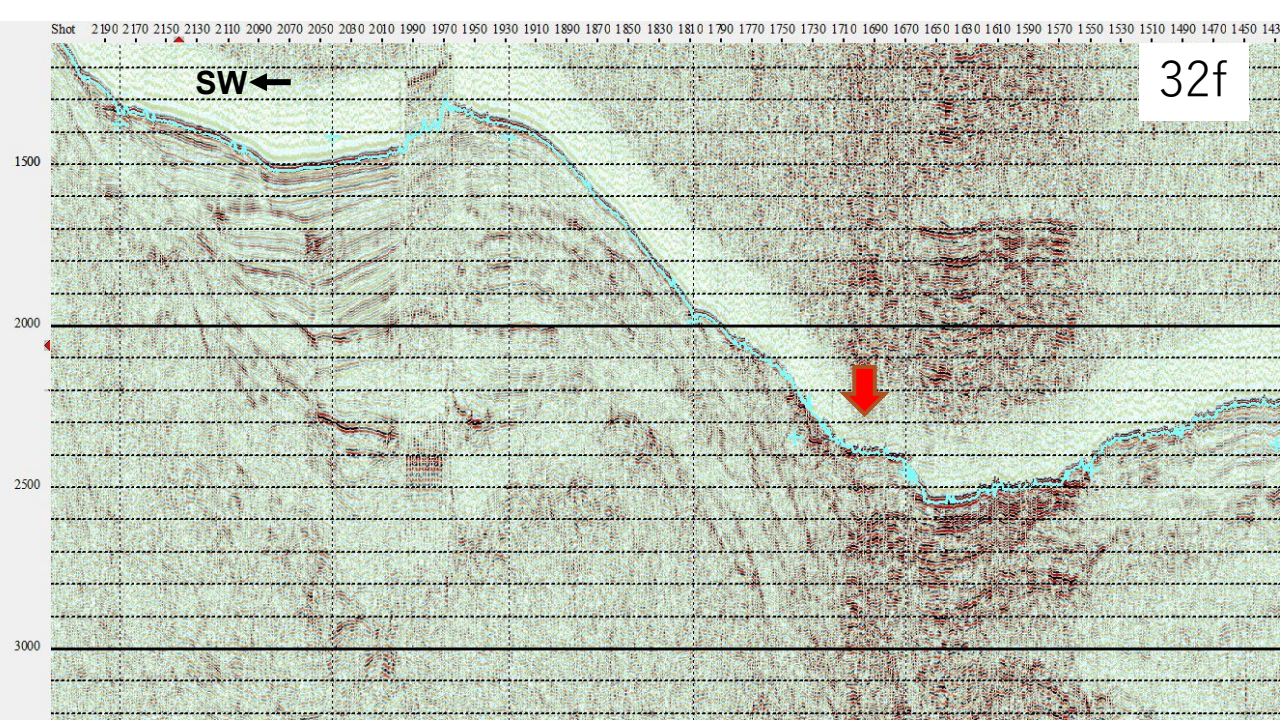
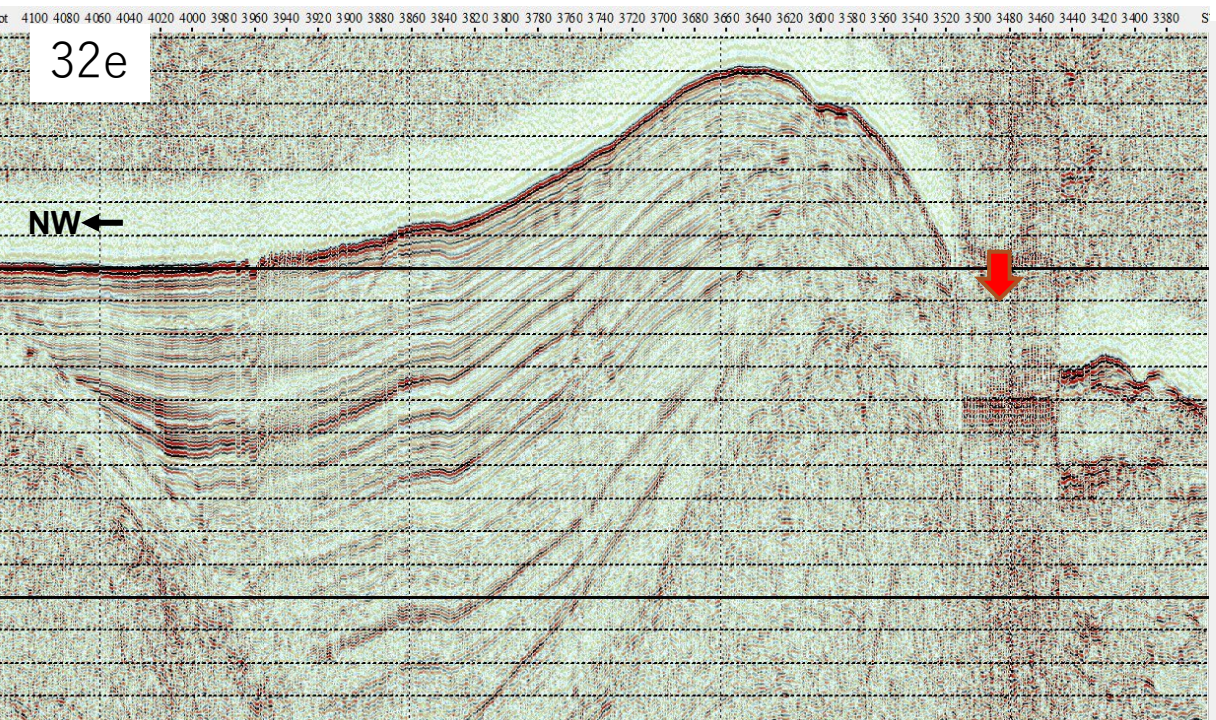


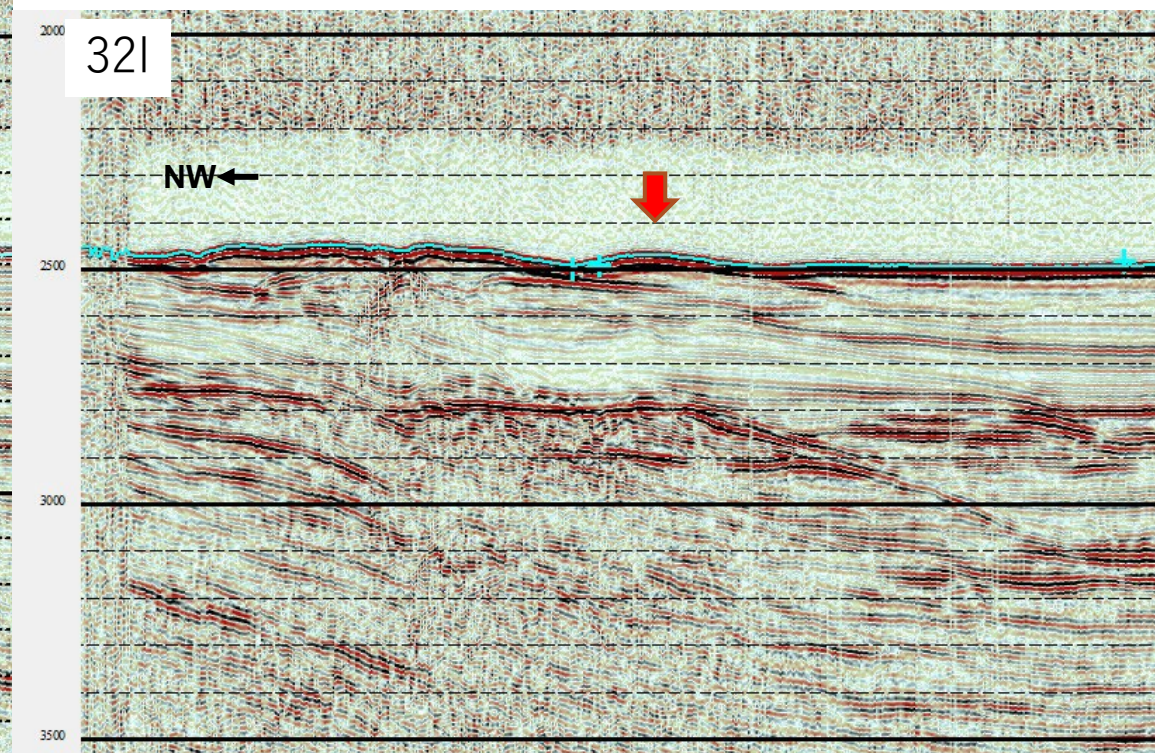
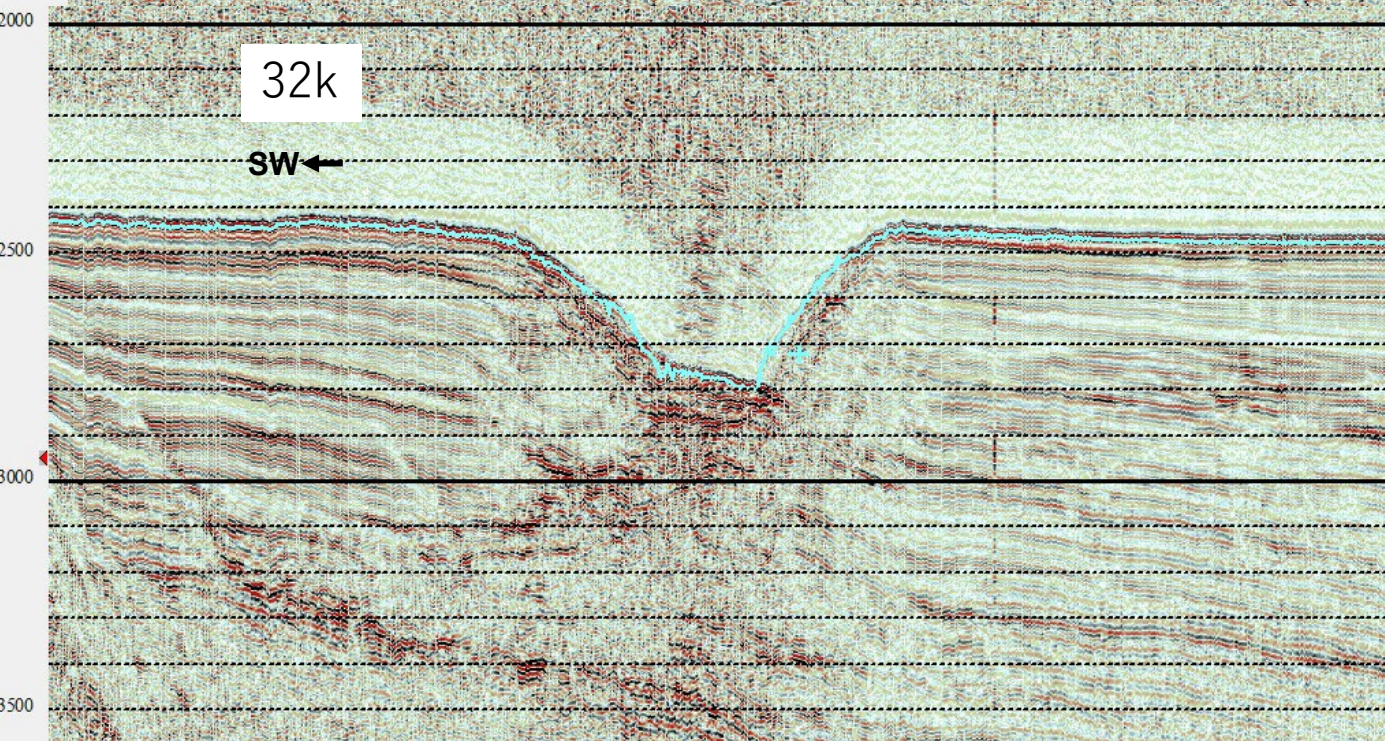
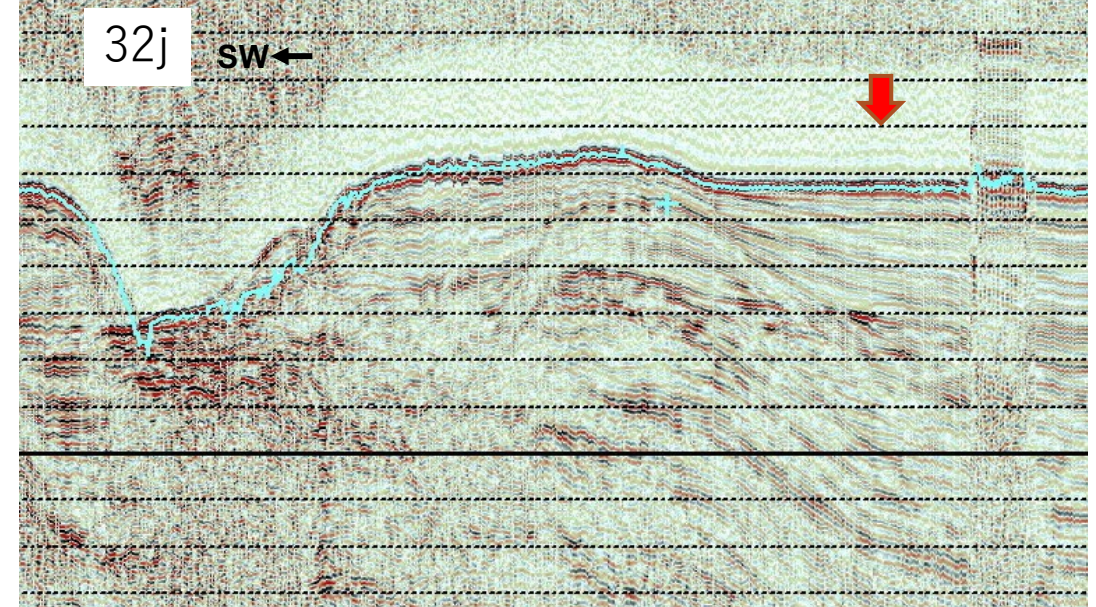
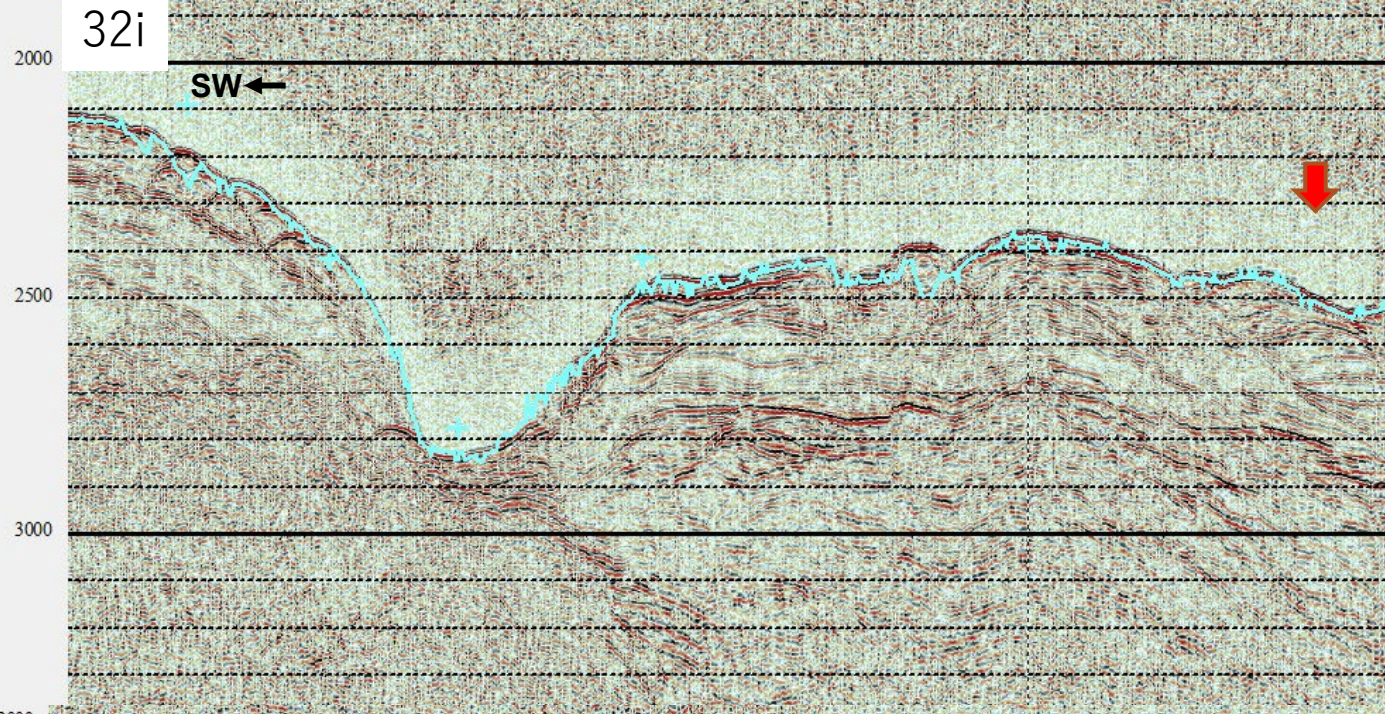
32c



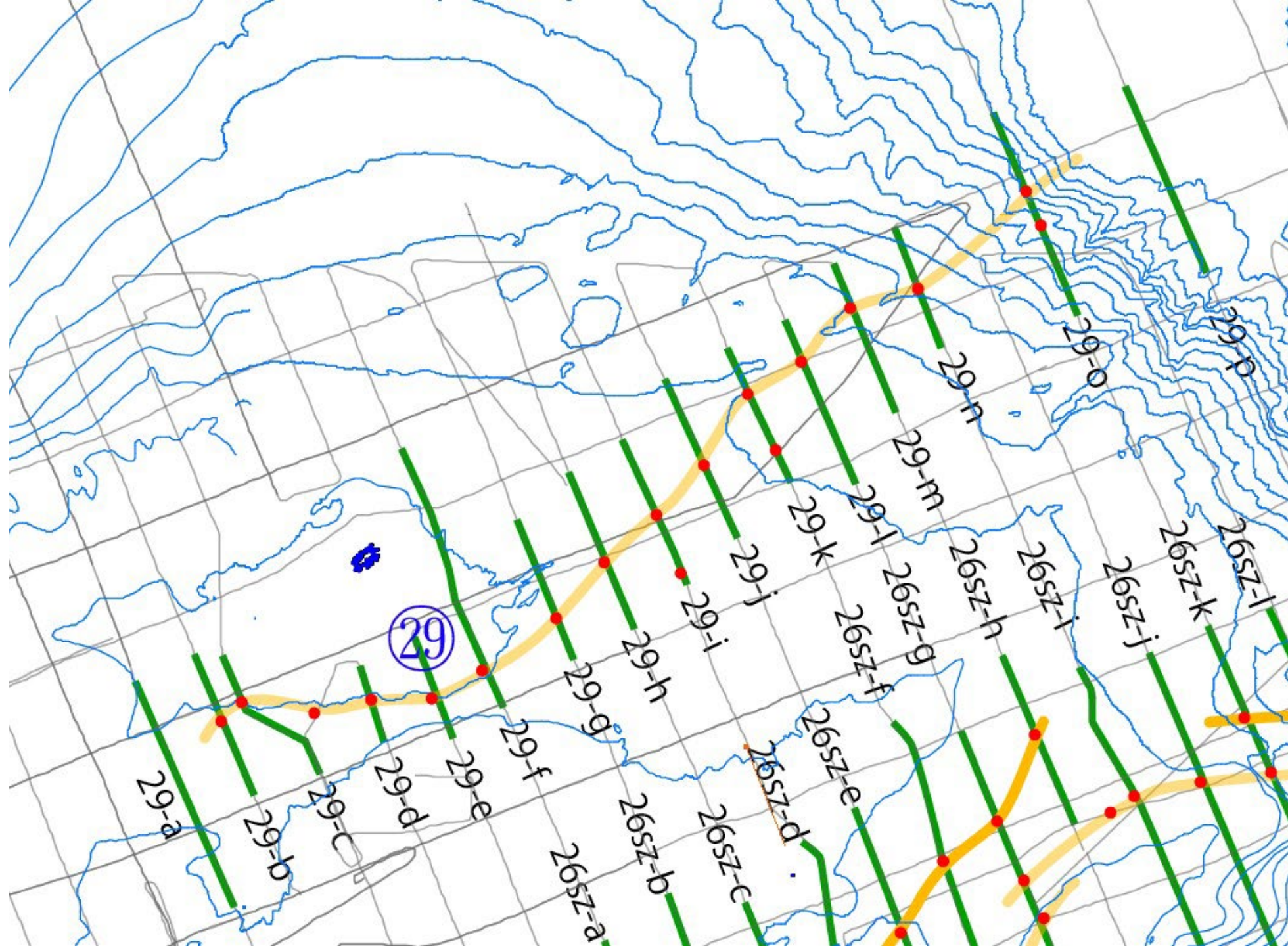
32d







舢倉島



NW←

