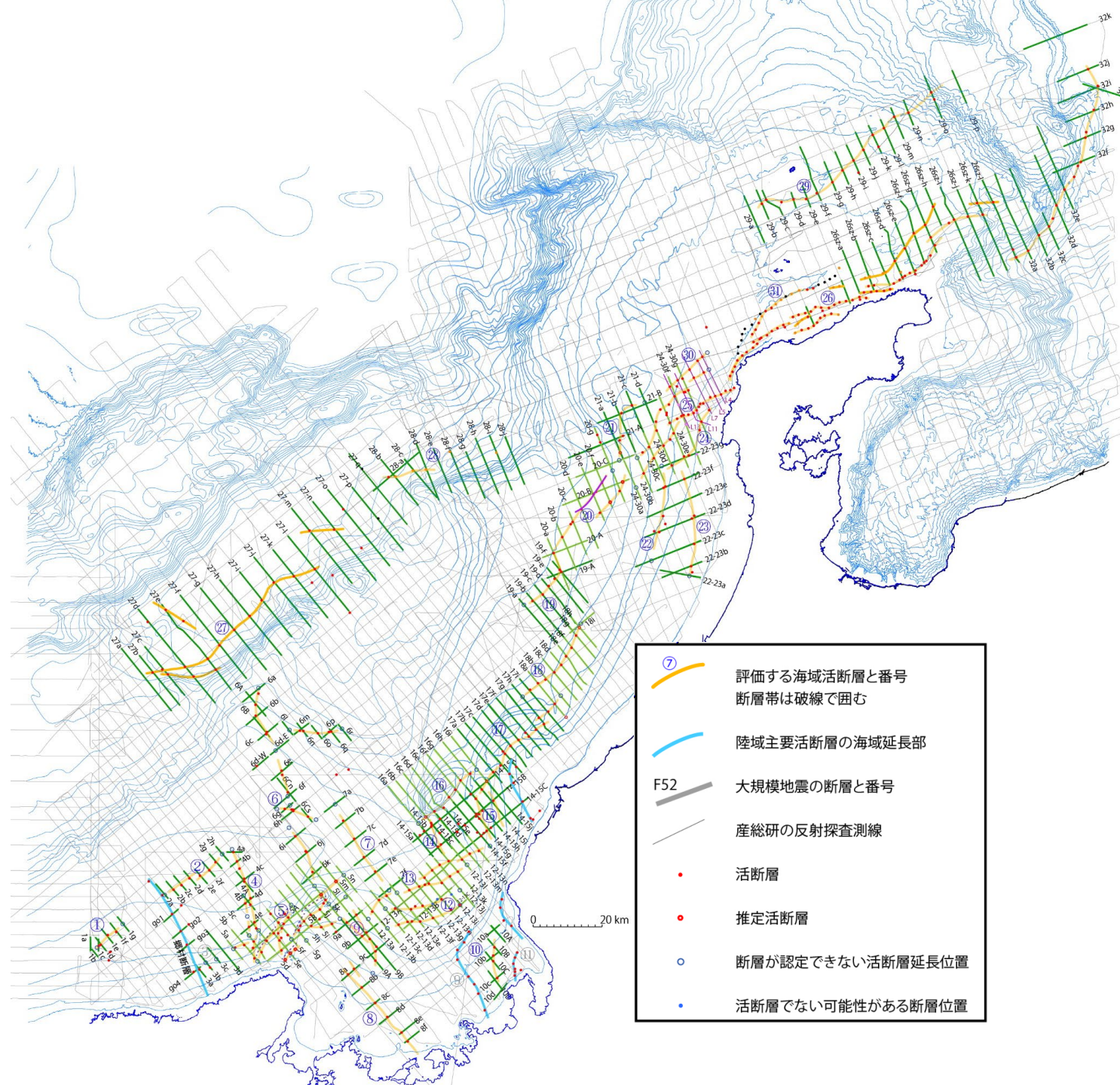










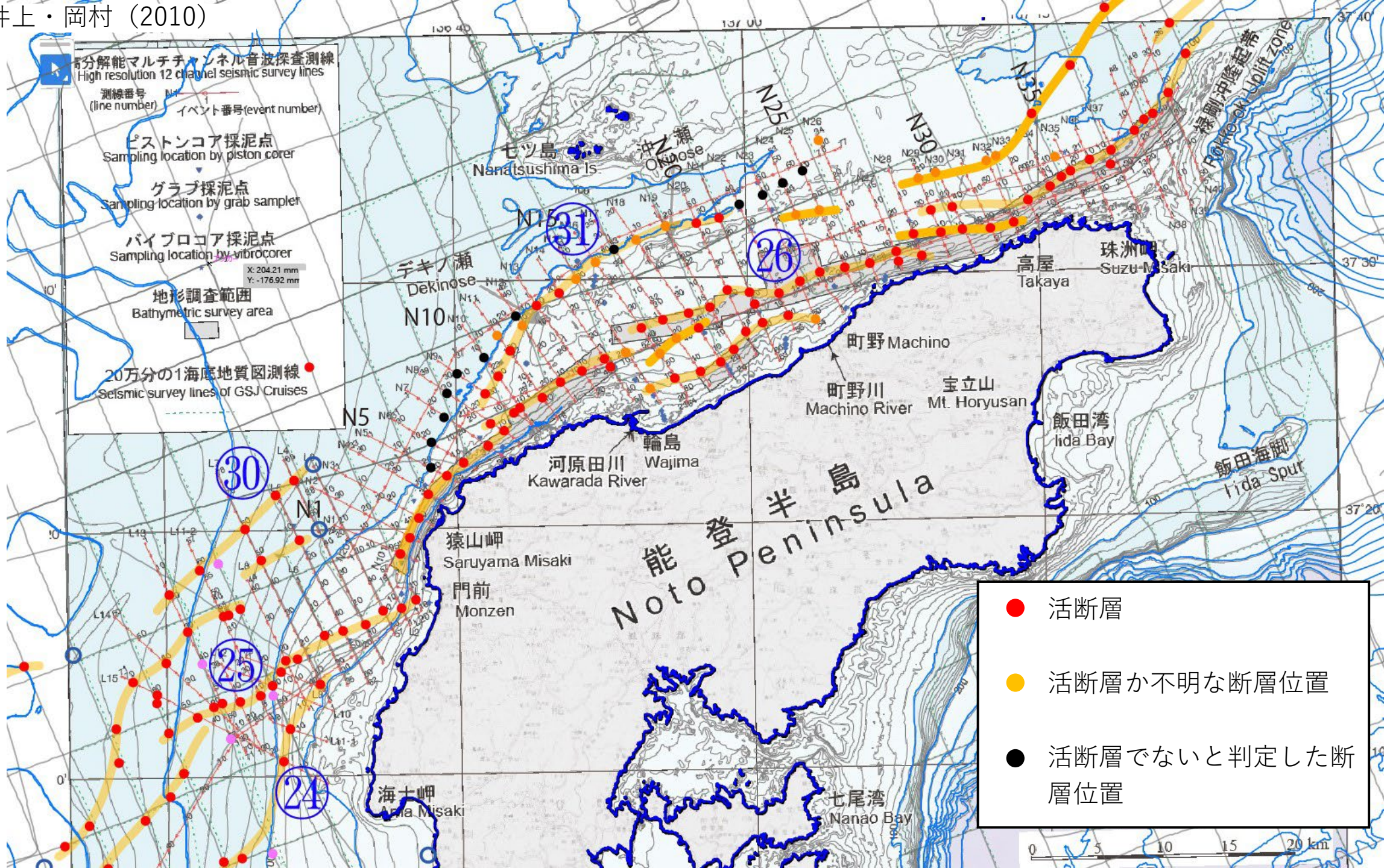
近畿－北陸沖海域活断層案及び反射断面 (能登半島北岸)

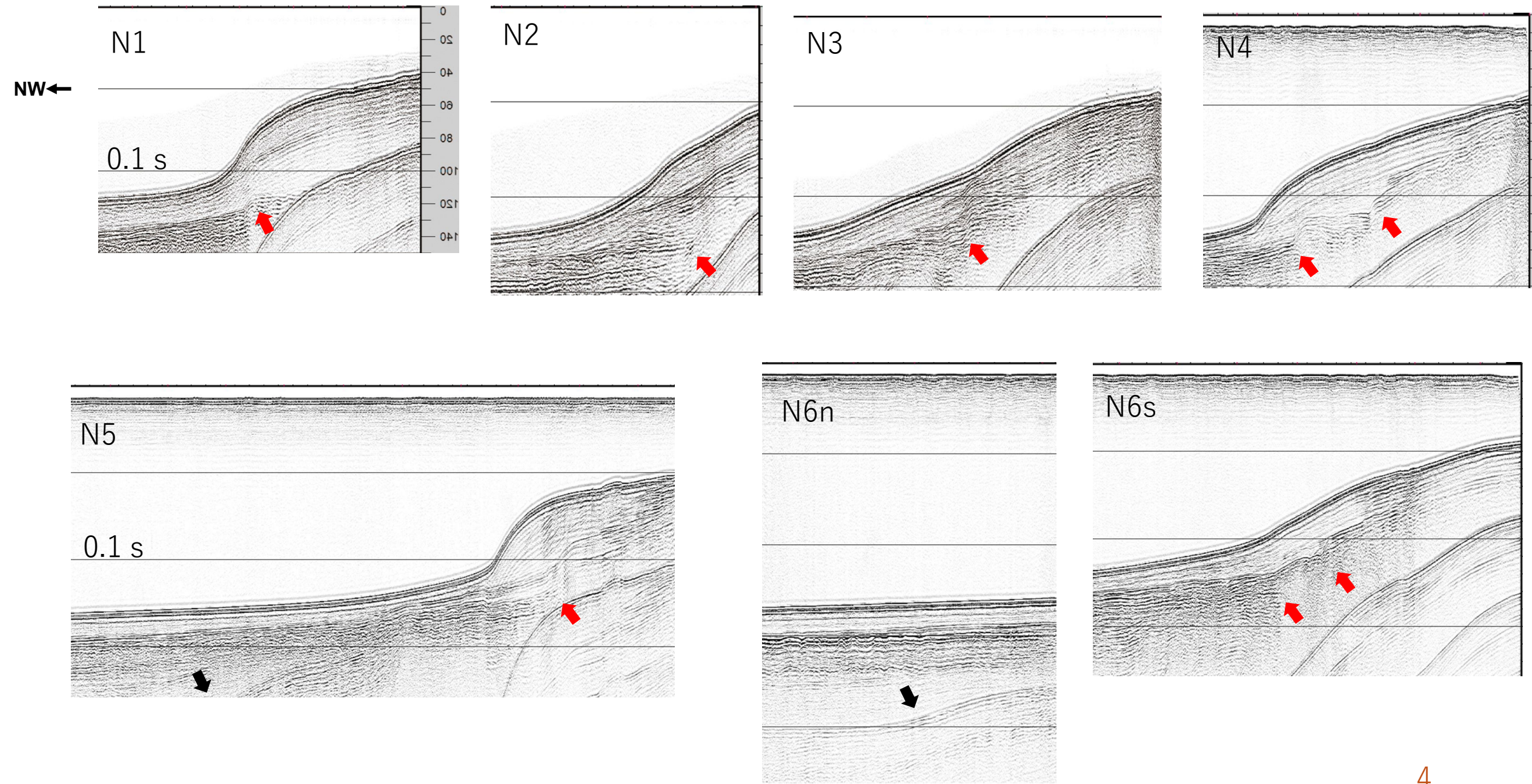
2024/2/2

産業技術総合研究所
活断層・火山研究部門
岡村行信

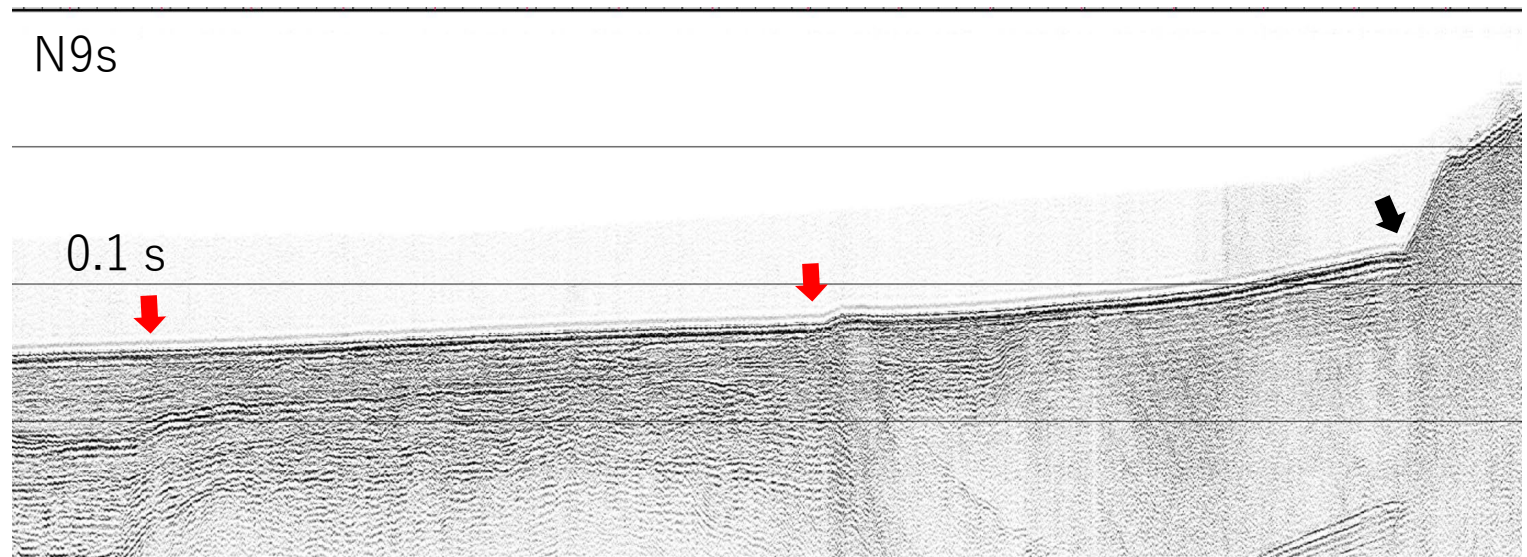
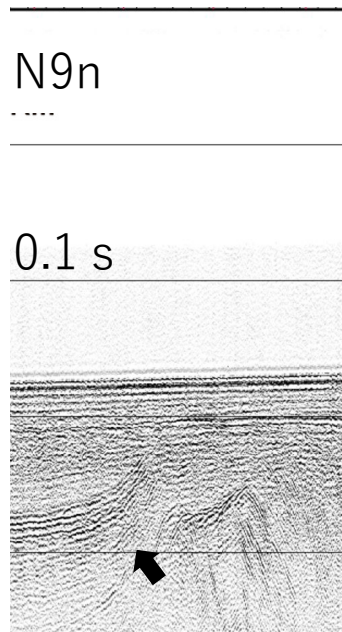
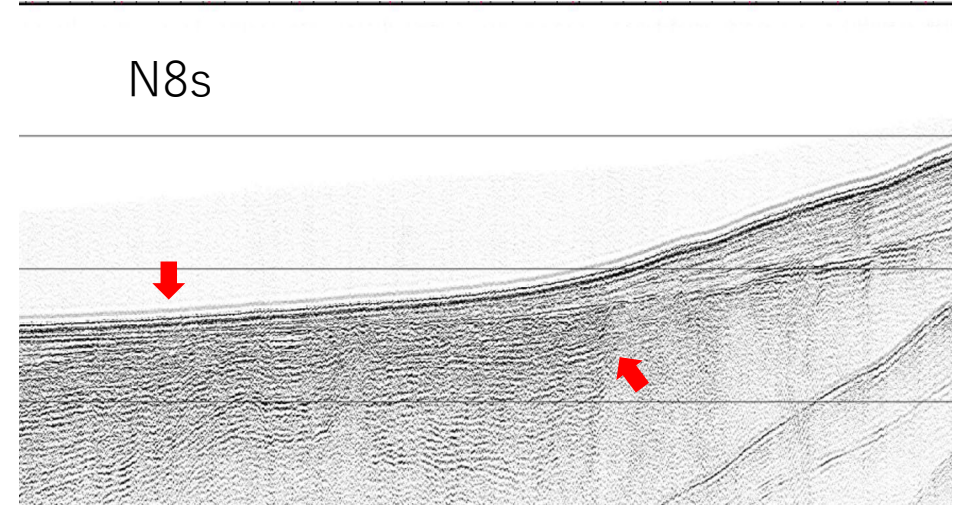
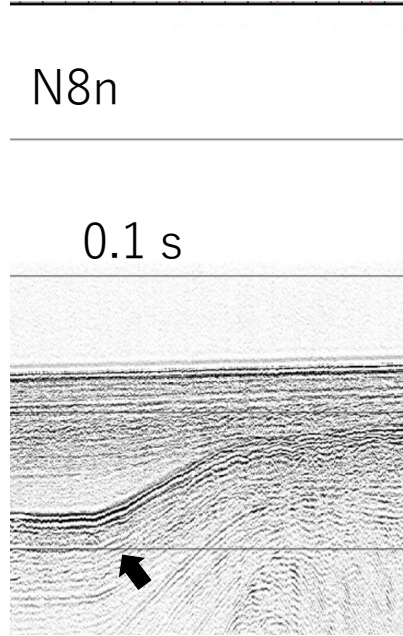
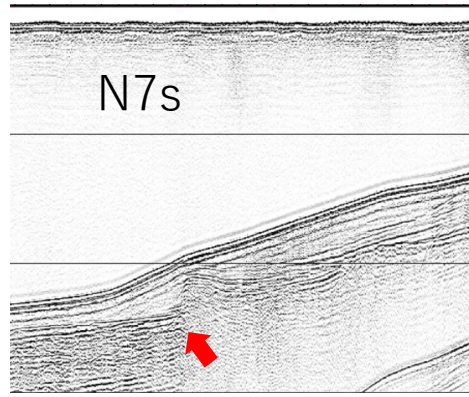
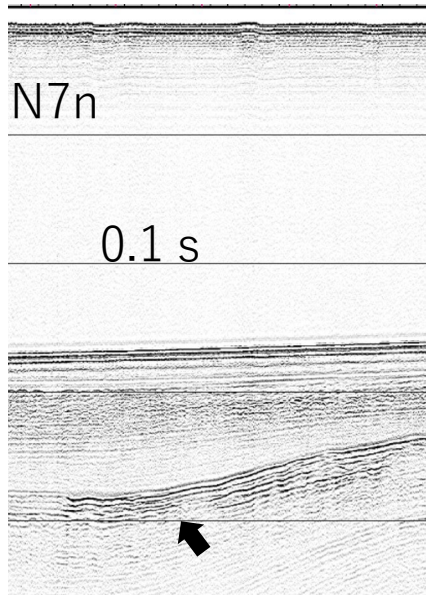


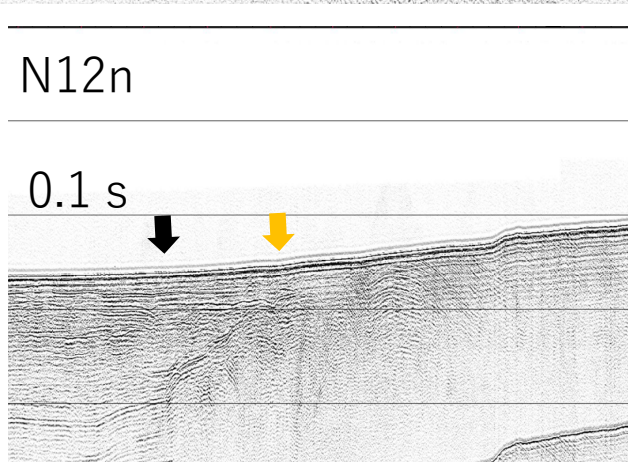
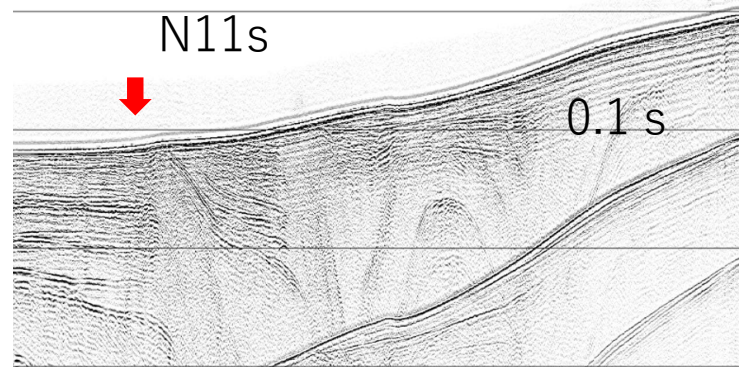
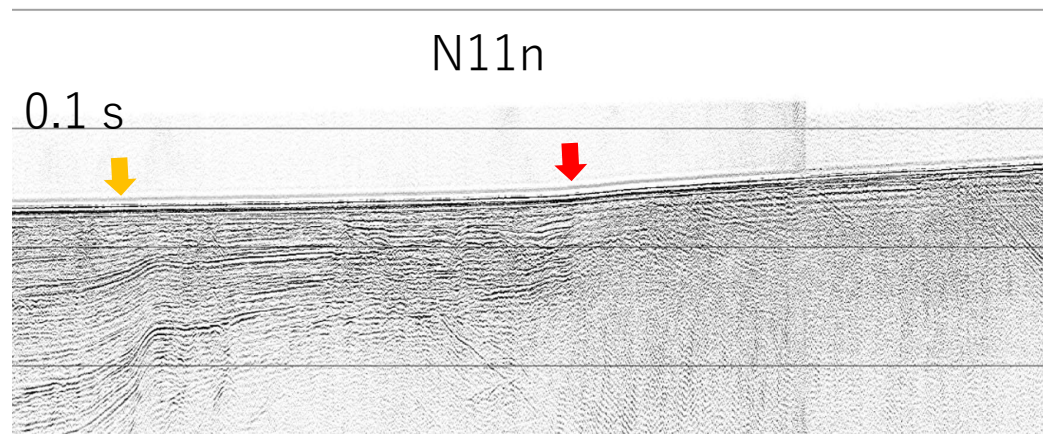
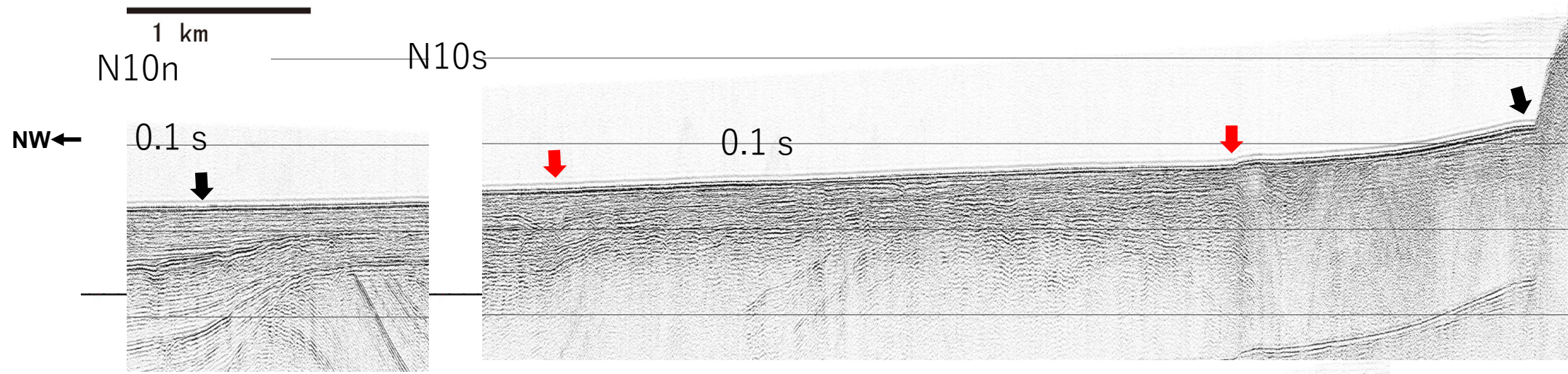
-  評価する海域活断層と番号
断層帯は破線で囲む
-  陸域主要活断層の海域延長部
-  大規模地震の断層と番号
-  産総研の反射探査測線
-  活断層
-  推定活断層
-  断層が認定できない活断層延長位置
-  活断層でない可能性がある断層位置





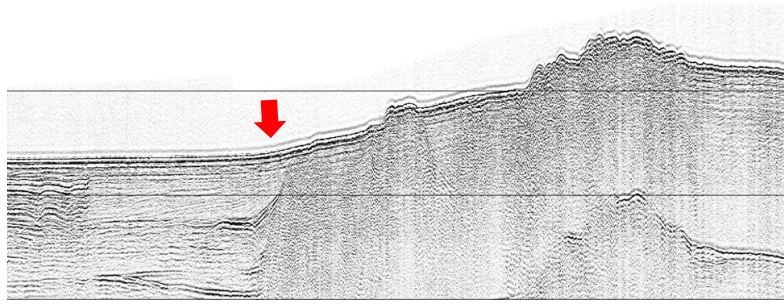
NW ←



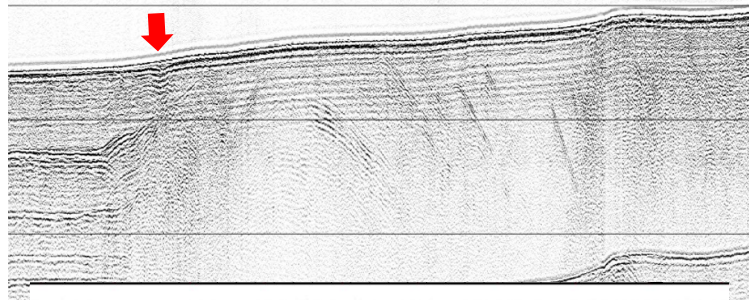


N13n

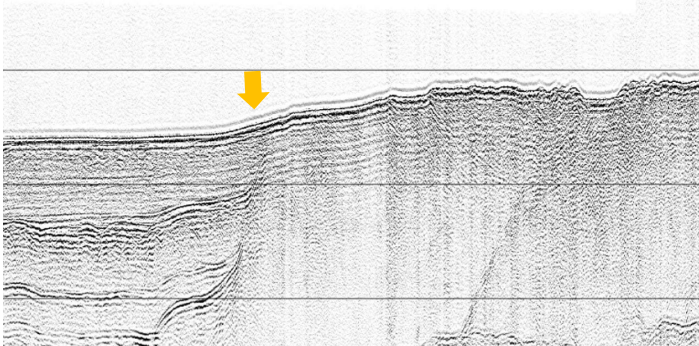
NW ←



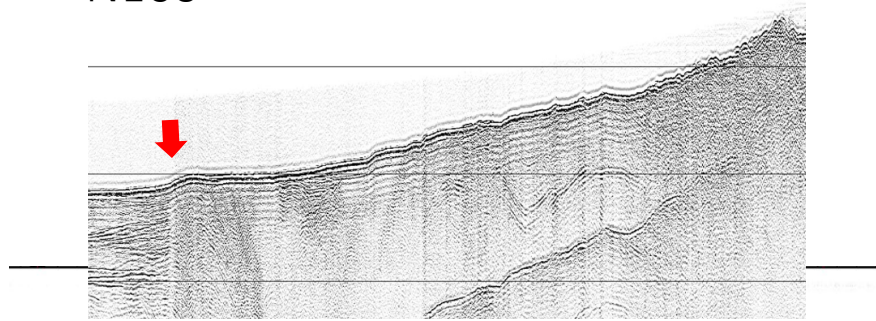
N14n



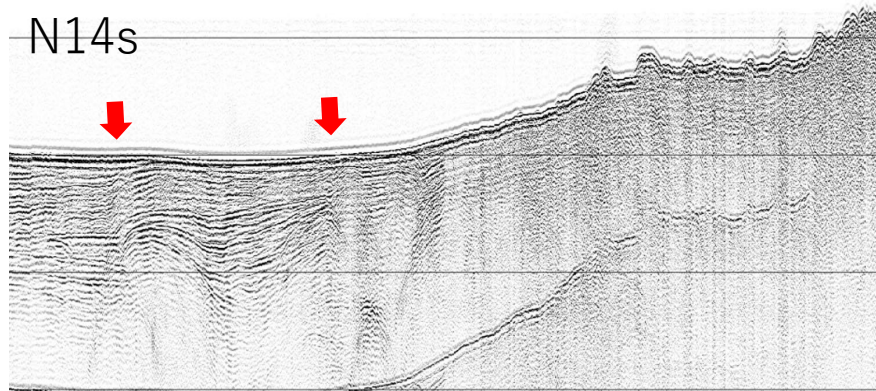
N15n



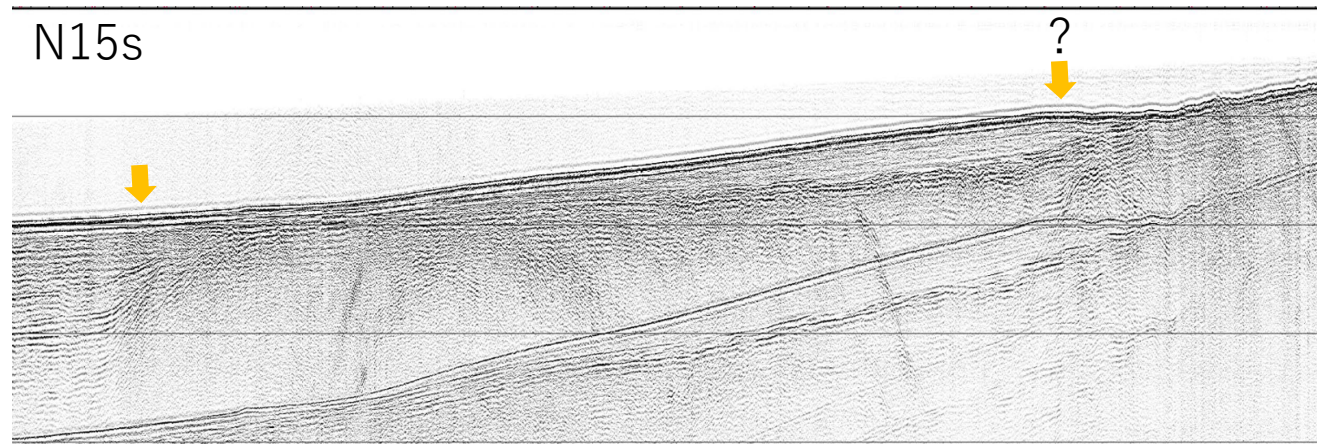
N13s



N14s



N15s



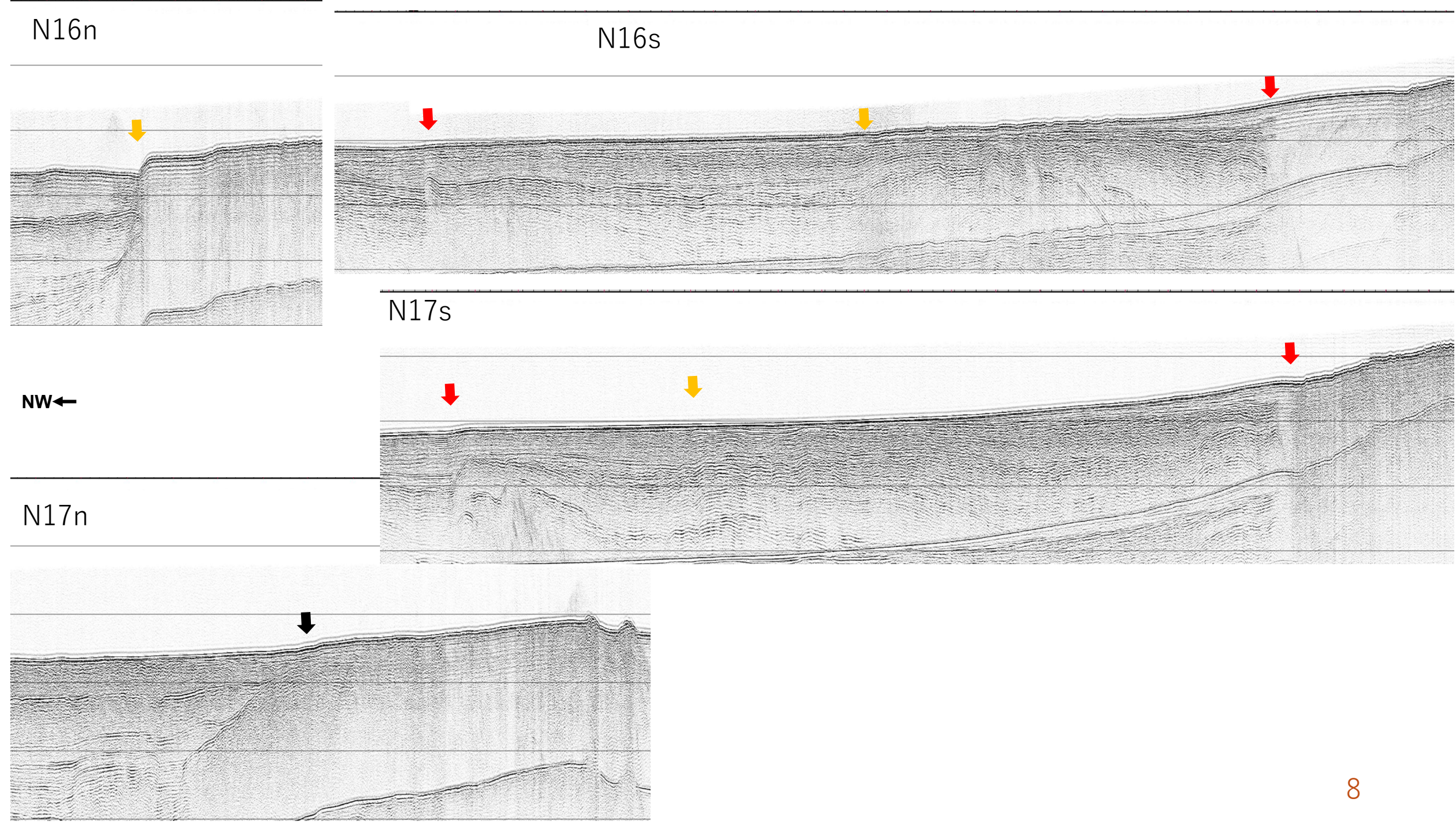
N16n

N16s

N17s

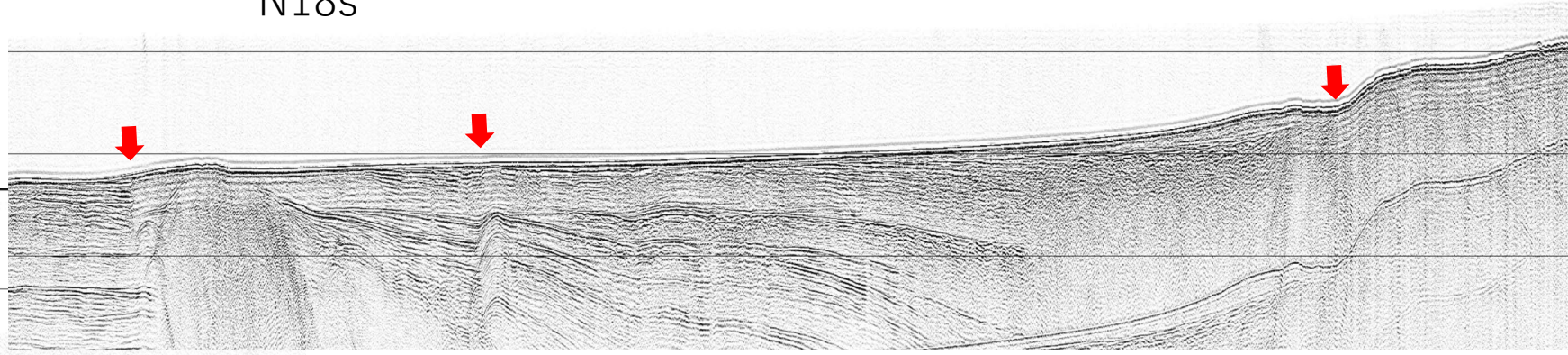
N17n

NW ←

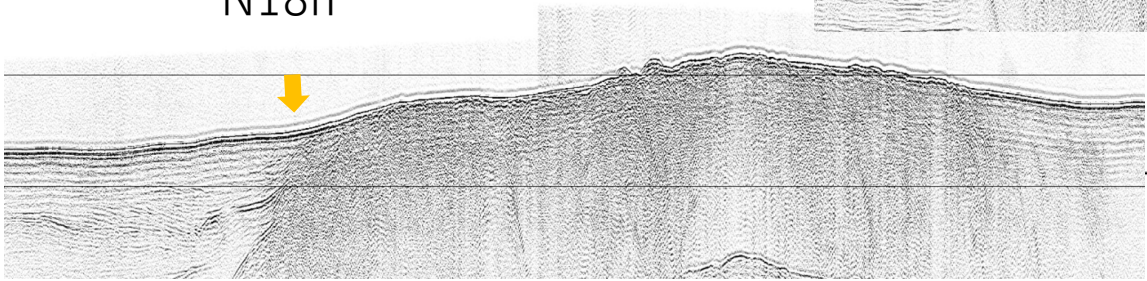


NW ←

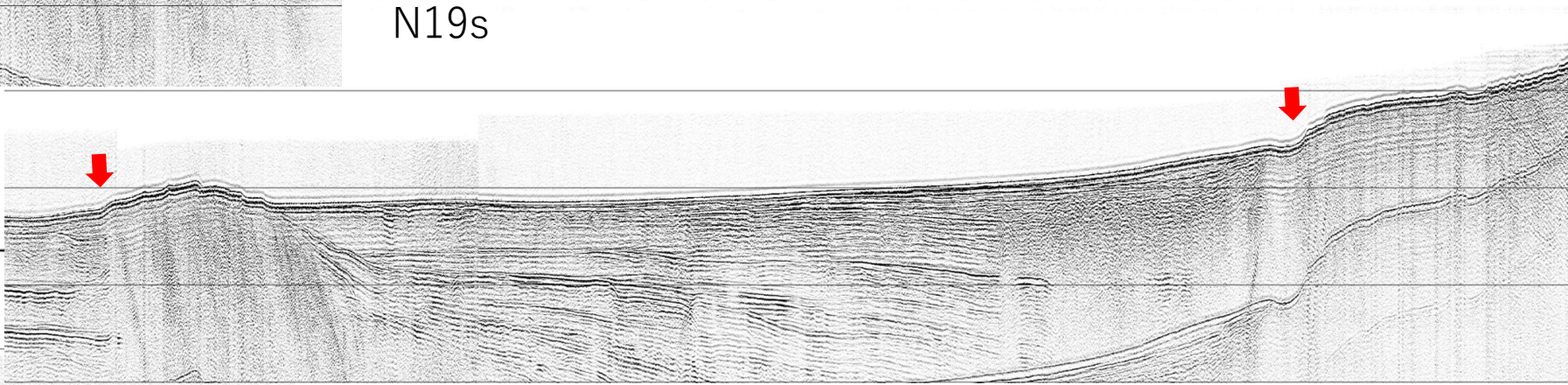
N18s



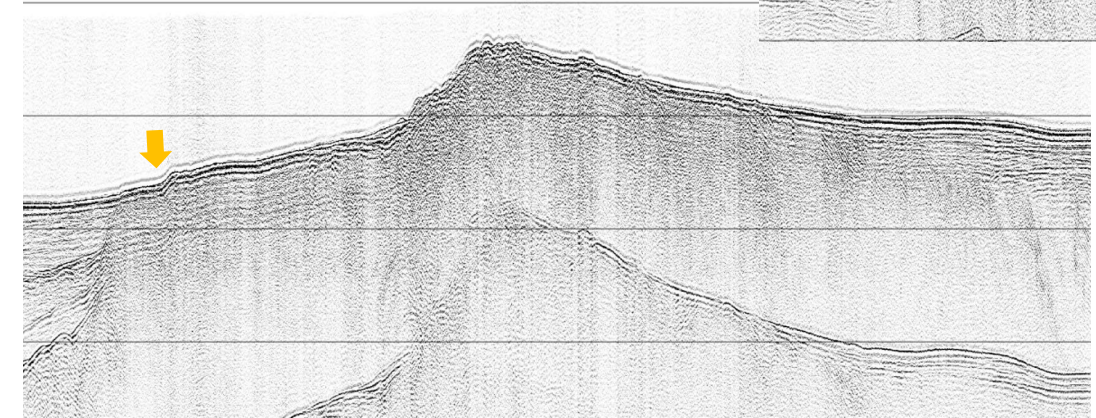
N18n



N19s

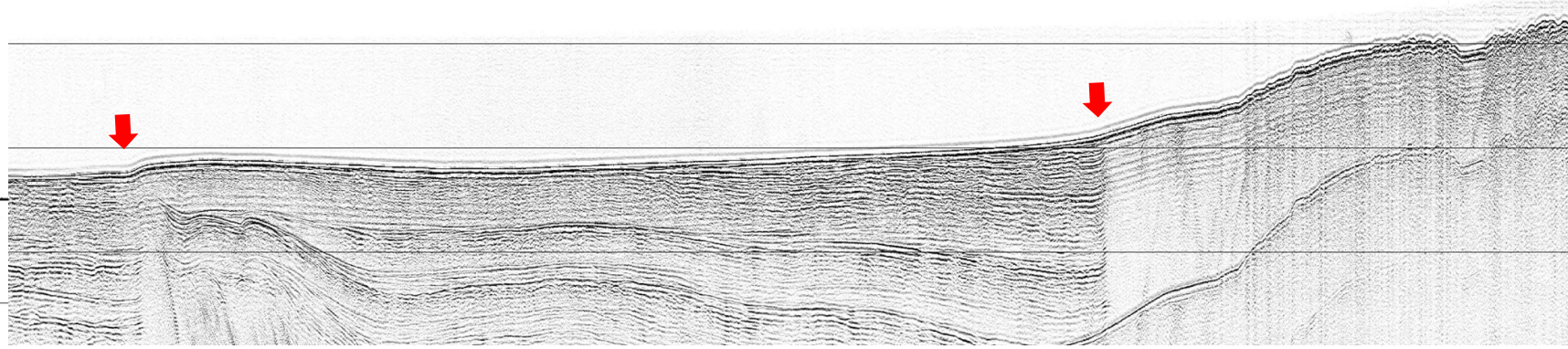


N19n

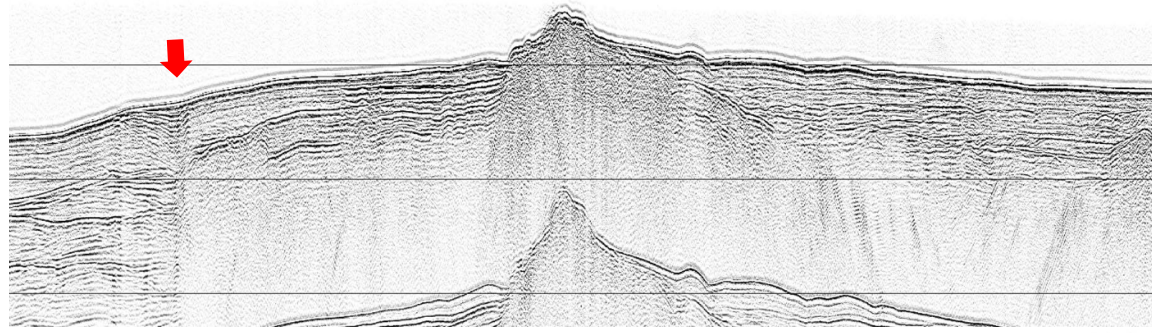


NW←

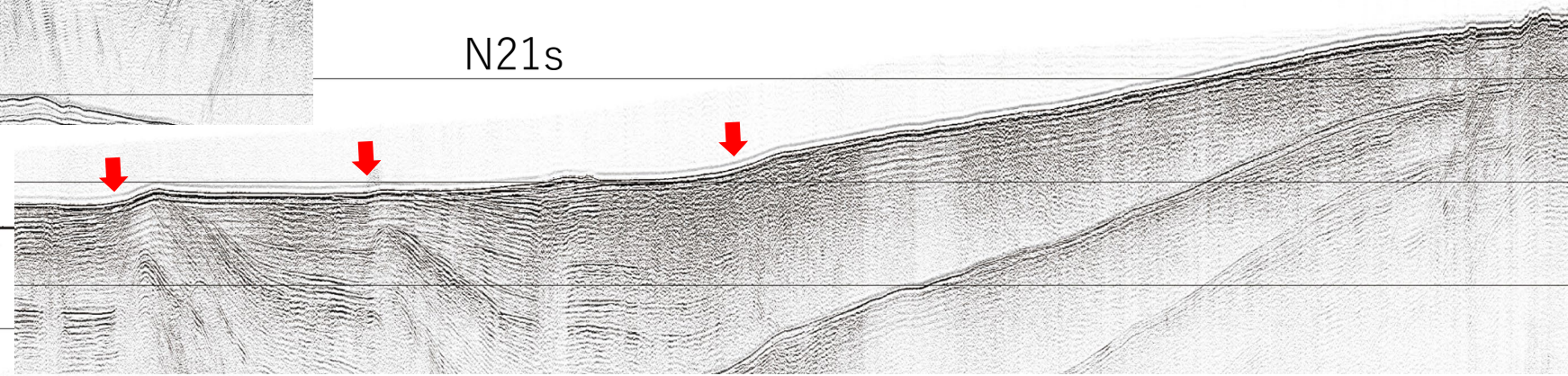
N20s



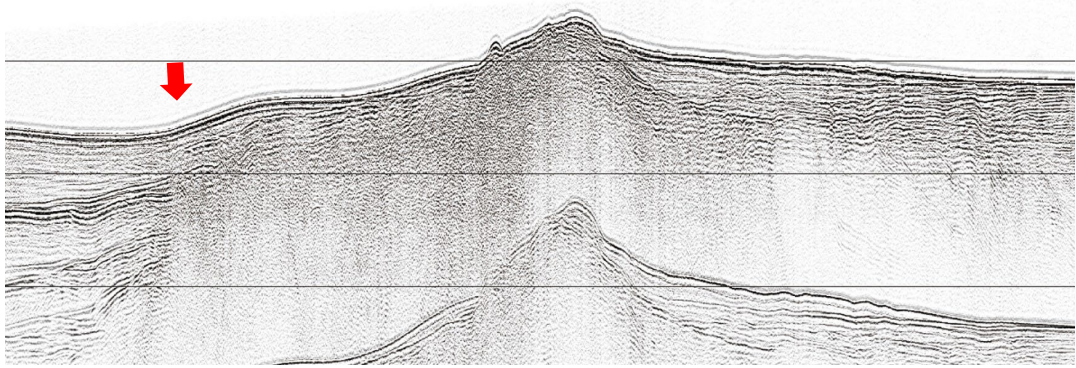
N20n



N21s



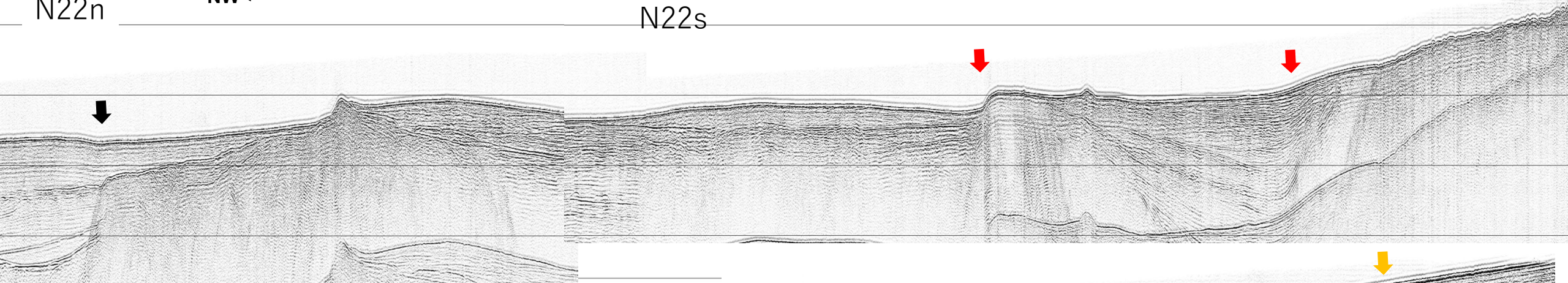
N21n



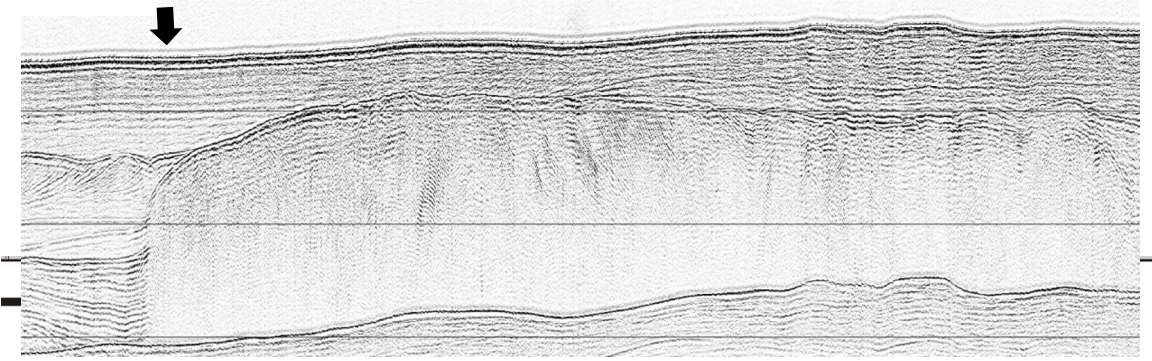
N22n

NW ←

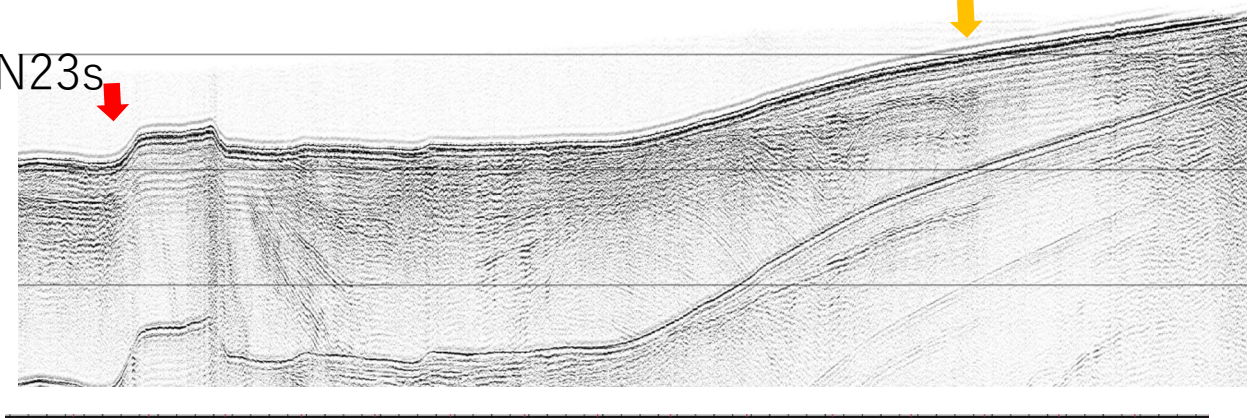
N22s



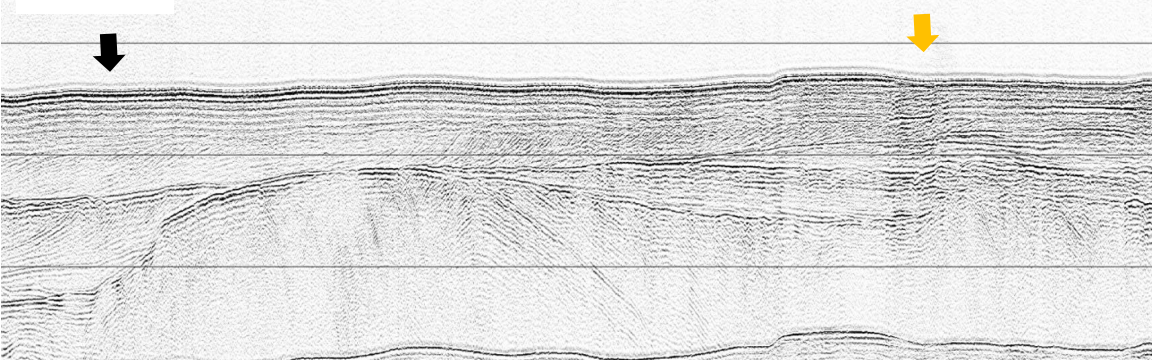
N23n



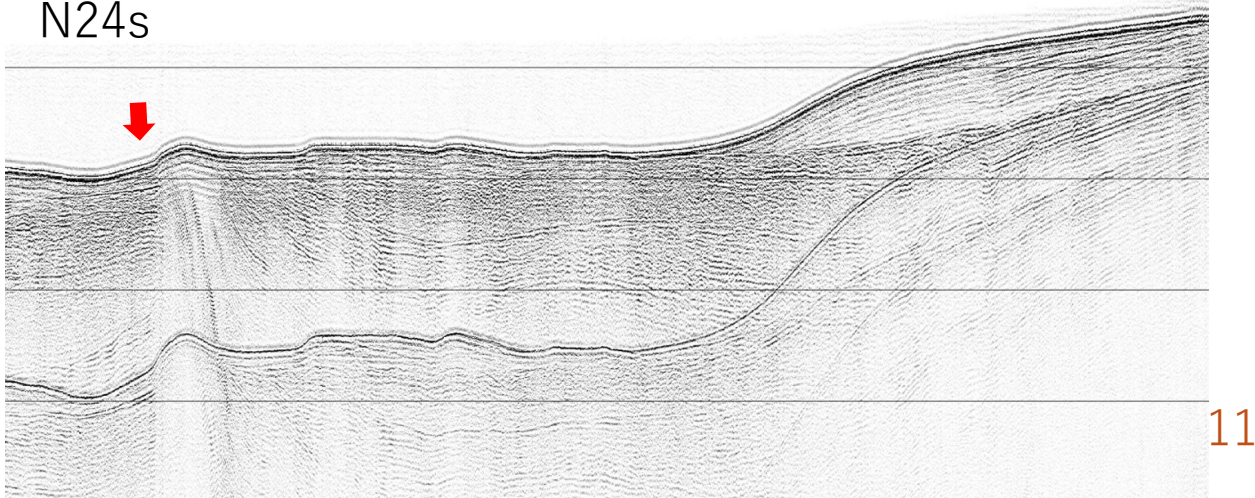
N23s

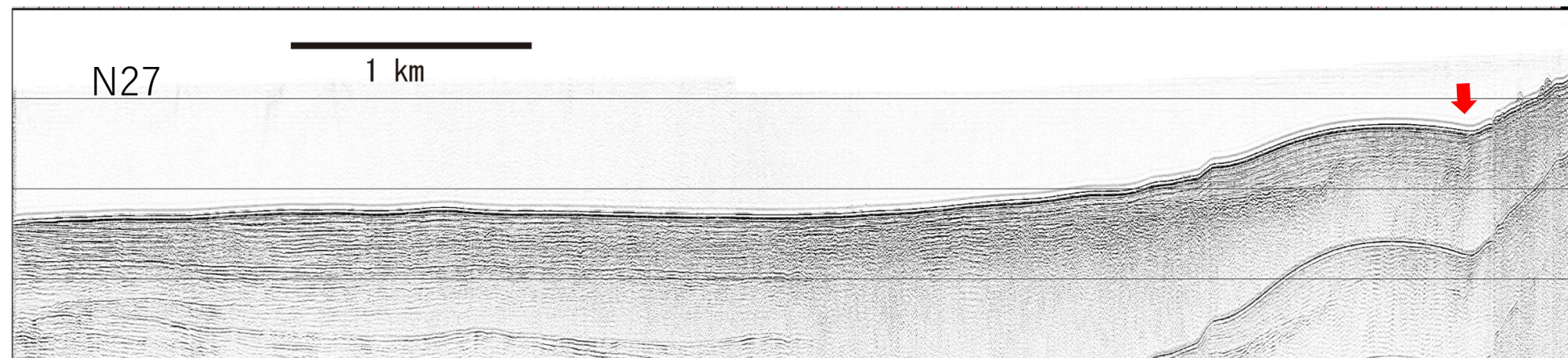
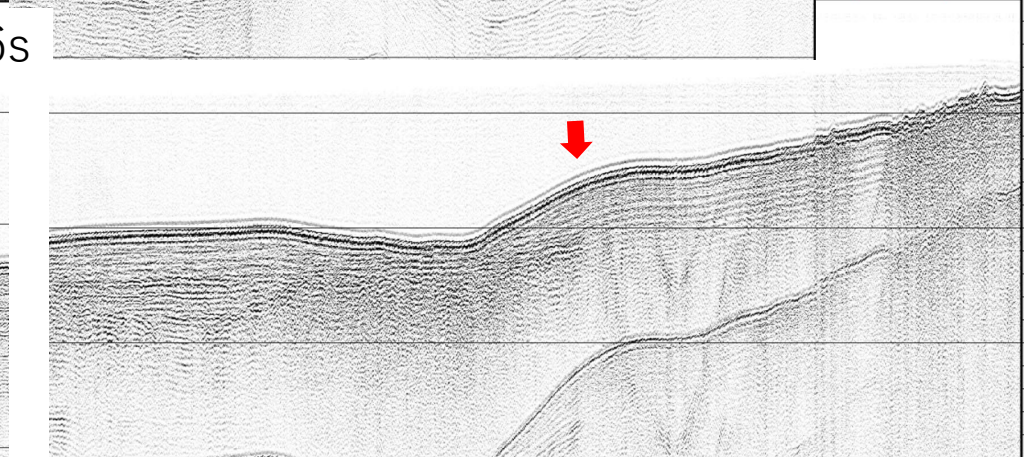
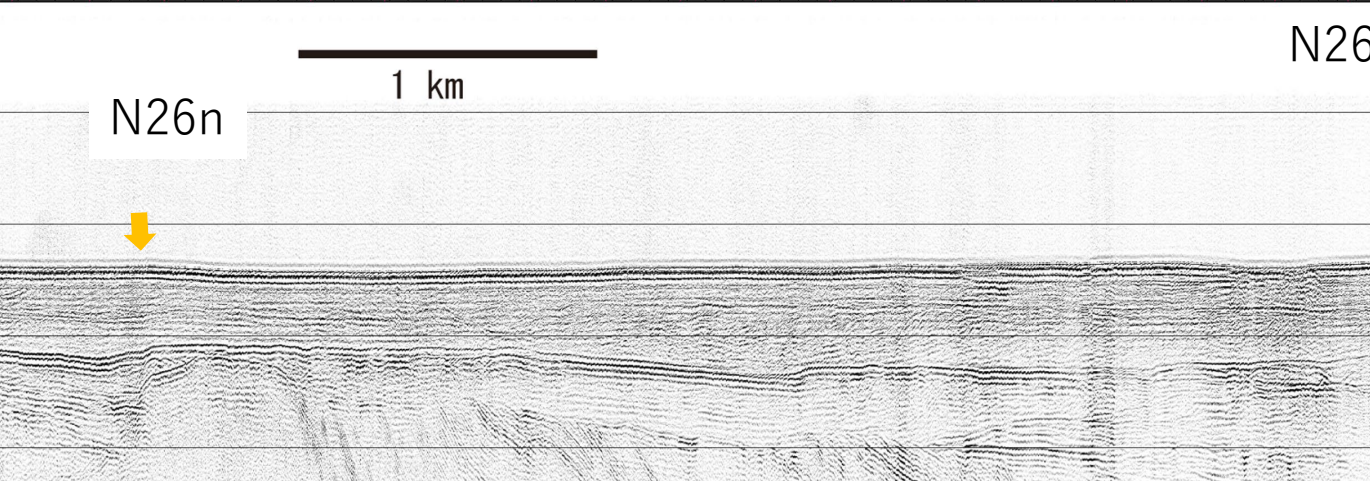
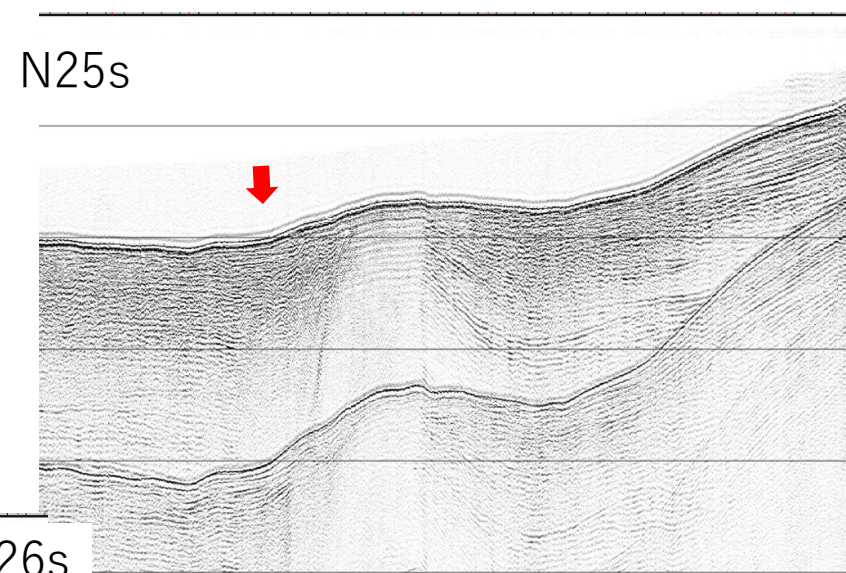
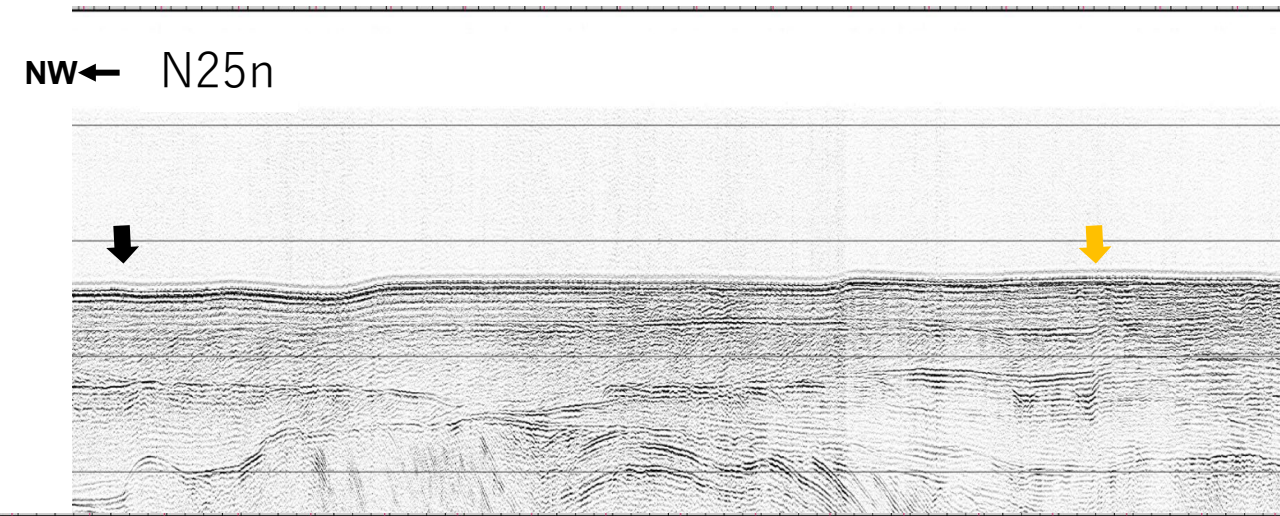


N24n



N24s



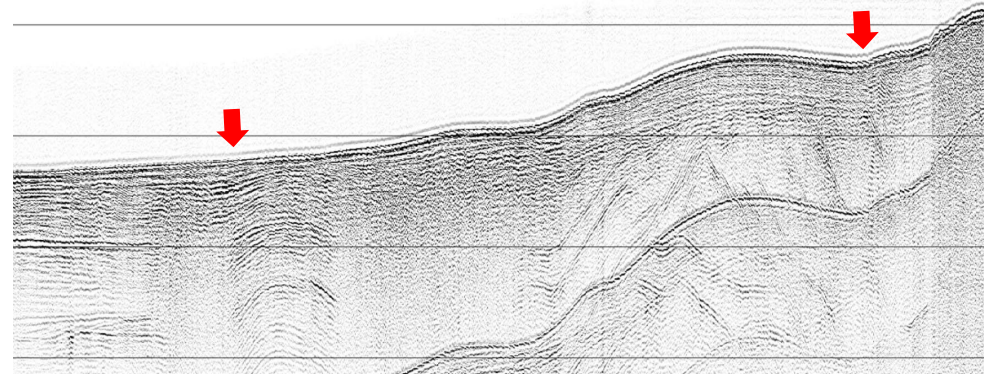


1 km

1 km

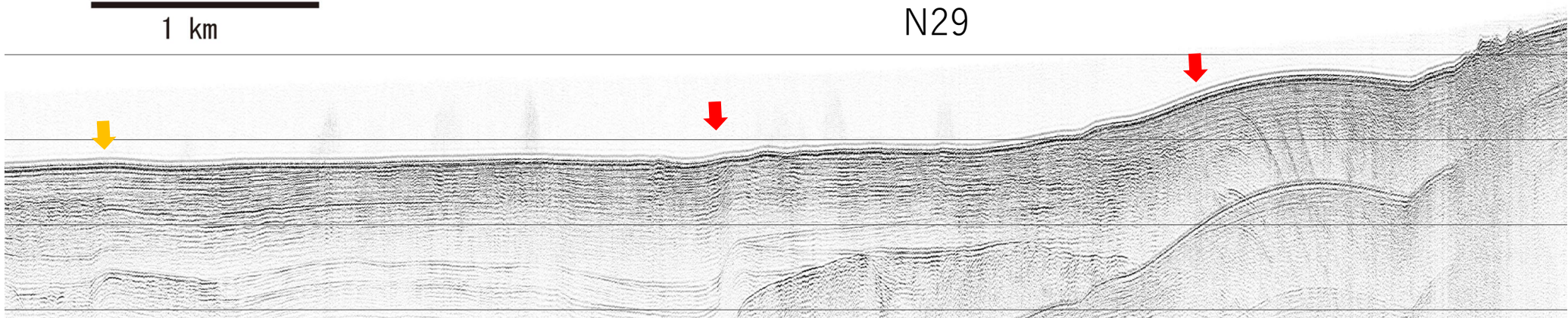
NW ←

N28



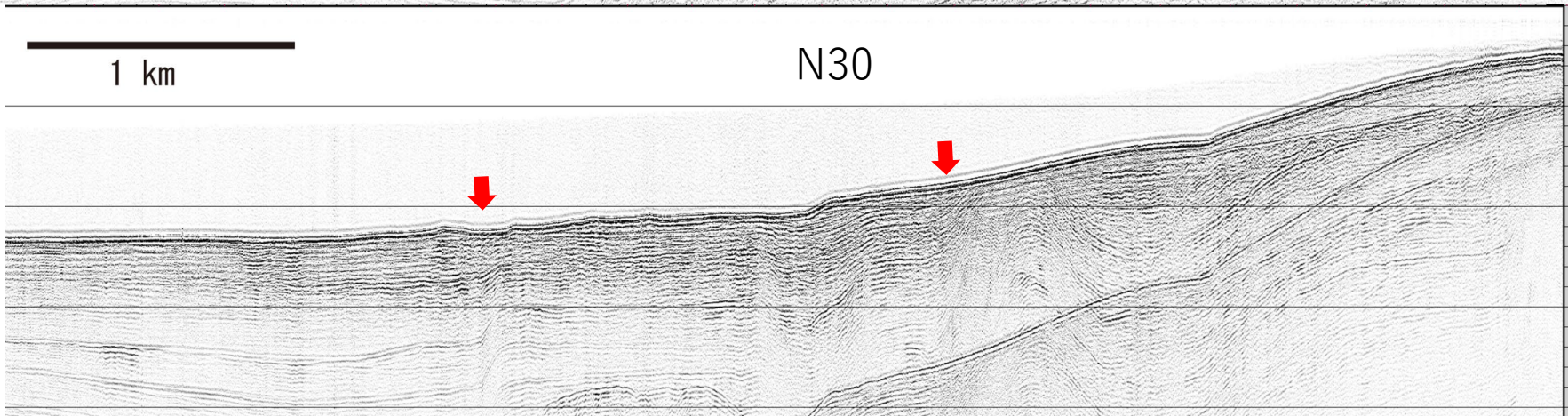
1 km

N29



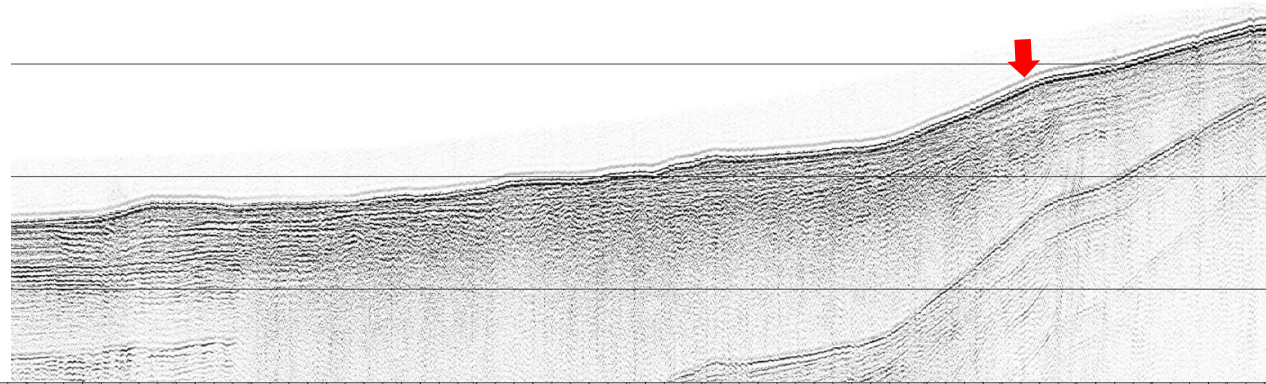
1 km

N30



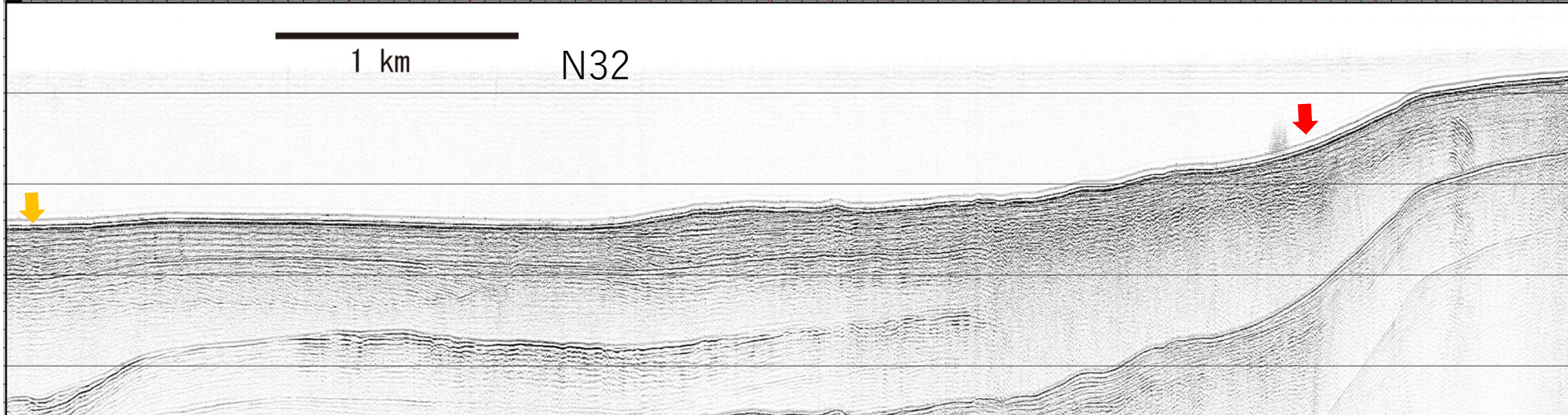
NW ←

N31



1 km

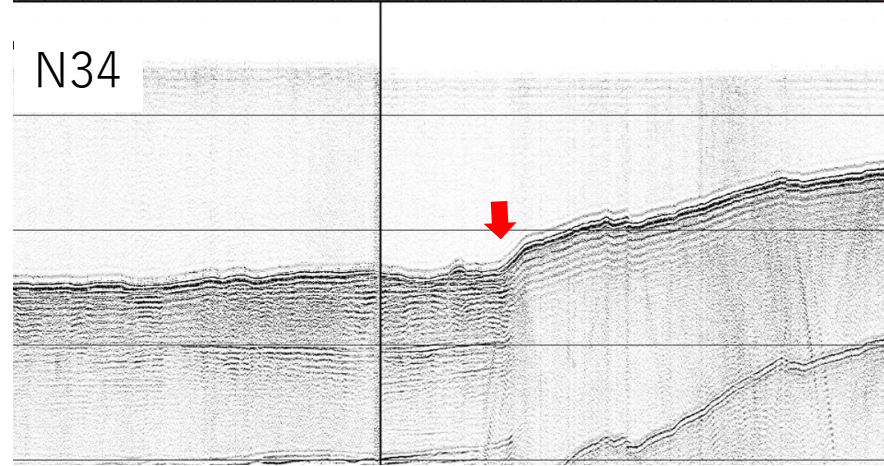
N32

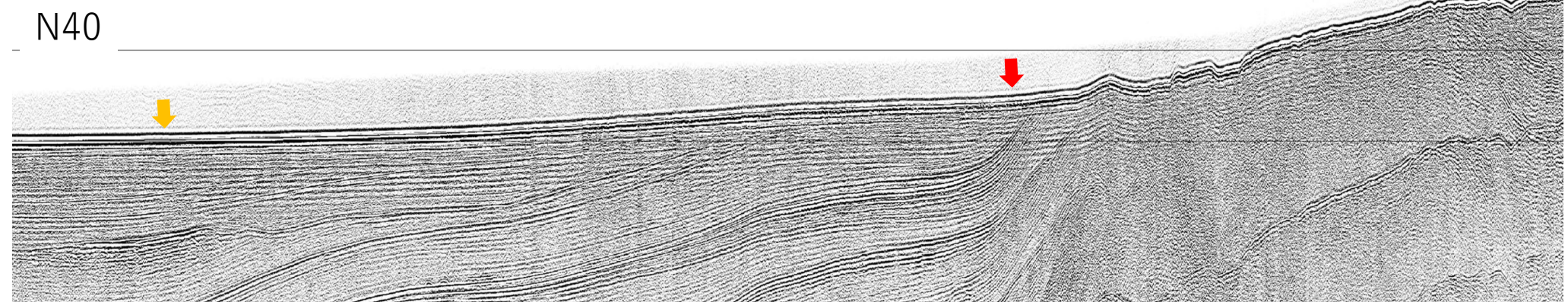
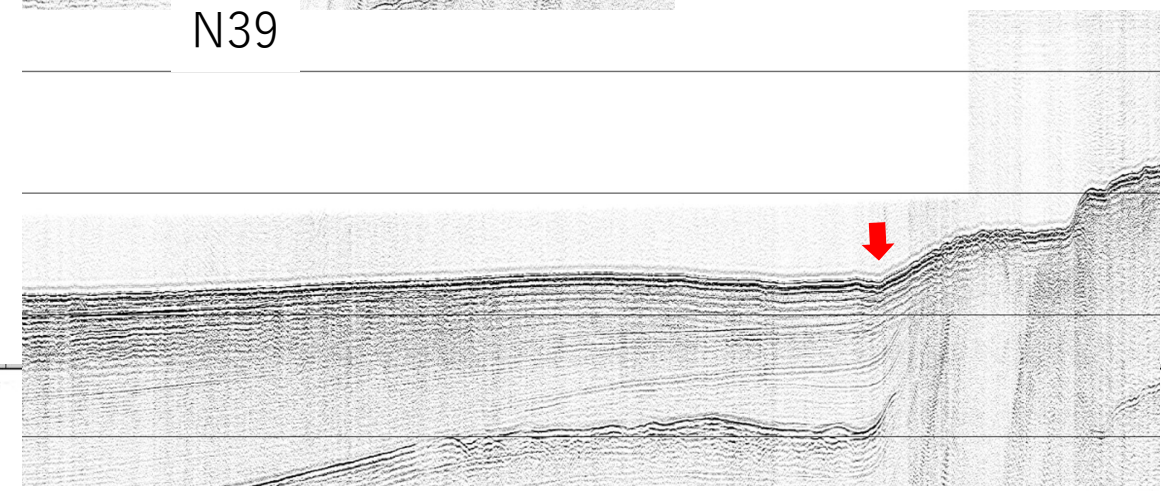
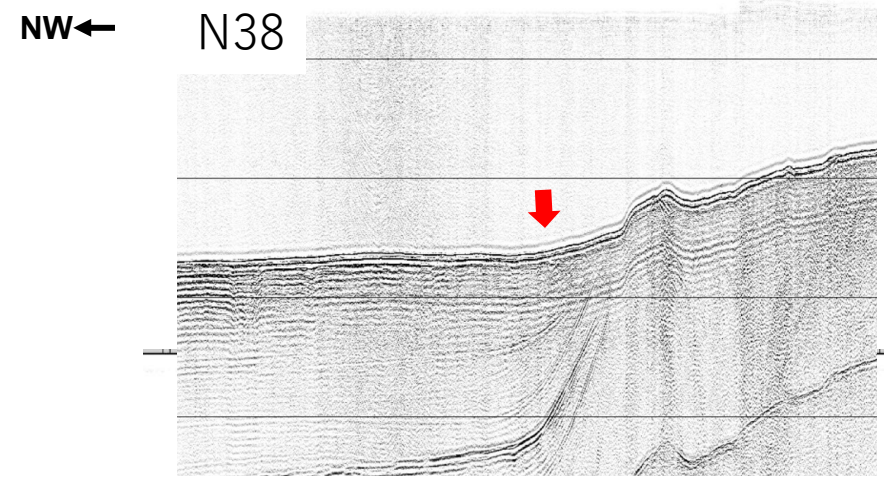
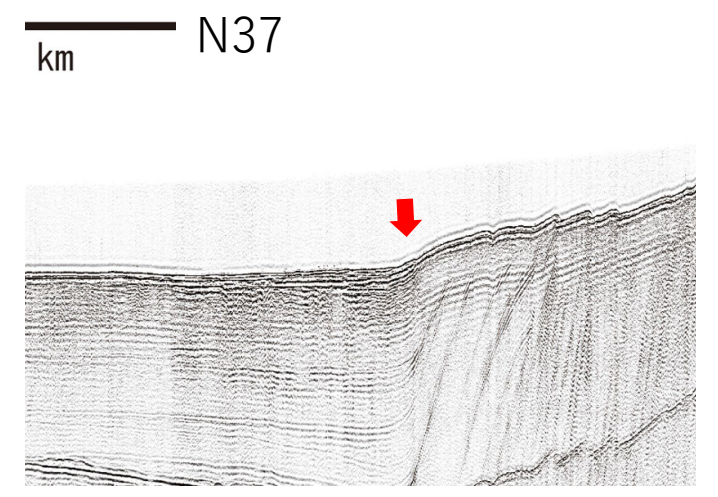
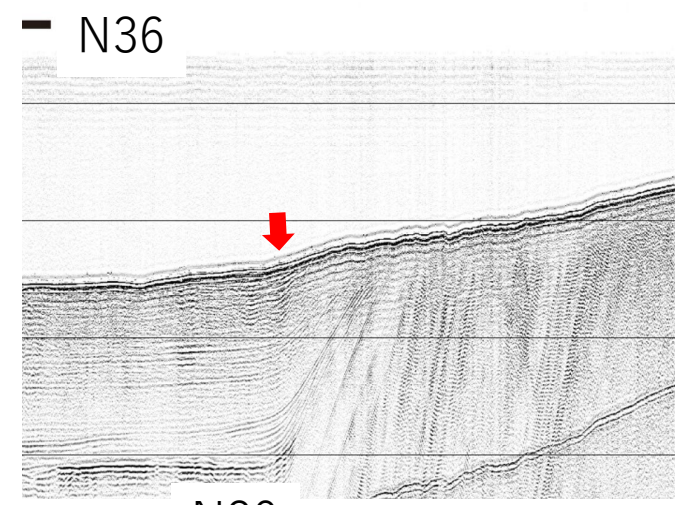
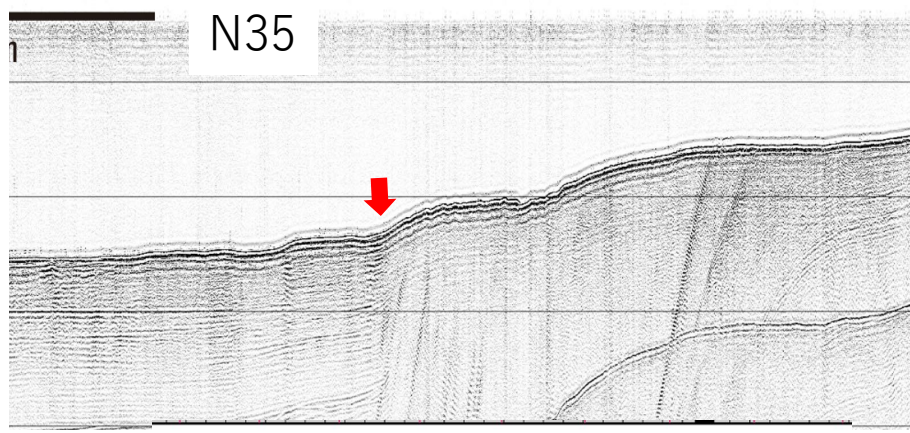


N33



N34





文献

- ・井上卓彦・岡村行信（2010）：能登半島北部周辺20万分の1 海域地質図及び説明書, 海陸シームレス地質情報集「能登半島北部沿岸域」.