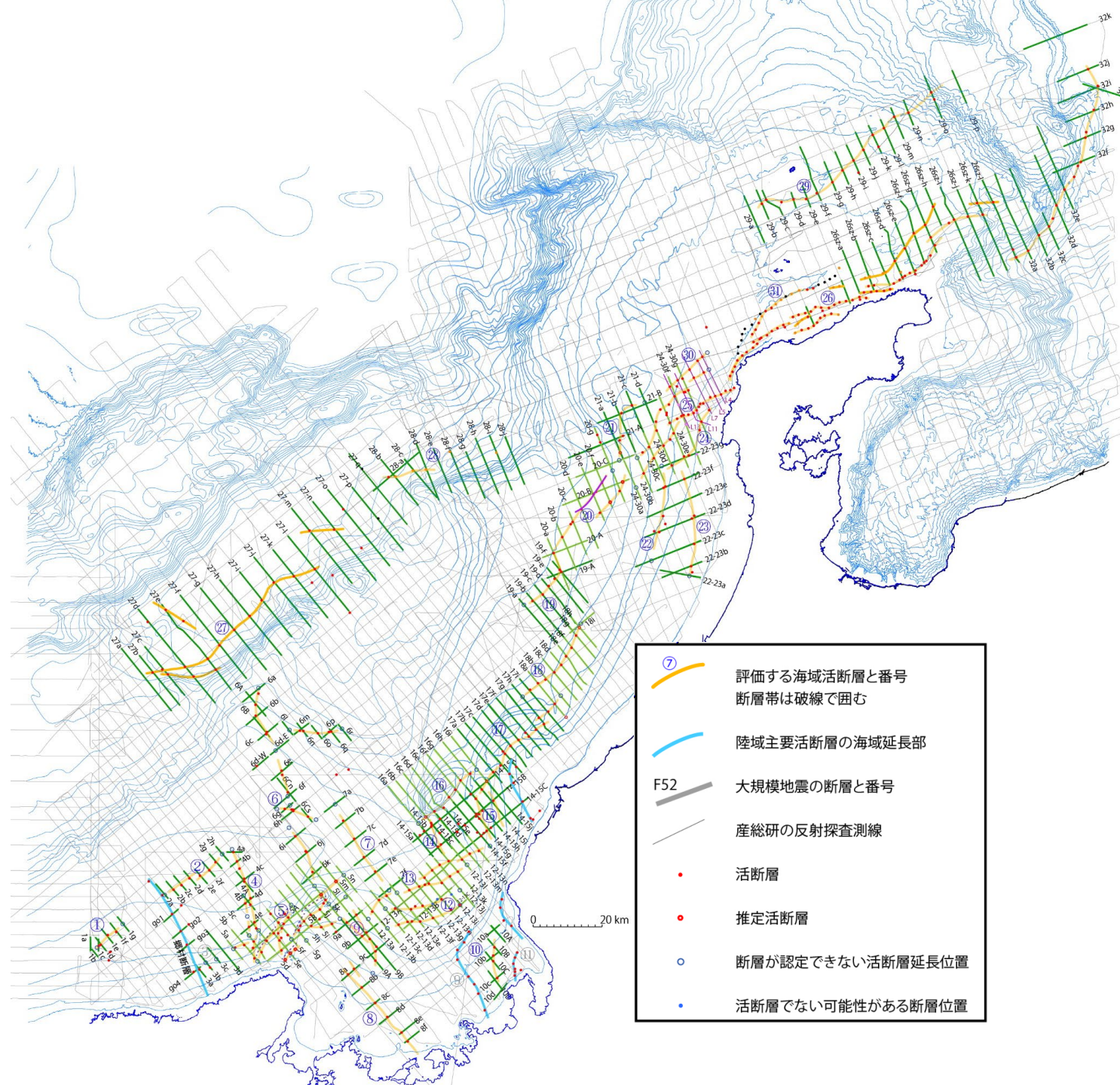


近畿－北陸沖海域活断層案及び反射断面 (能登半島北西沖)

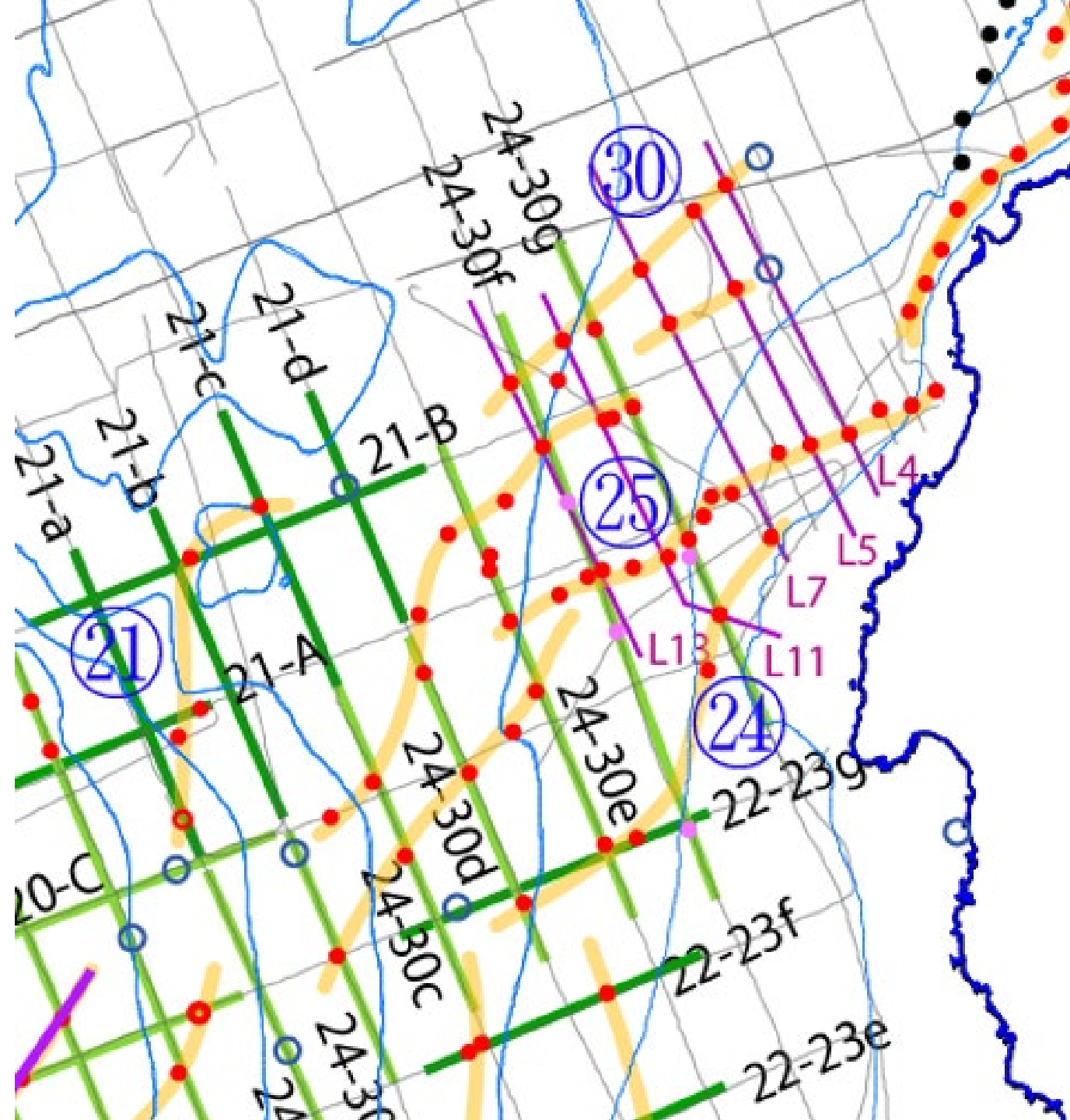
2024/2/2

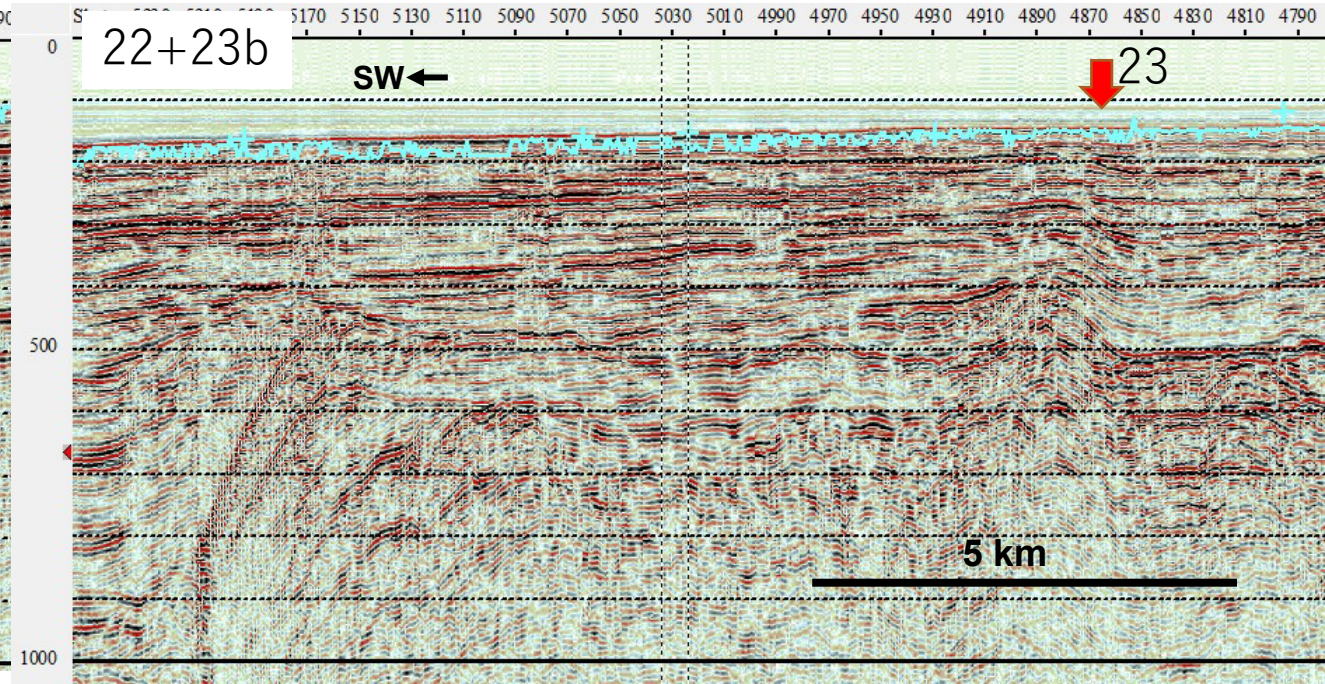
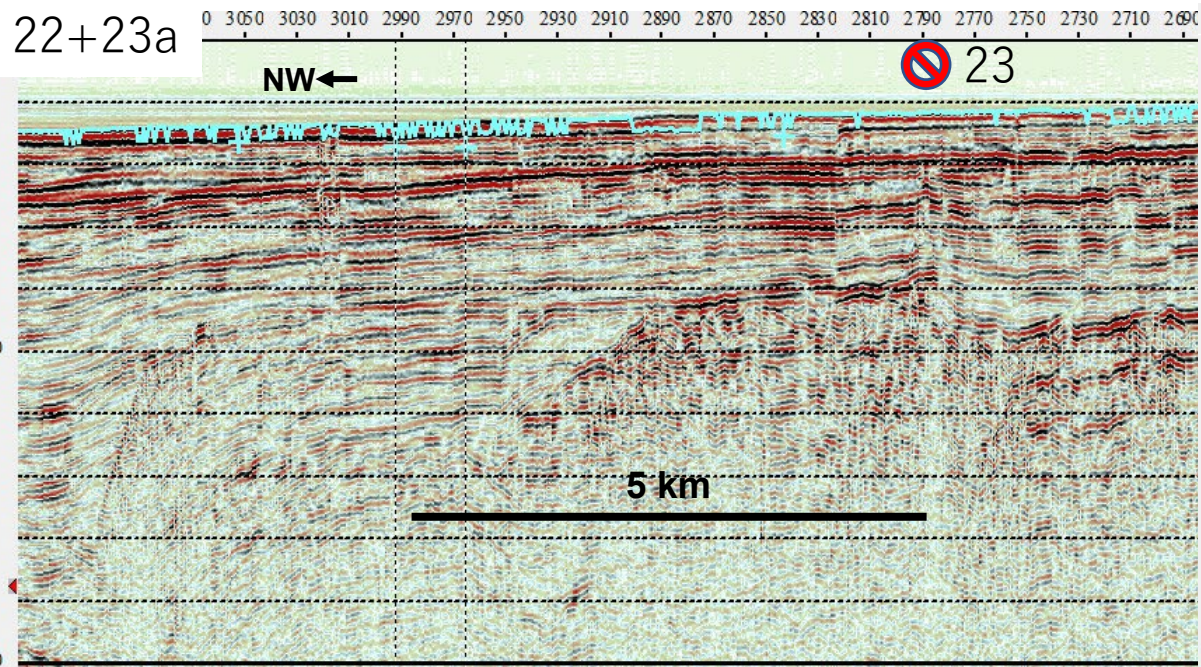
産業技術総合研究所
活断層・火山研究部門
岡村行信



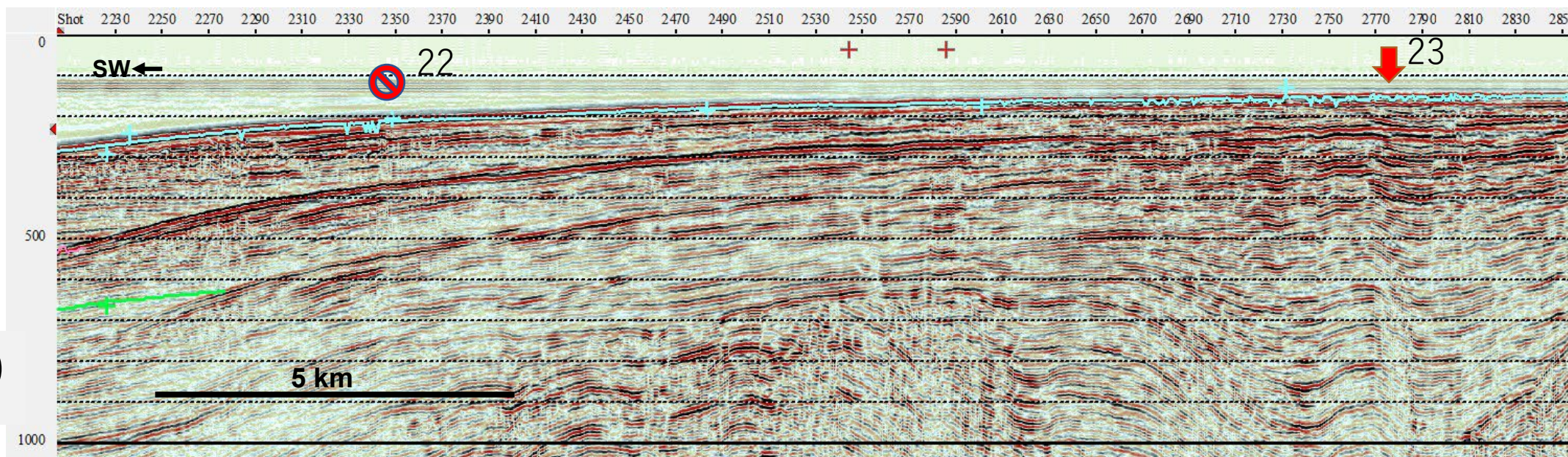
	評価する海域活断層と番号 断層帯は破線で囲む
	陸域主要活断層の海域延長部
	大規模地震の断層と番号
	産総研の反射探査測線
	活断層
	推定活断層
	断層が認定できない活断層延長位置
	活断層でない可能性がある断層位置

能登半島北西沖
断層及び測線

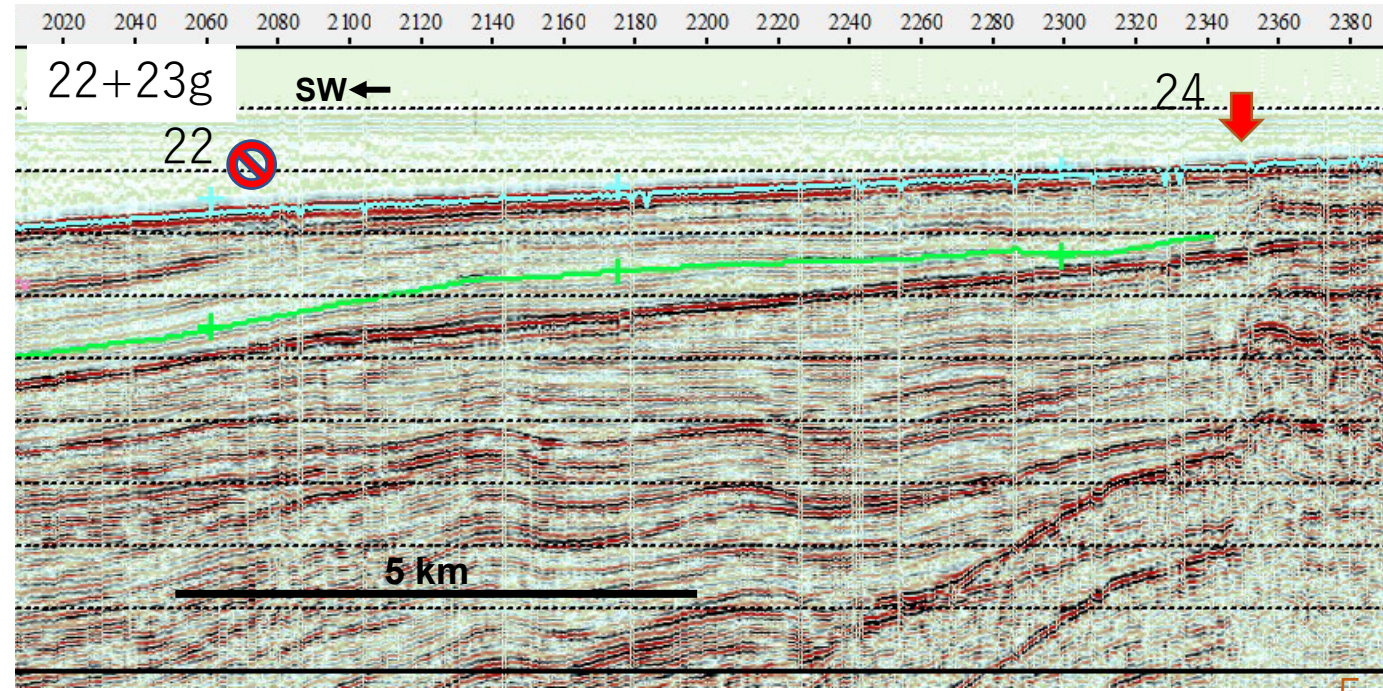
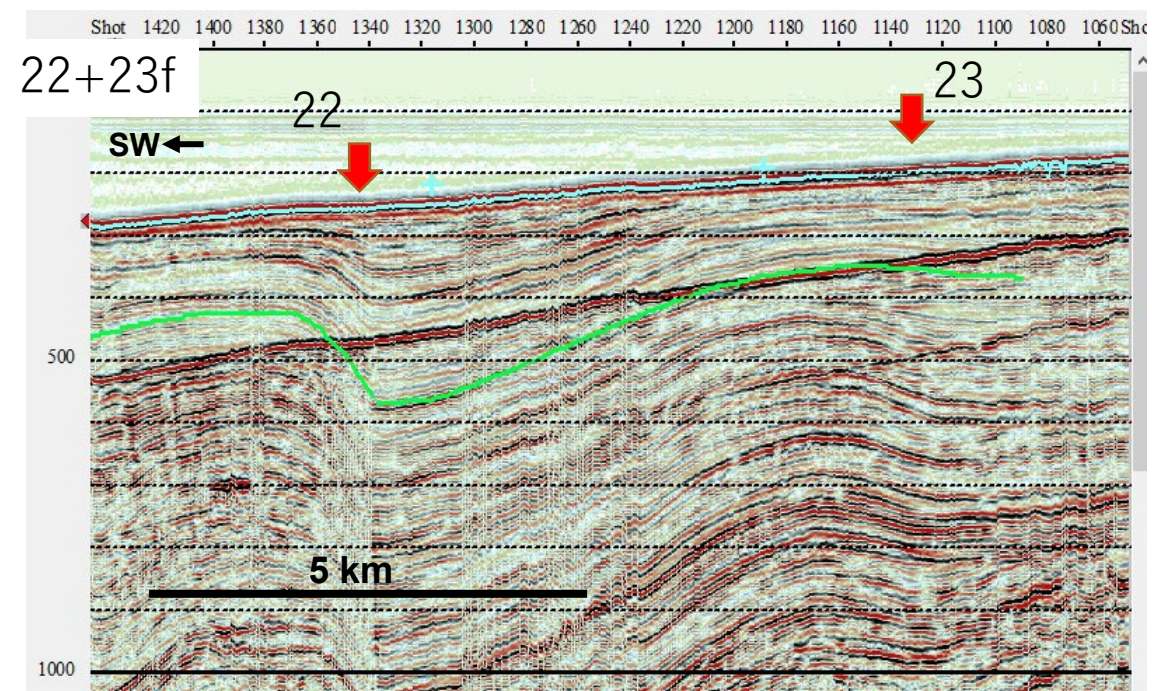
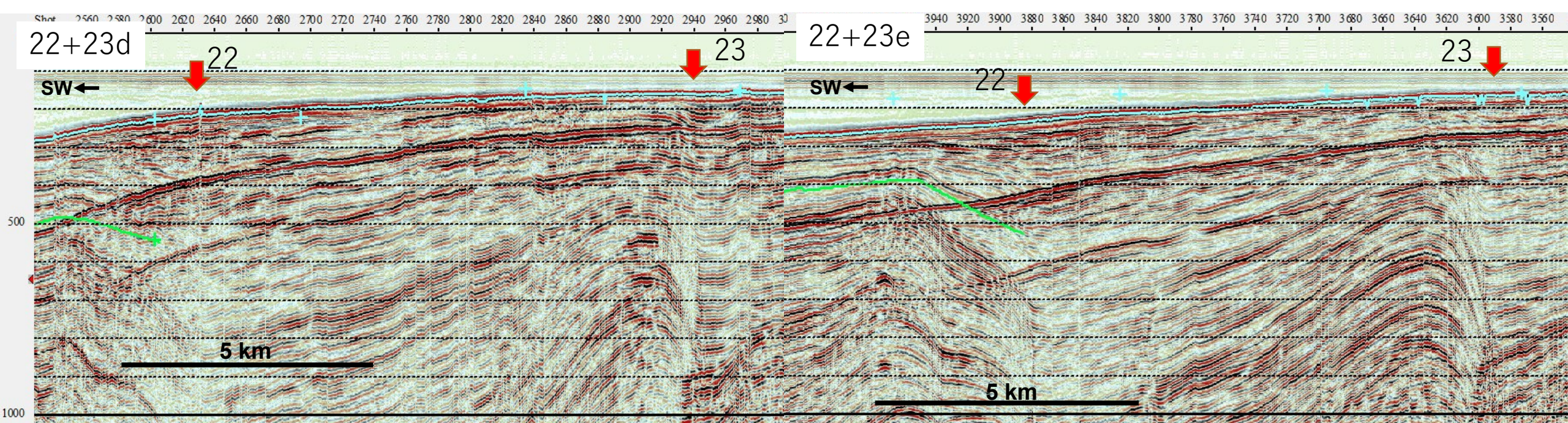


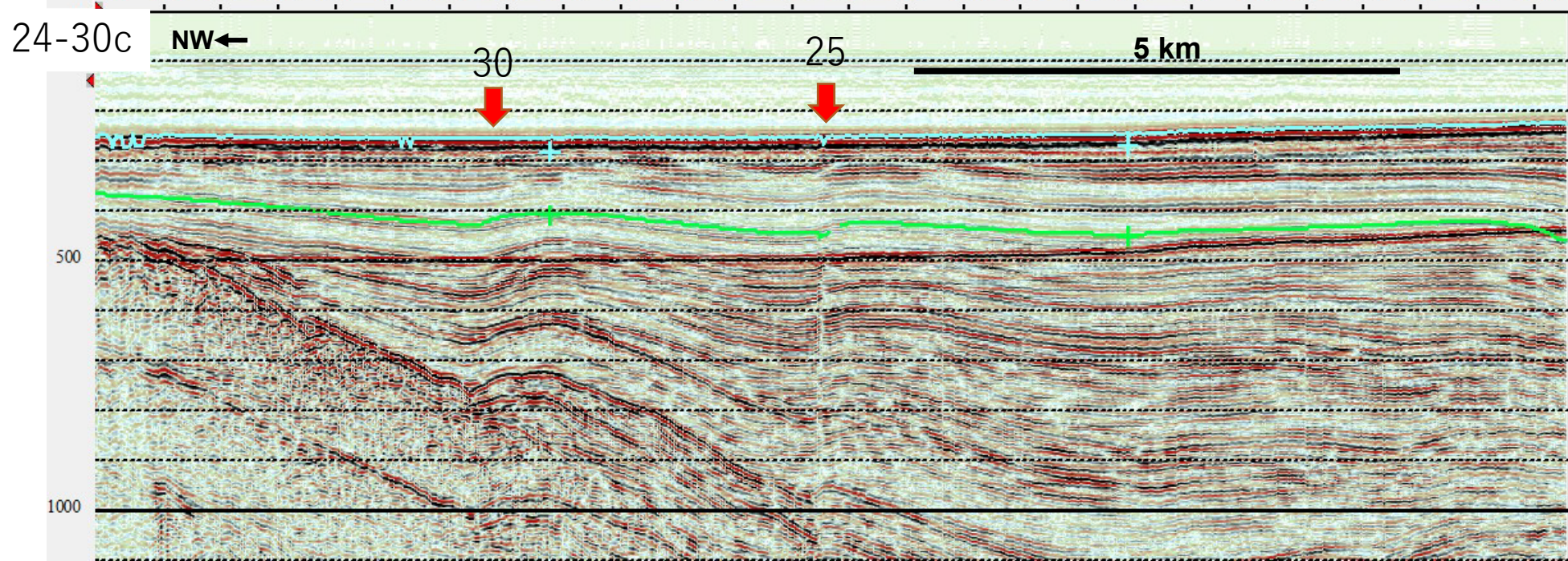
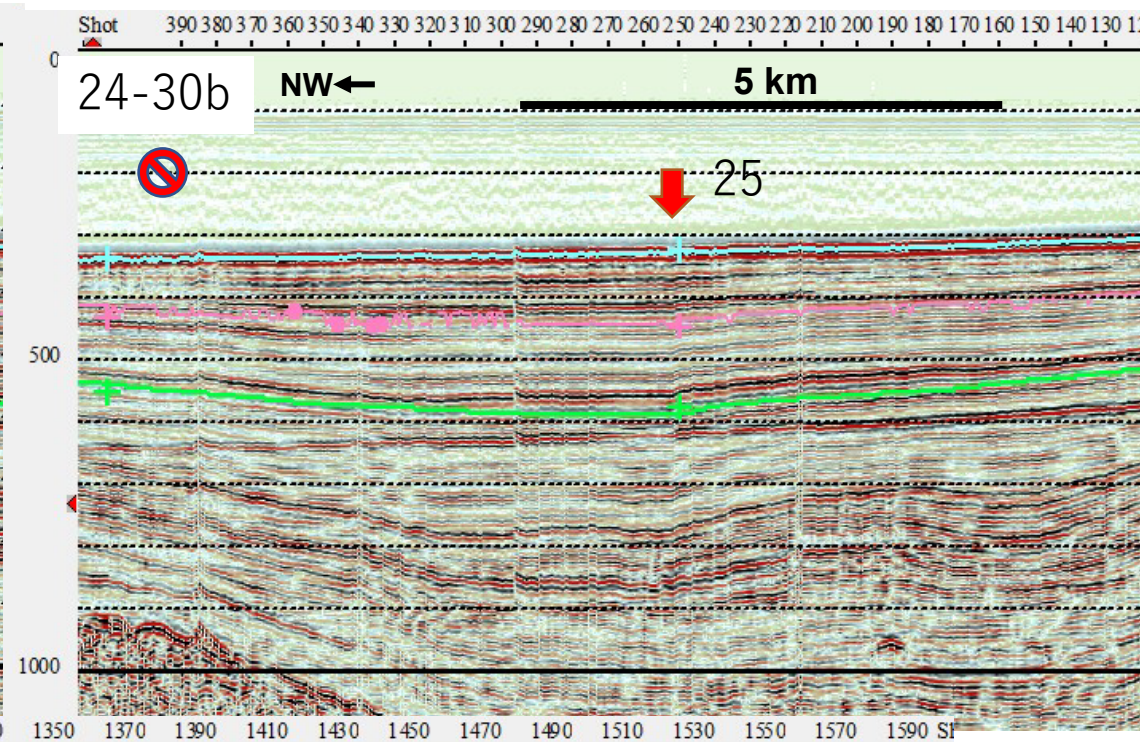
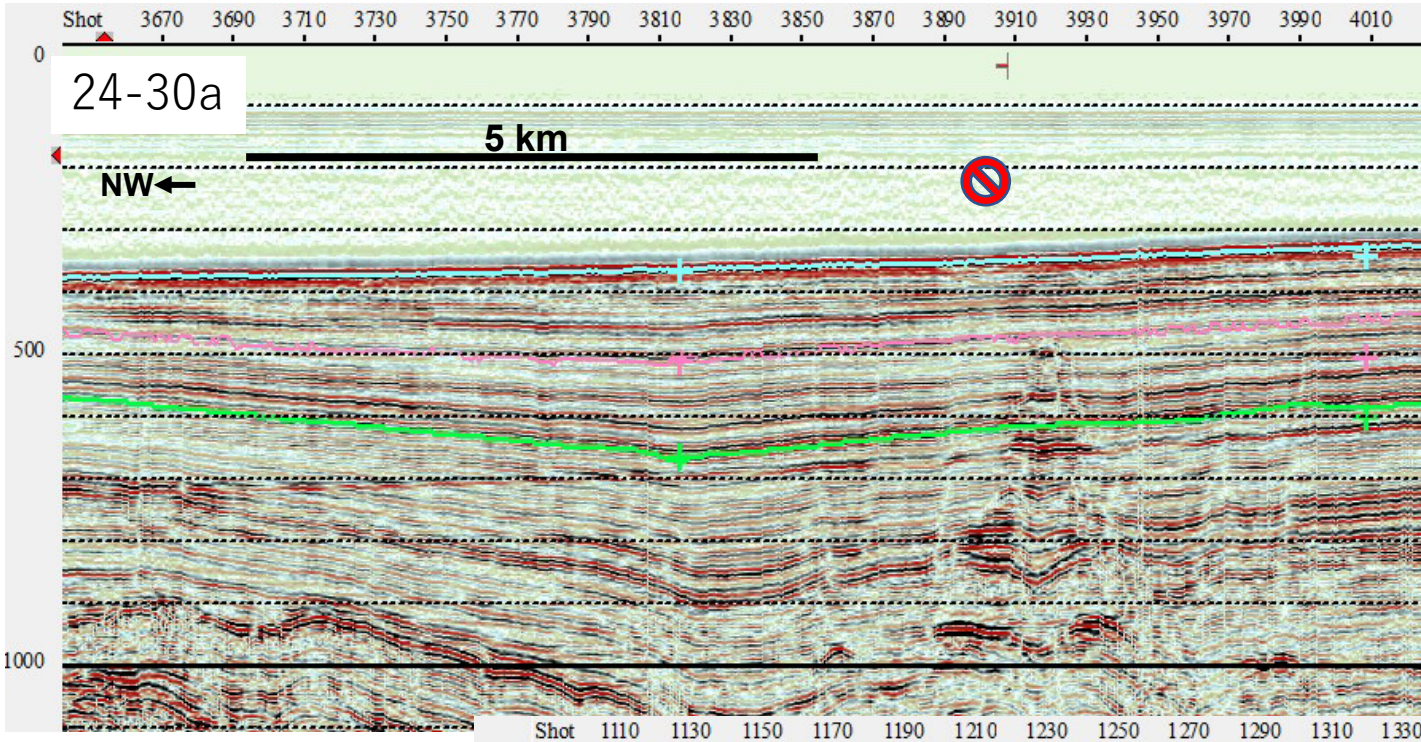


22+23c

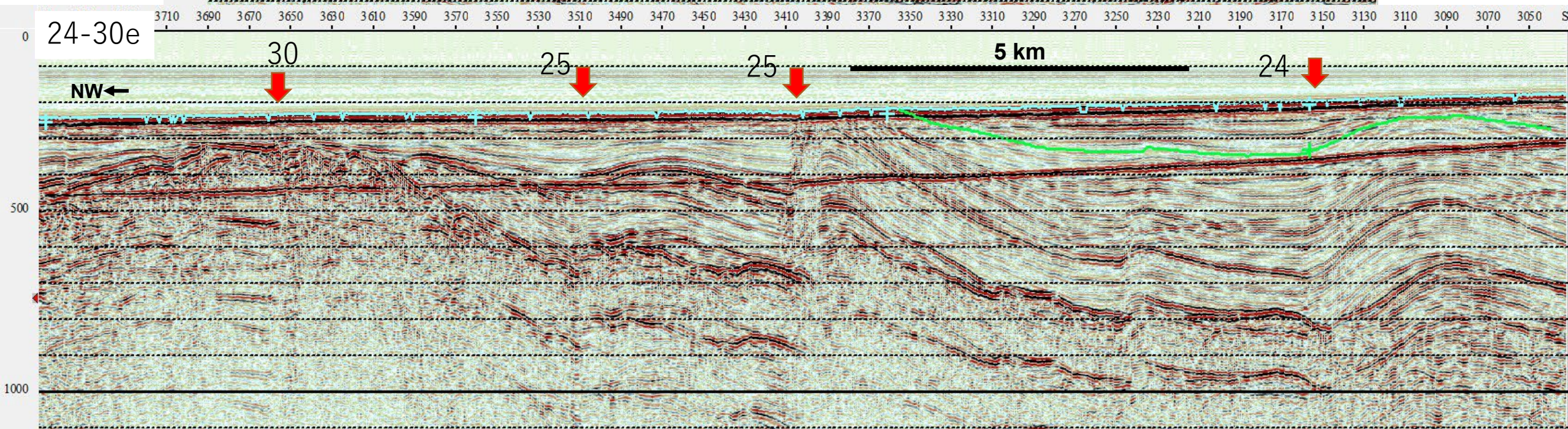
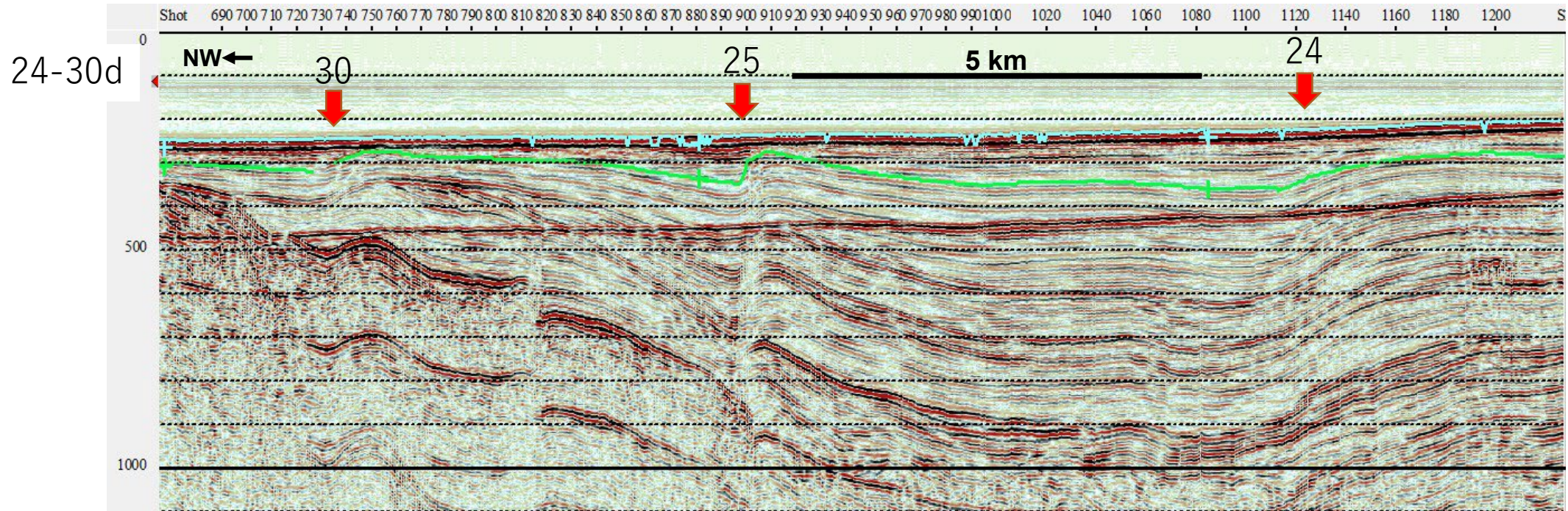


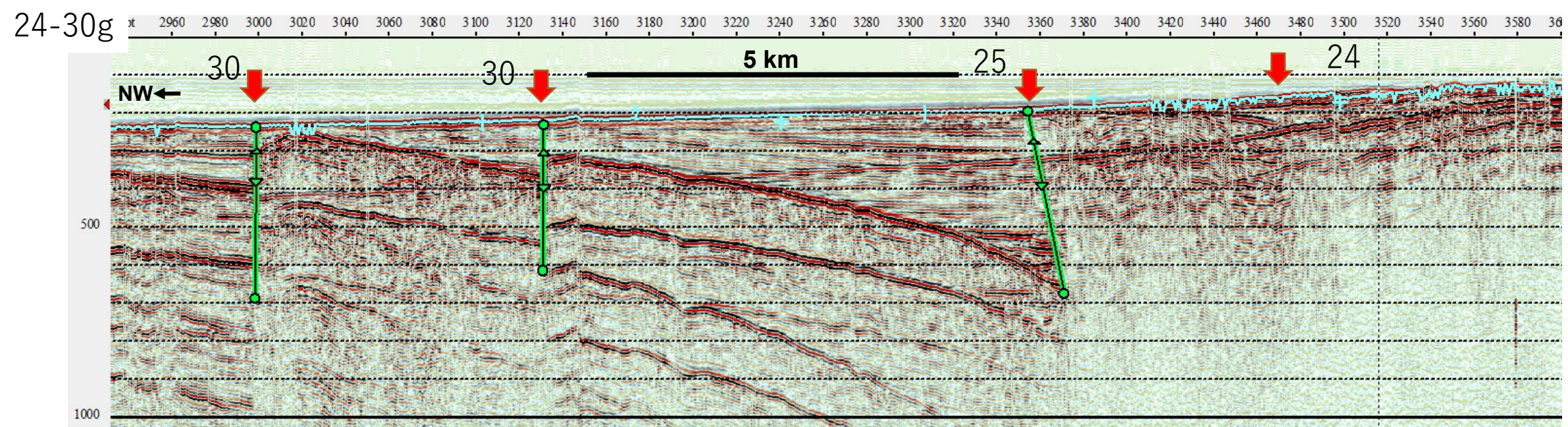
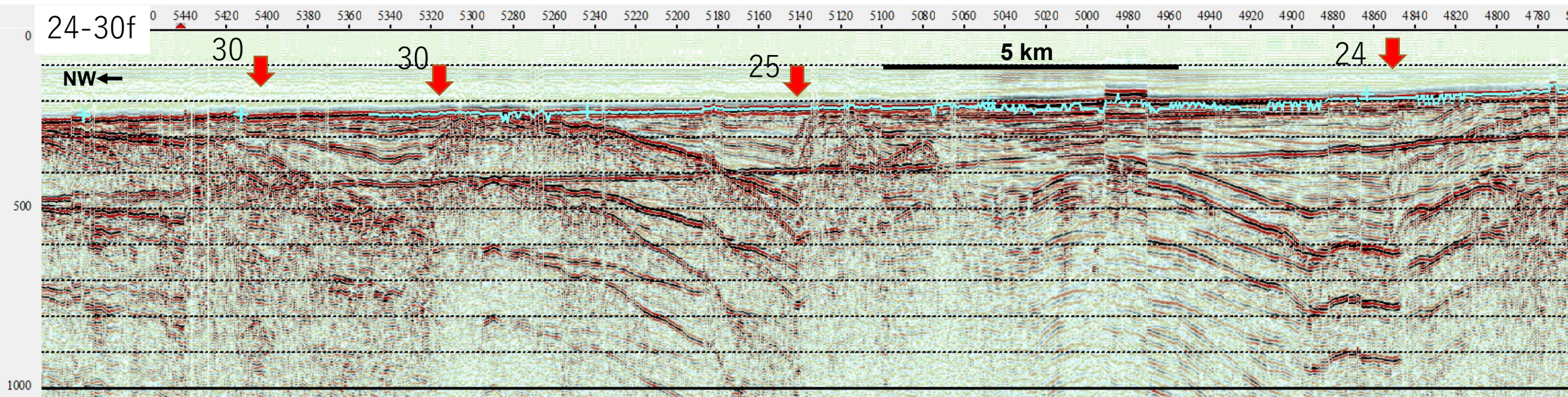
②② + ②③



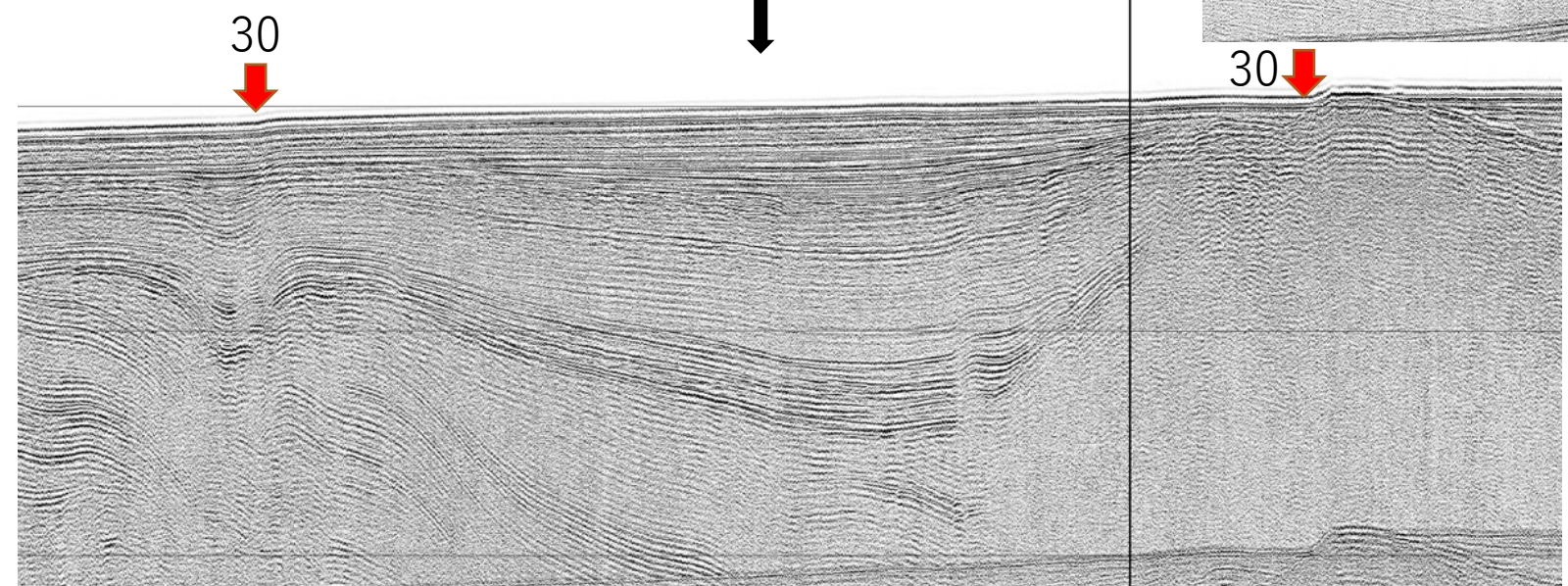
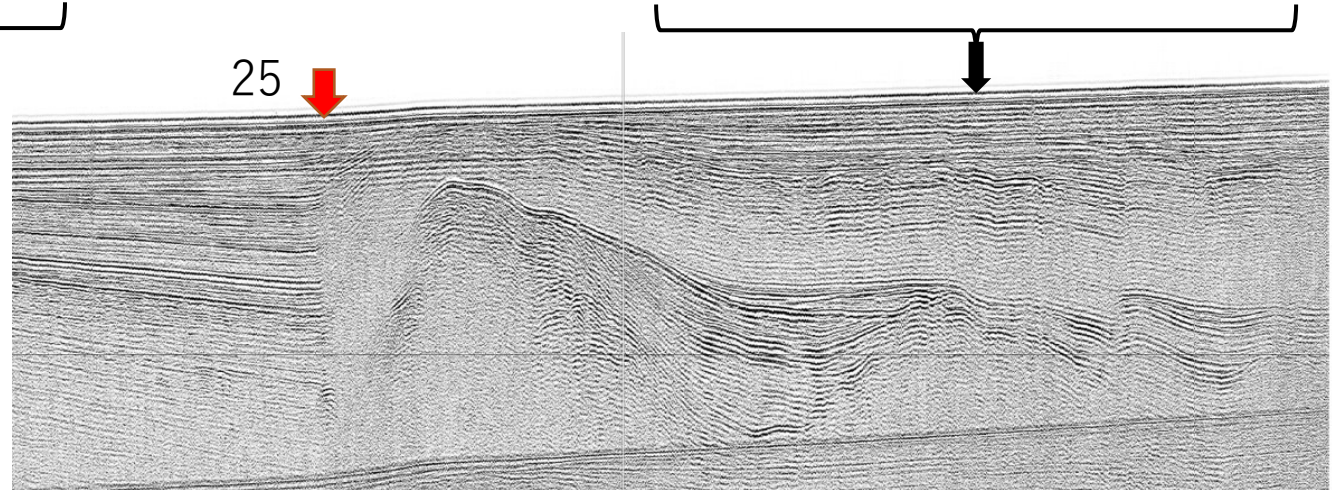
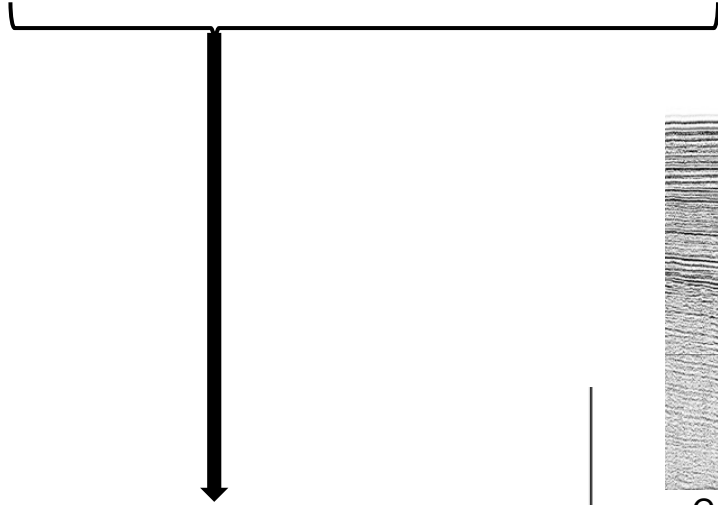
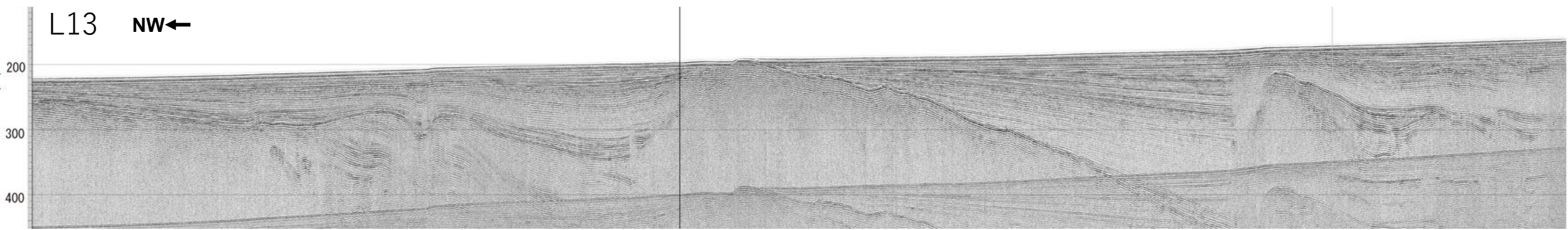


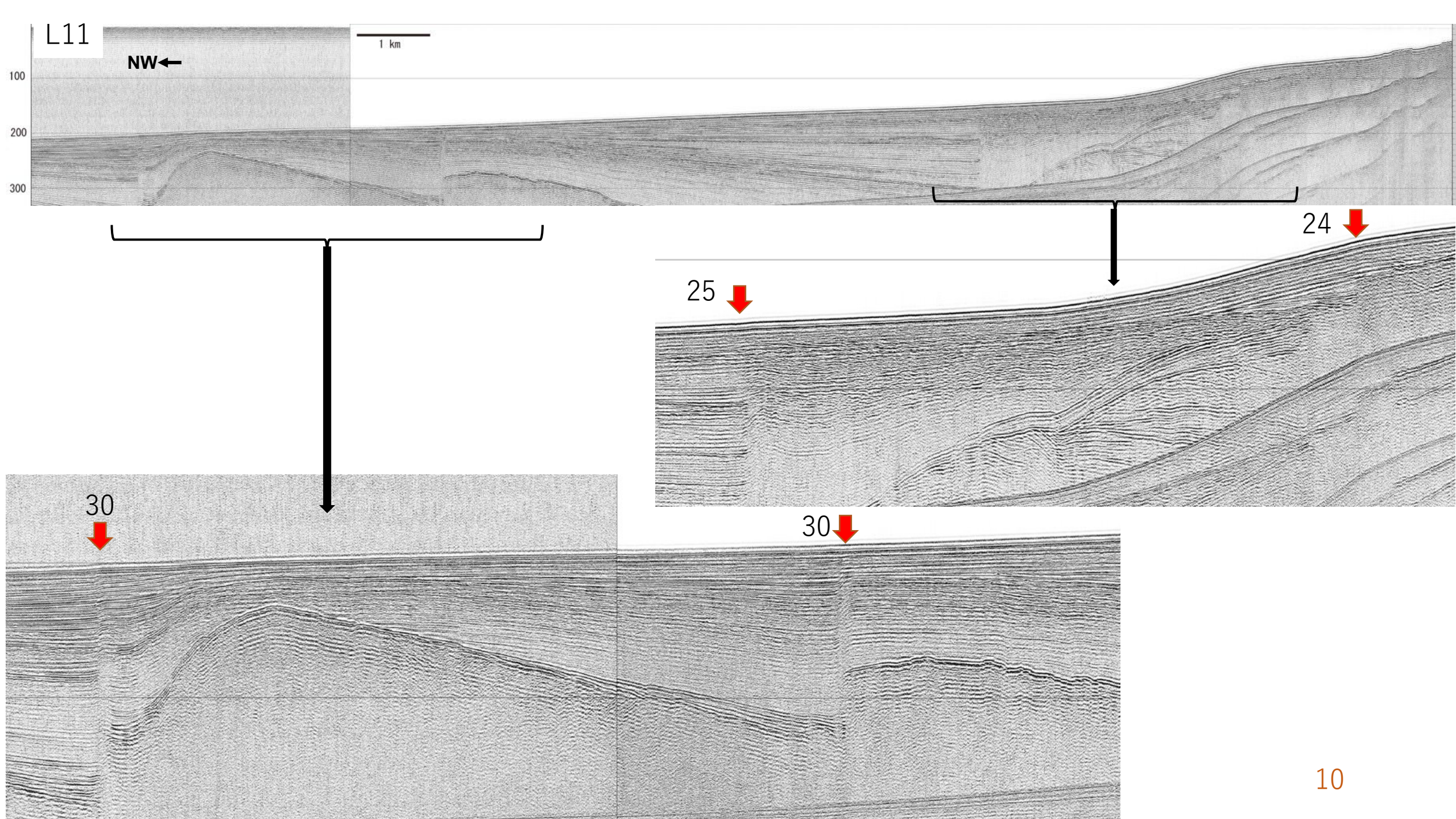
②④ + ③①





L13 NW ←



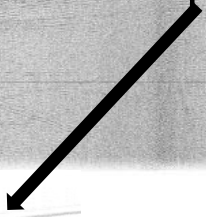


L7

1 km

NW ←

TWT (ms)
100
200
300
400



24 ↓

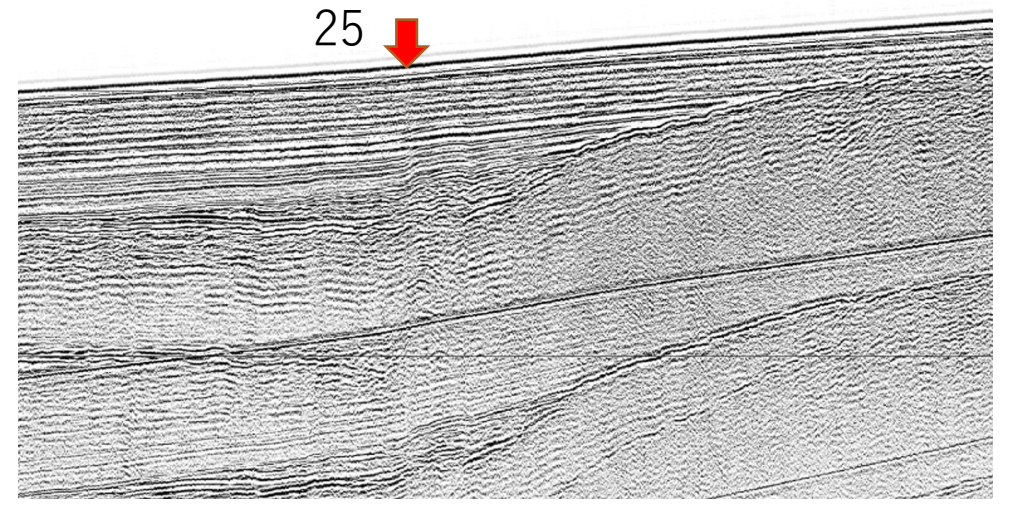
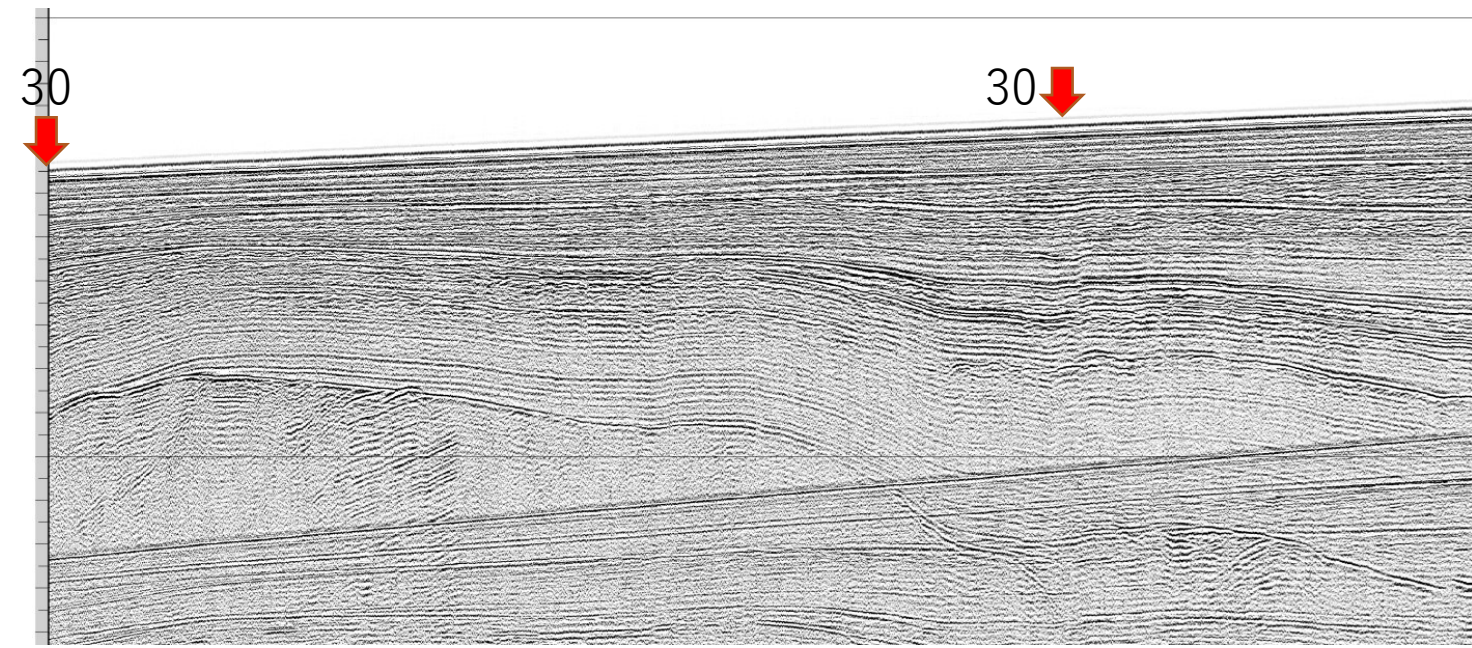
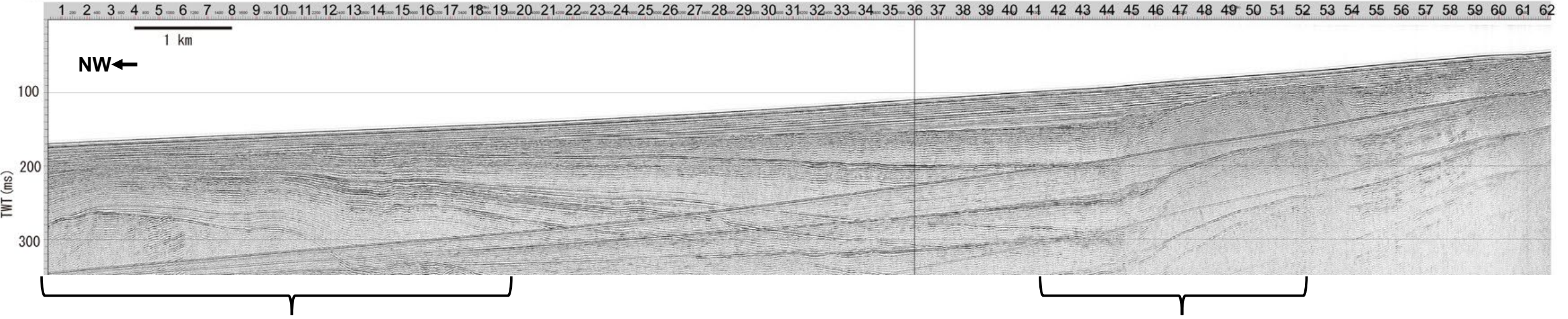
25 ↓

30 ↓

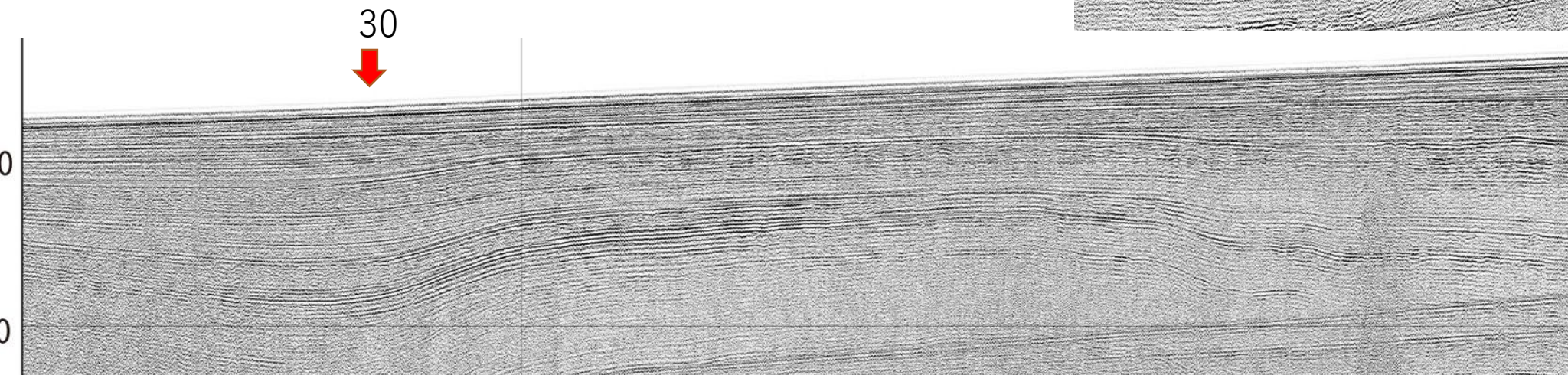
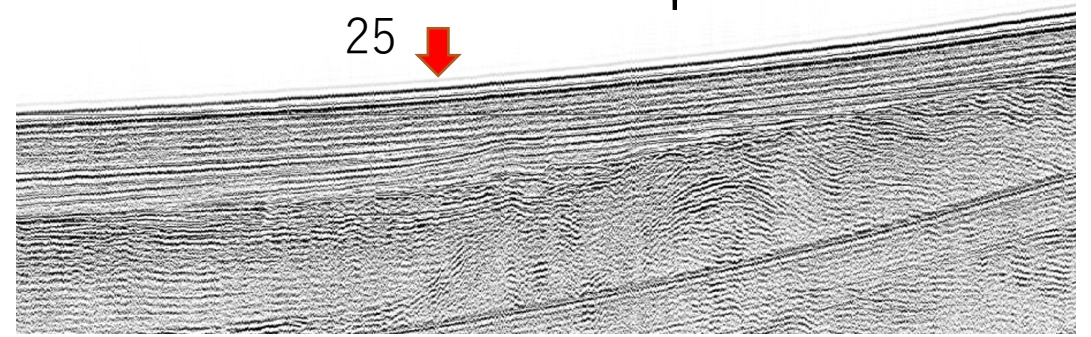
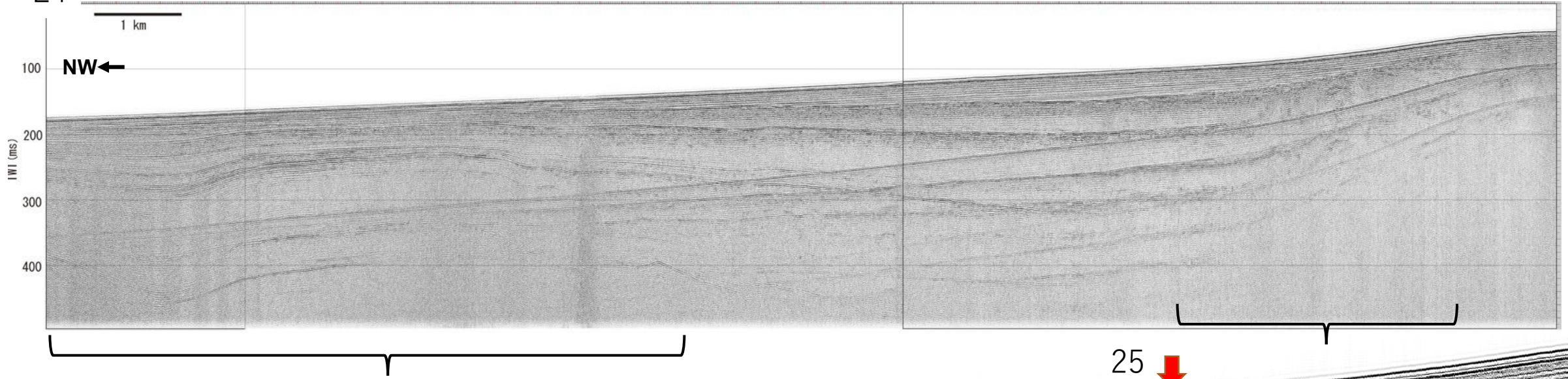
30 ↓

L5

L

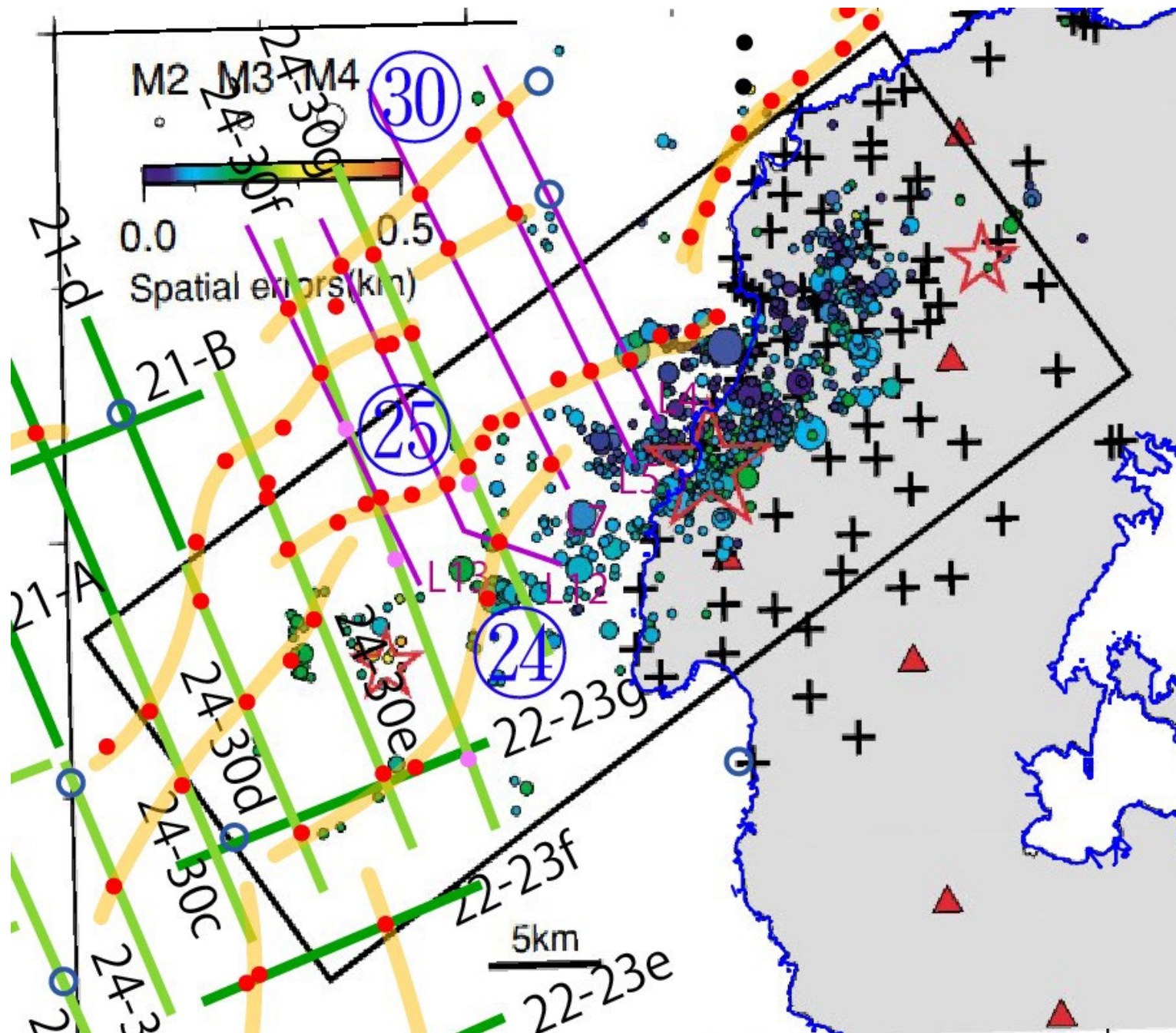


L4



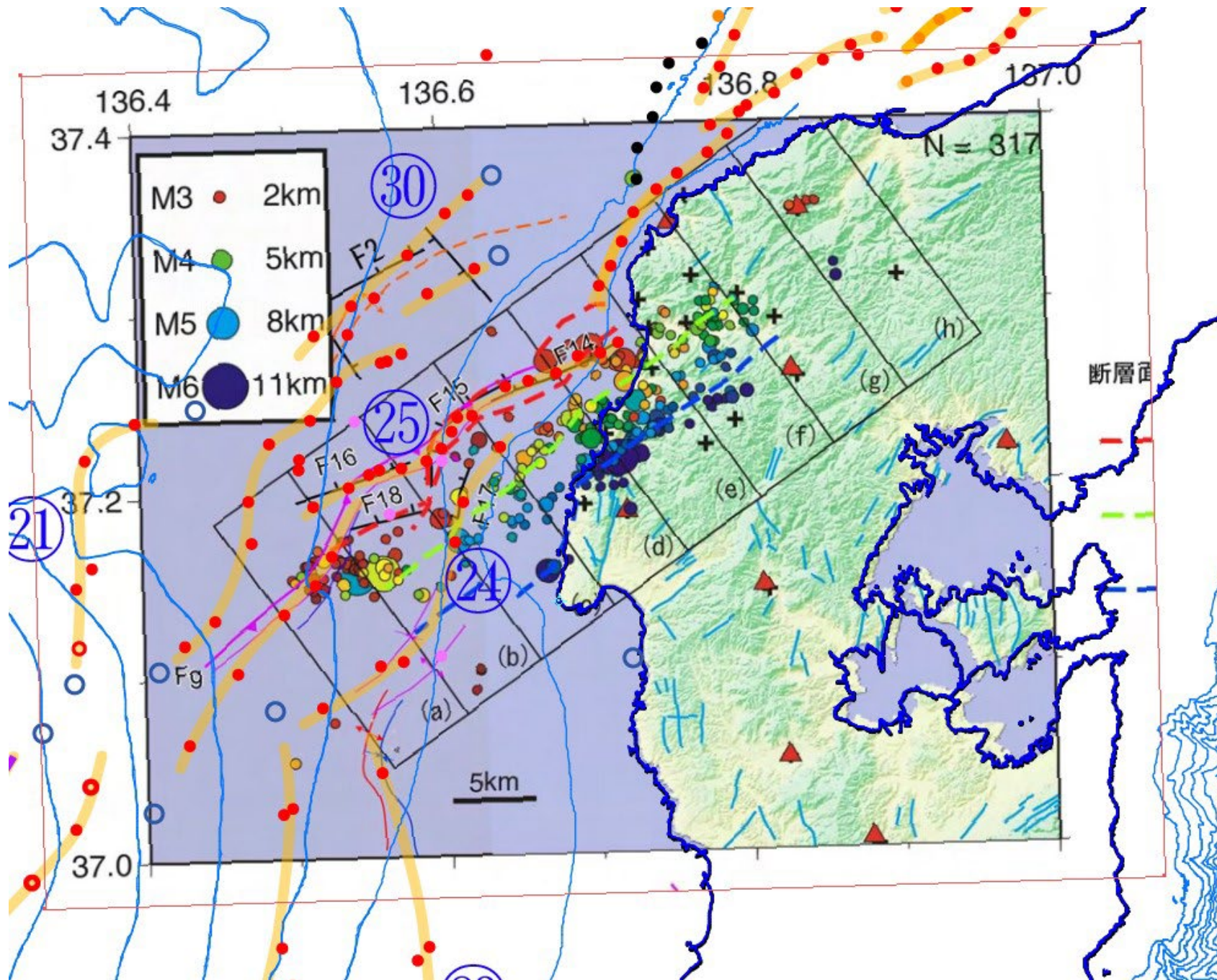
2007年 能登半島地震 の地震活動 との比較

比較対象：
Sakai et al. (2008)
Fig. 2(a)



2007年 能登半島地震 の地震活動 との比較

比較対象：
平成19年（2007年）
能登半島地震の評価
（平成19年4月11日）
p.12 地震調査委員会
資料



文献

- Sakai, S., Kato, A., Iidaka, T., Iwasaki, T., Kurashimo, E., Igarashi, T., Hirata, N., Kanazawa, T. and Group for the Joint Aftershock Observation of the 2007 Noto Hanto Earthquake. (2008): Highly resolved distribution of aftershocks of the 2007 Noto Hanto Earthquake by a dense seismic observation. Earth Planets and Space, 60, 83–88.
- 地震調査委員会（2007）：平成19年（2007年）能登半島地震の評価（平成19年4月11日），p.12