

日本海南東部（仮称）の 海域活断層の長期評価に関する資料

令和5年9月25日（月）

第23回海域活断層評価手法等検討分科会

本日の審議の流れ

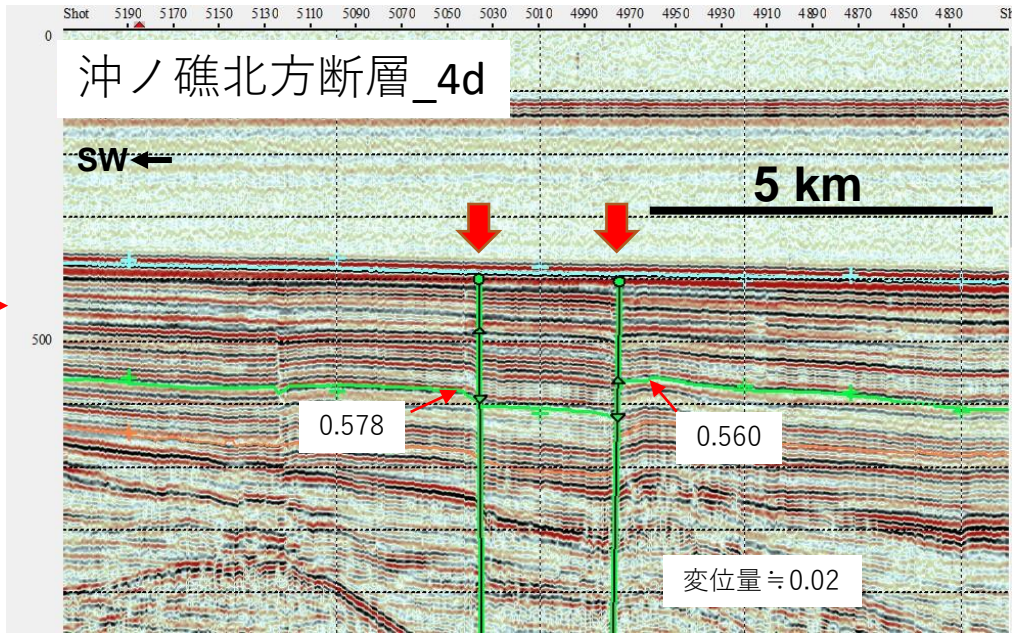
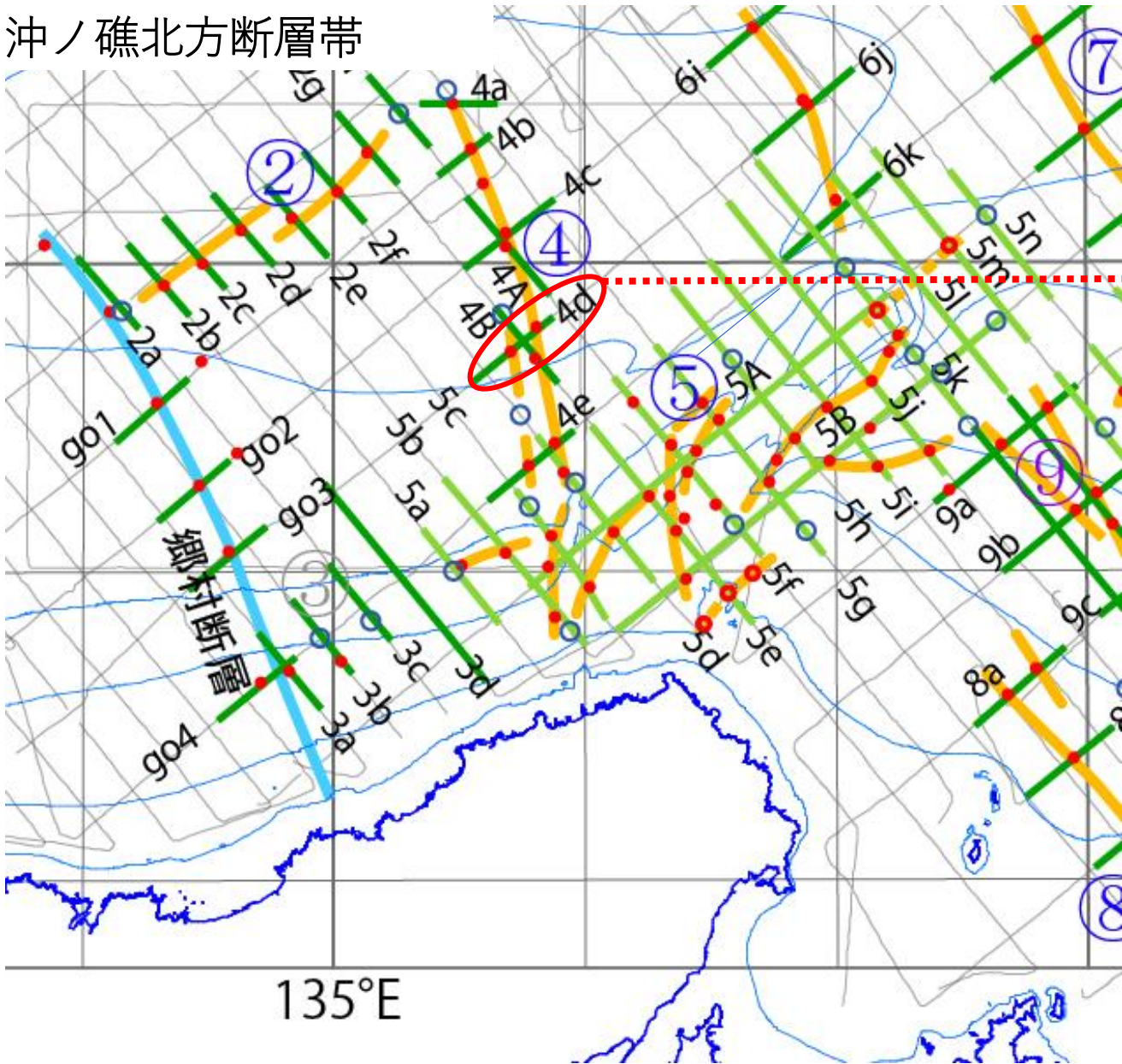
1. 評価対象断層の垂直変位量の読み取り結果の審議
2. 断層帯⑤（経ヶ岬沖断層帯）について再度審議
3. 個別の断層の評価に関する審議
 - 断層帯⑫ + ⑬（越前岬西方沖北断層帯、越前岬西方沖中断層、越前岬西方沖南断層帯）から再開

1. 評価対象断層の垂直変位量の読み取り結果

- 前回までに審議した評価対象断層について、審議で決定した断面を用いて垂直変位量の読み取りを行った。
- 読み取り結果についてご審議いただきたい。

④

沖ノ礁北方断層帯

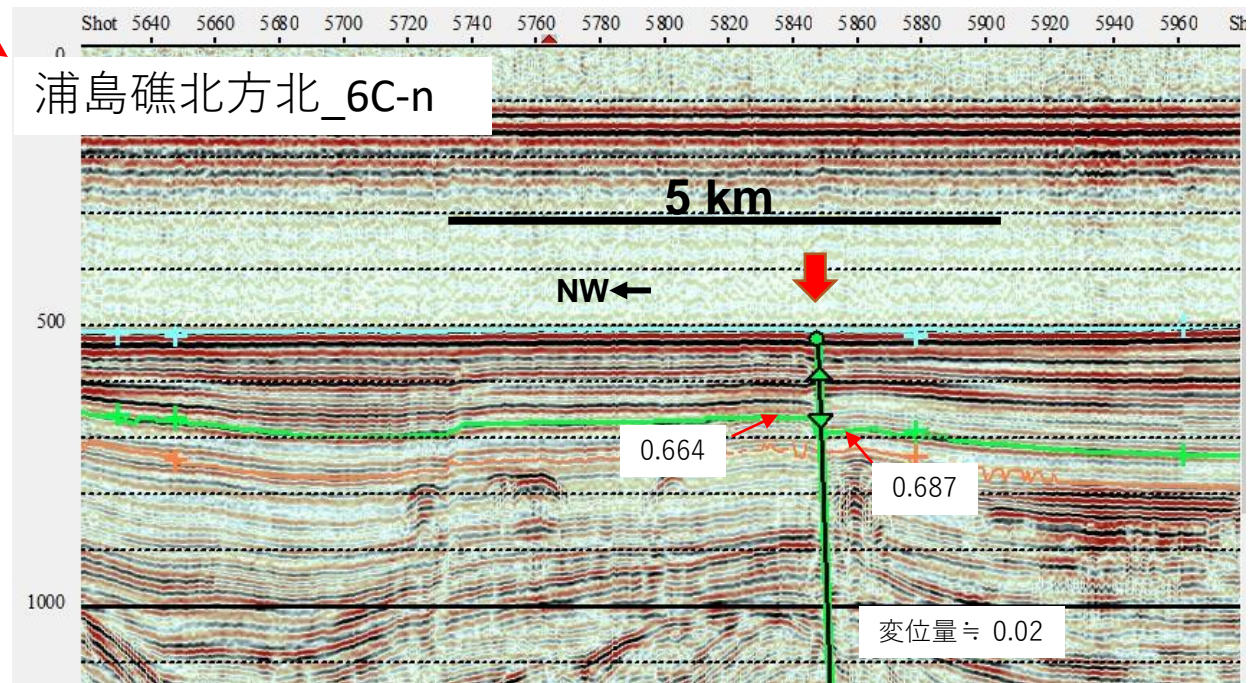
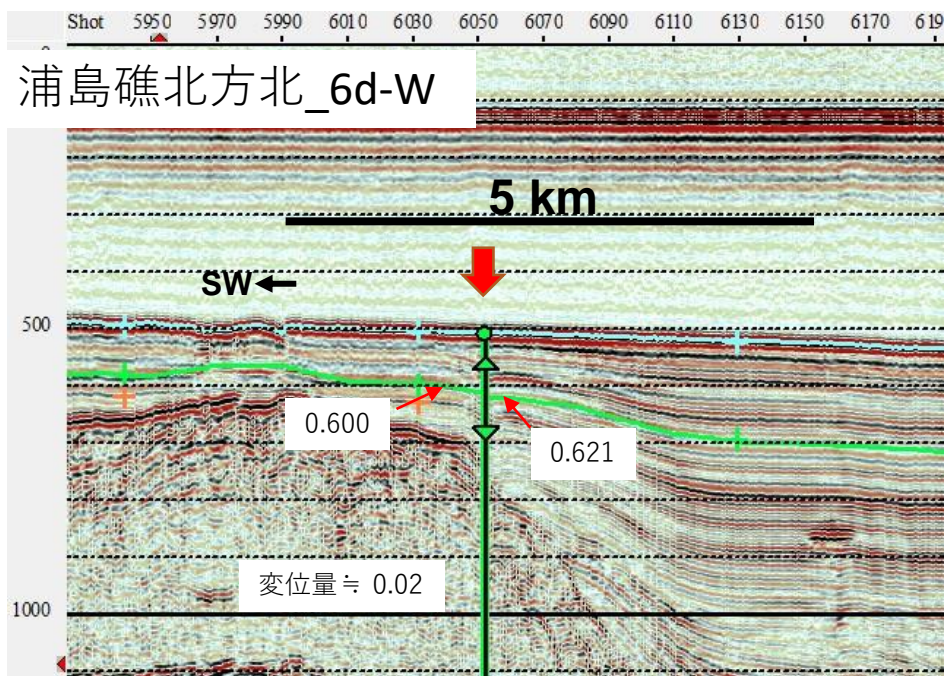
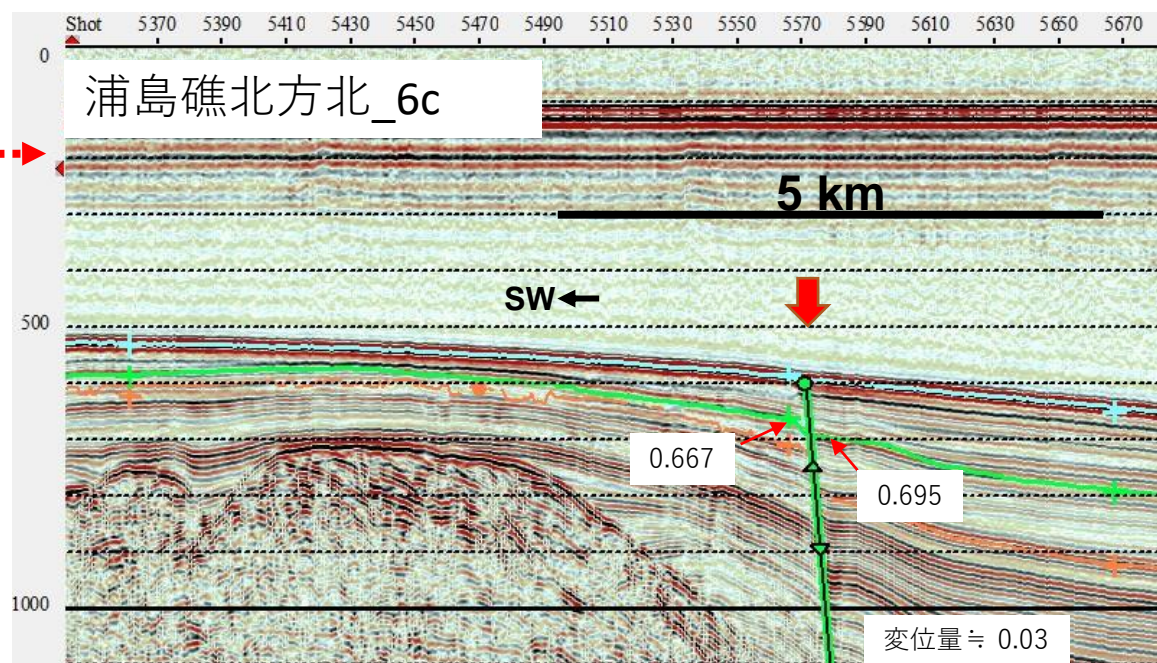
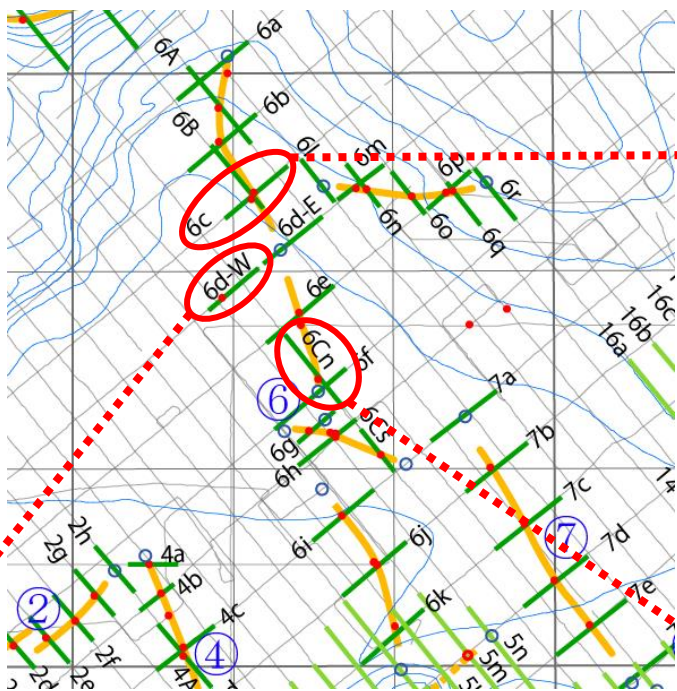


垂直変位量 ≒ 0.02 (s)

⑥

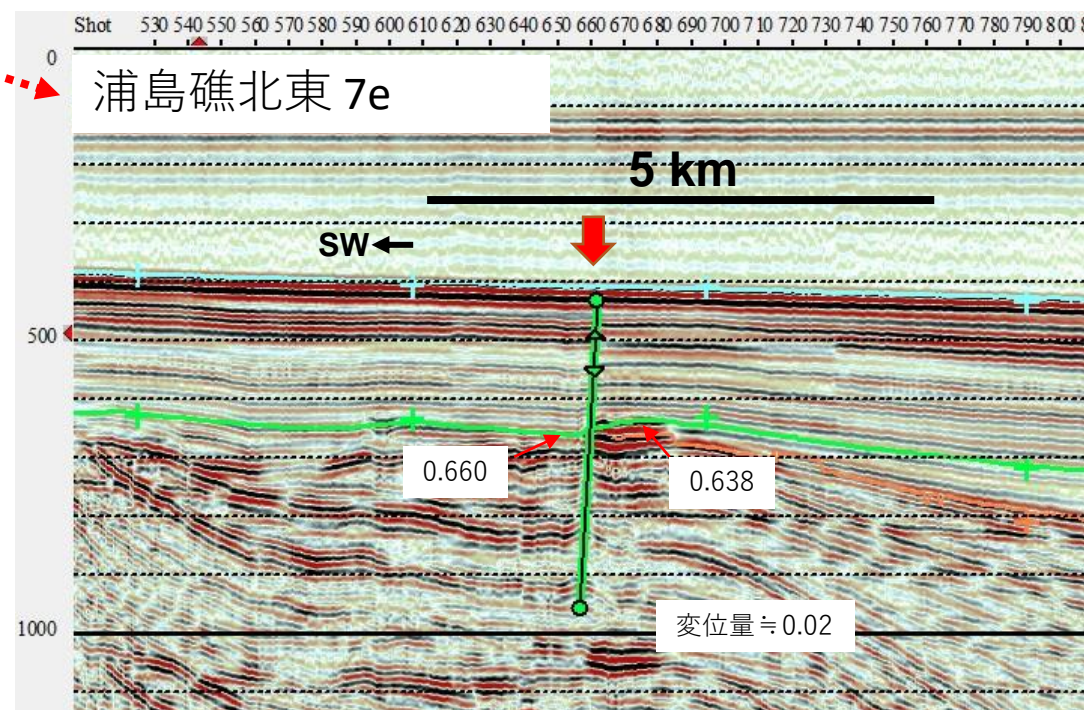
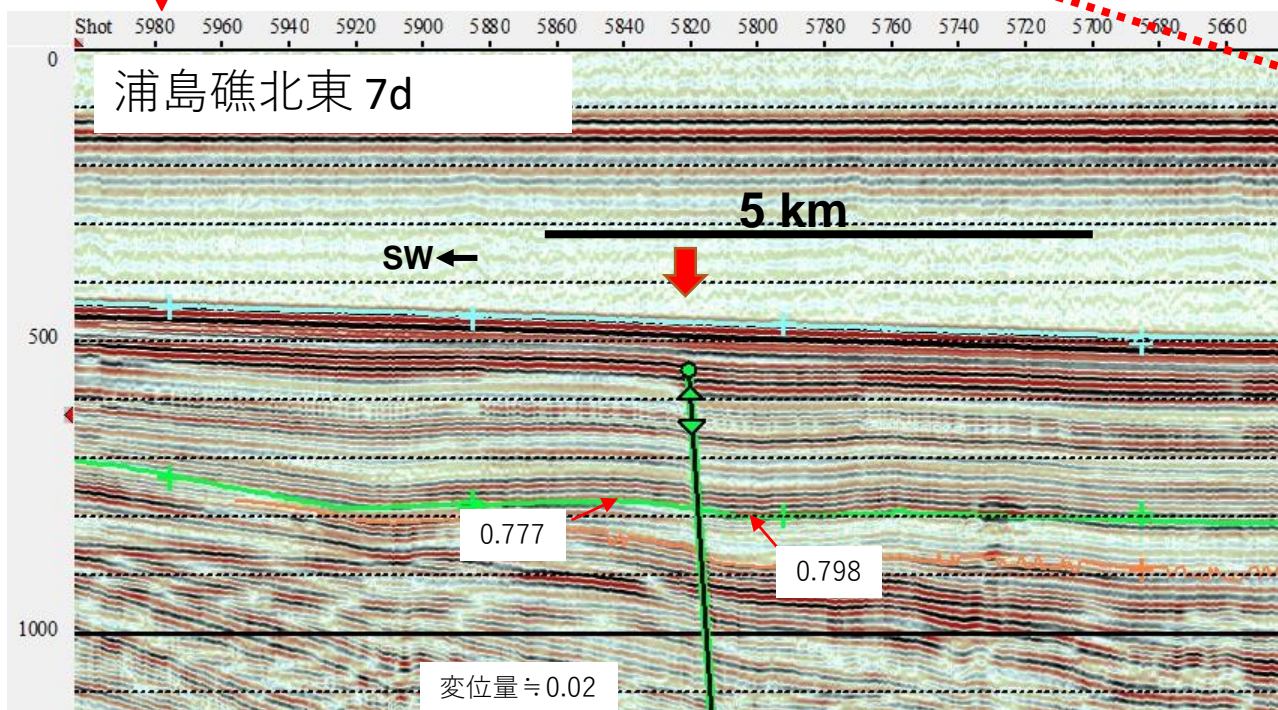
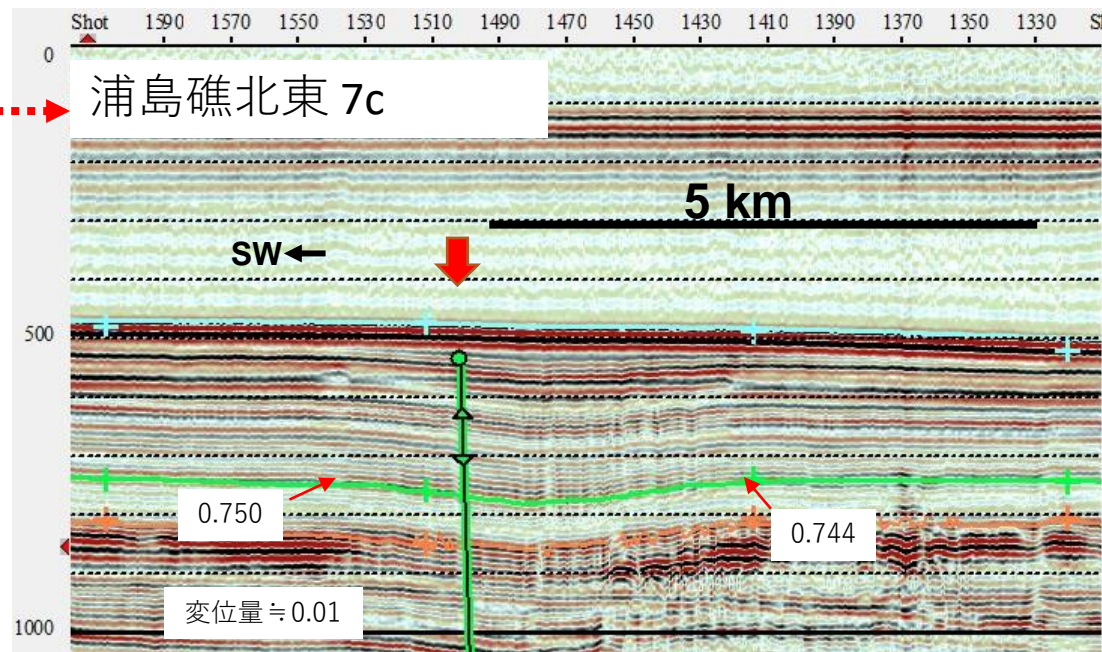
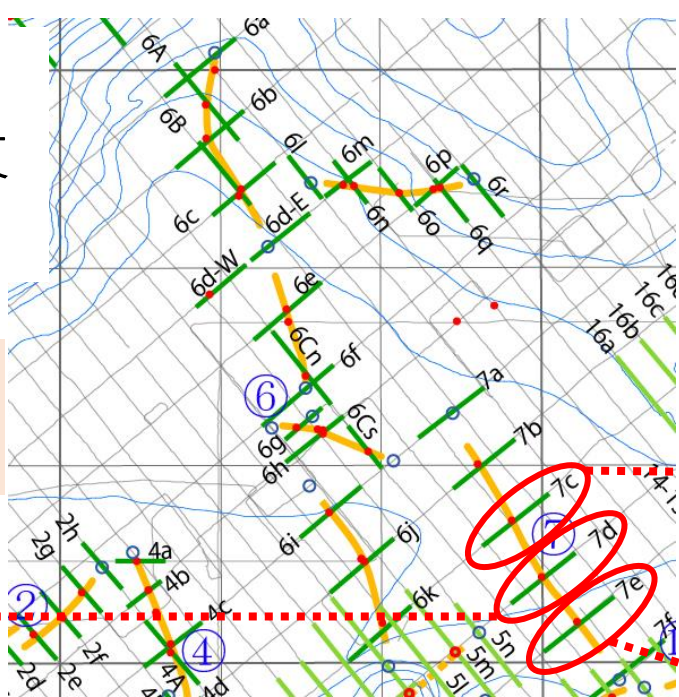
浦島礁北方北 断層帯

垂直変位量
≒ 0.03 (s)

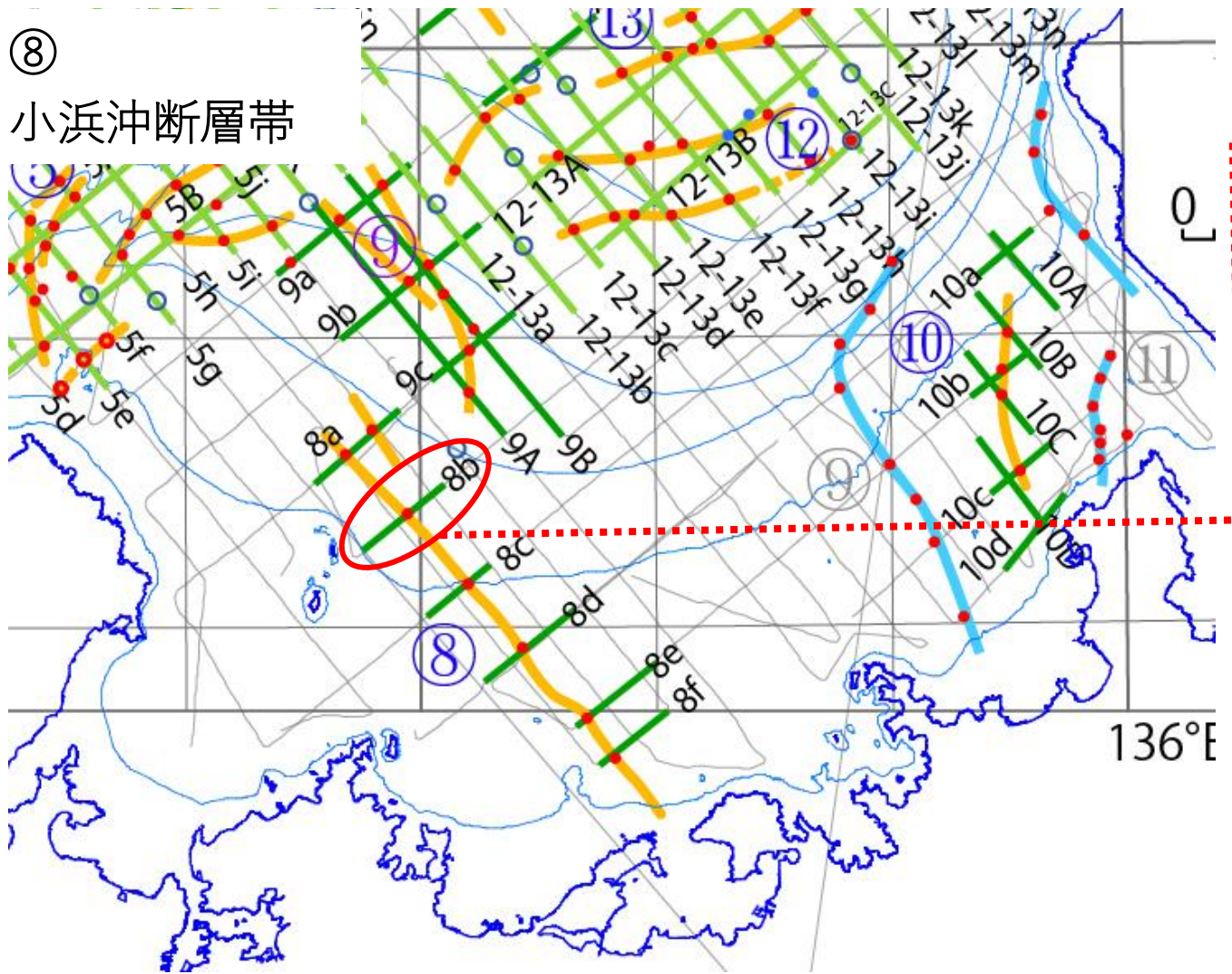


⑦ 浦島礁北東 断層帯

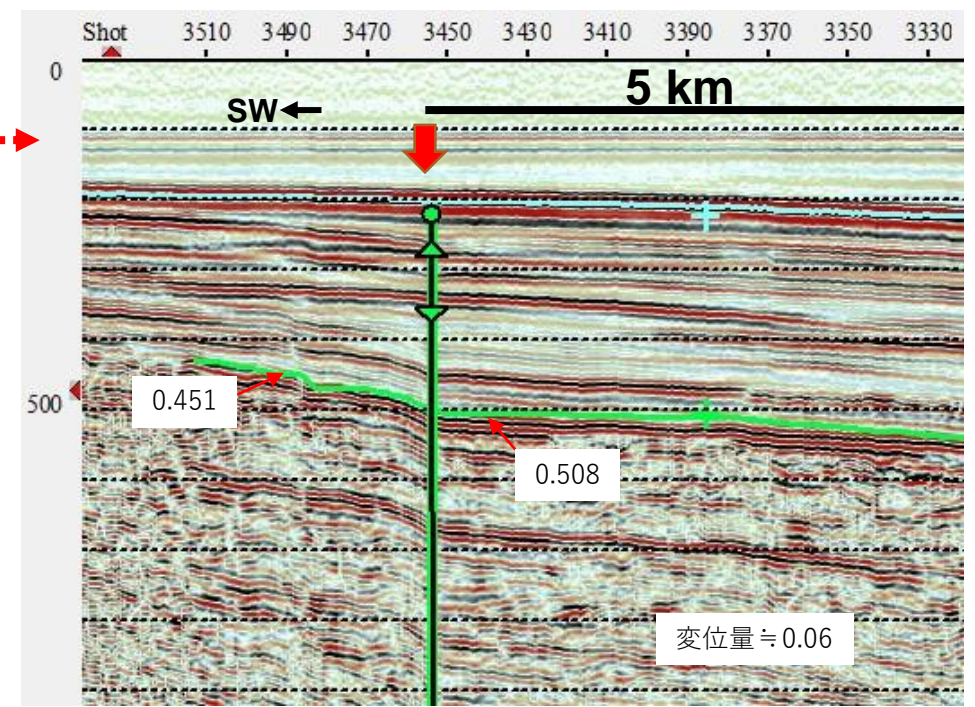
垂直変位量
≒ 0.02 (s)



⑧
小浜沖断層帯



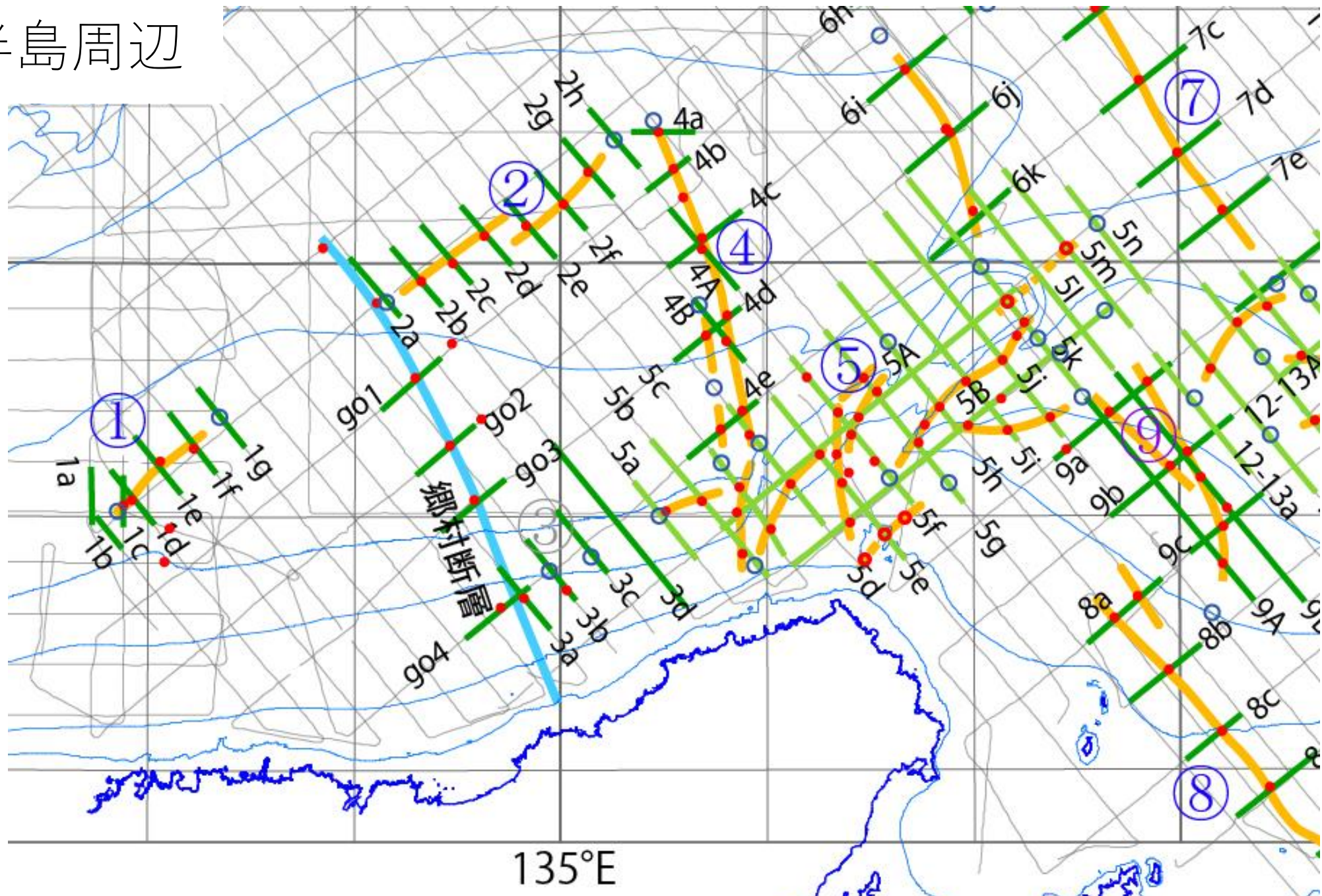
小浜沖断層 8b



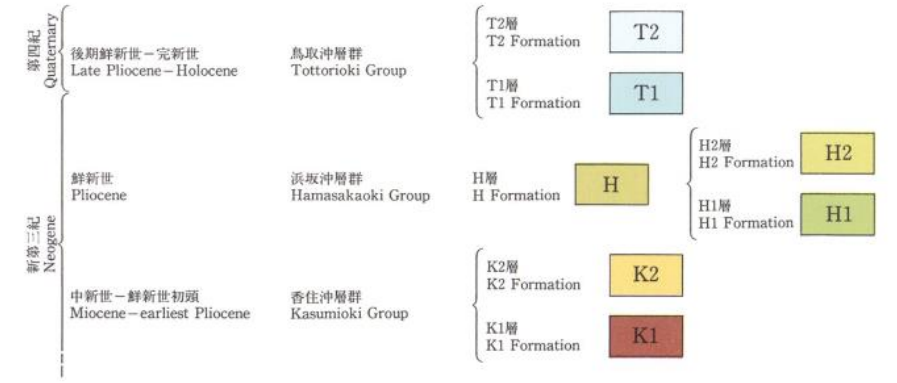
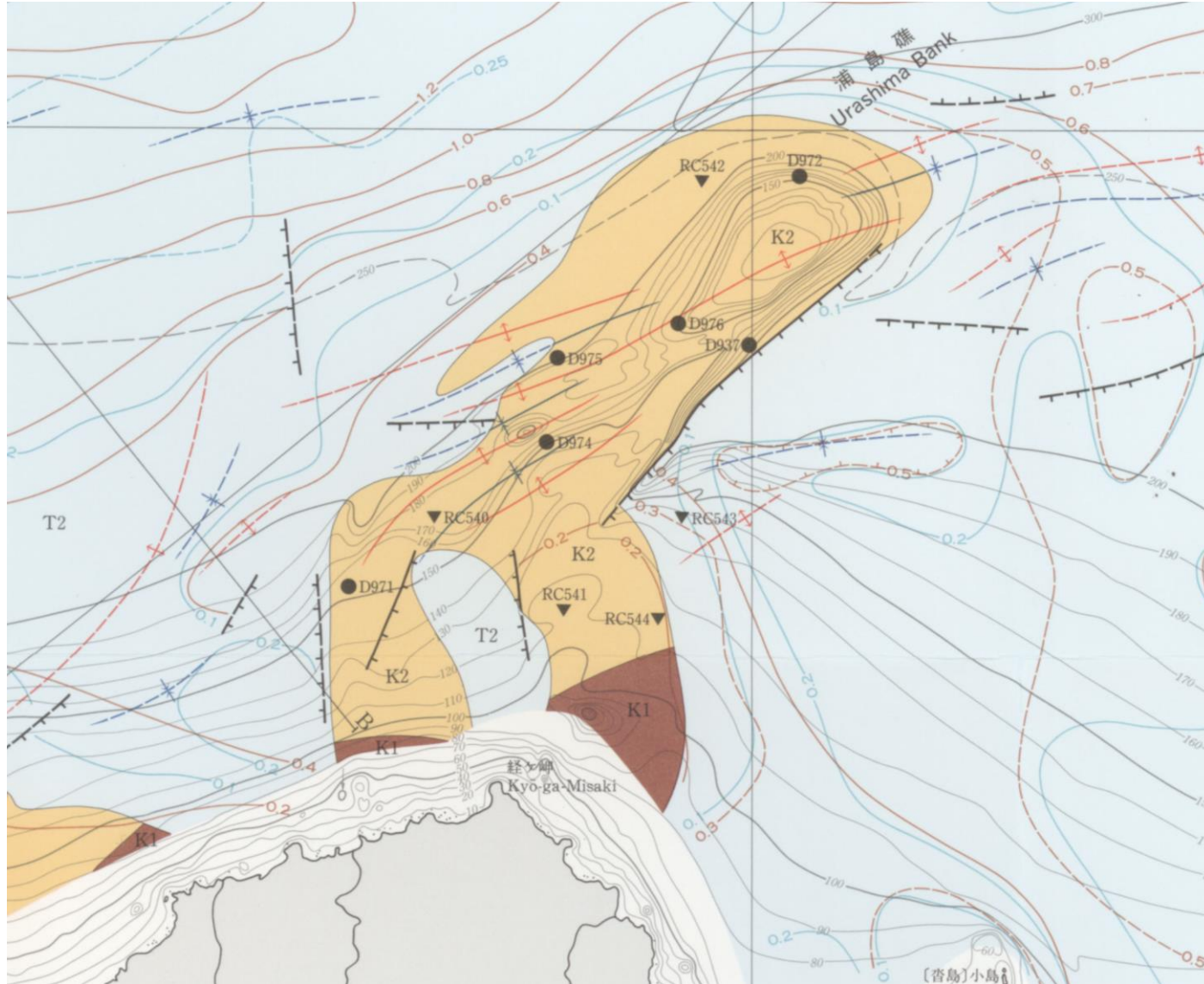
垂直変位量 $\div 0.06$ (s)

2. ⑤経ヶ岬沖断層帯について

丹後半島周辺



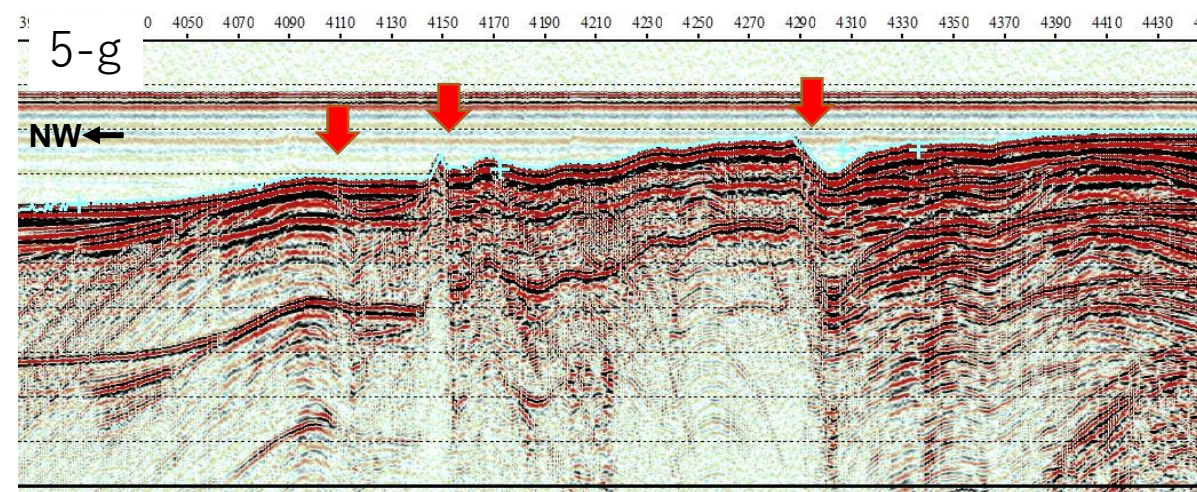
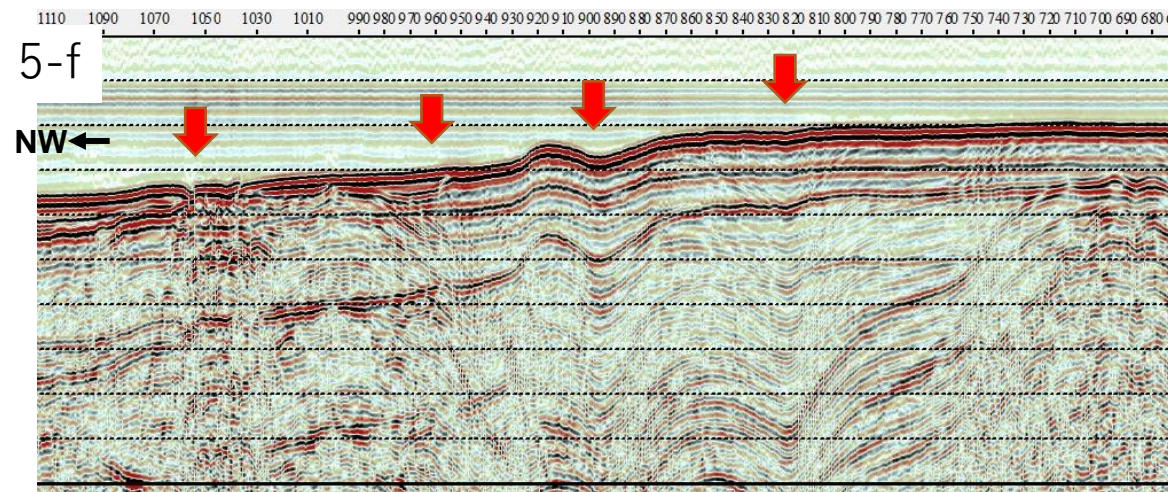
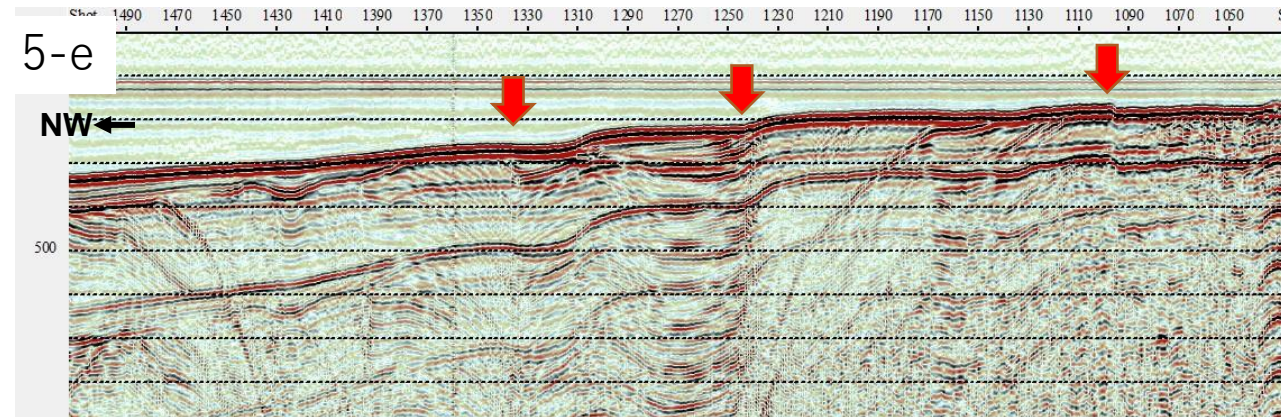
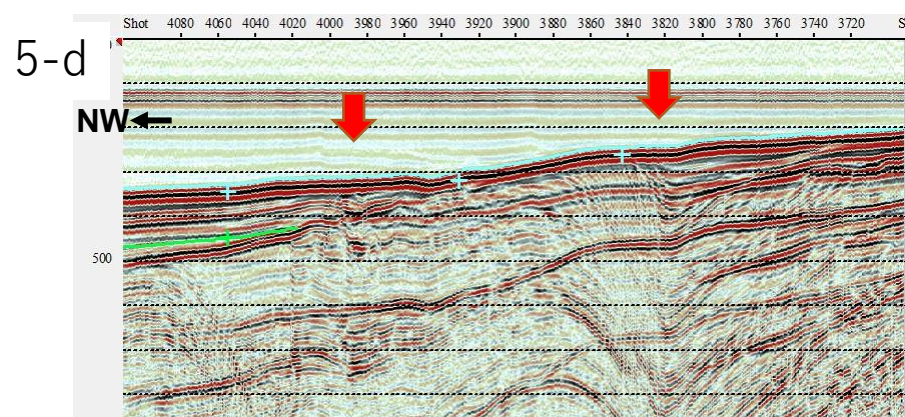
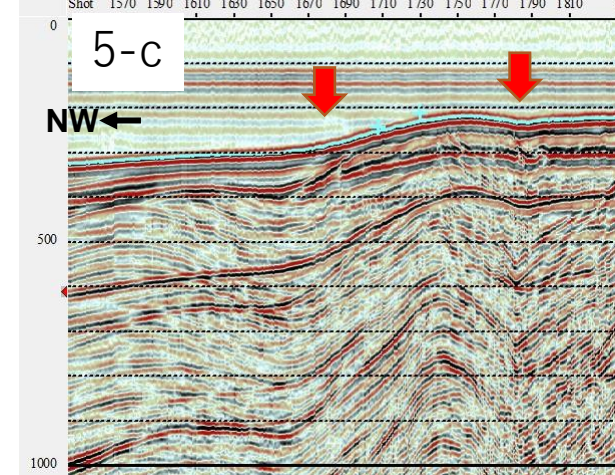
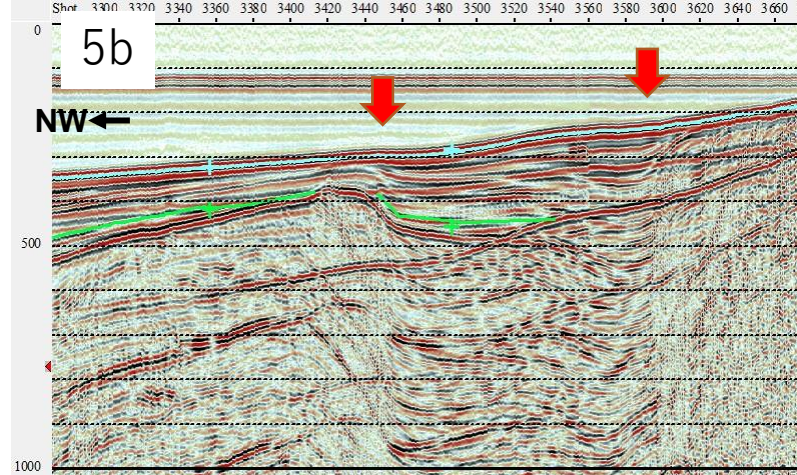
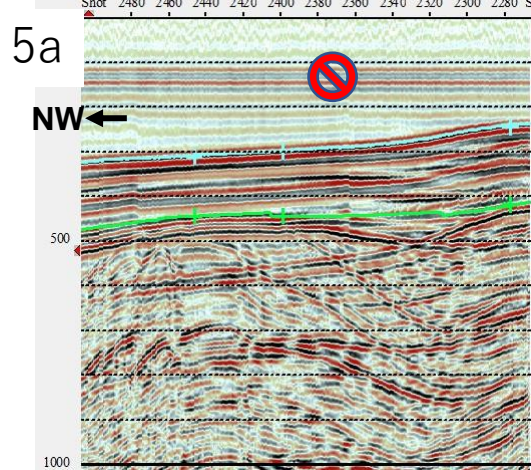
経ヶ岬沖海底地質図 (山本, 1993)より

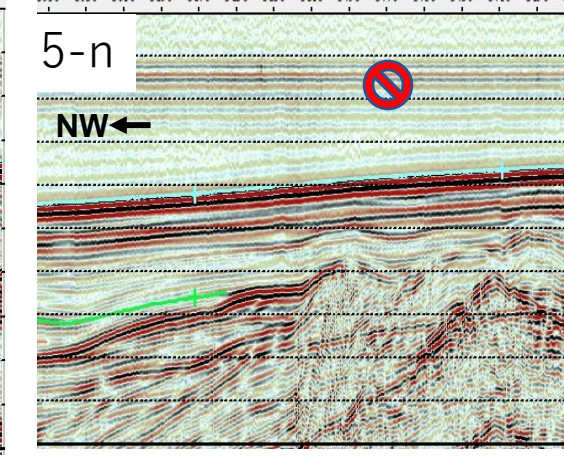
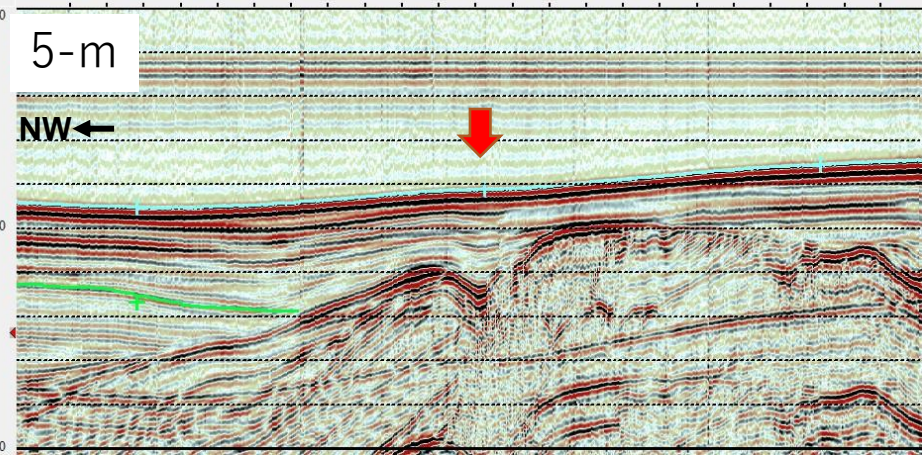
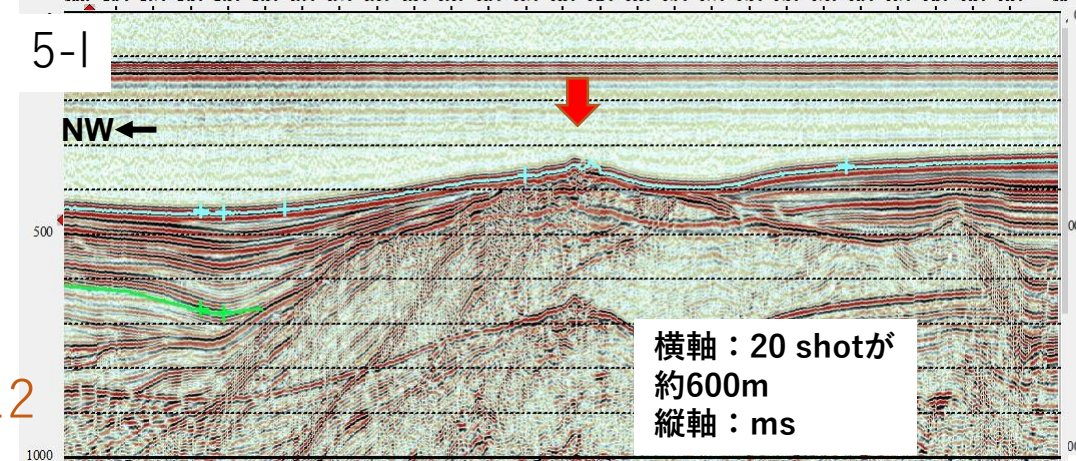
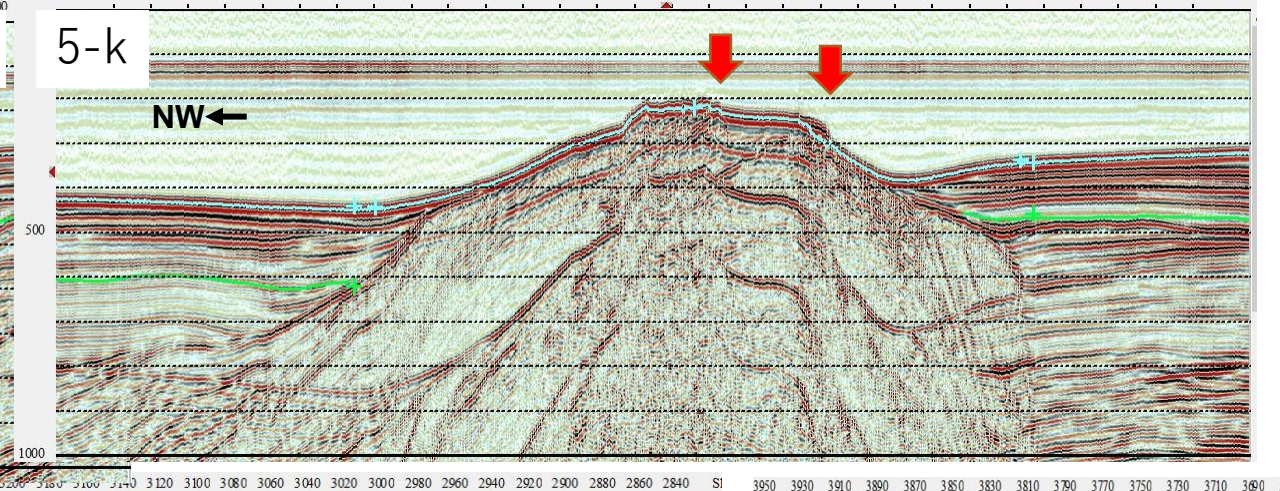
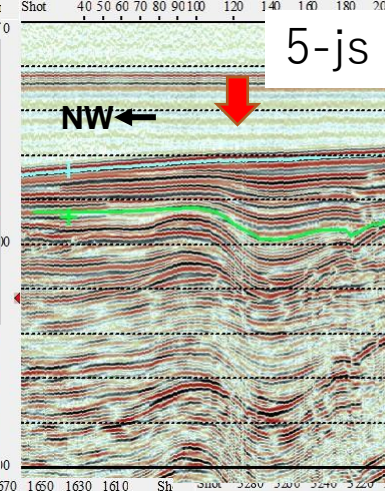
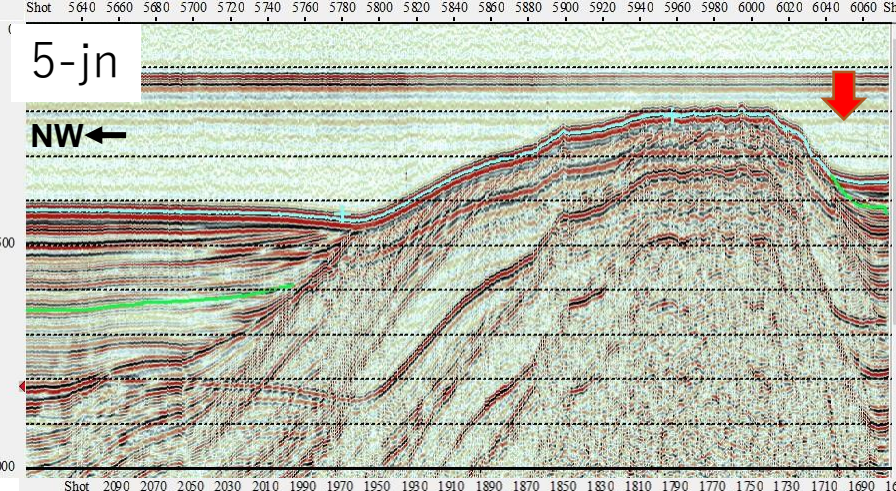
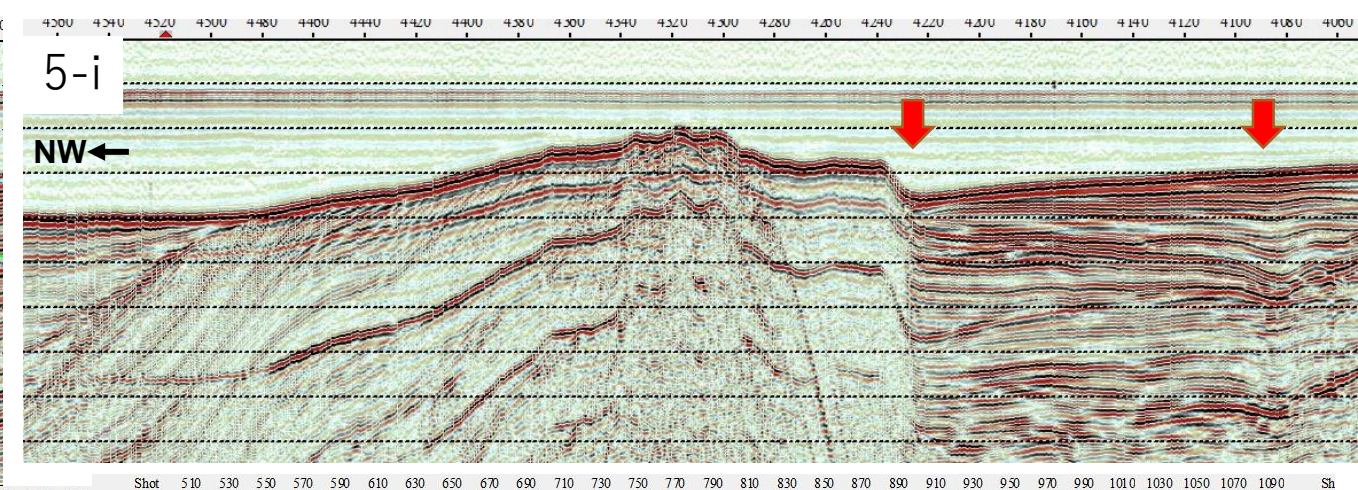
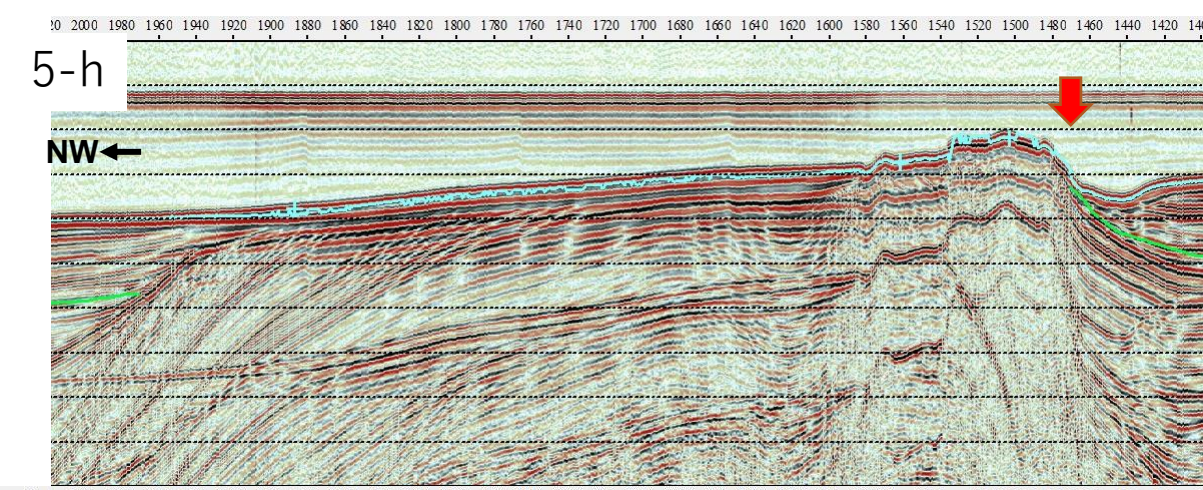


- T2層の等厚線(往復走時, 秒)
Isopach of the T2 Formation (two-way travel time in seconds)
- 香住沖層群上面の等深線(往復走時, 秒)
Iso-depth contours of the top of the Kasumioki Group (two-way travel time in seconds)
- 背斜軸
Anticlinal axis
- 伏在背斜軸
Concealed anticlinal axis
- 向斜軸
Synclinal axis
- 伏在向斜軸
Concealed synclinal axis
- 断層(ケバは落下側を示す)
Fault (barbs on downthrown side)
- 伏在断層
Concealed fault
- 崩落崖
Slump scarp
- D982
ドレッジによる試料採取地点及びサンプル番号
Dredge site and its sample number
- RC550
ロックコアによる試料採取地点及びサンプル番号
Rock core site and its sample number

5

横軸：20 shotが
約600m
縦軸：ms





横軸：20 shotが
約600m
縦軸：ms

5

横軸：20 shotが
約600m
縦軸：ms

