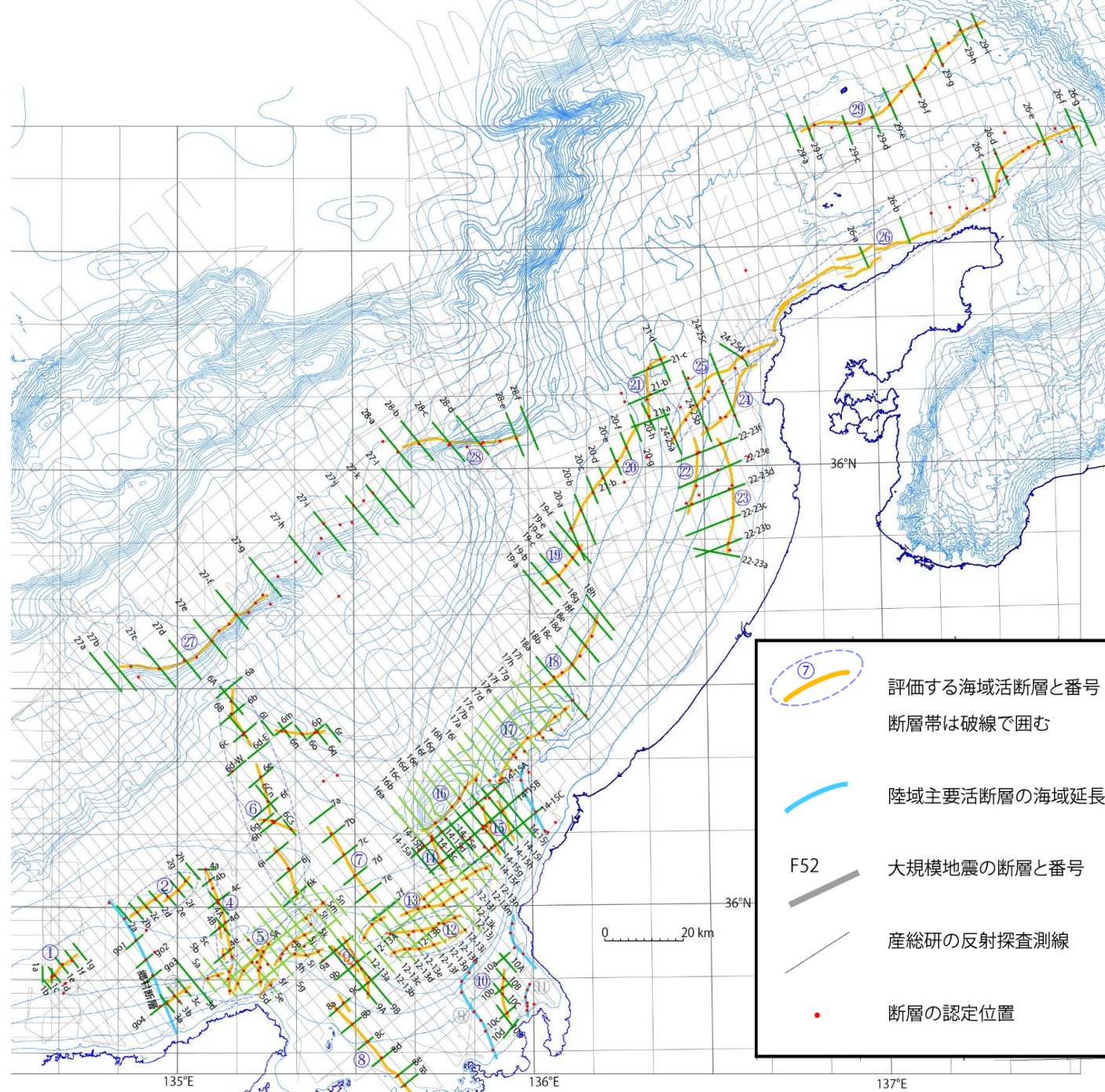


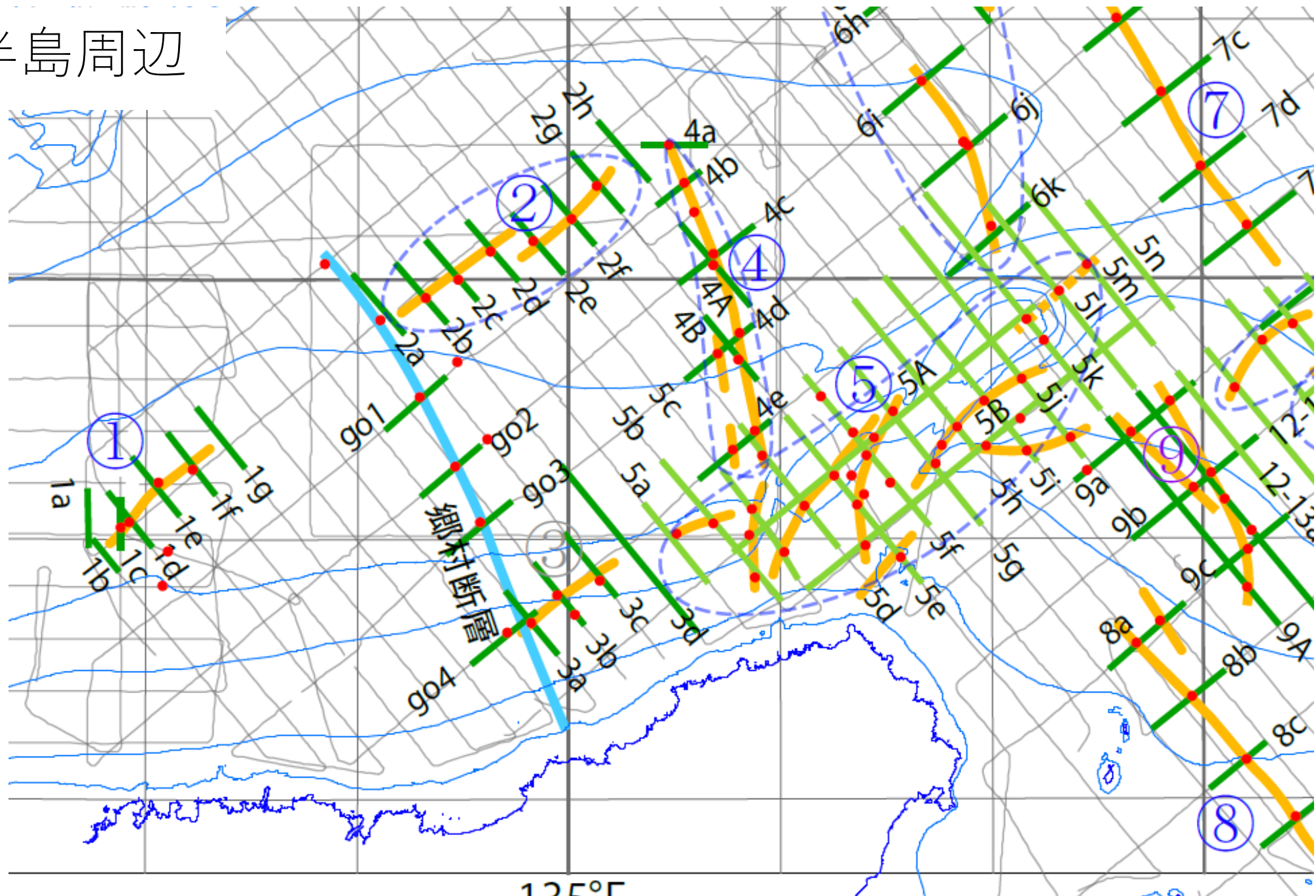
# 近畿－北陸沖海域活断層案及び 反射断面

2023/07/10

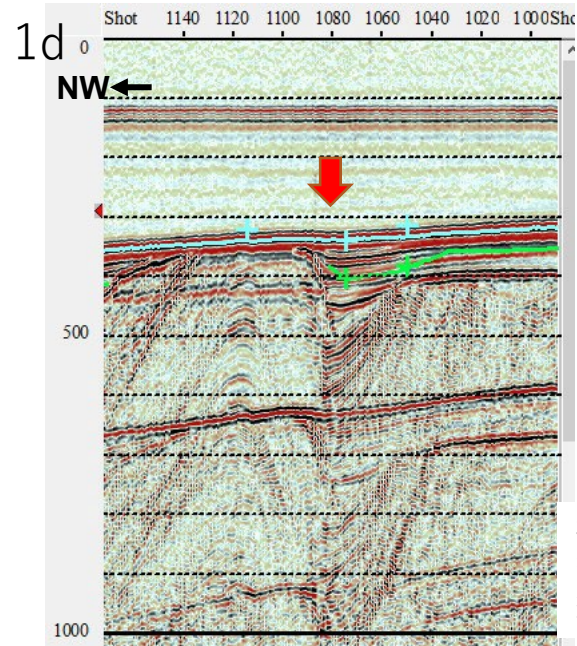
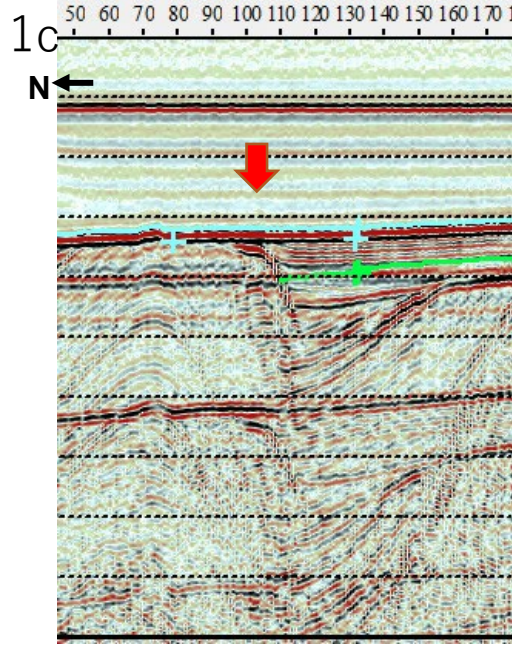
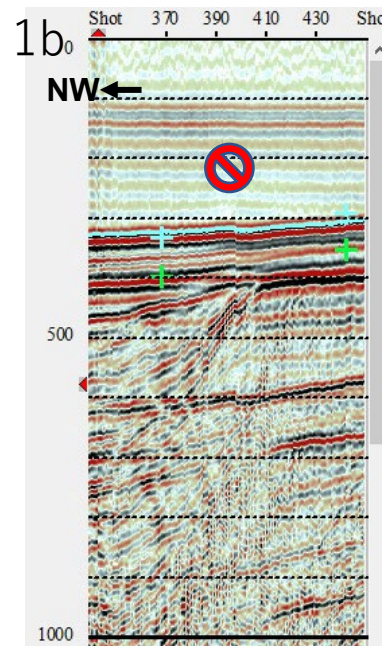
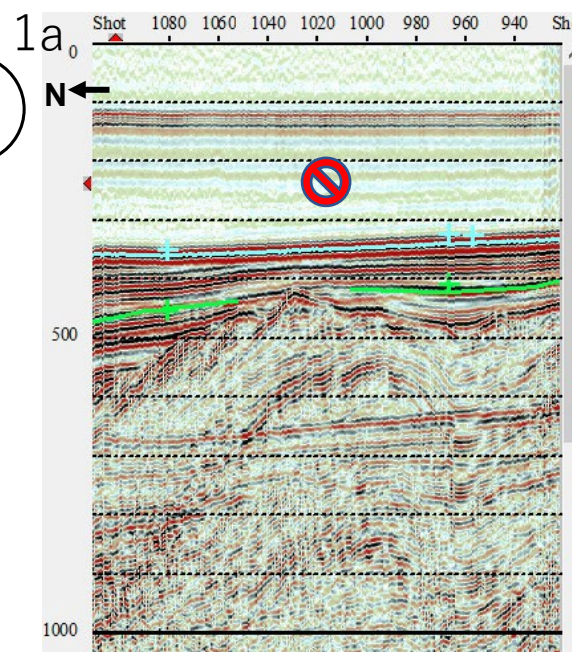
産業技術総合研究所  
活断層・火山研究部門  
岡村行信



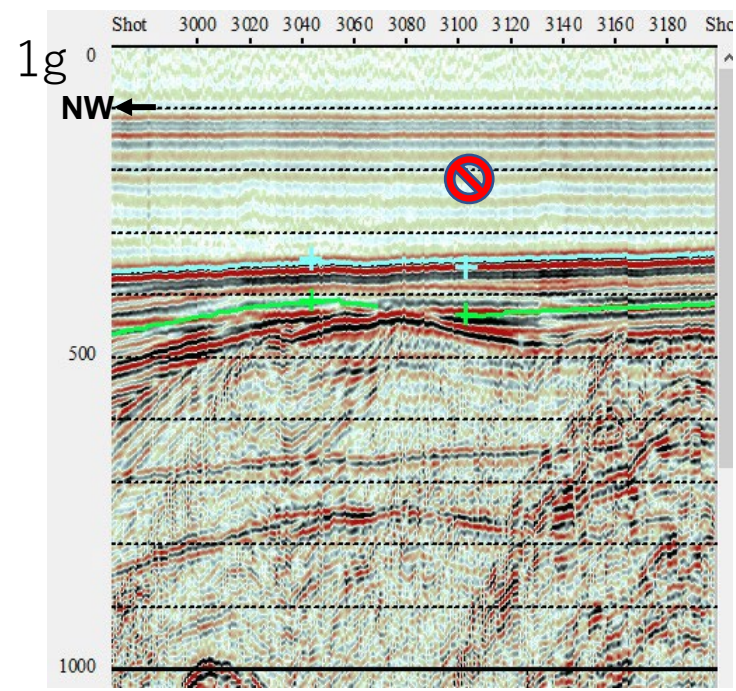
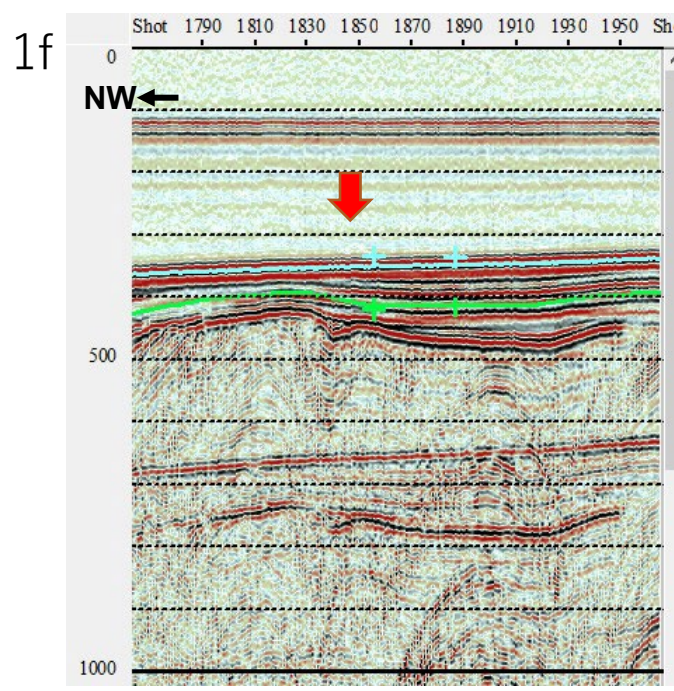
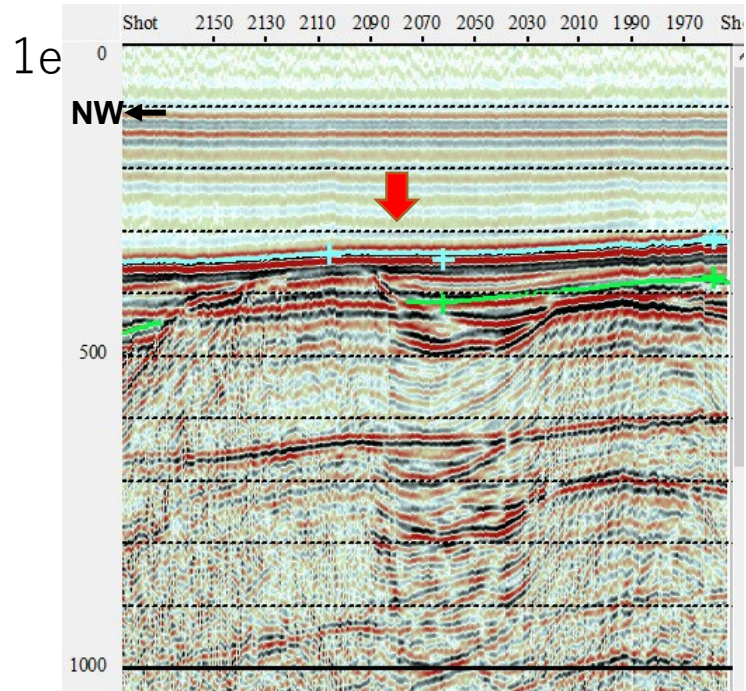
# 丹後半島周辺



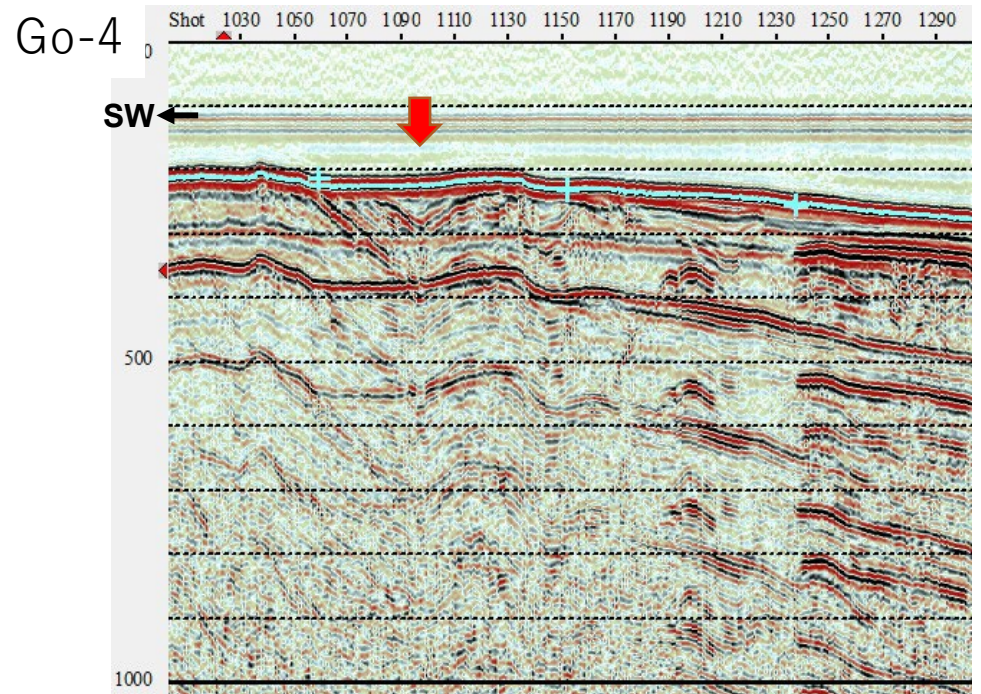
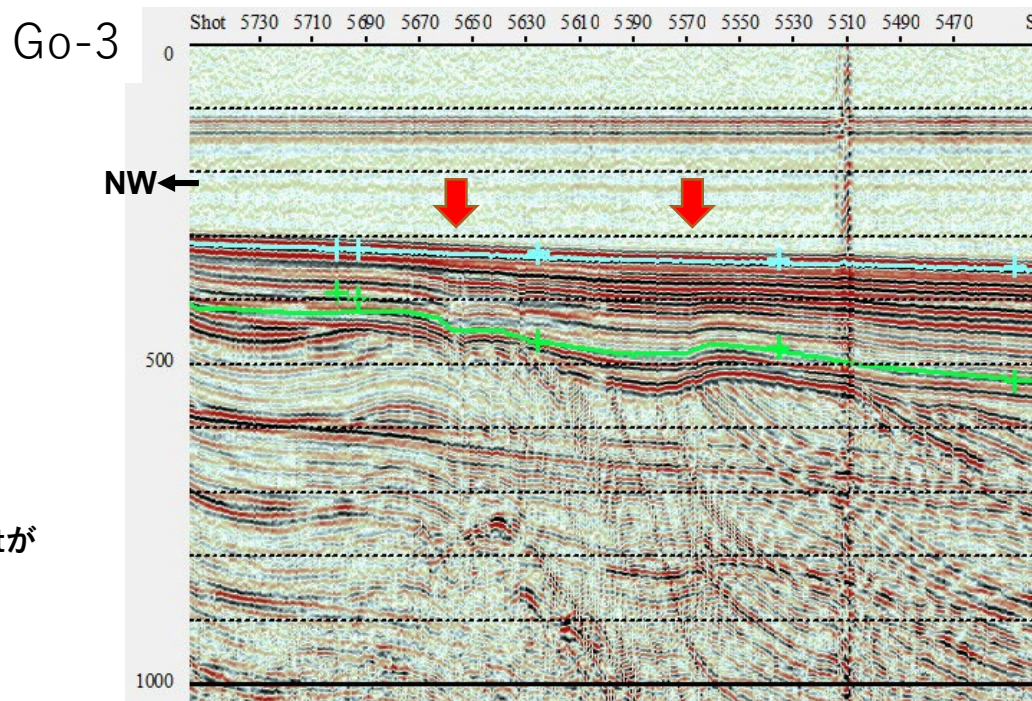
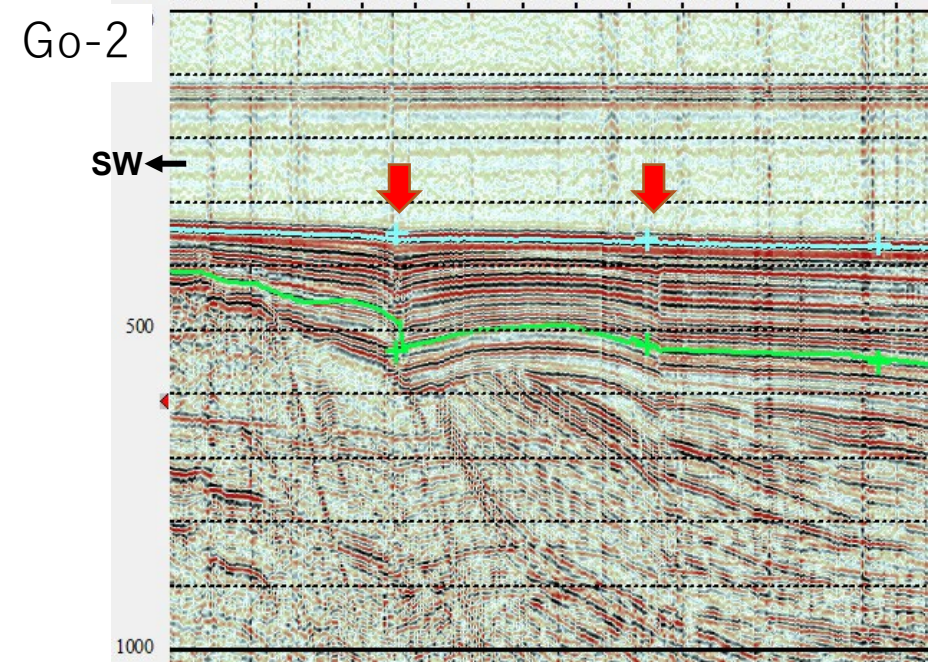
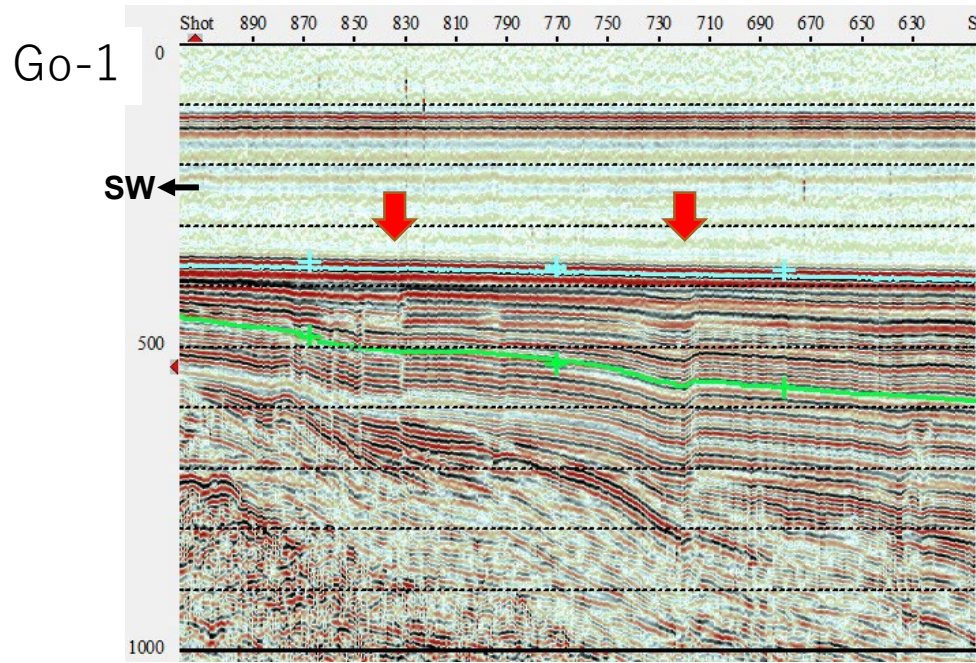
①



横軸：20 shotが  
約600m  
縦軸：ms

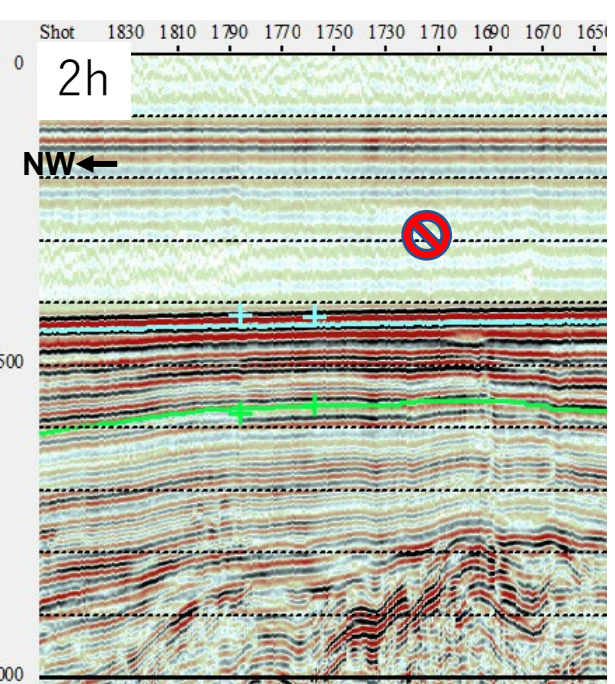
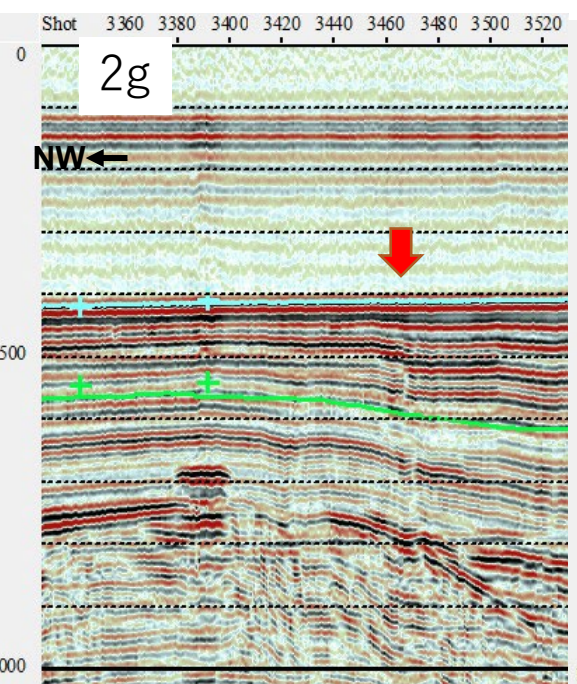
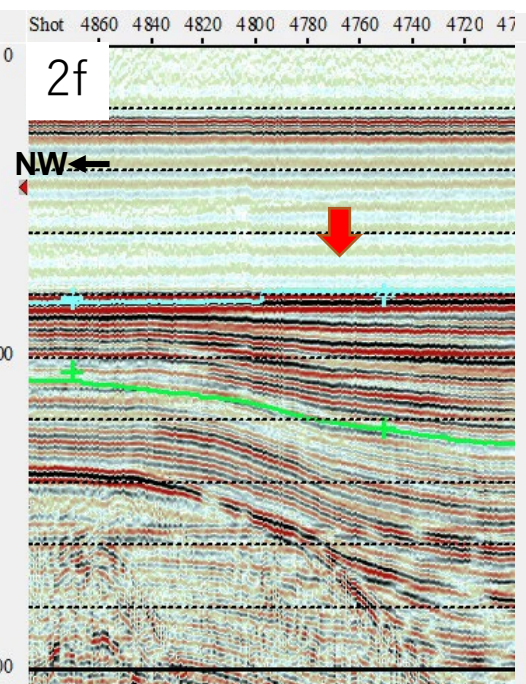
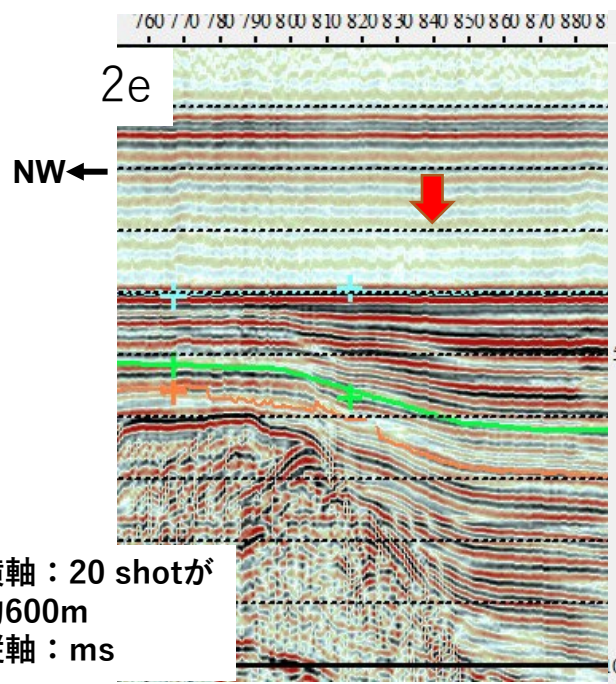
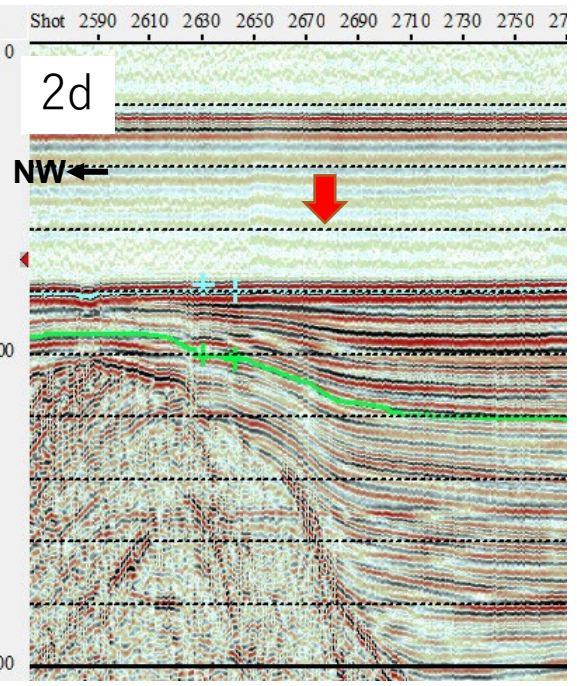
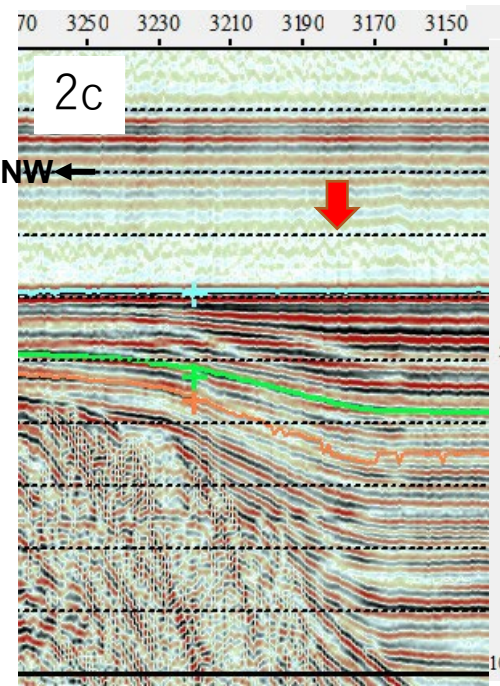
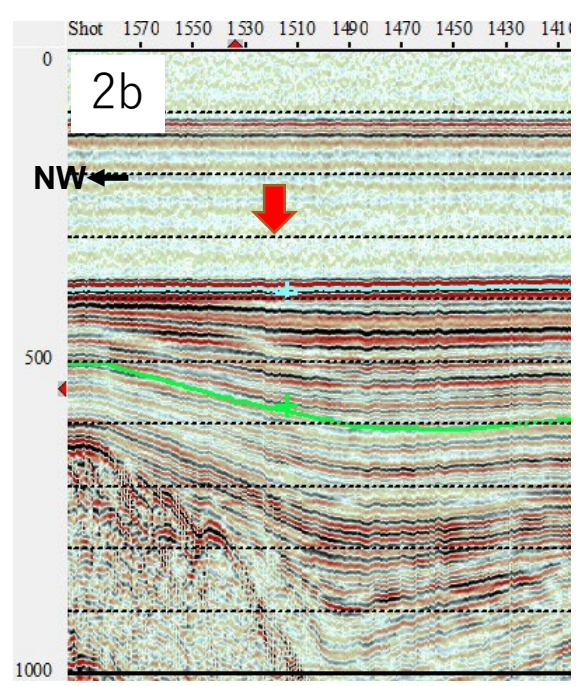
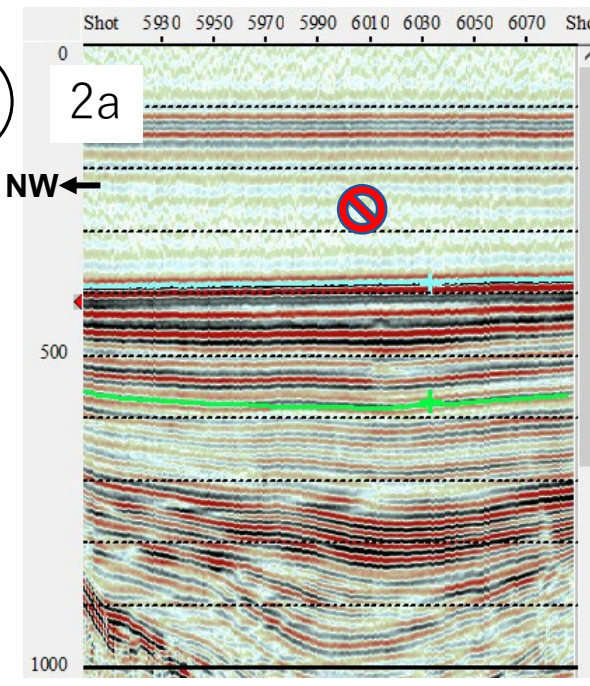


# 郷村断層



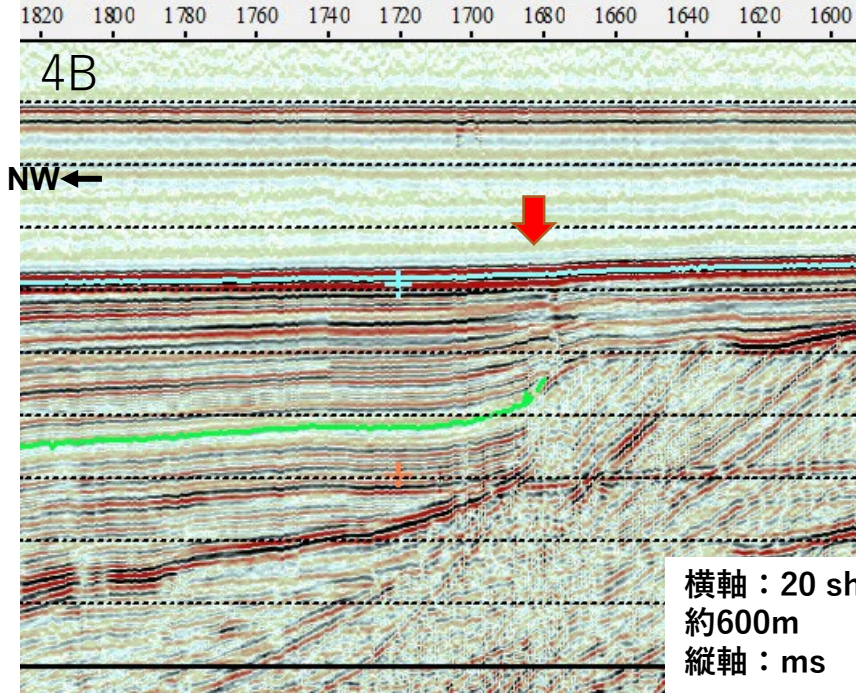
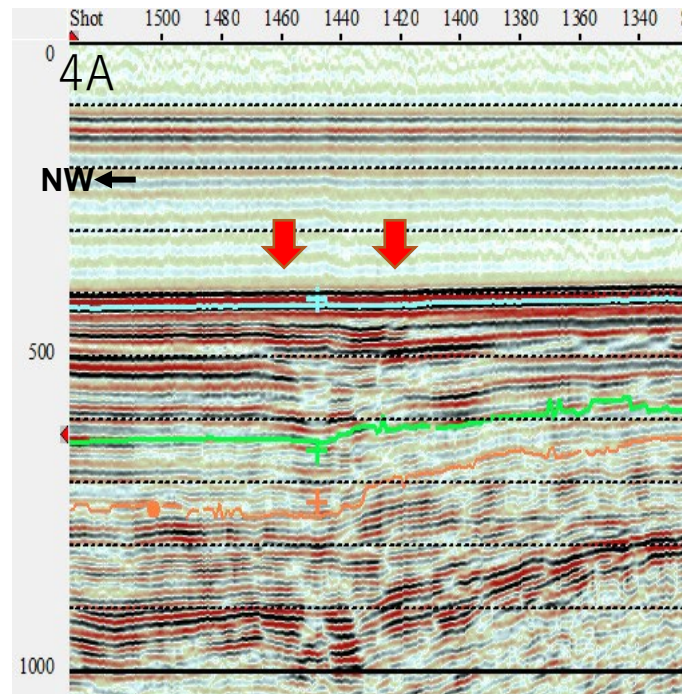
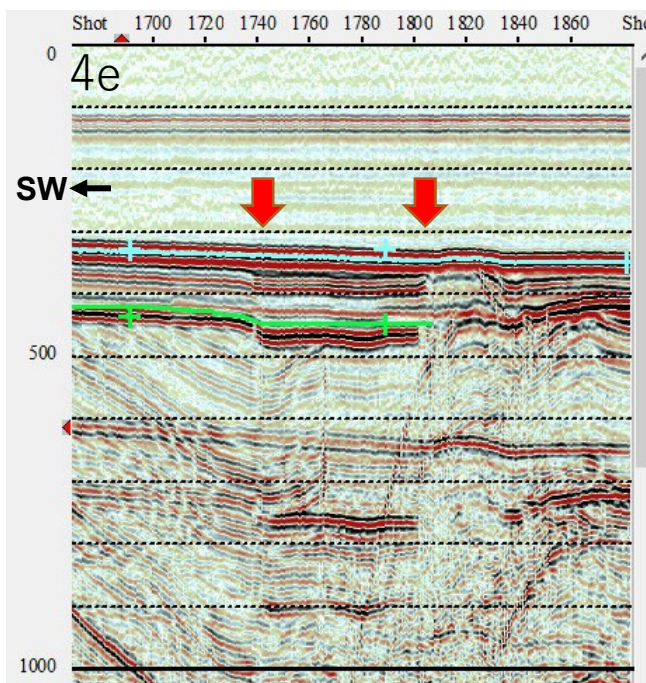
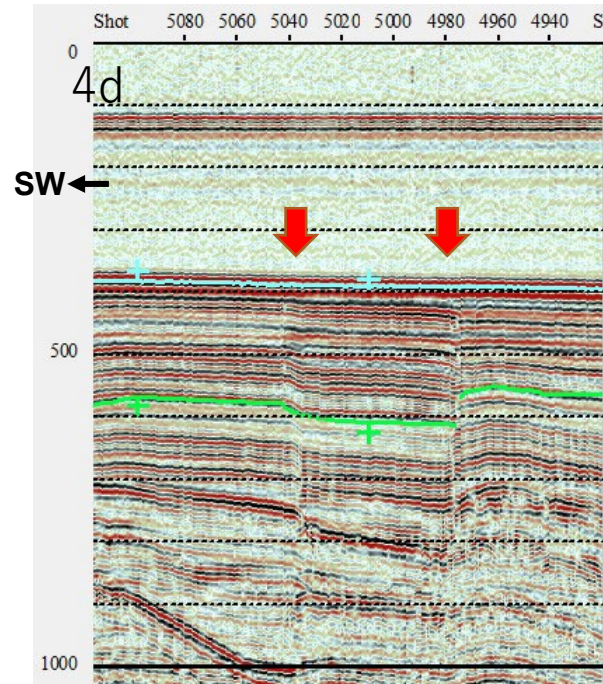
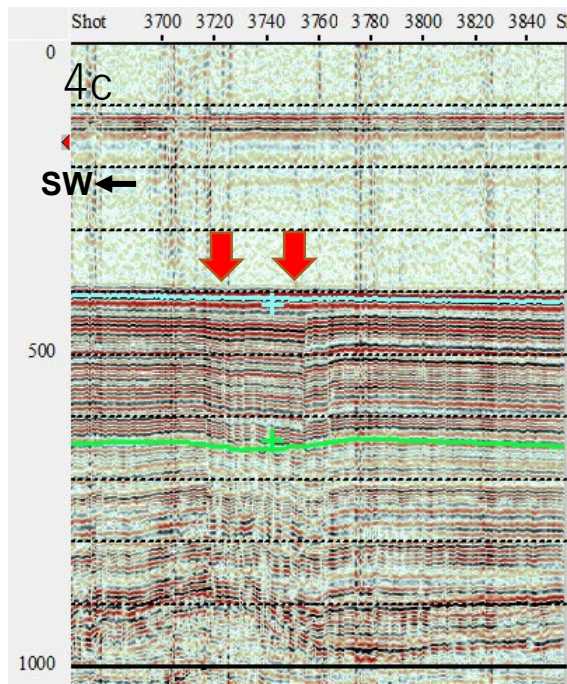
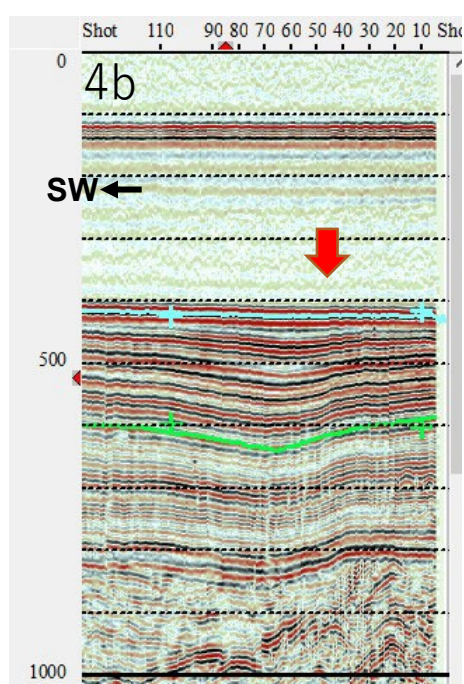
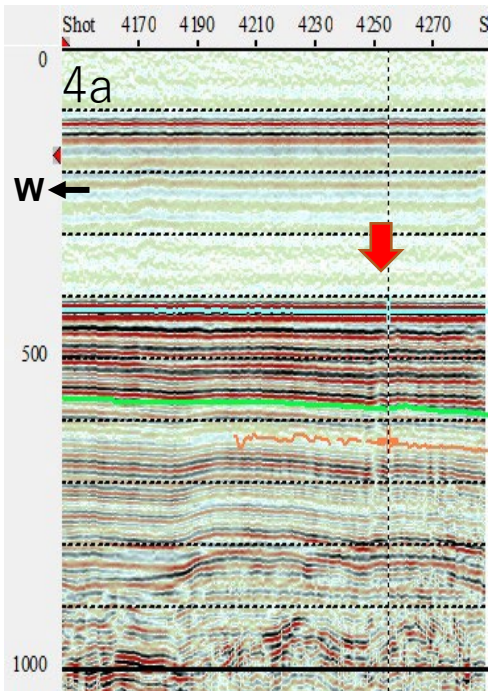
横軸：20 shotが  
約600m  
縦軸：ms

2



横軸：20 shotが  
約600m  
縦軸：ms

4

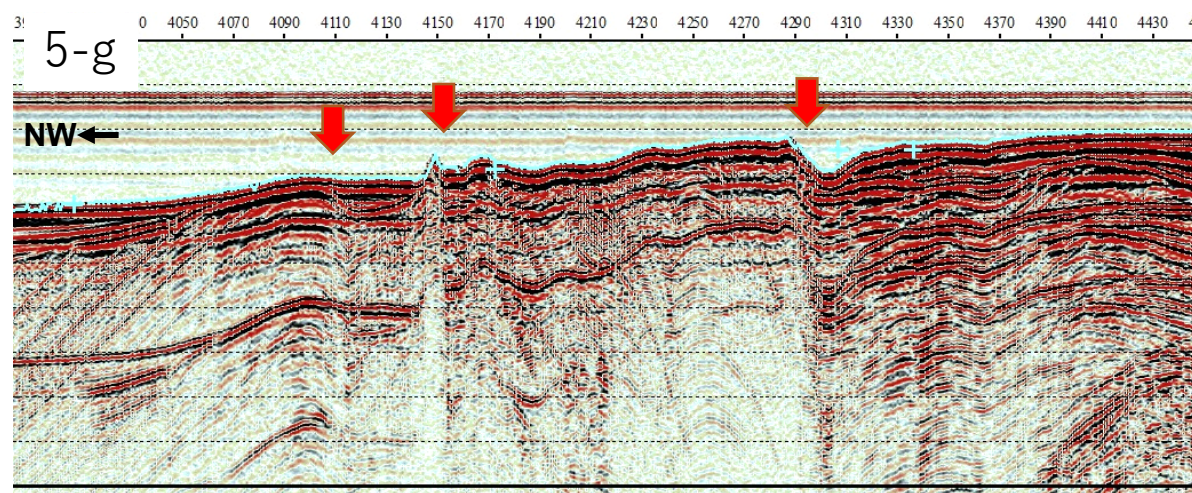
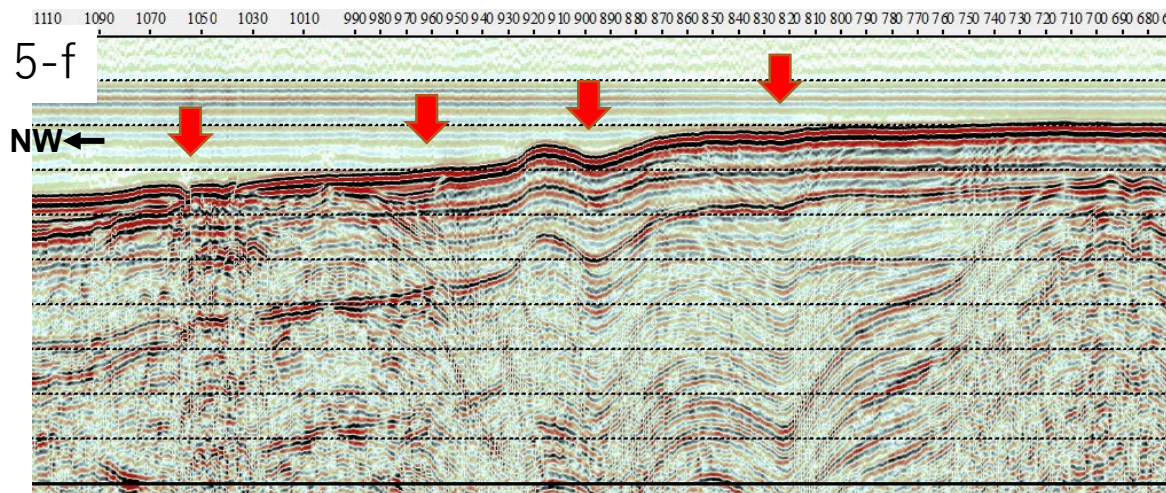
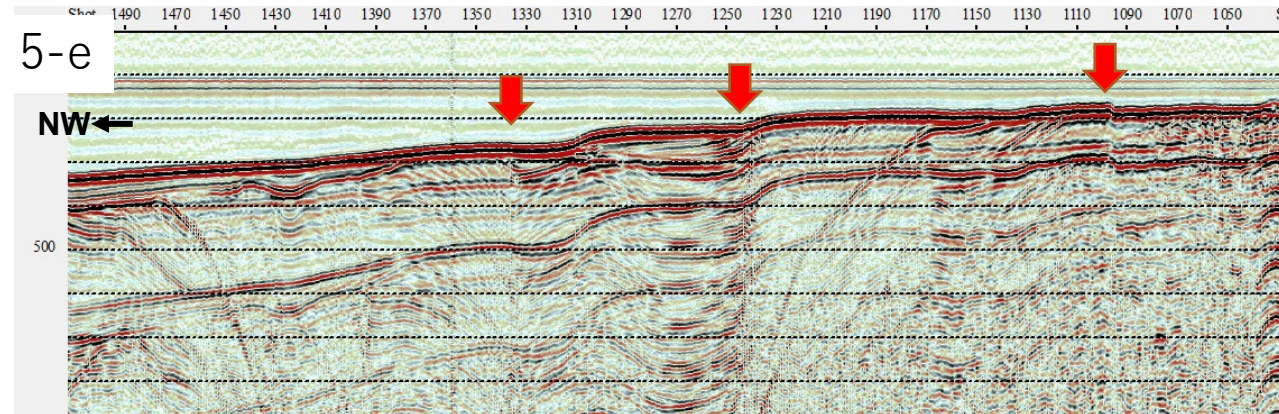
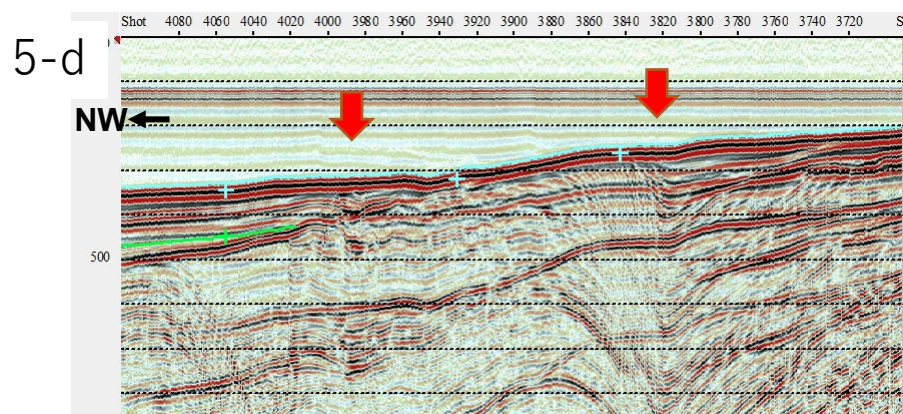
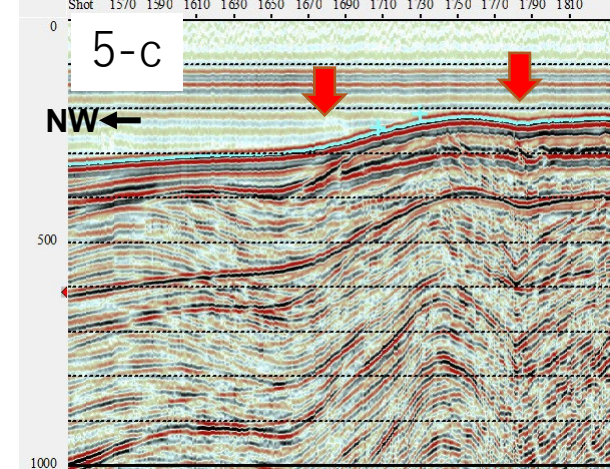
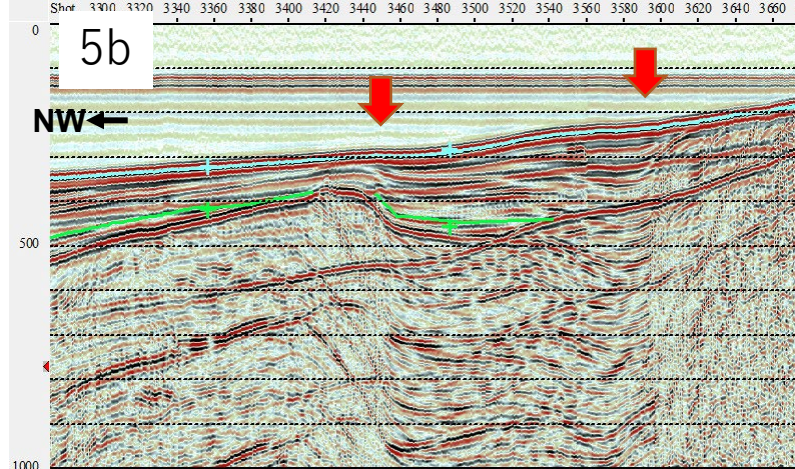
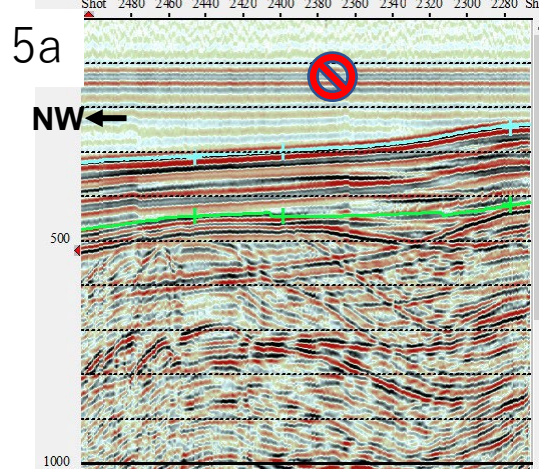


横軸：20 shotが  
約600m  
縦軸：ms

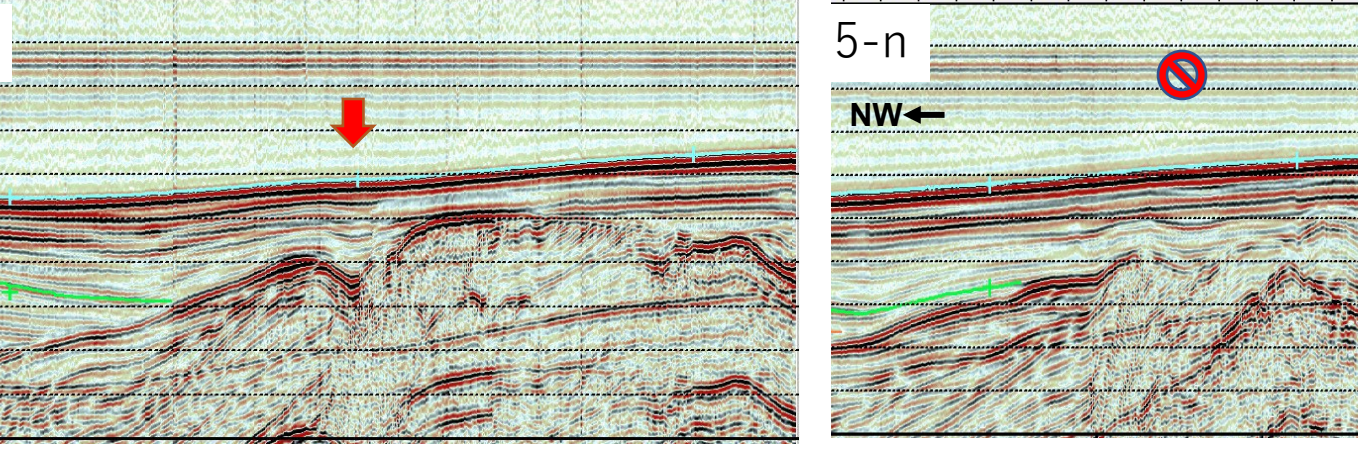
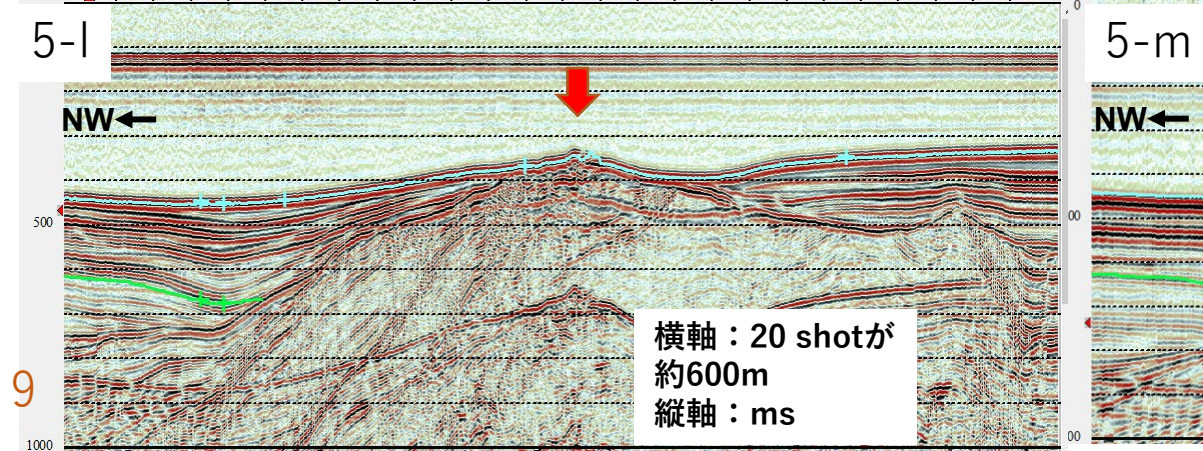
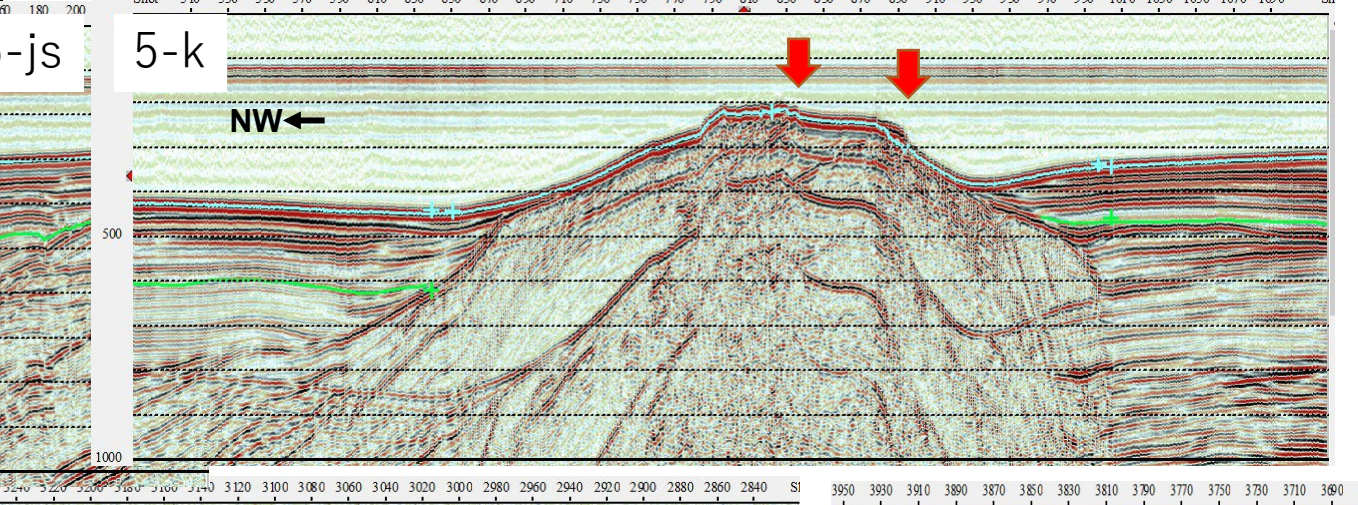
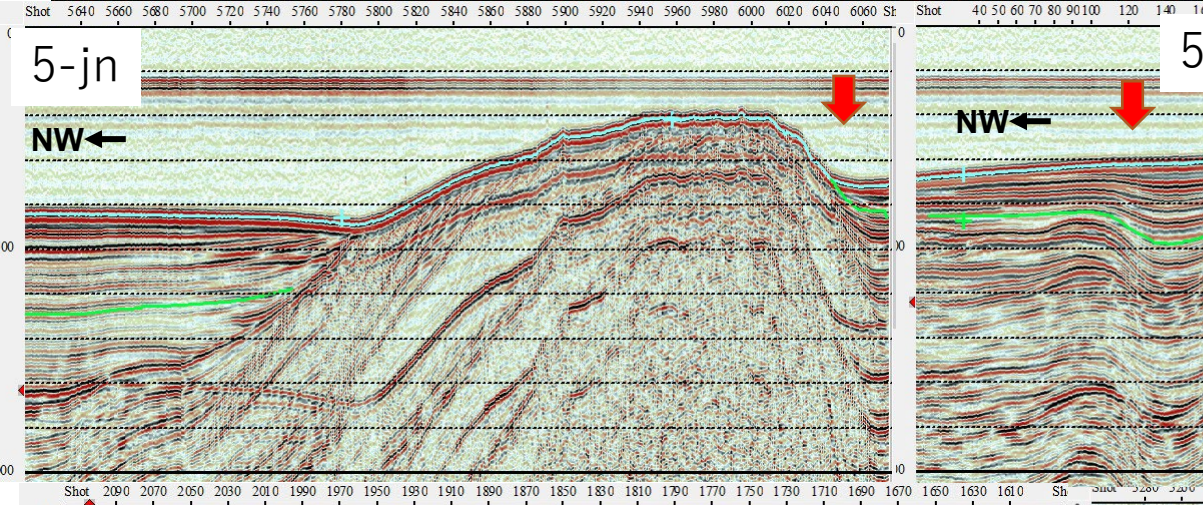
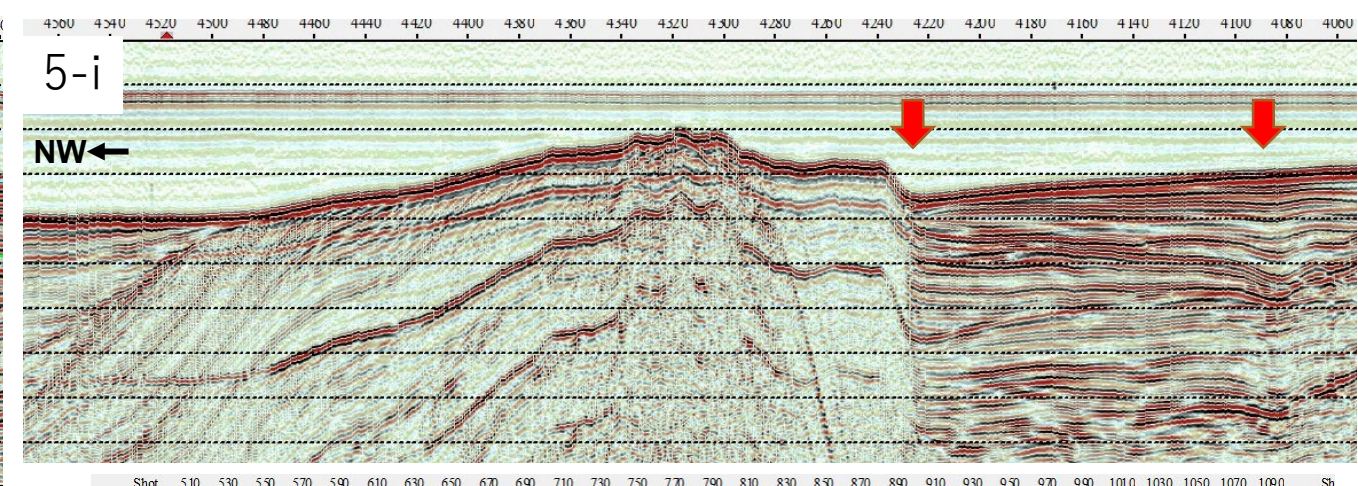
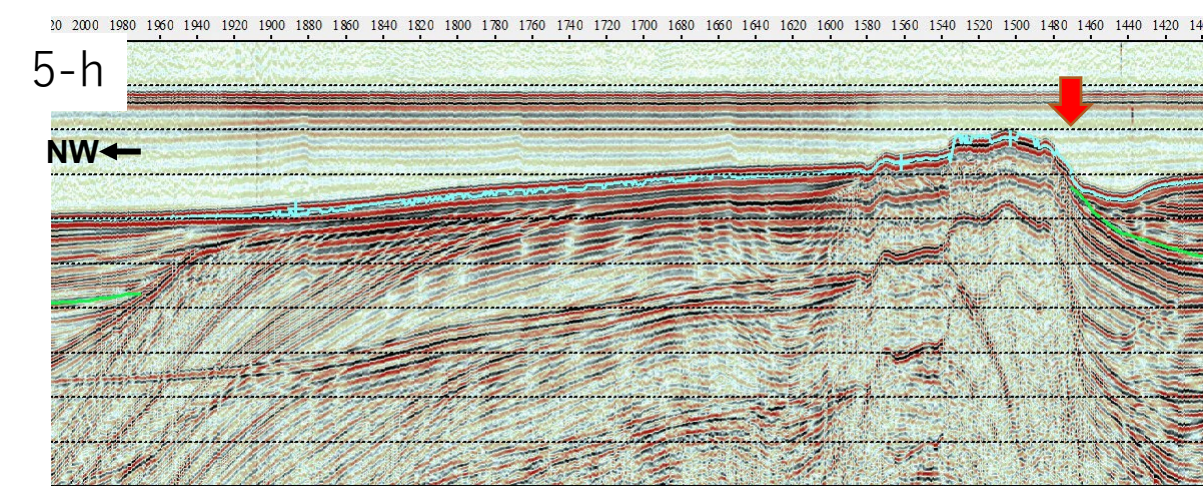
7

5

横軸：20 shotが  
約600m  
縦軸：ms

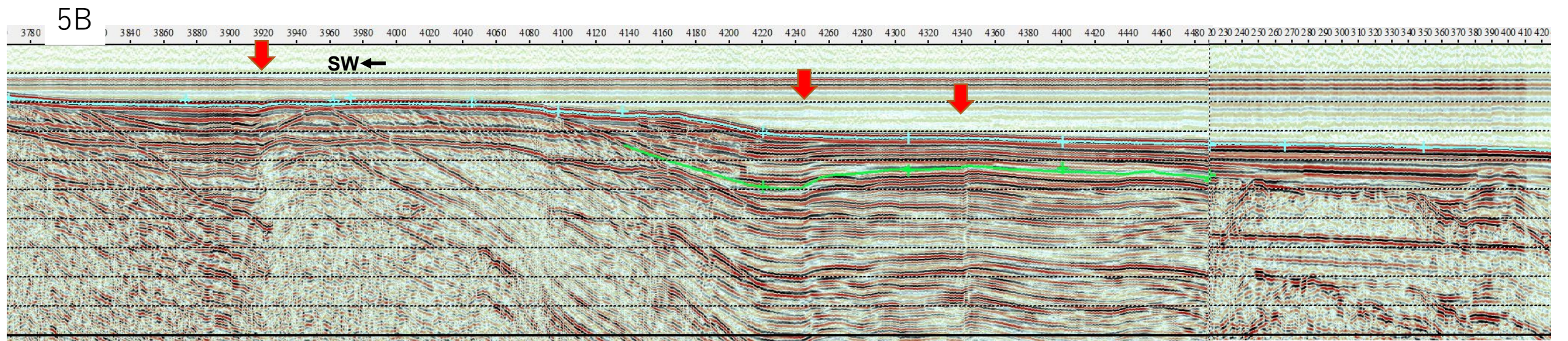
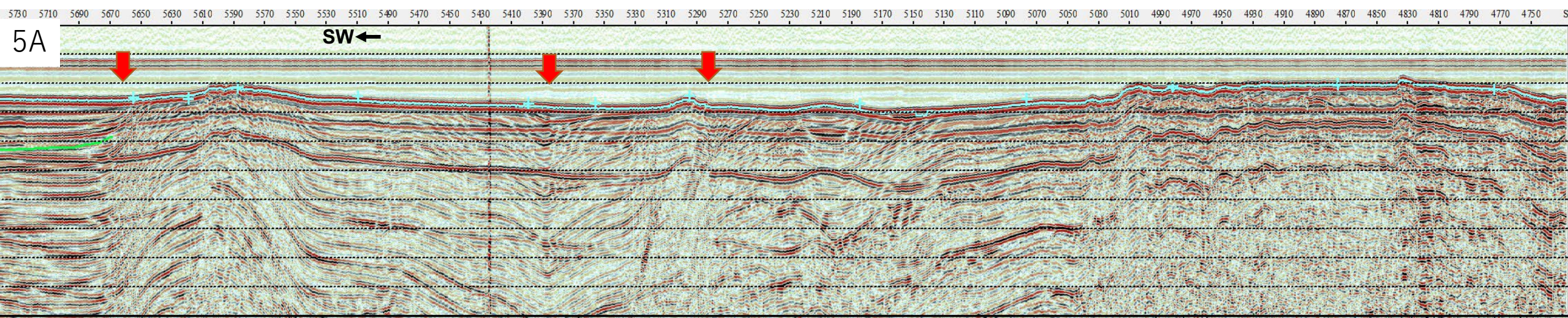




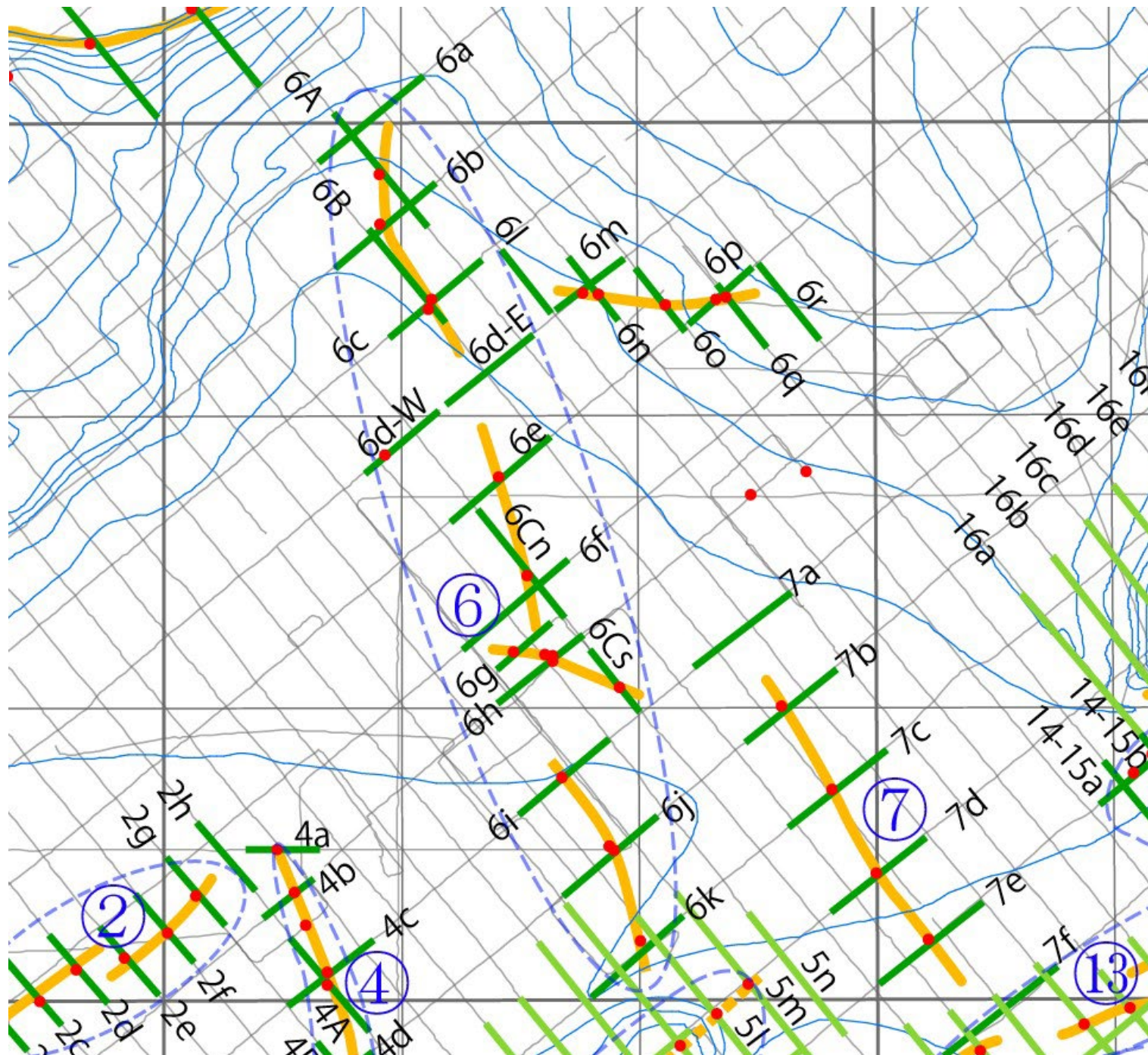


5

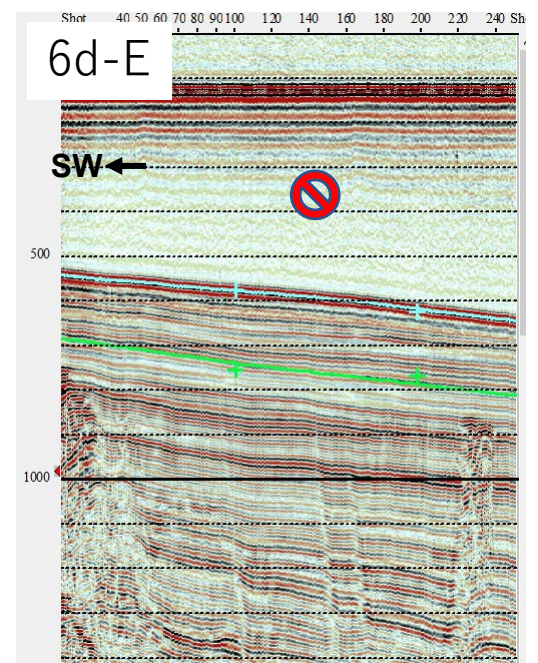
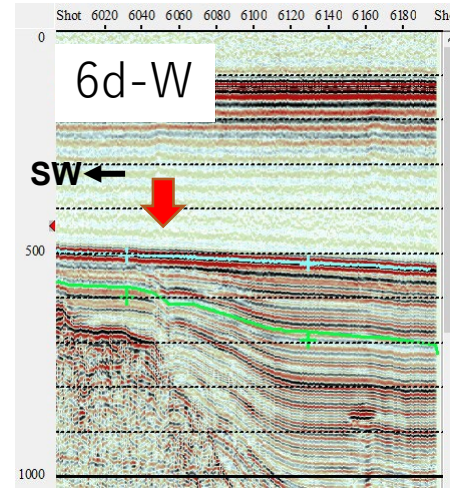
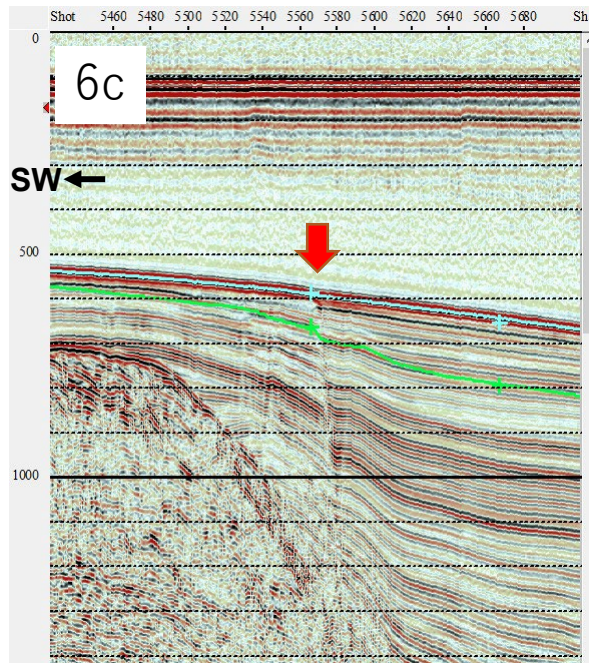
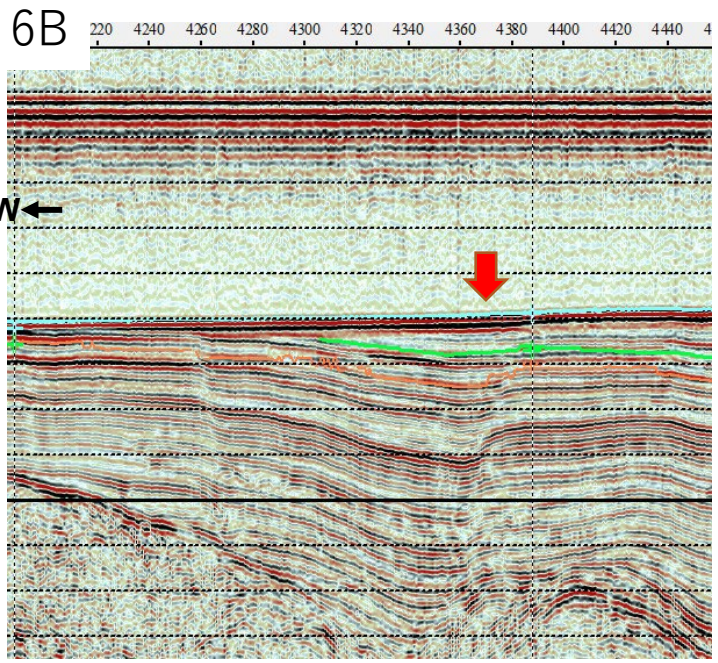
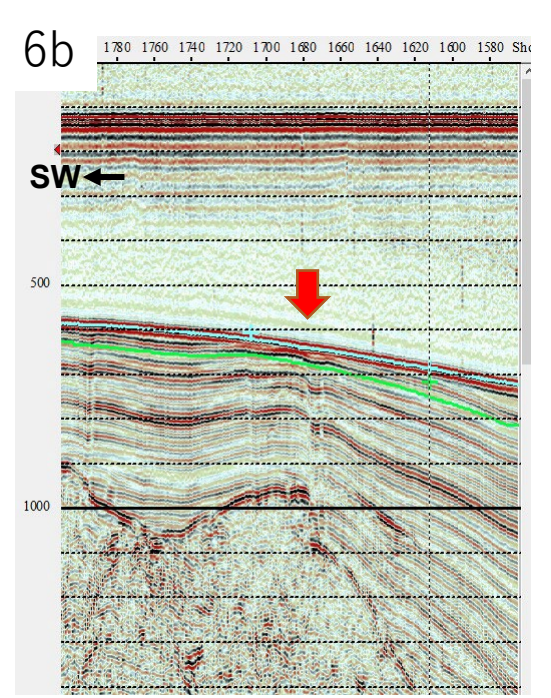
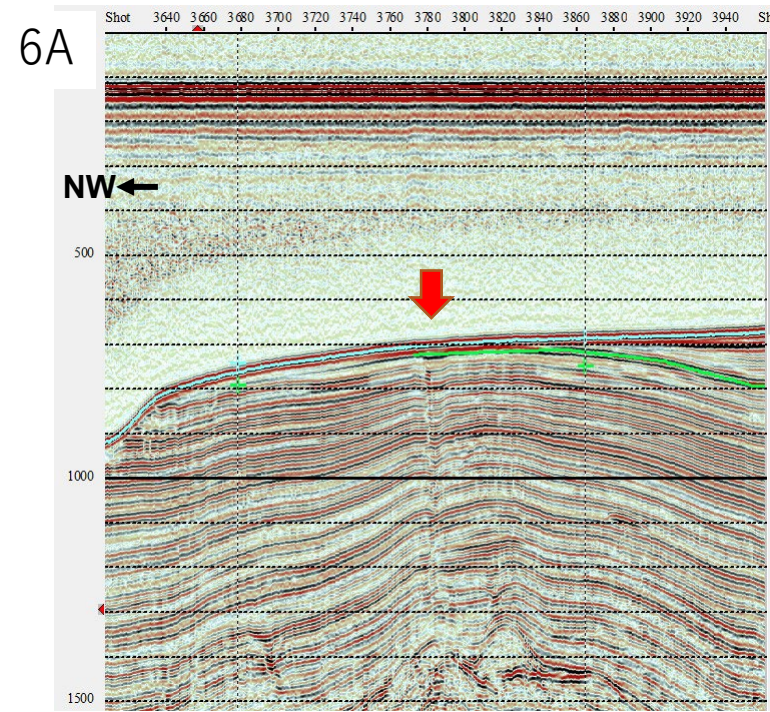
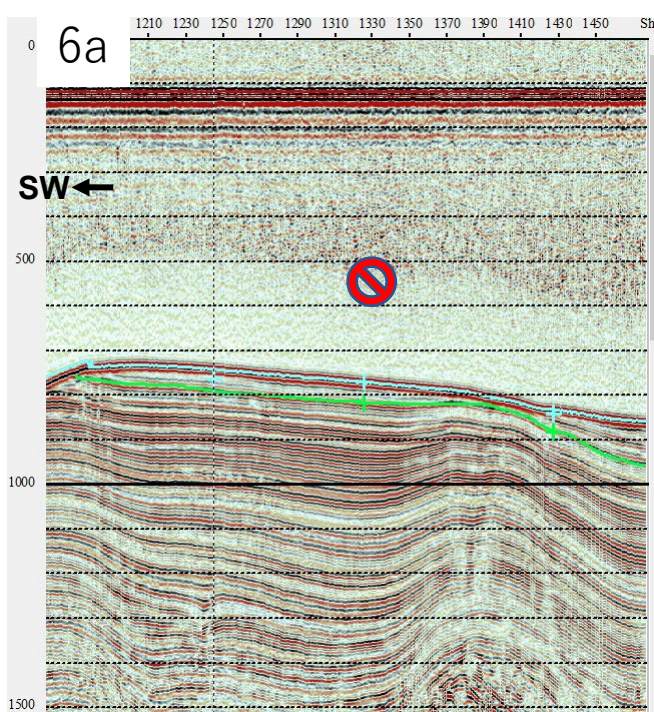
横軸：20 shotが  
約600m  
縦軸：ms



若狭湾北方

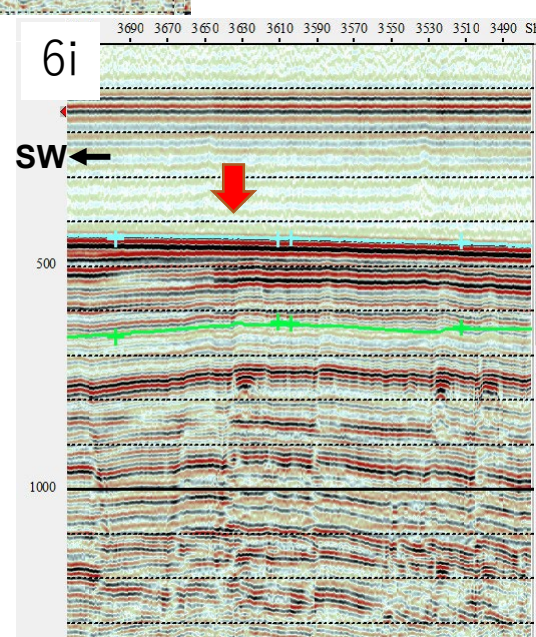
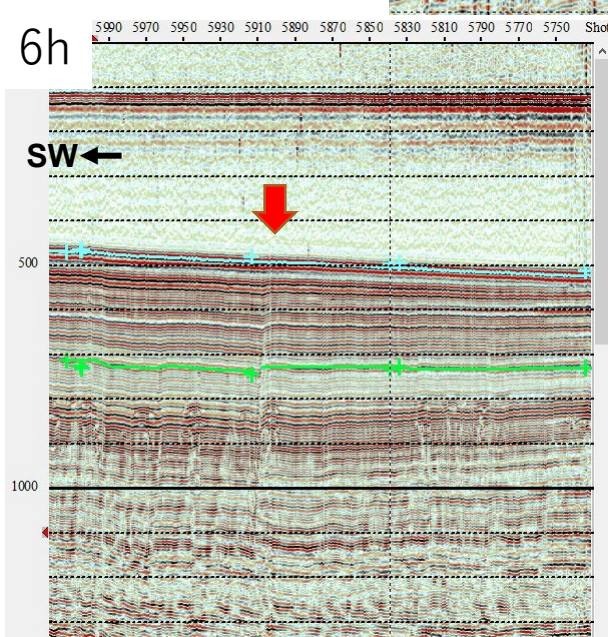
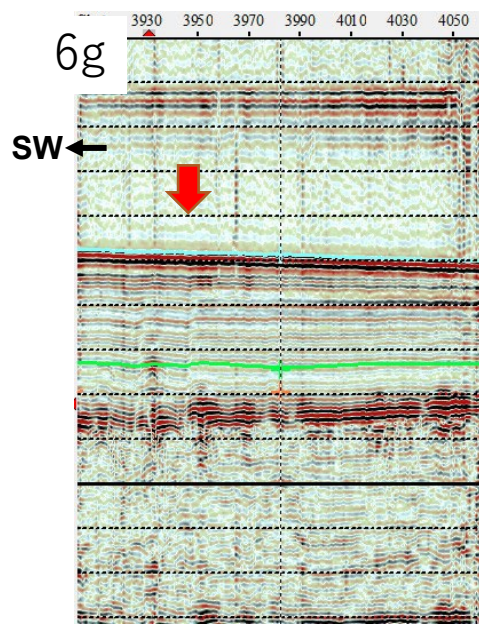
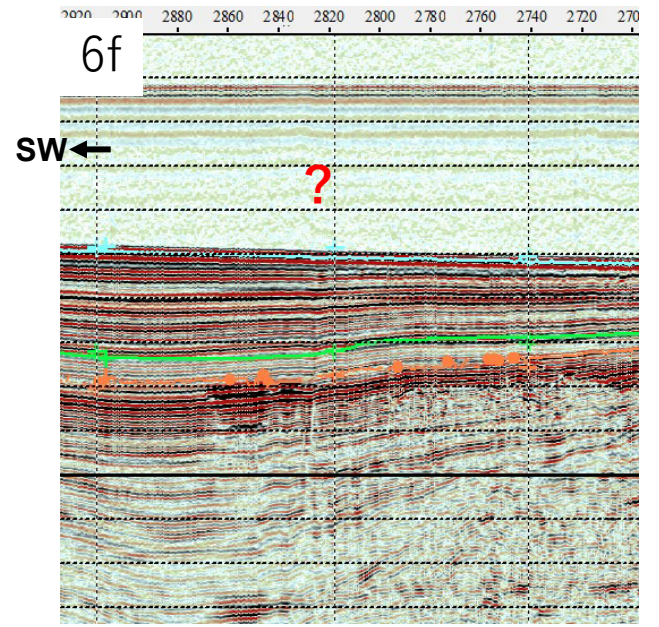
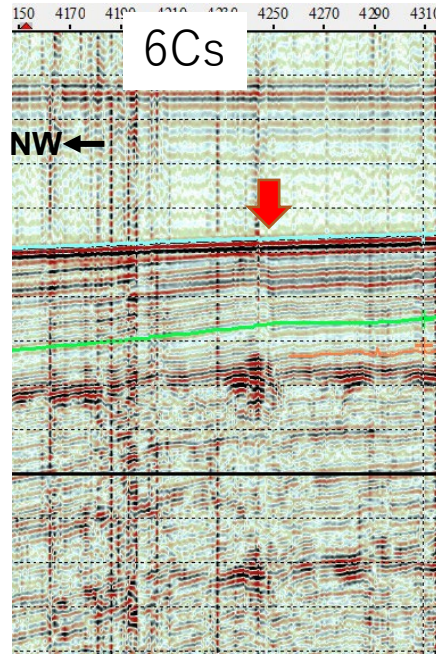
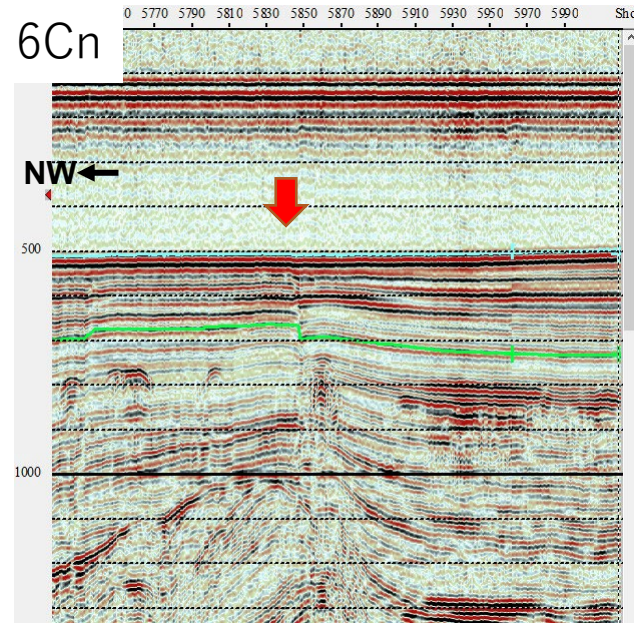
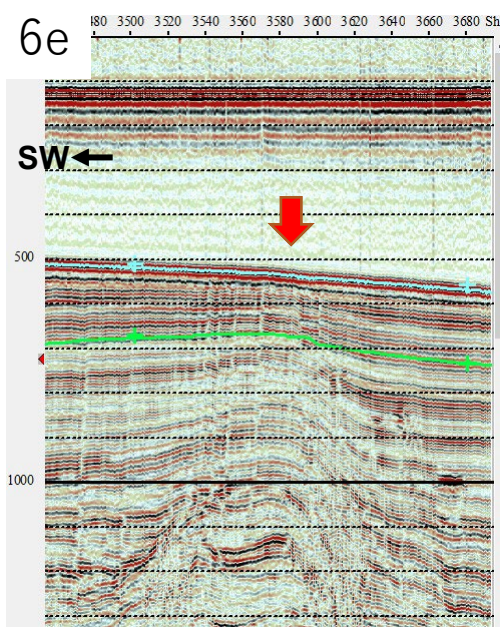


6

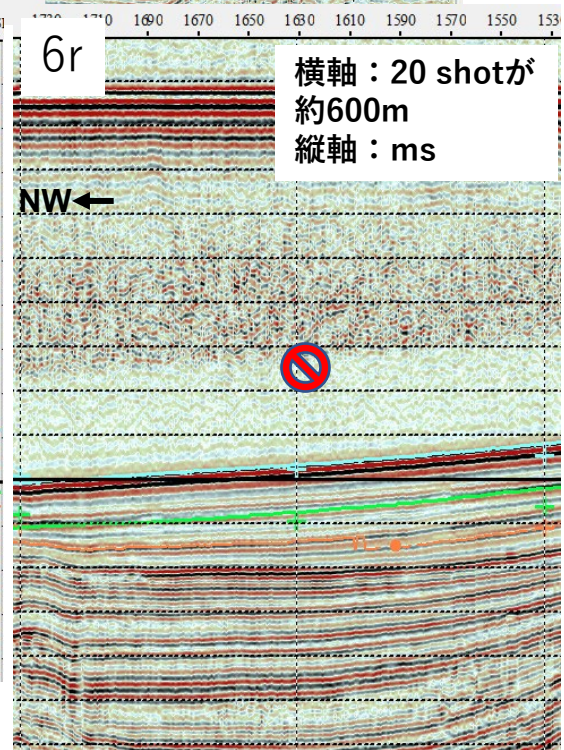
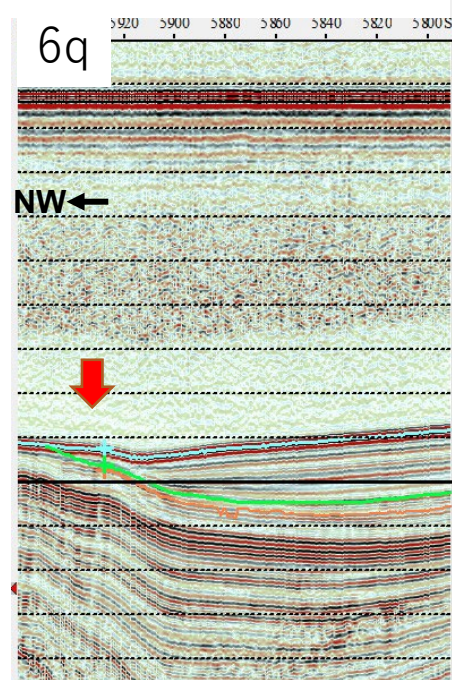
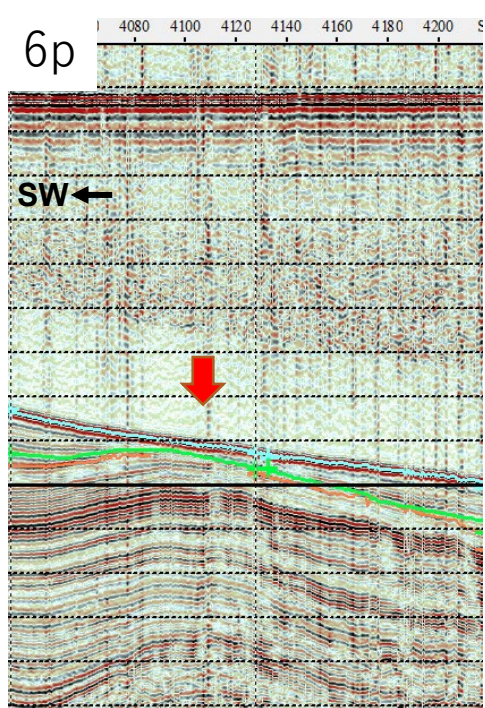
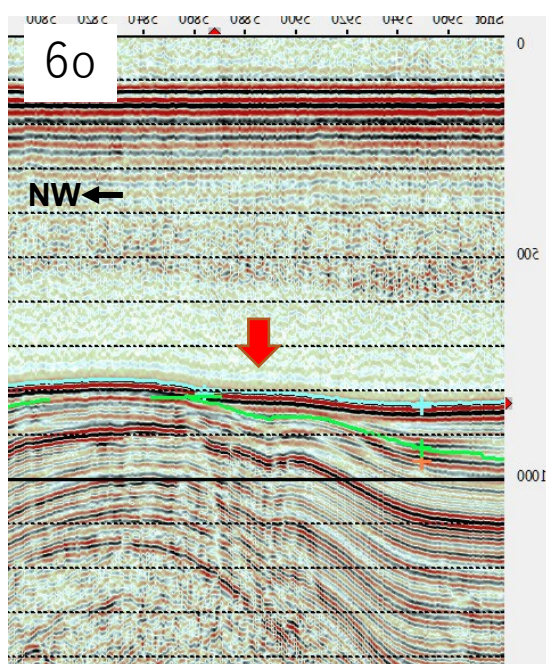
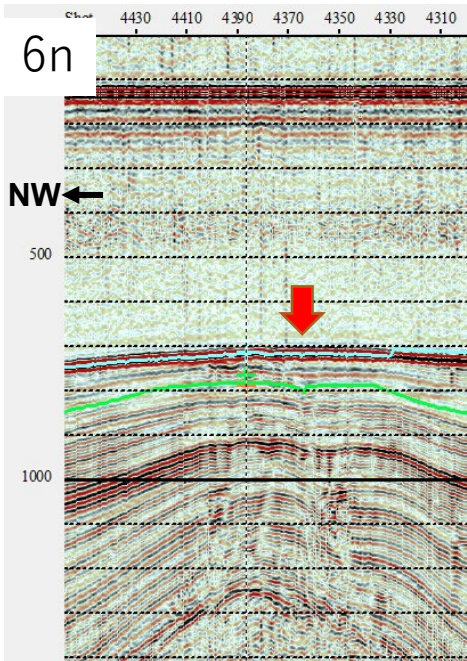
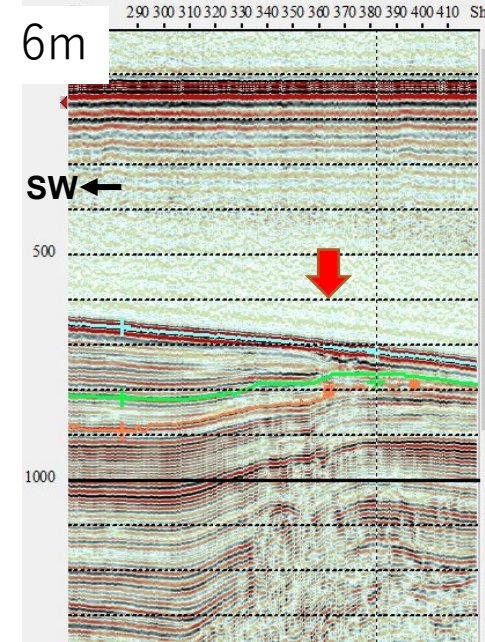
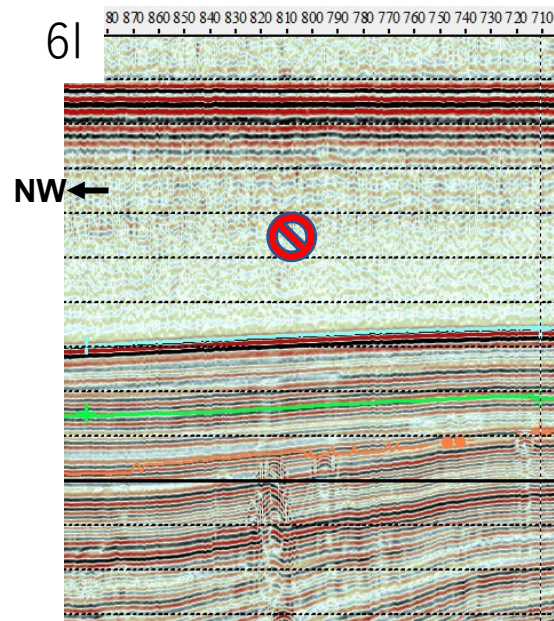
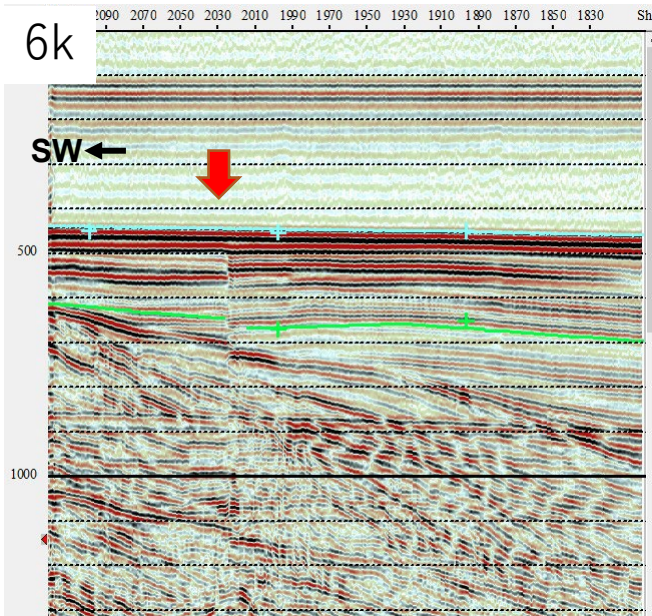
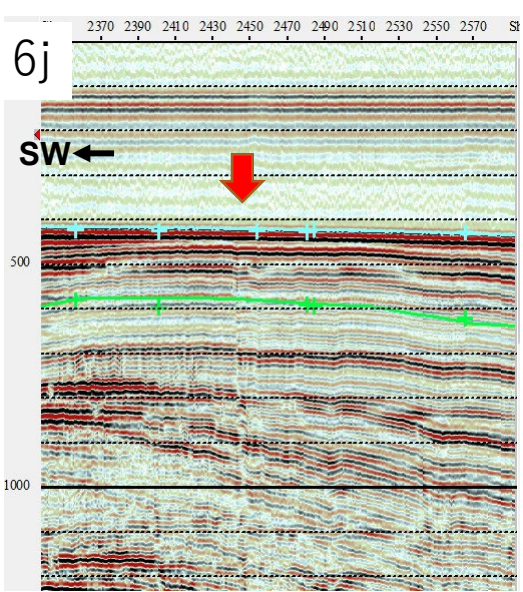


横軸：20 shotが  
約600m  
縦軸：ms

6

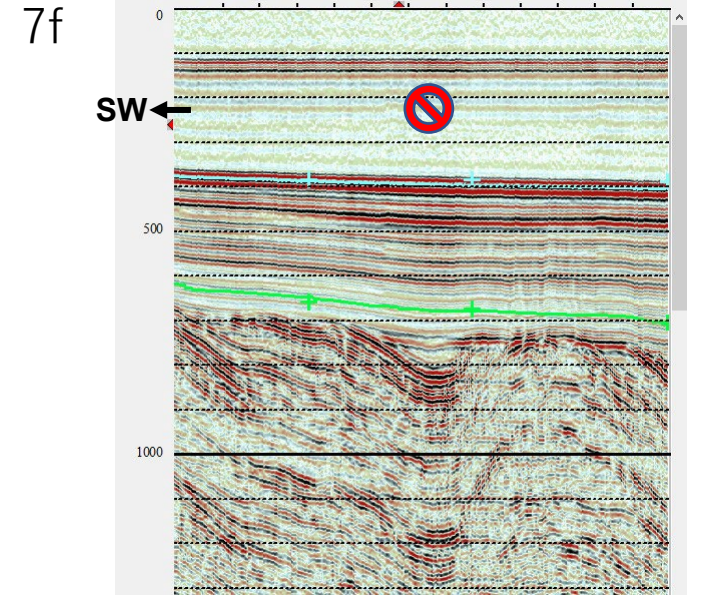
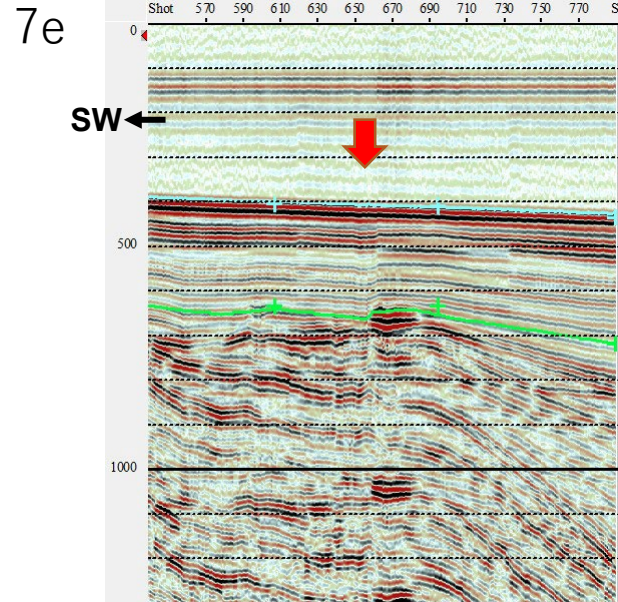
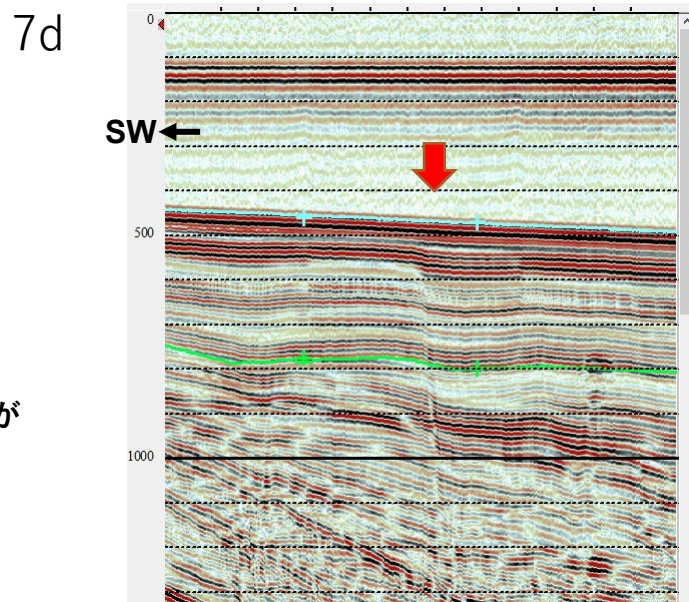
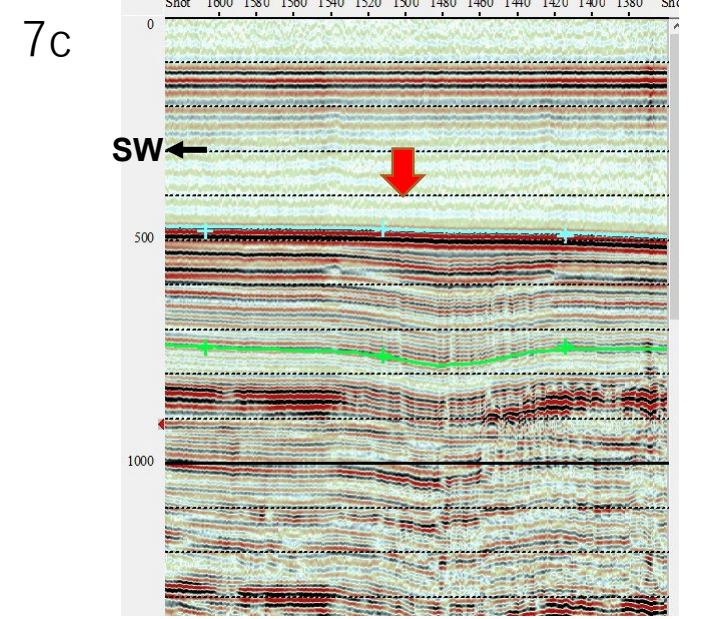
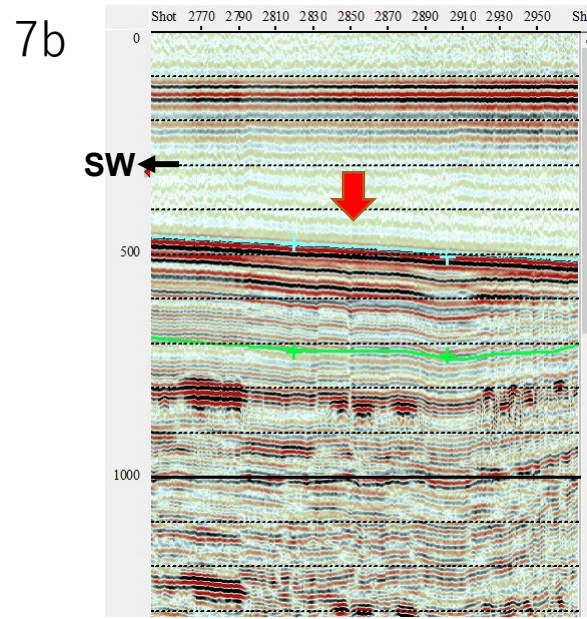
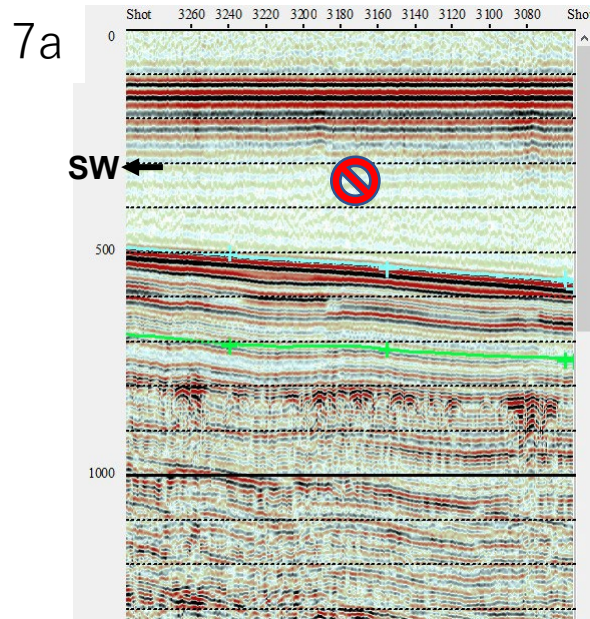


横軸：20 shotが  
約600m  
縦軸：ms



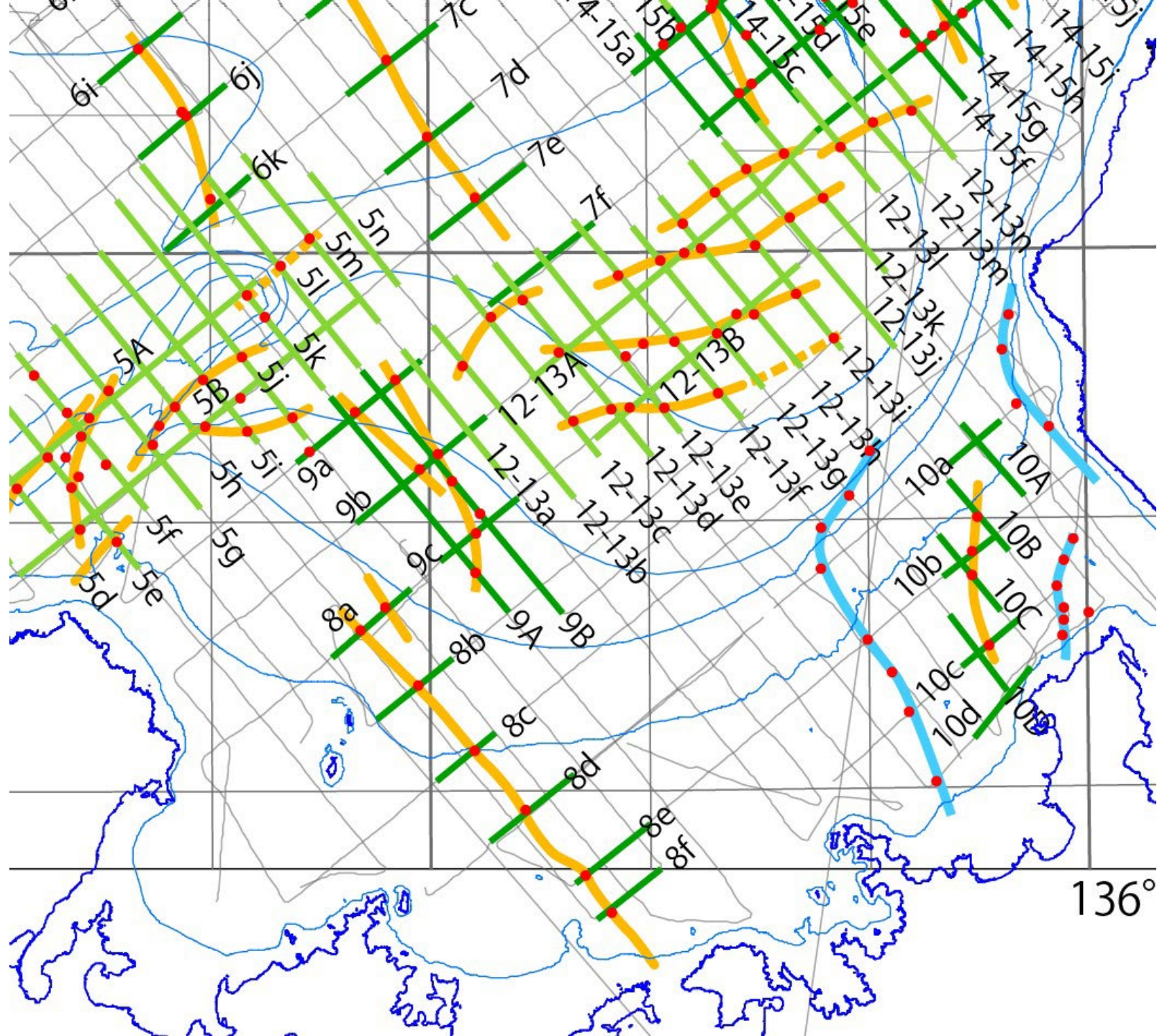
横軸：20 shotが  
約600m  
縦軸：ms

7



横軸：20 shotが  
約600m  
縦軸：ms

若狭湾



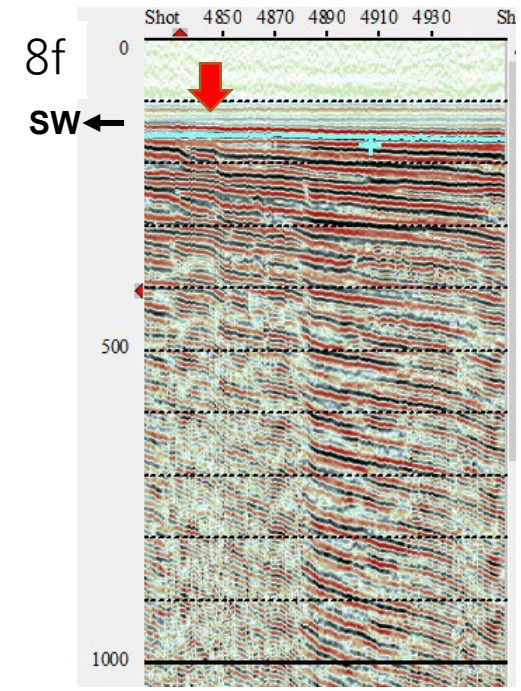
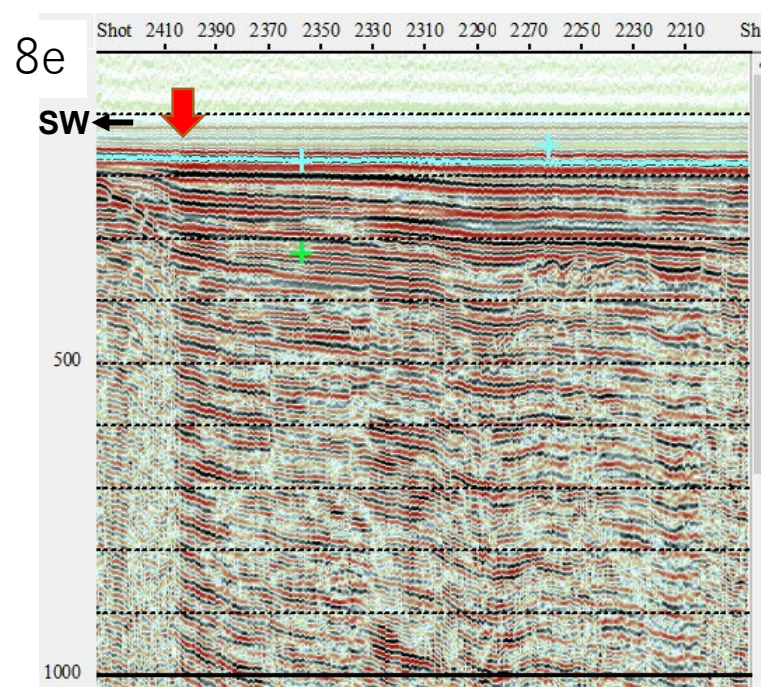
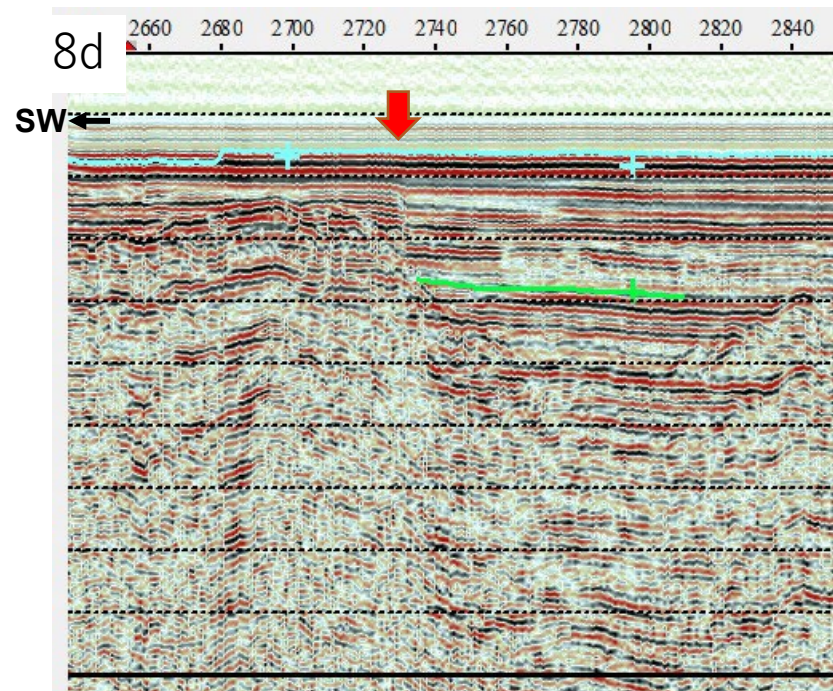
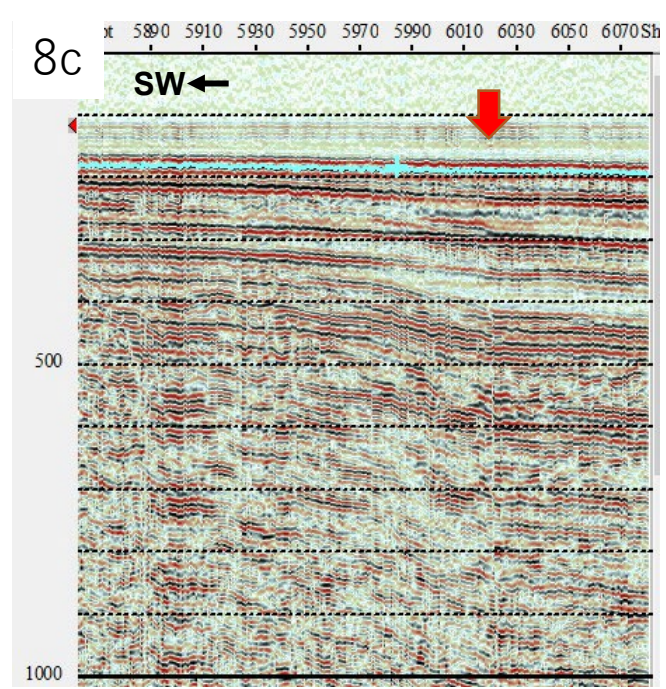
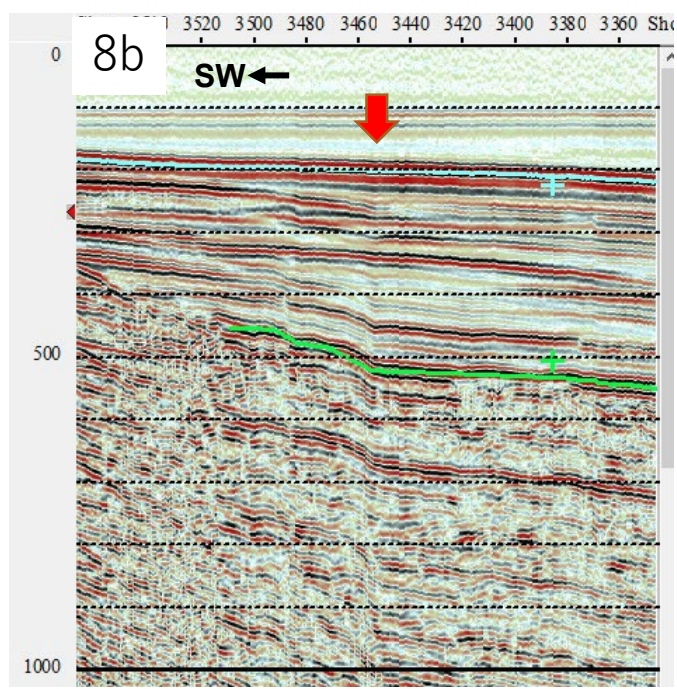
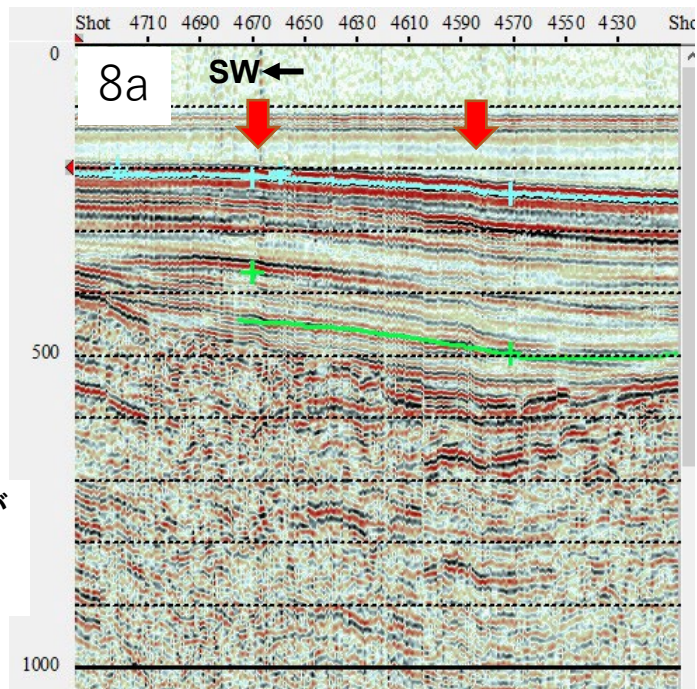


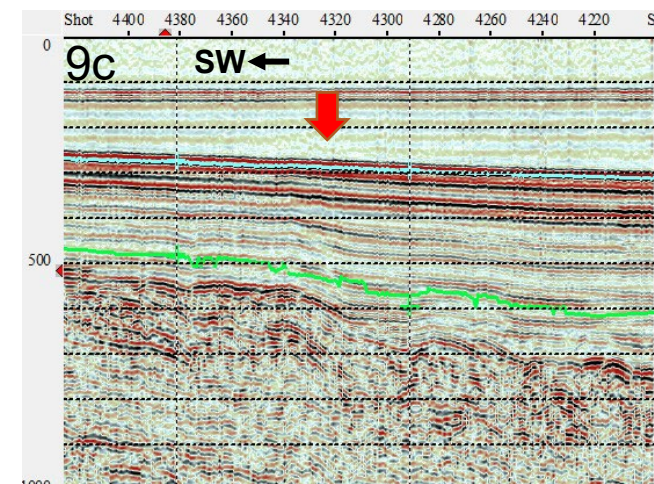
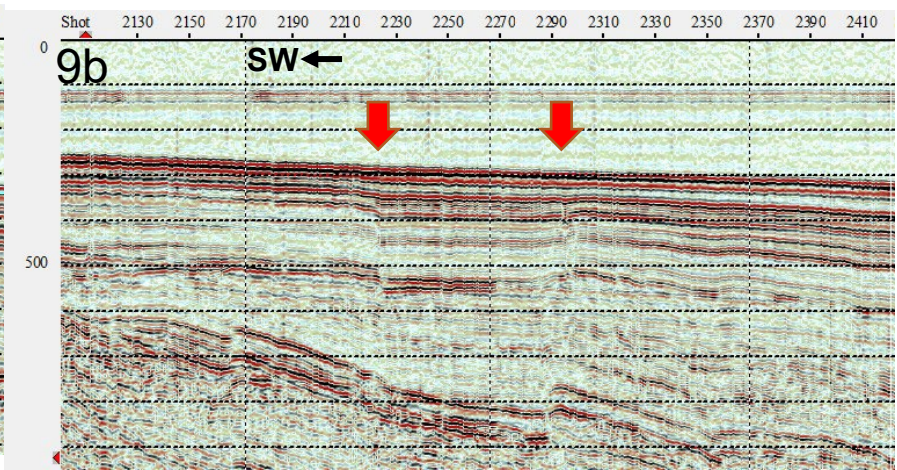
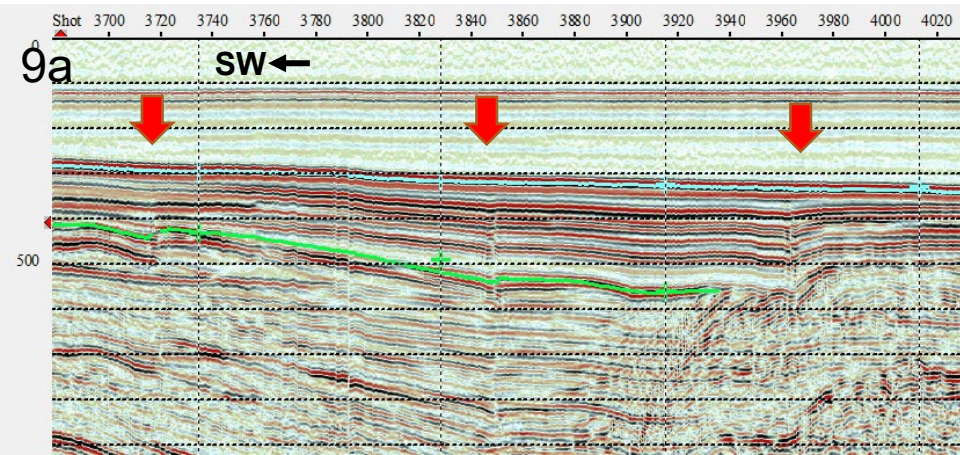




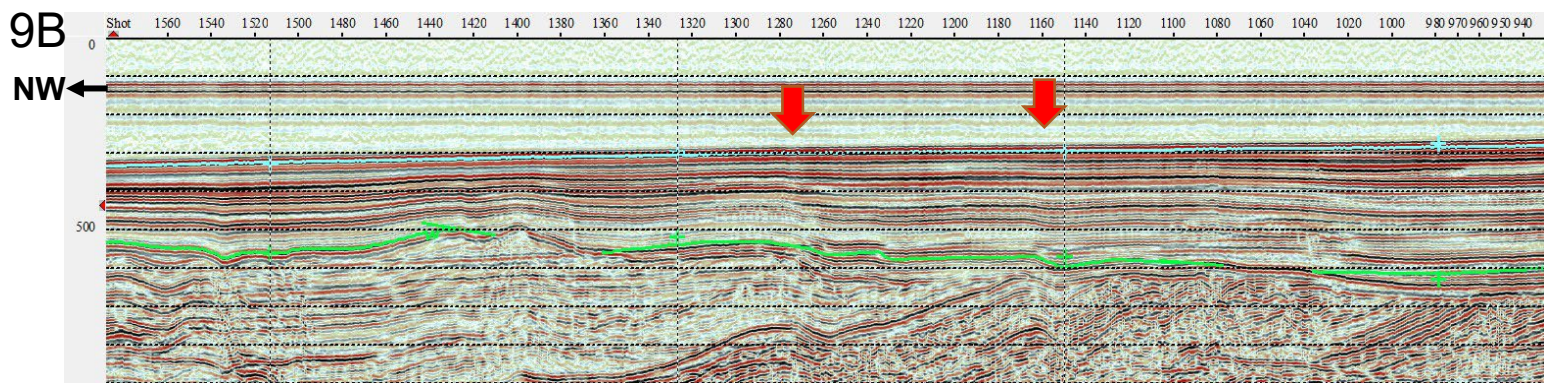
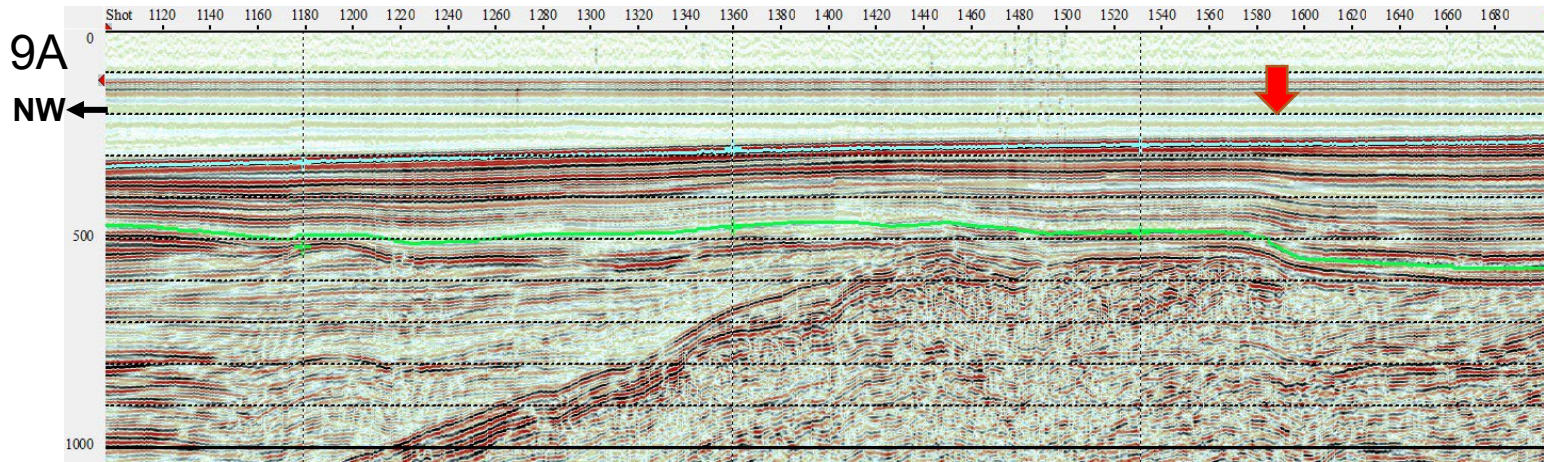
8

横軸：20 shotが  
約600m  
縦軸：ms



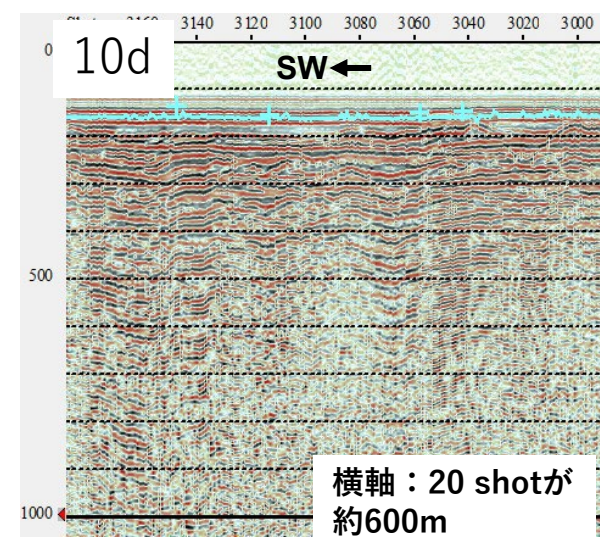
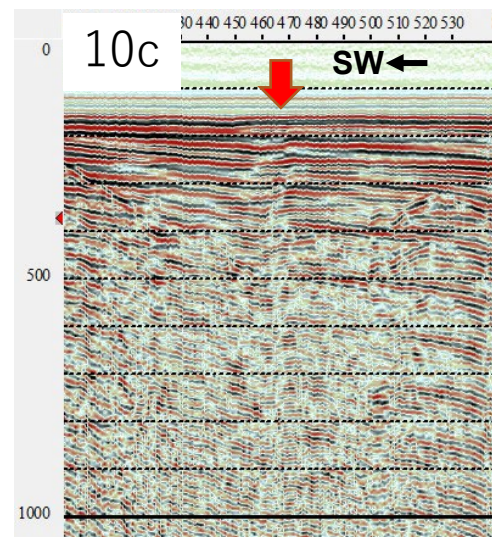
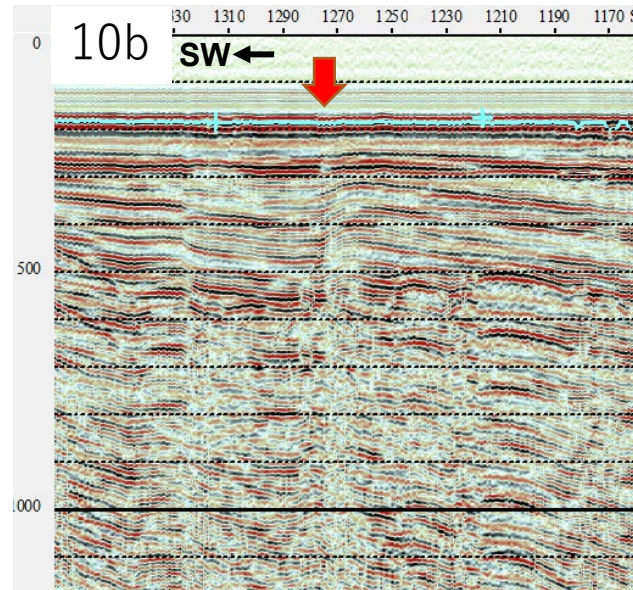
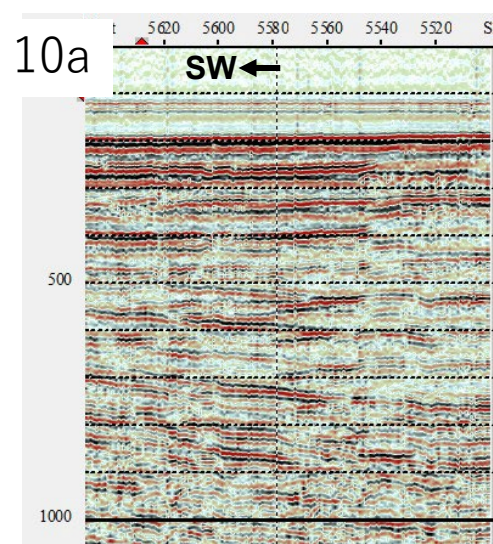
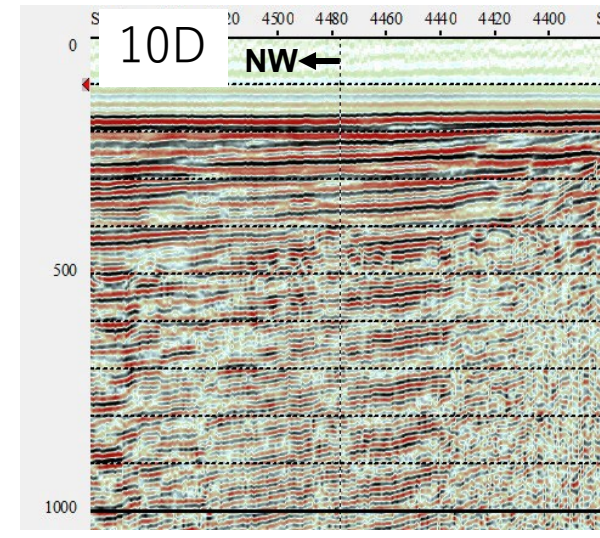
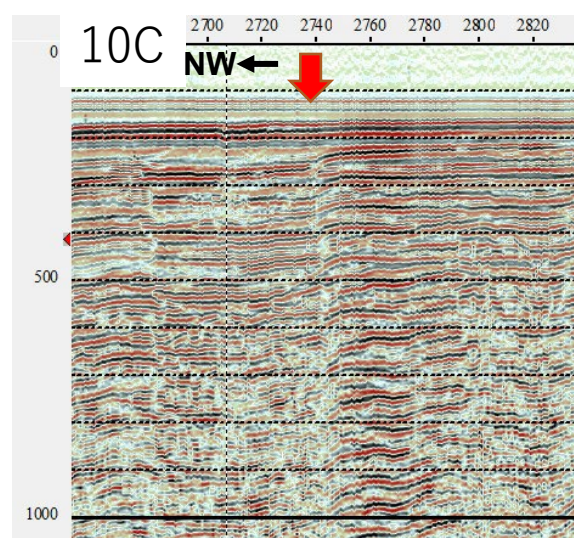
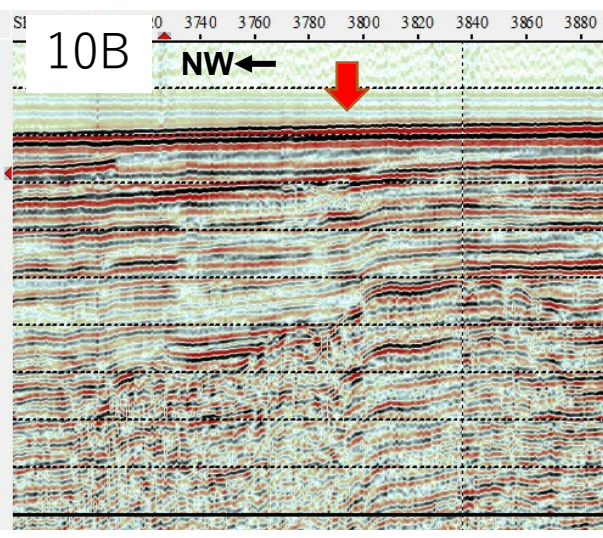
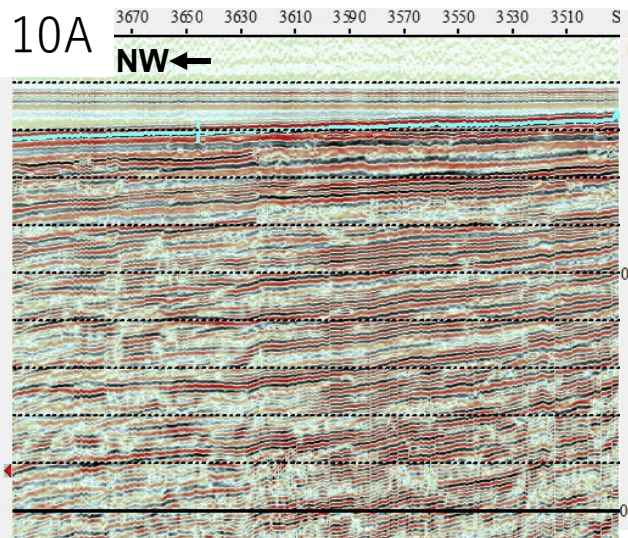


9



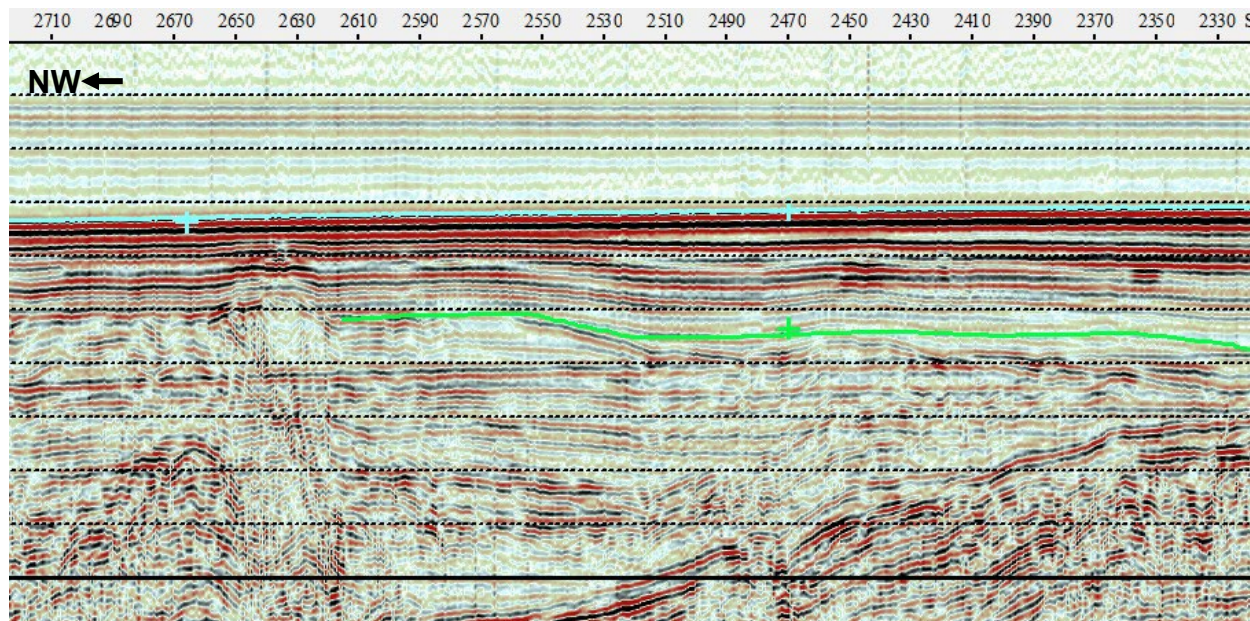
横軸：20 shotが  
約600m  
縦軸：ms

10



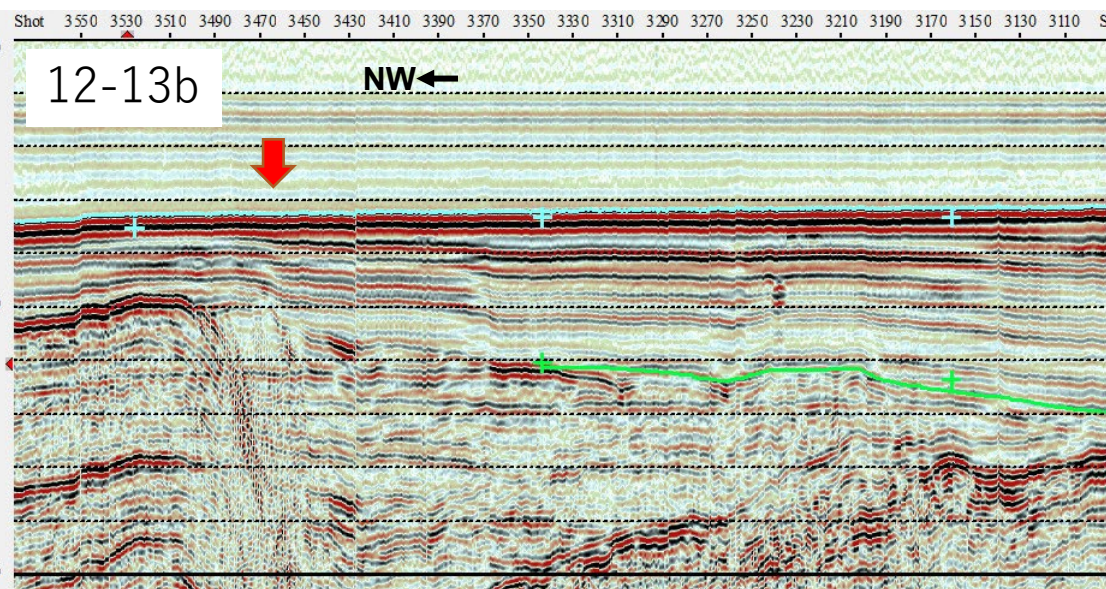
横軸：20 shotが  
約600m  
縦軸：ms

12-13a

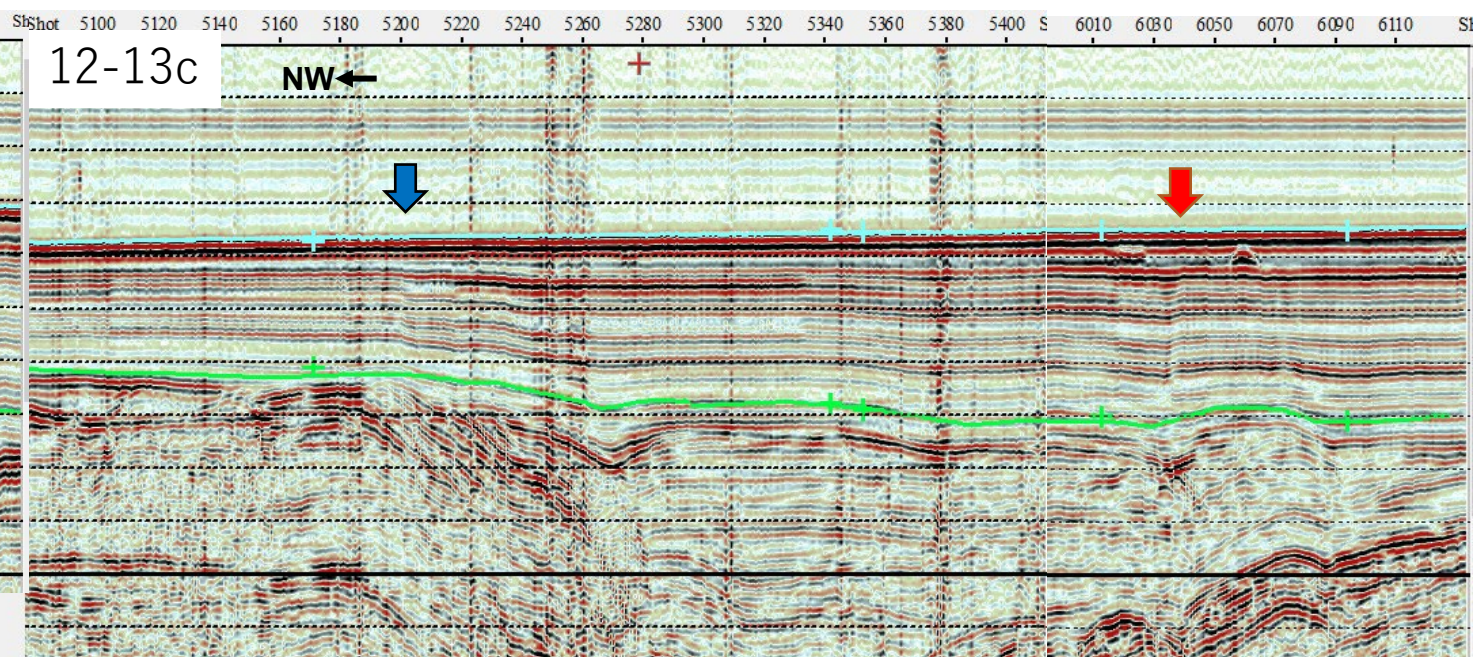


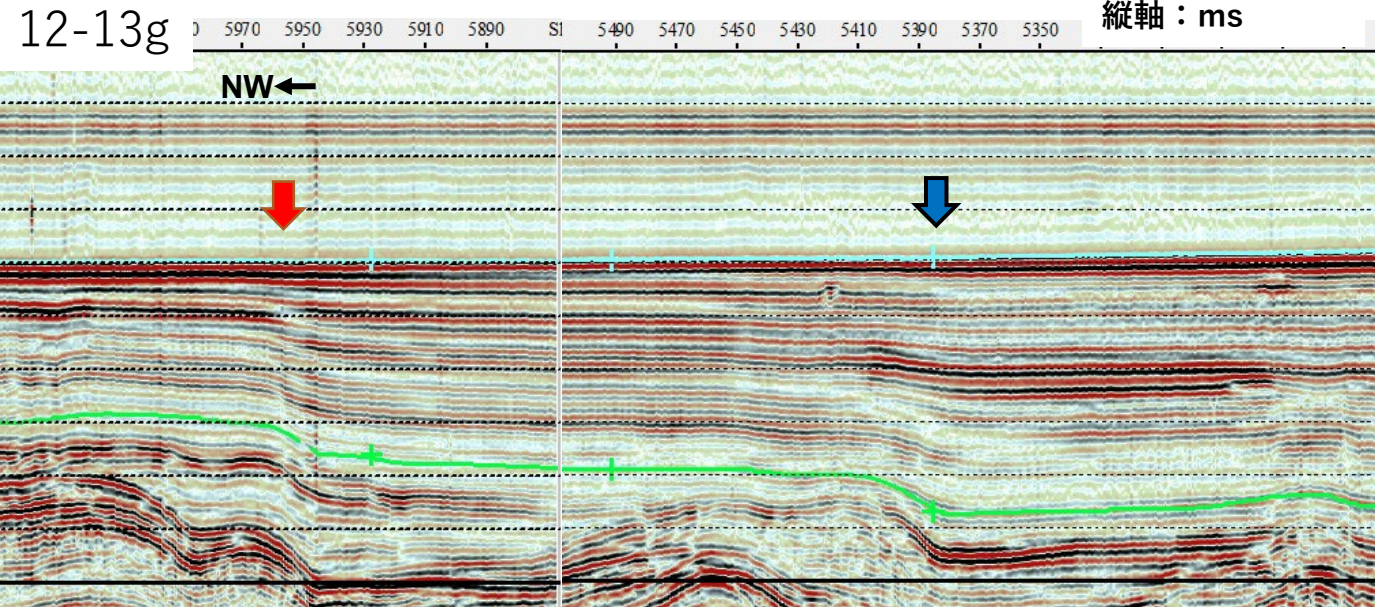
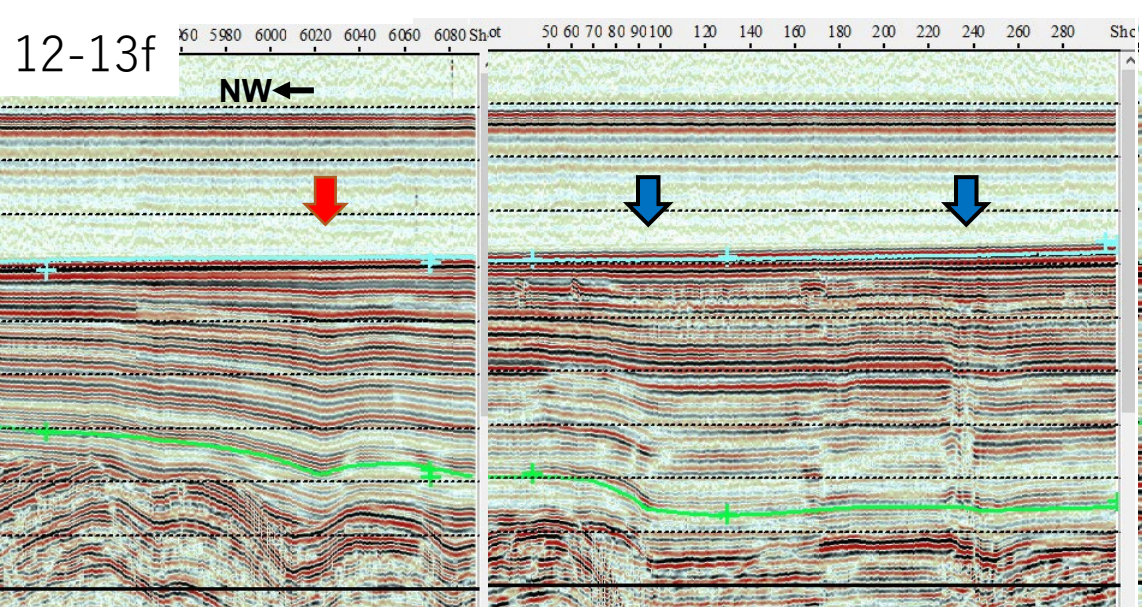
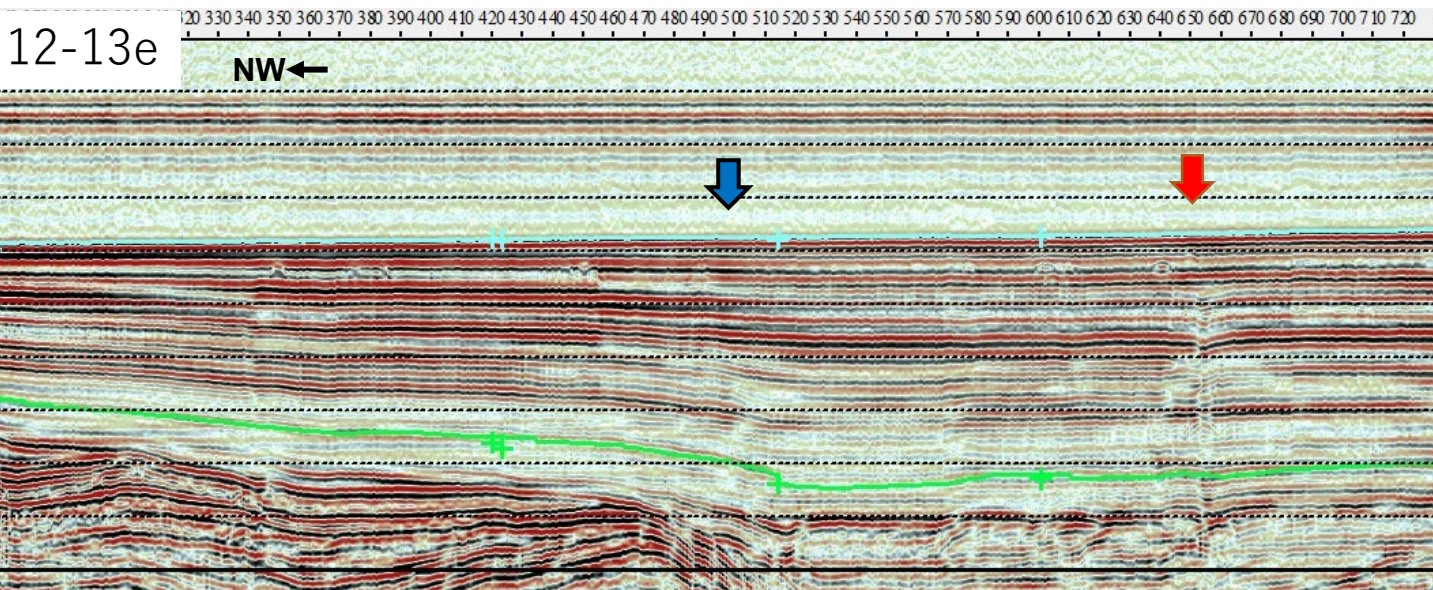
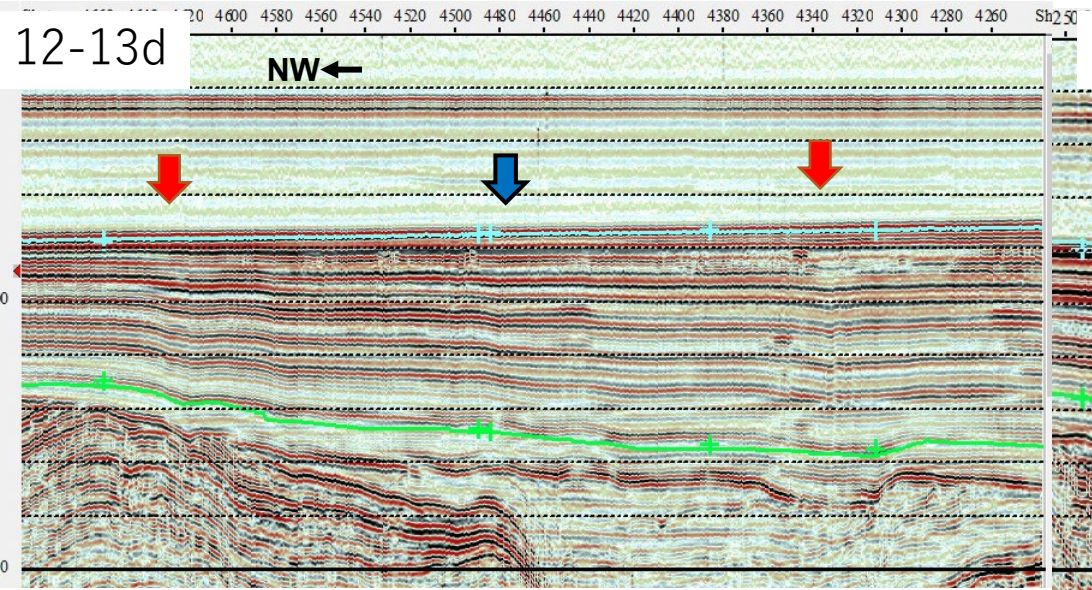
横軸：20 shotが  
約600m  
縦軸：ms

12-13b

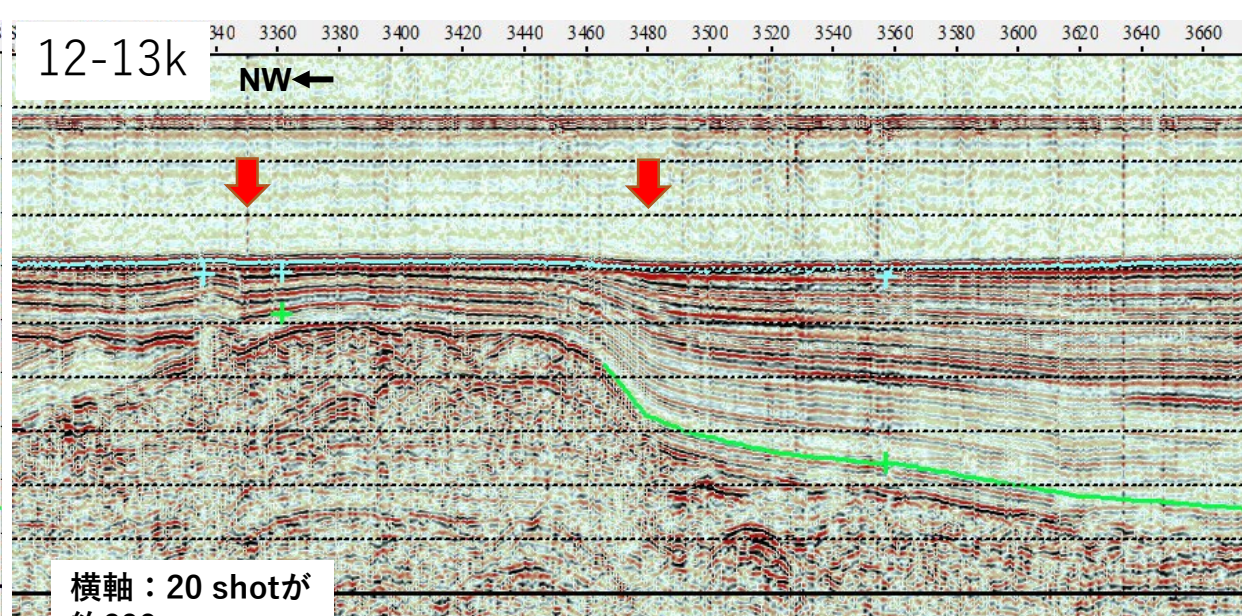
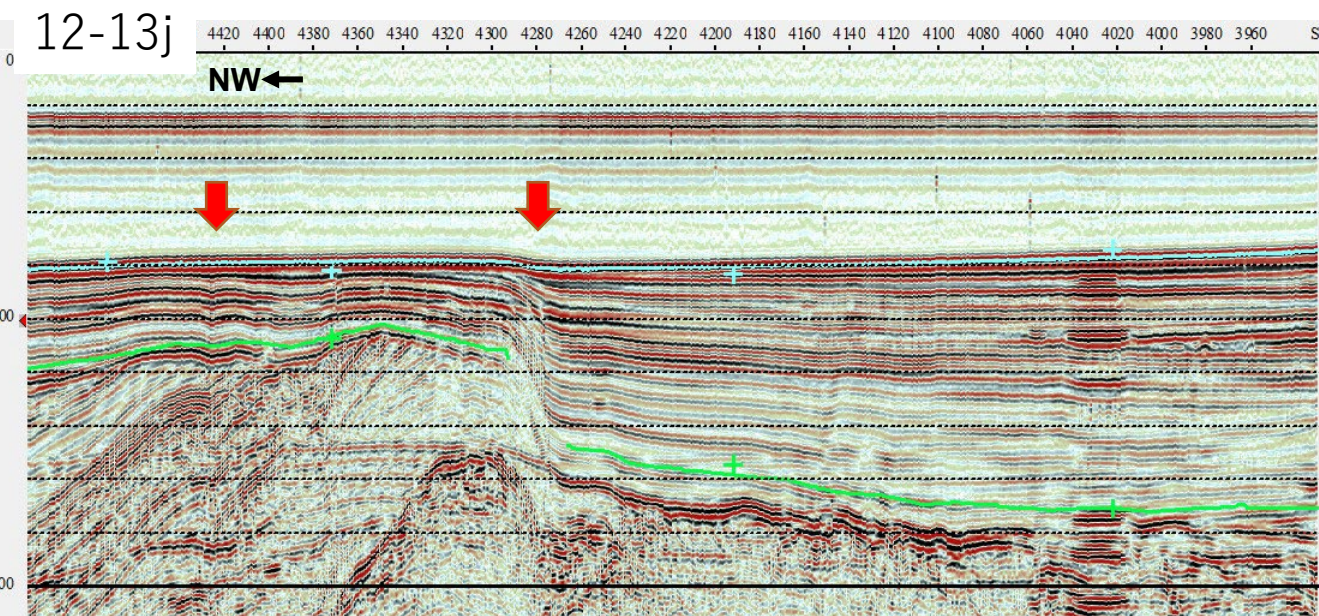
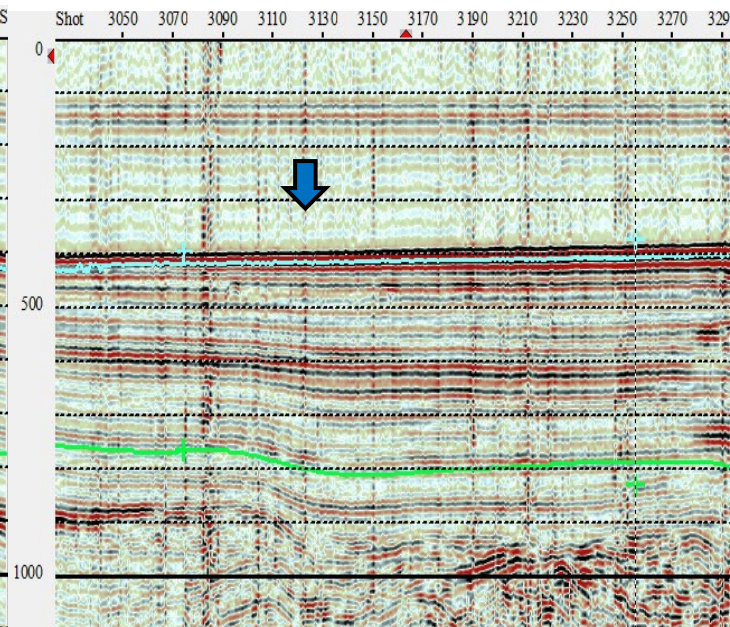
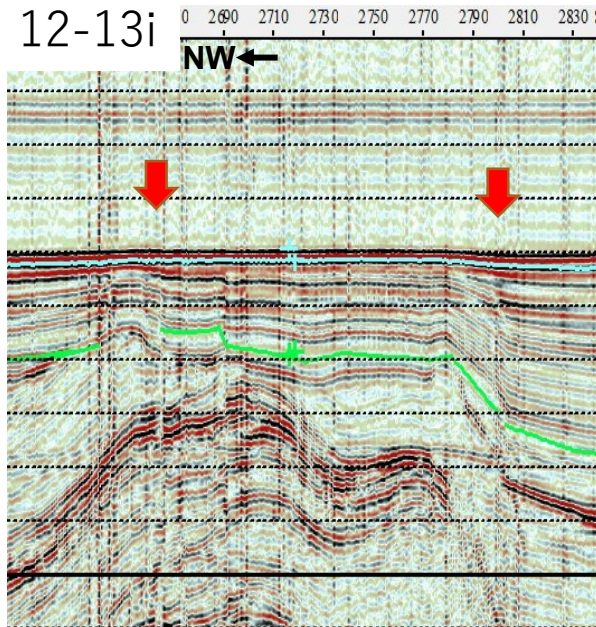
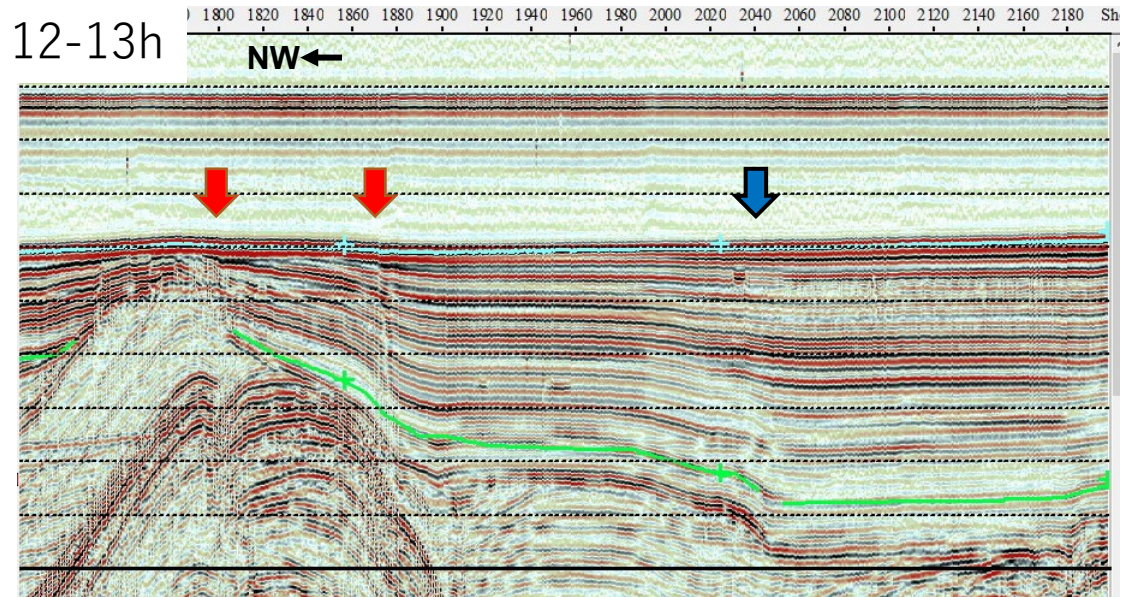


12-13c



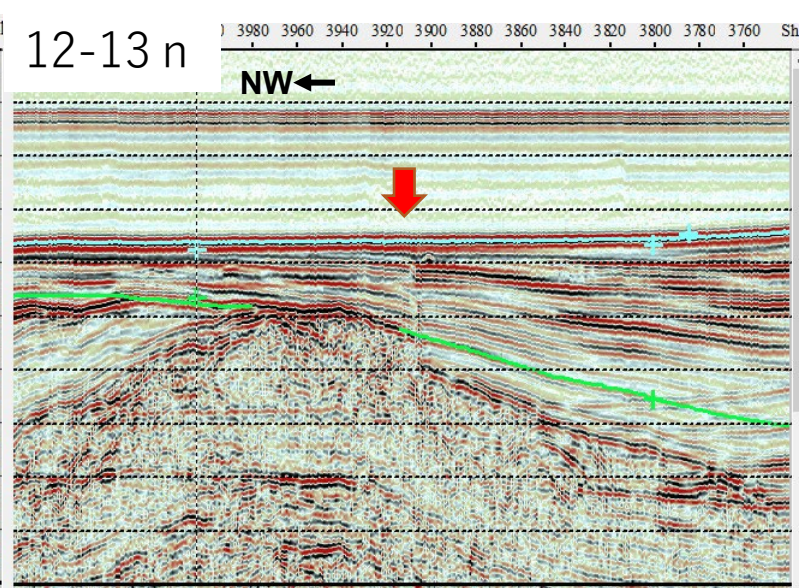
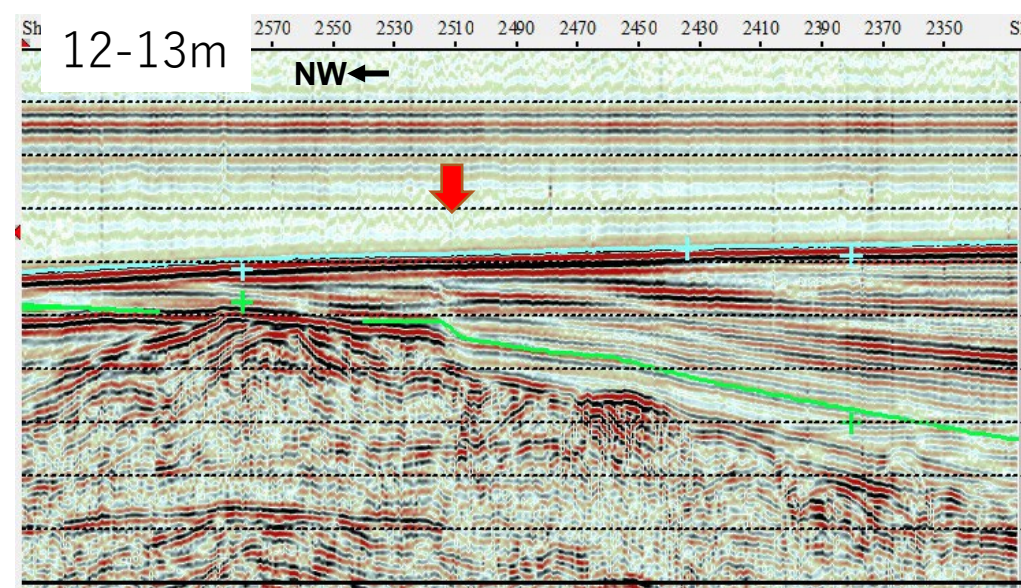
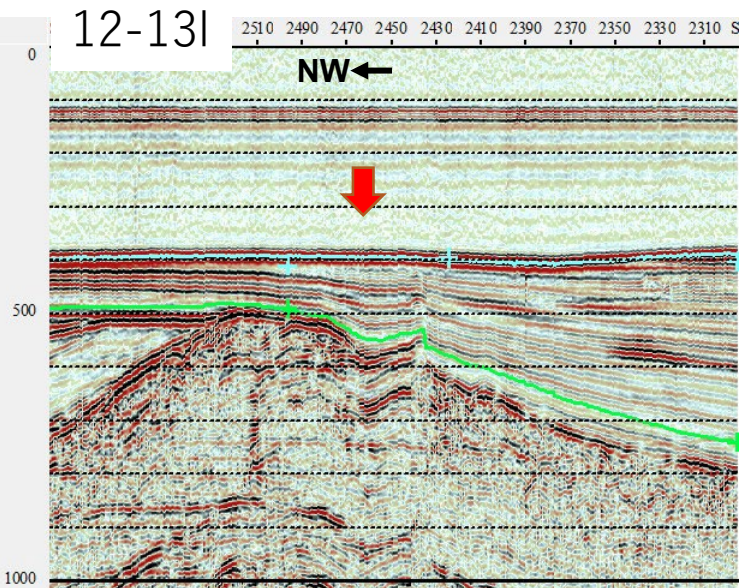


横軸：20 shotが  
約600m  
縦軸：ms



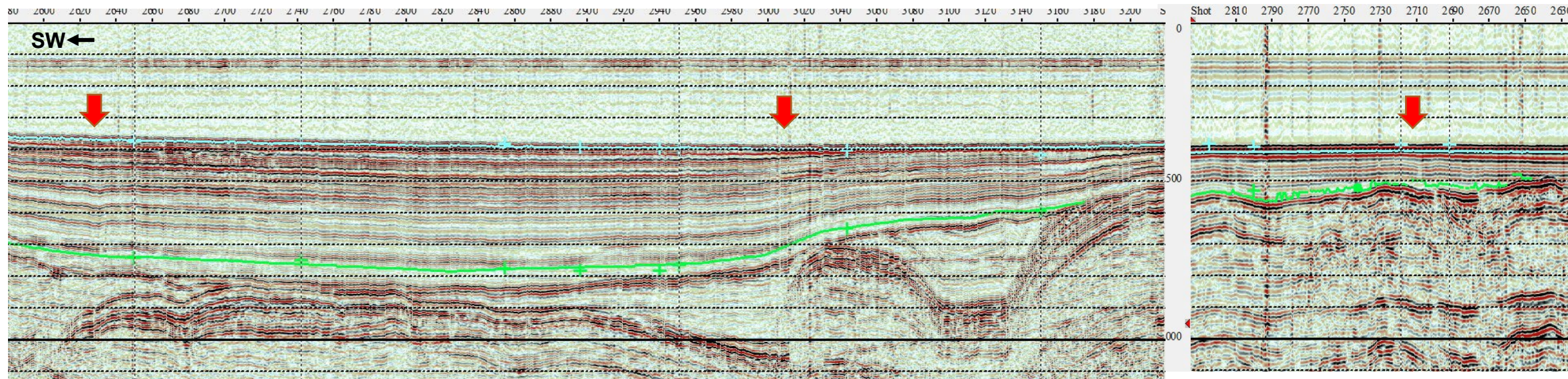
横軸：20 shotが  
約600m  
縦軸：ms





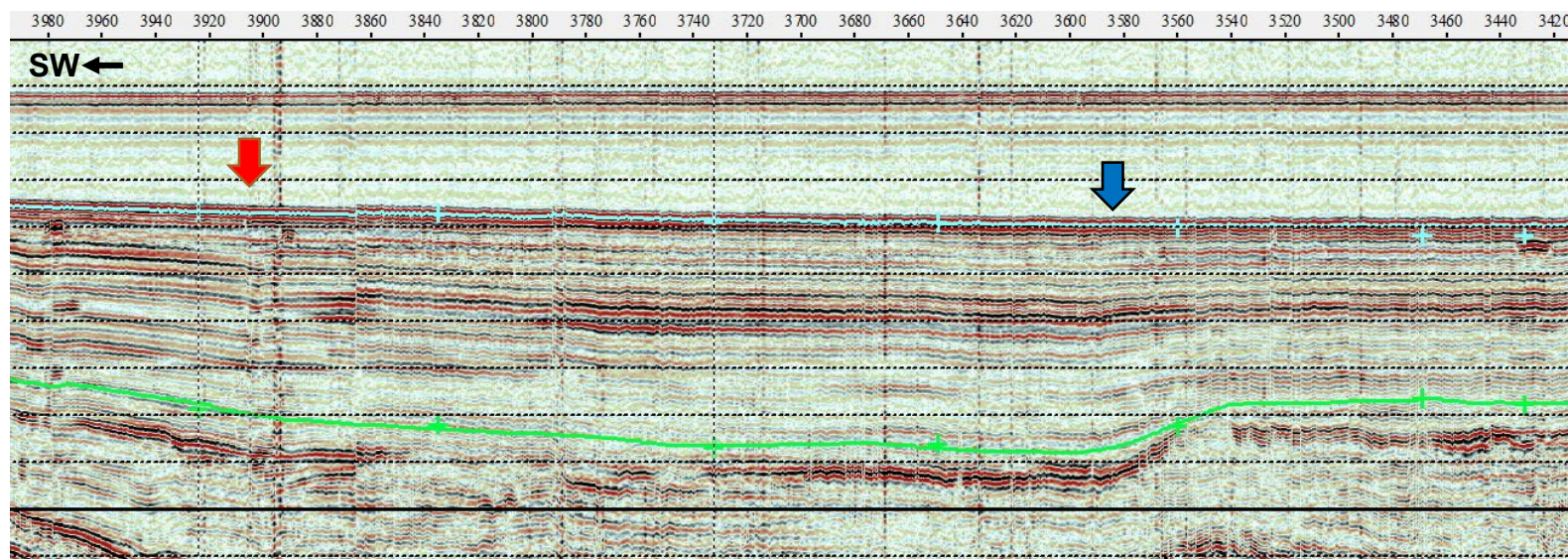
横軸：20 shotが  
 約600m  
 縦軸：ms

# 12-13A



# 12-13B

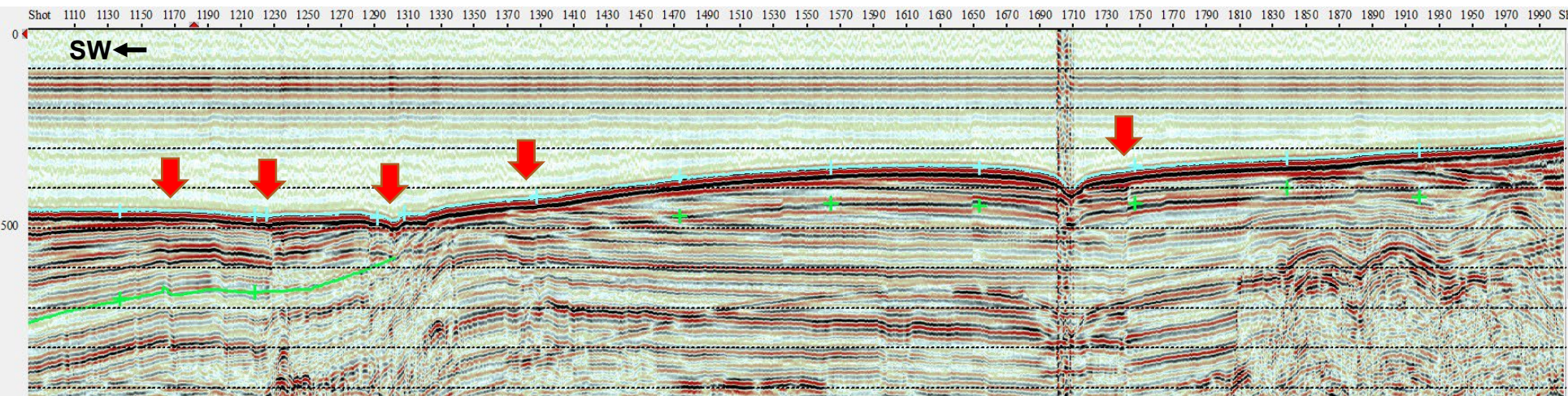
横軸：20 shotが  
約600m  
縦軸：ms



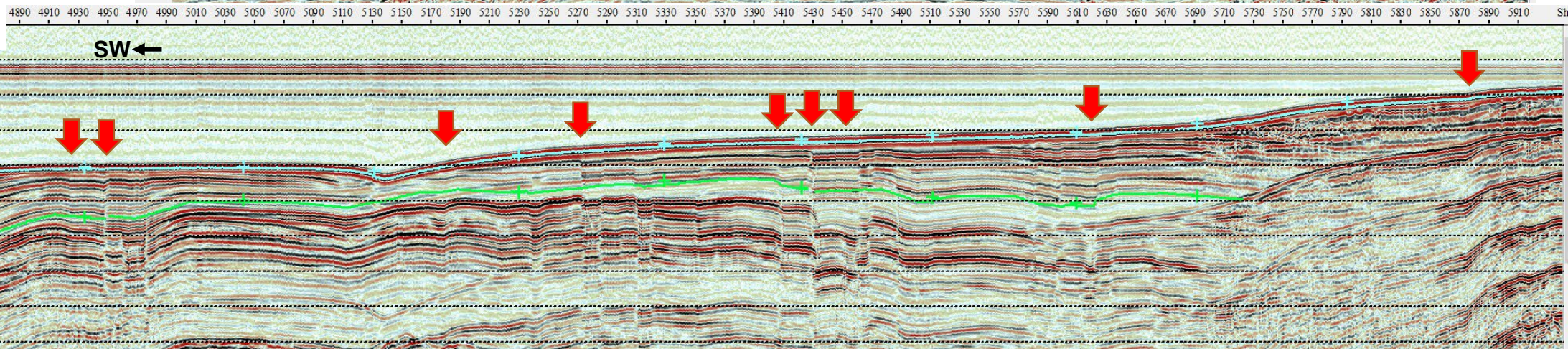


14-15A

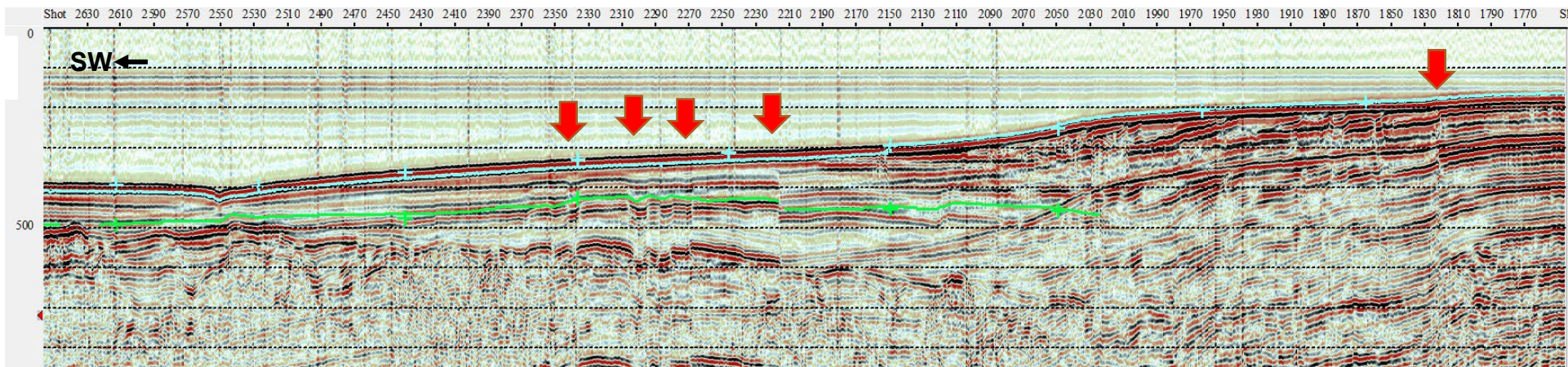
⑭ + ⑮



14-15B

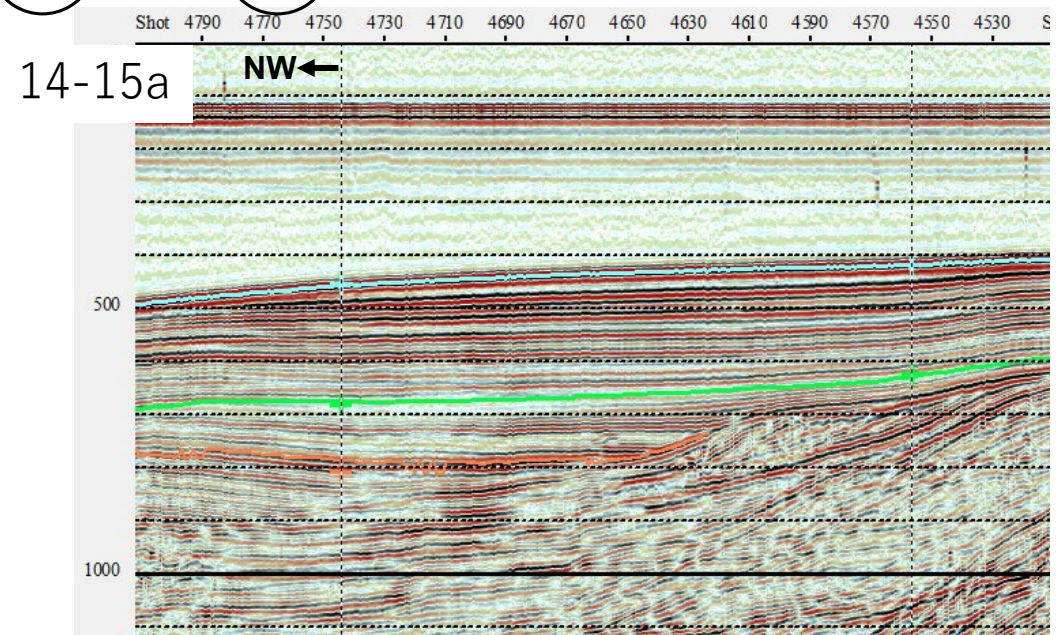


14-15C

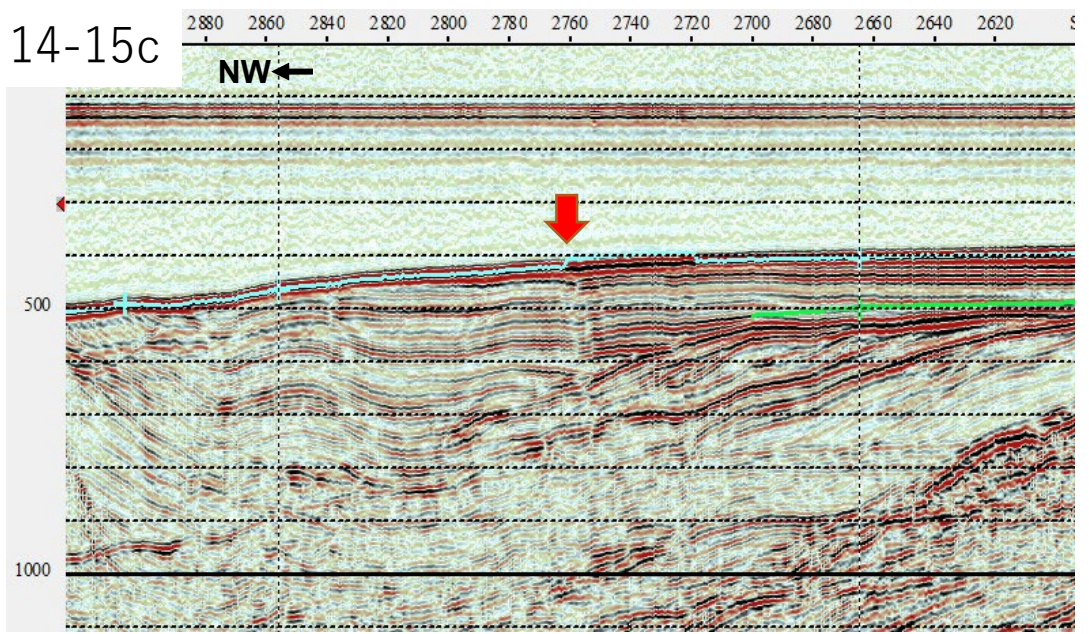
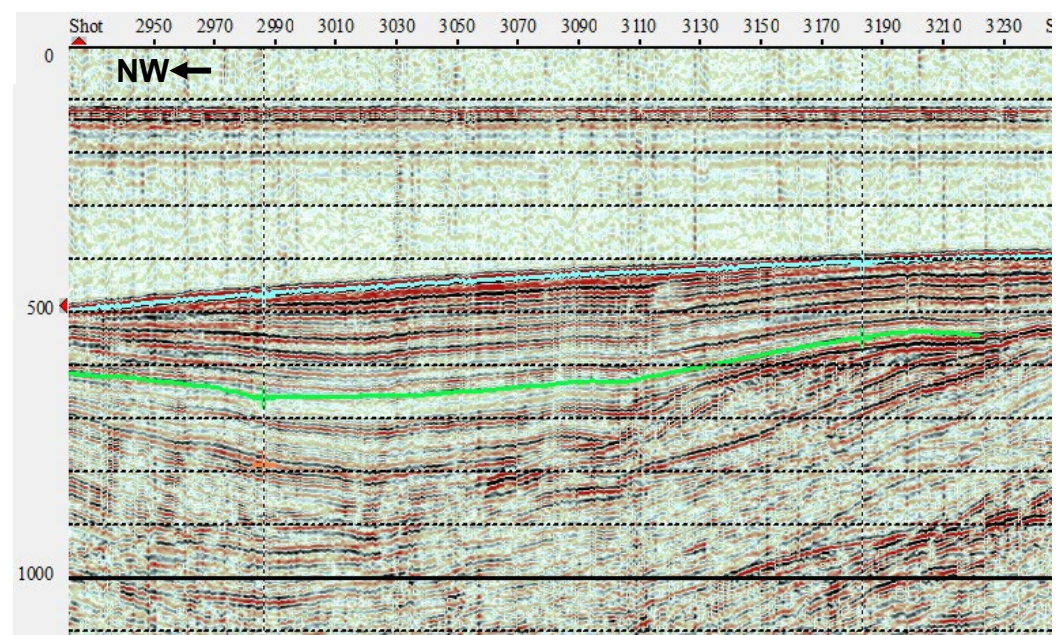


横軸：20 shotが  
約600m  
縦軸：ms

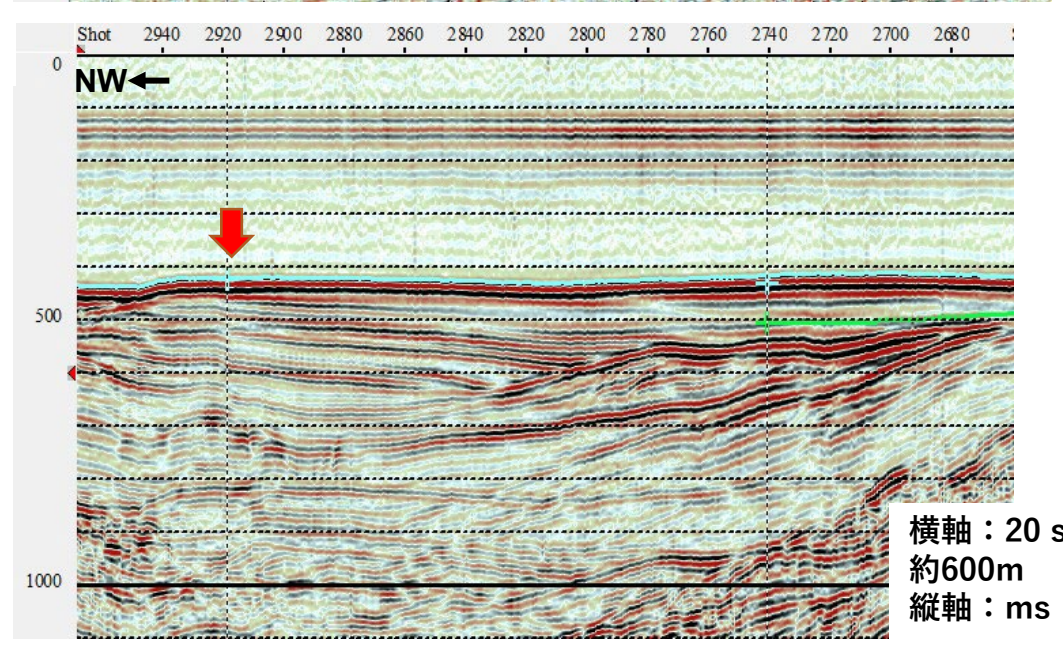
①4 + ①5



14-15b



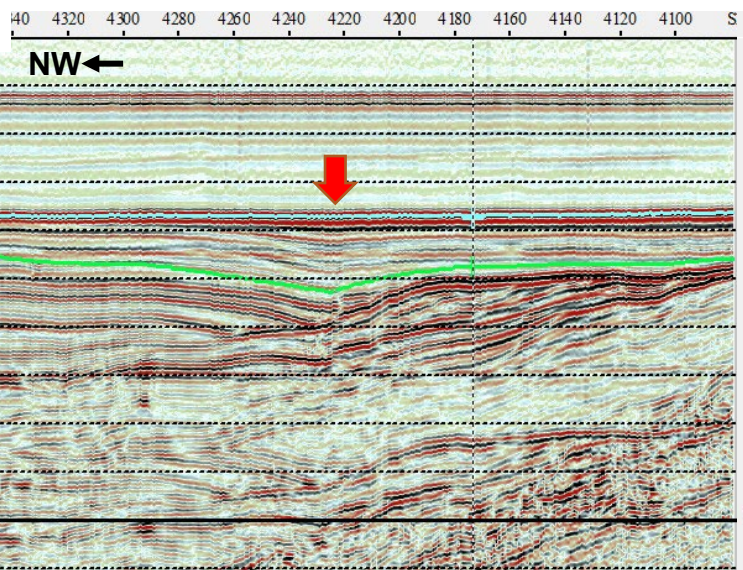
14-15d



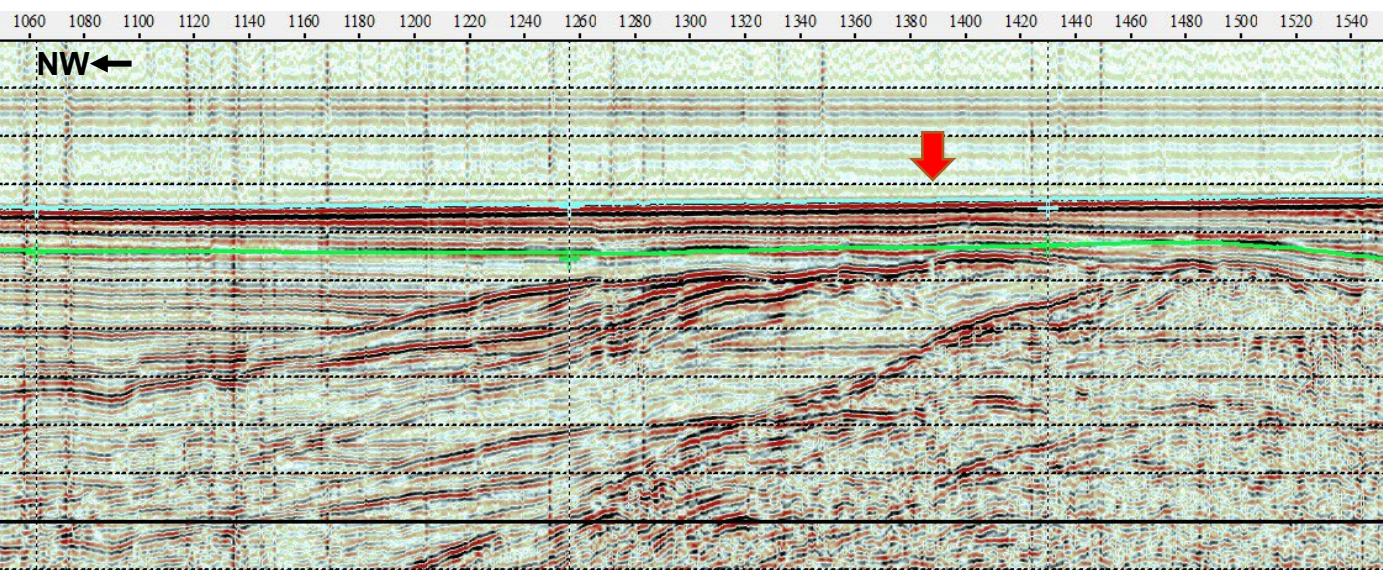
横軸：20 shotが  
約600m  
縦軸：ms

⑭ + ⑮

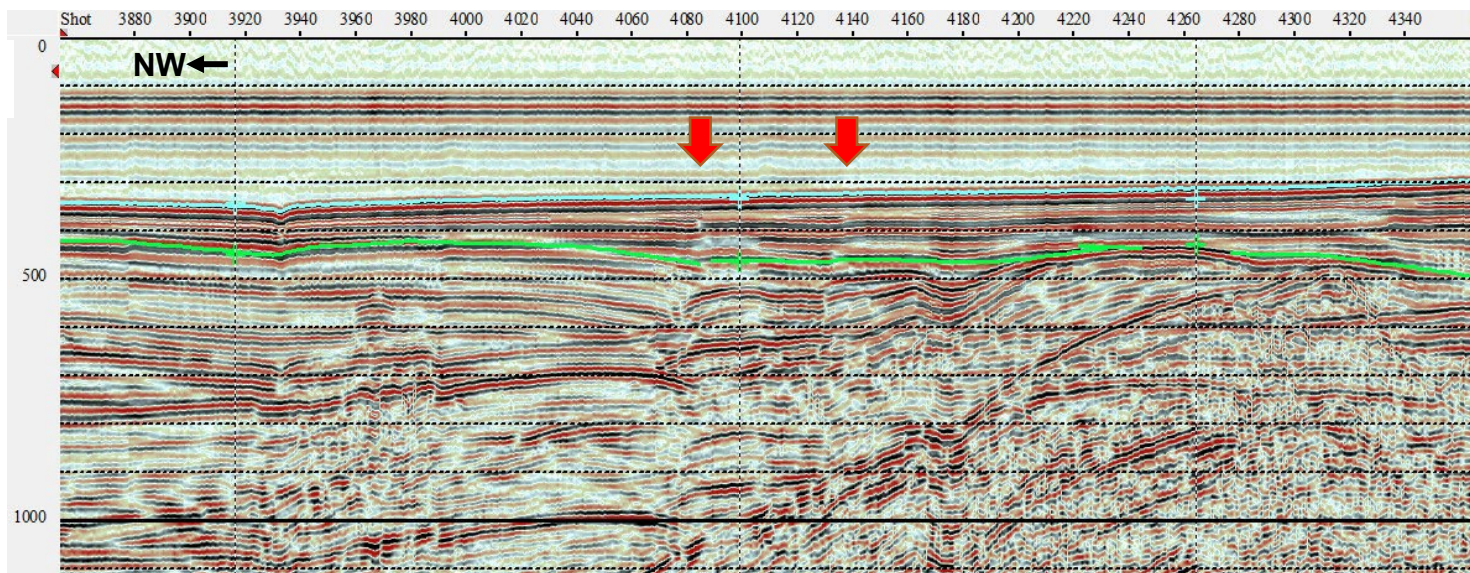
14-15e



14-15f



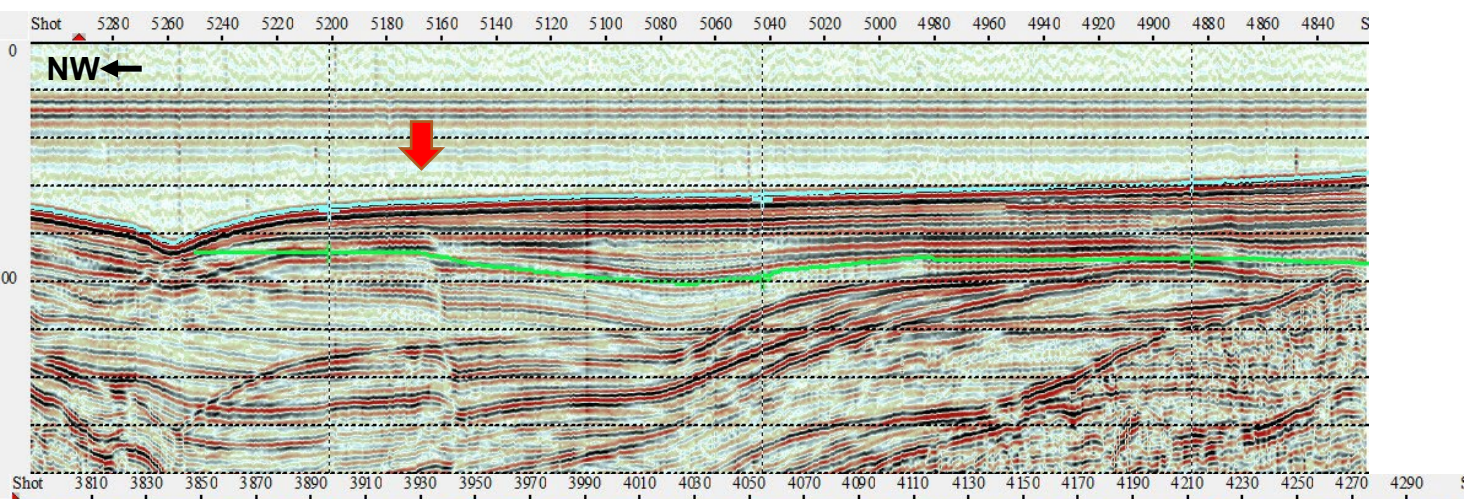
14-15g



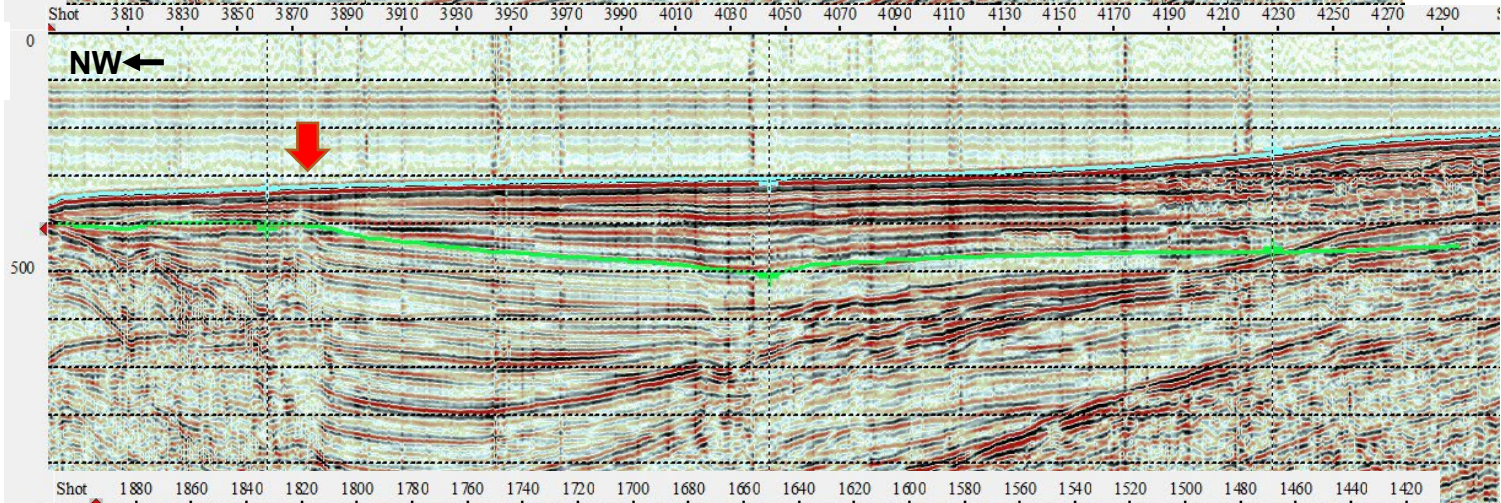
横軸：20 shotが  
約600m  
縦軸：ms

①④ + ①⑤

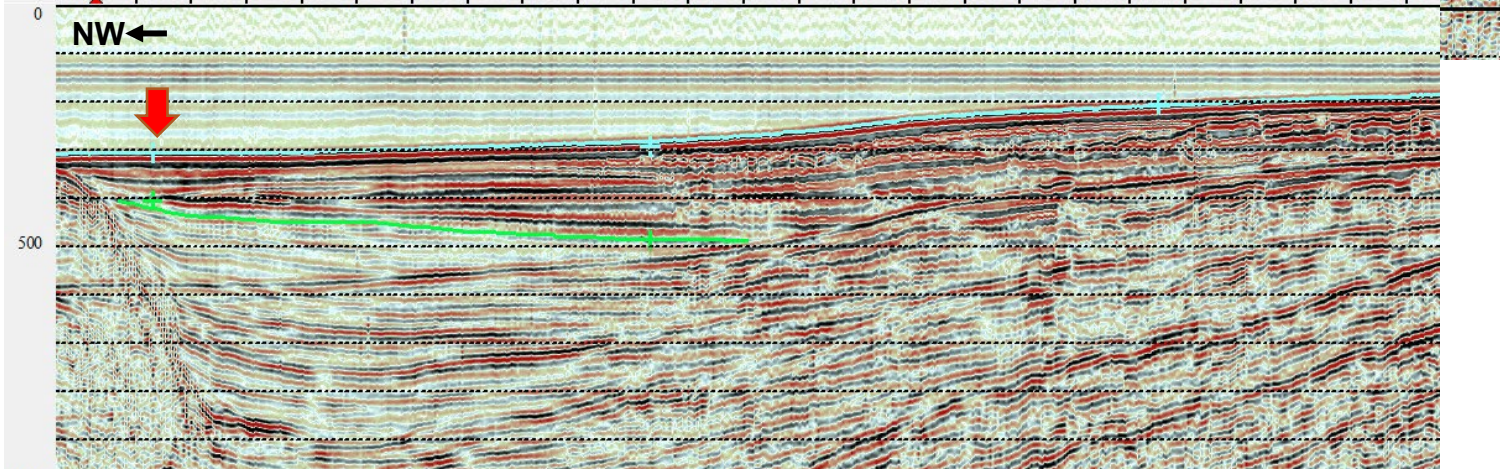
14-15h



14-15i



14-15j



横軸：20 shotが  
約600m  
縦軸：ms

## 文献

- ・ 杉山雄一・山本博文・村上文敏・宇佐見琢哉・畑山一人・島崎裕行（2013）：柳ヶ瀬・関ヶ原断層帯主部北方延長域（坂井市沖～福井市沖）における活断層の分布と活動性. 活断層・古地震研究報告, 13, 145-185.