

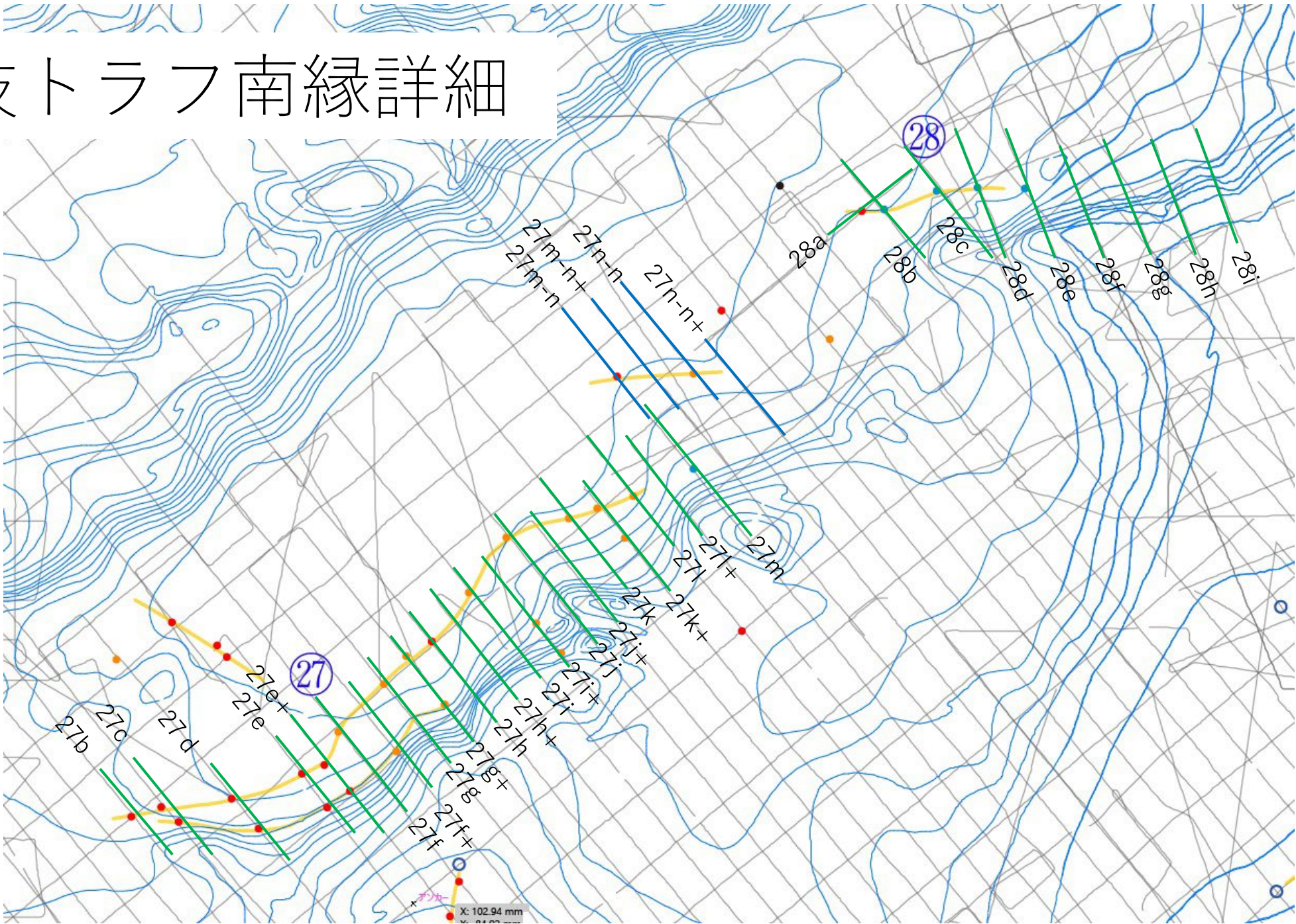
日本海南部の海域活断層の変位量に関する資料 (これまでに審議した反射断面より抜粋)

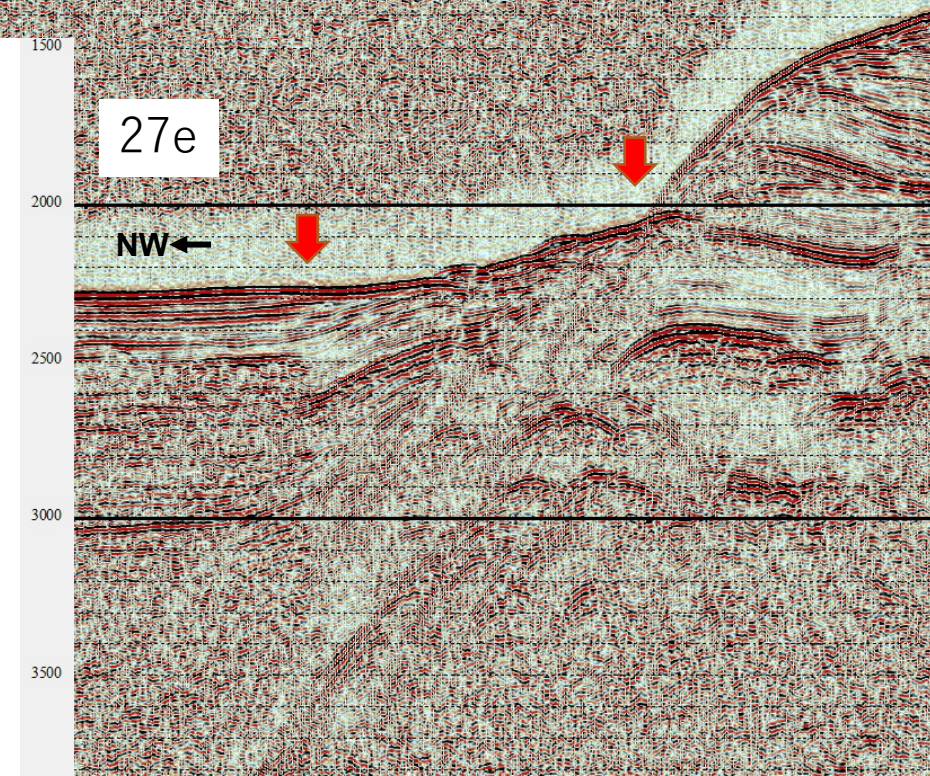
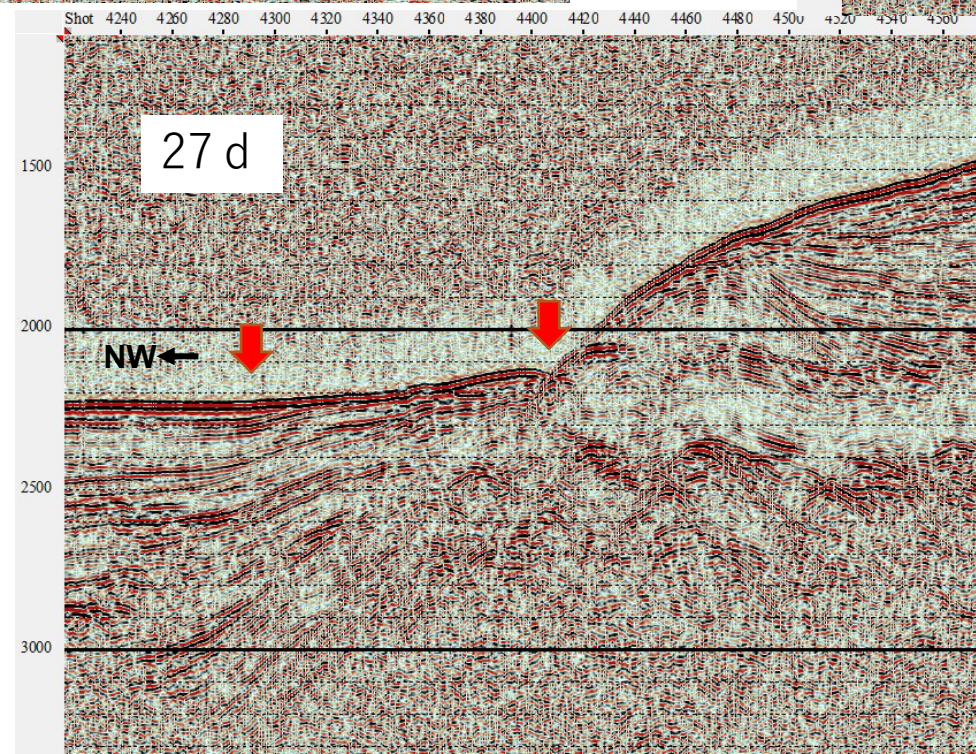
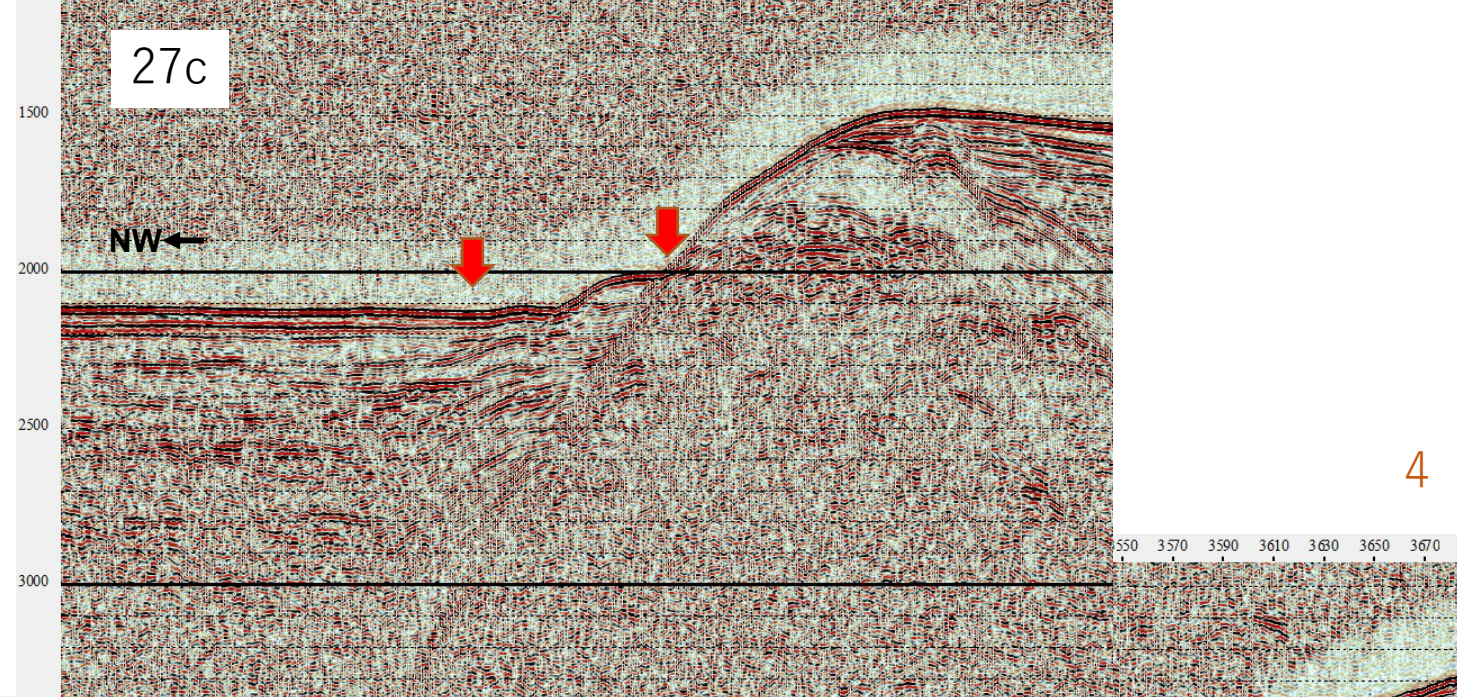
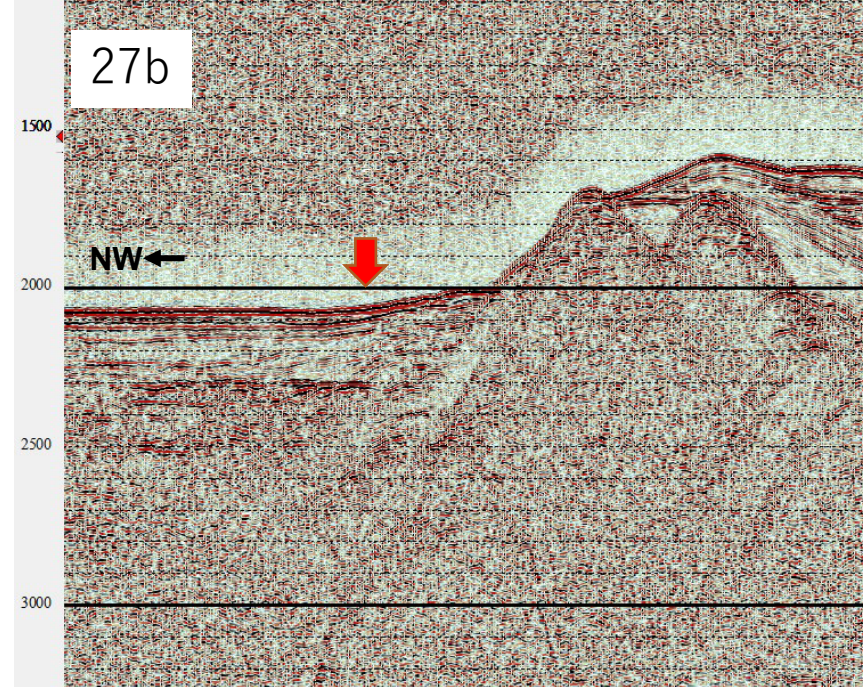
近畿－北陸沖海域活断層案及び反射断面 (隠岐トラフ南縁)

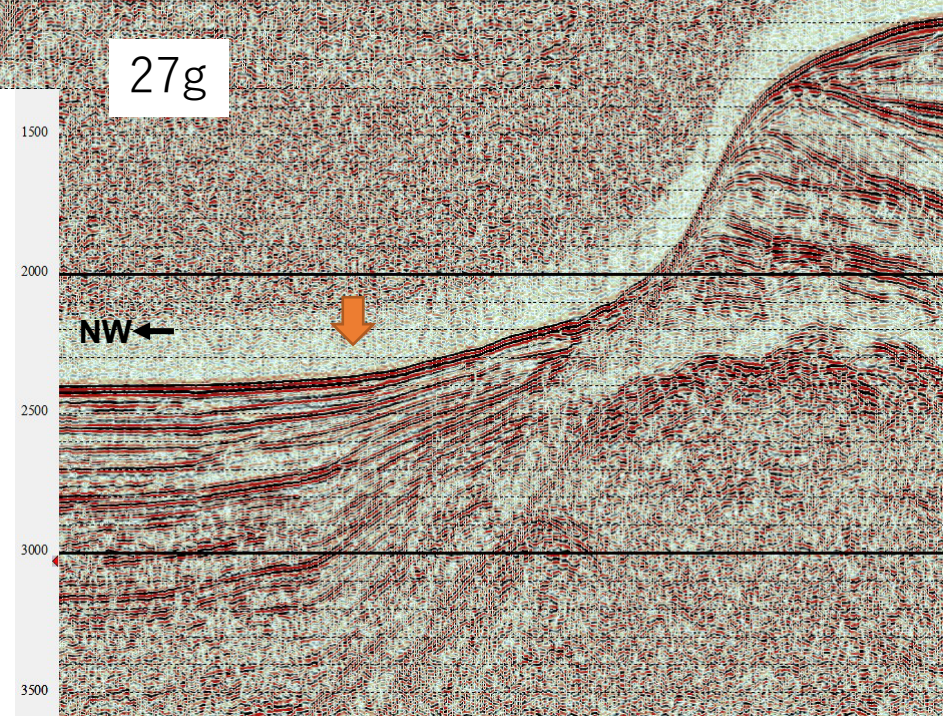
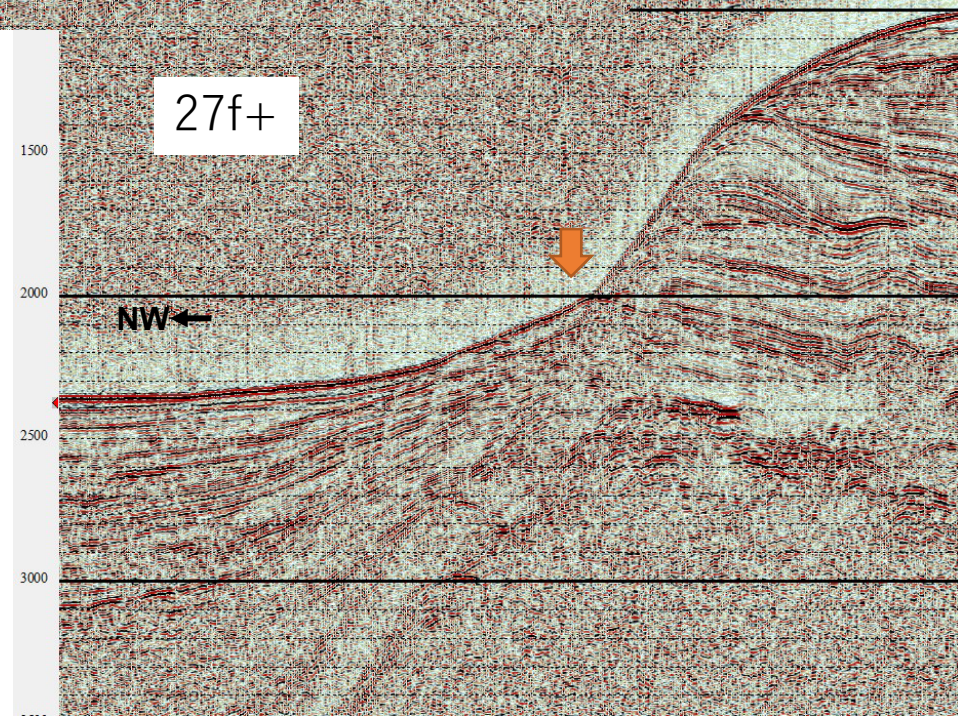
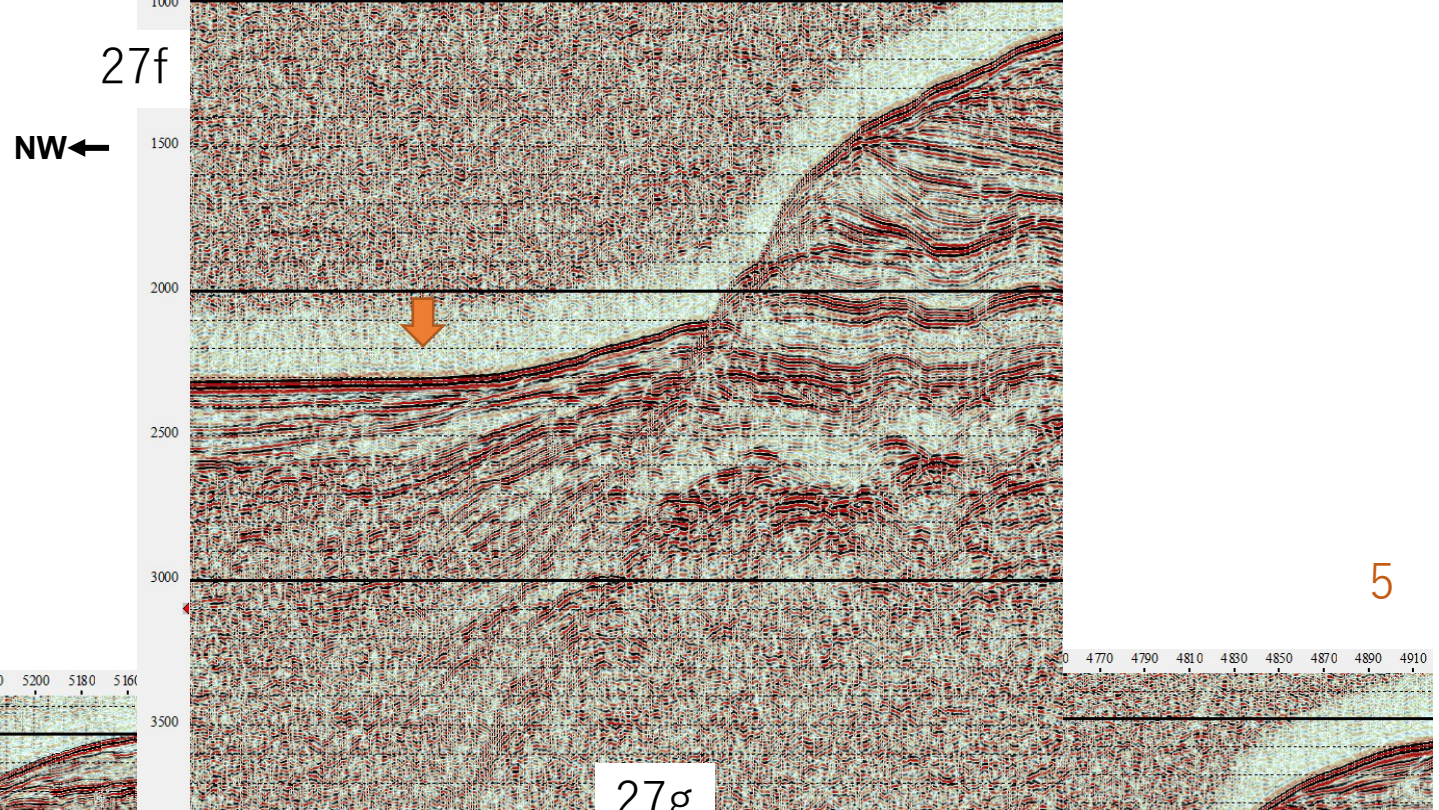
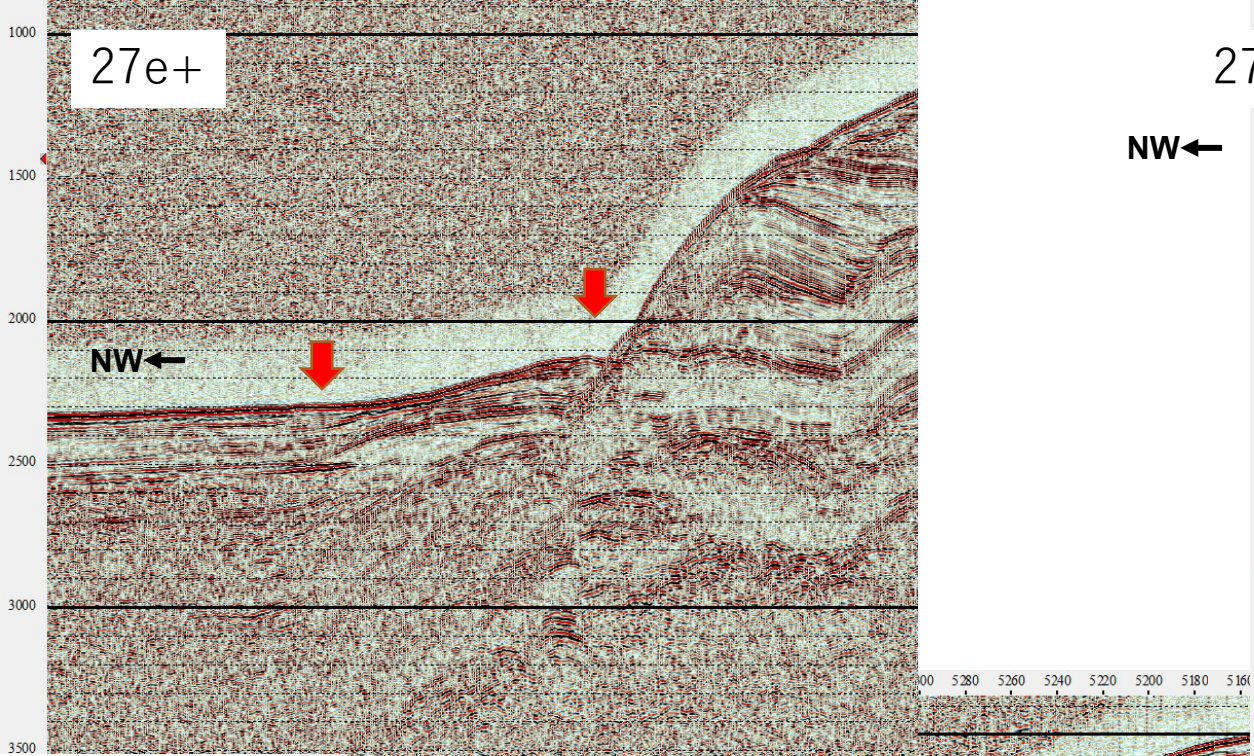
2024/3/4

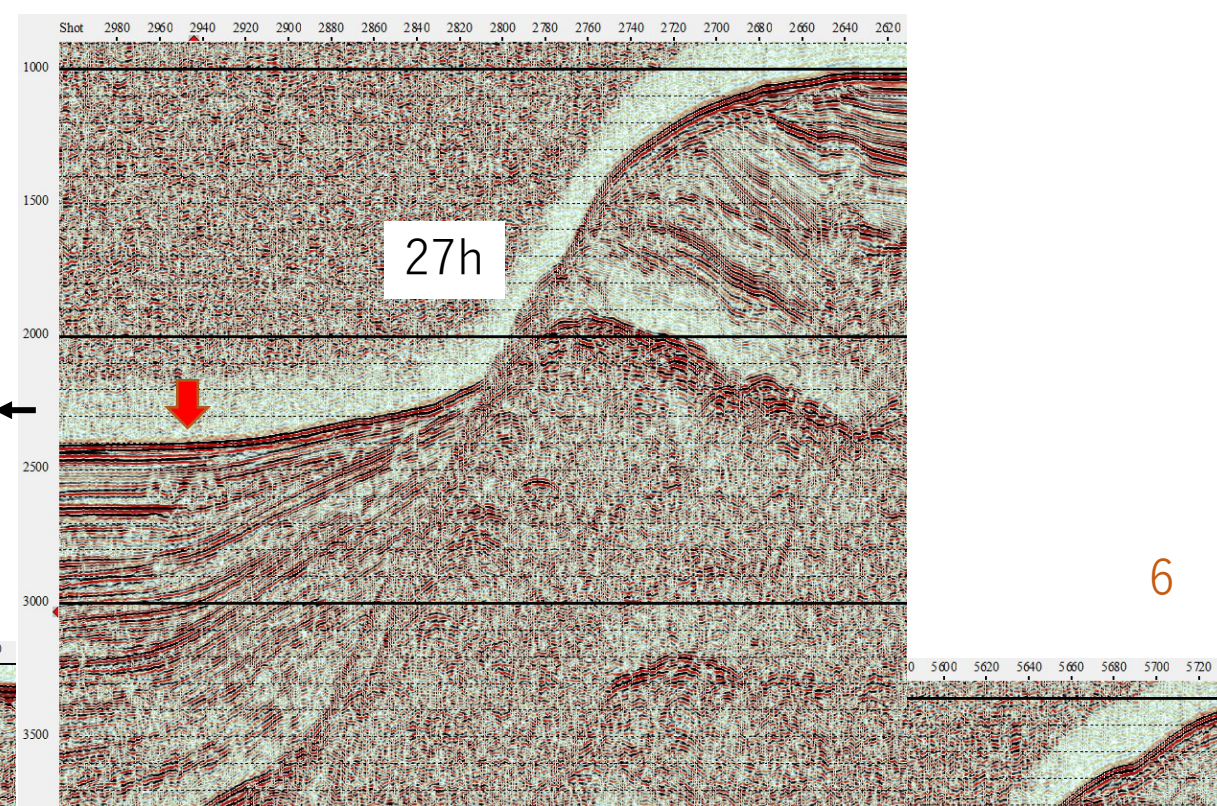
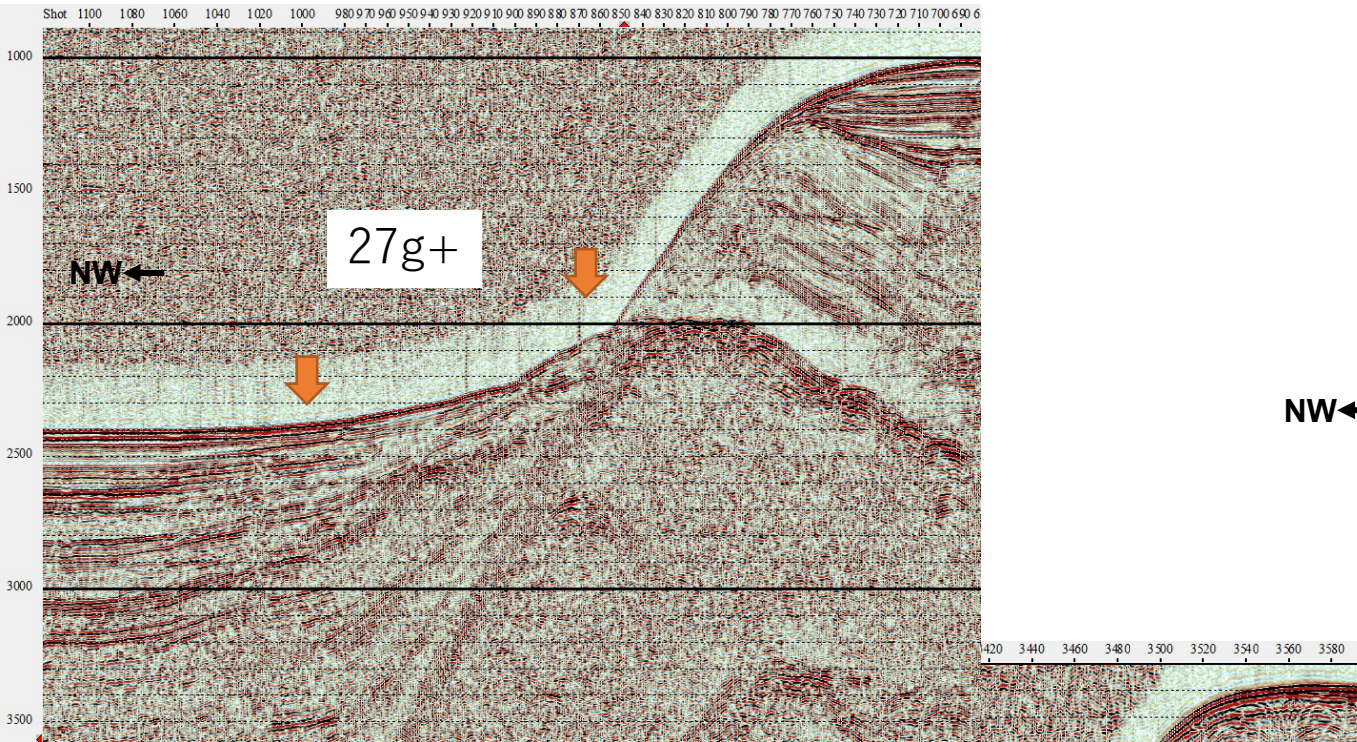
産業技術総合研究所
活断層・火山研究部門
岡村行信

隠岐トラフ南縁詳細

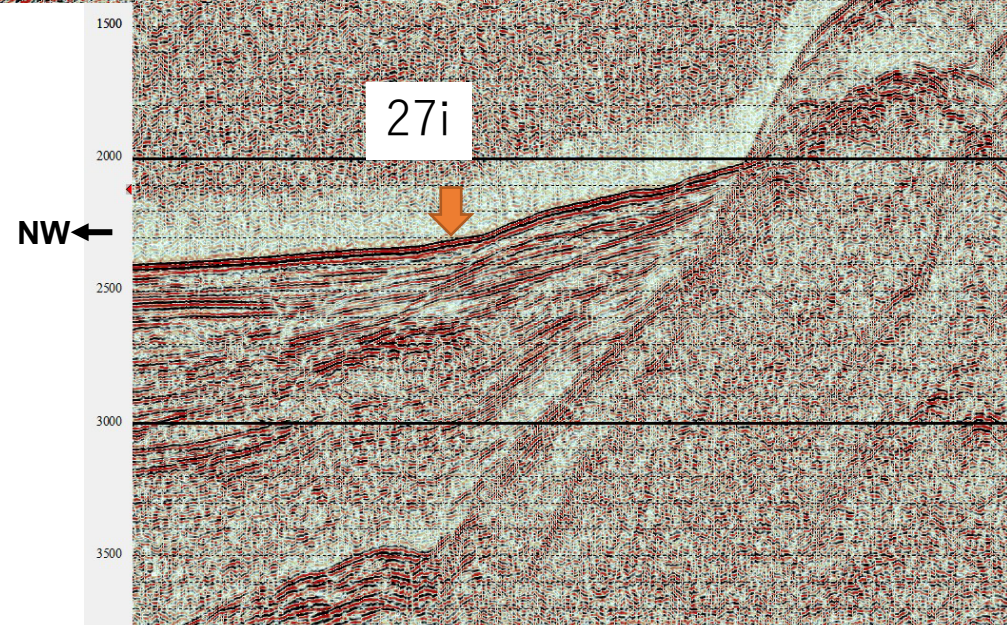
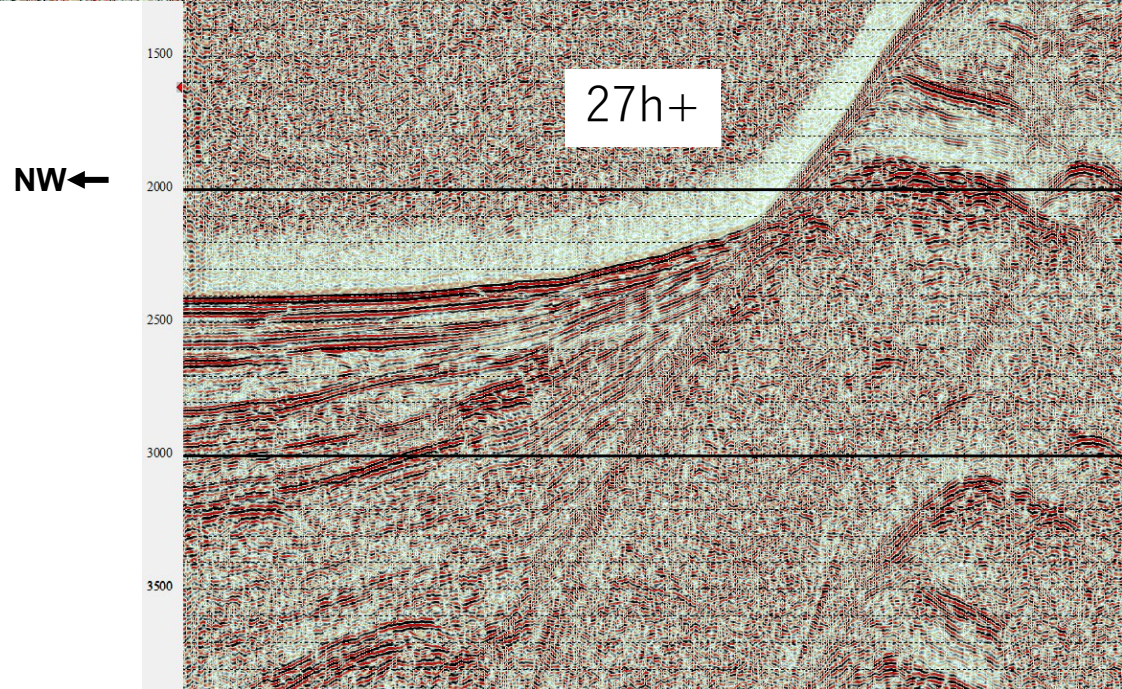








6

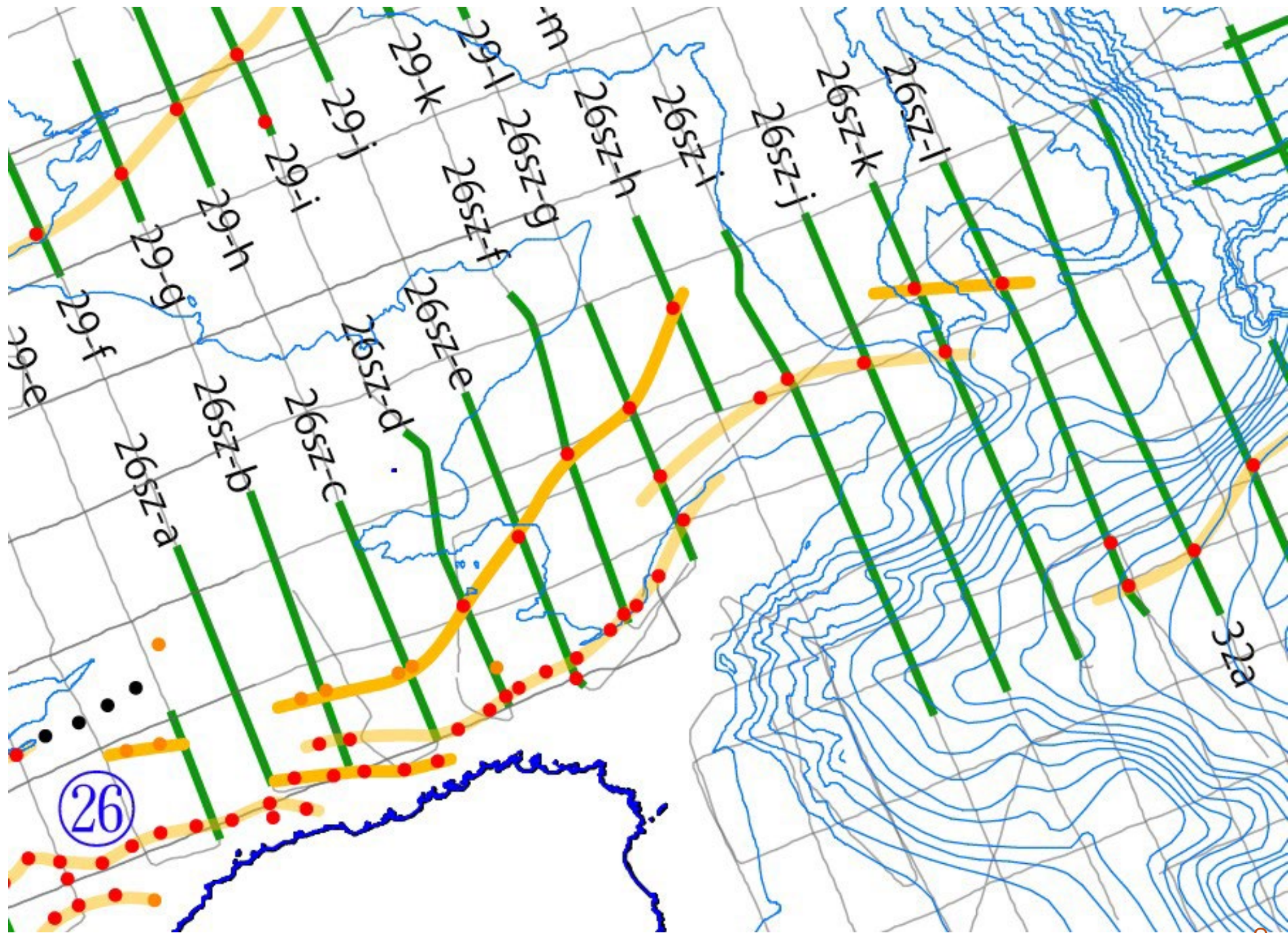
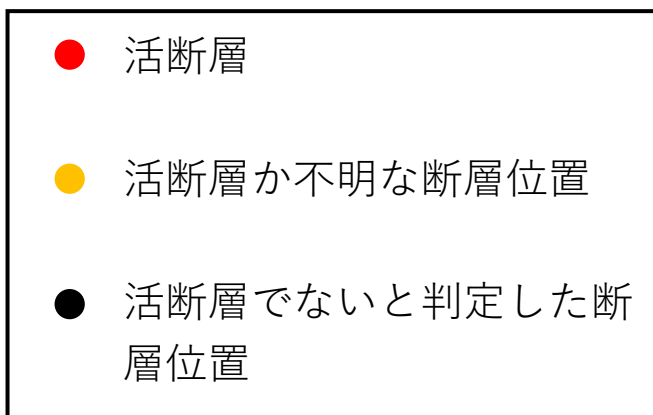


近畿－北陸沖海域活断層案及び反射断面 (珠洲沖－舩倉島)

2024/2/2

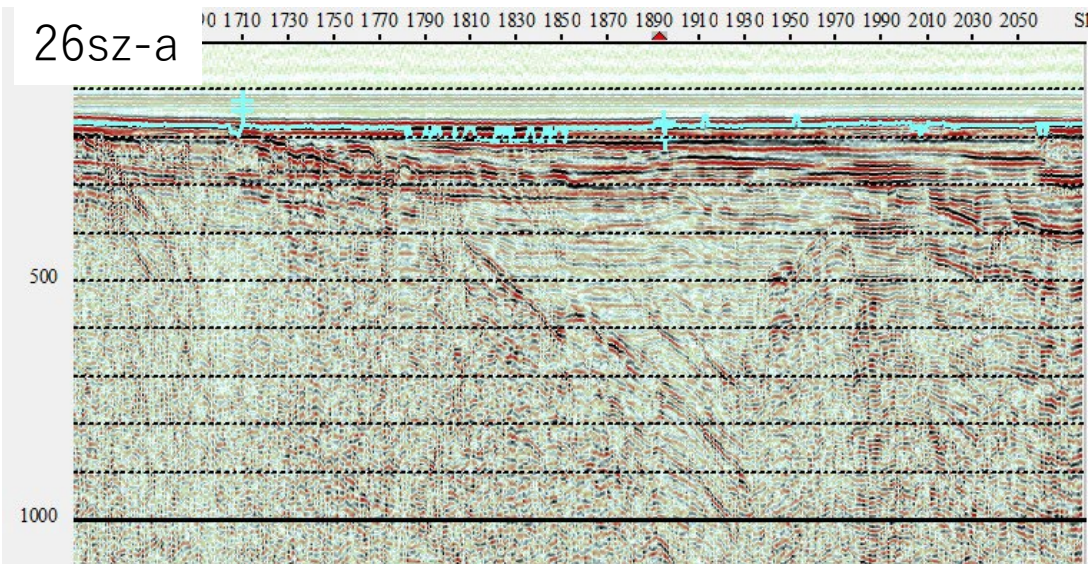
産業技術総合研究所
活断層・火山研究部門
岡村行信

珠洲沖

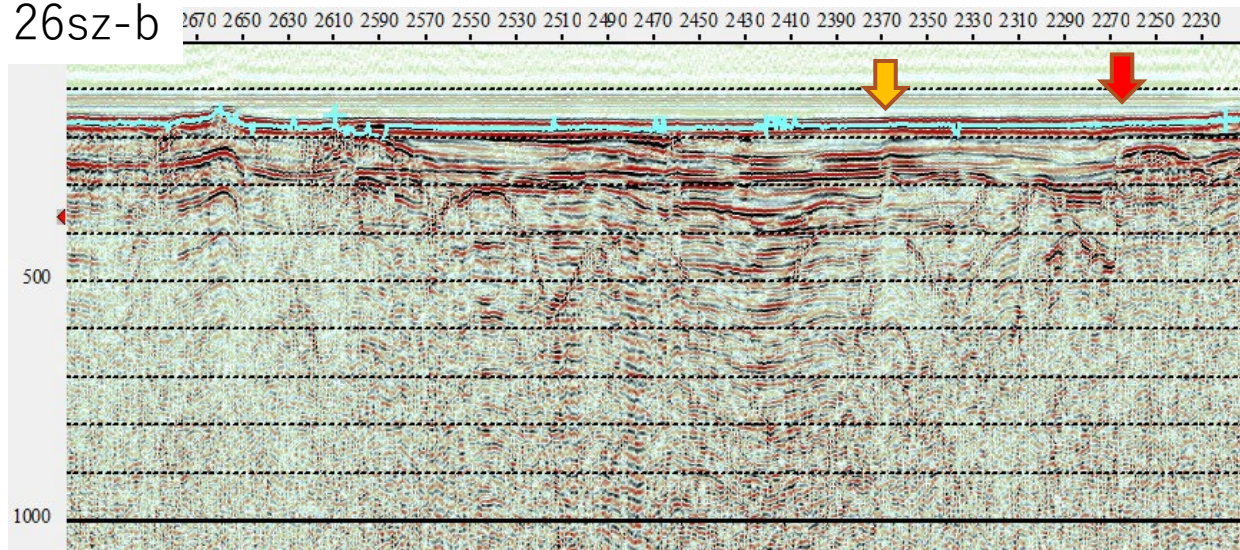


NW←

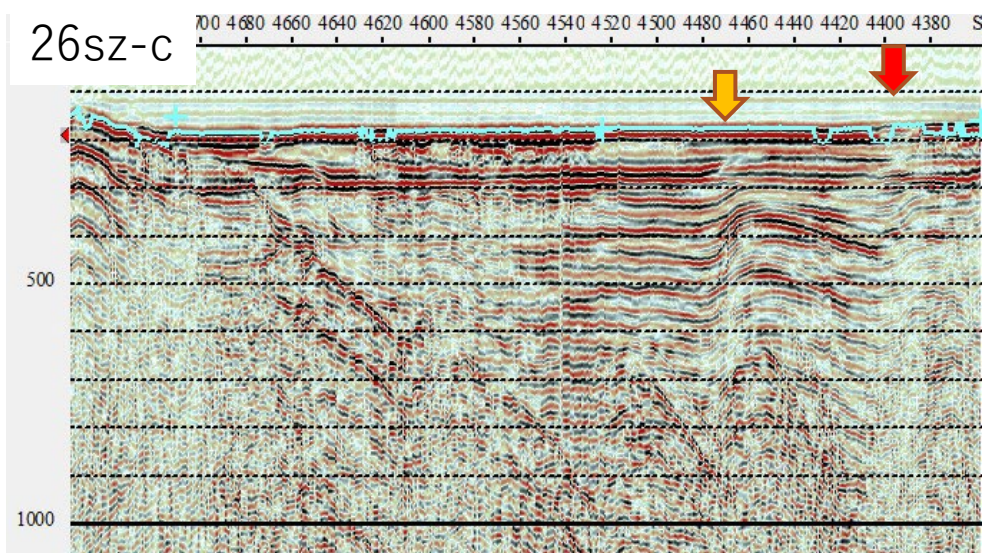
26sz-a



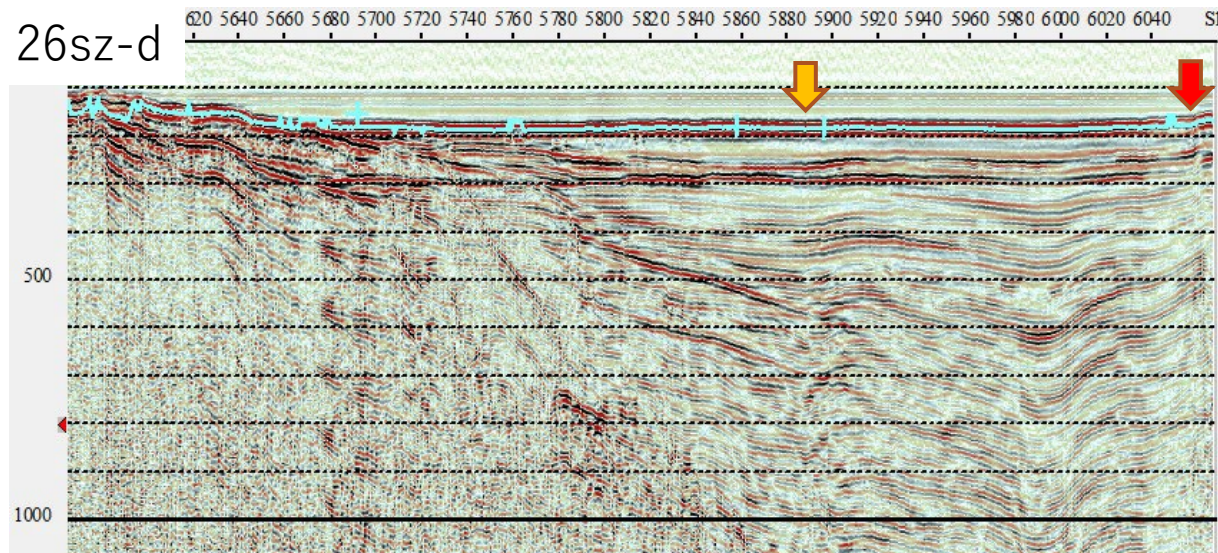
26sz-b



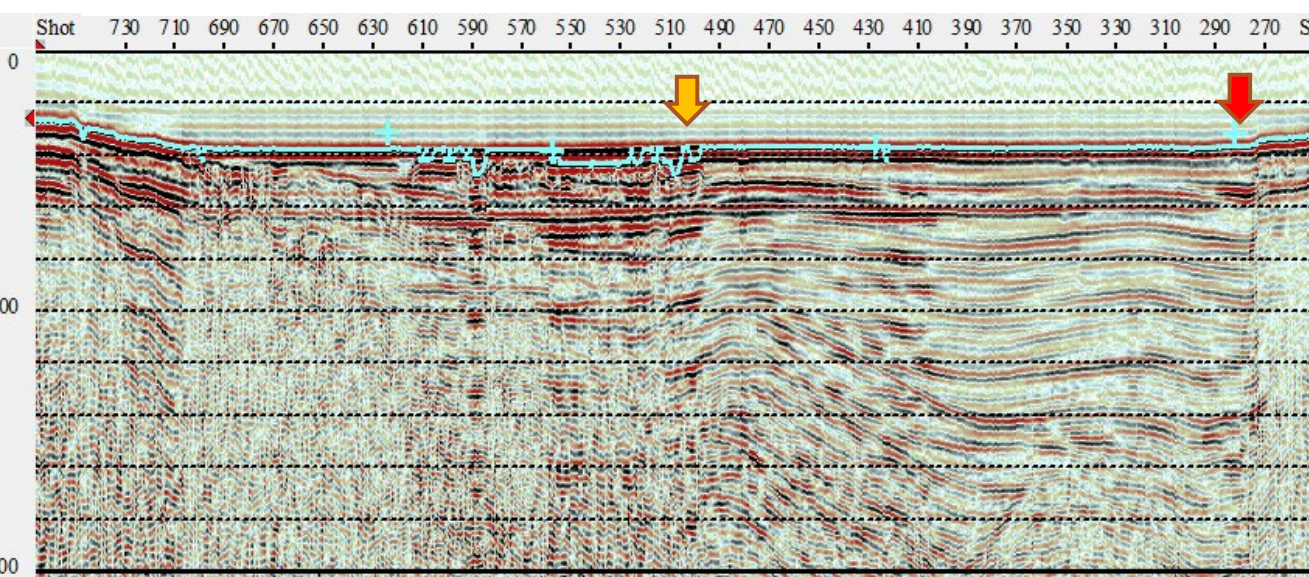
26sz-c



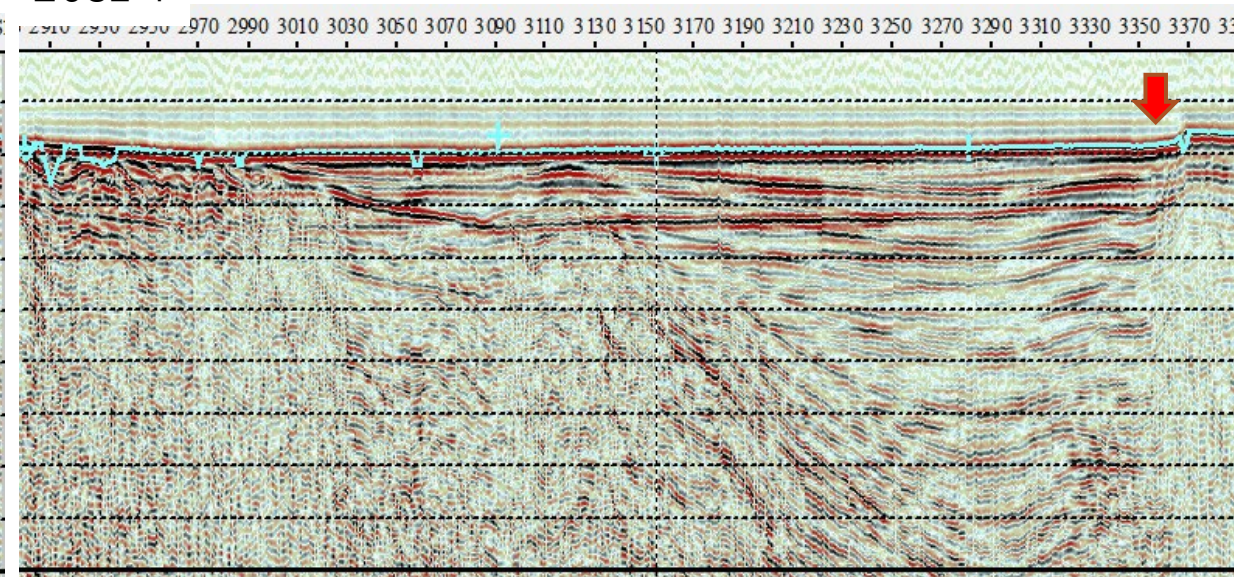
26sz-d



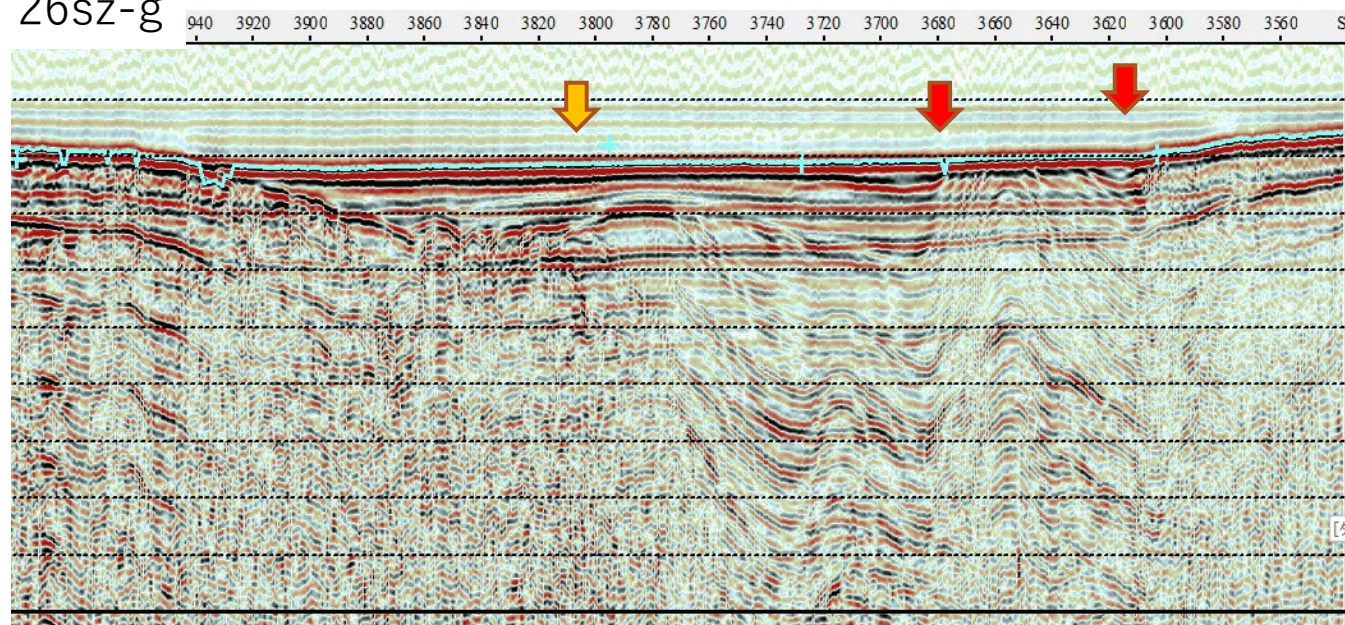
26sz-e NW←



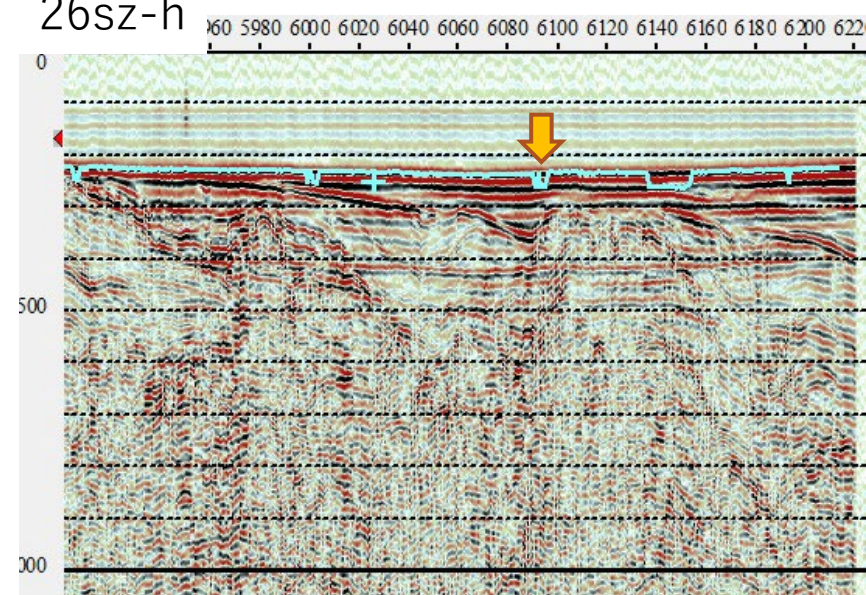
26sz-f



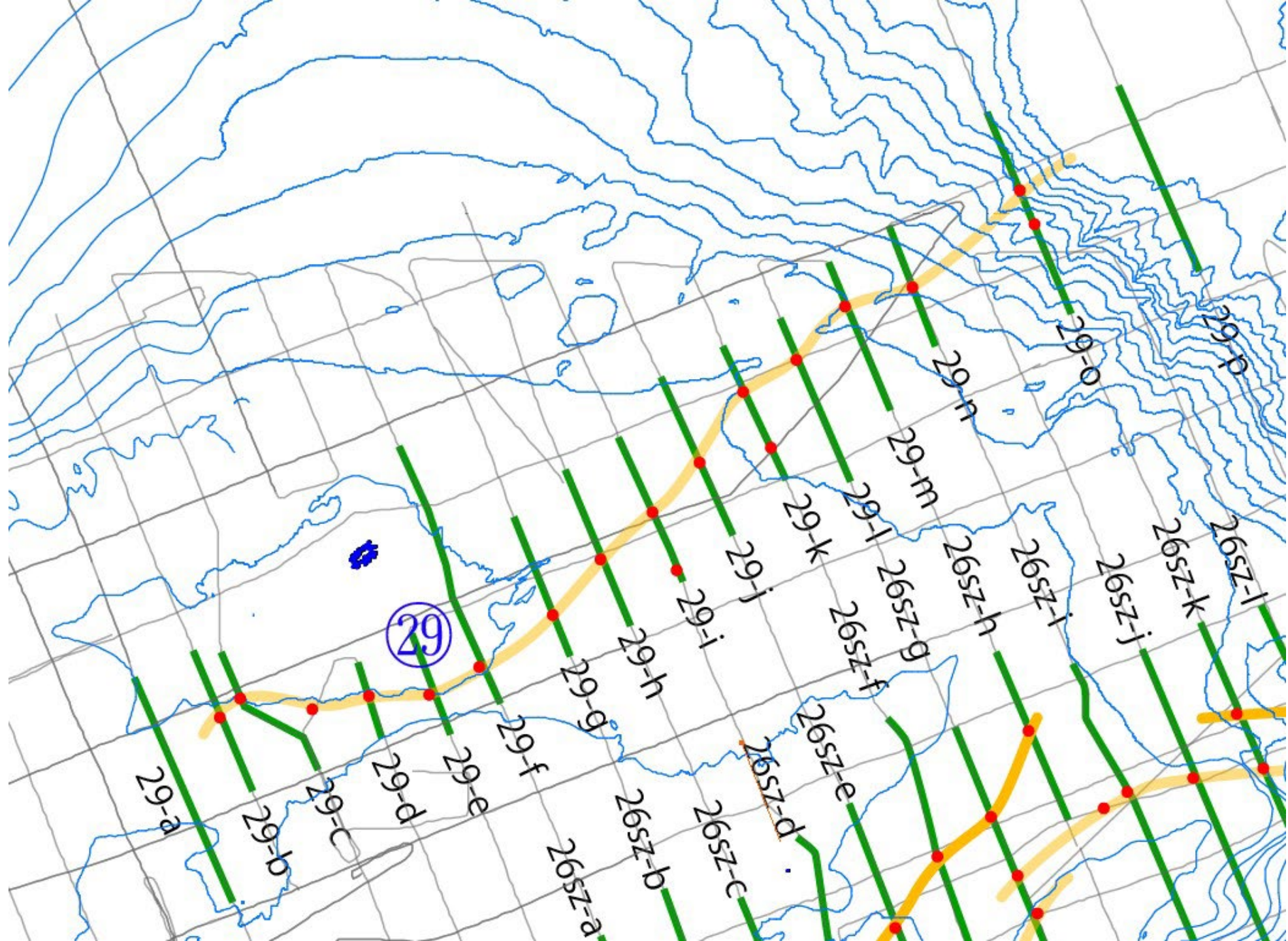
26sz-g



26sz-h

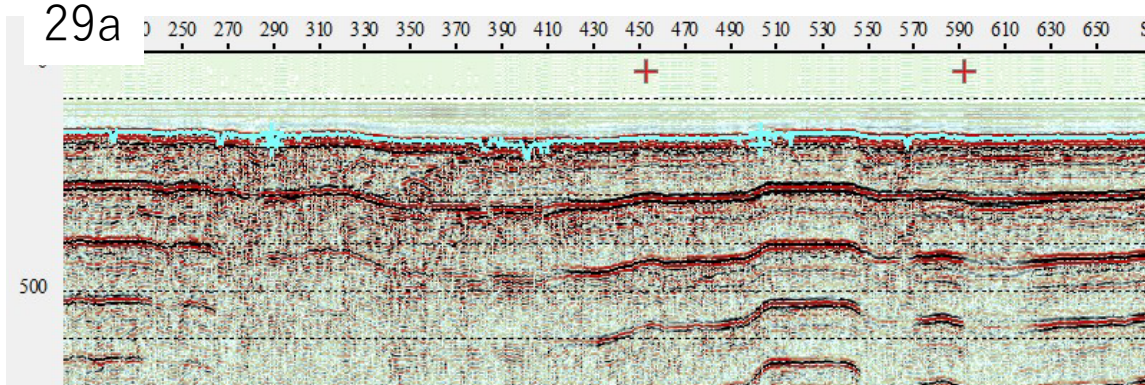


舢倉島

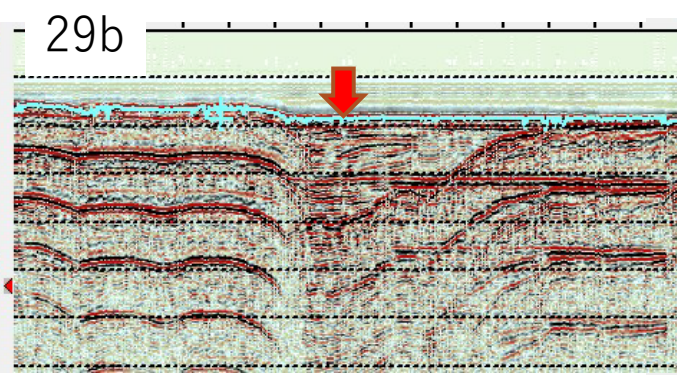


NW←

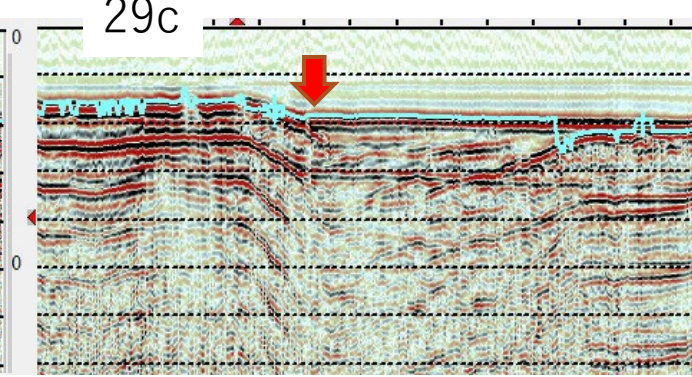
29a



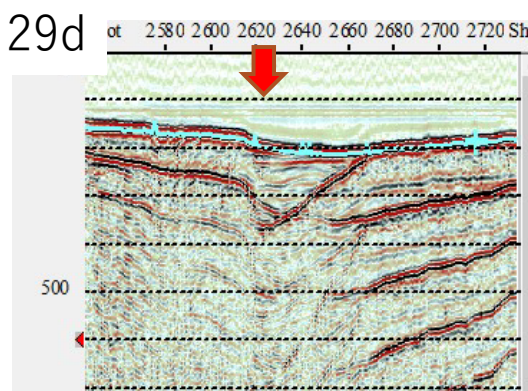
29b



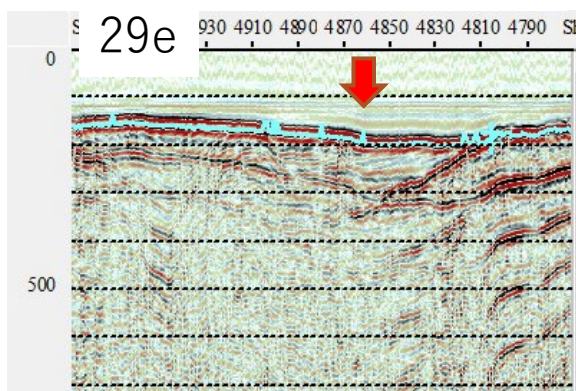
29c



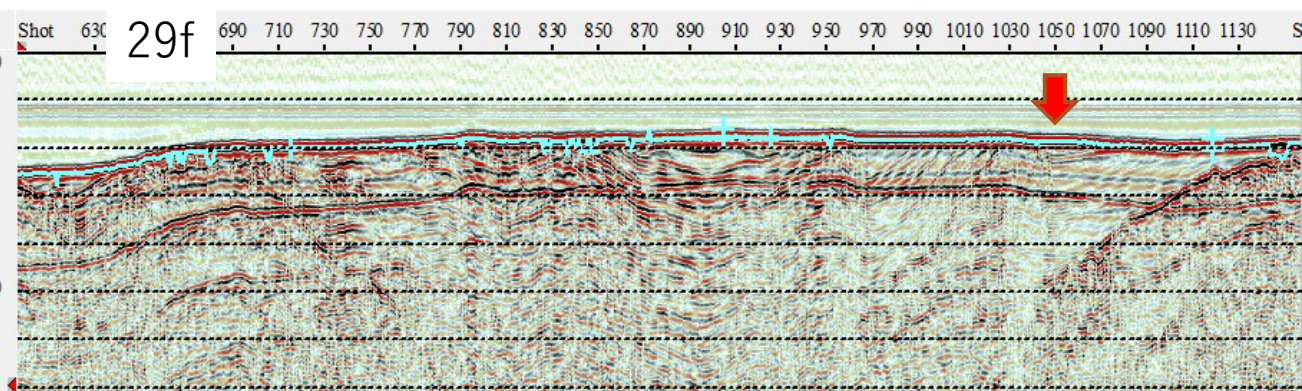
29d



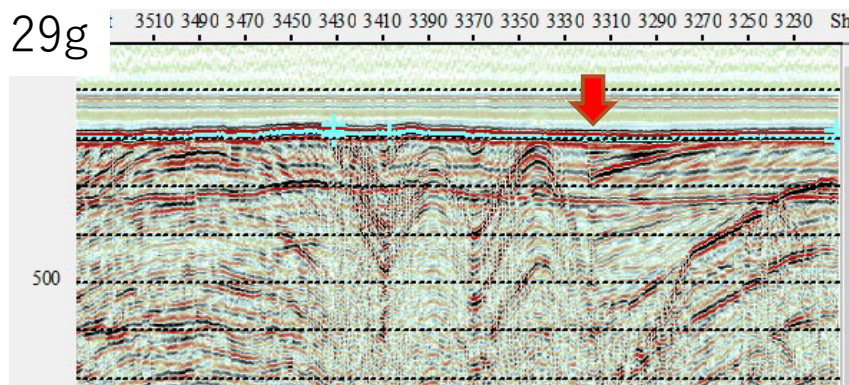
29e



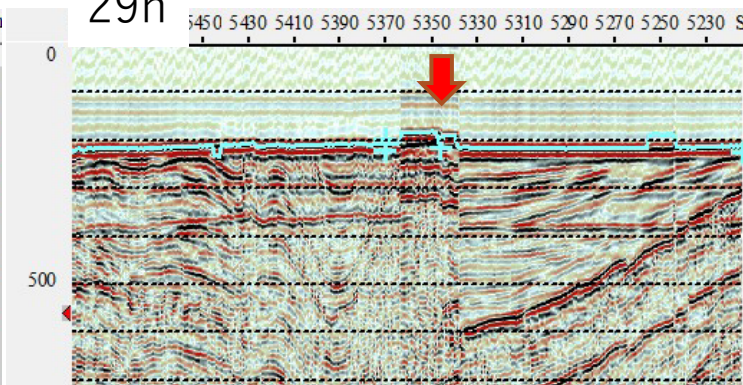
29f



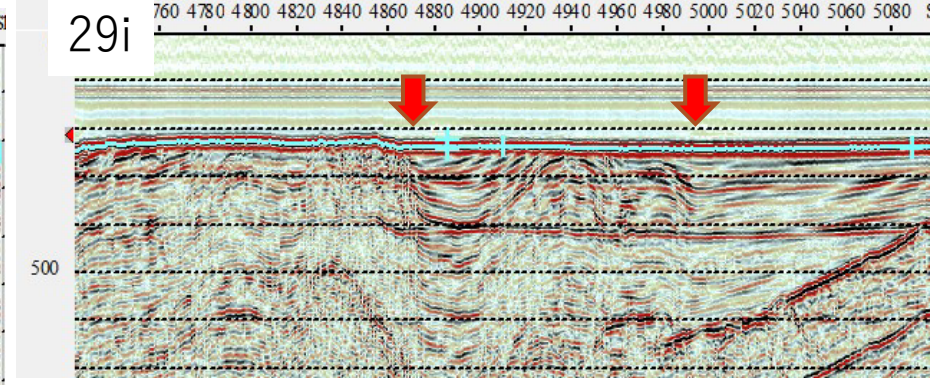
29g

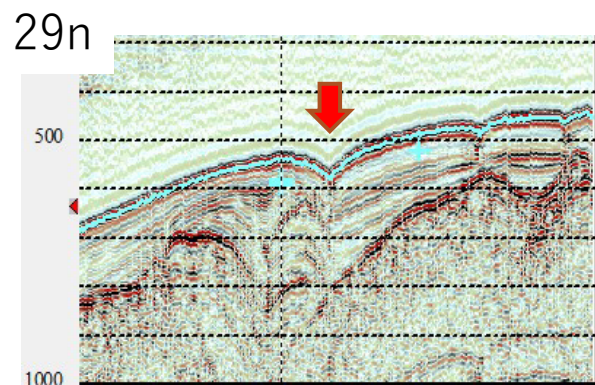
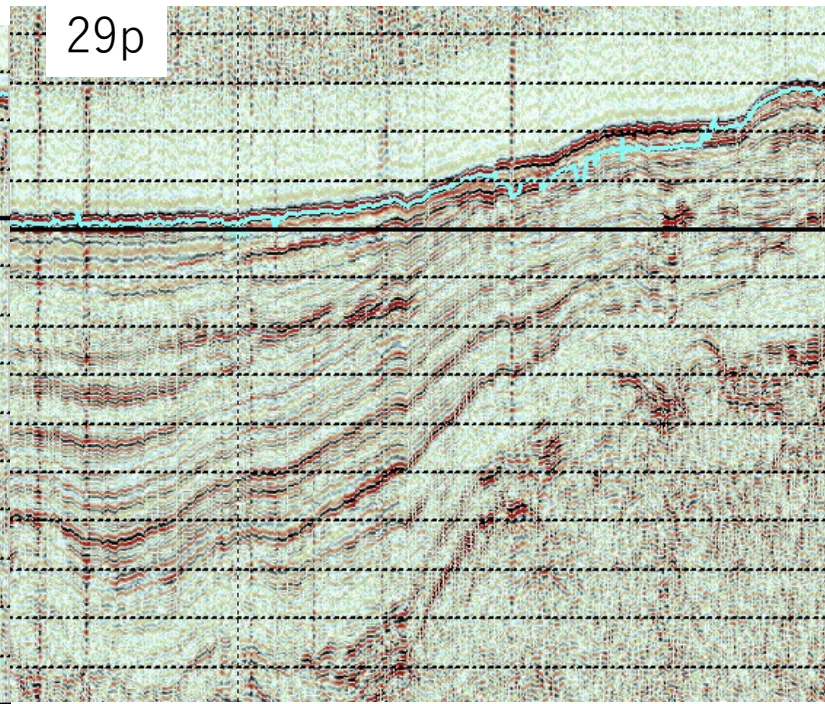
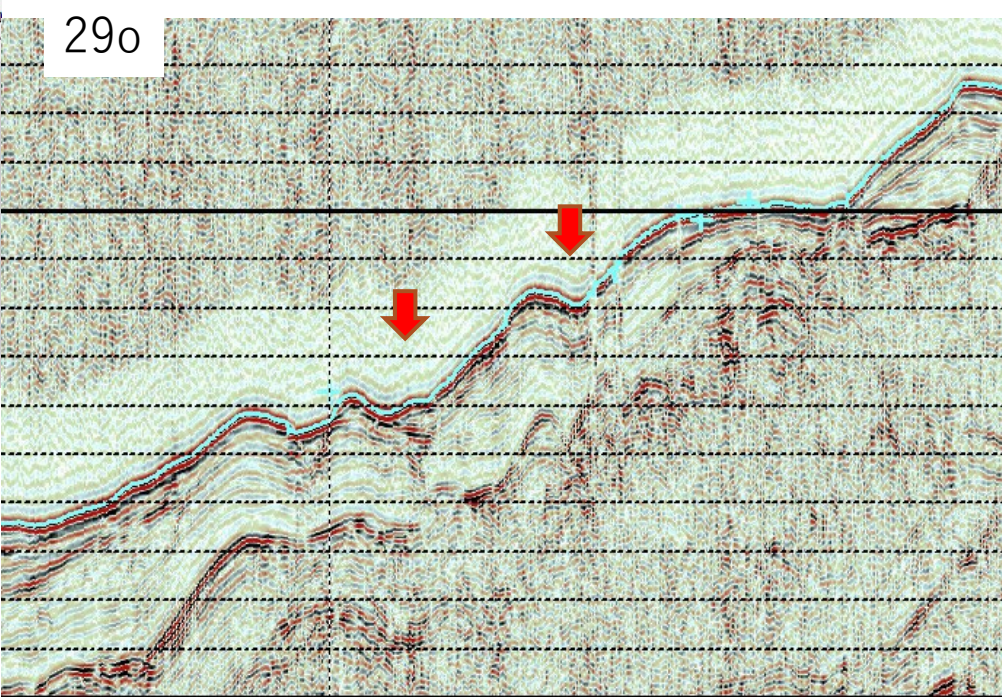
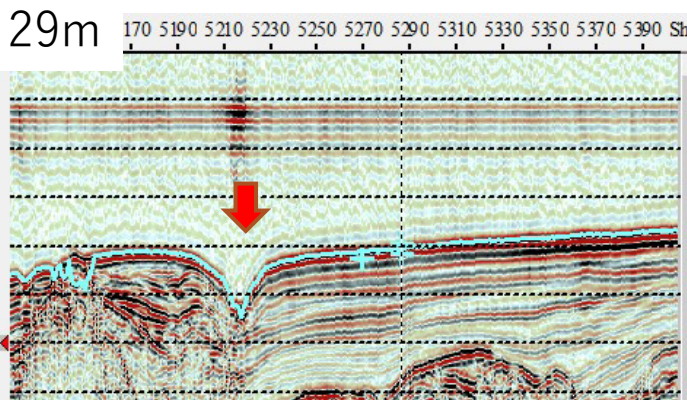
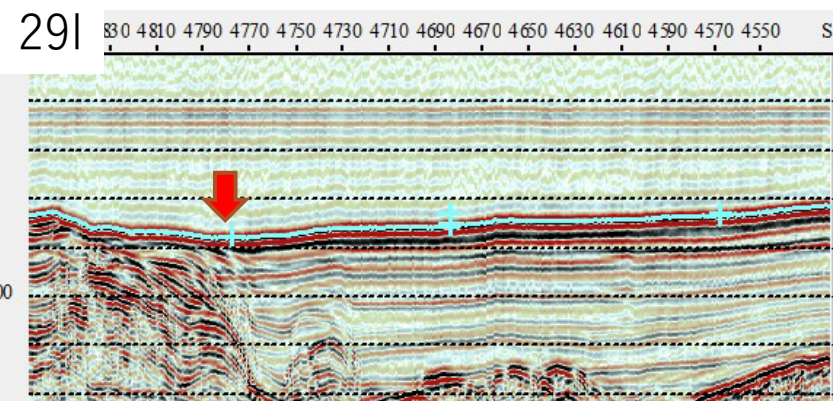
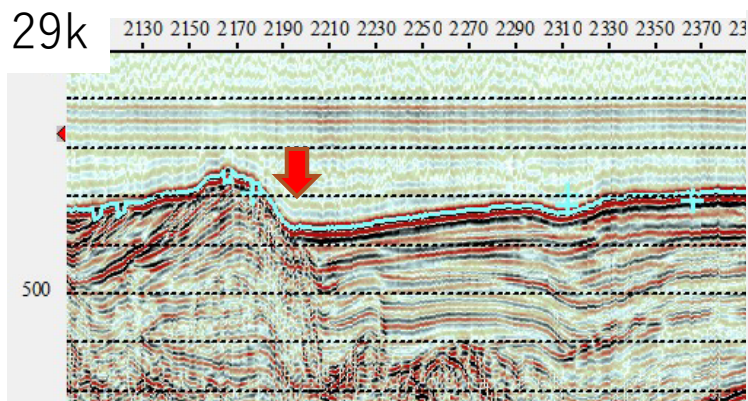
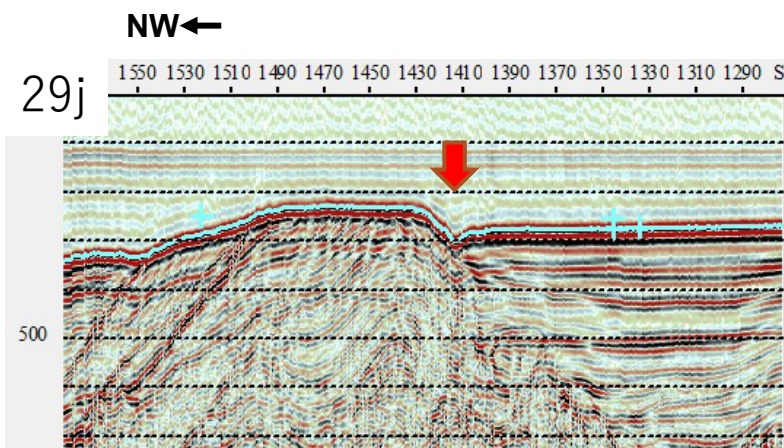


29h



29i

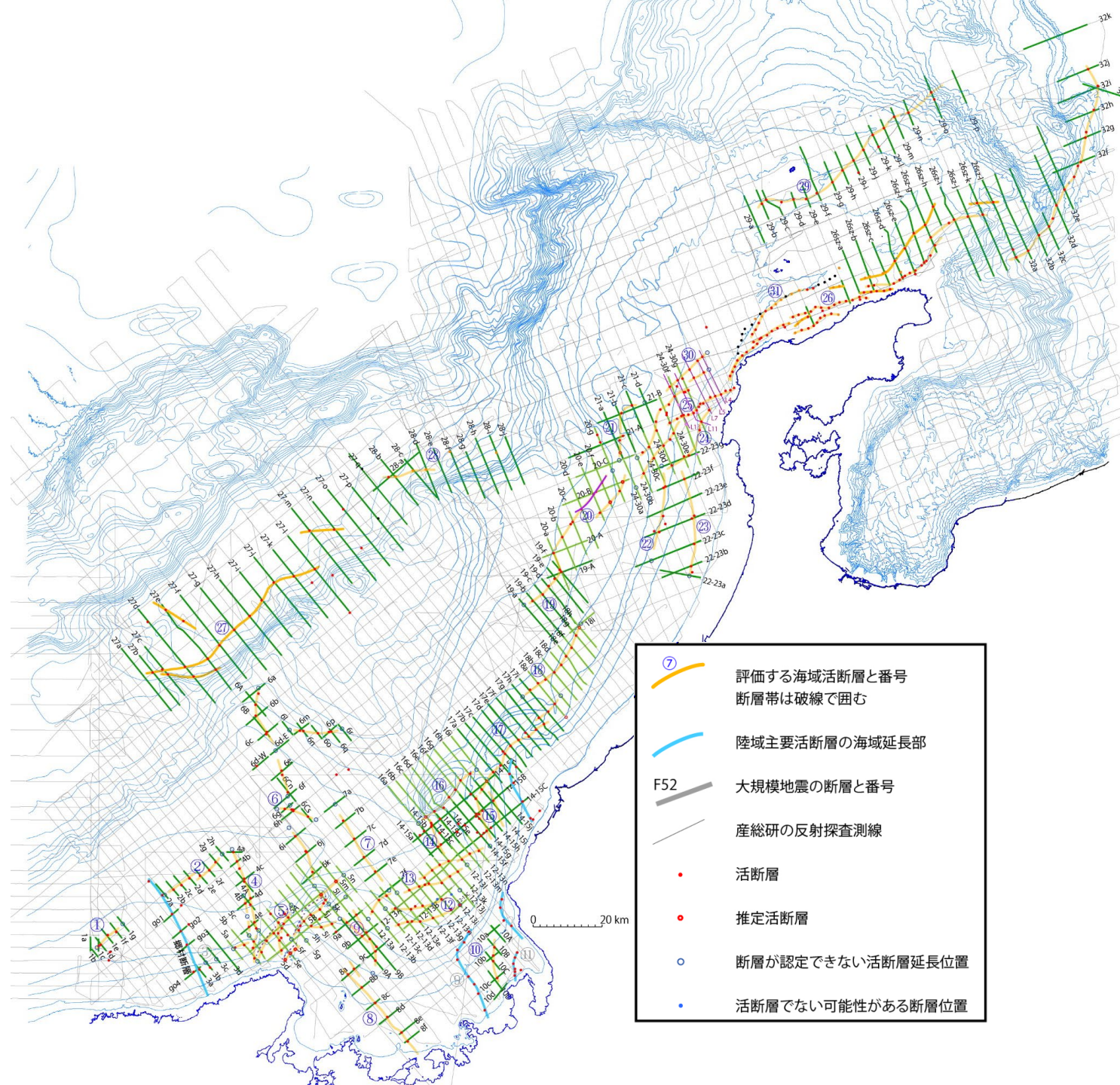


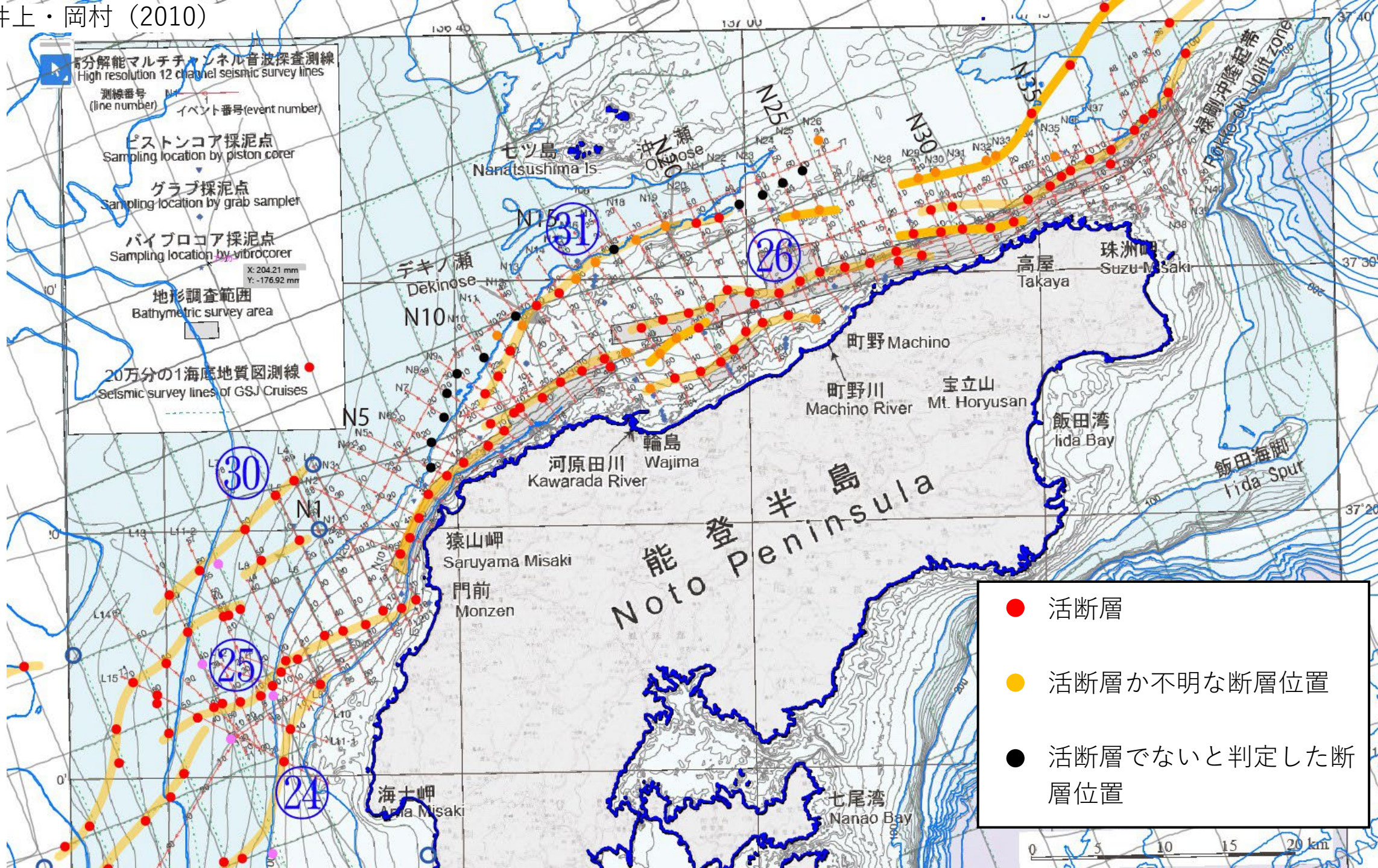


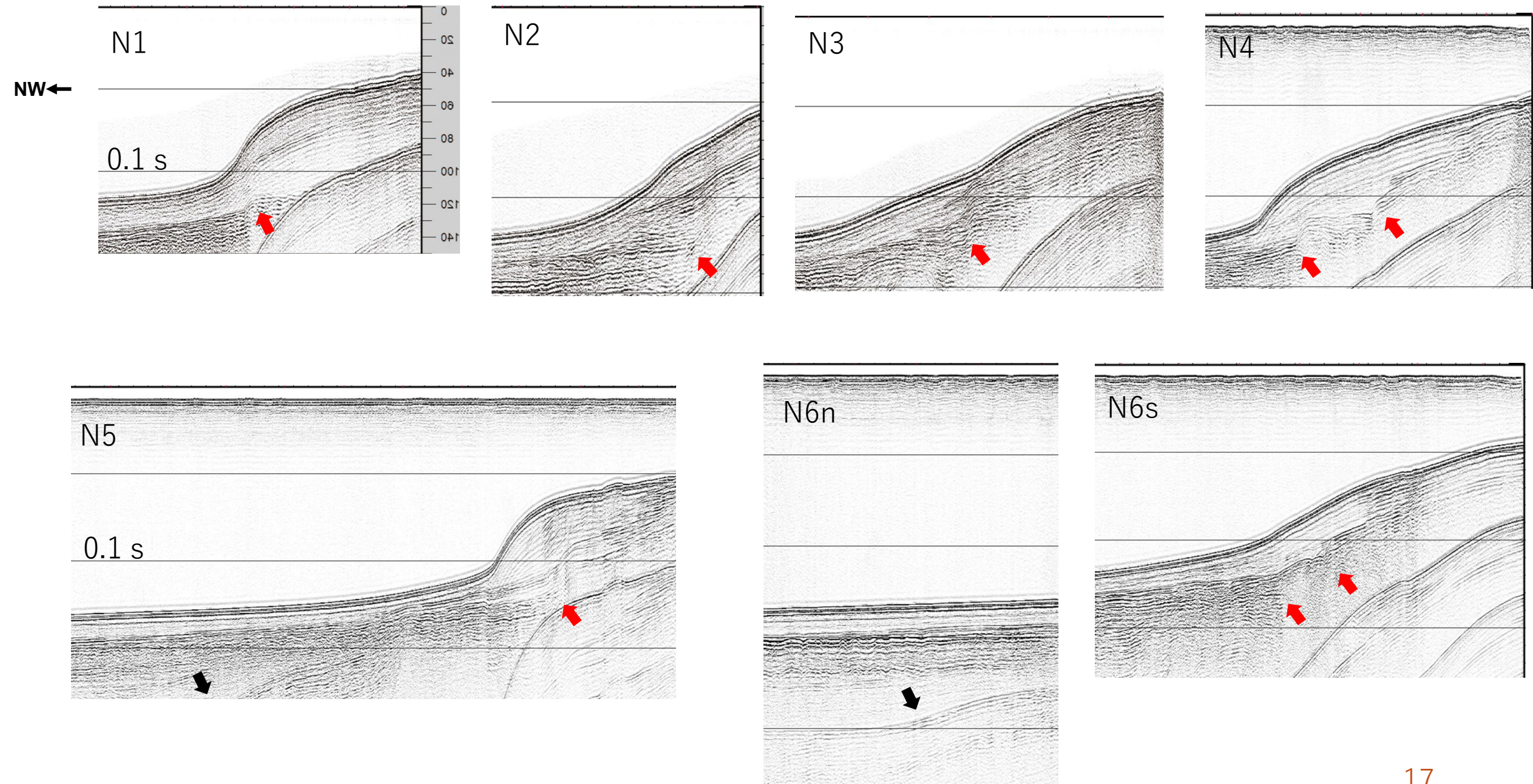
近畿－北陸沖海域活断層案及び反射断面 (能登半島北岸)

2024/2/2

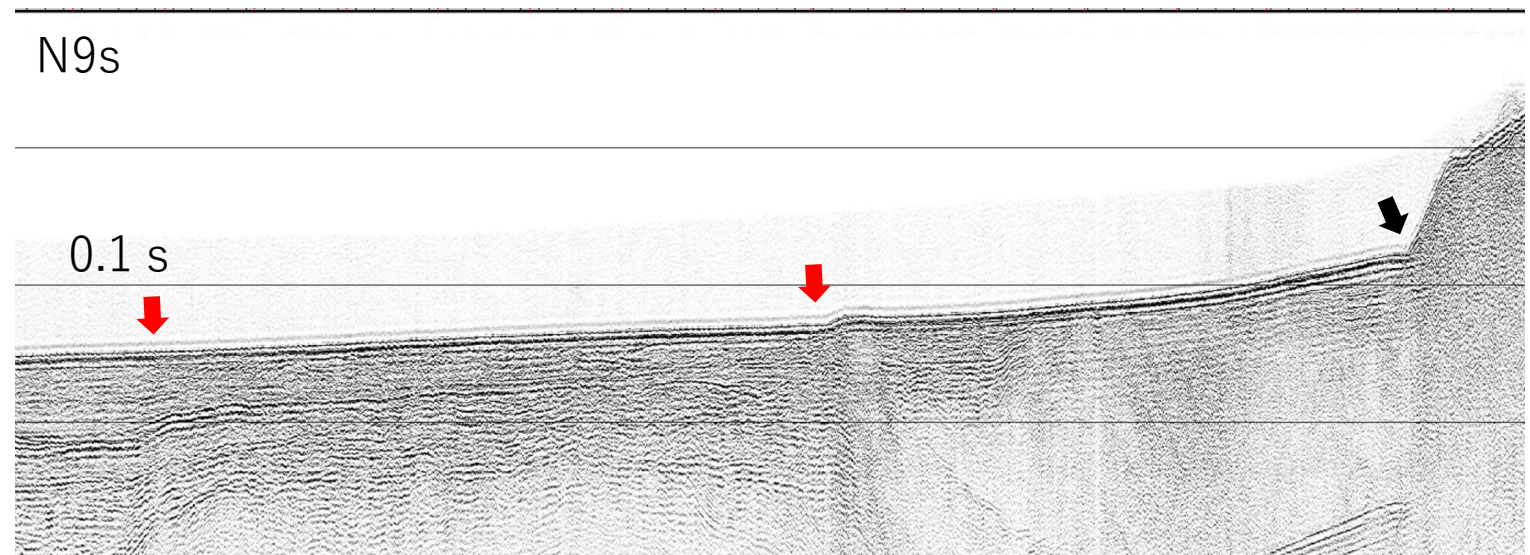
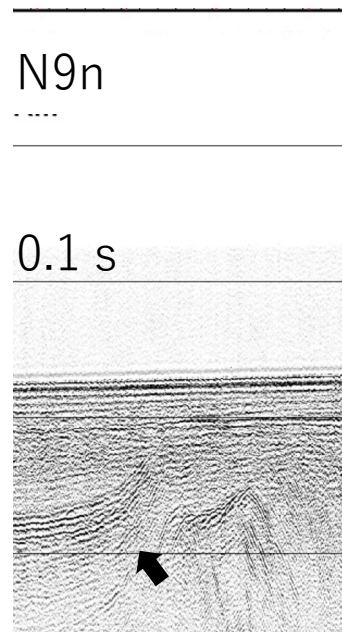
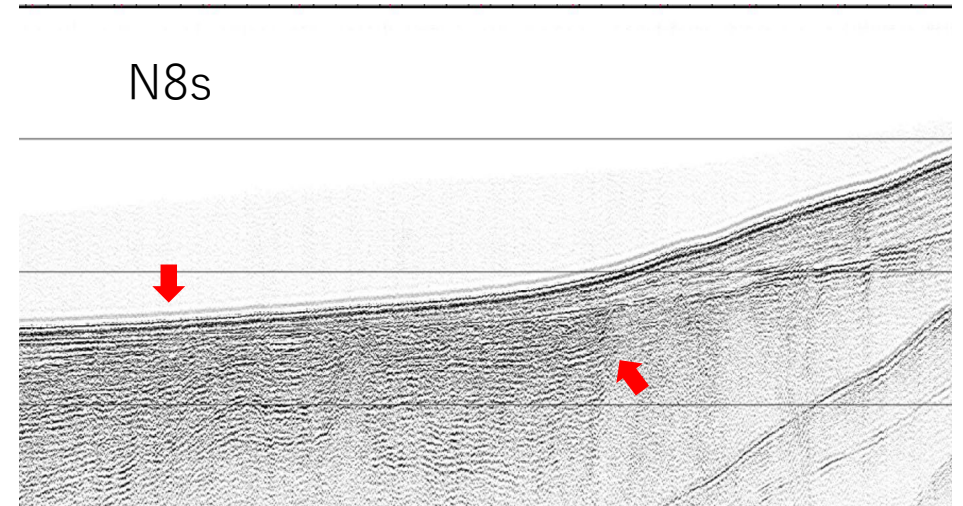
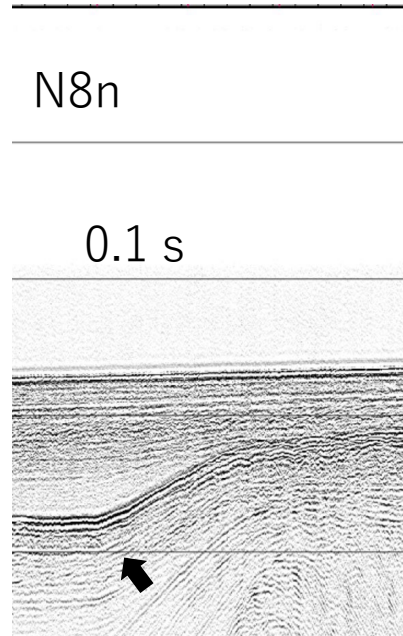
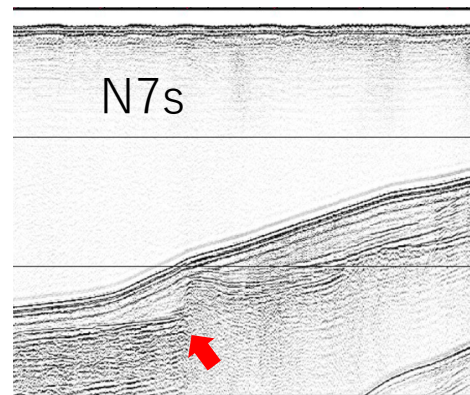
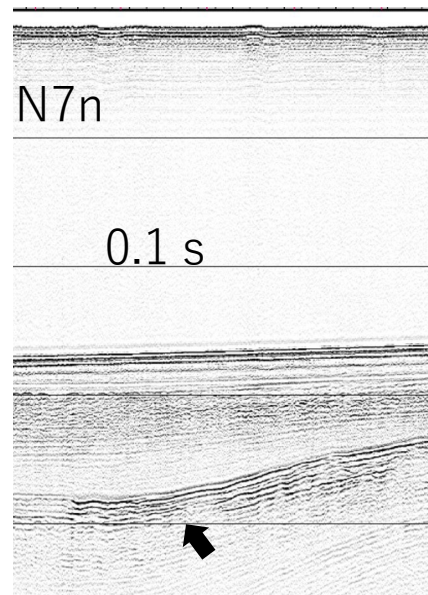
産業技術総合研究所
活断層・火山研究部門
岡村行信

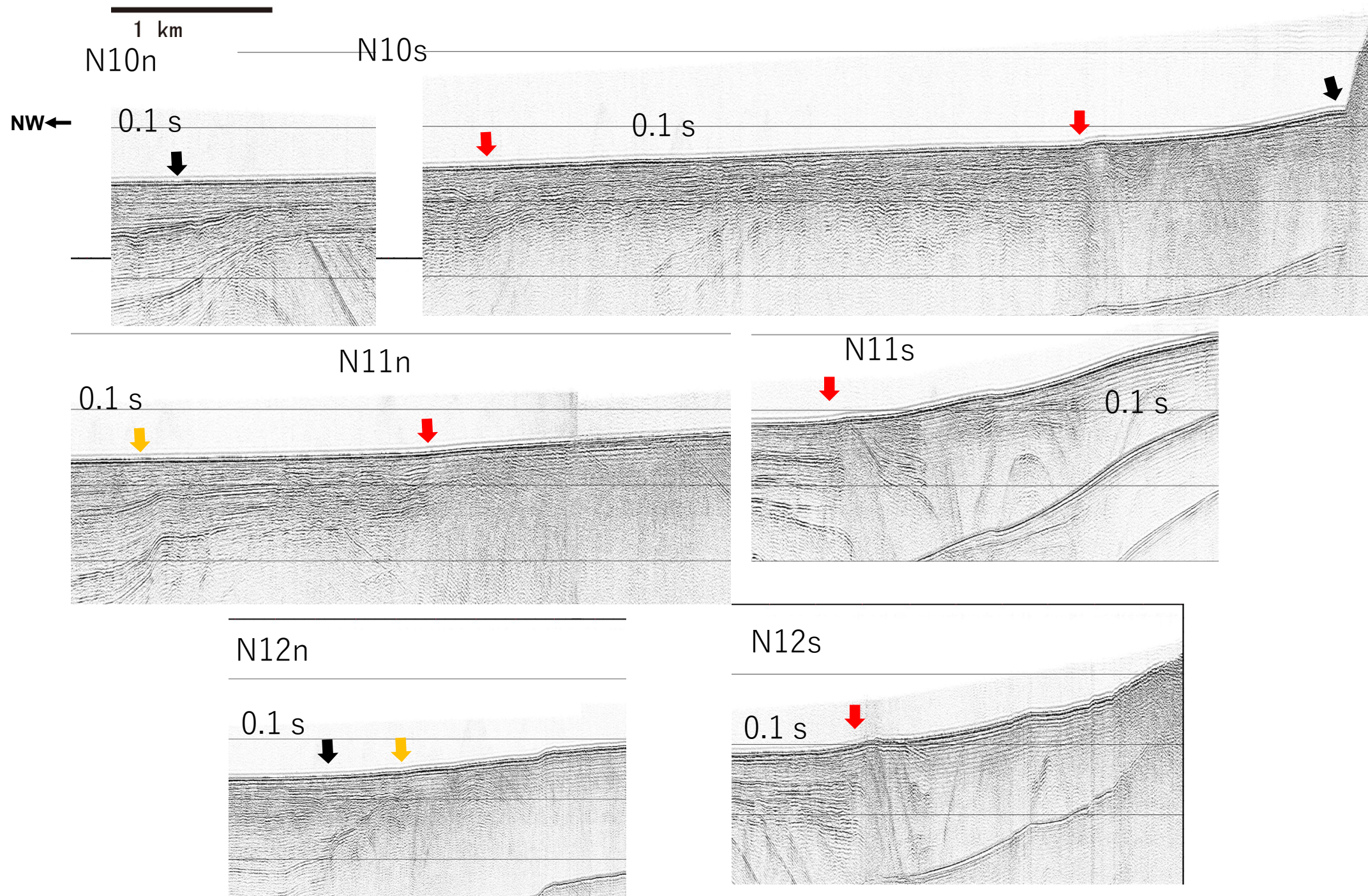






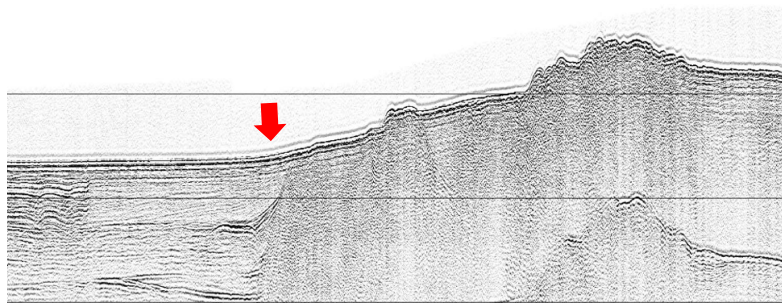
NW←



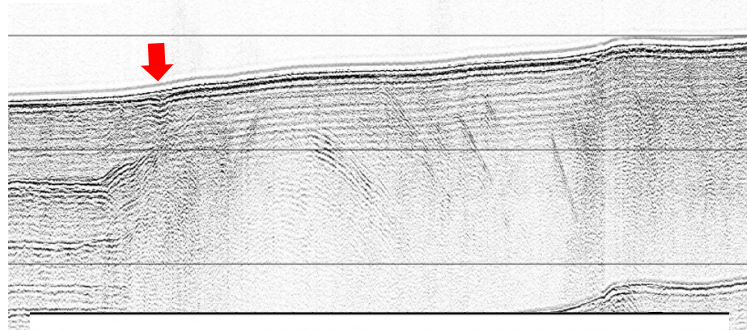


N13n

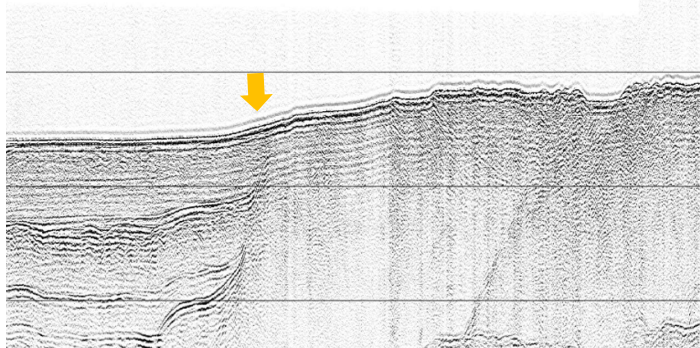
NW←



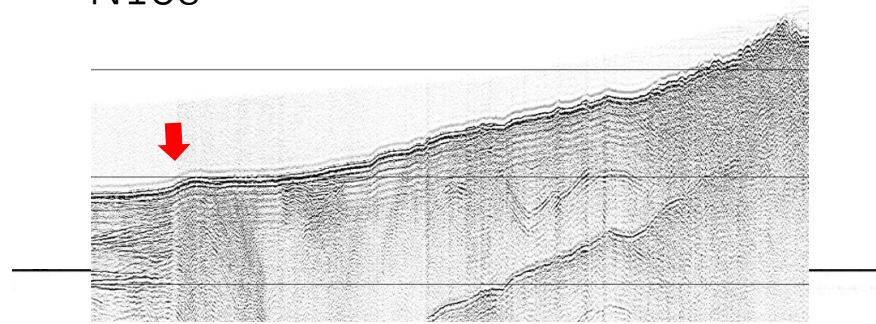
N14n



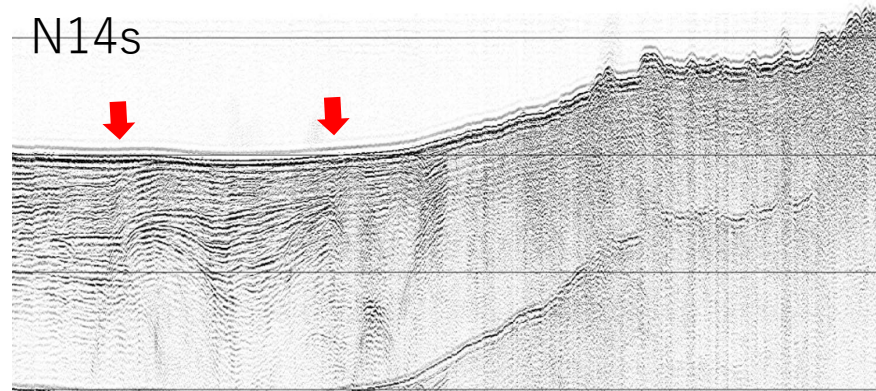
N15n



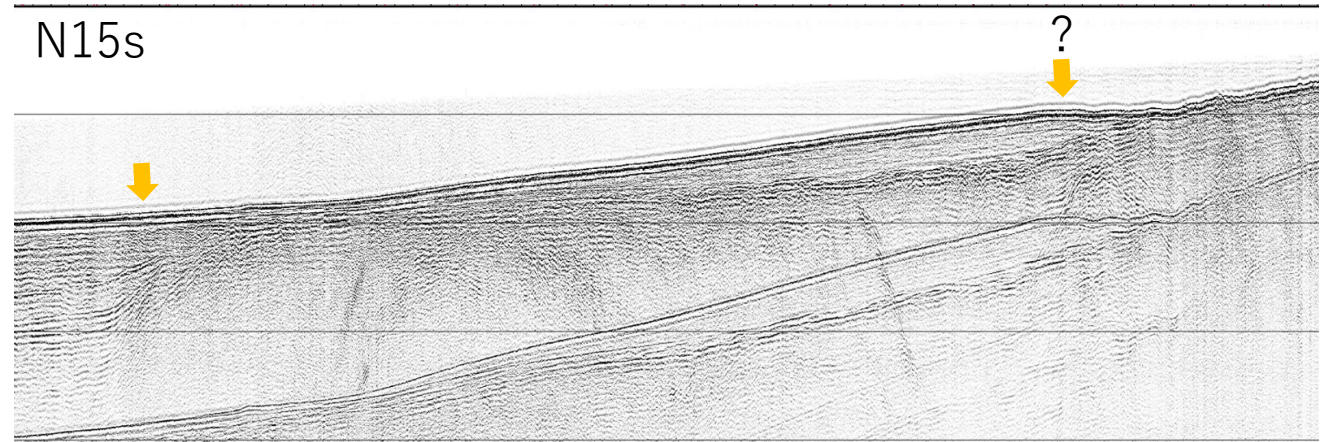
N13s



N14s



N15s



N16n

N16s

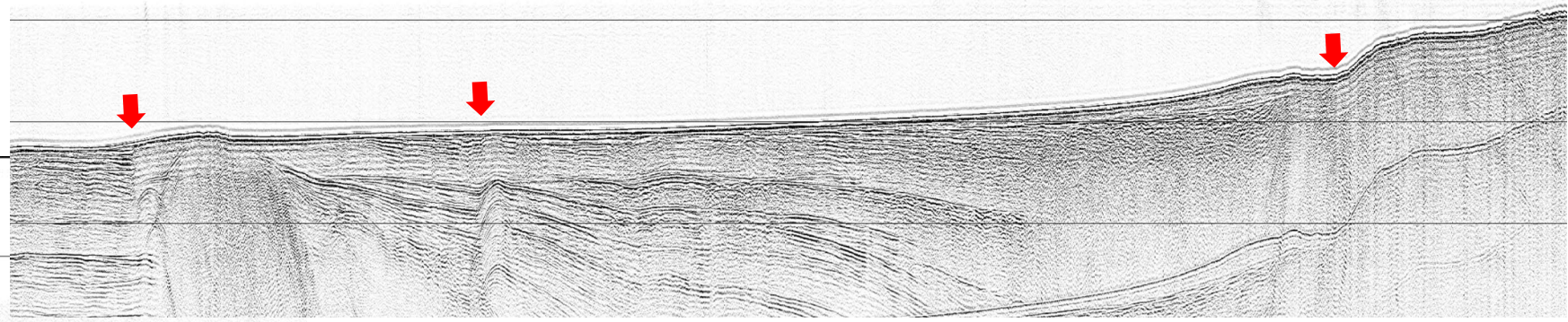
N17s

N17n

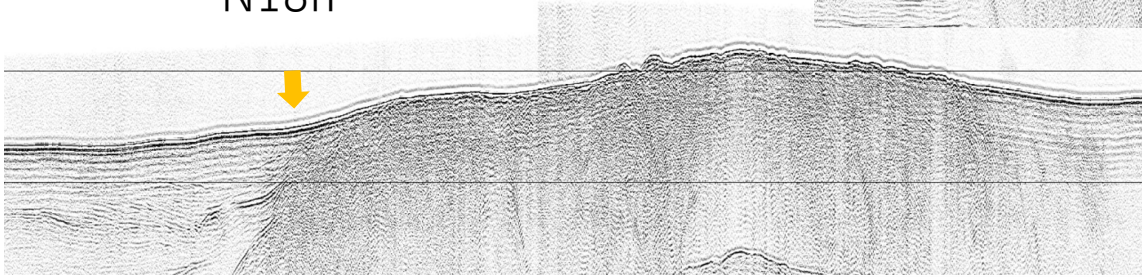
NW ←

NW ←

N18s



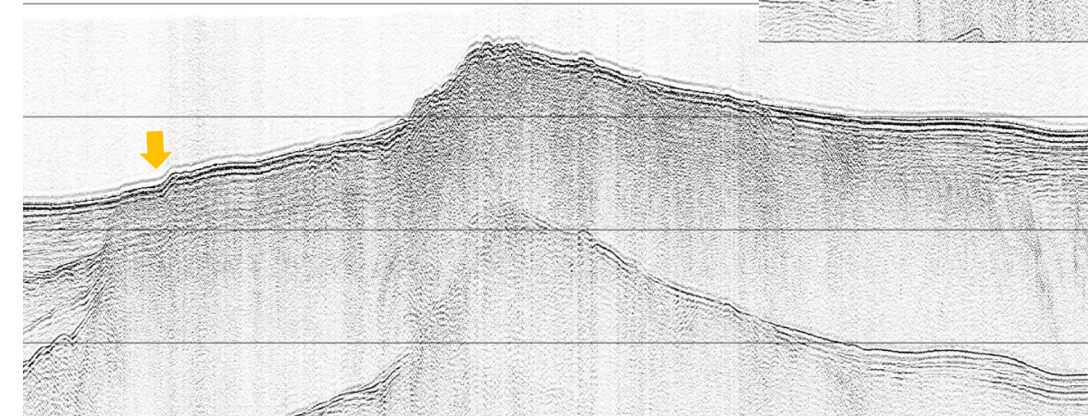
N18n



N19s

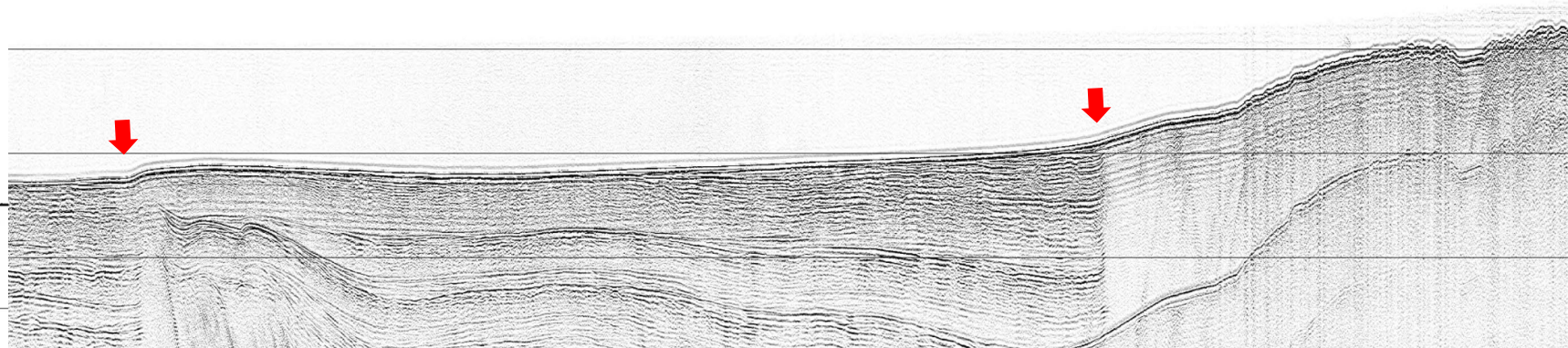


N19n

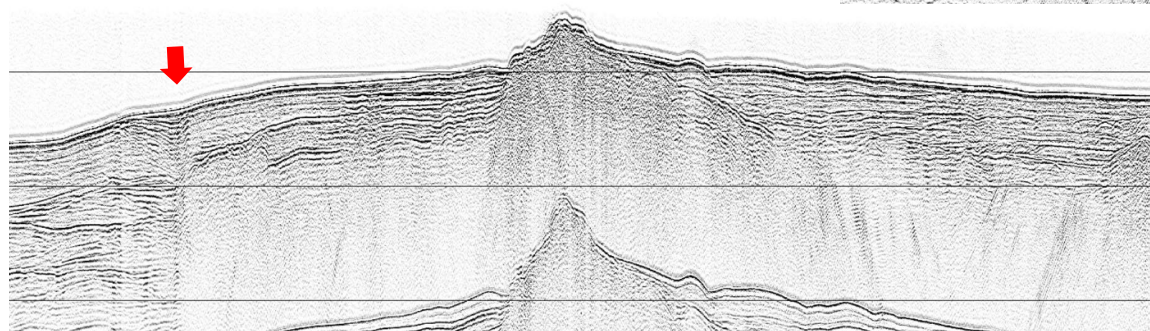


NW←

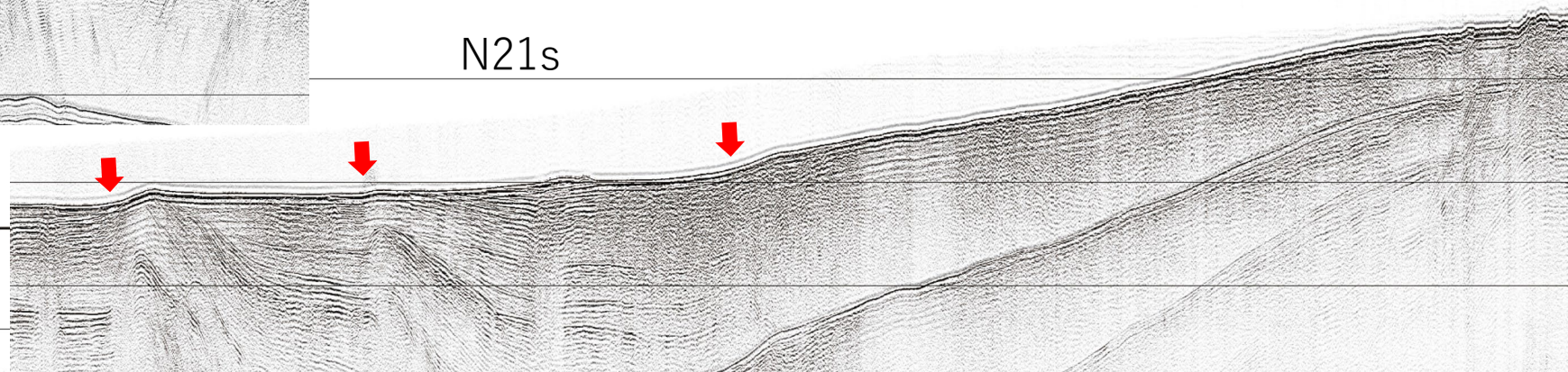
N20s



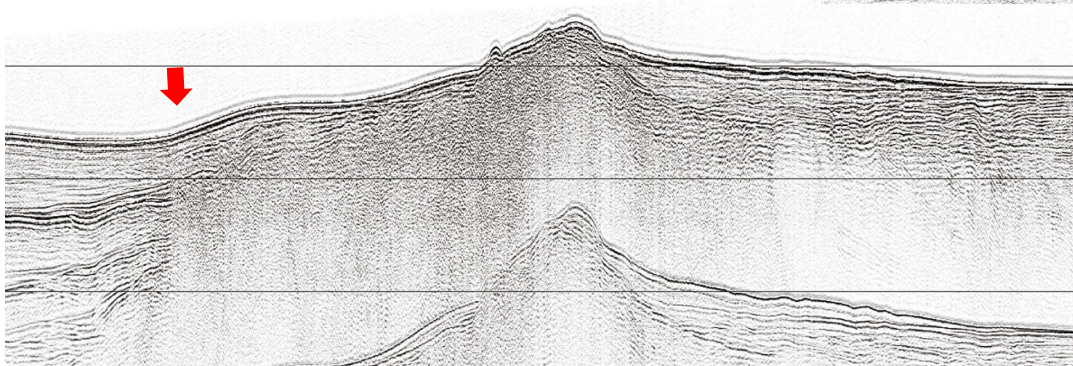
N20n



N21s



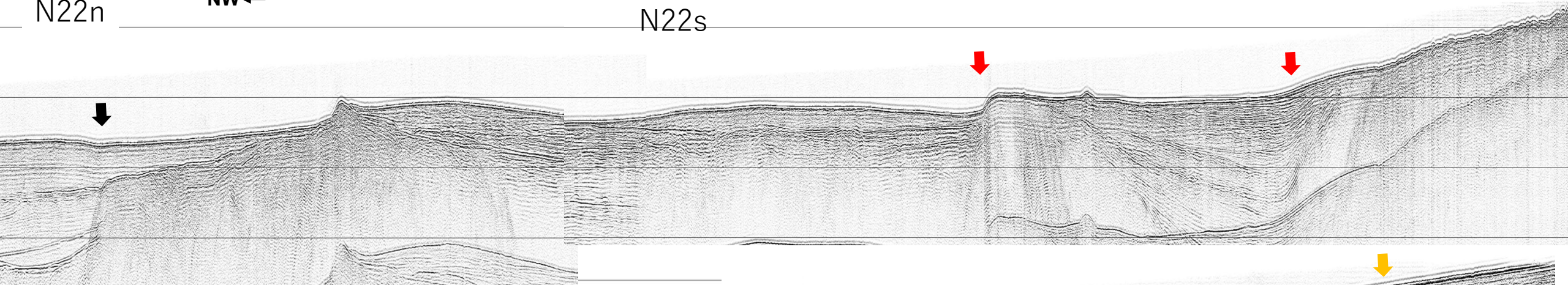
N21n



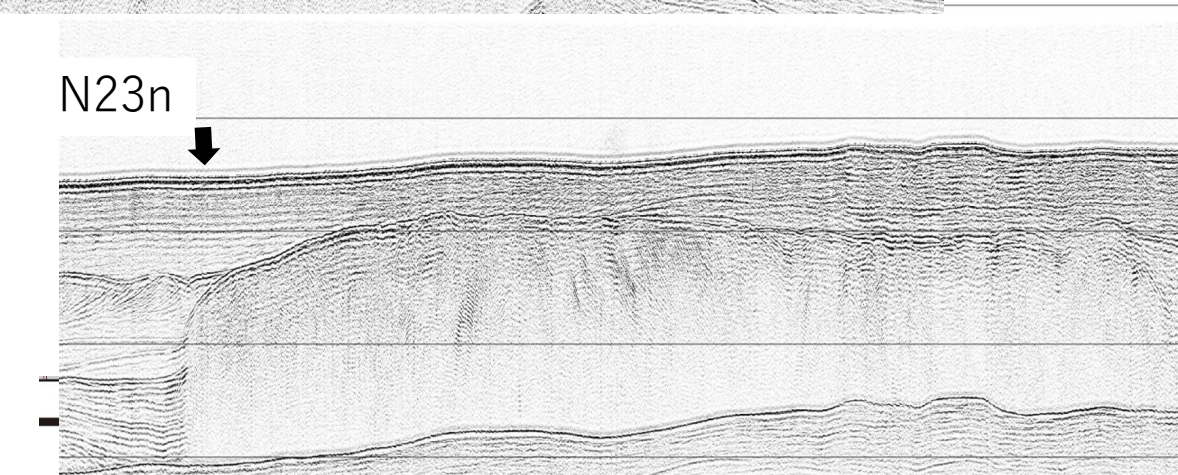
N22n

NW ←

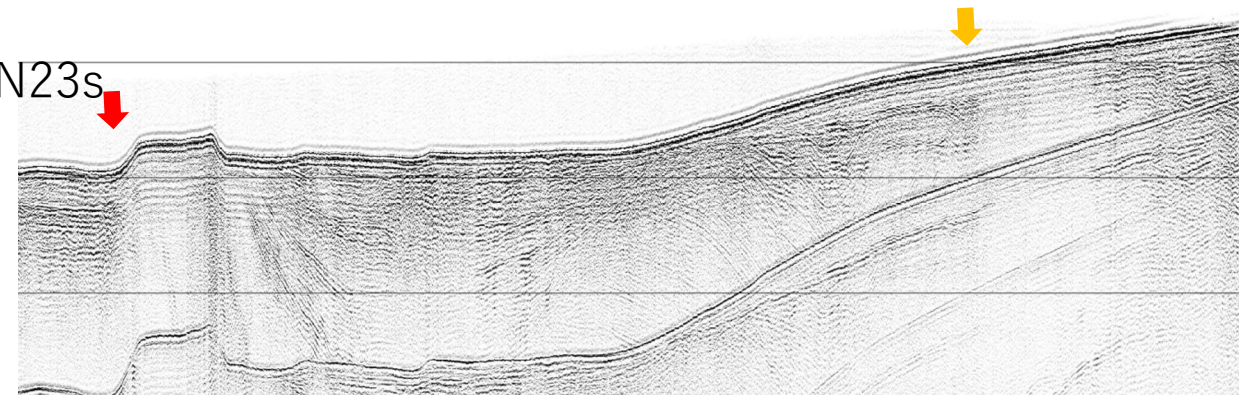
N22s



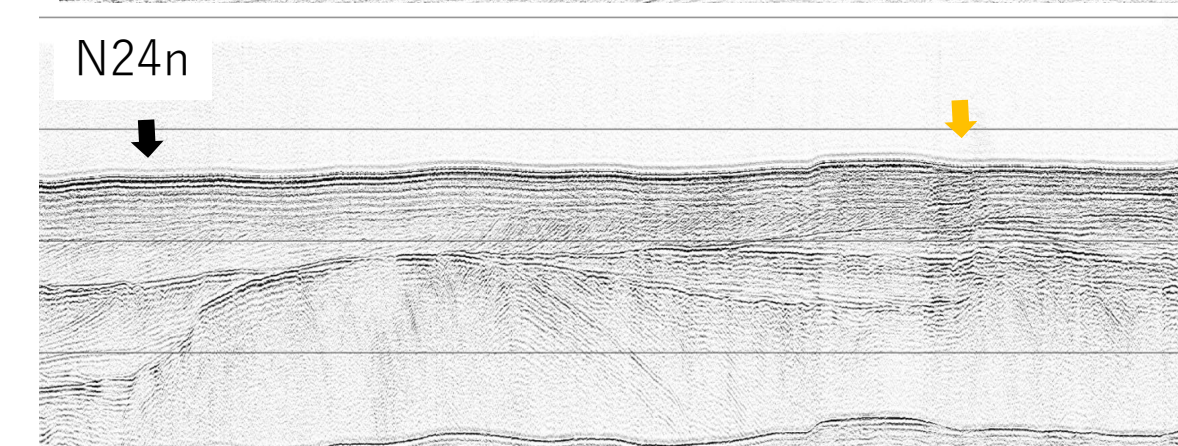
N23n



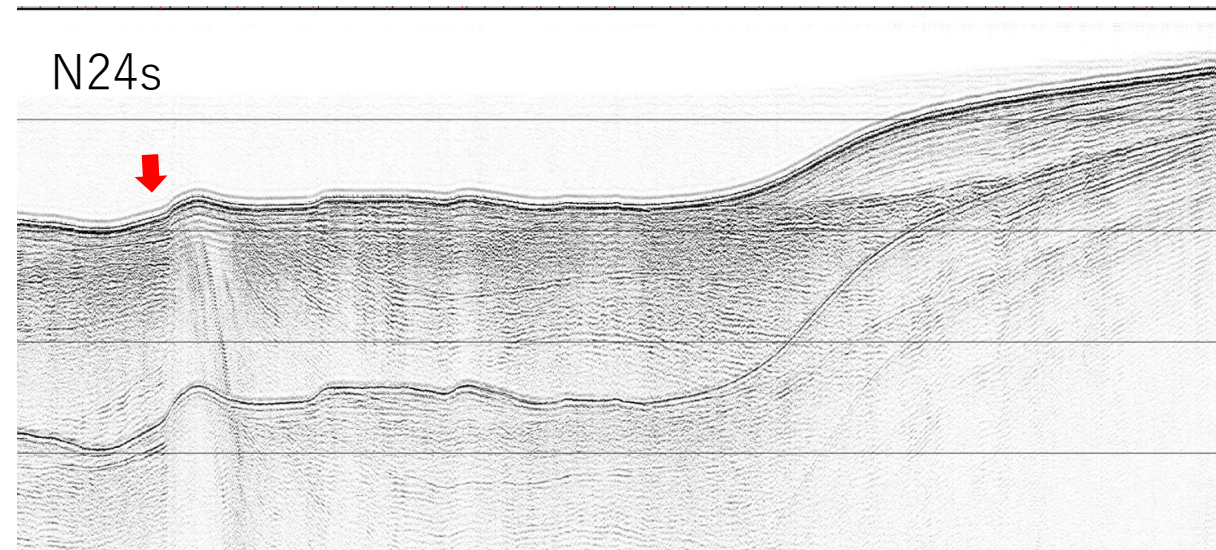
N23s



N24n



N24s



文献

- ・井上卓彦・岡村行信（2010）：能登半島北部周辺20万分の1 海域地質図及び説明書, 海陸シームレス地質情報集「能登半島北部沿岸域」.