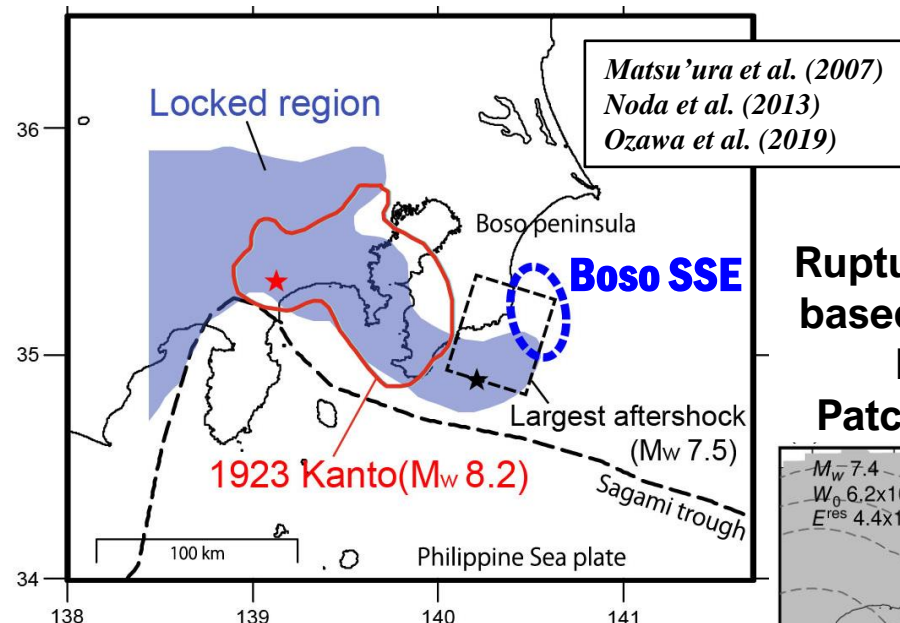
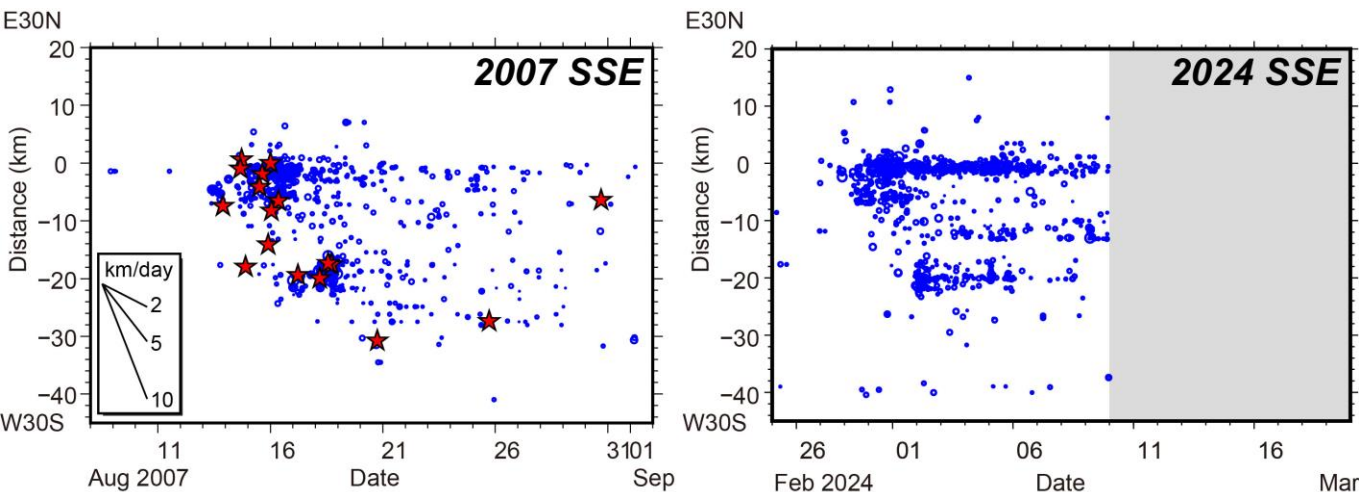
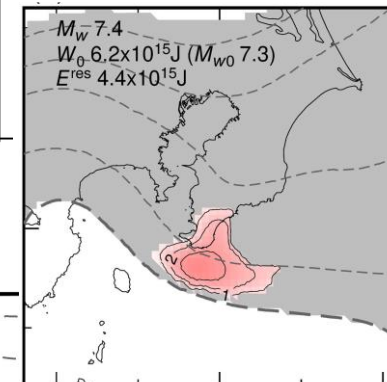


房総スロースリップ

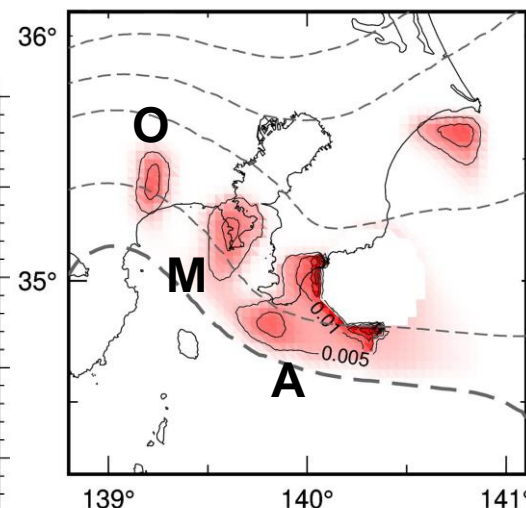
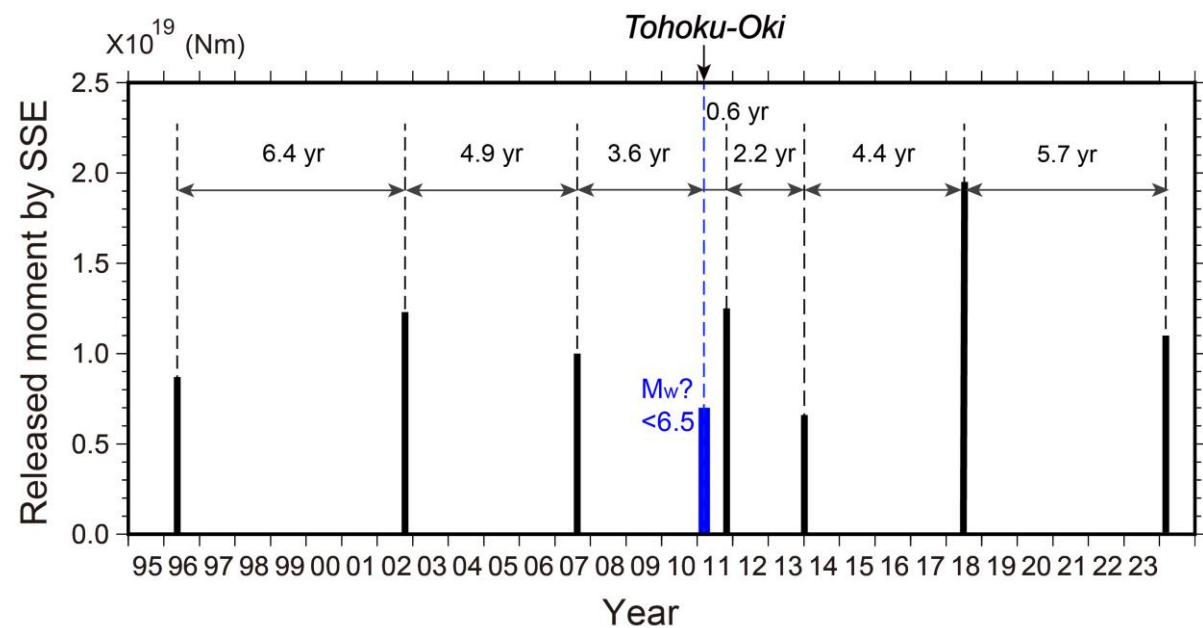
プレートマッチングによるイベント検出: 震源の移動速度: ~5 km/day



Rupture scenario based on energy budget
Patch A: Mw7.4



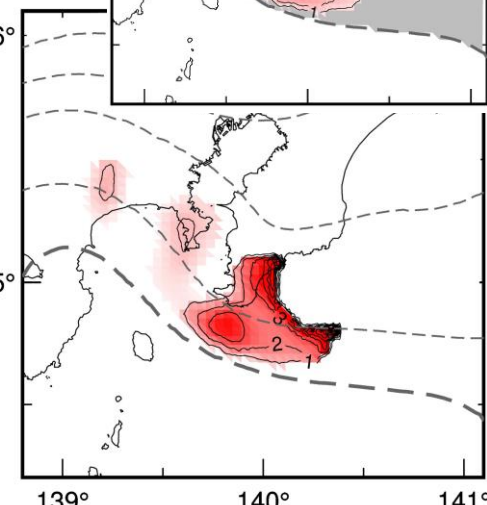
スロースリップの発生履歴 (黒: Ozawa+2019, 青: Kato+2014)



一定速度で
 応力蓄積

Patches O and M
 for 100 yr
 since 1923
 Patch A for 320 yr
 since 1703

Saito and Noda (2023)



Stress accumulation (MPa)