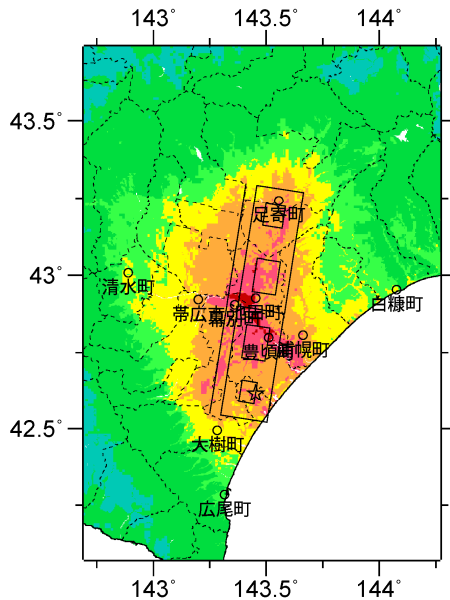
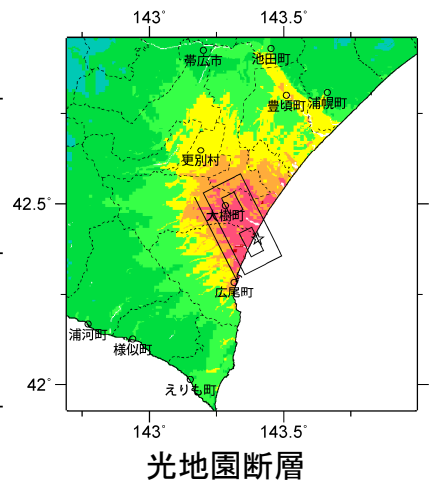


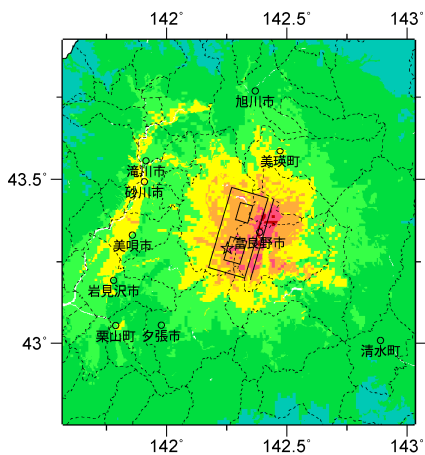
標津断層帯



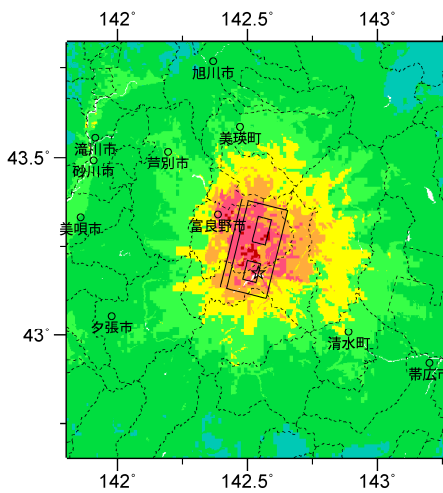
十勝平野断層帯主部



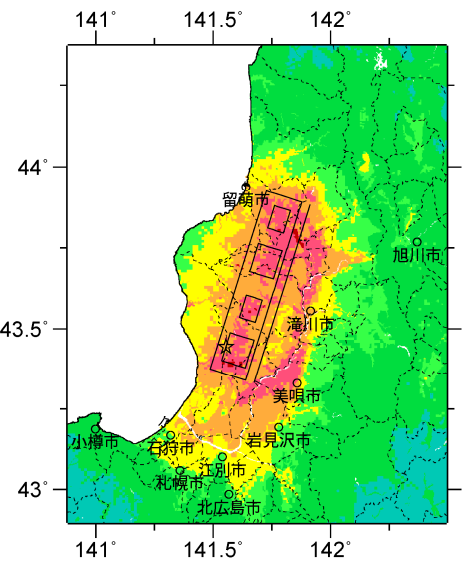
光地園断層



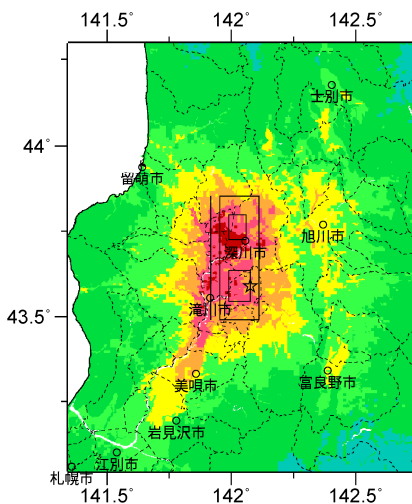
富良野断層帯西部



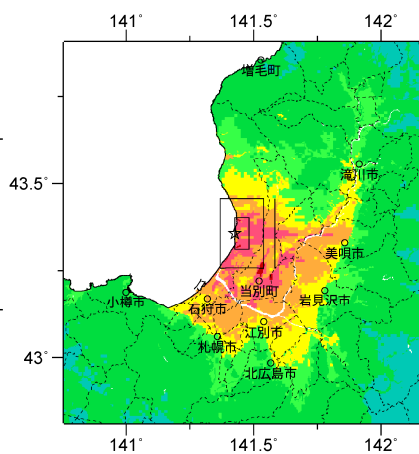
富良野断層帯東部



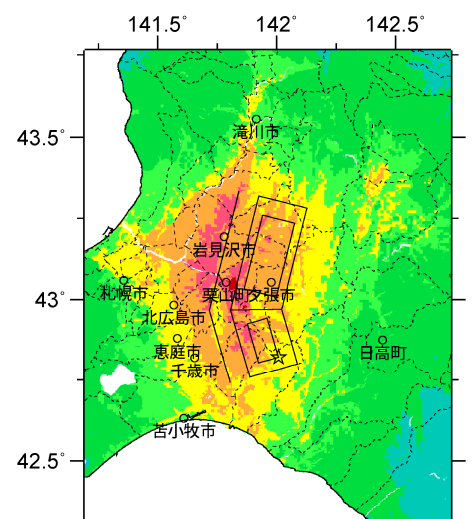
増毛山地東縁断層帯



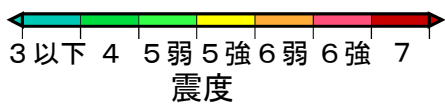
沼田-砂川付近の断層帯



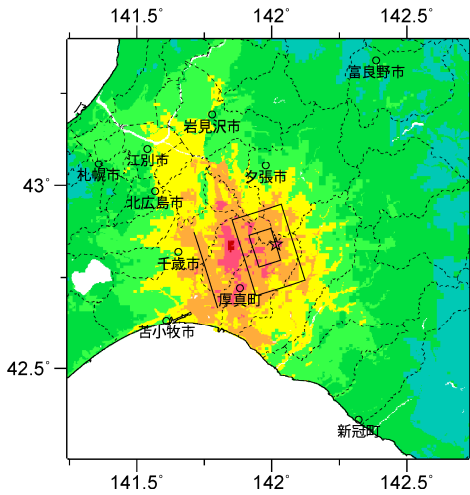
当別断層



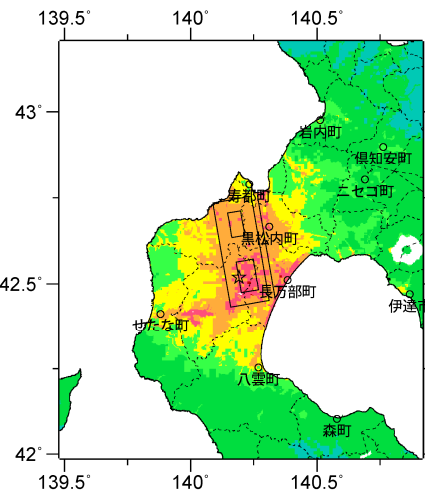
石狩低地東縁断層帯主部



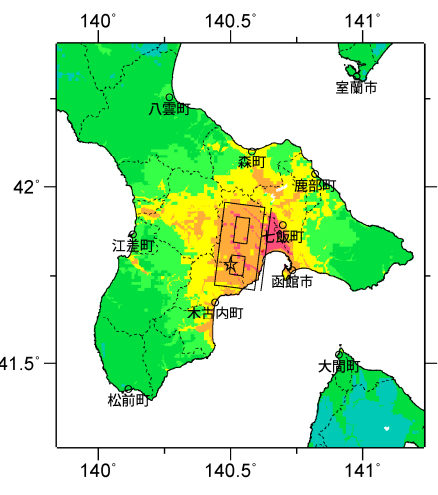
震源断層を特定した地震動予測地図  
各断層帯の代表ケース（ケース1）の震度



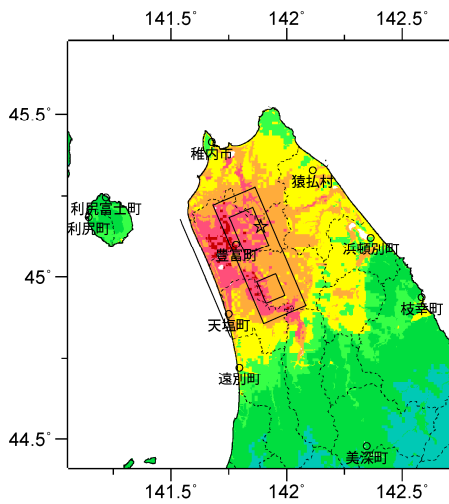
石狩低地東縁断層帯南部



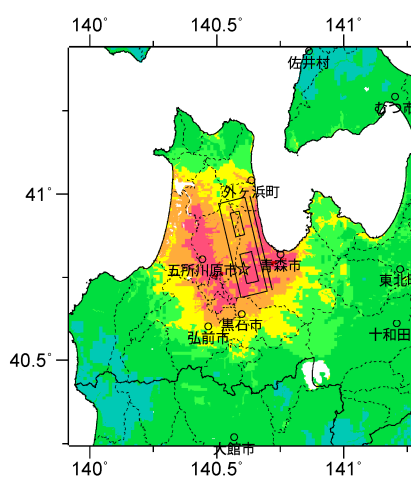
黒松内低地断層帯



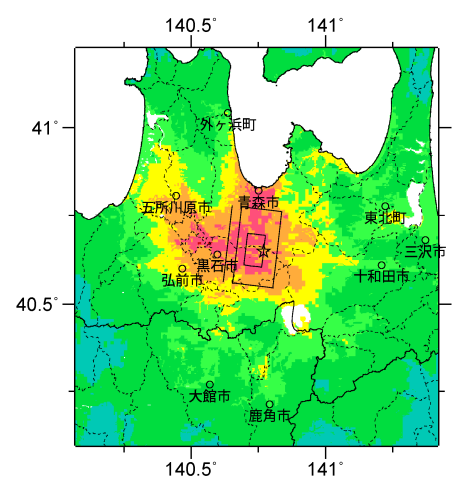
函館平野西縁断層帯



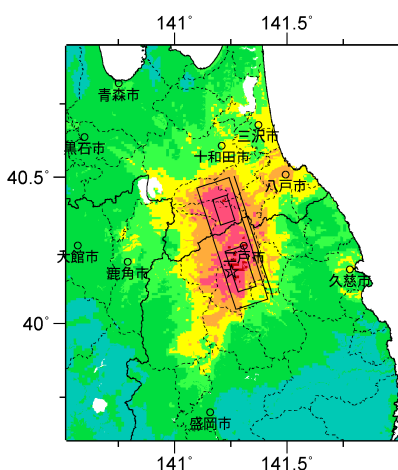
サロベツ断層帯



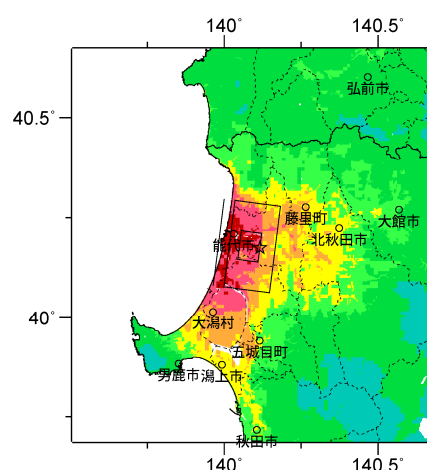
青森湾西岸断層帯



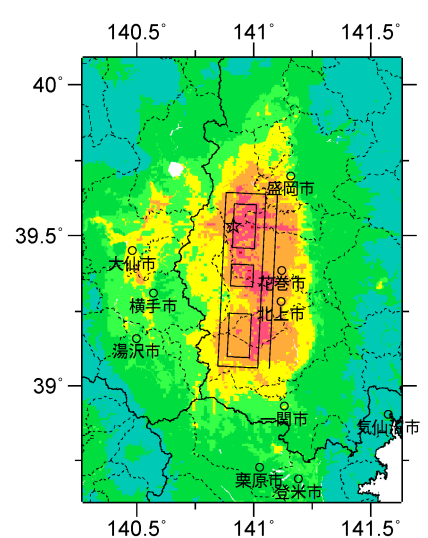
津軽山地西縁断層帯南部



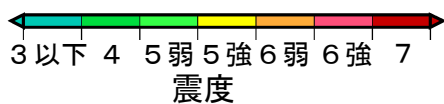
折爪断層



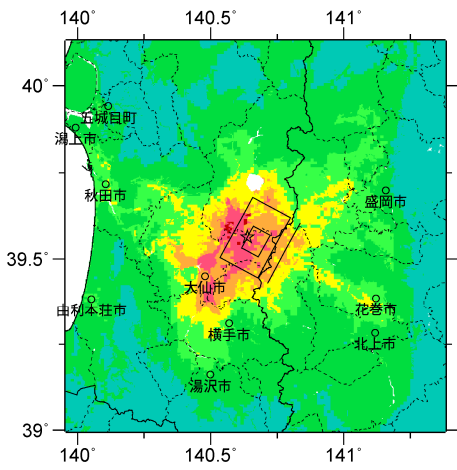
能代断層帯



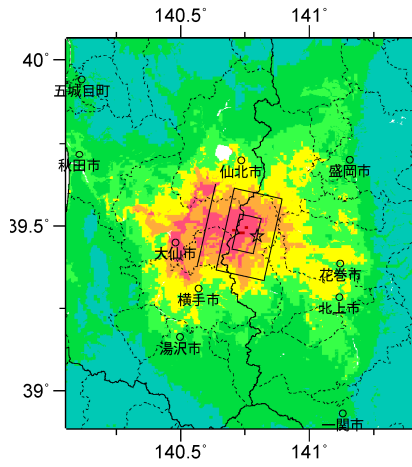
北上低地西縁断層帯



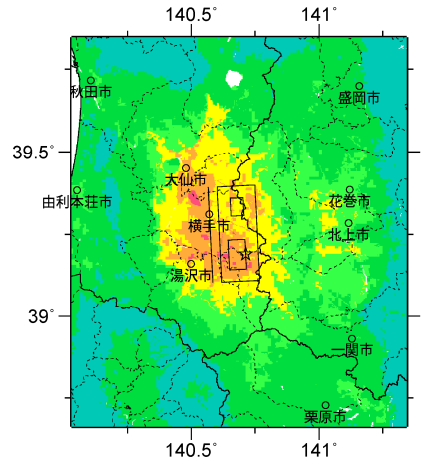
震源断層を特定した地震動予測地図  
各断層帯の代表ケース（ケース1）の震度



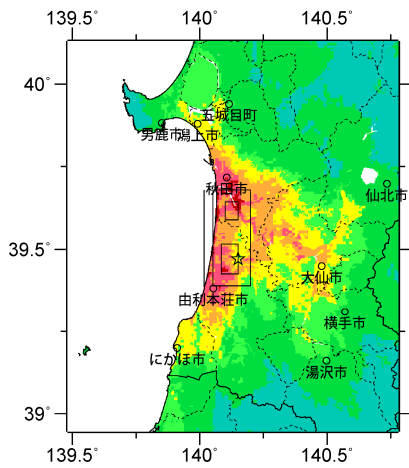
真昼山地東縁断層帯北部



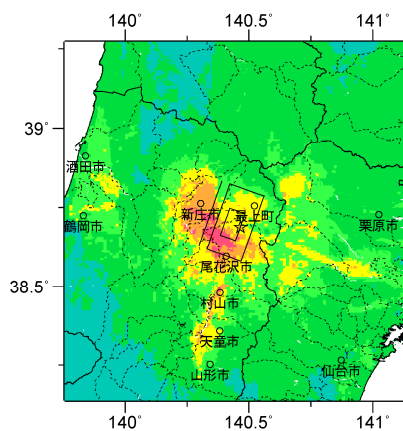
横手盆地東縁断層帯北部



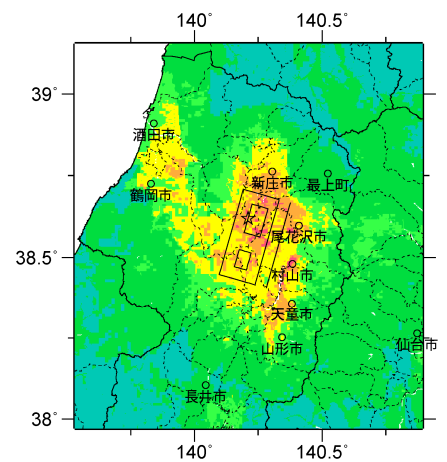
横手盆地東縁断層帯南部



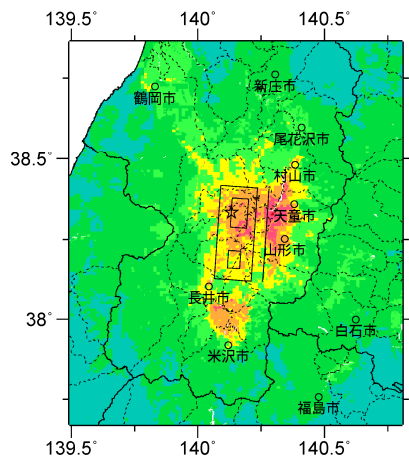
北由利断層



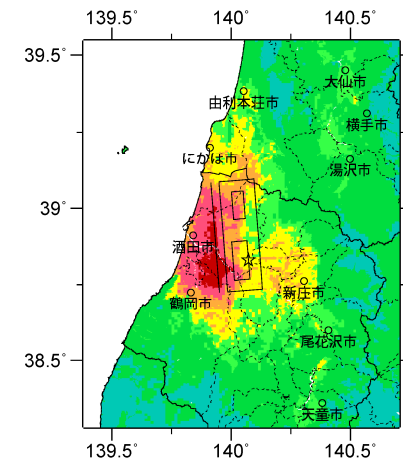
新庄盆地断層帯



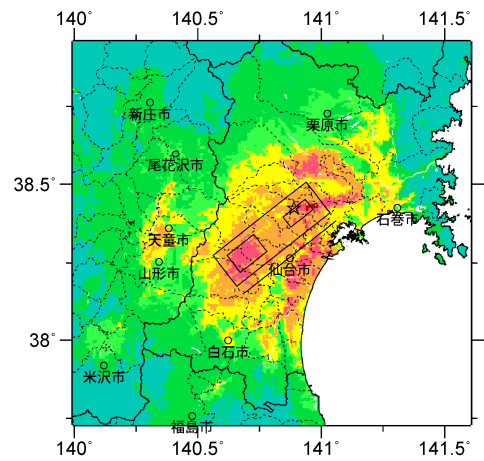
山形盆地断層帯北部



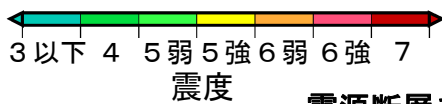
山形盆地断層帯南部



庄内平野東縁断層帯

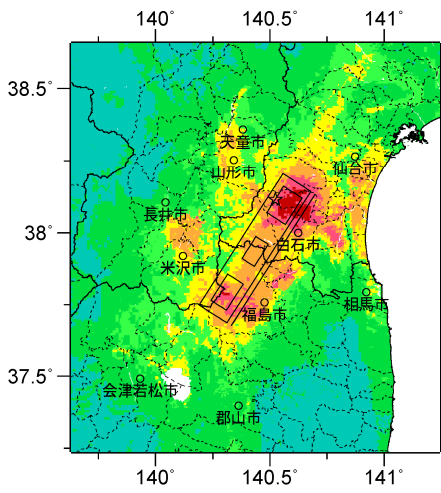


長町-利府線断層帯

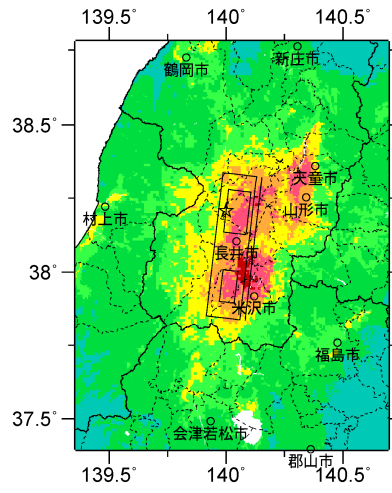


震源断層を特定した地震動予測地図  
各断層帯の代表ケース（ケース1）の震度

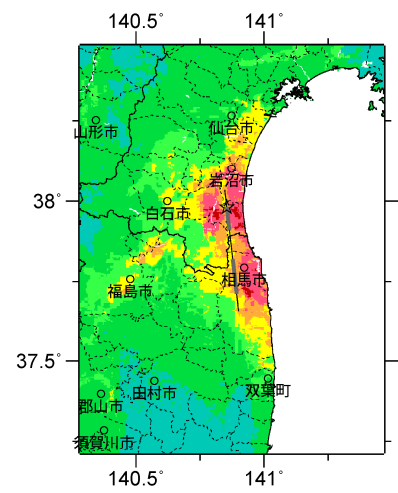




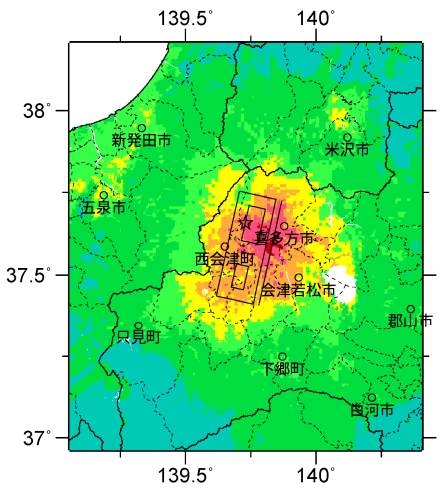
福島盆地西縁断層帯



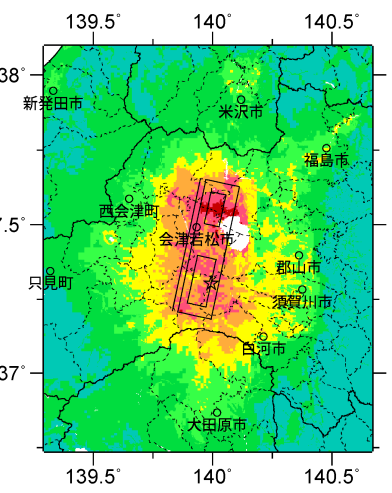
長井盆地西縁断層帯



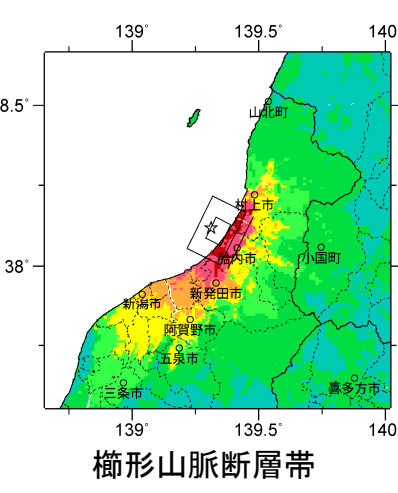
双葉断層



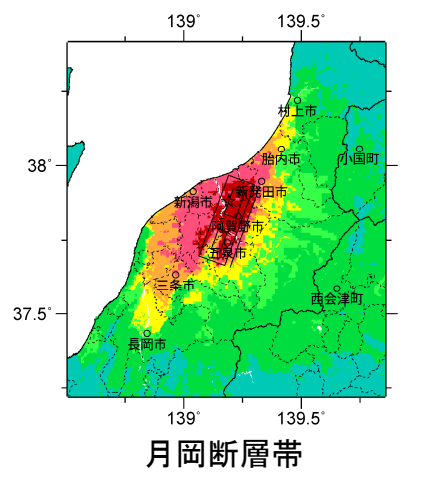
会津盆地西縁断層帯



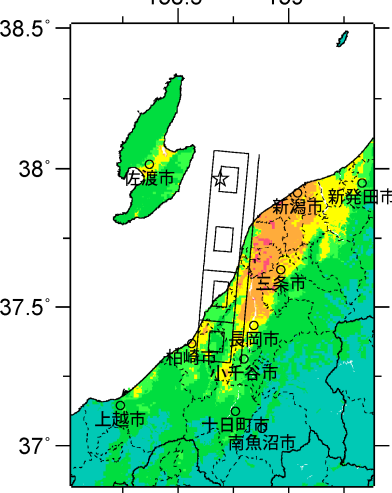
会津盆地東縁断層帯



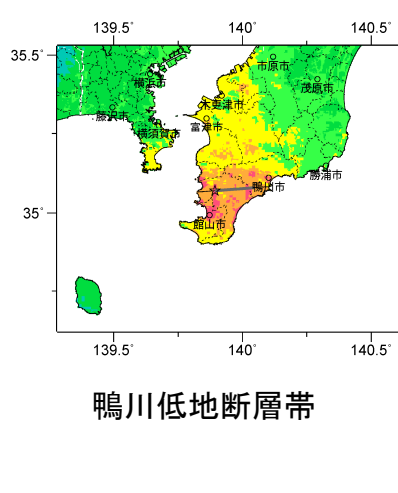
櫛形山脈断層帯



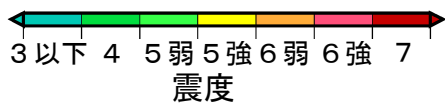
月岡断層帯



長岡平野西縁断層帯



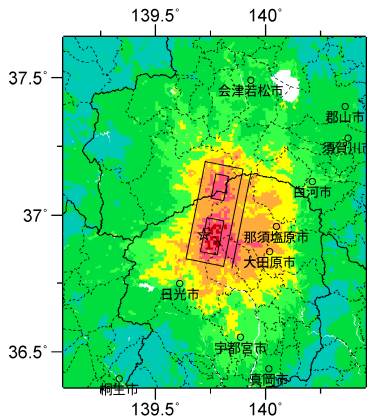
鴨川低地断層帯



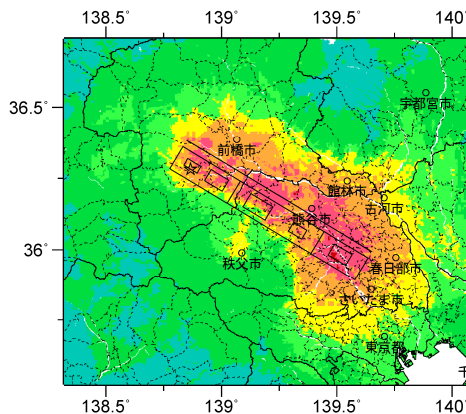
震度

震源断層を特定した地震動予測地図  
各断層帯の代表ケース（ケース1）の震度

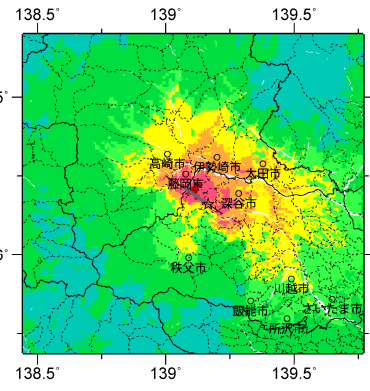




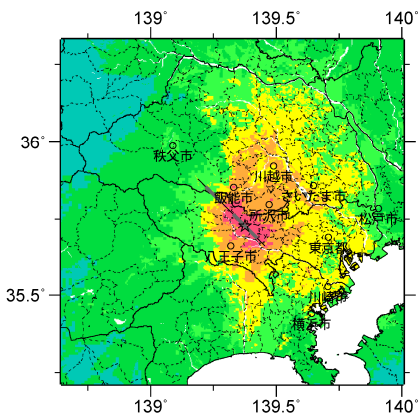
関谷断層



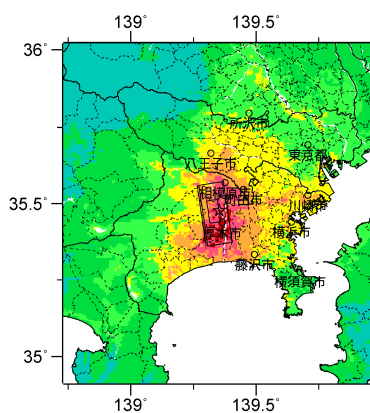
関東平野北西縁断層帯主部



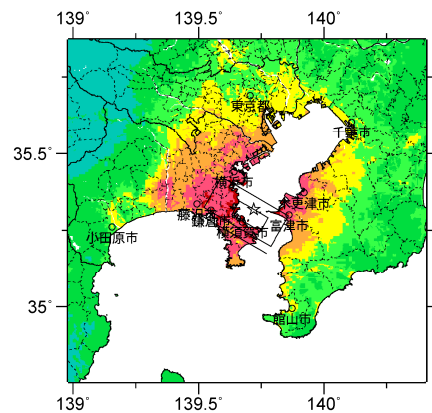
平井-櫛挽断層帯



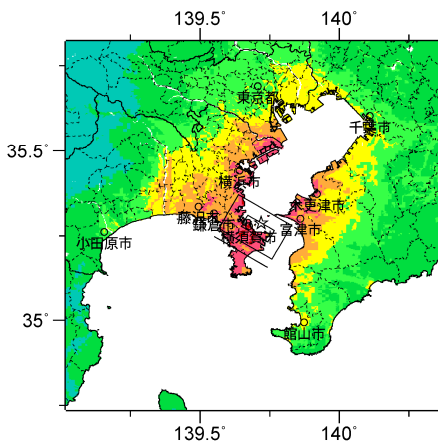
立川断層帯



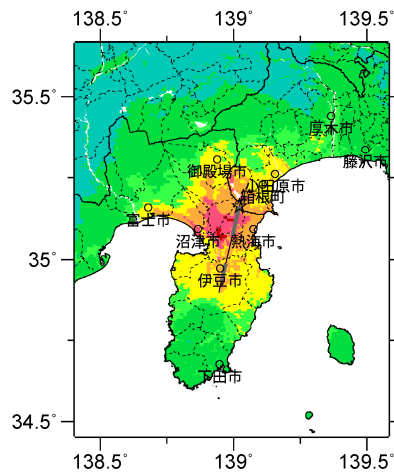
伊勢原断層



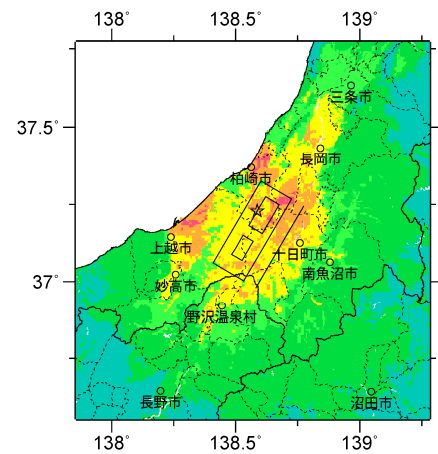
三浦半島断層群主部  
衣笠・北武断層帯



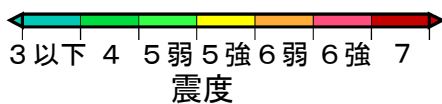
三浦半島断層群主部  
武山断層帯



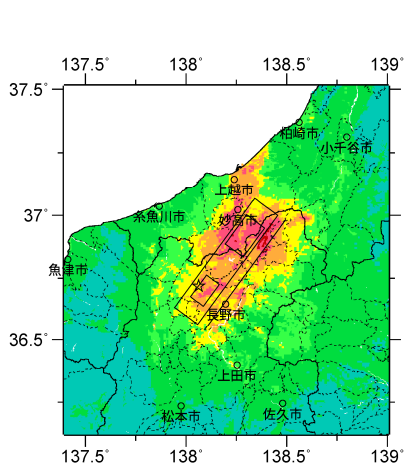
北伊豆断層帯



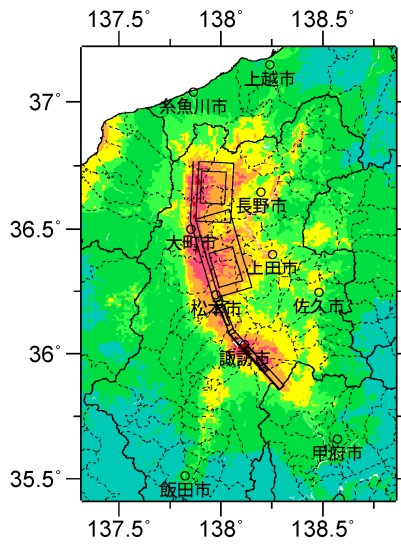
十日町断層帯西部



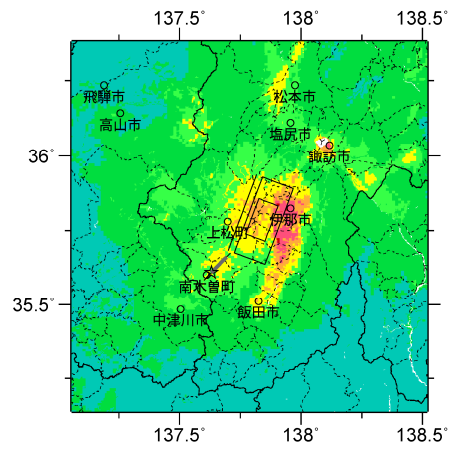
震源断層を特定した地震動予測地図  
各断層帯の代表ケース（ケース1）の震度



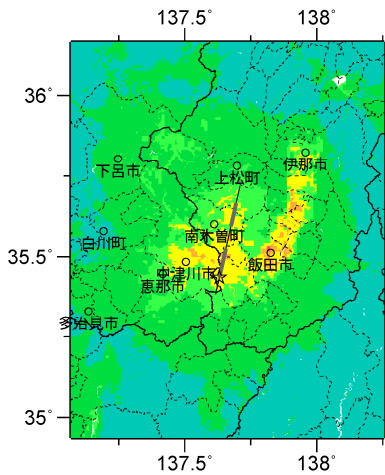
長野盆地西縁断層帯



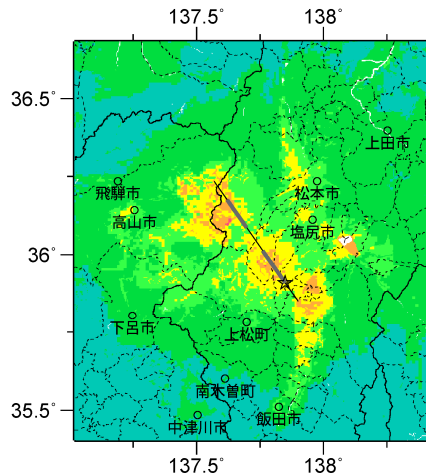
糸魚川-静岡構造線断層帯  
北部・中部



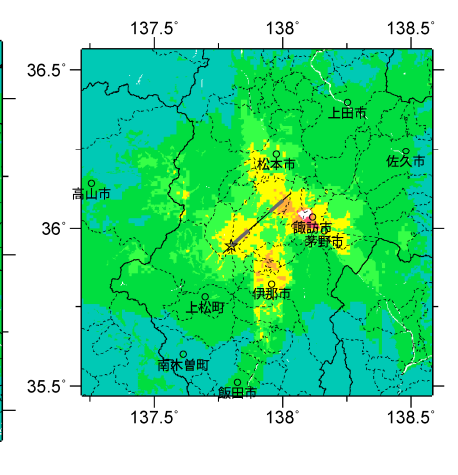
木曽山脈西縁断層帯  
主部北部



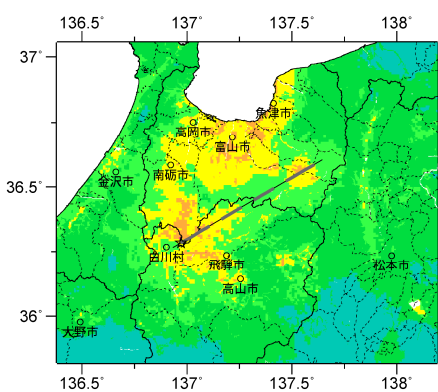
清内路峠断層帯



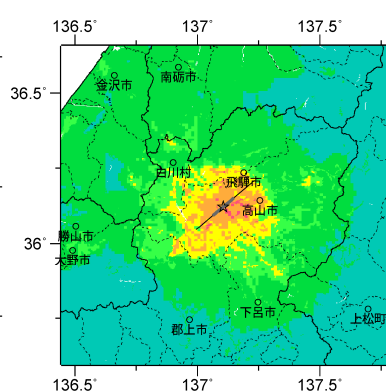
境峠・神谷断層帯主部



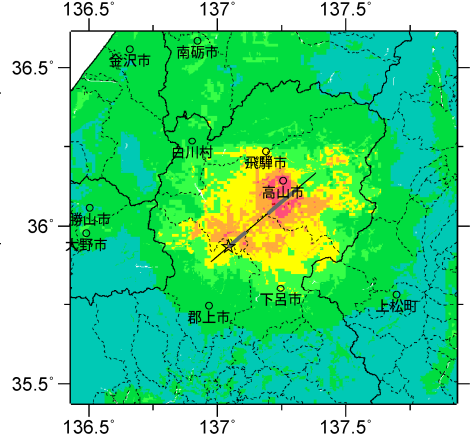
霧訪山-奈良井断層帯



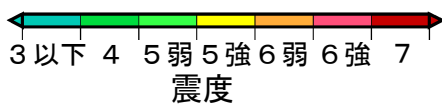
跡津川断層帯



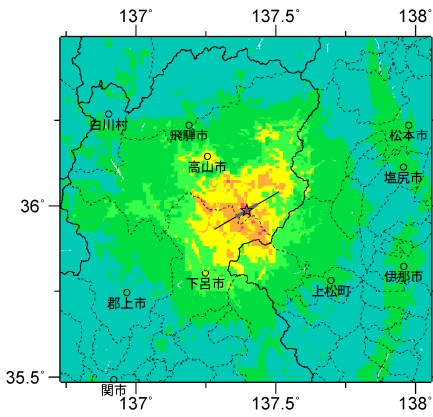
国府断層帯



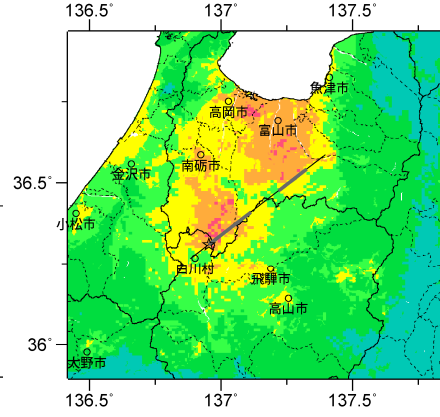
高山断層帯



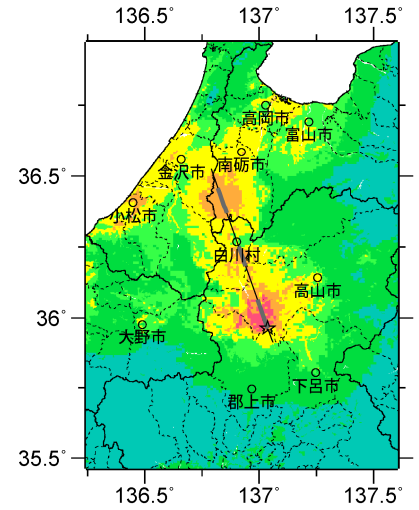
震源断層を特定した地震動予測地図  
各断層帯の代表ケース（ケース1）の震度



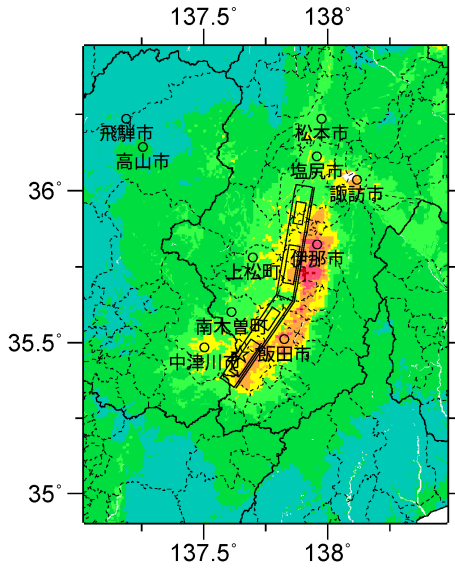
猪之鼻断層帯



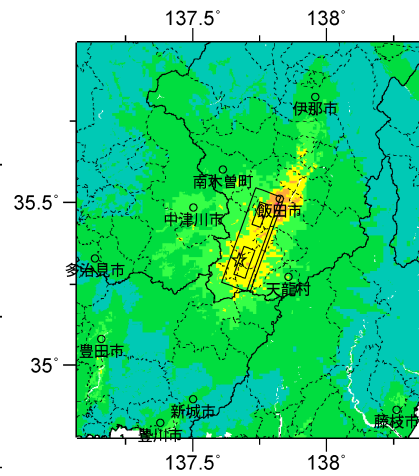
牛首断層帯



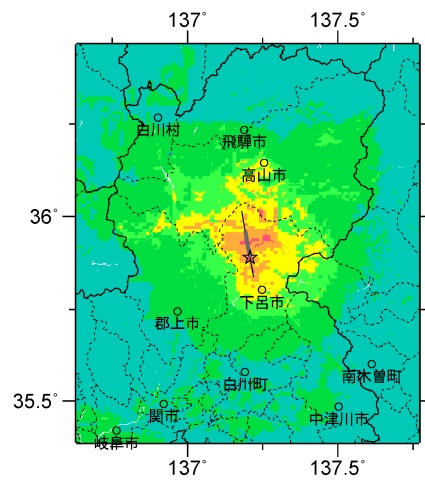
庄川断層帯



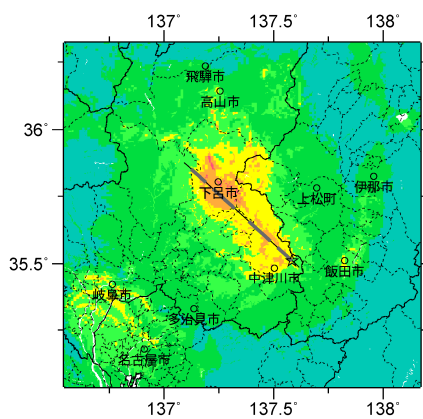
伊那谷断層帯主部



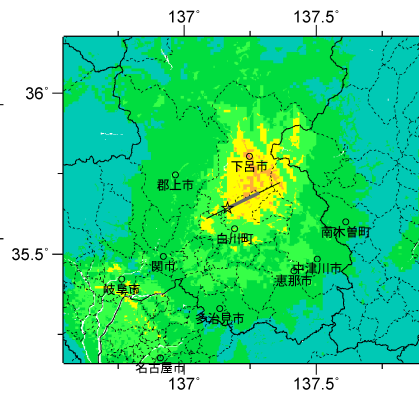
伊那谷断層帯南東部



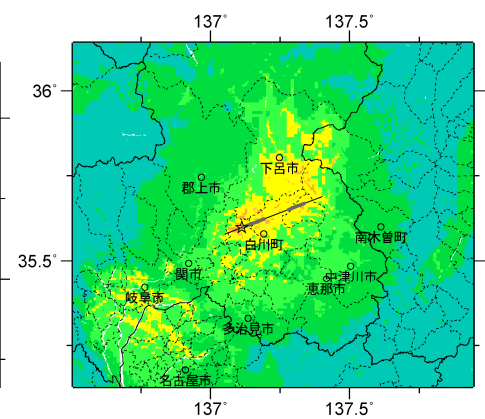
阿寺断層帯主部北部



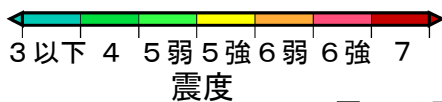
阿寺断層帯主部南部



佐見断層帯

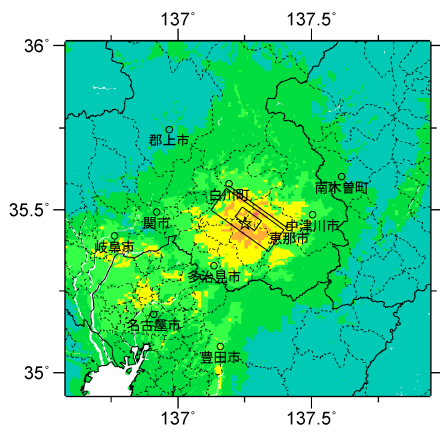


白川断層帯

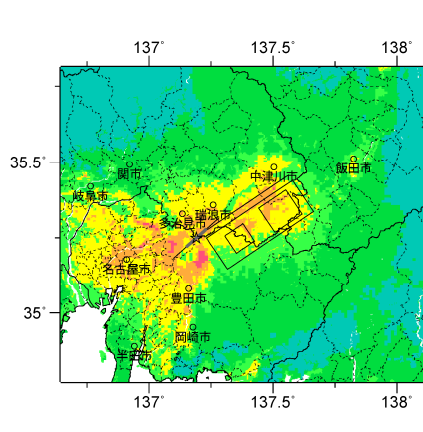


震源断層を特定した地震動予測地図  
各断層帯の代表ケース（ケース1）の震度

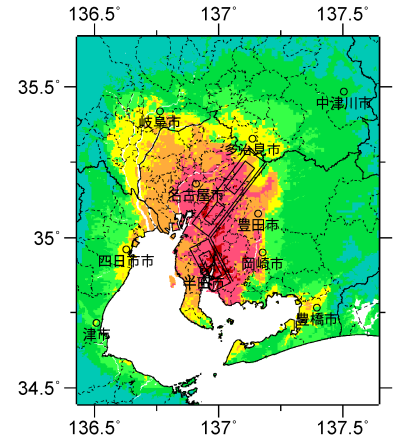




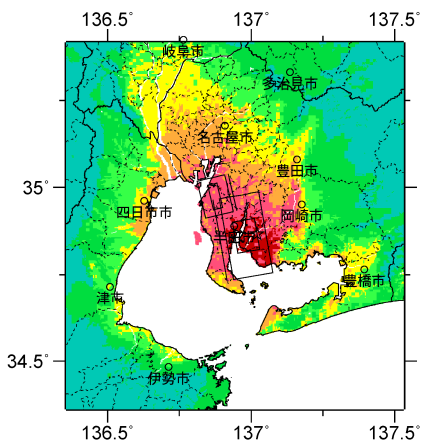
赤河断層帯



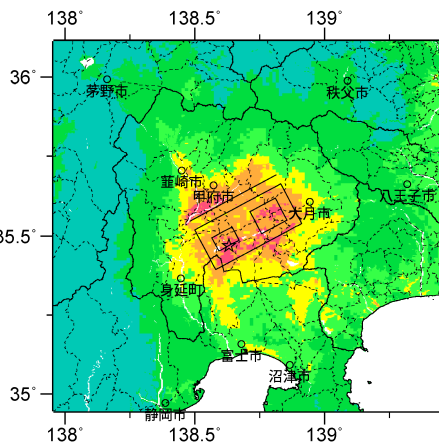
恵那山-猿投山北断層帯



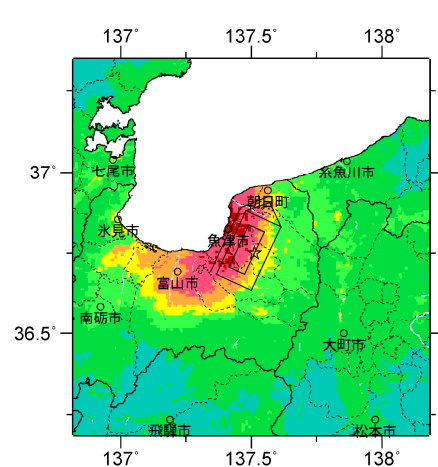
猿投-高浜断層帯



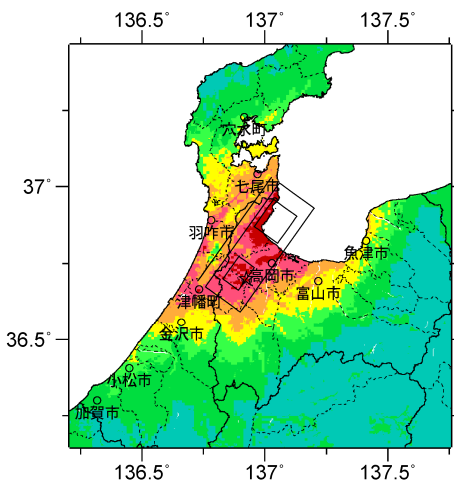
加木屋断層帯



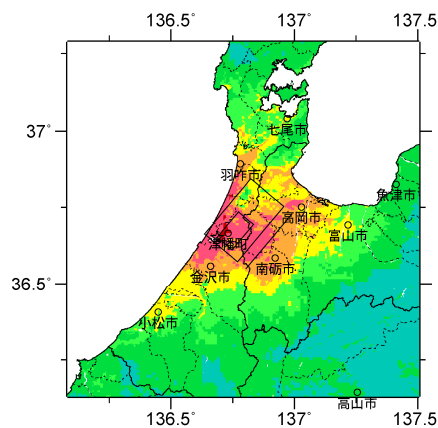
曽根丘陵断層帯



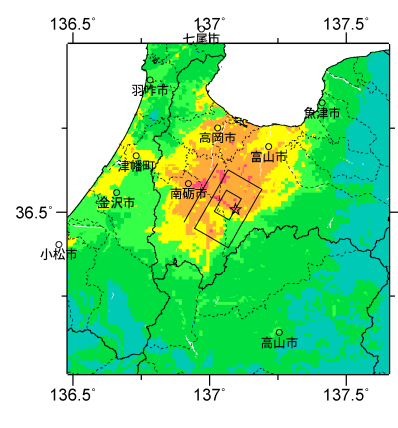
魚津断層帯



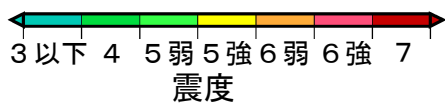
邑知潟断層帯



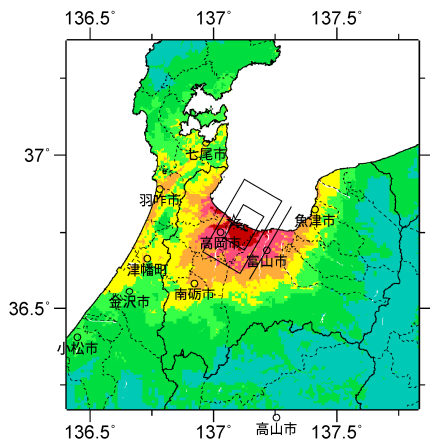
砺波平野断層帯西部



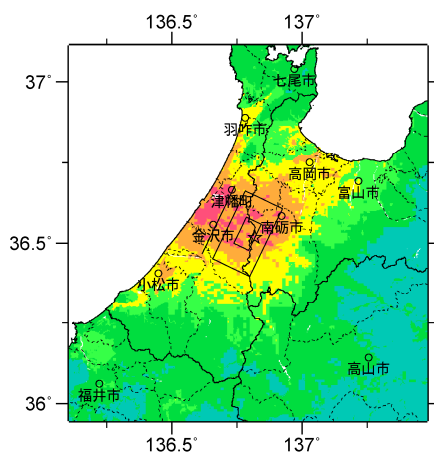
砺波平野断層帯東部



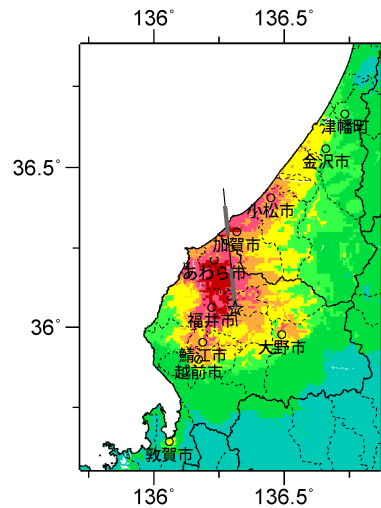
震源断層を特定した地震動予測地図  
各断層帯の代表ケース（ケース1）の震度



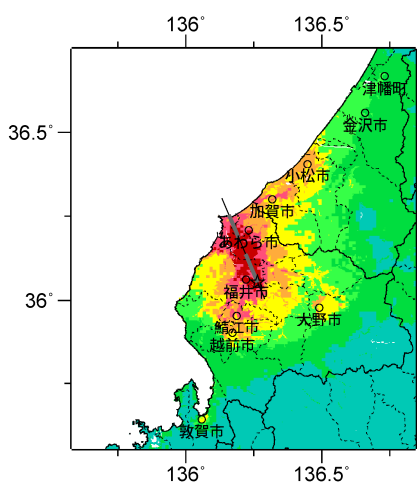
呉羽山断層帯



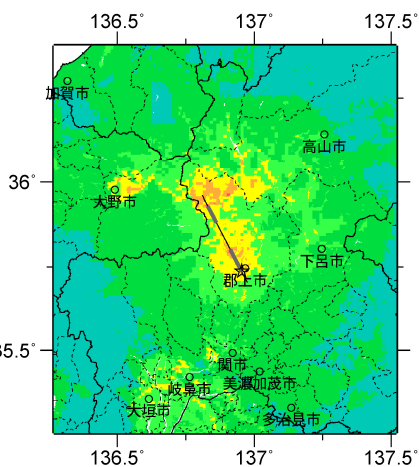
森本・富樫断層帯



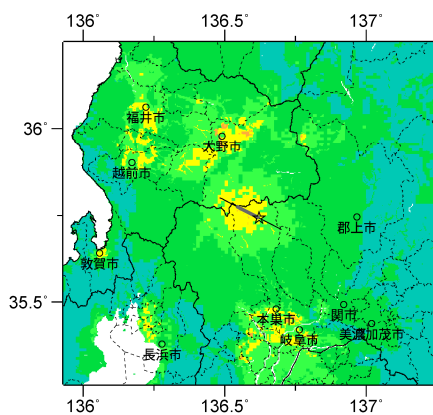
福井平野東縁断層帯主部



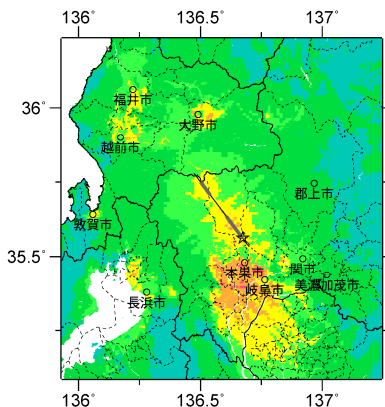
福井平野東縁断層帯西部



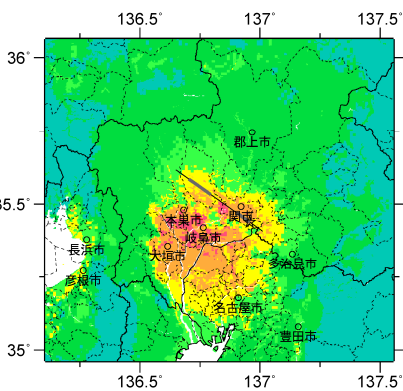
長良川上流断層帯



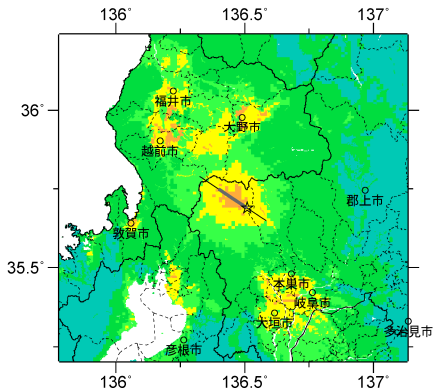
温見断層南東部



根尾谷断層帯



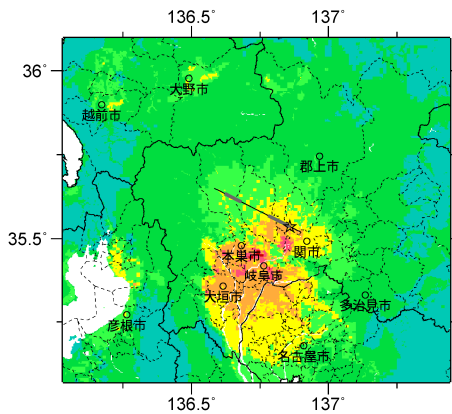
梅原断層帯



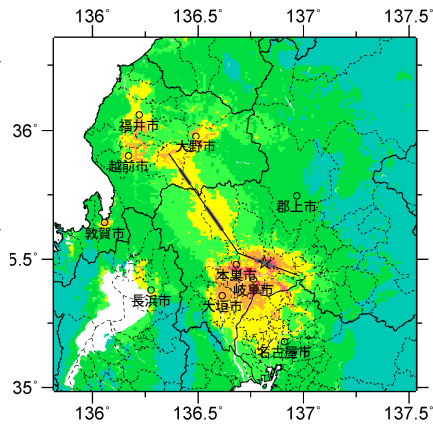
揖斐川断層帯



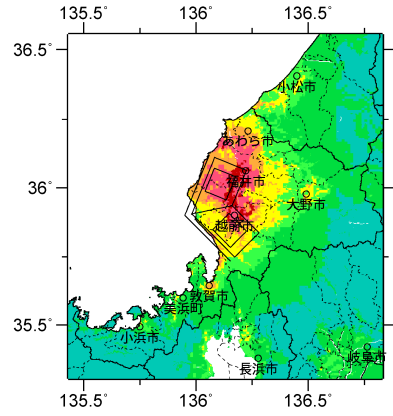
震源断層を特定した地震動予測地図  
各断層帯の代表ケース（ケース1）の震度



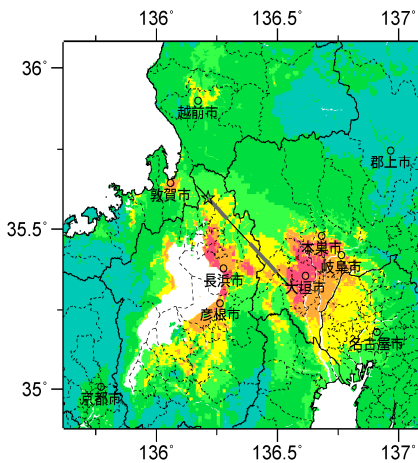
武儀川断層



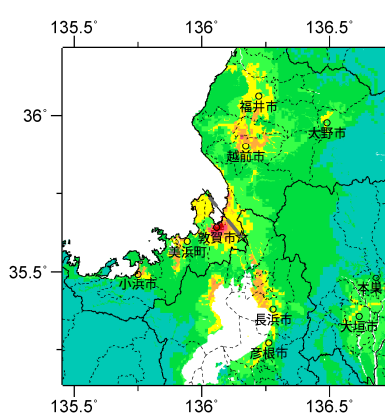
温見断層北西部・  
根尾谷・梅原断層帯  
(1891年濃尾地震モデル)



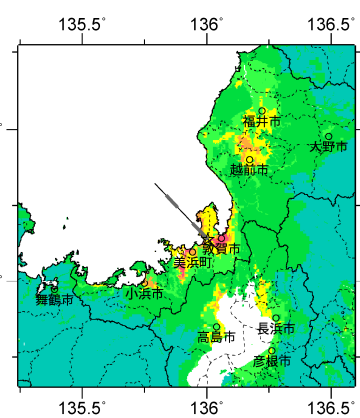
柳ヶ瀬・関ヶ原断層帯  
主部北部



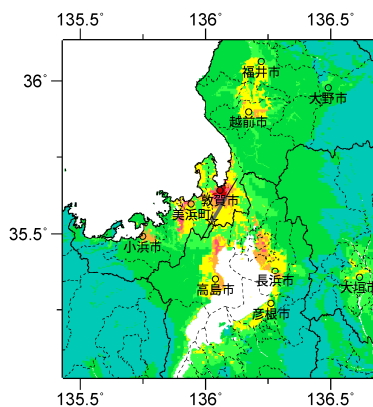
柳ヶ瀬・関ヶ原断層帯  
主部南部



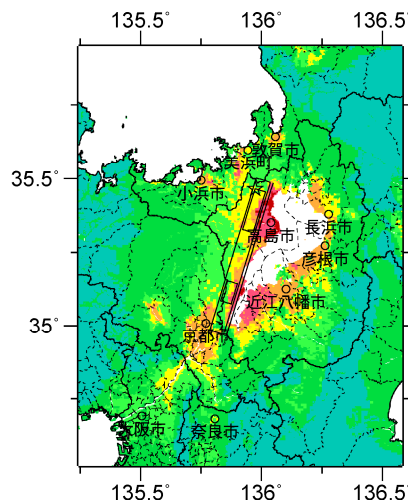
浦底一柳ヶ瀬山断層帯



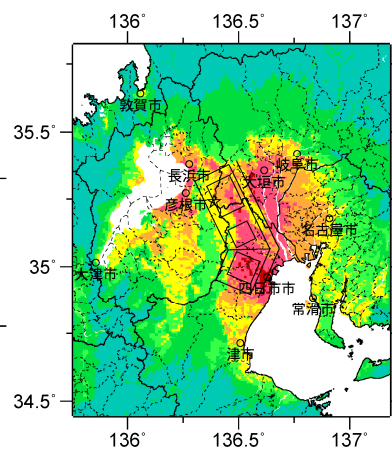
野坂断層帯



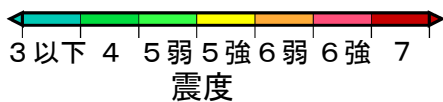
湖北山地断層帯北西部



琵琶湖西岸断層帯

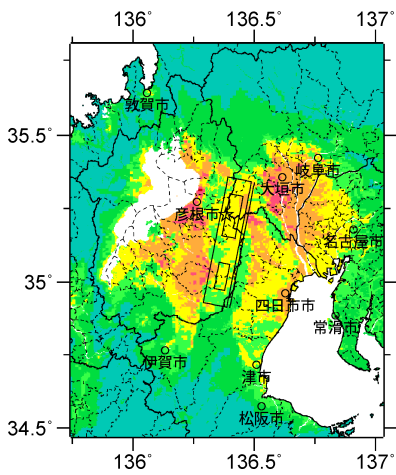


養老一桑名一四日市断層帯

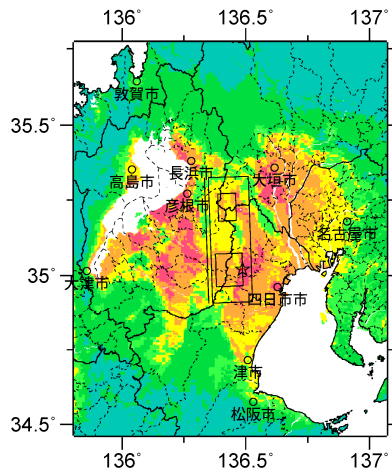


震源断層を特定した地震動予測地図  
各断層帯の代表ケース ( ケース 1 ) の震度

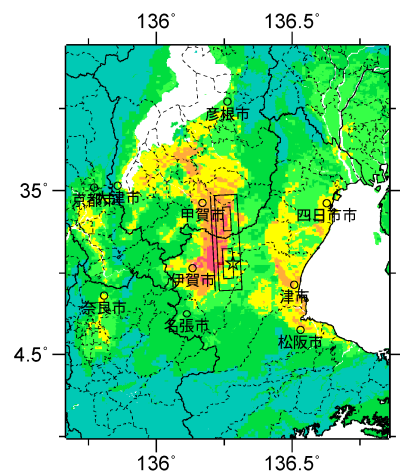




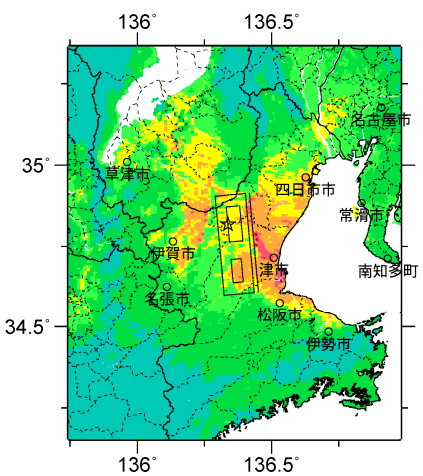
鈴鹿東縁断層帯



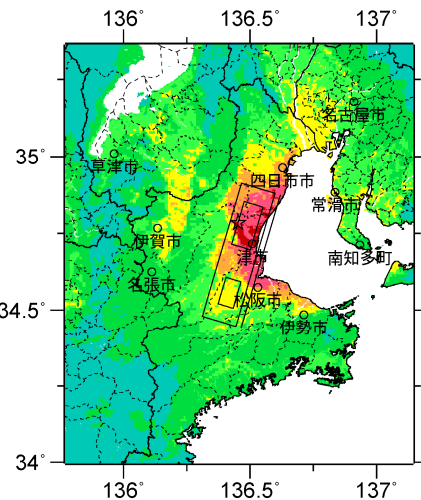
鈴鹿西縁断層帯



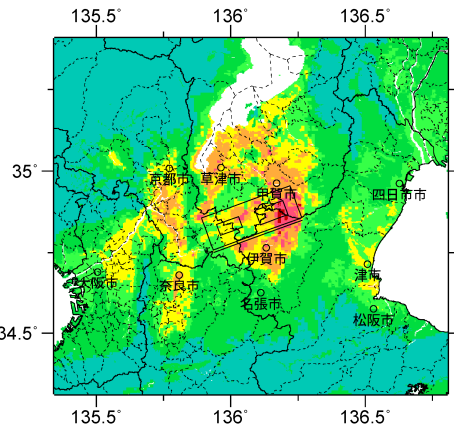
頓宮断層



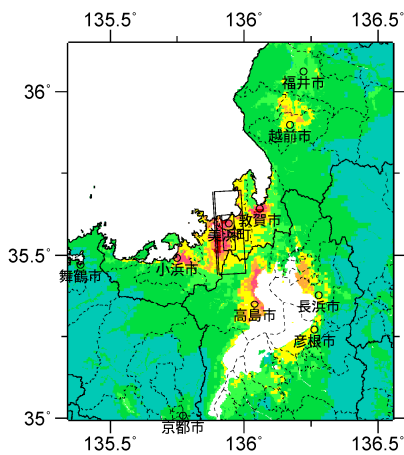
布引山地東縁断層帯西部



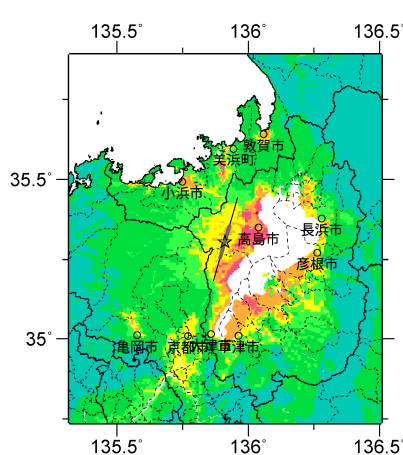
布引山地東縁断層帯東部



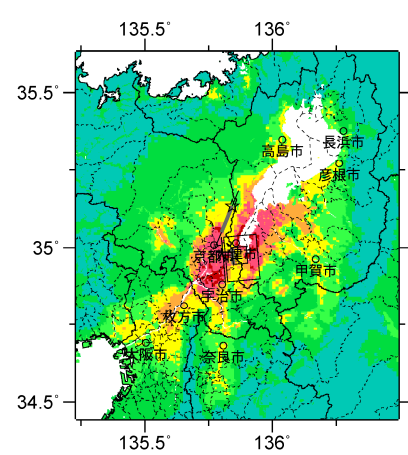
木津川断層帯



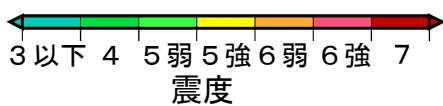
三方断層帯



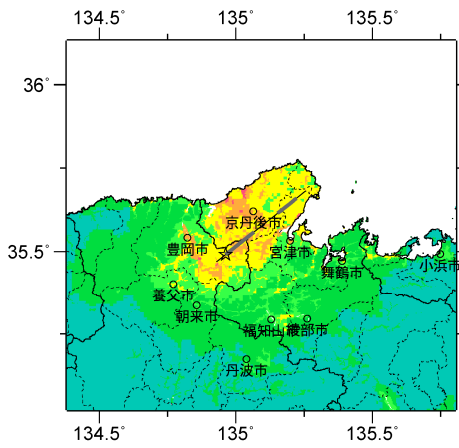
花折断層帯北部



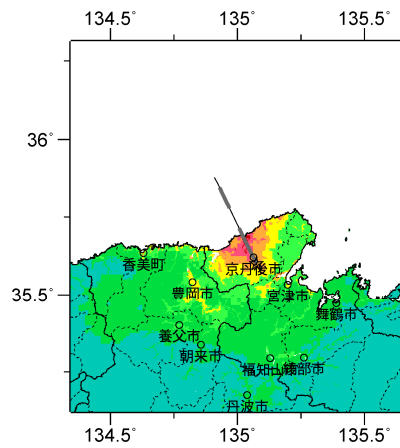
花折断層帯中南部



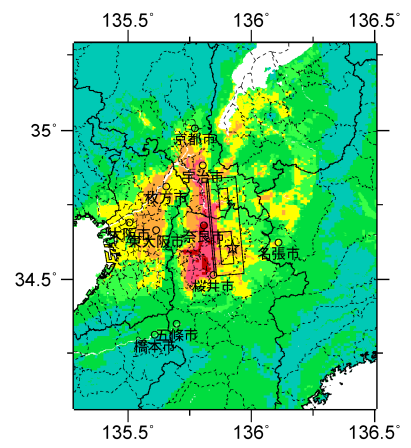
震源断層を特定した地震動予測地図  
各断層帯の代表ケース（ケース1）の震度



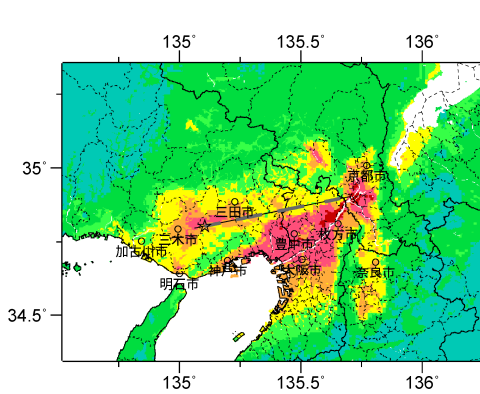
山田断層帯主部



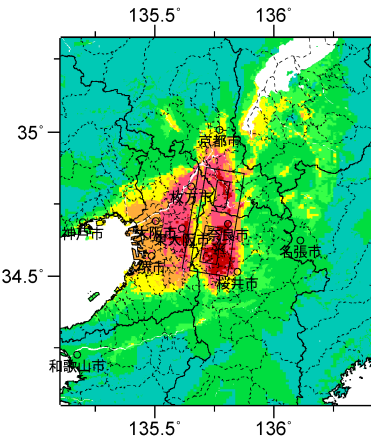
郷村断層帯



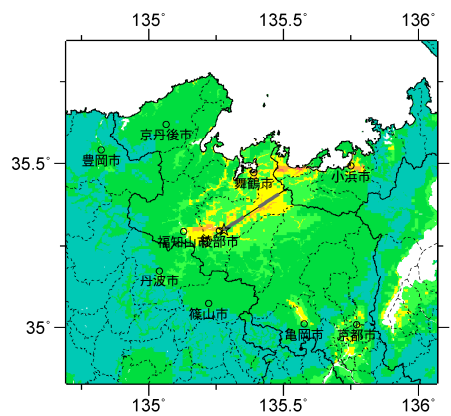
奈良盆地東縁断層帯



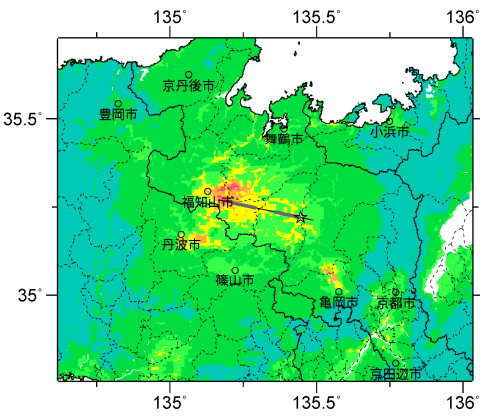
有馬-高槻断層帯



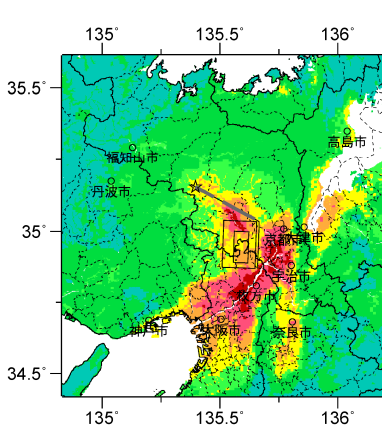
生駒断層帯



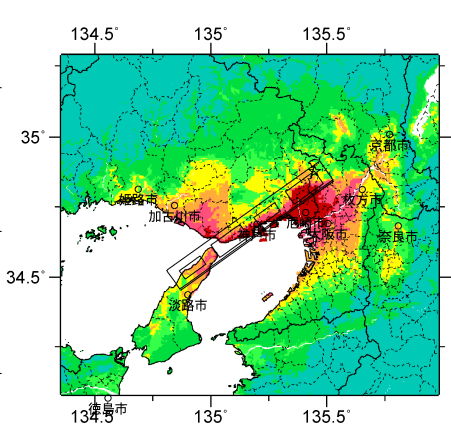
上林川断層



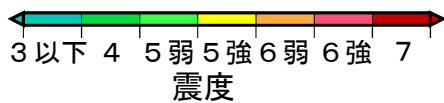
三峠断層



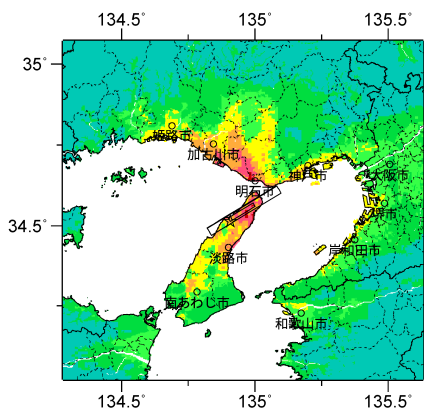
京都西山断層帯



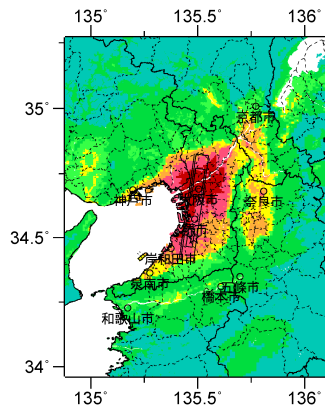
六甲・淡路島断層帯主部  
(六甲山地南縁-淡路島東岸区間)



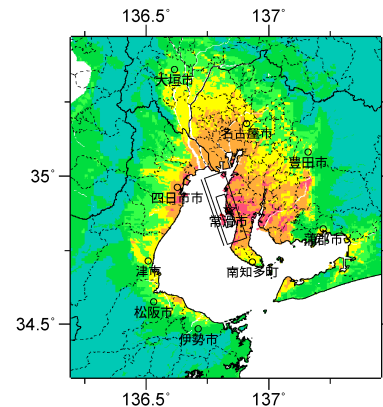
震源断層を特定した地震動予測地図  
各断層帯の代表ケース（ケース1）の震度



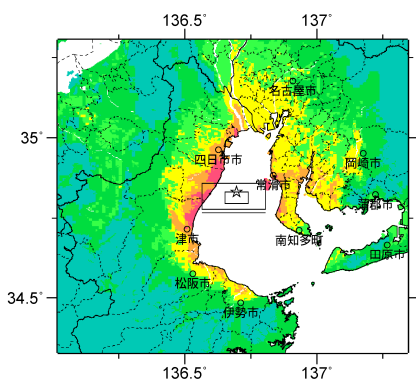
六甲・淡路島断層帯主部  
(淡路島西岸区間)



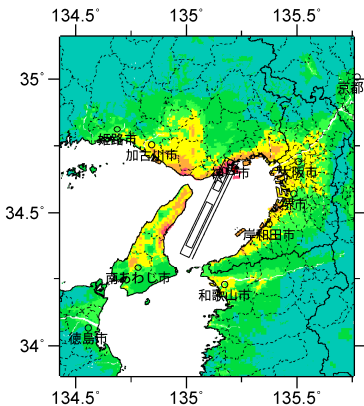
上町断層帯



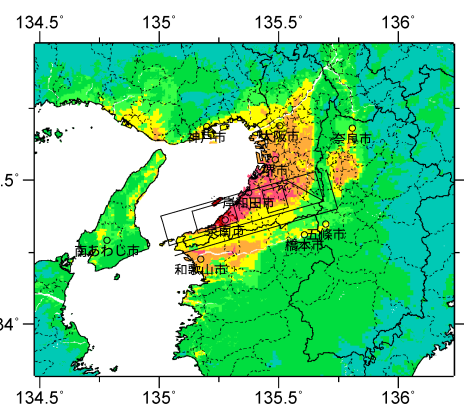
伊勢湾断層帯主部北部



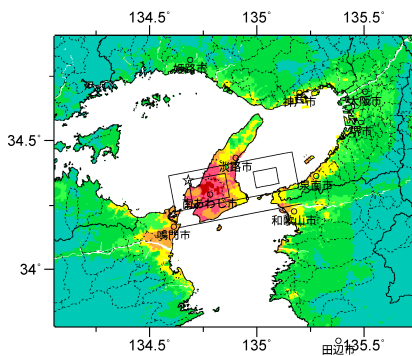
白子-野間断層



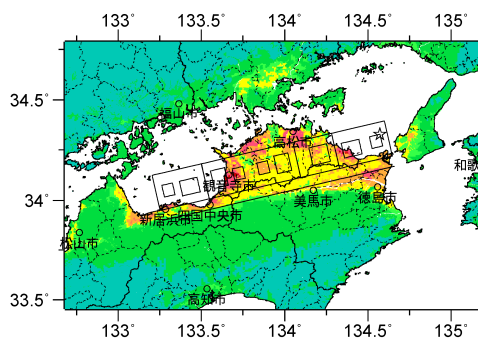
大阪湾断層帯



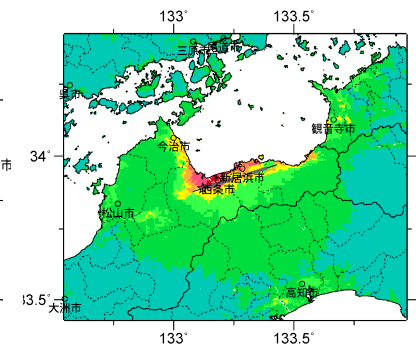
中央構造線断層帯  
(金剛山地東縁-和泉山脈南縁)



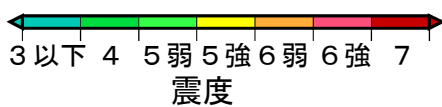
中央構造線断層帯  
(紀淡海峡-鳴門海峡)



中央構造線断層帯  
(讃岐山脈南縁-石鎚山脈北縁東部)

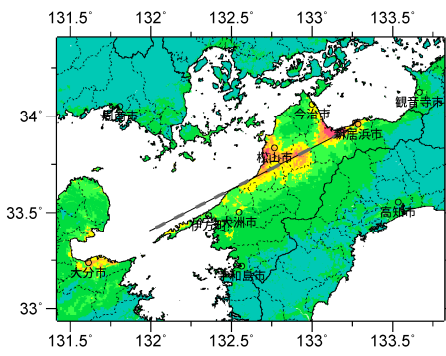


中央構造線断層帯  
(石鎚山脈北縁)

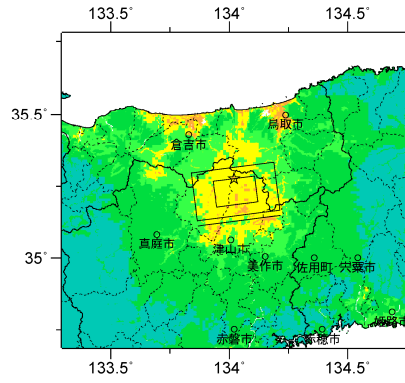


震源断層を特定した地震動予測地図  
各断層帯の代表ケース ( ケース 1 ) の震度

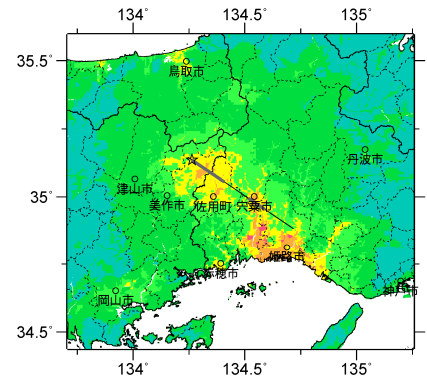




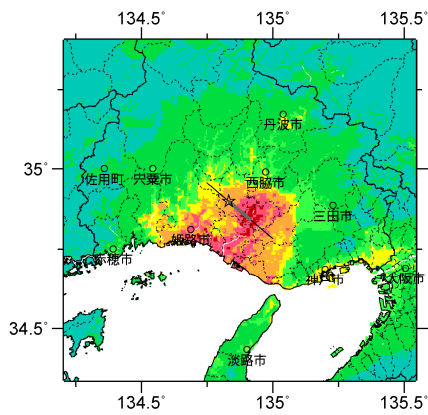
中央構造線断層帯  
(石鎚山脈北縁西部－伊予灘)



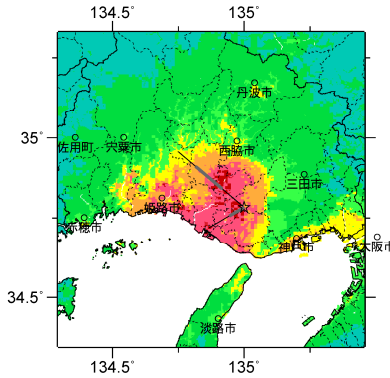
那岐山断層帯



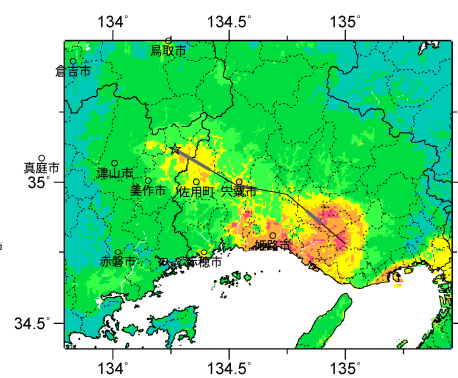
山崎断層帯主部北西部



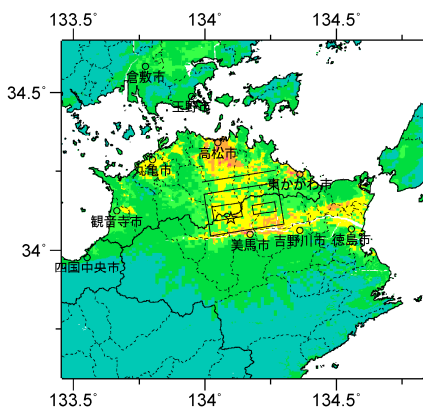
山崎断層帯主部南東部



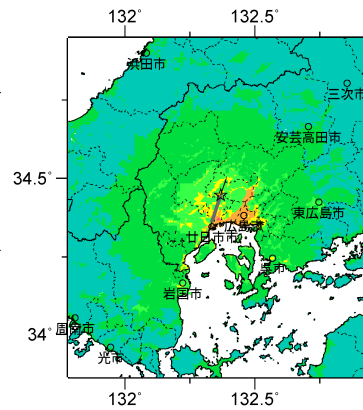
山崎断層帯  
(主部南東部・草谷断層)



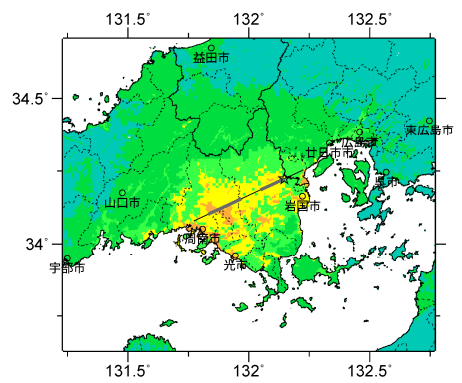
山崎断層帯  
(大原・土万・安富・主部南東部)



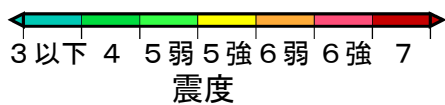
長尾断層帯



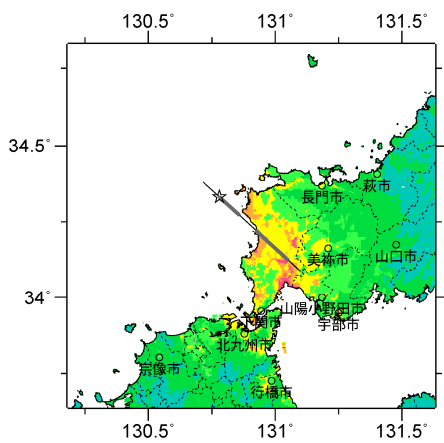
五日市断層



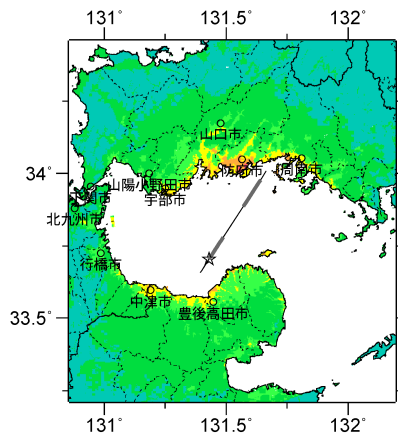
岩国断層帯



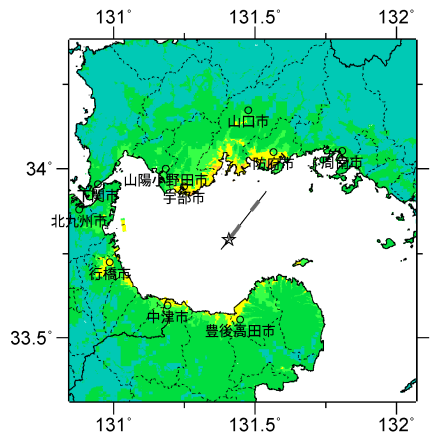
震源断層を特定した地震動予測地図  
各断層帯の代表ケース（ケース1）の震度



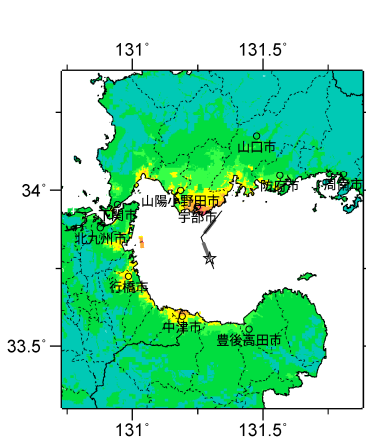
菊川断層帯



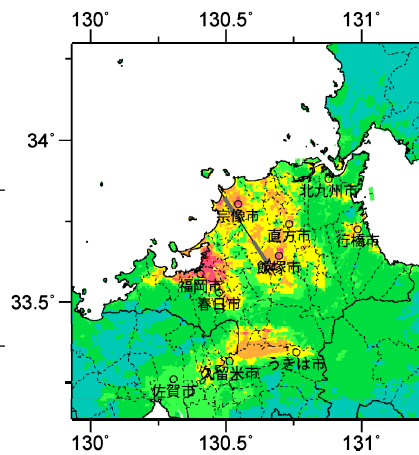
周防灘断層群主部



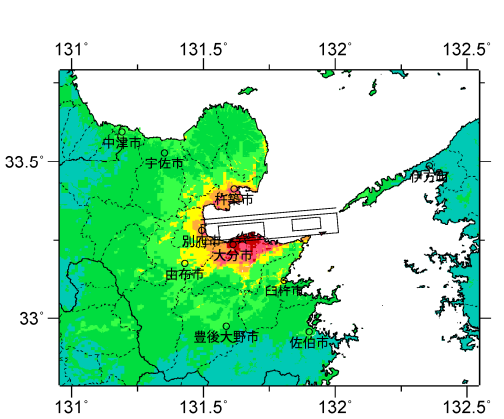
秋穂沖断層帯



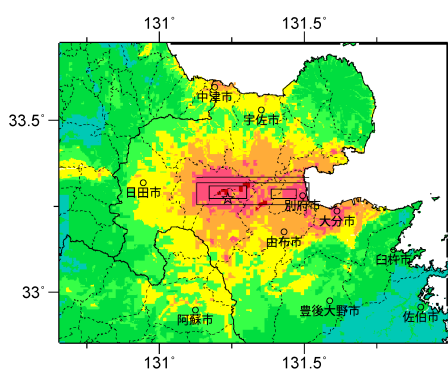
宇部南方沖断層帯



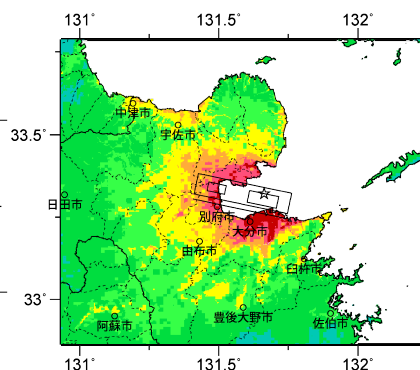
西山断層帯



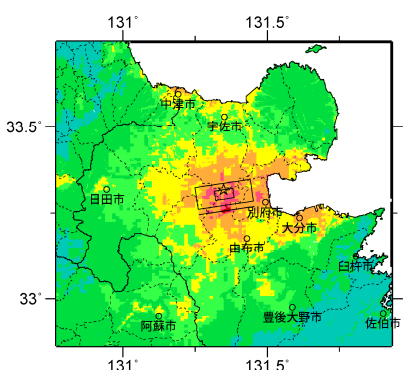
別府湾一日出生断層帯東部



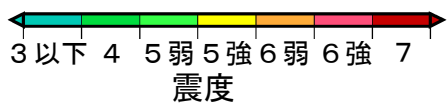
別府湾一日出生断層帯  
西部



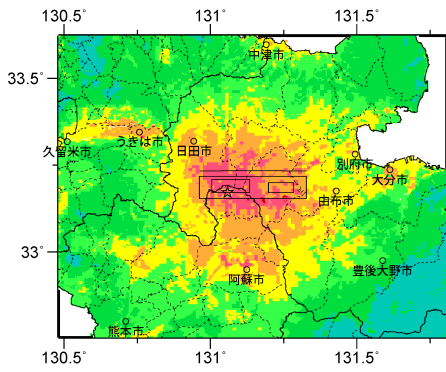
大分平野一日出生断層帯  
東部



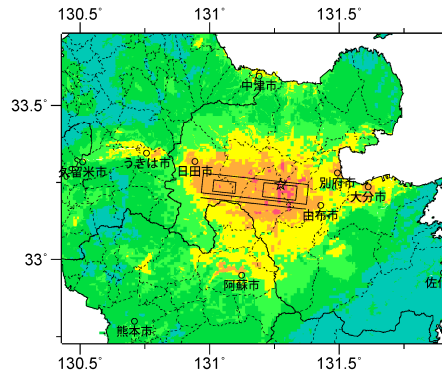
大分平野一日出生断層帯  
西部



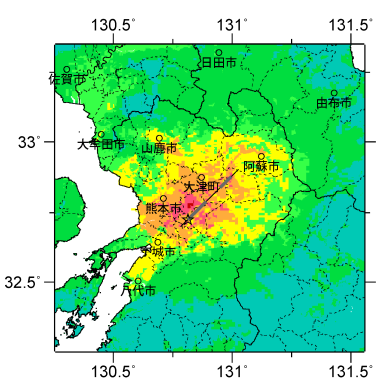
震源断層を特定した地震動予測地図  
各断層帯の代表ケース（ケース1）の震度



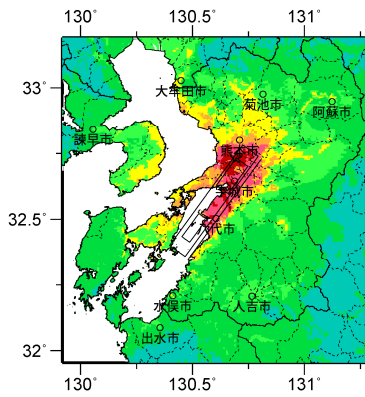
野稻岳-万年山断層帯



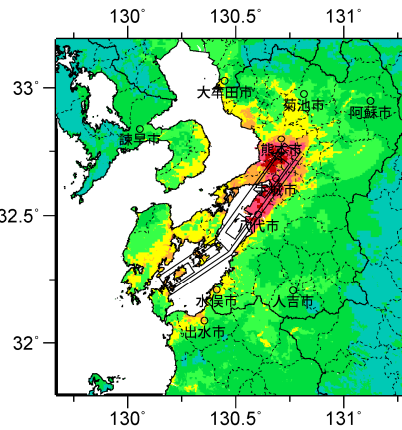
崩平山-亀石断層帯



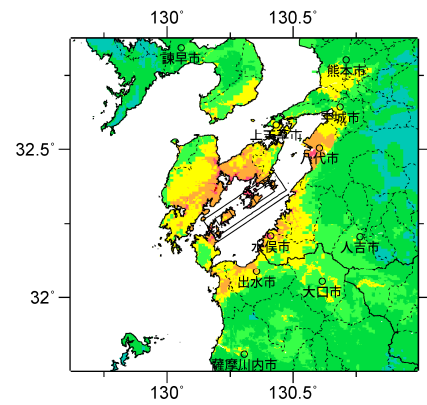
布田川・日奈久断層帯  
北東部



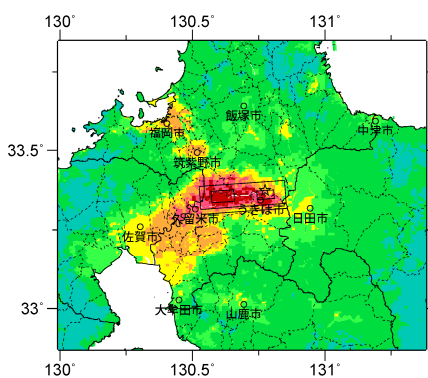
布田川・日奈久断層帯  
中部



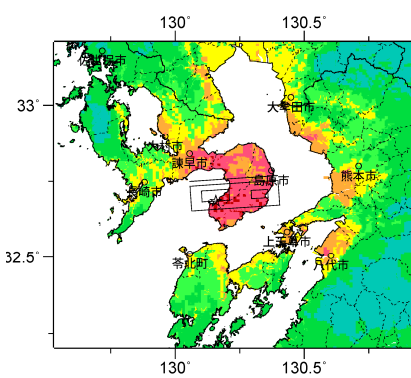
布田川・日奈久断層帯  
中部南西部



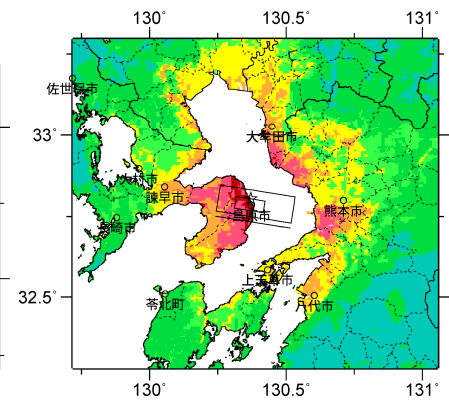
布田川・日奈久断層帯  
南西部



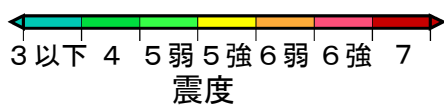
水縄断層帯



雲仙断層群北部

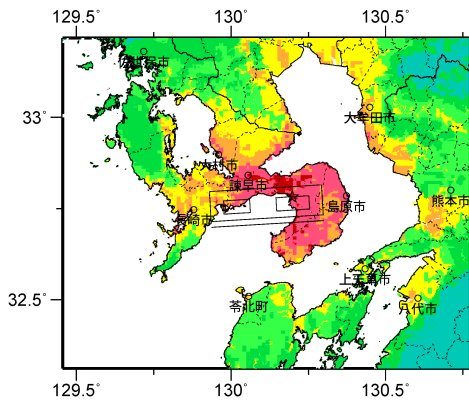


雲仙断層群南東部

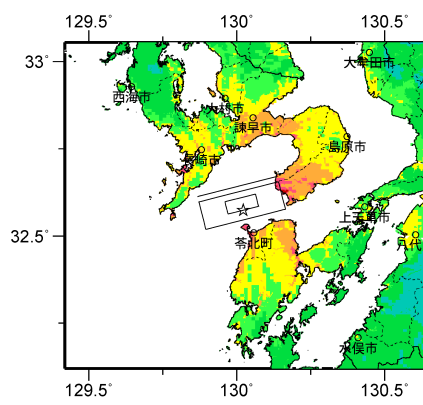


震源断層を特定した地震動予測地図  
各断層帯の代表ケース（ケース1）の震度

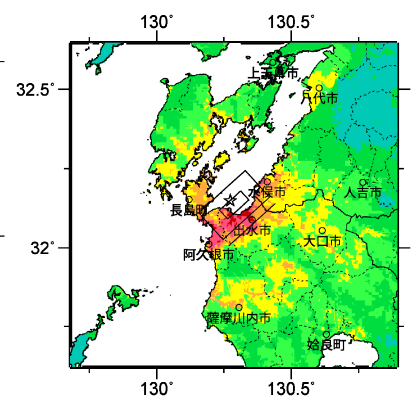




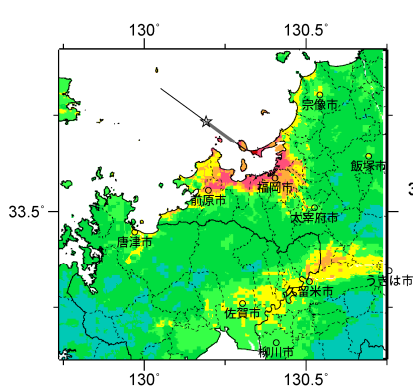
雲仙断層群南西部北部



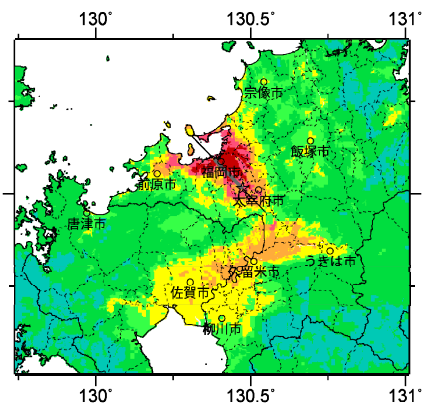
雲仙断層群南西部南部



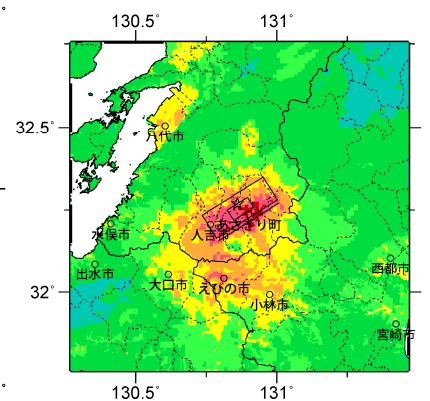
出水断層帯



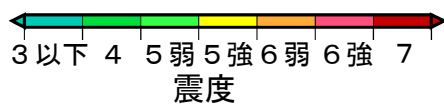
警固断層帯北西部



警固断層帯南東部



人吉盆地南縁断層



震源断層を特定した地震動予測地図  
各断層帯の代表ケース（ケース1）の震度